

Table 1

K285EU Minor Change to Licensed Facility September 28, 2010
Channel Study

Chan	Class	Call Letters	Type	Status	City	State	Country	Owner	Distance (km)	Bearing TO (deg)	Req. Dist. (km)	Clearance (km)
231	C2	KTFM	FM	LIC	FLORESVILLE	TX	US	BMP SAN ANTONIO LICENSE COMPAI	60.3	222.9	15.0	45.3
232	D	NEW	FX	APP	NEW BRAUNFELS	TX	US	FRANK G. MCCOY	9.6	322.7	0.0	9.6
282	D	NEW	FX	APP	SAN MARCOS	TX	US	COMMUNITY PUBLIC RADIO, INC.	37.5	26.7	8.1	29.4
282	D	NEW	FX	APP	SAN MARCOS	TX	US	LISA LOPEZ	38.3	22.0	9.8	28.5
283	C1	KZEP-FM	FM	LIC	SAN ANTONIO	TX	US	CITICASTERS LICENSES, INC.	42.2	244.5	64.6	-22.5 (see Note and Figure 2)
285	D	K285EU	FX	CP	MENDOZA	TX	US	HOUSTON CHRISTIAN BROADCASTER	12.1	44.2	29.8	-17.7 (same as applicant)
285	D	K285EU	FX	LIC	MENDOZA	TX	US	HOUSTON CHRISTIAN BROADCASTER	22.7	45.3	29.7	-7.0 (same as applicant)
285	D	NEW	FX	APP	KARNES CITY	TX	US	EDGEWATER BROADCASTING, INC.	65.4	172.7	43.0	22.4
285	A	KTXX-FM	FM	LIC	BEE CAVE	TX	US	BMP AUSTIN LICENSE COMPANY, L.P	76.4	13.8	49.5	26.8
287	C	KSMG	FM	LIC	SEGUIN	TX	US	COX RADIO, INC.	38.1	206.3	83.7	-45.6 (see Note and Figure 2)

(with respect to KZEP-FM) 2nd adjacent KZEP-FM (LIC) has a field strength of 70.3 dBu F(50,50) at the K284AH site. Therefore K284AH's interfering contour is the 110.3 dBu F(50,10) contour. K284AH's 110.3 dBu F(50,10) contour extends a horizontal distance of 339 meters from the antenna. The interfering contour does not contain any structures or population (See Figure 2). Therefore this proposal is compliant with the allowance of Rule 74.1204(d).

(with respect to KSMG) 2nd adjacent KSMG (LIC) has a field strength of 79.7 dBu F(50,50) at the K284AH site. Therefore any potential interference received from K284AH will be less than that shown for KZEP-FM (above) which represents the "worst case." The interfering contour does not contain any structures or population (See Figure 2). Therefore this proposal is compliant with the allowance of Rule 74.1204(d).

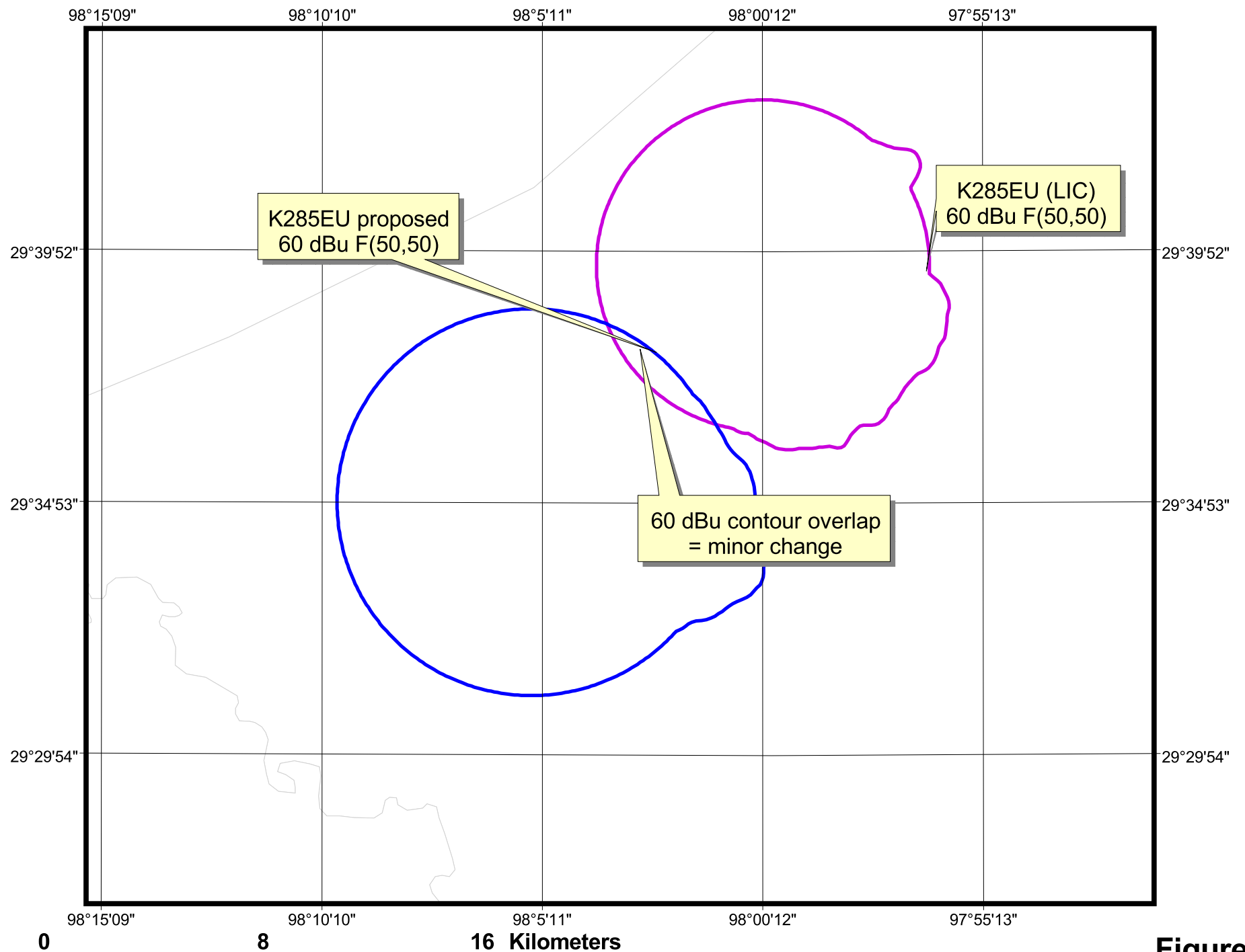


Figure 1

K285EU, MENDOZA, TX : MINOR CHANGE TO LICENSED FACILITY
Minor change showing



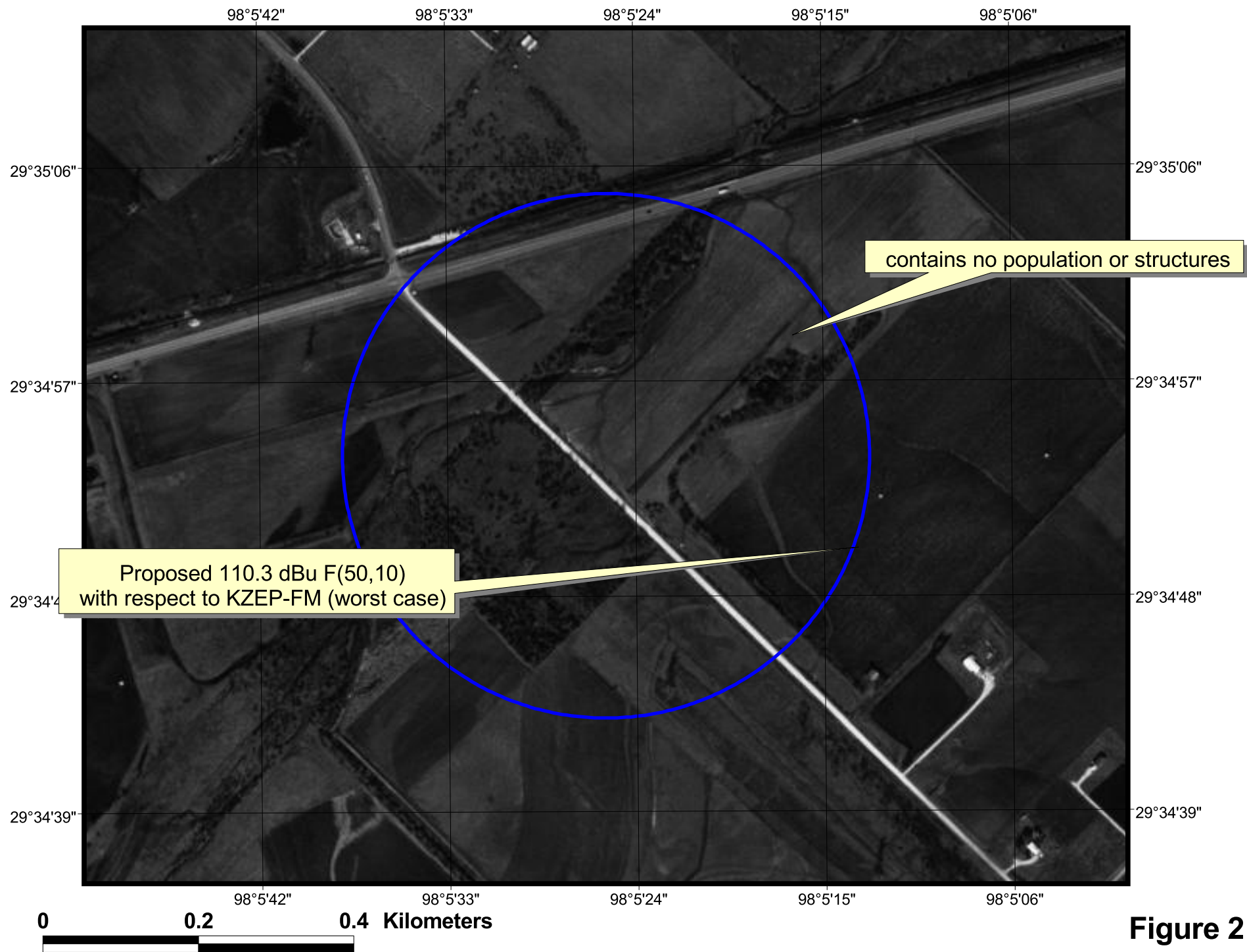


Figure 2

K285EU, MENDOZA, TX : MINOR CHANGE TO LICENSED FACILITY
Potential interference area with respect to KSMG and KZEP



Radiofrequency Electromagnetic Exposure Analysis

Source	Height AGL(m)	Antenna type	Bays	Horizontal ERP (kw)	Vertical ERP (kw)	Power Density $\mu\text{W}/\text{cm}^2$ at 2 meters AGL			
						Maximum power density	% controlled environment limit (1000 $\mu\text{W}/\text{cm}^2$)	% uncontrolled environment limit (200 $\mu\text{W}/\text{cm}^2$)	Distance to maximum PD (m)
PROPOSED	10	ERI LPX-2 E	2	0.250	0.250	38.0	3.8%	19.0%	5.4
						38.0	3.8%	19.0%	5.4

The proposed facility is excluded from environmental processing under 47. C.F.R. Section 1.1306 (i.e., The facility will not have a significant environmental impact and complies with the maximum permissible radiofrequency electromagnetic exposure limits for controlled and uncontrolled environments).

Determined using FCC FM Model 2.10