

EXHIBIT 16
§73.509 CONTOUR PROTECTION

This exhibit addresses the contour protection requirements of §73.509. No prohibited overlap exists between the contours of the proposed facilities and those of existing reserved band NCE assignments or applications.

Relevant contour plots were generated by computer using the methods specified in §73.313. Antenna height above average terrain was computed using the standard eight-radial method specified in §73.313(d). Average terrain along additional azimuths was computed and used in conjunction with the F(50,50) and F(50,10) curves to determine distances to protected and interfering contours respectively. These additional azimuths were not included in the computation of the antenna eight-radial height above average terrain. Elevation data used in the computation of average terrain was determined by linear interpolation of the NGDC 30-arcsecond topographic database consistent with §73.312. The contours and transmitter locations were plotted on maps generated by the United States Census Bureau TIGER Map Service.

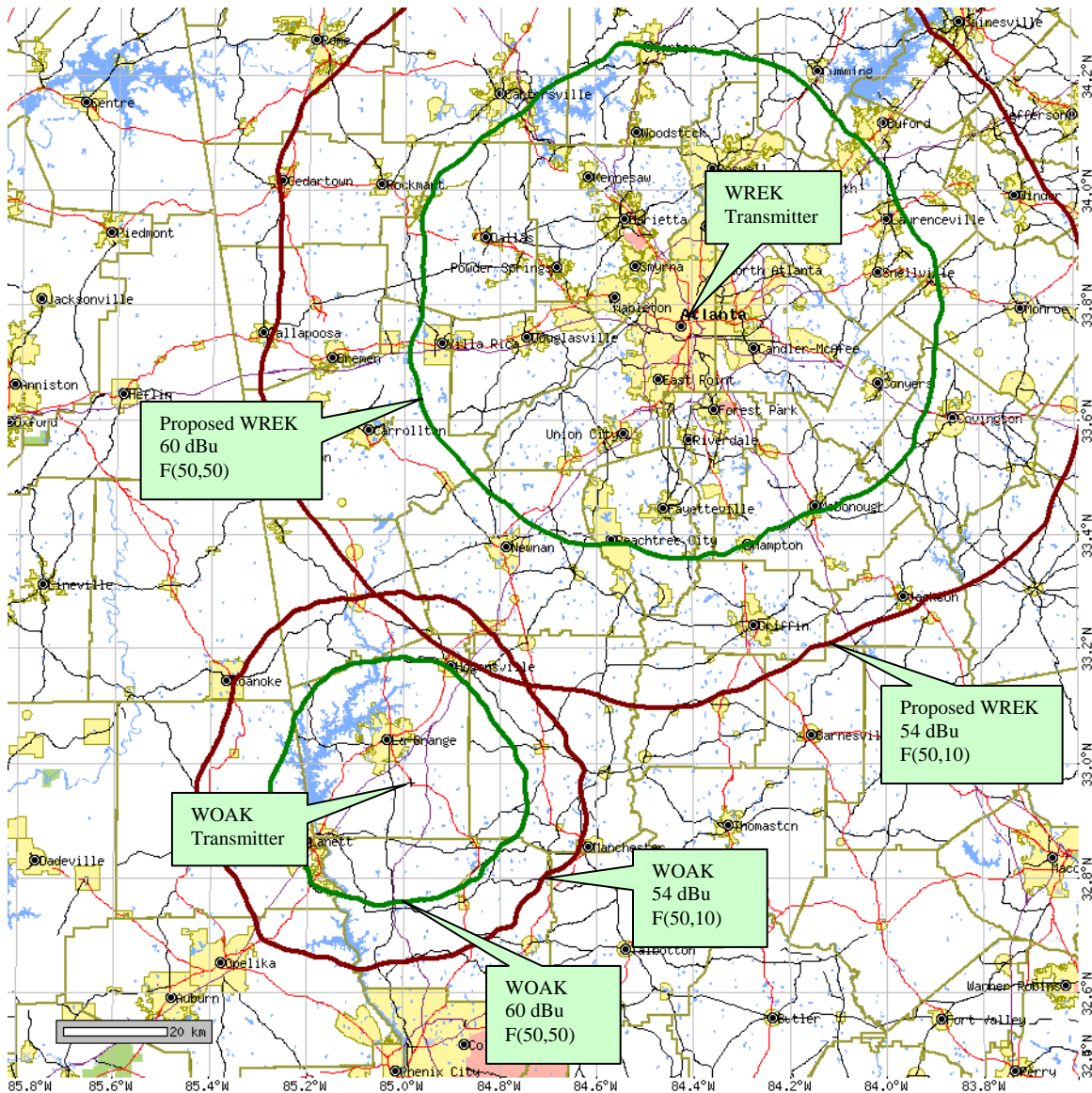


Figure 1. Predicted \$73.509 contour protection in relation to WOAK (BLED-19840620CY), channel 215A, LA GRANGE, GA.

WOAK (BLED-19840620CY) Details

Record Type.....	License
Community of License.....	LA GRANGE, GA
Latitude (NAD27).....	32-57-57 N
Longitude (NAD27).....	84-59-08 W
Channel.....	215A
Effective Radiated Power.....	3.4 kW
Antenna Height above Average Terrain.....	91 m

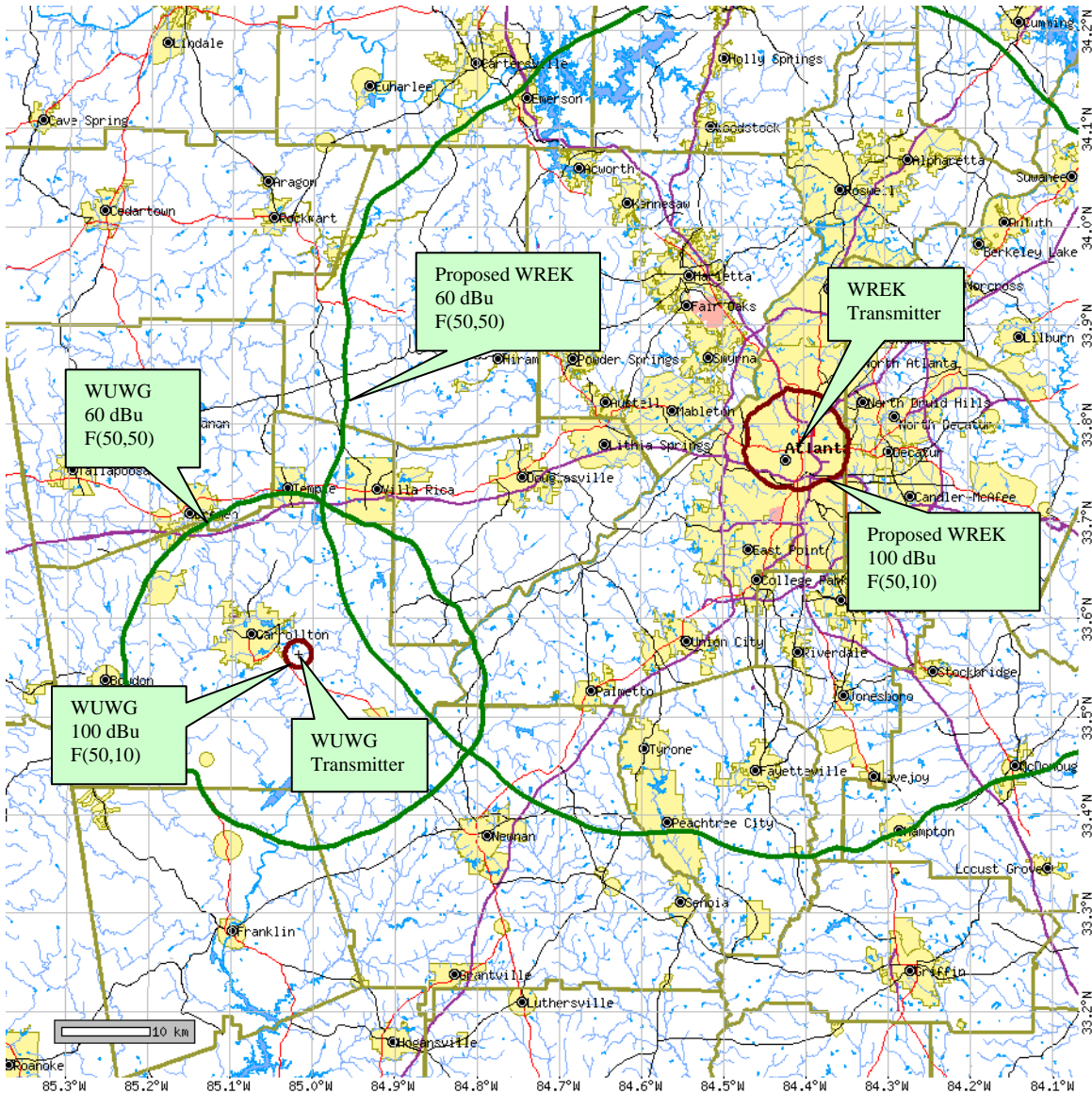


Figure 2. Predicted \$73.509 contour protection in relation to WUWG (BLED-19850402LP), channel 214A, CARROLLTON, GA.

WUWG (BLED-19850402LP) Details

Record Type.....	License
Community of License.....	CARROLLTON, GA
Latitude (NAD27).....	33-33-50 N
Longitude (NAD27).....	85-01-04 W
Channel.....	214A
Effective Radiated Power.....	0.5 kW
Antenna Height above Average Terrain.....	151 m

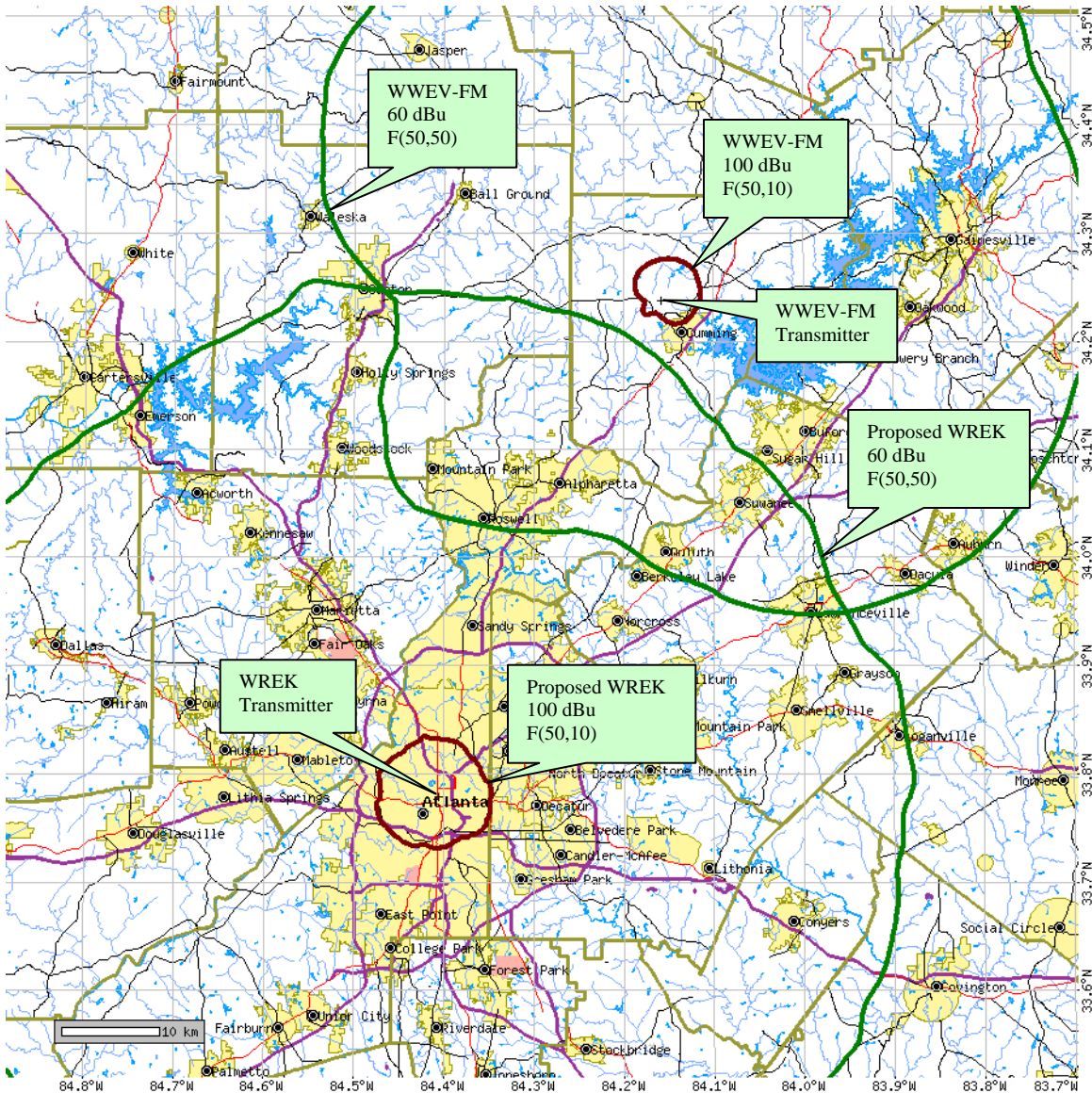


Figure 3. Predicted \$73.509 contour protection in relation to WVEV-FM (BLED-19860203KB), channel 218C2, CUMMING, GA.

WVEV-FM (BLED-19860203KB) Details

Record Type.....	License
Community of License.....	CUMMING, GA
Latitude (NAD27).....	34-14-13 N
Longitude (NAD27).....	84-09-36 W
Channel.....	218C2
Effective Radiated Power.....	8.9 kW
Antenna Height above Average Terrain.....	293 m

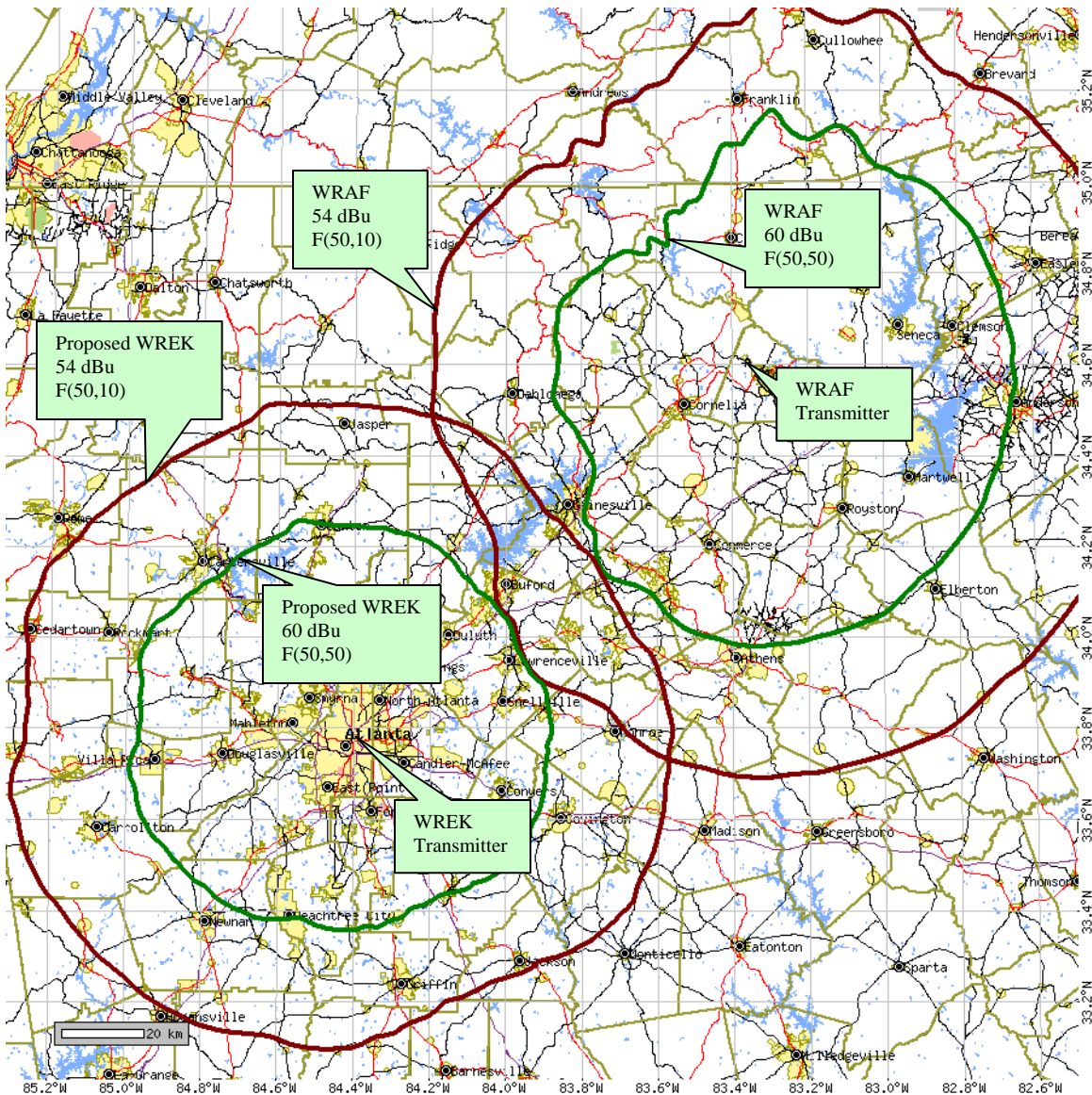


Figure 4. Predicted \$73,509 contour protection in relation to WRAF (BLED-19860211KD), channel 215C1, TOCCOA FALLS, GA.

WRAF (BLED-19860211KD) Details

Record Type.....	License
Community of License.....	TOCCOA FALLS, GA
Latitude (NAD27).....	34-35-57 N
Longitude (NAD27).....	83-21-55 W
Channel.....	215C1
Effective Radiated Power.....	100 kW
Antenna Height above Average Terrain.....	172 m

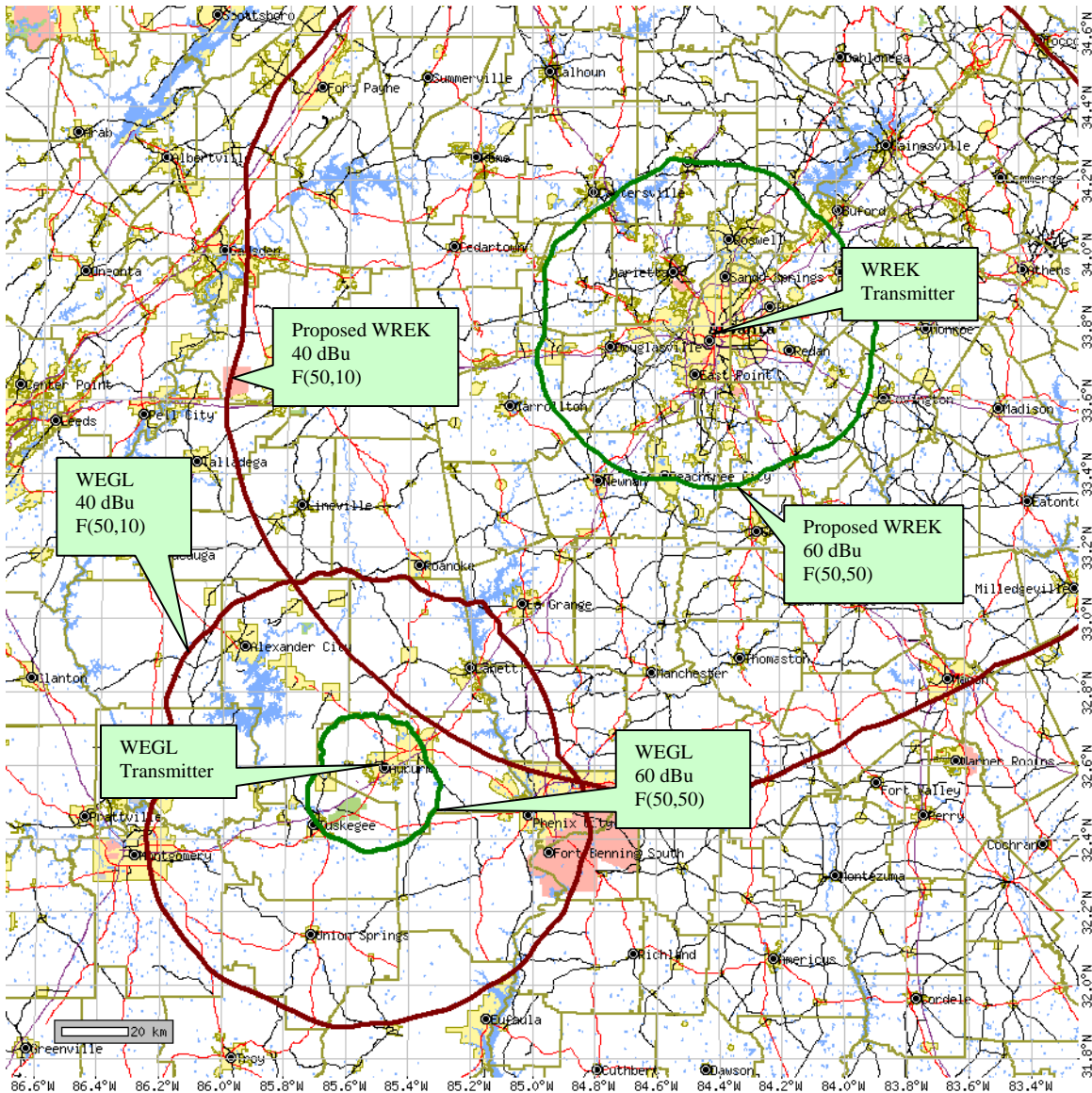


Figure 5. Predicted \$73.509 contour protection in relation to WEGL (BLED-19881215KD), channel 216A, AUBURN, AL.

WEGL (BLED-19881215KD) Details

Record Type.....	License
Community of License.....	AUBURN, AL
Latitude (NAD27).....	32-36-11 N
Longitude (NAD27).....	85-29-12 W
Channel.....	216A
Effective Radiated Power.....	3 kW
Antenna Height above Average Terrain.....	65 m

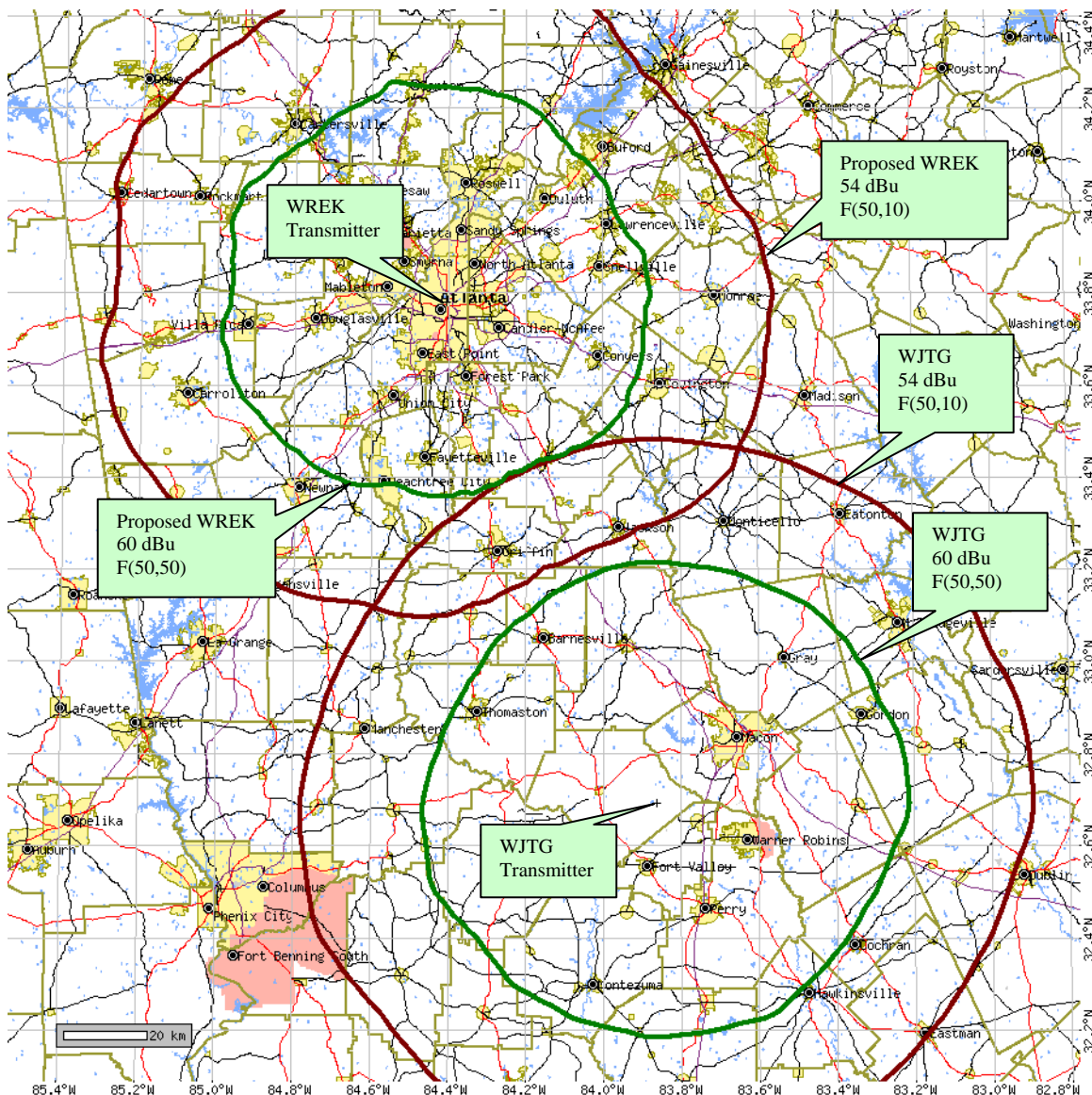


Figure 6. Predicted 73.509 contour protection in relation to WJTG (BLED-19890228KA), channel 217C1, FORT VALLEY, GA.

WJTG (BLED-19890228KA) Details

Record Type.....License
 Community of License.....FORT VALLEY, GA
 Latitude (NAD27).....32-41-27 N
 Longitude (NAD27).....83-51-45 W
 Channel.....217C1
 Effective Radiated Power.....100 kW
 Antenna Height above Average Terrain.....140 m

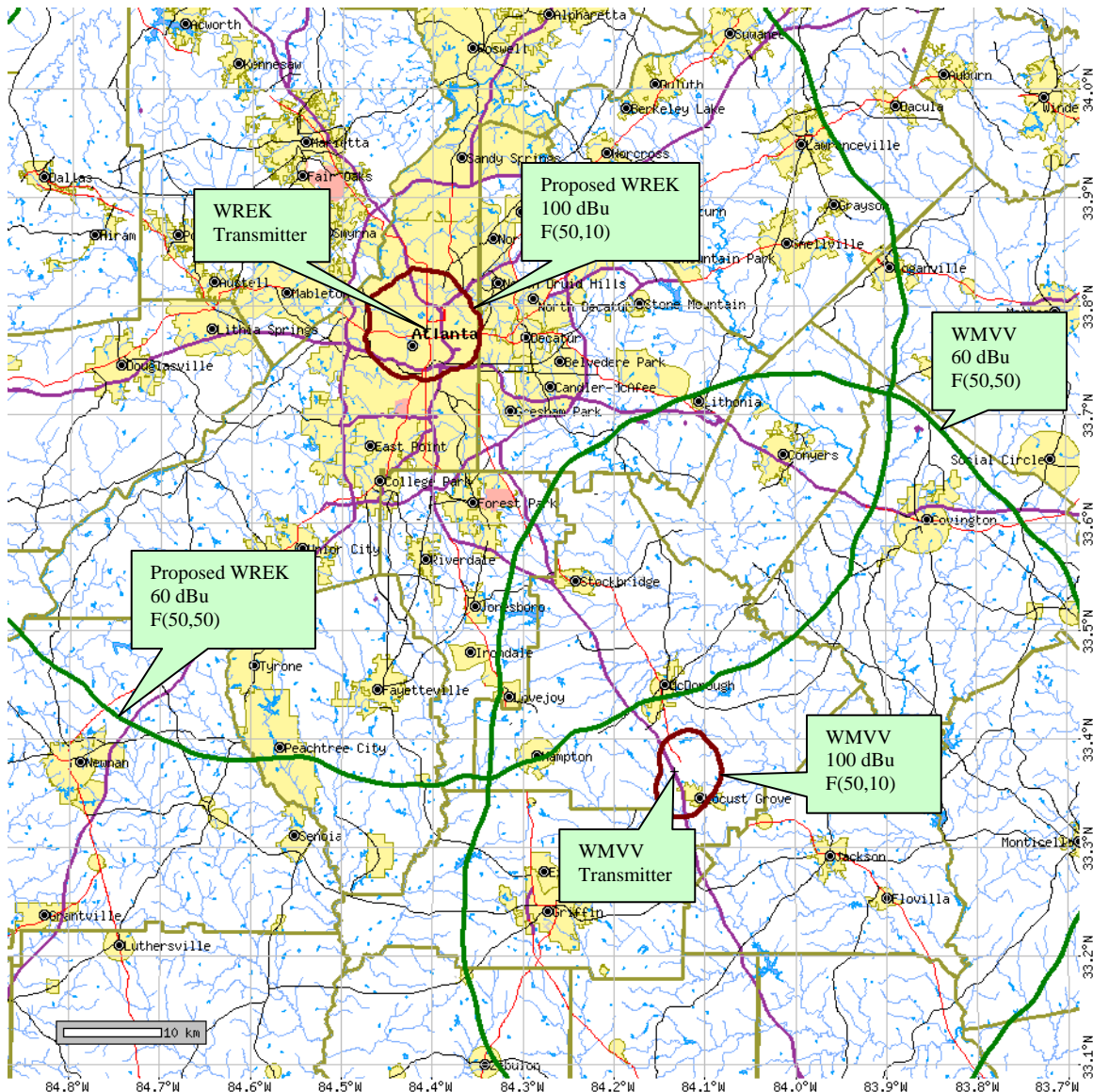


Figure 7. Predicted §73.509 contour protection in relation to WMVV (BLED-20030321ABI), channel 214C2, GRIFFIN, GA.

WMVV (BLED-20030321ABI) Details

Record Type.....License
 Community of License.....GRIFFIN, GA
 Latitude (NAD27).....33-22-12 N
 Longitude (NAD27).....84-07-60 W
 Channel.....214C2
 Effective Radiated Power.....18 kW
 Antenna Height above Average Terrain.....144 m

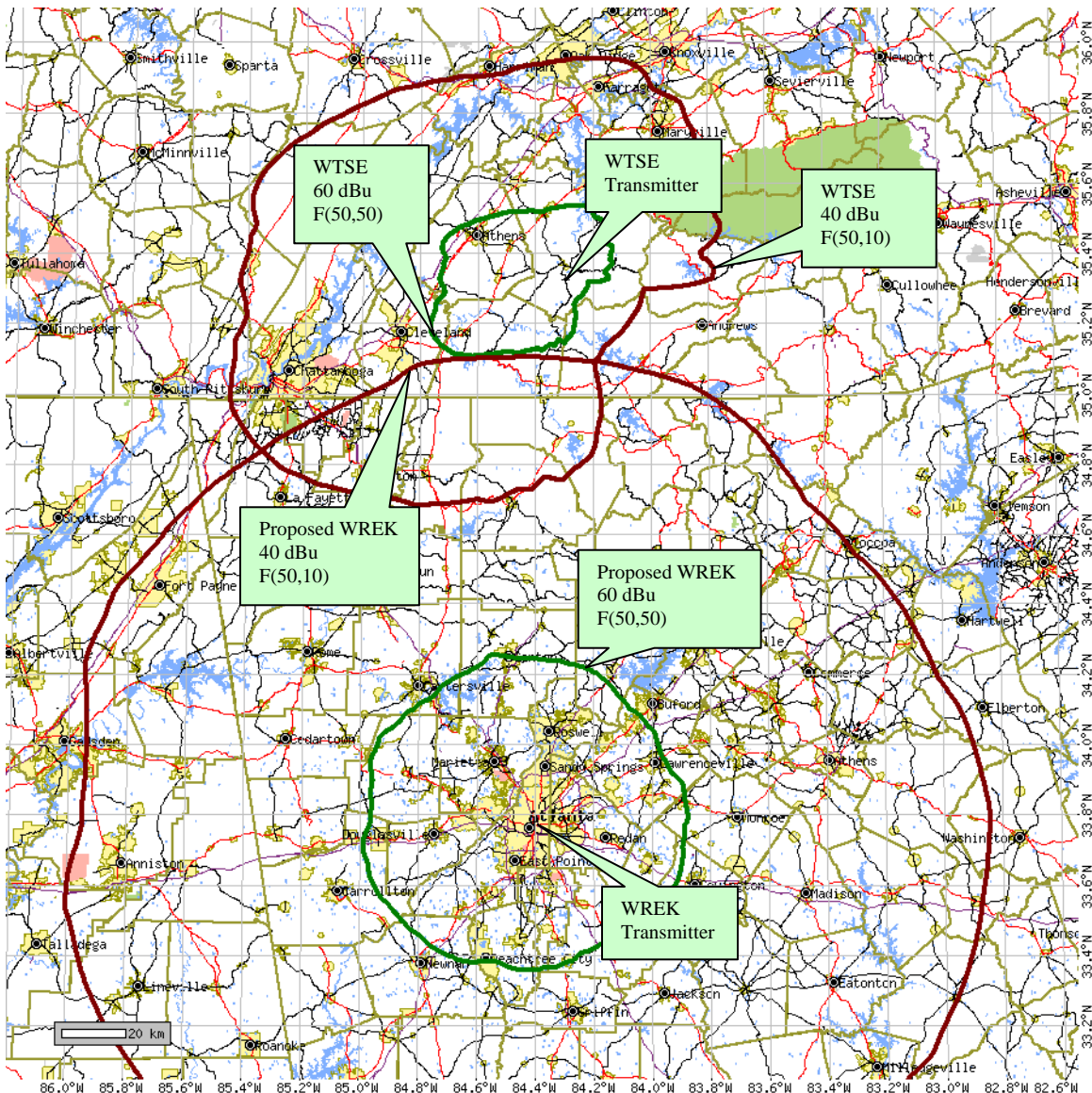


Figure 8. Predicted 73.509 contour protection in relation to WTSE (BLED-20040902ABD), channel 216C3, BENTON, TN.

WTSE (BLED-20040902ABD) Details

Record Type.....	License
Community of License.....	BENTON, TN
Latitude (NAD27).....	35-19-25 N
Longitude (NAD27).....	84-17-54 W
Channel.....	216C3
Effective Radiated Power.....	8.5 kW
Antenna Height above Average Terrain.....	142 m

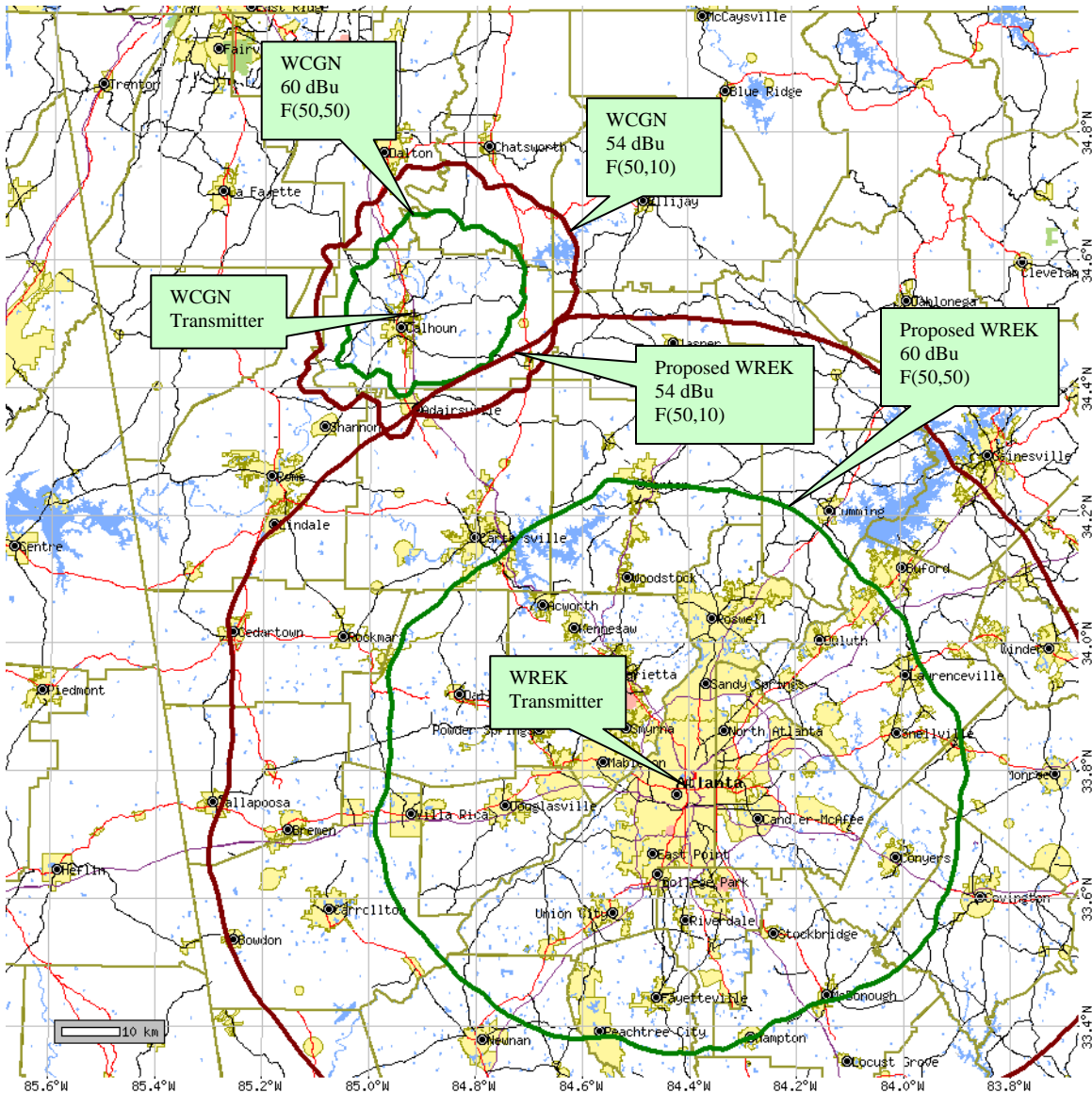


Figure 9. Predicted §73.509 contour protection in relation to WCGN (BMPED-20070907ACE), channel 217A, CALHOUN, GA.

WCGN (BMPED-20070907ACE) Details

Record Type.....	Application
Community of License.....	CALHOUN, GA
Latitude (NAD27).....	34-30-55 N
Longitude (NAD27).....	84-55-03 W
Channel.....	217A
Effective Radiated Power.....	6 kW
Antenna Height above Average Terrain.....	36 m

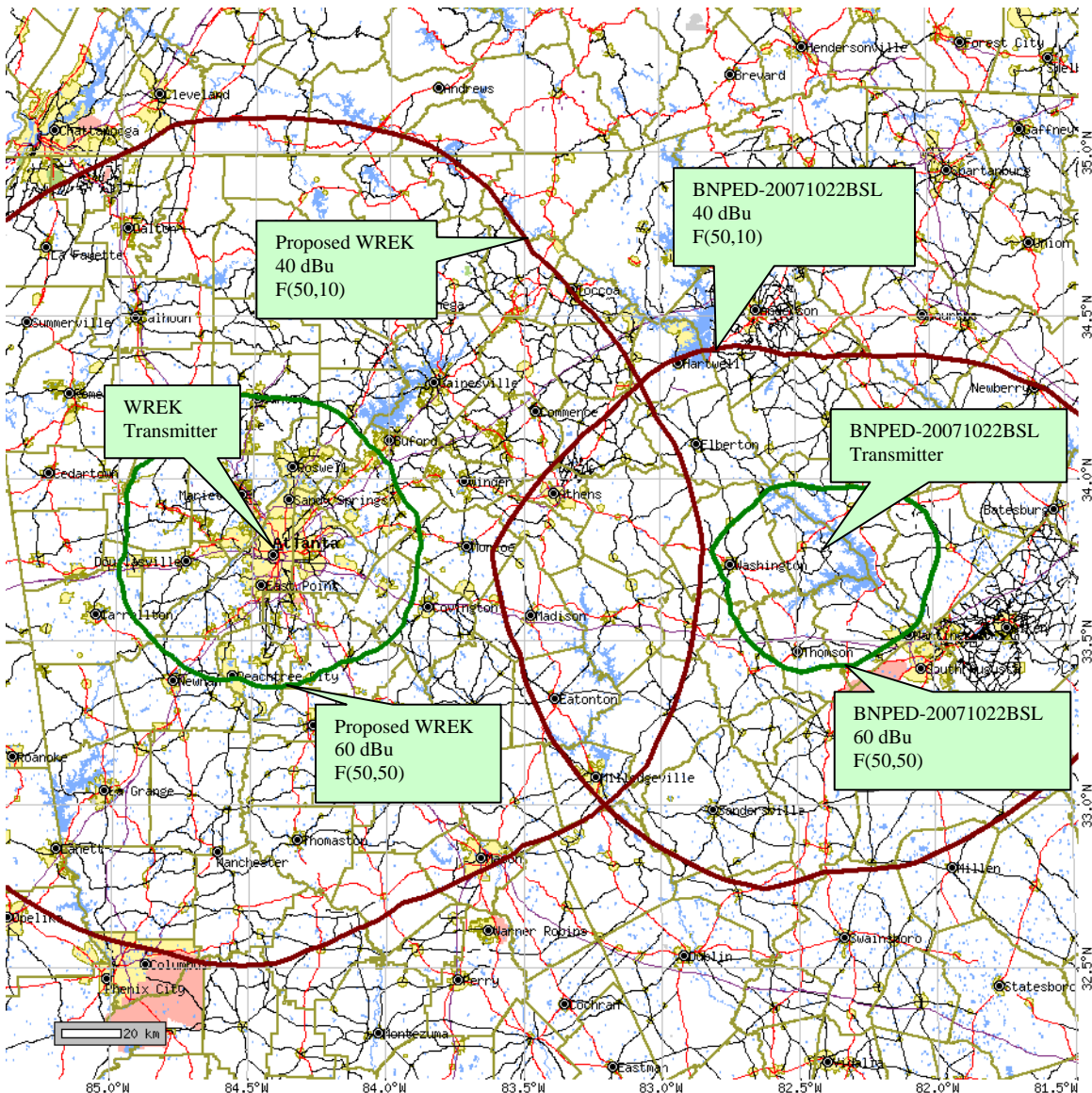


Figure 10. Predicted §73.509 contour protection in relation to BNPED-20071022BSL, channel 216C2, MCCORMICK, SC.

BNPED-20071022BSL Details

Record Type.....	Application
Community of License.....	MCCORMICK, SC
Latitude (NAD27).....	33-46-28 N
Longitude (NAD27).....	82-24-35 W
Channel.....	216C2
Effective Radiated Power.....	25 kW
Antenna Height above Average Terrain.....	107 m

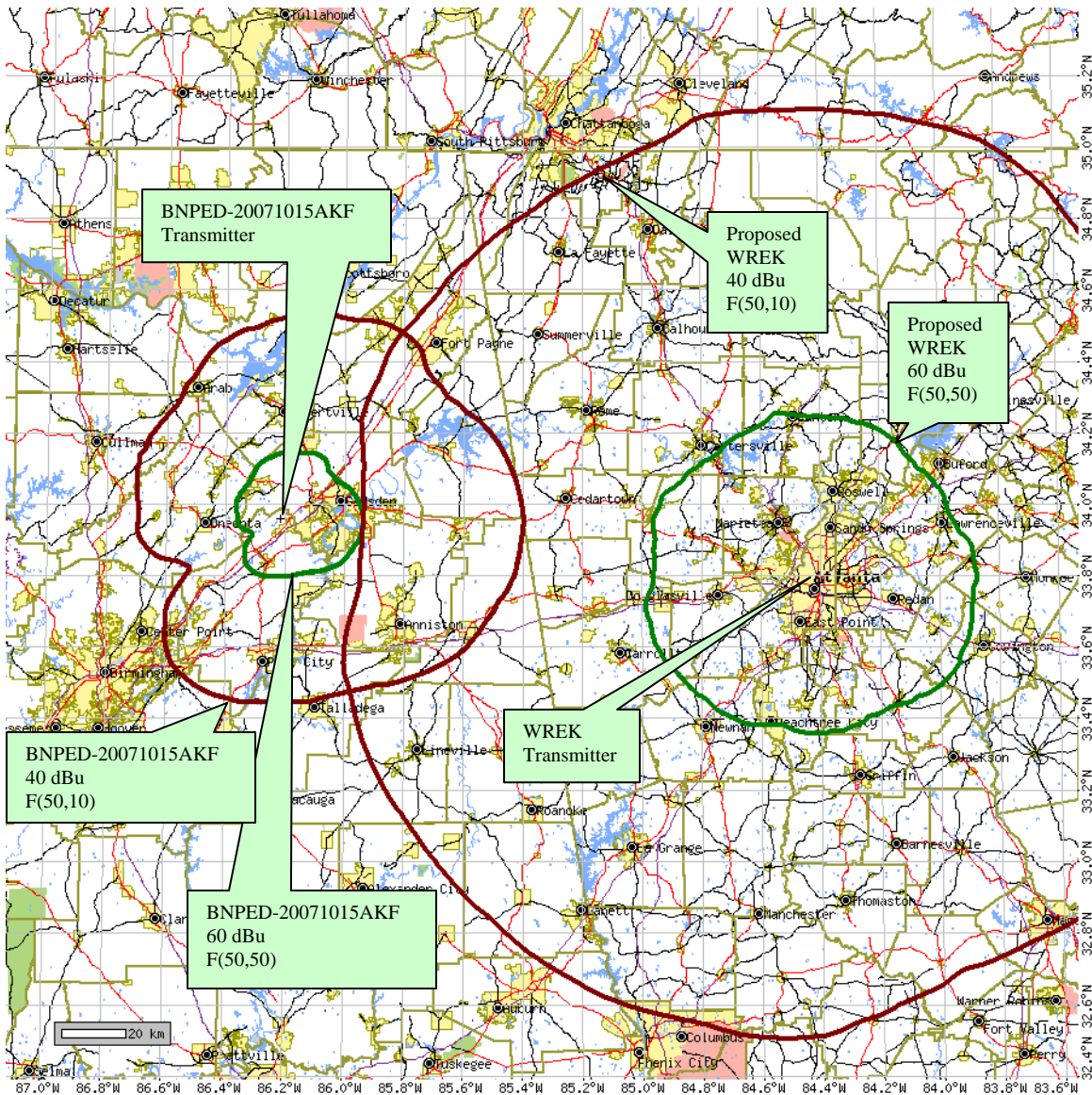


Figure 11. Predicted §73.509 contour protection in relation to BNPED-20071015AKF, channel 216A, STEELE, AL.

BNPED-20071015AKF Details

Record Type.....	Application
Community of License.....	STEELE, AL
Latitude (NAD27).....	33-57-30 N
Longitude (NAD27).....	86-13-01 W
Channel.....	216A
Effective Radiated Power.....	0.47 kW
Antenna Height above Average Terrain.....	230 m

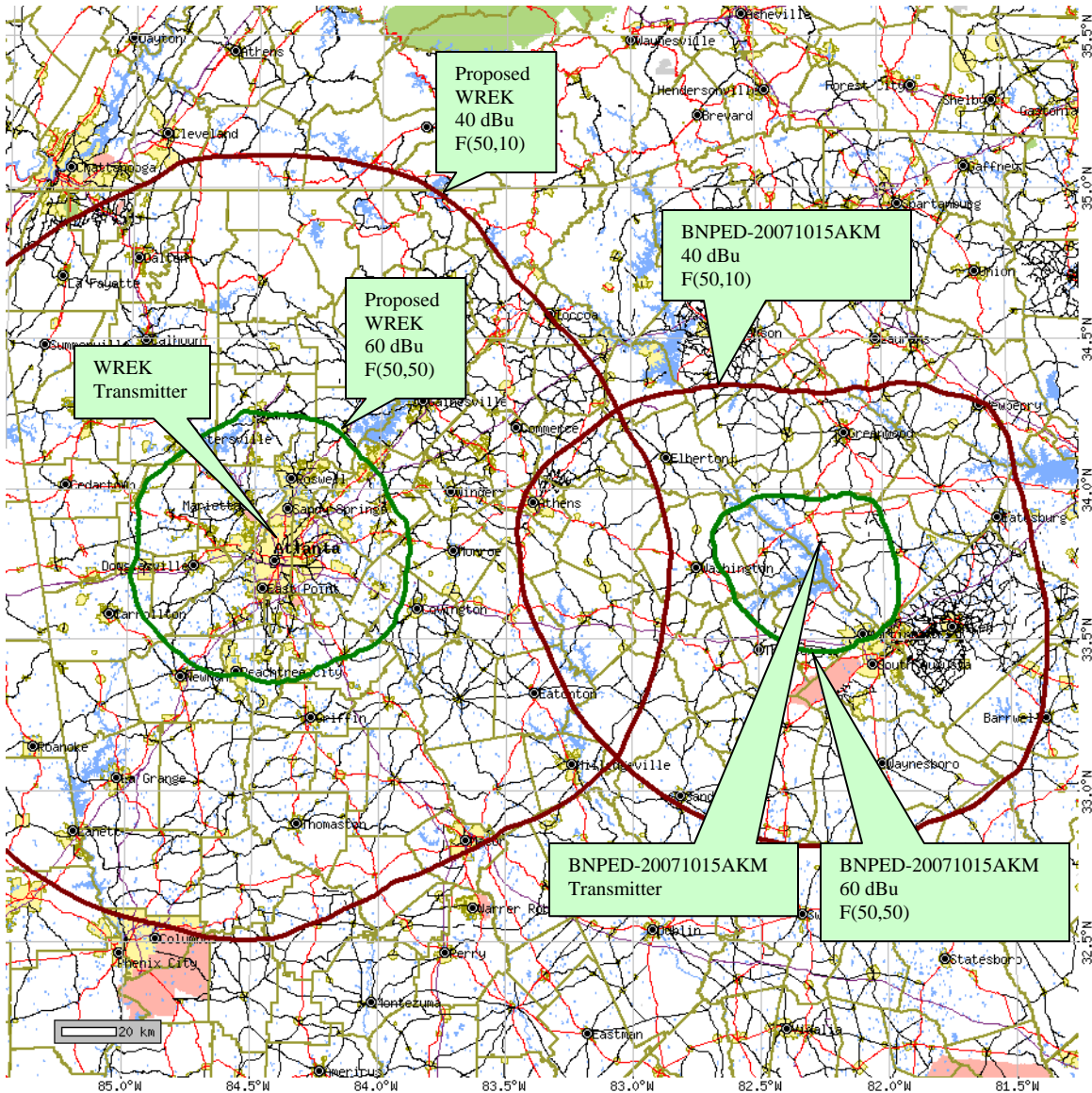


Figure 12. Predicted §73.509 contour protection in relation to BNPED-20071015AKM, channel 216C3, MCCORMICK, SC.

BNPED-20071015AKM Details

Record Type.....	Application
Community of License.....	MCCORMICK, SC
Latitude (NAD27).....	33-49-14 N
Longitude (NAD27).....	82-15-00 W
Channel.....	216C3
Effective Radiated Power.....	20 kW
Antenna Height above Average Terrain.....	98 m

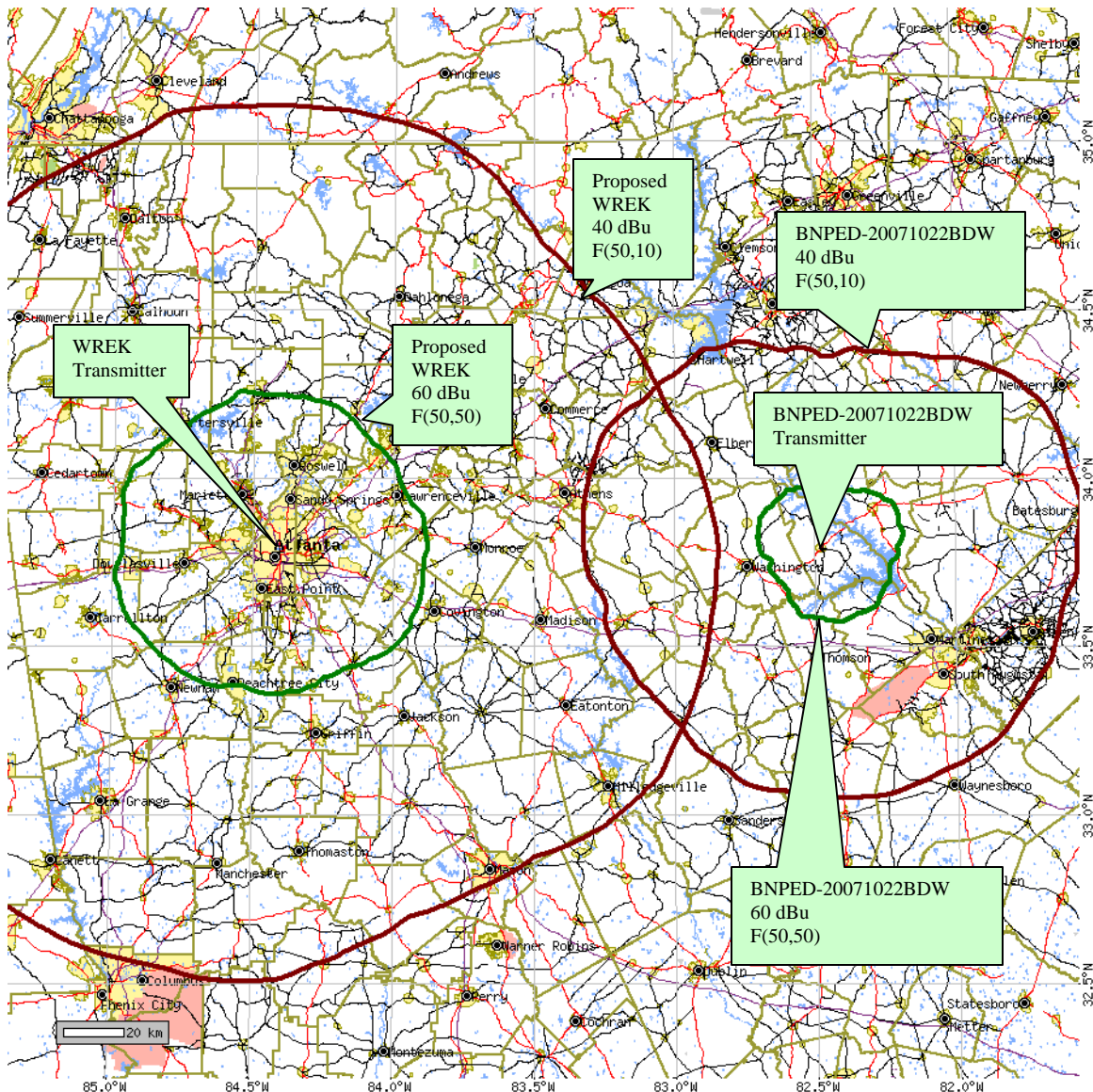


Figure 13. Predicted §73.509 contour protection in relation to BNPED-20071022BDW, channel 216C3, LINCOLNTON, SC.

BNPED-20071022BDW Details

Record Type.....	Application
Community of License.....	LINCOLNTON, SC
Latitude (NAD27).....	33-47-17 N
Longitude (NAD27).....	82-28-35 W
Channel.....	216C3
Effective Radiated Power.....	7 kW
Antenna Height above Average Terrain.....	62 m

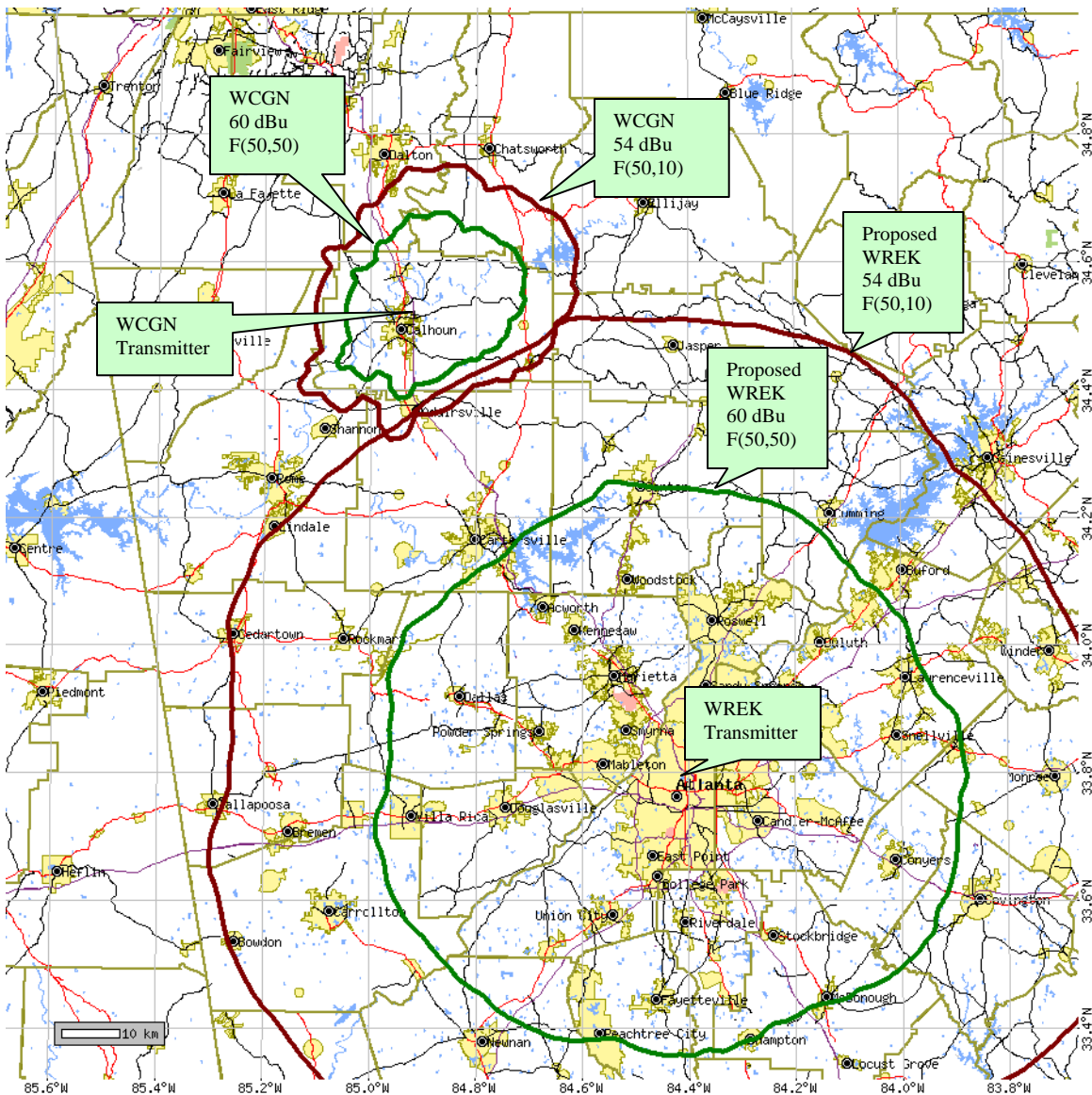


Figure 14. Predicted §73.509 contour protection in relation to WCGN (BMPED-20070907ACE), channel 217A, CALHOUN, GA.

WCGN (BMPED-20070907ACE) Details

Record Type.....	Application
Community of License.....	CALHOUN, GA
Latitude (NAD27).....	34-30-55 N
Longitude (NAD27).....	84-55-03 W
Channel.....	217A
Effective Radiated Power.....	6 kW
Antenna Height above Average Terrain.....	36 m