

PAINTING AND LIGHTING IN ACCORDANCE
WITH F.A.A. SPECIFICATIONS.

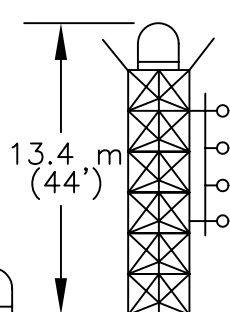
NOT DRAWN TO
SCALE OR SHAPE

N. LAT.: 38° 08' 41.7"
W. LON: 97° 57' 15.9" NAD 1927

N. LAT.: 38° 08' 41.7"
W. LON: 97° 57' 17.1" NAD 1983

81.7 m (268') AGL
80.5 m (264') AGL

OLD
BEACON



93.9 m (308') AGL
601.4 m (1973') AMSL

NEW CH. 240A
86.6 m (284') AGL
594.1 m (1949') AMSL

ERP = 4.7 kW
FREQ = 95.9 mHz
NO. OF BAYS: 4
118 m HAAT

MODIFICATION
OF EXISTING
STRUCTURE

FAA.: PENDING
ASR: 1032769 (Original)

507.6 m (1665') AMSL

DECEMBER 2004

MULLANEY ENGINEERING, INC.
GAITHERSBURG, MARYLAND

FIGURE 3
VERTICAL TOWER SKETCH

AD ASTRA PER ASPERA BROADCASTING, INC.
HUTCHINSON, KANSAS
CH. 240A 4.7 KW 113 M HAAT

