



Wisconsin's Radio Voice of the Master!

WRVM FM 102.7 Suring • WMVM FM 90.7 Goodman/Iron Mountain

Exhibit 10-6: Supervising Engineer Affidavit 10/28/2012

Alan F. Kilgore supervised the entire scope of the antenna installation process authorized by FCC Permit File Number BMPED-20120613ABC for radio station WYVM.

He was the climber/installer and tower crew chief, stressing the importance of the critical installation for proper alignment and orientation of parts necessary to achieve the desired outcome.

All printed manufacturer's installation instructions and recommendations were understood and followed by installation personnel. The Supervising Engineer was on site for the entire project.

The antenna was secured to the tower per manufacturer specifications using the provided custom-mounting brackets with the orientation 120° True.

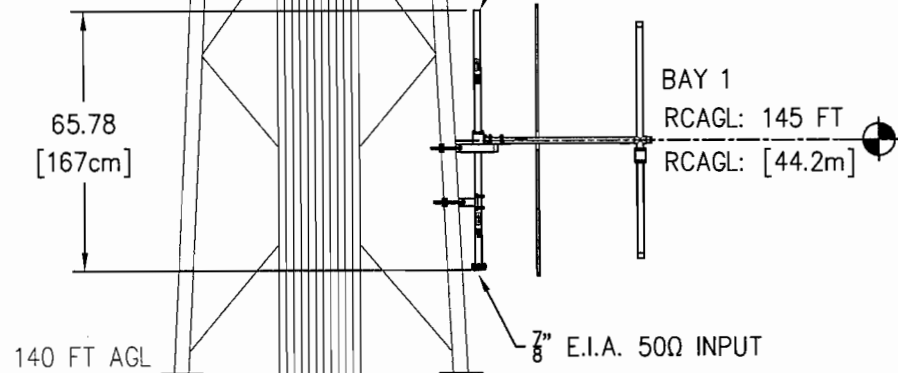
The tower and antenna were sighted for alignment by Charley Brinkmeier d/b/a Cornerstone Surveying for correct orientation.

To my knowledge all of the necessary requirements of the permit were met.

The person supervising the project is the Broadcast Engineer responsible for the technical operation of WYVM, who obtained a certification of "Senior Radio Engineer" from the Society of Broadcast Engineers (SBE) in 2000, holds a certification of "Professional Broadcast Engineer" from SBE since 2005, has held FCC General Radiotelephone License PG-6-18888 since 1974 and has held Amateur Radio License WB4THU since 1971.

Alan F Kilgore, CPBE
Chief Operator WRVM, WMVM, WHJL & WYVM
WRVM, Inc.

160 FT AGL



140 FT AGL

SHORTING STUB

BAY 1

RCAGL: 145 FT

RCAGL: [44.2m]

7" E.I.A. 50Ω INPUT

15" FEED LINES--TYPICAL

SPECIFICATIONS

LENGTH: 5.48 FT [1.67m]

POLARIZATION: VERTICAL

GAIN: 1.72 (2.37 dB)

WEIGHT: 68 LB [30.8 Kg]

WINDAREA: 5.17 FT²

TIA-222-F (NO ICE)

REV.	MADE BY CHECKED BY	DATE	CHANGE

This drawing is loaned subject to the express understanding and agreement that the drawing and information therein contained are, and shall remain the property of PSI, and will not be otherwise utilized or disposed of, directly or indirectly, and will not be used in whole or in part or assist in making or finish any information for the making of drawings, prints or other reproductions hereof, or for the design or making of any item, parts, object, apparatus or parts thereof, except upon the written permissions of PSI first obtained. The acceptance of this drawing will be construed as an acceptance of the forgoing agreement.

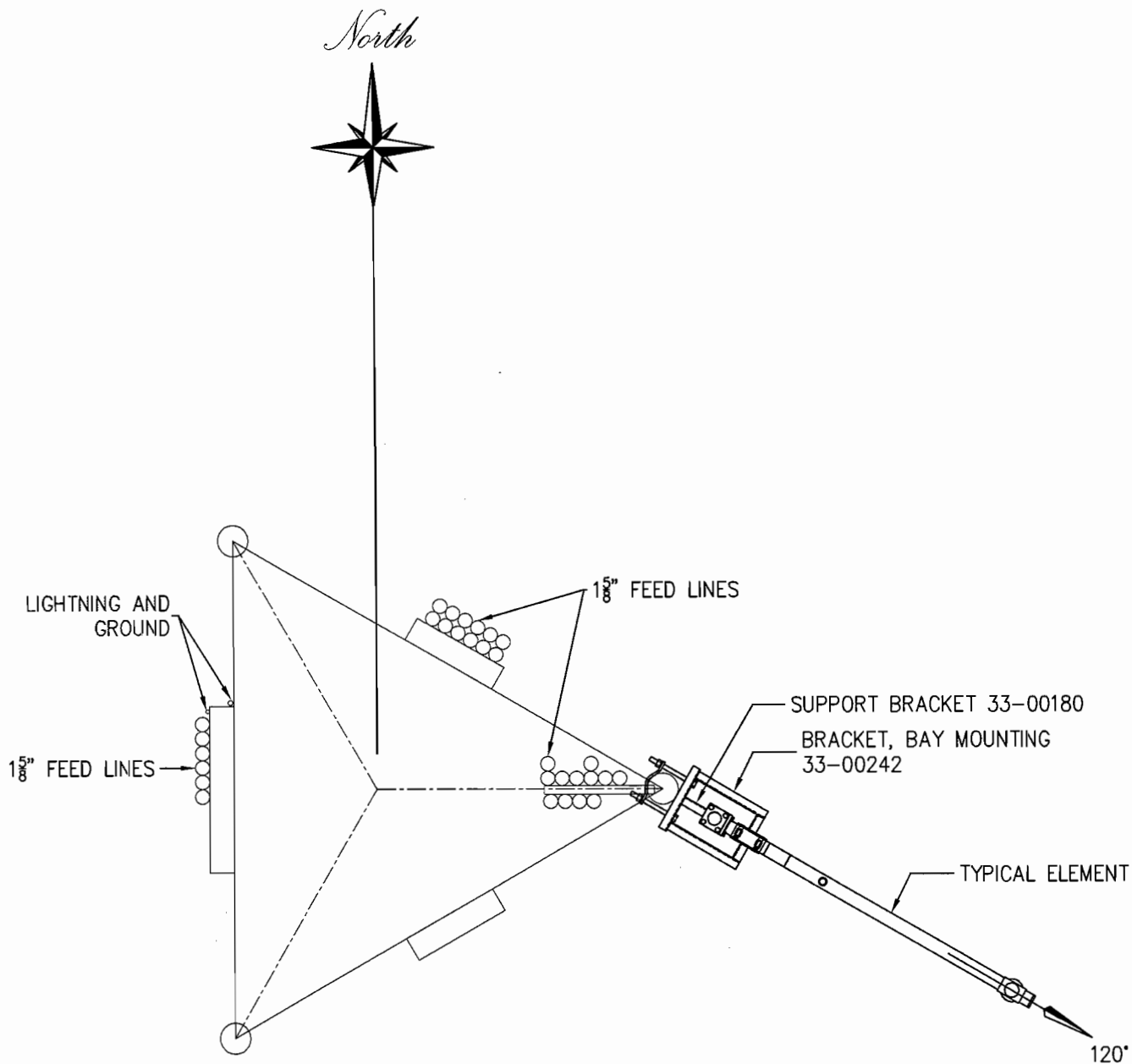
SIZE
A

PROPAGATION SYSTEMS, INC.

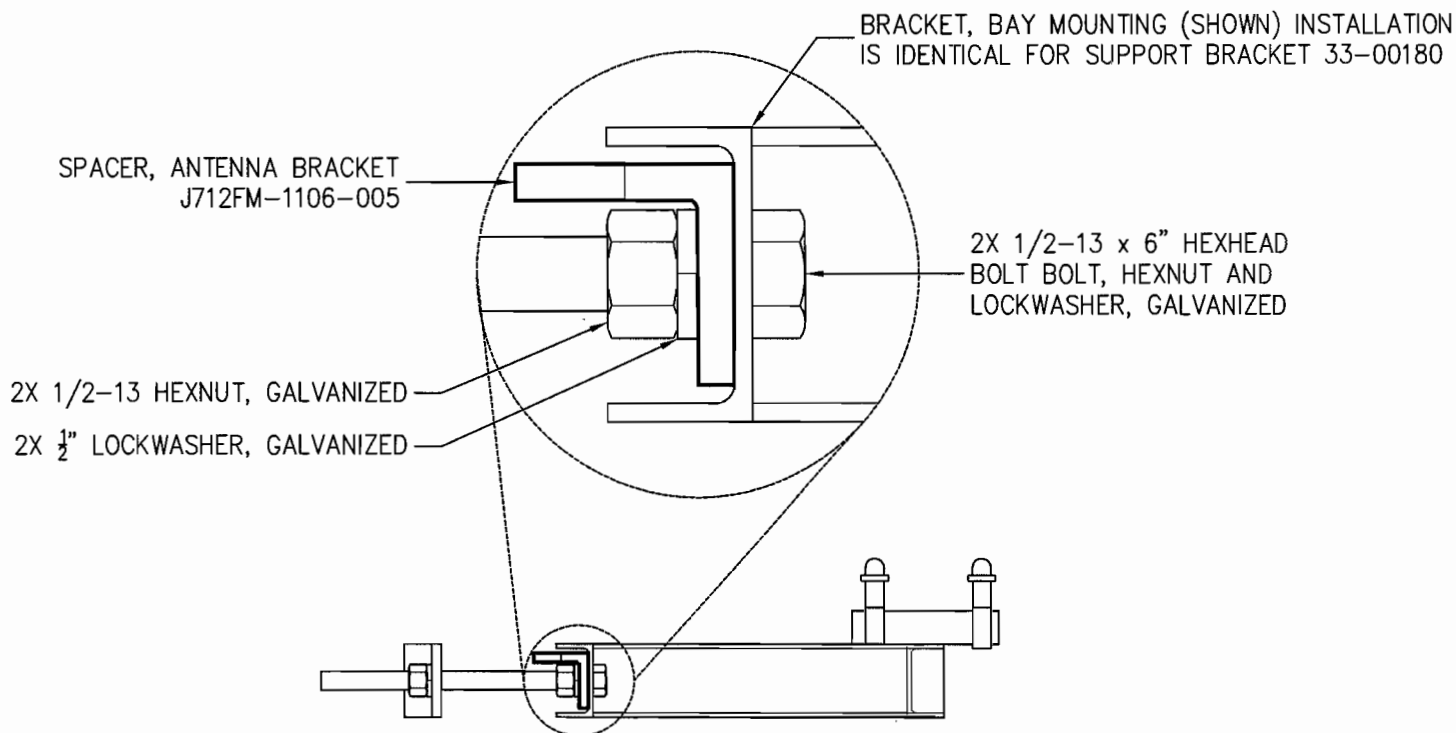
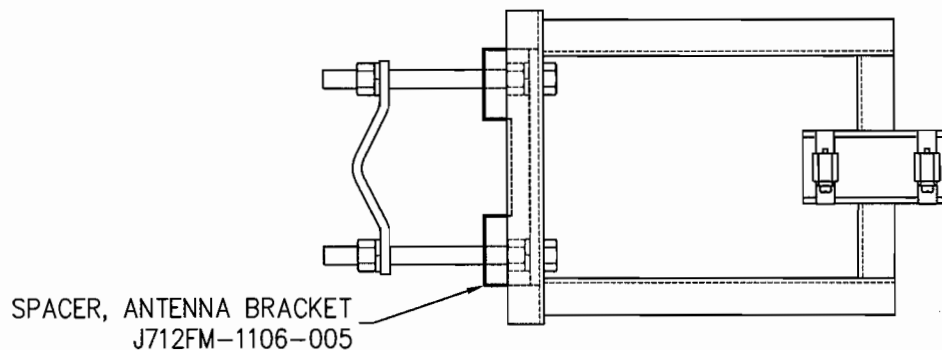
Ebensburg, Pennsylvania USA 814-472-5540

ELEVATIONS AND SPECIFICATIONS

MODEL:	PSIFMV-1-DA	DRAWN BY:	D.G. Kellar	DATE:	8/14/12
CHANNEL/ FREQUENCY:	90.9 MHz	APPROVED BY:		DATE:	
SCALE:	1:50	DRAWING NO.:	J712FM-1106-001	REV.	



PROPAGATION SYSTEMS, INC. Ebensburg, Pennsylvania USA 814-472-5540			
PLAN VIEW AND ORIENTATION			
MODEL: PSIFMV-1-DA CHANNEL/FREQUENCY: 90.9 MHz SCALE: 1:20	DRAWN BY: D.G. Kellar APPROVED BY: DRAWING NO.: J712FM-1106-002	DATE: 8/14/12 DATE: REV.	SIZE: A
This drawing is loaned subject to the express understanding and agreement that the drawing and information therein contained are, and shall remain the property of PSI, and will not be otherwise utilized or disposed of, directly or indirectly, and will not be used in whole or in part or assist in making or finish any information for the making of drawings, prints or other reproductions hereof, or for the design or making of any item, parts, object, apparatus or parts thereof, except upon the written permissions of PSI first obtained. The acceptance of this drawing will be construed as an acceptance of the forgoing agreement.			



REV.	MADE BY CHECKED BY	DATE	CHANGE

This drawing is loaned subject to the express understanding and agreement that the drawing and information therein contained are, and shall remain the property of PSI, and will not be otherwise utilized or disposed of, directly or indirectly, and will not be used in whole or in part or assist in making or finish any reproductions hereof, or for the design or making of any item, parts, object, apparatus or parts thereof, except upon the written permissions of PSI first obtained. The acceptance of this drawing will be construed as an acceptance of the foregoing agreement.

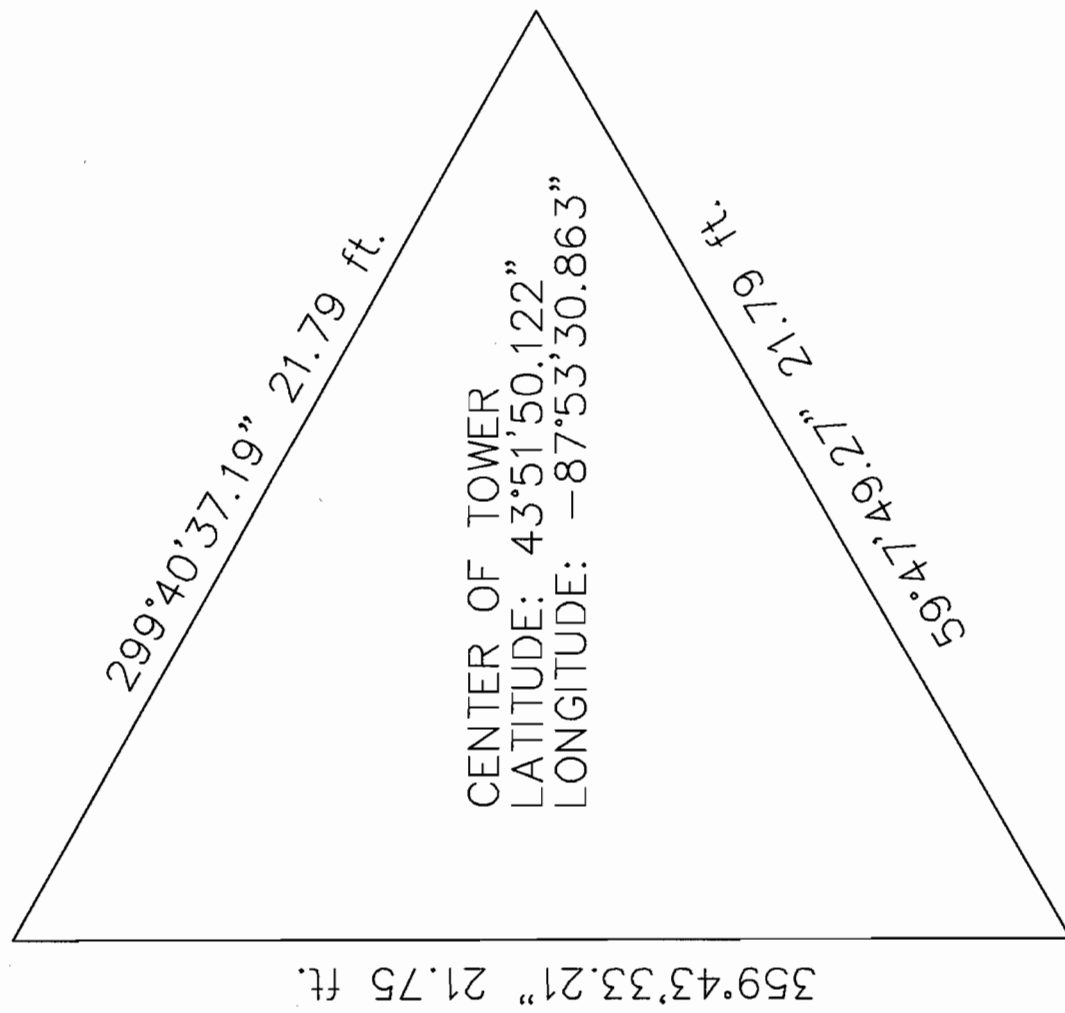
SIZE
A

PROPAGATION SYSTEMS, INC.

Ebensburg, Pennsylvania USA 814-472-5540

SPACER, ANTENNA BRACKET, INSTALLATION

MODEL: PSIFMV-1-DA	DRAWN BY: D.G. Kellar	DATE: 8/14/12
CHANNEL/ FREQUENCY: 90.9 MHz	APPROVED BY:	DATE:
SCALE: 1:5.33	DRAWING NO.: J712FM-1106-006	REV.



A **N**

