

**Family Stations, Inc.
KPFR (CP), Pine Grove, OR
Amendment to pending Modification BMPED-20050209AVB
Facility ID 85834**

**Exhibit 15
May 2005**

This minor amendment to the pending modification contains a change (decrease) in the directional pattern values from 340 degrees to 80 degrees in order to eliminate overlap with station KBNOFM (LIC), White Salmon, WA, due to a discrepancy in the HAAT's derived from the 30 second terrain database furnished by V-Soft Communications and the 30 second terrain database used by the FCC.

The following parameters contained in the original modification application remain the same:

	FROM	TO
CHANNEL	CH 208	No Change
COORDINATES	45-20-01 / 121-42-45	45-19-58 / 121-42-48
SITE AMSL	1853 meters	1835 meters
Tower AGL	33 meters	20 meters
Tower AMSL	1886 meters	1855 meters
COR AGL	33 meters	18 meters
COR AMSL	1886 meters	1853 meters
ERP	5.2 kW vertical, DA	7.0 kW vertical, DA
HAAT	540 meters	510 meters
CLASS	C1	C1

The proposed 1 mV/m contour will overlap the existing 1 mV/m contour and continue to provide 1 mV/m contour coverage over the community of license of Pine Grove, OR. KPFR will operate in compliance with all applicable FCC rules and regulations including those not specifically addressed in this minor modification amendment.

The below listed pages of this Exhibit contains information as indicated.

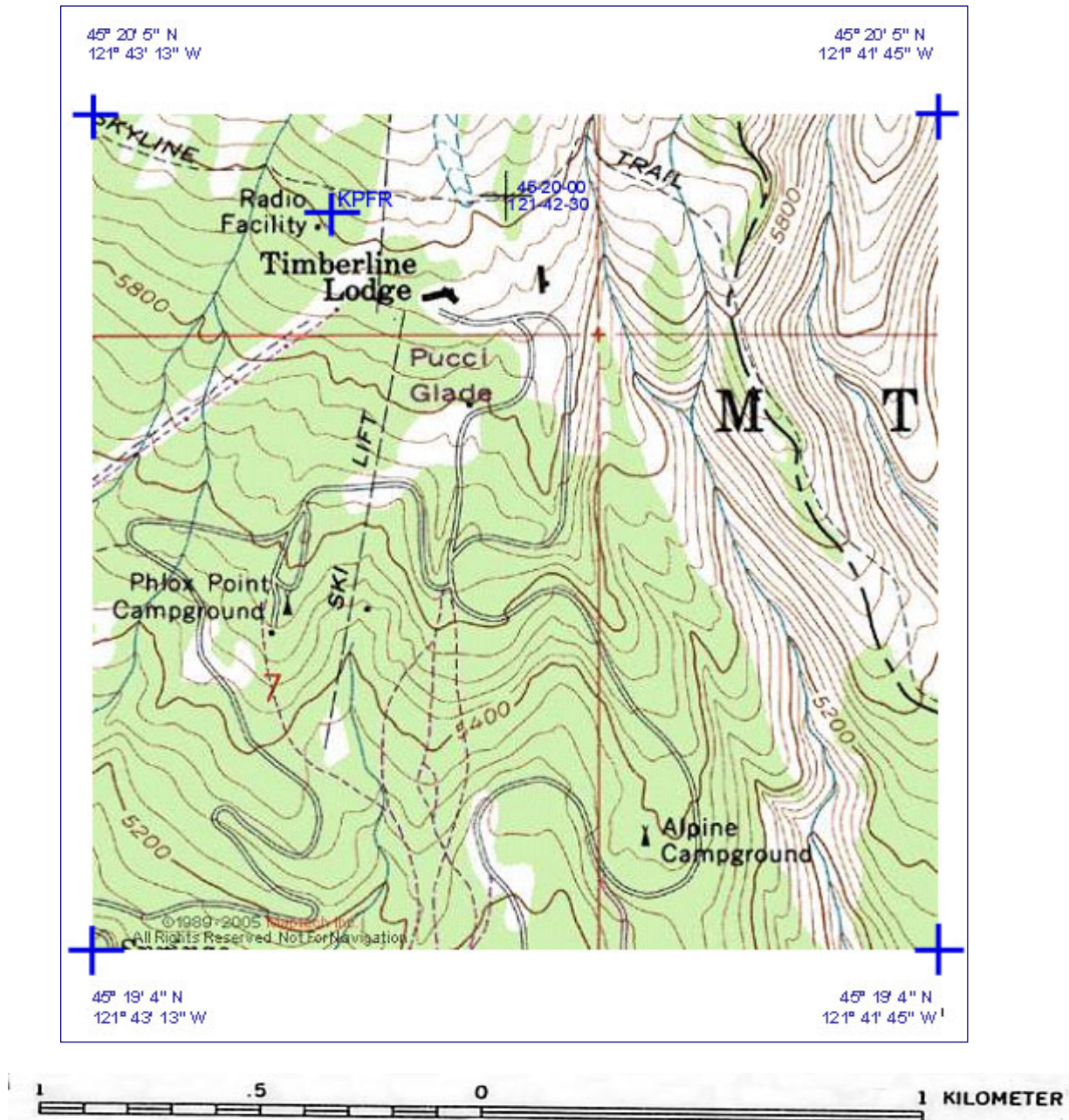
Page 2	Tabulation of HAAT / ERP / distance to 1 mV/m contour (amended)
Page 3	7.5 minute topo map showing site location (no change)
Page 4	1 mV/m contour map (amended)
Page 5	Existing and proposed 1 mV/m contour map (amended)
Page 6 - 22	Allocation Study (amended)

Tabulation of HAAT / ERP / distances to 1 mV/m contour

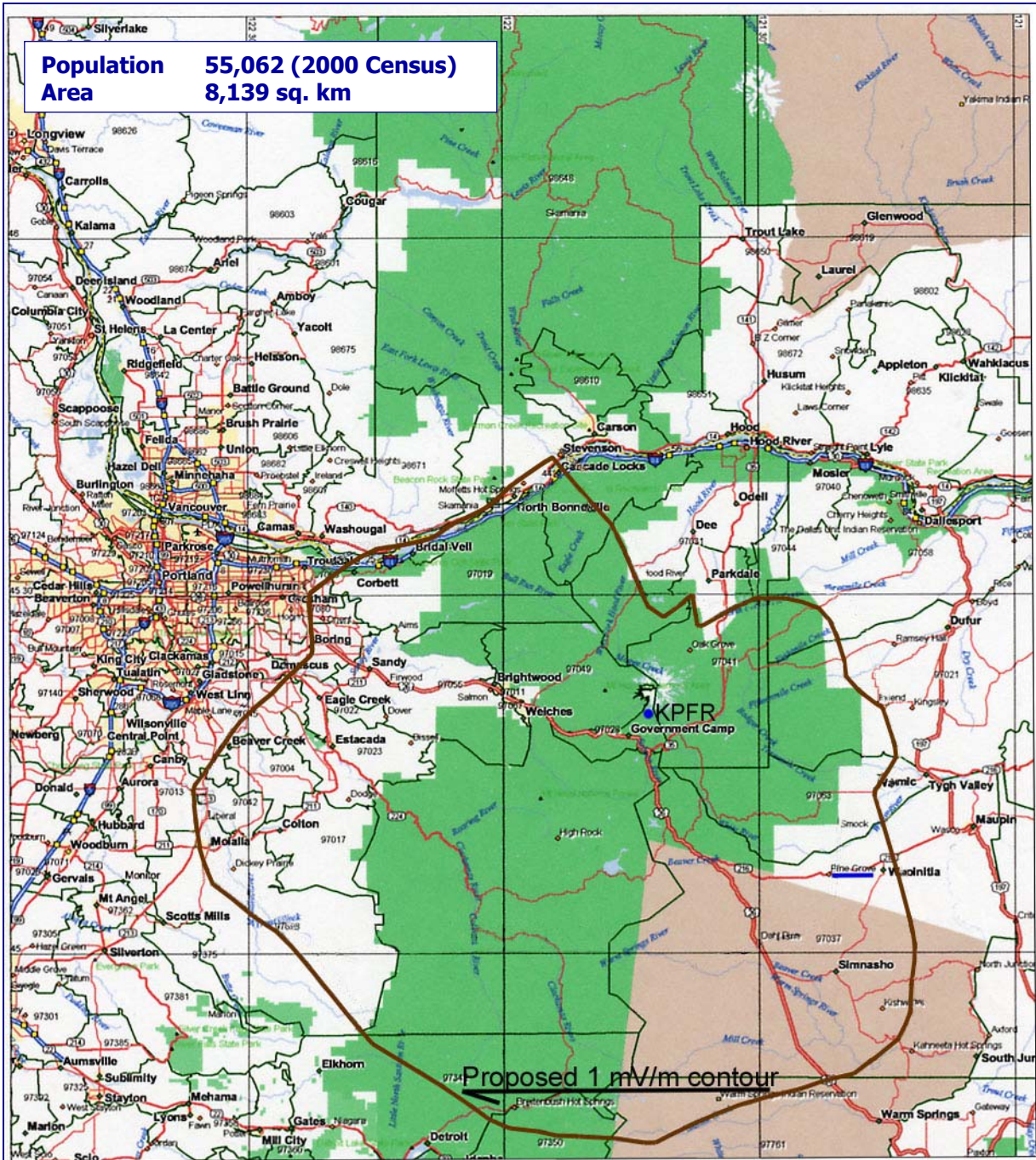
45-19-58 / 121-42-48 7.0 kW ERP Vertical-only DA 510 meters HAAT 1853 meters COR AMSL

Azimuth	HAAT (meters)	ERP (kW)	ERP (dBk)	Relative Field	60 dBu (km)
0	85.5	0.935	-0.292	0.365	16.7
10	69.8	0.935	-0.292	0.365	14.9
20	118.6	0.935	-0.292	0.365	20.0
30	74.0	0.935	-0.292	0.365	15.4
40	171.6	0.935	-0.292	0.365	23.7
45	243.8	0.935	-0.292	0.365	27.8
50	255.3	0.935	-0.292	0.365	28.4
60	330.0	0.935	-0.292	0.365	32.3
70	329.6	0.935	-0.292	0.365	32.3
80	321.0	0.935	-0.292	0.365	31.8
90	362.3	1.480	1.703	0.460	37.5
100	417.2	1.480	1.703	0.460	39.9
110	368.8	1.480	1.703	0.460	37.8
120	427.4	2.345	3.701	0.579	44.2
130	540.3	3.715	5.670	0.729	54.8
135	613.1	4.740	6.758	0.823	60.4
140	638.4	5.885	7.697	0.917	63.5
150	628.9	7.000	8.451	1.000	65.0
160	579.6	7.000	8.451	1.000	63.1
170	584.9	7.000	8.451	1.000	63.3
180	686.2	7.000	8.451	1.000	67.1
190	672.3	7.000	8.451	1.000	66.6
200	722.0	7.000	8.451	1.000	68.3
210	661.7	7.000	8.451	1.000	66.2
220	685.7	7.000	8.451	1.000	67.0
225	631.4	7.000	8.451	1.000	65.1
230	647.2	7.000	8.451	1.000	65.6
240	672.2	7.000	8.451	1.000	66.6
250	882.2	7.000	8.451	1.000	73.1
260	924.9	5.885	7.697	0.917	72.2
270	748.7	3.715	5.670	0.729	62.5
280	599.4	2.345	3.701	0.579	52.9
290	834.2	1.480	1.703	0.460	55.9
300	822.5	0.935	-0.292	0.365	51.2
310	720.6	0.590	-2.291	0.290	43.7
315	712.5	0.590	-2.291	0.290	43.5
320	638.1	0.590	-2.291	0.290	41.0
330	542.7	0.935	-0.292	0.365	41.7
340	582.7	0.935	-0.292	0.365	43.3
350	280.9	0.935	-0.292	0.365	29.8

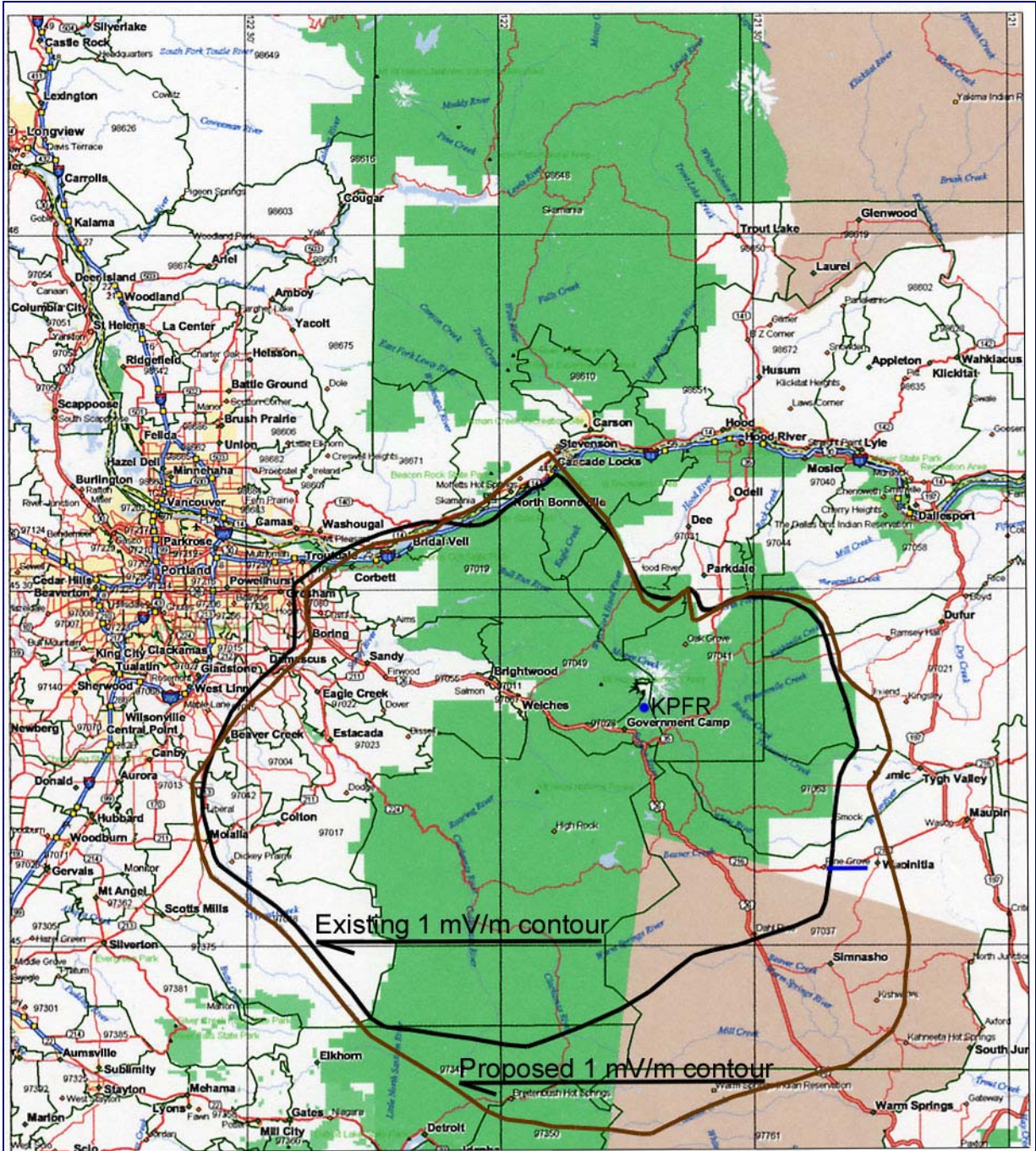
7.5 minute topo map showing site location



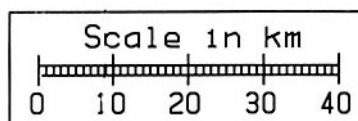
1 mV/m contour coverage map



Existing & proposed 1 mV/m contour map



Existing and proposed site only .11 km apart; scale of map does not allow for separate site showing



Family Stations, Inc.
KPFR (CP), Pine Grove, OR
Amendment to pending Modification BMPED-20050209AVB
Facility ID 85834

Exhibit 15
May 2005

Allocation Study

This Allocation Study demonstrates compliance with all minimum distance separation and lack of prohibited overlap requirements.

KPFR (CP Mod), CH 208 C1, 7.0 kW ERP (V, DA), 1853 m COR AMSL, 510 m HAAT, 45-19-58 / 121-42-48

CH CALL LOCATION	AZI. <--	Latitude Longitude FILE NUMBER	ERP kW HAAT m	ERP(to ref.) HAAT(to ref.)	Dist. km COR m	PRO INT	INT	IN	OUT
206C2 KMHD LIC Gresham, OR	284.7 104.7	45-30-58 122-43-59 BLED-19831223AH	7.1 302	7.1 299	82.37 377	46.9	2.9	23.0	32.59
206C1 KMHD CP Gresham, OR	284.7 104.7	45-38-58 122-43-59 BPED-19970625ME	7.9 441	7.9 454	82.37 532	57.0	2.9	22.21	22.46
207A NEW APP Bend, OR	166.9 346.9	43-56-56 121-16-05 BPED-19981127MD	1.8 175	1.8 341	157.79 1484	38.0	89.2	40.32	30.61
207A NEW APP Sisters, OR	167.6 347.6	44-04-40 121-19-48 BPED-19970925MF	1.35 183	1.35 298	142.73 1321	33.4	89.7	31.65	19.60
207A NEW APP Sisters, OR	167.6 347.6	44-04-40 121-19-49 BPED-19981203MF	1.0 161	1.0 276	142.73 1300	30.0	89.7	36.56	23.03
207A NEW APP Deschutes River Wood, OR	166.9 346.9	43-56-56 121-16-05 BPED-19981125MB	1.8 175	1.8 341	157.79 1484	38.0	89.2	40.32	30.61
207A KBNOFM LIC White Salmon, WA	25.6 205.6	45-43-23 121-26-42 BLED-20010611AFC	.016 336	.016 387	48.18 695	12.8	24.4	12.74	10.95
207C3 NEW APP Redmond, OR	167.6 347.6	44-04-40 121-19-49 BPED-19981203MO	5.0 166	5.0 280	142.73 1304	42.7	89.7	18.49	10.28
208A KTCB CP Tillamook, OR	275.7 95.7	45-27-59 123-55-11 BPED-19990503MA	.380 351	.380 343	173.40 448	26.6	132.8	39.98	14.04
208C2 KSOH LIC Wapato, WA	34.3 214.3	46-31-42 120-31-16 BLED-19920318KA	9.5 297	9.5 360	161.89 655	53.5	57.9	16.16	50.54
208A KJVH LIC Longview, WA	316.7 136.7	46-09-52 122-51-13 BLED-19870630KA	.100 238	.100 137	128.13 427	12.0	111.1	44.64	5.04

**Family Stations, Inc.
 KPFR (CP), Pine Grove, OR
 Amendment to pending Modification BMPED-20050209AVB
 Facility ID 85834**

**Exhibit 15
 May 2005**

Allocation Study

CH CALL LOCATION	AZI. <--	Latitude Longitude FILE NUMBER	ERP kW HAAT m	ERP(to ref.) HAAT(to ref.)	Dist. km COR m	PRO INT	INT	IN	OUT
209C KLCC LIC Eugene, OR	217.3 37.3	44-00-05 123-06-48 BLED-19900313KB	81.0 354	81.0 336	184.98 546	72.9	99.2	11.43	12.85
210C2 KBPSFM CP Portland, OR	284.8 104.8	45-30-59 122-43-58 BMPED-20040909ACY	3.7 446	3.7 451	82.35 529	49.7	2.9	23.54	29.80
210C2 KBPSFM LIC Portland, OR	284.7 104.7	45-30-58 122-43-59 BLED-19830304AE	8.7 293	8.7 292	82.37 370	48.3	2.9	22.69	31.21
210C2 NEW APP Redmond, OR	148.7 328.7	44-26-17 120-57-14 BPED-19981203MO	.750 676	.750 725	116.13 1735	46.2	5.1	49.38	64.82
211A KQHR LIC Hood River, OR	26.3 206.3	45-43-20 121-26-16 BLED-2001210ABX	.044 337	.044 369	48.34 695	16.2	1.61	31.57	30.57
I.F. Relationships:									
262C KKRZ LIC Portland, OR		45-31-21 122-44-45 BLH-20011214AAE	100.0 470		83.5 561	41.0 km required separation 42.5 km clear			

The remaining pages of this Exhibit contain detailed information on the relationship between KPFR, CH 208 (CP Mod Amended) and the following:

Pages 8 - 10	CH 207A	KBNOFM (LIC), White Salmon, WA
Pages 11 - 13	CH 207C3	NEW APP, BPED-19981203MO, Redmond, OR
Pages 14 - 16	CH 208A	KTCB (CP), Tillamook, OR
Pages 17 - 19	CH 208A	KJVH (LIC), Longview, WA
Pages 20 - 22	CH 209C	KLCC (LIC), Eugene, OR

Allocation Study

Tabulation of

CH 208, KPFR (CP Mod) 60 dBu protected contour & CH 207, KBNOFM (LIC) 54 dBu interference contour

KPFR Channel= 208 Max ERP = 7 kW RCAMSL = 1853 M N. Lat = 451958 W. Lng = 1214248				KBNO Channel = 207 Max ERP = .016 kW RCAMSL = 695 M N. Lat = 454323 W. Lng = 1212642				
Protected 60 dBu				Interfering 54 dBu				
Azimuth (degrees)	ERP (kW)	HAAT (m)	Dist (km)	Azimuth (degrees)	ERP (kW)	HAAT (m)	Dist (km)	Actual (dBu)
0.0	0.935	85.5	16.7	218.1	0.016	464.2	33.9	46.2
10.0	0.935	69.8	14.9	212.6	0.016	444.9	34.0	45.7
20.0	0.935	118.6	20.0	209.8	0.016	420.3	28.4	48.1
30.0	0.935	74.0	15.4	203.8	0.016	374.0	32.8	44.5
40.0	0.935	171.6	23.7	192.8	0.016	180.2	25.9	42.3
50.0	0.935	255.3	28.4	178.1	0.016	221.3	25.1	44.6
60.0	0.935	330.0	32.3	165.5	0.016	317.3	28.1	45.6
70.0	0.935	329.6	32.3	163.8	0.016	340.2	33.7	43.2
80.0	0.935	321.0	31.8	164.6	0.016	329.3	39.3	40.3
90.0	1.480	362.3	37.5	159.1	0.016	391.0	46.4	39.0
100.0	1.480	417.2	39.9	160.0	0.016	384.5	53.5	36.1
110.0	1.480	368.8	37.8	165.5	0.016	317.3	58.2	32.3
120.0	2.345	427.4	44.2	165.2	0.016	321.2	67.8	28.9
130.0	3.715	540.3	54.8	165.1	0.016	322.5	81.3	24.2
140.0	5.885	638.4	63.5	167.8	0.016	298.2	94.1	19.4
150.0	7.000	628.9	65.0	173.4	0.016	263.0	100.3	16.4
160.0	7.000	579.6	63.1	179.7	0.016	206.0	102.6	13.9
170.0	7.000	584.9	63.3	185.4	0.016	161.2	106.2	11.6
180.0	7.000	686.2	67.1	190.8	0.016	136.8	112.4	9.5
190.0	7.000	672.3	66.6	196.7	0.016	273.6	113.7	13.0
200.0	7.000	722.0	68.3	202.4	0.016	361.4	116.4	15.3
210.0	7.000	661.7	66.2	208.3	0.016	405.4	114.3	17.2
220.0	7.000	685.7	67.0	214.1	0.016	454.0	114.4	18.6
230.0	7.000	647.2	65.6	219.8	0.016	469.0	111.4	19.8
240.0	7.000	672.2	66.6	225.7	0.016	496.0	109.8	21.0
250.0	7.000	882.2	73.1	232.7	0.016	502.4	112.7	20.4
260.0	5.885	924.9	72.2	238.7	0.016	469.6	107.7	20.8
270.0	3.715	748.7	62.5	242.5	0.016	456.8	94.0	24.4
280.0	2.345	599.4	52.9	244.9	0.016	452.4	80.6	28.6
290.0	1.480	834.2	55.9	251.7	0.016	458.5	77.3	29.8
300.0	0.935	822.5	51.2	254.7	0.016	492.9	67.6	33.9
310.0	0.590	720.6	43.7	254.3	0.016	486.7	56.5	37.6
320.0	0.590	638.1	41.0	255.8	0.016	513.9	48.8	41.1
330.0	0.935	542.7	41.7	260.1	0.016	613.1	42.4	45.3
340.0	0.935	582.7	43.3	265.7	0.016	630.6	35.8	48.3
350.0	0.935	280.9	29.8	241.6	0.016	459.4	29.6	48.2

Allocation Study

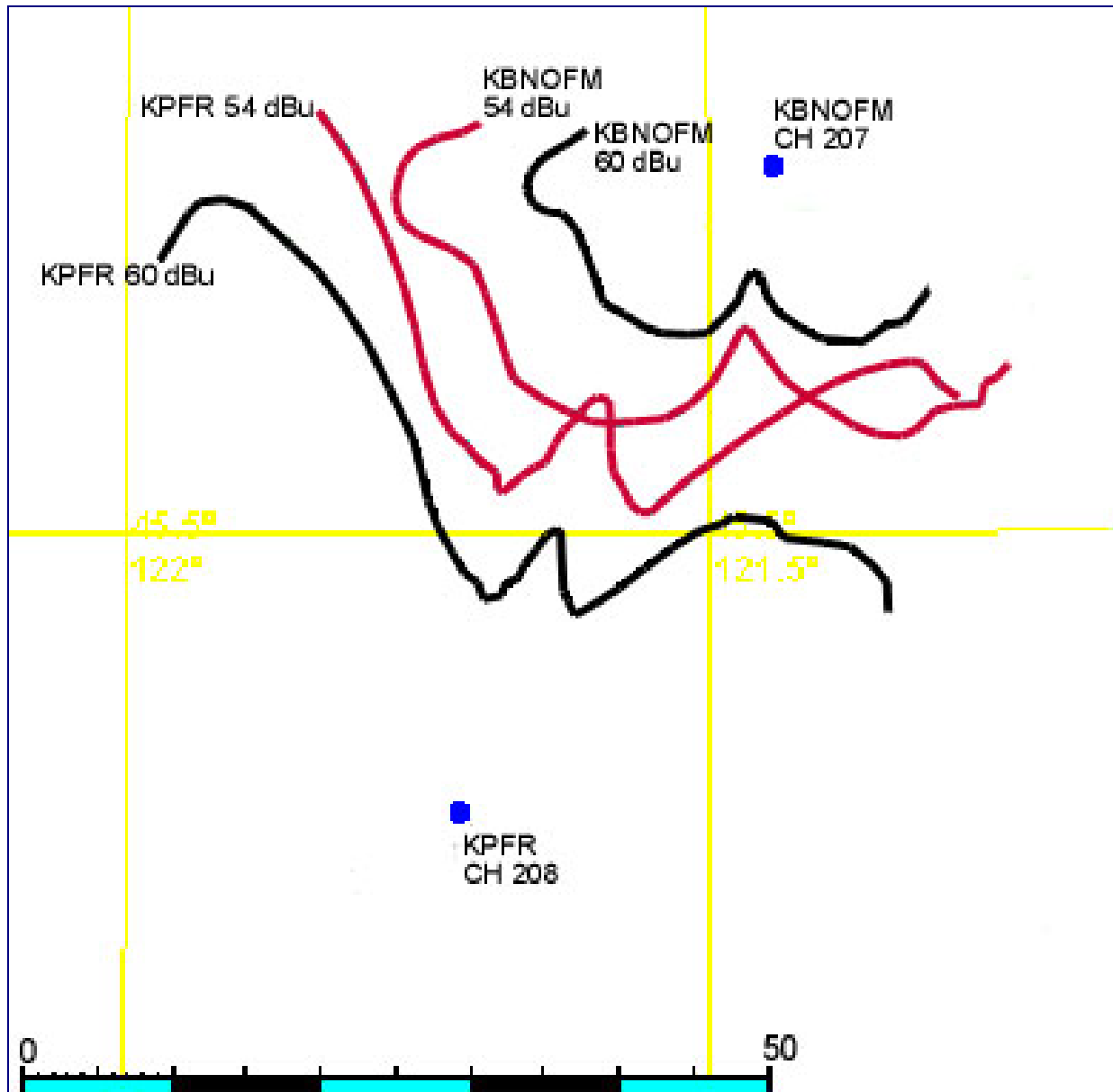
Tabulation of

CH 207, KBNOFM (LIC) 60 dBu protected contour & CH 208, KPFR (CP Mod) 54 dBu interference contour

KBNOFM Channel= 207 Max ERP = .016 kW RCAMSL = 695 M N. Lat = 454323 W. Lng = 1212642				KPFR Channel = 208 Max ERP = 7 kW RCAMSL = 1853 M N. Lat = 451958 W. Lng = 1214248				
Protected 60 dBu				Interfering 54 dBu				
Azimuth (degrees)	ERP (kW)	HAAT (m)	Dist (km)	Azimuth (degrees)	ERP (kW)	HAAT (m)	Dist (km)	Actual (dBu)
0.0	0.016	193.3	9.2	21.7	0.935	103.3	56.5	41.3
10.0	0.016	160.0	8.3	23.5	0.935	89.7	56.2	40.4
20.0	0.016	91.8	6.3	25.1	0.935	84.3	54.4	40.7
30.0	0.016	62.9	5.2	26.2	0.935	82.1	53.4	40.9
40.0	0.016	80.3	5.9	27.3	0.935	80.7	53.9	40.6
50.0	0.016	58.7	5.0	28.0	0.935	79.2	52.8	40.8
60.0	0.016	98.3	6.5	29.7	0.935	74.2	53.7	40.1
70.0	0.016	195.4	9.2	32.5	0.935	80.5	55.1	40.1
80.0	0.016	320.6	11.8	35.6	0.935	104.9	55.9	41.6
90.0	0.016	449.0	13.7	38.6	0.935	148.5	55.5	44.2
100.0	0.016	522.0	14.6	40.9	0.935	187.0	54.0	46.7
110.0	0.016	597.0	15.8	43.4	0.935	226.9	52.2	49.2
120.0	0.016	417.8	13.3	41.5	0.935	197.1	49.0	49.1
130.0	0.016	436.9	13.6	42.1	0.935	207.0	46.8	50.5
140.0	0.016	450.9	13.7	42.2	0.935	208.6	44.4	51.5
150.0	0.016	420.9	13.3	41.0	0.935	188.7	42.2	51.5
160.0	0.016	384.5	12.8	39.0	0.935	154.9	40.3	50.7
170.0	0.016	279.8	11.0	35.1	0.935	98.4	39.8	47.4
180.0	0.016	203.3	9.4	31.7	0.935	77.8	39.9	45.4
190.0	0.016	129.9	7.4	28.6	0.935	77.2	41.1	44.9
200.0	0.016	329.0	11.9	27.7	0.935	79.9	36.4	47.1
210.0	0.016	422.3	13.3	24.2	0.935	87.0	34.9	48.5
220.0	0.016	469.8	14.0	20.2	0.935	117.7	34.8	51.2
230.0	0.016	519.4	14.6	16.1	0.935	97.0	35.4	49.2
240.0	0.016	465.2	13.9	13.8	0.935	77.9	37.5	46.4
250.0	0.016	449.7	13.7	11.8	0.935	75.7	39.5	45.3
260.0	0.016	611.5	16.1	7.2	0.935	62.8	40.9	43.4
270.0	0.016	601.0	15.9	6.7	0.935	62.5	43.7	42.3
280.0	0.016	378.1	12.7	10.5	0.935	71.7	46.4	42.3
290.0	0.016	316.0	11.7	11.9	0.935	75.7	48.4	42.0
300.0	0.016	307.7	11.5	12.6	0.935	75.5	50.3	41.3
310.0	0.016	274.7	10.9	14.0	0.935	78.8	51.9	41.1
320.0	0.016	281.7	11.1	15.0	0.935	85.6	53.7	41.0
330.0	0.016	288.0	11.2	16.1	0.935	97.0	55.2	41.3
340.0	0.016	409.2	13.2	16.4	0.935	99.9	58.1	40.5
350.0	0.016	359.4	12.4	18.7	0.935	116.7	58.7	41.3

Allocation Study

Map of
CH 208, KPFR (CP Mod) & CH 207, KBNOFM (LIC) 60 dBu protected contours & 54 dBu interference contours



Allocation Study

Tabulation of

CH 208, KPFR (CP Mod) 60 dBu protected contour & CH 207, NEW (APP, Redmond) 54 dBu interference contour

KPFR Channel= 208 Max ERP = 7 kW RCAMSL = 1853 M N. Lat = 451958 W. Lng = 1214248				AP207 - BPED981203MO Channel = 207 Max ERP = 5 kW RCAMSL = 1304 M N. Lat = 440440 W. Lng = 1211949				
Protected 60 dBu				Interfering 54 dBu				
Azimuth (degrees)	ERP (kW)	HAAT (m)	Dist (km)	Azimuth (degrees)	ERP (kW)	HAAT (m)	Dist (km)	Actual (dBu)
0.0	1.480	85.5	18.9	349.2	5.000	284.8	161.2	28.6
10.0	1.480	69.8	16.9	350.1	5.000	286.8	158.5	29.1
20.0	1.480	118.6	22.3	351.9	5.000	290.4	162.0	28.5
30.0	1.480	74.0	17.5	352.1	5.000	290.9	156.1	29.6
40.0	1.480	171.6	26.2	355.2	5.000	302.0	160.1	29.1
50.0	1.480	255.3	31.7	357.8	5.000	309.7	159.9	29.3
60.0	1.480	330.0	35.9	0.3	5.000	311.0	157.4	29.8
70.0	1.480	329.6	35.8	1.3	5.000	311.3	151.8	30.8
80.0	1.480	321.0	35.4	1.8	5.000	311.5	145.7	32.0
90.0	1.480	362.3	37.5	2.9	5.000	311.4	139.6	33.2
100.0	1.480	417.2	39.9	3.9	5.000	310.1	132.8	34.6
110.0	1.480	368.8	37.8	2.3	5.000	311.6	126.6	36.0
120.0	2.345	427.4	44.2	3.9	5.000	310.1	117.6	37.9
130.0	3.715	540.3	54.8	6.3	5.000	306.9	104.9	41.2
140.0	5.885	638.4	63.5	6.5	5.000	306.6	91.4	45.5
150.0	7.000	628.9	65.0	1.4	5.000	311.4	83.2	48.2
160.0	7.000	579.6	63.1	353.7	5.000	295.5	80.7	48.5
170.0	7.000	584.9	63.3	345.8	5.000	276.5	79.6	48.3
180.0	7.000	686.2	67.1	337.1	5.000	281.0	78.6	48.8
190.0	7.000	672.3	66.6	330.4	5.000	267.9	85.0	46.3
200.0	7.000	722.0	68.3	324.4	5.000	250.0	92.6	43.3
210.0	7.000	661.7	66.2	322.3	5.000	241.8	103.9	39.6
220.0	7.000	685.7	67.0	320.1	5.000	233.4	114.8	36.6
230.0	7.000	647.2	65.6	320.3	5.000	234.2	126.4	34.2
240.0	7.000	672.2	66.6	320.3	5.000	234.2	137.9	32.0
250.0	7.000	882.2	73.1	319.1	5.000	229.7	151.4	29.4
260.0	5.885	924.9	72.2	321.4	5.000	238.4	162.5	27.6
270.0	3.715	748.7	62.5	326.4	5.000	256.1	167.5	27.1
280.0	2.345	599.4	52.9	331.0	5.000	269.3	169.9	26.8
290.0	1.480	834.2	55.9	332.4	5.000	272.3	178.9	25.3
300.0	0.935	822.5	51.2	335.7	5.000	278.8	181.1	25.0
310.0	0.590	720.6	43.7	339.2	5.000	281.6	179.3	25.4
320.0	0.590	638.1	41.0	341.7	5.000	278.5	180.0	25.2
330.0	0.935	542.7	41.7	343.8	5.000	276.9	182.9	24.6
340.0	1.480	582.7	47.7	345.8	5.000	276.5	190.1	23.2
350.0	1.480	280.9	33.2	348.2	5.000	282.2	175.9	26.0

Allocation Study

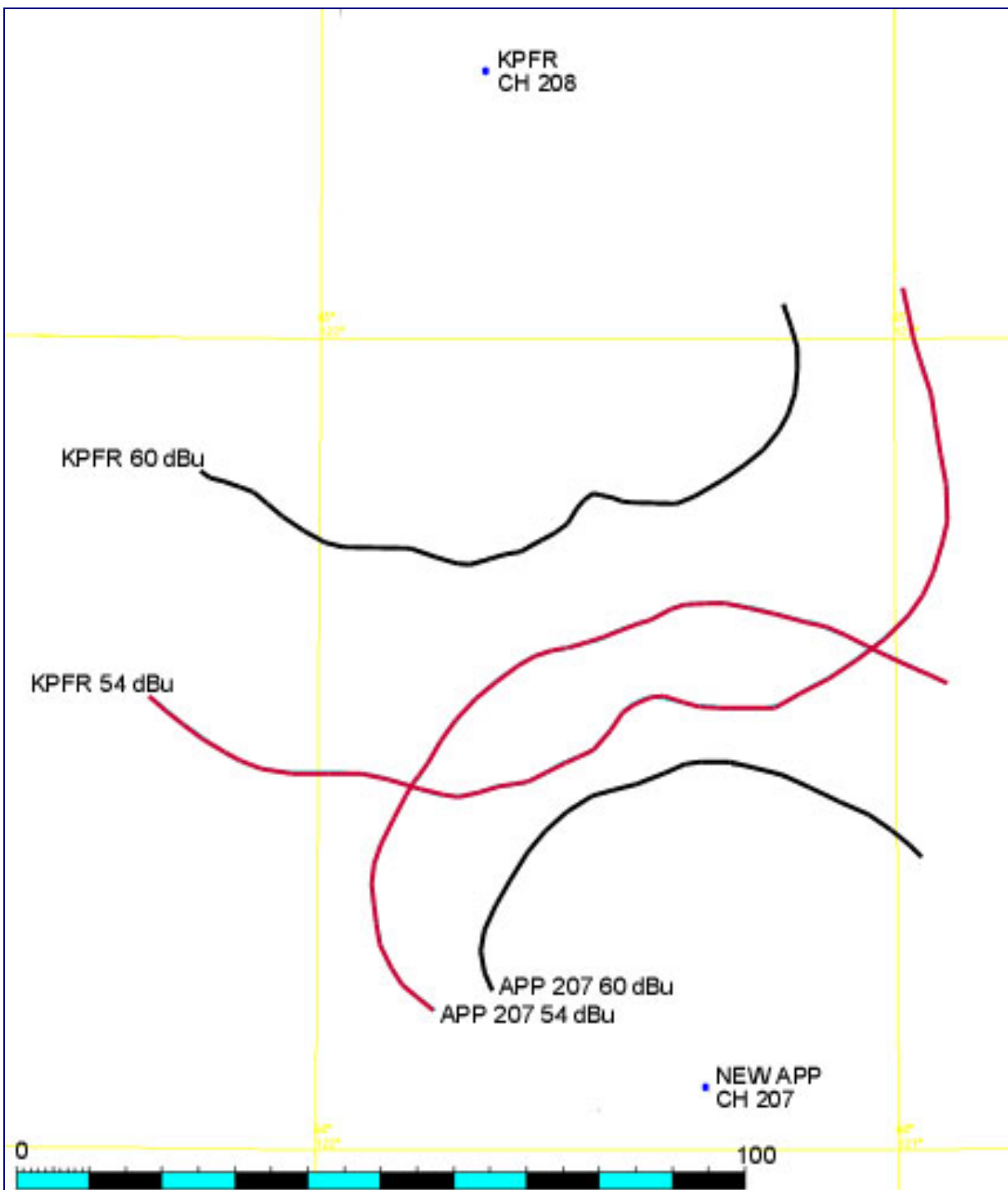
Tabulation of

CH 207, NEW (APP, Redmond) 60 dBu protected contour & CH 208, KPFR (CP Mod) 54 dBu interference contour

AP207 - BPED981203MO Channel= 207 Max ERP = 5 kW RCAMSL = 1304 M N. Lat = 440440 W. Lng = 1211949				KPFR Channel = 208 Max ERP = 7 kW RCAMSL = 1853 M N. Lat = 451958 W. Lng = 1214248				
Protected 60 dBu				Interfering 54 dBu				
Azimuth (degrees)	ERP (kW)	HAAT (m)	Dist (km)	Azimuth (degrees)	ERP (kW)	HAAT (m)	Dist (km)	Actual (dBu)
0.0	5.000	310.9	44.6	162.3	7.000	557.1	99.6	51.6
10.0	5.000	302.2	44.1	158.5	7.000	598.5	103.3	51.4
20.0	5.000	289.6	43.3	155.5	7.000	630.5	108.6	50.5
30.0	5.000	291.3	43.4	153.0	7.000	630.1	114.4	48.9
40.0	5.000	289.8	43.3	151.3	7.000	627.5	121.2	47.0
50.0	5.000	283.7	42.9	150.5	7.000	628.1	128.5	45.0
60.0	5.000	276.6	42.5	150.4	7.000	628.2	135.9	43.0
70.0	5.000	268.8	42.0	150.8	7.000	627.8	143.3	41.1
80.0	5.000	261.6	41.6	151.7	7.000	627.7	150.2	39.3
90.0	5.000	247.5	40.7	153.0	7.000	630.1	156.5	37.8
100.0	5.000	223.7	39.1	154.8	7.000	632.3	161.7	36.5
110.0	5.000	203.3	37.6	156.7	7.000	621.3	165.9	35.4
120.0	5.000	180.3	35.7	158.7	7.000	595.8	168.9	34.3
130.0	5.000	167.0	34.4	160.6	7.000	573.4	171.3	33.5
140.0	5.000	154.9	33.2	162.6	7.000	553.6	172.8	32.9
150.0	5.000	124.6	29.9	164.7	7.000	527.3	171.5	32.8
160.0	5.000	98.7	27.0	166.5	7.000	525.7	169.5	33.2
170.0	5.000	96.4	26.7	168.1	7.000	543.6	169.4	33.5
180.0	5.000	92.0	26.1	169.6	7.000	576.4	168.3	34.2
190.0	5.000	97.0	26.8	171.2	7.000	604.4	167.8	34.7
200.0	5.000	102.3	27.5	172.7	7.000	619.1	166.6	35.2
210.0	5.000	95.8	26.6	174.0	7.000	631.5	163.4	36.1
220.0	5.000	51.9	20.1	173.5	7.000	625.1	155.8	37.9
230.0	5.000	14.8	15.0	172.8	7.000	619.7	150.3	39.2
240.0	5.000	-12.1	15.0	173.3	7.000	623.1	148.0	39.8
250.0	5.000	-19.1	15.0	173.6	7.000	626.2	145.5	40.5
260.0	5.000	-61.8	15.0	173.7	7.000	627.5	142.9	41.2
270.0	5.000	-23.7	15.0	173.7	7.000	627.5	140.3	41.8
280.0	5.000	44.6	18.5	174.9	7.000	643.5	136.8	42.9
290.0	5.000	123.7	29.8	179.0	7.000	676.1	129.3	45.4
300.0	5.000	179.8	35.7	180.3	7.000	689.2	121.6	47.7
310.0	5.000	208.6	38.0	179.4	7.000	680.2	115.0	49.4
320.0	5.000	233.1	39.8	177.5	7.000	672.9	109.1	51.0
330.0	5.000	266.8	41.9	174.8	7.000	642.1	103.6	52.0
340.0	5.000	280.9	42.8	171.0	7.000	601.8	100.5	52.2
350.0	5.000	286.6	43.1	166.8	7.000	527.7	99.7	51.0

Allocation Study

Map of
CH 208, KPFR (CP Mod) & CH 207, NEW (APP, Redmond) 60 dBu protected contours & 54 dBu interference contours



Allocation Study

Tabulation of

CH 208, KPFR (CP Mod) 60 dBu protected contour & CH 208, KTCB (CP) 40 dBu interference contour

KPFR Channel= 208 Max ERP = 7 kW RCAMSL = 1853 M N. Lat = 451958 W. Lng = 1214248				KTCB Channel = 208 Max ERP = .38 kW RCAMSL = 448 M N. Lat = 452759 W. Lng = 1235511				
Protected 60 dBu				Interfering 40 dBu				
Azimuth (degrees)	ERP (kW)	HAAT (m)	Dist (km)	Azimuth (degrees)	ERP (kW)	HAAT (m)	Dist (km)	Actual (dBu)
0.0	1.480	85.5	18.9	88.7	0.380	365.4	172.6	17.2
10.0	1.480	69.8	16.9	89.4	0.380	366.8	175.5	16.6
20.0	1.480	118.6	22.3	88.1	0.380	364.2	180.2	15.7
30.0	1.480	74.0	17.5	89.9	0.380	367.4	181.3	15.5
40.0	1.480	171.6	26.2	88.4	0.380	364.8	189.4	14.0
50.0	1.480	255.3	31.7	88.4	0.380	364.8	196.8	12.6
60.0	1.480	330.0	35.9	89.1	0.380	366.2	203.6	11.4
70.0	1.480	329.6	35.8	90.7	0.380	356.8	206.3	10.7
80.0	1.480	321.0	35.4	92.4	0.380	334.8	207.7	10.0
90.0	1.480	362.3	37.5	94.0	0.380	326.6	210.8	9.3
100.0	1.480	417.2	39.9	95.9	0.380	344.6	213.3	9.2
110.0	1.480	368.8	37.8	97.6	0.380	358.9	210.3	10.0
120.0	2.345	427.4	44.2	99.9	0.380	374.5	214.6	9.5
130.0	3.715	540.3	54.8	103.1	0.380	391.5	221.0	8.7
140.0	5.885	638.4	63.5	106.5	0.380	385.8	223.5	8.2
150.0	7.000	628.9	65.0	109.0	0.380	371.4	218.0	8.9
160.0	7.000	579.6	63.1	110.8	0.380	366.0	208.7	10.4
170.0	7.000	584.9	63.3	112.7	0.380	370.1	200.1	12.1
180.0	7.000	686.2	67.1	115.2	0.380	372.9	192.0	13.6
190.0	7.000	672.3	66.6	116.4	0.380	374.9	180.9	15.8
200.0	7.000	722.0	68.3	117.7	0.380	378.1	169.8	17.9
210.0	7.000	661.7	66.2	117.2	0.380	376.9	157.9	20.2
220.0	7.000	685.7	67.0	116.9	0.380	376.2	146.2	22.4
230.0	7.000	647.2	65.6	114.9	0.380	372.7	135.7	24.6
240.0	7.000	672.2	66.6	112.6	0.380	369.9	125.2	27.1
250.0	7.000	882.2	73.1	110.9	0.380	366.1	111.8	30.4
260.0	5.885	924.9	72.2	105.0	0.380	393.0	105.5	32.9
270.0	3.715	748.7	62.5	97.7	0.380	359.5	111.3	30.3
280.0	2.345	599.4	52.9	92.7	0.380	330.9	120.7	26.8
290.0	1.480	834.2	55.9	88.0	0.380	364.0	120.1	28.2
300.0	0.935	822.5	51.2	85.2	0.380	358.6	128.6	25.9
310.0	0.590	720.6	43.7	84.5	0.380	359.2	139.5	23.3
320.0	0.590	638.1	41.0	83.5	0.380	359.8	146.9	21.8
330.0	0.935	542.7	41.7	82.0	0.380	356.6	152.9	20.6
340.0	1.480	582.7	47.7	79.1	0.380	330.3	158.7	18.8
350.0	1.480	280.9	33.2	83.9	0.380	359.6	167.5	18.0

Allocation Study

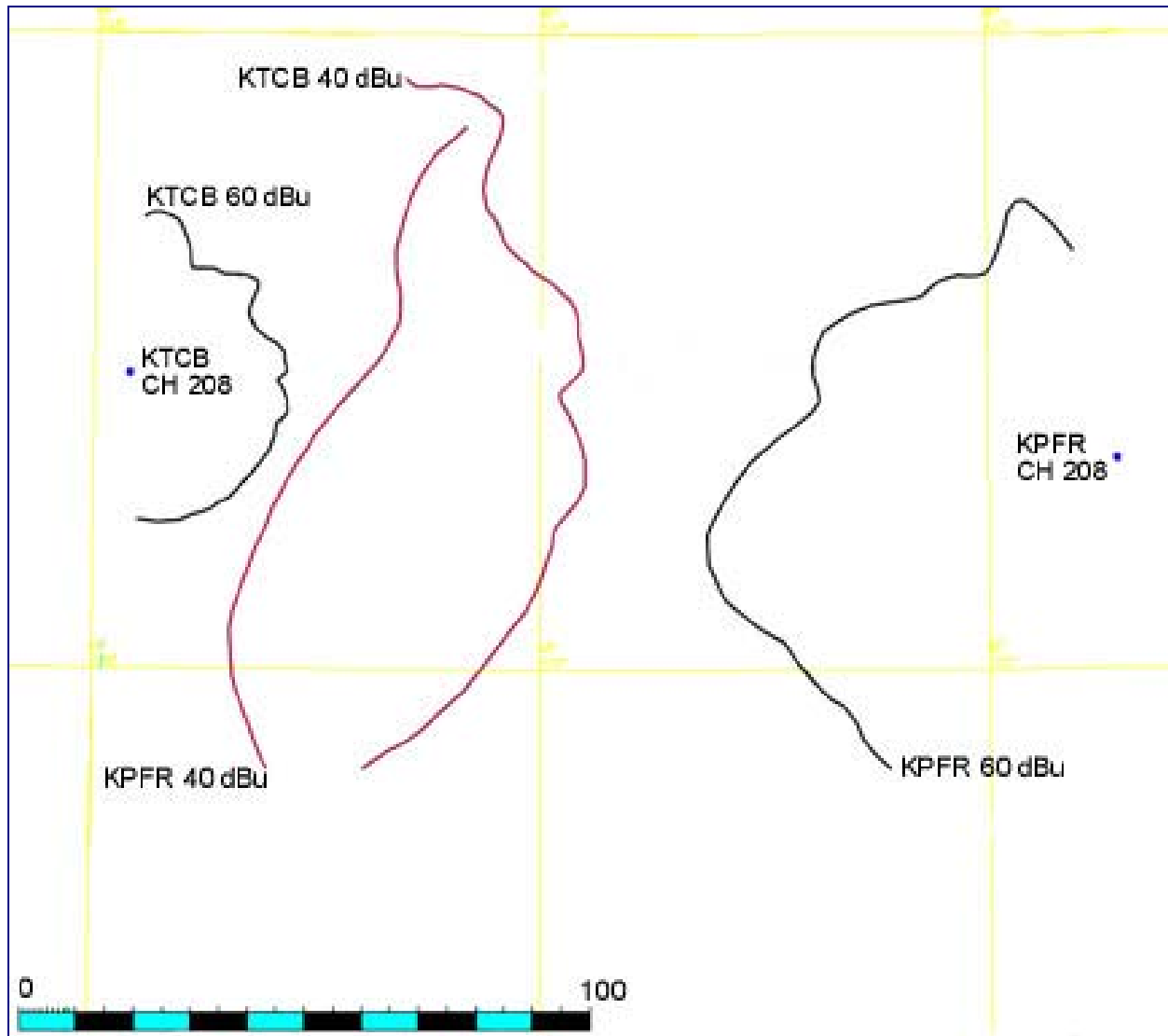
Tabulation of

CH 208, KTCB (CP) 60 dBu protected contour & CH 208, KPFR (CP Mod) 40 dBu interference contour

KTCB Channel = 208 Max ERP = .38 kW RCAMSL = 448 M N. Lat = 452759 W. Lng = 1235511				KPFR Channel = 208 Max ERP = 7 kW RCAMSL = 1853 M N. Lat = 451958 W. Lng = 1214248				
Protected 60 dBu				Interfering 40 dBu				
Azimuth (degrees)	ERP (kW)	HAAT (m)	Dist (km)	Azimuth (degrees)	ERP (kW)	HAAT (m)	Dist (km)	Actual (dBu)
0.0	0.380	348.7	26.8	283.6	2.011	683.9	177.4	27.9
10.0	0.380	396.0	28.5	284.4	1.940	709.0	172.8	29.1
20.0	0.380	352.1	26.9	283.8	1.993	690.6	168.1	30.2
30.0	0.380	221.8	21.6	281.7	2.184	625.2	165.1	30.5
40.0	0.380	259.7	23.3	281.7	2.184	625.2	160.9	31.6
50.0	0.380	332.9	26.2	281.7	2.184	625.2	155.7	32.9
60.0	0.380	297.9	24.8	280.2	2.326	599.9	153.5	33.4
70.0	0.380	260.1	23.3	278.6	2.518	599.3	152.5	34.0
80.0	0.380	339.2	26.4	277.6	2.645	599.3	147.9	35.3
90.0	0.380	366.1	27.5	275.8	2.882	625.8	146.1	36.5
100.0	0.380	375.1	27.8	273.9	3.143	666.7	145.8	37.4
110.0	0.380	367.3	27.5	272.1	3.401	706.5	147.1	37.9
120.0	0.380	381.7	28.0	270.3	3.669	743.2	148.7	38.3
130.0	0.380	375.5	27.8	268.9	3.929	768.5	151.7	38.1
140.0	0.380	379.1	27.9	267.6	4.190	791.7	155.2	37.7
150.0	0.380	374.8	27.8	266.7	4.376	807.5	159.5	37.0
160.0	0.380	362.1	27.3	266.2	4.481	814.9	164.1	36.1
170.0	0.380	345.8	26.7	266.1	4.502	816.1	168.9	34.9
180.0	0.380	314.9	25.5	266.5	4.418	810.7	173.4	33.7
190.0	0.380	315.6	25.5	266.7	4.376	807.5	177.8	32.7
200.0	0.380	429.1	29.6	266.0	4.523	817.3	183.7	31.7
210.0	0.380	443.6	30.1	266.6	4.397	809.2	188.5	30.6
220.0	0.380	444.4	30.1	267.6	4.190	791.7	192.6	29.5
230.0	0.380	444.4	30.1	268.7	3.969	772.1	196.1	28.4
240.0	0.380	443.5	30.1	269.9	3.734	750.5	199.0	27.3
250.0	0.380	442.4	30.0	271.3	3.519	723.3	201.2	26.3
260.0	0.380	440.3	30.0	272.7	3.314	693.8	202.6	25.4
270.0	0.380	436.3	29.8	274.2	3.101	657.5	203.1	24.6
280.0	0.380	438.2	29.9	275.7	2.896	627.4	203.1	23.9
290.0	0.380	436.6	29.8	277.1	2.710	605.1	202.2	23.6
300.0	0.380	428.9	29.6	278.5	2.530	599.1	200.4	23.5
310.0	0.380	431.5	29.6	279.9	2.357	599.3	198.1	23.6
320.0	0.380	435.9	29.8	281.1	2.240	611.1	195.3	24.1
330.0	0.380	439.1	29.9	282.3	2.129	641.1	191.7	24.9
340.0	0.380	443.0	30.0	283.3	2.038	673.5	187.7	25.9
350.0	0.380	442.2	30.0	284.0	1.975	697.0	183.0	26.9

Allocation Study

Map of
CH 208, KPFR (CP Mod) & CH 208, KTCB (CP) 60 dBu protected contours & 40 dBu interference contours



Allocation Study

Tabulation of

CH 208, KPFR (CP Mod) 60 dBu protected contour & CH 208, KJVH (LIC) 40 dBu interference contour

KPFR Channel= 208 Max ERP = 7 kW RCAMSL = 1853 M N. Lat = 451958 W. Lng = 1214248				KJVH - BLED870630KA Channel = 208 Max ERP = .1 kW RCAMSL = 427 M N. Lat = 460952 W. Lng = 1225113				
Protected 60 dBu				Interfering 40 dBu				
Azimuth (degrees)	ERP (kW)	HAAT (m)	Dist (km)	Azimuth (degrees)	ERP (kW)	HAAT (m)	Dist (km)	Actual (dBu)
0.0	1.480	85.5	18.9	129.7	0.100	205.9	115.1	18.9
10.0	1.480	69.8	16.9	129.6	0.100	205.4	118.8	18.1
20.0	1.480	118.6	22.3	126.6	0.100	179.7	119.9	17.3
30.0	1.480	74.0	17.5	128.4	0.100	196.7	124.3	16.8
40.0	1.480	171.6	26.2	124.5	0.100	162.8	127.9	15.3
50.0	1.480	255.3	31.7	122.6	0.100	158.8	133.9	14.0
60.0	1.480	330.0	35.9	121.9	0.100	159.7	141.0	12.6
70.0	1.480	329.6	35.8	123.2	0.100	158.8	146.3	11.6
80.0	1.480	321.0	35.4	124.9	0.100	165.2	150.7	11.1
90.0	1.480	362.3	37.5	126.2	0.100	175.8	156.5	10.4
100.0	1.480	417.2	39.9	127.8	0.100	191.3	162.1	9.8
110.0	1.480	368.8	37.8	130.3	0.100	207.5	163.0	9.9
120.0	2.345	427.4	44.2	132.0	0.100	199.4	171.2	8.3
130.0	3.715	540.3	54.8	134.3	0.100	165.0	182.9	5.4
140.0	5.885	638.4	63.5	137.4	0.100	130.2	191.8	2.9
150.0	7.000	628.9	65.0	140.7	0.100	135.1	192.1	2.9
160.0	7.000	579.6	63.1	143.9	0.100	187.5	187.8	5.0
170.0	7.000	584.9	63.3	147.1	0.100	221.2	184.3	6.4
180.0	7.000	686.2	67.1	150.8	0.100	240.6	182.7	7.1
190.0	7.000	672.3	66.6	153.8	0.100	257.0	176.0	8.6
200.0	7.000	722.0	68.3	157.2	0.100	254.7	169.9	9.6
210.0	7.000	661.7	66.2	159.5	0.100	251.3	159.9	11.3
220.0	7.000	685.7	67.0	162.3	0.100	252.8	151.0	12.9
230.0	7.000	647.2	65.6	163.9	0.100	251.0	140.1	14.9
240.0	7.000	672.2	66.6	166.0	0.100	257.1	129.6	17.1
250.0	7.000	882.2	73.1	170.2	0.100	267.3	119.2	19.5
260.0	5.885	924.9	72.2	170.4	0.100	269.1	106.5	22.7
270.0	3.715	748.7	62.5	164.1	0.100	251.2	96.1	25.3
280.0	2.345	599.4	52.9	156.3	0.100	254.2	91.0	27.0
290.0	1.480	834.2	55.9	153.8	0.100	257.0	81.7	30.0
300.0	0.935	822.5	51.2	146.5	0.100	216.2	80.2	29.1
310.0	0.590	720.6	43.7	139.4	0.100	122.4	84.7	23.8
320.0	0.590	638.1	41.0	134.5	0.100	161.9	87.1	24.8
330.0	0.935	542.7	41.7	129.8	0.100	206.3	88.0	26.2
340.0	1.480	582.7	47.7	123.4	0.100	159.1	86.4	24.9
350.0	1.480	280.9	33.2	125.8	0.100	172.1	102.1	20.9

Allocation Study

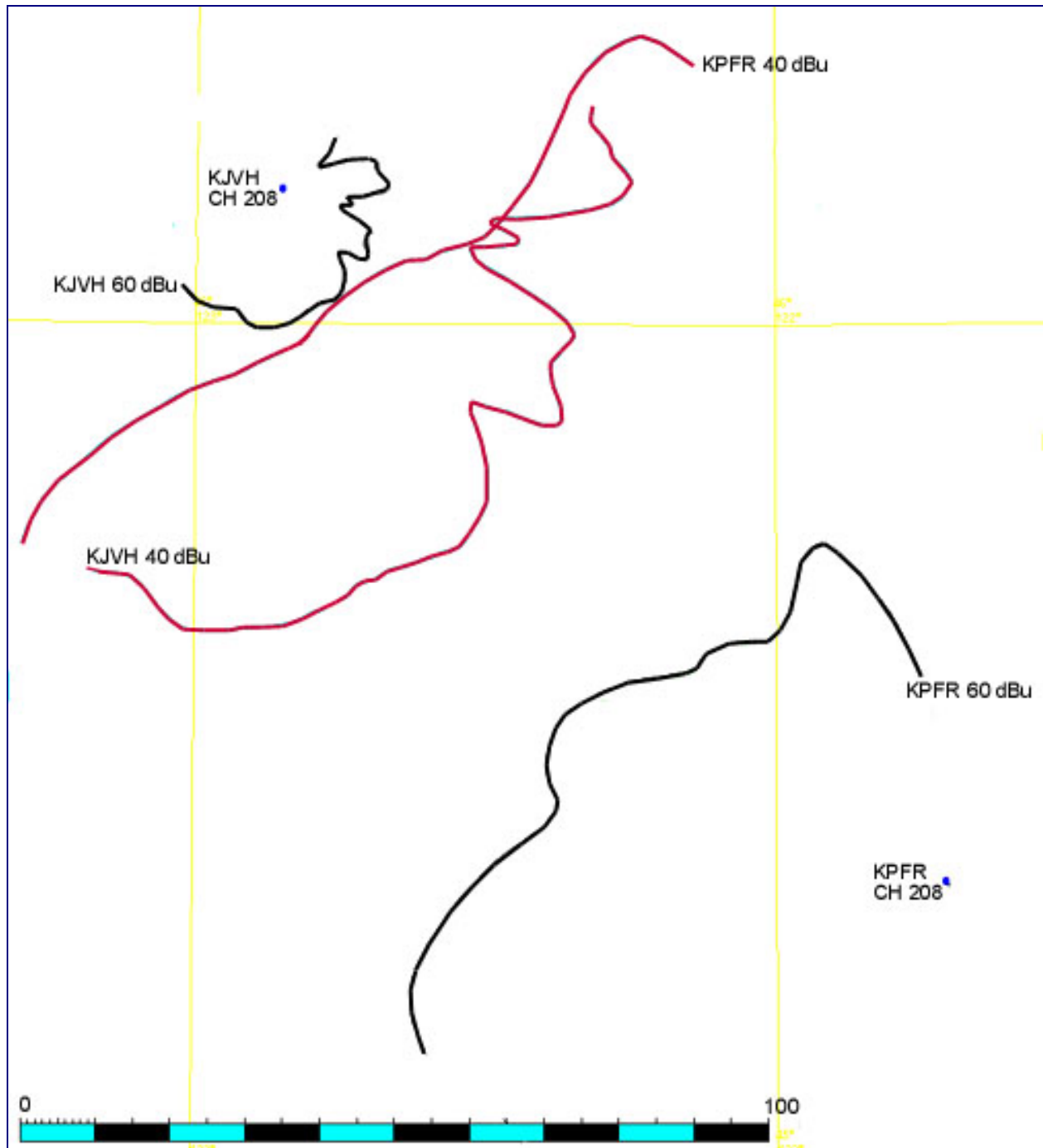
Tabulation of

CH 208, KJVH (LIC) 60 dBu protected contour & CH 208, KPFR (CP Mod) 40 dBu interference contour

KJVH - BLED870630KA Channel= 208 Max ERP = .1 kW RCAMSL = 427 M N. Lat = 460952 W. Lng = 1225113				KPFR Channel = 208 Max ERP = 7 kW RCAMSL = 1853 M N. Lat = 451958 W. Lng = 1214248				
Protected 60 dBu				Interfering 40 dBu				
Azimuth (degrees)	ERP (kW)	HAAT (m)	Dist (km)	Azimuth (degrees)	ERP (kW)	HAAT (m)	Dist (km)	Actual (dBu)
0.0	0.100	211.8	14.9	320.5	0.605	624.5	139.2	31.4
10.0	0.100	216.2	15.1	321.3	0.630	603.0	137.5	31.8
20.0	0.100	212.6	15.0	321.9	0.649	587.9	135.3	32.3
30.0	0.100	163.0	13.2	321.7	0.643	592.8	132.4	33.1
40.0	0.100	108.8	10.7	320.9	0.618	613.6	129.7	33.9
50.0	0.100	71.0	8.7	320.1	0.593	635.4	127.8	34.5
60.0	0.100	17.6	5.6	318.7	0.590	669.8	126.9	35.2
70.0	0.100	113.5	11.0	320.8	0.615	616.3	124.1	35.5
80.0	0.100	157.5	12.9	321.2	0.627	605.6	121.4	36.2
90.0	0.100	186.8	14.1	321.1	0.624	608.3	118.8	36.9
100.0	0.100	69.6	8.6	318.6	0.590	671.8	121.3	36.8
110.0	0.100	63.0	8.2	317.9	0.590	684.1	120.8	37.1
120.0	0.100	160.0	13.0	318.0	0.590	682.6	115.7	38.5
130.0	0.100	206.9	14.8	316.9	0.590	696.2	113.5	39.3
140.0	0.100	126.5	11.5	315.8	0.590	705.7	116.7	38.5
150.0	0.100	236.4	15.8	314.2	0.590	719.1	112.9	39.7
160.0	0.100	251.5	16.4	312.8	0.590	727.2	113.4	39.7
170.0	0.100	265.8	16.9	311.4	0.590	725.8	114.6	39.4
180.0	0.100	313.8	18.4	309.8	0.596	720.4	115.6	39.0
190.0	0.100	332.4	19.0	308.7	0.630	723.0	118.0	38.7
200.0	0.100	288.2	17.6	308.6	0.634	723.5	121.5	37.7
210.0	0.100	321.1	18.6	307.8	0.659	727.8	124.3	37.2
220.0	0.100	334.8	19.0	307.6	0.666	728.8	127.6	36.3
230.0	0.100	333.7	19.0	307.8	0.659	727.8	130.9	35.4
240.0	0.100	347.2	19.4	308.1	0.649	726.2	134.1	34.4
250.0	0.100	354.5	19.5	308.7	0.630	723.0	137.2	33.4
260.0	0.100	361.3	19.7	309.5	0.605	720.5	140.1	32.4
270.0	0.100	362.6	19.7	310.4	0.590	721.6	142.5	31.7
280.0	0.100	336.1	19.1	311.7	0.590	726.9	143.9	31.4
290.0	0.100	287.3	17.6	313.1	0.590	726.1	144.1	31.3
300.0	0.100	283.9	17.5	314.3	0.590	718.3	145.0	31.0
310.0	0.100	325.7	18.8	315.4	0.590	709.1	146.8	30.4
320.0	0.100	346.0	19.3	316.7	0.590	698.1	147.4	30.2
330.0	0.100	356.8	19.6	318.0	0.590	682.6	147.2	30.0
340.0	0.100	355.8	19.6	319.3	0.590	656.2	146.2	30.0
350.0	0.100	299.9	18.0	320.2	0.596	632.7	143.4	30.4

Allocation Study

Map of
CH 208, KPFR (CP Mod) & CH 208, KJVH (LIC) 60 dBu protected contours & 40 dBu interference contours



Allocation Study

Tabulation of

CH 208, KPFR (CP Mod) 60 dBu protected contour & CH 209, KLCC (LIC) 54 dBu interference contour

KPFR Channel= 208 Max ERP = 7 kW RCAMSL = 1853 M N. Lat = 451958 W. Lng = 1214248				KLCC - BLED900313KB Channel = 209 Max ERP = 81 kW RCAMSL = 546 M N. Lat = 440005 W. Lng = 1230648				
Protected 60 dBu				Interfering 54 dBu				
Azimuth (degrees)	ERP (kW)	HAAT (m)	Dist (km)	Azimuth (degrees)	ERP (kW)	HAAT (m)	Dist (km)	Actual (dBu)
0.0	1.480	85.5	18.9	33.6	81.000	347.8	200.3	34.9
10.0	1.480	69.8	16.9	34.7	81.000	340.8	200.2	34.8
20.0	1.480	118.6	22.3	35.0	81.000	339.1	206.3	33.6
30.0	1.480	74.0	17.5	36.3	81.000	335.6	202.3	34.3
40.0	1.480	171.6	26.2	37.2	81.000	336.0	211.0	32.7
50.0	1.480	255.3	31.7	38.8	81.000	338.9	215.8	32.0
60.0	1.480	330.0	35.9	40.6	81.000	343.9	218.3	31.6
70.0	1.480	329.6	35.8	42.1	81.000	347.7	215.8	32.1
80.0	1.480	321.0	35.4	43.4	81.000	349.9	212.2	32.8
90.0	1.480	362.3	37.5	45.1	81.000	353.6	209.7	33.3
100.0	1.480	417.2	39.9	46.8	81.000	361.1	206.2	34.1
110.0	1.480	368.8	37.8	47.4	81.000	364.1	199.4	35.4
120.0	2.345	427.4	44.2	49.9	81.000	373.5	195.4	36.3
130.0	3.715	540.3	54.8	53.7	81.000	376.9	190.3	37.3
140.0	5.885	638.4	63.5	56.9	81.000	371.9	181.8	38.8
150.0	7.000	628.9	65.0	57.5	81.000	370.0	170.7	40.9
160.0	7.000	579.6	63.1	56.3	81.000	373.8	159.9	43.0
170.0	7.000	584.9	63.3	55.1	81.000	376.4	149.5	45.1
180.0	7.000	686.2	67.1	54.1	81.000	377.0	137.8	47.5
190.0	7.000	672.3	66.6	50.5	81.000	374.8	129.6	49.5
200.0	7.000	722.0	68.3	46.5	81.000	359.5	121.6	50.9
210.0	7.000	661.7	66.2	40.9	81.000	344.8	119.9	50.8
220.0	7.000	685.7	67.0	35.3	81.000	337.7	118.3	50.9
230.0	7.000	647.2	65.6	30.0	81.000	371.0	122.2	51.2
240.0	7.000	672.2	66.6	25.1	81.000	390.9	126.6	50.7
250.0	7.000	882.2	73.1	19.1	81.000	404.0	130.1	50.2
260.0	5.885	924.9	72.2	16.5	81.000	406.5	141.2	47.5
270.0	3.715	748.7	62.5	18.2	81.000	404.8	155.7	44.5
280.0	2.345	599.4	52.9	20.6	81.000	402.8	167.8	42.1
290.0	1.480	834.2	55.9	19.3	81.000	403.8	177.0	40.3
300.0	0.935	822.5	51.2	21.0	81.000	402.4	185.9	38.6
310.0	0.590	720.6	43.7	23.7	81.000	396.2	192.3	37.3
320.0	0.590	638.1	41.0	25.2	81.000	390.4	198.2	36.1
330.0	0.935	542.7	41.7	26.0	81.000	386.2	204.8	34.8
340.0	1.480	582.7	47.7	26.1	81.000	385.7	214.6	33.0
350.0	1.480	280.9	33.2	30.2	81.000	369.8	208.9	33.7

Allocation Study

Tabulation of

CH 209, KLCC (LIC) 60 dBu protected contour & CH 208, KPFR (CP Mod) 54 dBu interference contour

KLCC - BLED900313KB Channel= 209 Max ERP = 81 kW RCAMSL = 546 M N. Lat = 440005 W. Lng = 1230648				KPFR Channel = 208 Max ERP = 7 kW RCAMSL = 1853 M N. Lat = 451958 W. Lng = 1214248				
Protected 60 dBu				Interfering 54 dBu				
Azimuth (degrees)	ERP (kW)	HAAT (m)	Dist (km)	Azimuth (degrees)	ERP (kW)	HAAT (m)	Dist (km)	Actual (dBu)
0.0	81.000	415.4	78.7	237.9	7.000	673.6	130.3	45.1
10.0	81.000	408.6	78.2	233.8	7.000	657.4	120.0	47.7
20.0	81.000	403.3	77.8	228.2	7.000	632.2	112.3	49.5
30.0	81.000	371.0	75.5	221.4	7.000	678.1	110.1	50.8
40.0	81.000	342.2	73.4	214.6	7.000	700.3	111.5	50.6
50.0	81.000	373.8	75.7	207.9	7.000	663.9	112.4	49.9
60.0	81.000	365.9	75.1	202.4	7.000	704.4	119.5	48.5
70.0	81.000	360.6	74.7	198.3	7.000	724.8	128.9	46.1
80.0	81.000	361.3	74.8	195.4	7.000	709.5	140.0	42.9
90.0	81.000	334.6	72.8	194.5	7.000	701.0	152.8	39.6
100.0	81.000	355.5	74.3	193.2	7.000	689.6	165.3	36.3
110.0	81.000	332.9	72.7	193.9	7.000	695.2	178.1	33.3
120.0	81.000	344.9	73.6	194.4	7.000	700.0	190.8	31.0
130.0	81.000	344.4	73.5	195.8	7.000	712.6	202.8	28.8
140.0	81.000	337.9	73.1	197.6	7.000	722.4	213.9	27.0
150.0	81.000	339.3	73.2	199.5	7.000	724.1	224.2	25.4
160.0	81.000	307.7	70.8	202.2	7.000	706.0	231.6	23.9
170.0	81.000	251.4	66.3	205.1	7.000	684.9	235.5	22.9
180.0	81.000	226.2	64.2	207.7	7.000	665.2	239.7	21.9
190.0	81.000	229.8	64.5	210.1	7.000	662.0	244.5	21.1
200.0	81.000	235.9	65.0	212.6	7.000	682.3	248.2	20.7
210.0	81.000	258.8	66.9	215.2	7.000	701.3	251.8	20.5
220.0	81.000	285.4	69.1	217.8	7.000	693.3	254.3	20.0
230.0	81.000	332.0	72.6	220.6	7.000	683.7	256.5	19.6
240.0	81.000	331.3	72.6	223.4	7.000	650.1	253.5	19.6
250.0	81.000	349.1	73.9	226.2	7.000	626.3	250.2	19.8
260.0	81.000	350.5	74.0	228.8	7.000	636.8	244.3	20.8
270.0	81.000	378.6	76.0	231.6	7.000	655.3	238.4	22.0
280.0	81.000	366.9	75.2	233.9	7.000	657.5	228.9	23.8
290.0	81.000	375.7	75.8	236.2	7.000	666.4	219.1	25.5
300.0	81.000	388.2	76.7	238.2	7.000	673.4	208.2	27.4
310.0	81.000	404.9	77.9	240.1	7.000	672.6	196.4	29.6
320.0	81.000	412.1	78.5	241.4	7.000	687.0	183.3	32.2
330.0	81.000	413.4	78.6	241.9	7.000	697.6	169.7	35.3
340.0	81.000	417.7	78.9	241.7	7.000	693.1	155.9	38.7
350.0	81.000	419.8	79.1	240.5	7.000	675.0	142.5	41.9

Allocation Study

Map of
CH 208, KPFR (CP Mod) & CH 209, KLCC (LIC) 60 dBu protected contours & 54 dBu interference contours

