

Exhibit 13 A - K242CR.A Protection of KCEL 241A Mojave, CA



47 C.F.R. 74.1204 Compliance

There is no prohibited overlap of the interfering contour to the protected contour, as shown.

KCEL

Mojave, CA
BMLH20101130API
Channel: 241A
Latitude: 35-05-38 N
Longitude: 118-16-00 W
ERP: 0.63 kW
HAAT 251.0 m
Frequency: 96.1 MHz
AMSL Height: 1466.0 m
Elevation: 1427.0 m
Horiz. Pattern: Omni
Study Date: 6/16/2016

K242CR.A

Lancaster, CA
Proposed
Channel: 242D
Latitude: 34-32-50 N
Longitude: 118-12-57 W
ERP: 0.01 kW
HAAT 627.93 m
Frequency: 96.3 MHz
AMSL Height: 1593.0 m
Elevation: 1585.0 m
Horiz. Pattern: Directional
Study Date: 6/16/2016

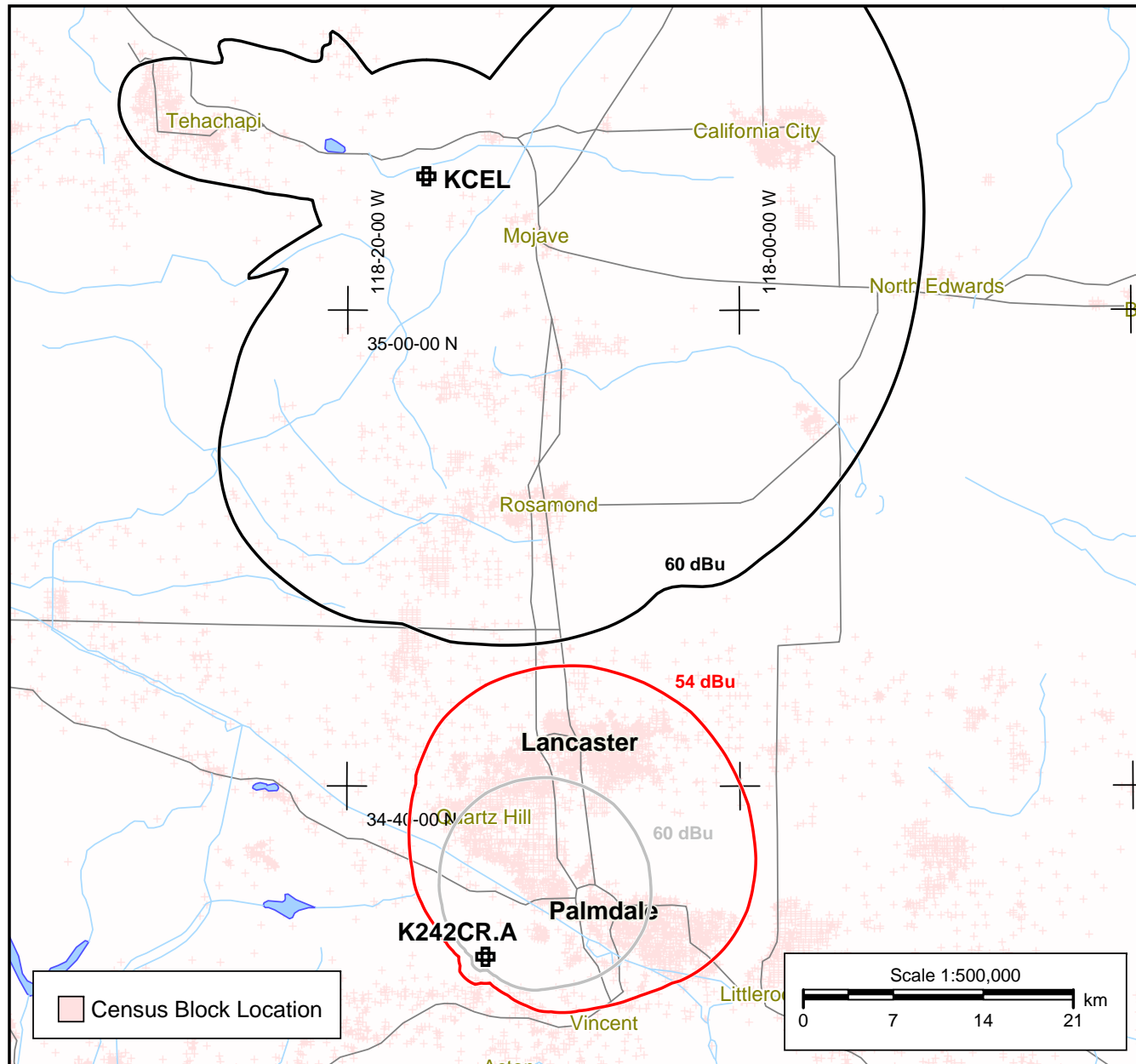


Exhibit 13 B - K242CR.A Protection of KXOL 242B Los Angeles



47 C.F.R. 74.1204 Compliance

There is no prohibited overlap of the interfering contour to the protected contour, as shown.

KXOL-FM

Los Angeles, CA
BLH20060926AHF
Channel: 242B
Latitude: 34-11-48 N
Longitude: 118-15-30 W
ERP: 6.60 kW
HAAT 398.0 m
Frequency: 96.3 MHz
AMSL Height: 848.0 m
Elevation: 808.0 m
Horiz. Pattern: Directional
Study Date: 6/16/2016

K242CR.A

Lancaster, CA
Proposed
Channel: 242D
Latitude: 34-32-50 N
Longitude: 118-12-57 W
ERP: 0.01 kW
HAAT 627.93 m
Frequency: 96.3 MHz
AMSL Height: 1593.0 m
Elevation: 1585.0 m
Horiz. Pattern: Directional
Study Date: 6/16/2016

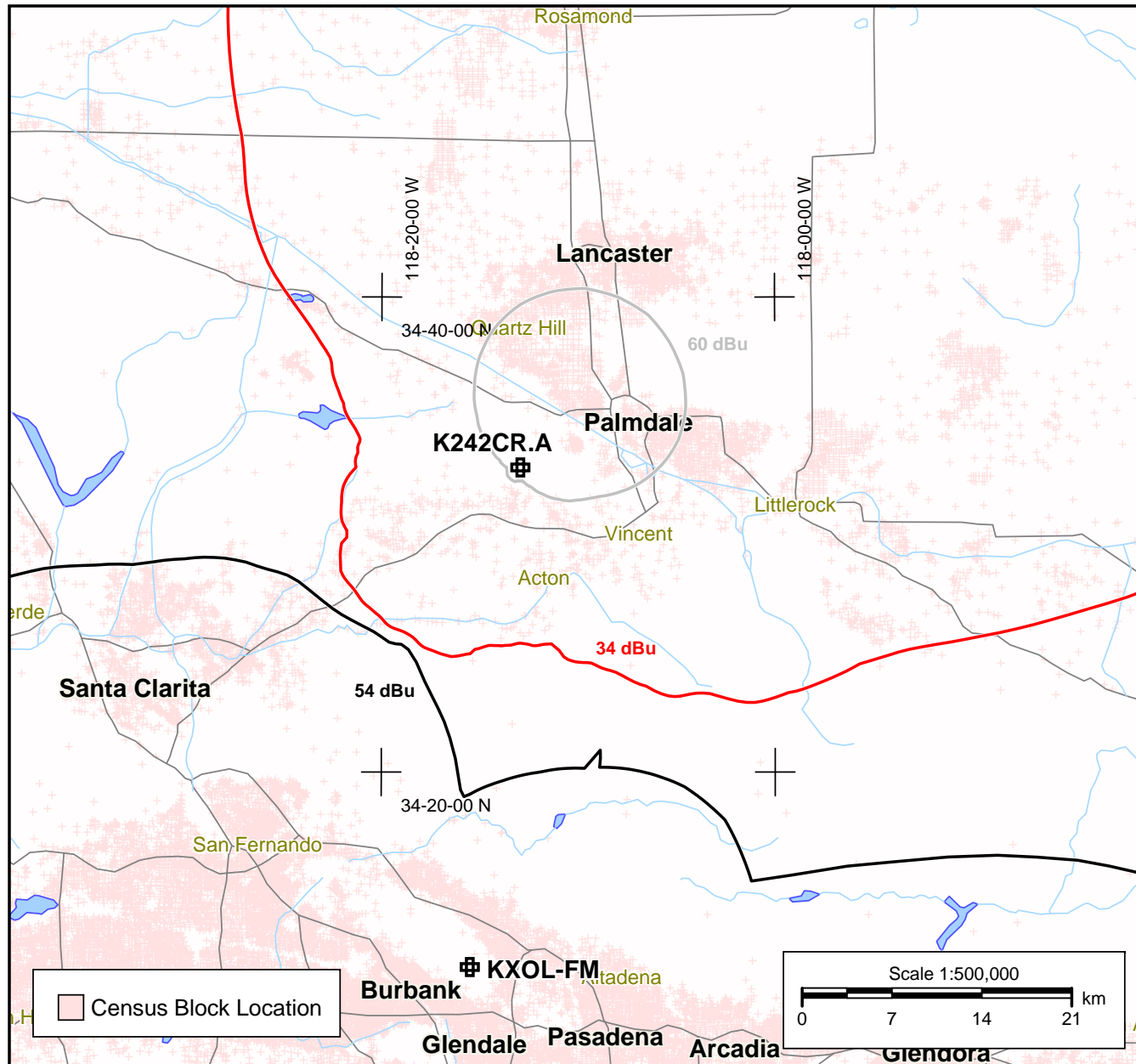
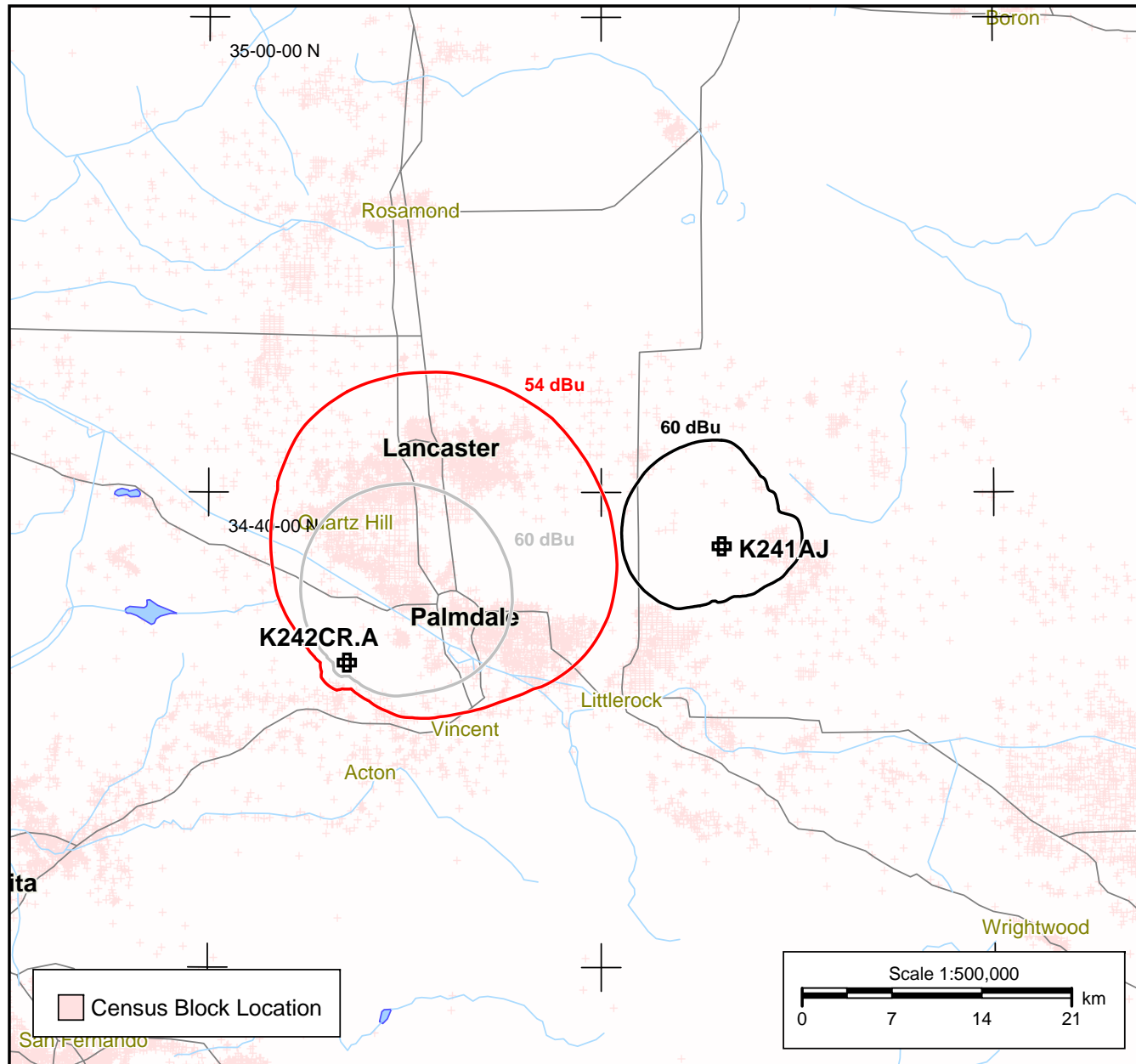


Exhibit 13 C - K242CR.A Protection of K241AJ 241D Palmdale



47 C.F.R. 74.1204 Compliance

There is no prohibited overlap of the interfering contour to the protected contour, as shown.



K241AJ

Palmdale, CA
BLFT19991130ABO
Channel: 241D
Latitude: 34-37-44 N
Longitude: 117-53-52 W
ERP: 0.01 kW
HAAT 127.0 m
Frequency: 96.1 MHz
AMSL Height: 945.0 m
Elevation: 921.0 m
Horiz. Pattern: Omni
Study Date: 6/16/2016

K242CR.A

Lancaster, CA
Proposed
Channel: 242D
Latitude: 34-32-50 N
Longitude: 118-12-57 W
ERP: 0.01 kW
HAAT 627.93 m
Frequency: 96.3 MHz
AMSL Height: 1593.0 m
Elevation: 1585.0 m
Horiz. Pattern: Directional
Study Date: 6/16/2016