

TECHNICAL EXHIBIT
APPLICATION FOR CONSTRUCTION PERMIT
NEW FM STATION (FACILITY ID 171017)
MADISON, MISSOURI

APRIL 29, 2007

CH 247C3 25 KW 100 M

TECHNICAL EXHIBIT
APPLICATION FOR CONSTRUCTION PERMIT
NEW FM STATION (FACILITY ID 171017)
MADISON, MISSOURI
CH 247C3 25 KW 100 M

Table of Contents

Technical Narrative

Figure 1	Proposed Antenna and Supporting Structure
Figure 2	Predicted FCC Coverage Contours
Figure 3	Allocation Study

TECHNICAL EXHIBIT
APPLICATION FOR CONSTRUCTION PERMIT
NEW FM STATION (FACILITY ID 171017)
MADISON, MISSOURI
CH 247C3 25 KW 100 M

Technical Narrative

This Technical Exhibit of which this narrative is part was prepared in support of an application for a new FM station at Madison, Missouri (MM-FM555-C3) in FCC Auction 70. The FCC requires that a 301 “long-form” application be filed by May 2, 2007, specifying the new facility.

Proposed Facilities

The proposed NAD27 site coordinates are 39-28-52 N, 92-10-13. It is proposed to operate with a non-directional ERP of 25 kW and antenna HAAT of 100 meters. A sketch of the proposed structure is shown in Figure 1. The antenna structure registration number (ASRN) is 1004628.

Interference Concerns

The 115 dBu predicted "blanketing" contour of the proposed station would extend radially 2 kilometers from the transmitting site. No interference is expected. However, the applicant recognizes its responsibility to resolve complaints of interference, including blanketing and receiver-induced interference as required by Sections 73.315(b), 73.316(e) and 73.318.

Proposed Coverage Analysis

Figure 2 is a map showing the predicted FCC coverage contours for the proposed operation. The FCC predicted 70 dBu coverage contour will encompass the entire Madison city limits as derived from 2000 U.S. Census data.

The overall average HAAT (100 meters, rounded to the nearest meter) was determined using the N.G.D.C. 30-second terrain database and 8 evenly spaced radials (every 45 degrees of azimuth).

Allocation Study

Channel 247C3 at the proposed site will satisfy the Commission's minimum separation distance requirements, specified in Section 73.207(b) of the Rules, to all assignments, except to station KCXM (see Figure 3).

Station KCXM is licensed for operation on channel 247C1 at Lee's Summit, Missouri (BLH-20030130AAH). Station KCXM operates pursuant to the "short-spacing" provisions of FCC Rule section 73.215. KCXM requested this processing with respect to the then vacant allotment for channel 247C3 at Madison, Missouri in its application for construction permit. Since KCXM initially created this short-spacing with its application for construction permit, the proposed Madison, Channel 247C3 facility is able to freely construct and operate with full Class C3 facilities with respect to KCXM, provided it does not reduce the current separation distance between the Madison vacant allotment site and the licensed KCXM site. This distance is calculated to be 200.75 kilometers. The proposed site herein is located 203.24 kilometers, or 2.49 kilometers further away from KCXM. Thus, the Madison proposal is able to operate with maximum Class C3 facilities and shall remain a non-short-spaced (73.215) facility.

Radiofrequency Electromagnetic Field Exposure

The proposed FM facility was evaluated in terms of potential radio frequency (RF) energy exposure at ground level to workers and the general public. Based on the FCC's

FM Model program using a 6-bay (or higher gain) "rototiller" antenna, the calculated power density at a point 2 meters above ground level will not exceed 0.0182 mW/cm^2 , which is less than 9% of the FCC's recommended limit of 0.2 mW/cm^2 for FM channels, applicable to general population/uncontrolled exposure areas. There are no other known broadcast operations in the area.

Access to the transmitting site will be restricted and appropriately marked with warning signs. In the event that workers or other authorized personnel enter restricted areas or climb the tower, appropriate measures will be taken to assure worker safety with respect to radio frequency radiation exposure. Such measures include reducing the average exposure by spreading out the work over a longer period of time, wearing "accepted" RFR protective clothing and/or RFR exposure monitors or scheduling work when the station is at reduced power or shut down. The proposed operation appears to be otherwise categorically excluded from environmental processing.

It is noted that this statement only addresses the potential for radiofrequency electromagnetic field exposure. All other aspects of the environmental processing analysis will be or already have been provided to the FCC by the tower owner.



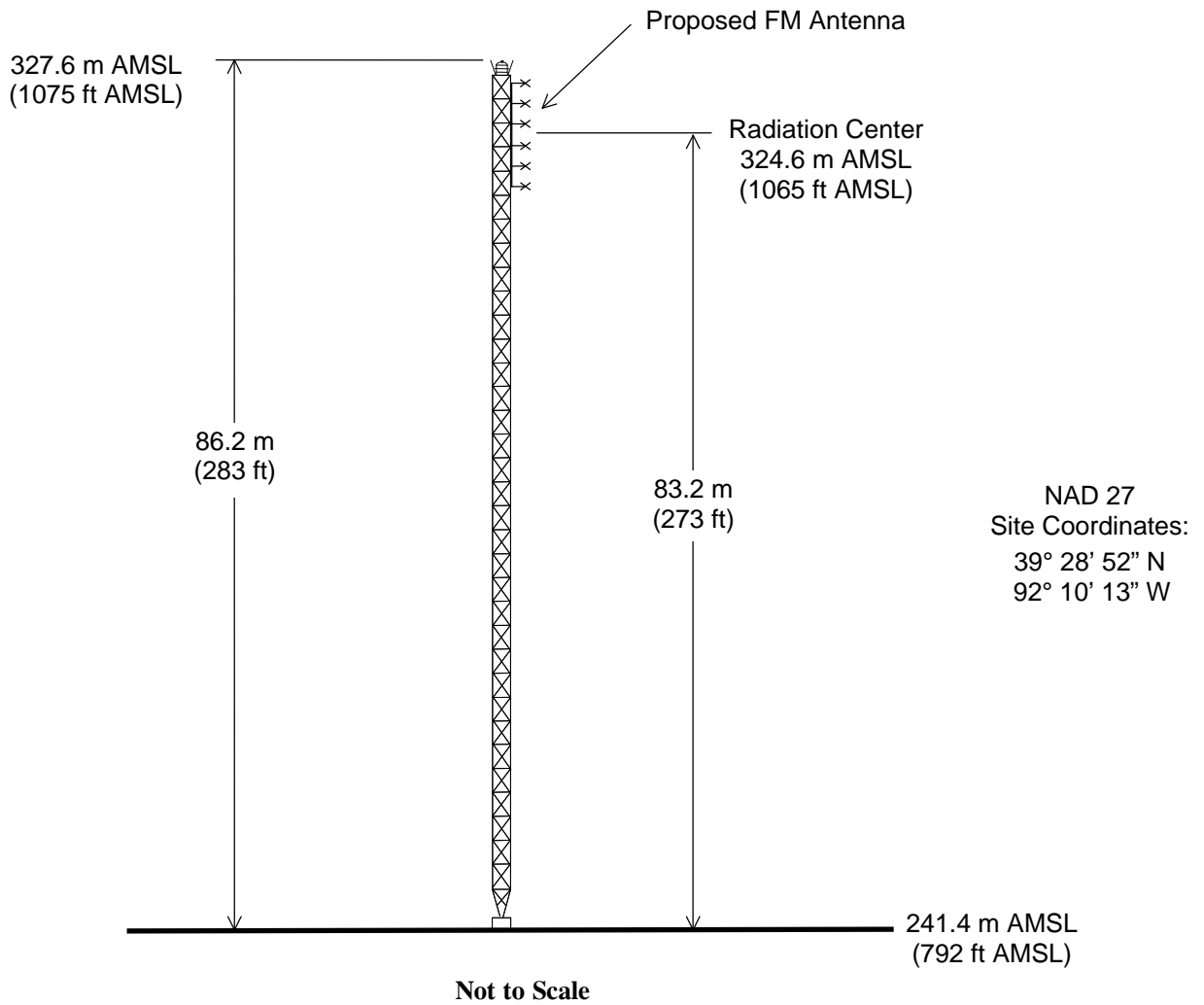
Jonathan N. Edwards

du Treil, Lundin & Rackley, Inc.
201 Fletcher Avenue
Sarasota, Florida 34237
(941) 329-6000

April 29, 2007



ASRRN: 1004628



PROPOSED ANTENNA AND SUPPORTING STRUCTURE

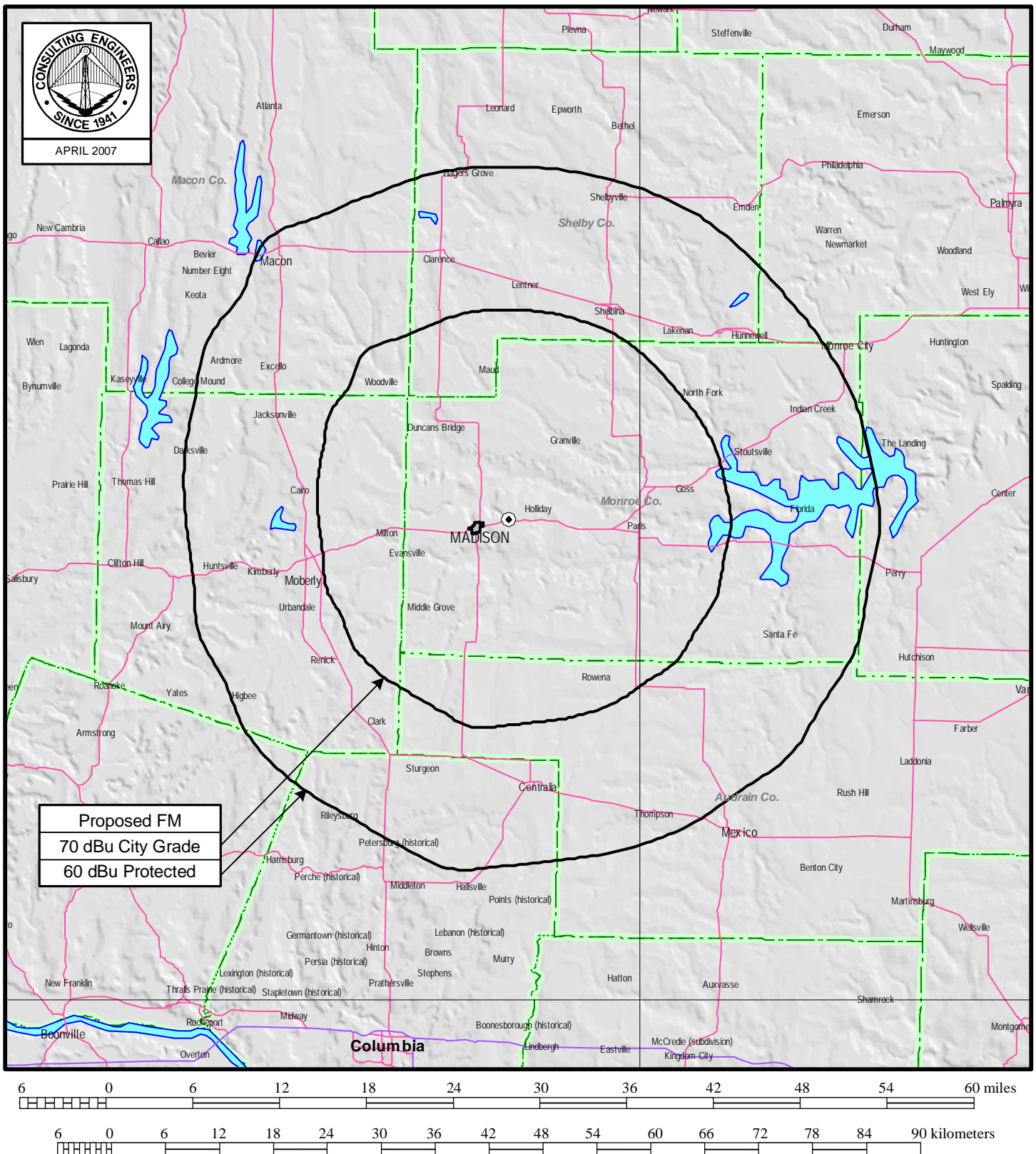
NEW FM STATION

MADISON, MISSOURI

CH 247C3 25 KW 100 M

du Treil, Lundin & Rackley, Inc. Sarasota, Florida

Figure 2



FM Study

du Treil, Lundin, & Rackley, Inc., Sarasota, Florida


Station Channel: 247 **Station Coordinates:** 039-28-52 092-10-13

Class: C3 **Buffer Distance:** 50 km

Comment: Class C3 Separation Study

Callsign	Status	Channel	Service	Freq.	City		State	Co.	Rec Type	Latitude	Dist. (km)	Sep. (km)	Spacing (km)	
Facility ID	ARN			Class	DA	Ant ID	ERP (kW)	HAAT (m)	73.215	Longitude	Bear. (deg)	73.215 (km)	Comment	
KCMQ	LIC	244	FM	96.7	COLUMBIA			MO	US	C	038-41-30	87.88	76	11.88
74583	BLH	19991020AAA		C1	N	28384	100	278		N	092-05-44	175.77	70	CLEAR
KZBK	LIC	245	FM	96.9	BROOKFIELD			MO	US	C	039-54-32	91.06	56	35.06
4930	BLH	19960117KC		C2	N		50	150		N	093-04-34	301.83	50	CLEAR
KFTK	LIC	246	FM	97.1	FLORISSANT			MO	US	C	038-46-45	147.01	144	3.01
73890	BLH	19851127KC		C1			100	171		N	090-43-43	121.66	133	CLOSE
	VAC	247	FA	97.3	MADISON			MO	US	C	039-24-37	7.94		
0	RM	10017MO		C3							092-10-58	187.76		
NEW	APP	247	FM	97.3	MADISON			MO	US	C	039-24-37	7.94		
171017	BSFH	20061219AFD		C3							092-10-58	187.76		
KCXM	LIC	247	FM	97.3	LEE'S SUMMIT			MO	US	C	039-05-26	203.24	211	-7.76
4933	BLH	20030130AAH		C1	N		55	357		Y	094-28-18	258.36	200	SHORT
KCXM	RSV	247	FA	97.3	LEE'S SUMMIT			MO	US	C	039-04-20	214.17	211	3.17
4933	RM	10017		C1							094-35-45	258.48	200	CLOSE
KHDK	LIC	247	FM	97.3	NEW LONDON			IA	US	C	040-47-53	158.94	142	16.94
89613	BLH	20041004AAP		A	N		3.8	125		N	091-26-22	22.75	119	CLEAR
WBBA-FM	LIC	248	FM	97.5	PITTSFIELD			IL	US	C	039-34-53	118.53	114	4.53
62351	BLH	19890821KE		B1			10	93		N	090-47-52	84.15	96	CLOSE
KJMO	LIC	248	FM	97.5	LINN			MO	US	C	038-29-56.9	111.81	89	22.81
162262	BLH	20060714AAX		A	N		6	100		N	091-53-00.4	167.12	72	CLEAR
KPOW-FM	LIC	249	FM	97.7	LA MONTE			MO	US	C	039-03-10	105.92	76	29.92
78321	BLH	20021101ABG		C1	N		100	299		N	093-16-01	243.58	70	CLEAR
KICK-FM	LIC	250	FM	97.9	PALMYRA			MO	US	C	039-45-26	65.25	56	9.25
5203	BLH	20001016ABT		C2	N		43	162		N	091-29-58	61.67	50	CLOSE