

ENGINEERING EXHIBIT
APPLICATION FOR CONSTRUCTION PERMIT
AUXILIARY TRANSMITTING FACILITY
RADIO ONE LICENSES, LLC
STATION KMJQ
HOUSTON, TEXAS
FACILITY ID 11971
CH 271 85 KW 510 M

Engineering Statement

This Engineering Statement and the attached Figures 1 and 2 were prepared on behalf of Radio One Licenses, LLC; licensee of FM broadcast station KMJQ Houston, Texas. The applicant proposes to establish an auxiliary facility for KMJQ to be located approximately 310 meters south of the KMJQ licensed site. The proposed 60 dBu coverage of the auxiliary station will be entirely within the existing KMJQ licensed 60 dBu coverage area, as shown on Figure 2.

The auxiliary antenna will be side-mounted on a tower bearing registration number 1059622, with center of radiation at 506 meters above ground level. See Figure 1. The proposed eight bay FM antenna with approximate one wavelength spacing between bays will employ circular polarization. The antenna will also be used by the auxiliary operation of co-owned station KBXX Houston, TX. Station KBXX will employ effective radiated power of 100 kilowatts. Several other FM and TV stations have antennas mounted on the tower.

With respect to human exposure to radiofrequency radiation, it has been determined based on the FCC's OET Bulletin 65, *Evaluating Compliance with FCC Guidelines for Human Exposure to Radiofrequency Electromagnetic Fields*, that the power density for the

proposed auxiliary operations of both WMJQ and KBXX (185 kilowatts), calculated two meters above ground level is 0.0047 milliwatts per centimeter squared, or 2.3 percent of the guideline value for an uncontrolled environment. As the predicted power density is less than 5 percent of the guideline value at this multi-user site, the proposal meets FCC requirements. A fence limits access to the tower, and warning signs are posted. If it becomes necessary for workers to ascend the tower, in conjunction with other users, the power of the proposed station will be reduced or the station operation terminated so as to protect workers from exposure to radiofrequency radiation in excess of the guideline value.

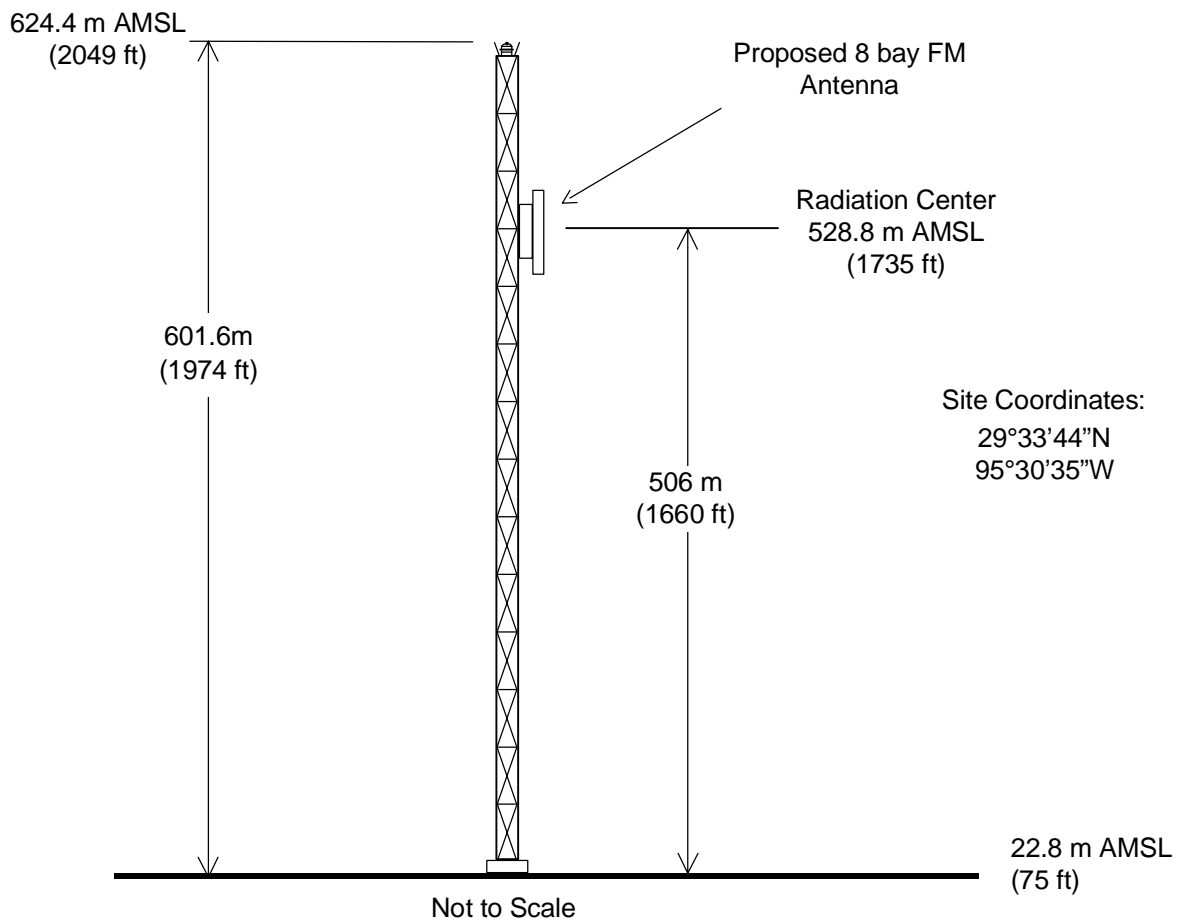
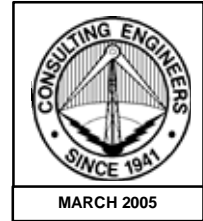


Louis R. du Treil, Sr.
du Treil, Lundin & Rackley, Inc.
201 Fletcher Avenue
Sarasota, Florida 34237-6019
941 329 6000

March 17, 2005

Figure 1

Tower Registration number: 1059622

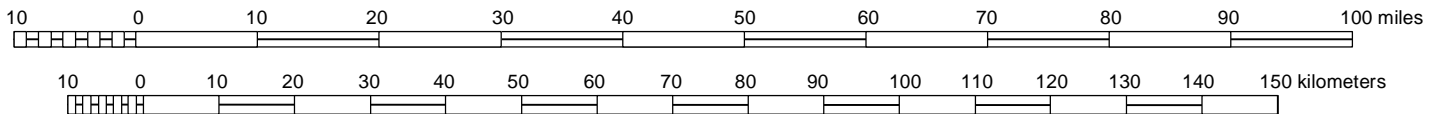
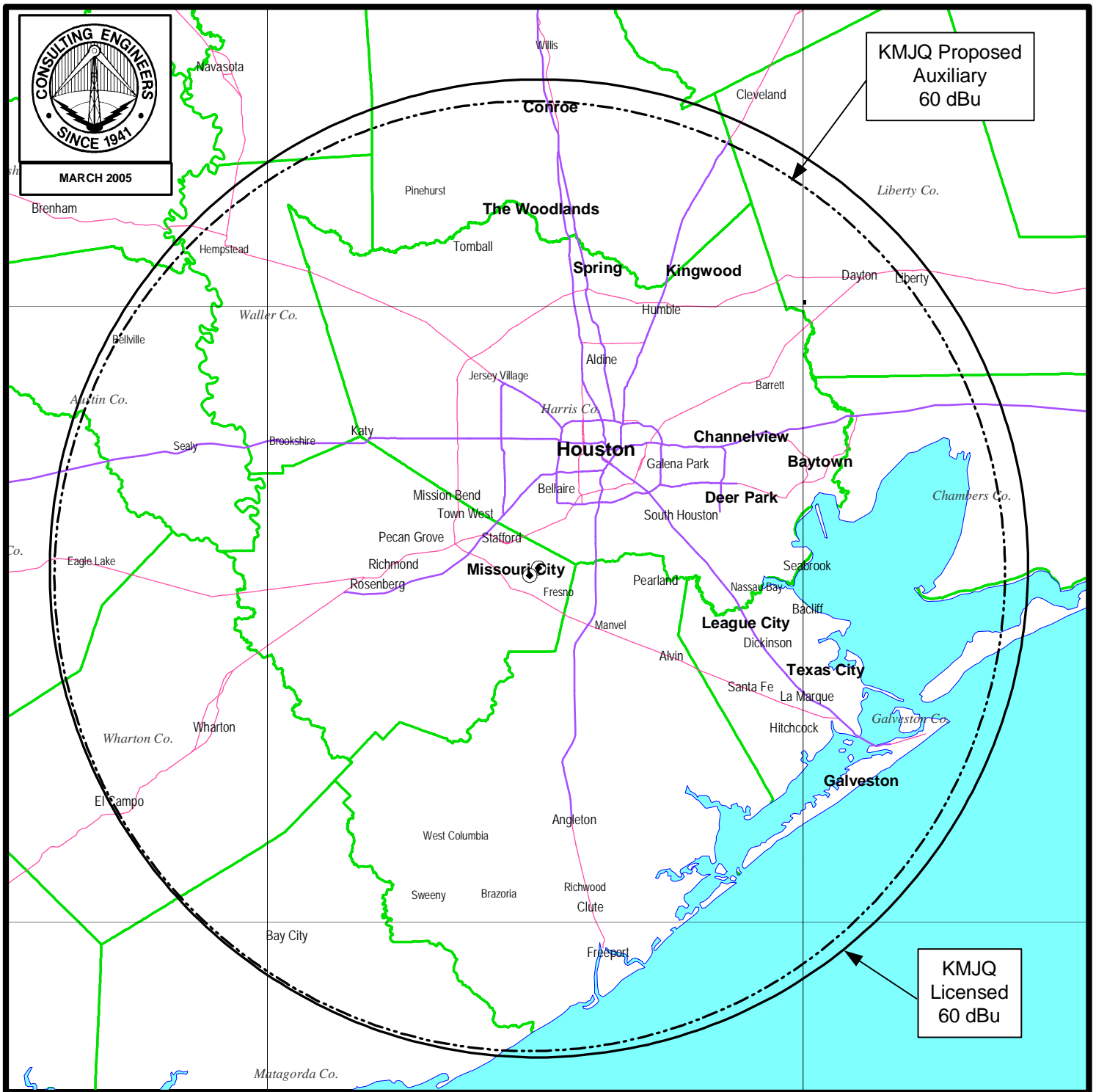


PROPOSED AUXILIARY TOWER AND ANTENNA

FM STATION KMJQ
HOUSTON, TEXAS
CH 271C 85 KW 510 M

du Treil, Lundin & Rackley, Inc. Sarasota, Florida

Figure 2



PREDICTED 60 dBu COVERAGE CONTOURS

FM STATION KMJQ
(AUXILIARY LOCATION)
HOUSTON, TEXAS
CH 271C 85 KW 510 M

du Treil, Lundin & Rackley, Inc. Sarasota, Florida