

## Exhibit 12.1 - Copy of Existing Antenna Structure Registration

### Registration Detail

Reg Number	1018320	Status	Constructed
File Number	A0021960	Constructed	01/01/1974
FAA Study		EMI	No
FAA Issue Date		NEPA	No

### Antenna Structure

Structure Type TOWER - Free standing or Guyed Structure used for Communications Purposes

Location (in NAD83 Coordinates)

Lat/Long	40-47-34.0 N 092-52-48.0 W	ON FORMER IOWA 278 2.09 KM W OF IOWA 5 5.95 KM N
City, State	CENTERVILLE , IA	

Center of  
AM Array

### Heights (meters)

Elevation of Site Above Mean Sea Level	Overall Height Above Ground (AGL)
285.9	155.4
Overall Height Above Mean Sea Level	Overall Height Above Ground w/o Appurtenances
441.3	153.9

Painting and Lighting Specifications

FCC Paragraphs 1, 3, 4, 13, 21

### Owner & Contact Information

FRN

Licensee ID

Owner

KMGO INC  
Attention To: FRED JENKINS  
402 N 12TH ST  
CENTERVILLE , IA 52544

P: (515)856-3996  
E: KMGOFM@SE-IOWA.NET

Contact

P:  
E:

### Last Action Status

Status	Constructed	Received	04/03/1997
Purpose	New	Entered	04/07/1997
Mode	Mail In (Manual)		

### Related Applications

04/03/1997 A0021960 - New (NE)

### Comments

Comments

None

### Automated Letters

None



## Exhibit 12.2

### Vertical Plan of Antenna System

The site is located on former Iowa 278, 2.09 km west of Iowa 5 and 5.95 km north of Centerville, IA, the city of Centerville, Appanoose County, Iowa.

#### Site Location (NAD 27)

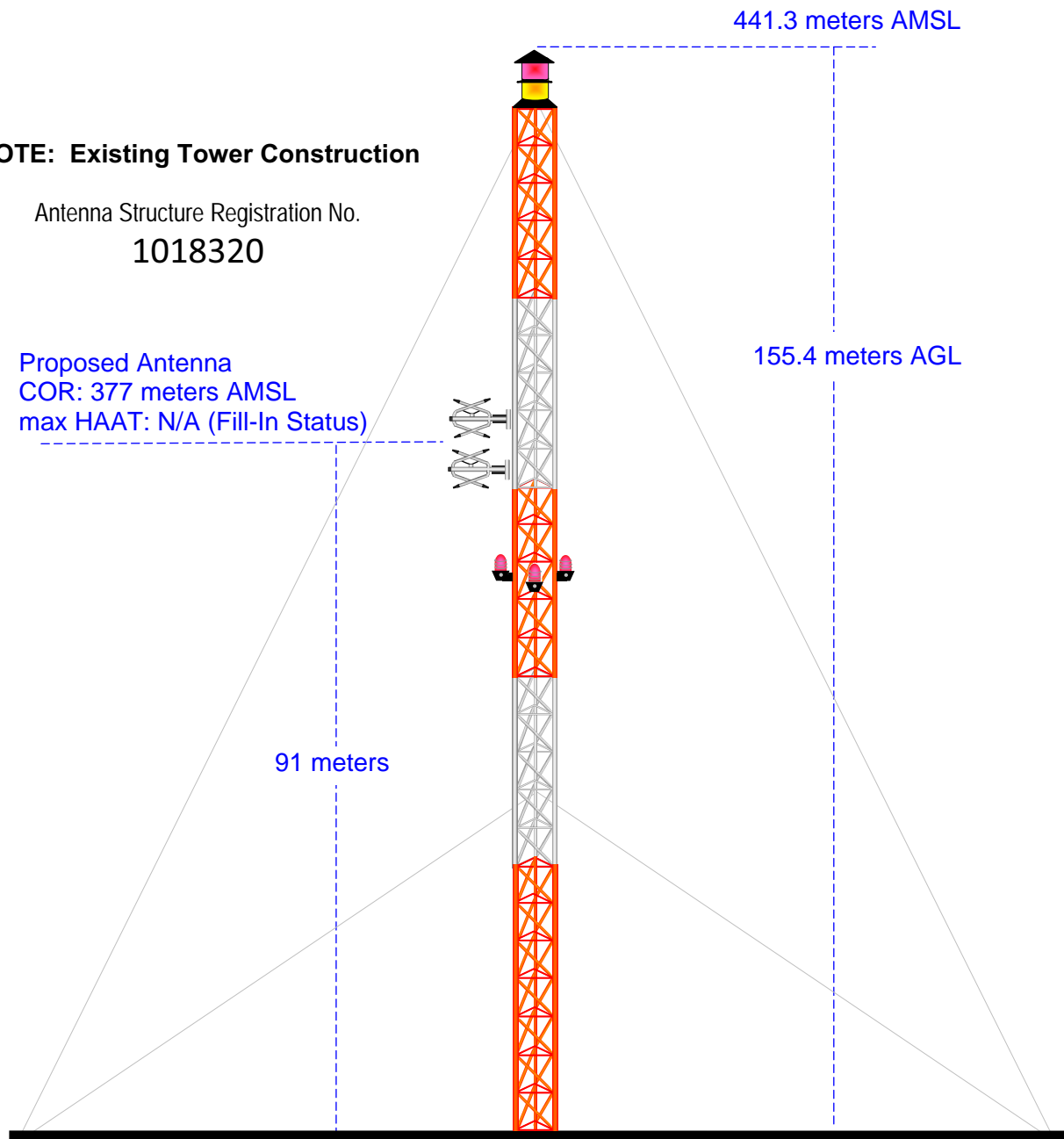
NL: 40° 47' 34"

WL: 92° 52' 47"

#### **NOTE: Existing Tower Construction**

Antenna Structure Registration No.  
**1018320**

Proposed Antenna  
COR: 377 meters AMSL  
max HAAT: N/A (Fill-In Status)



Ground Elevation = 285.9 m AMSL

Drawing is not to Scale

**MUNN-REESE, INC.**

Broadcast Engineering Consultants  
Coldwater, MI 49036

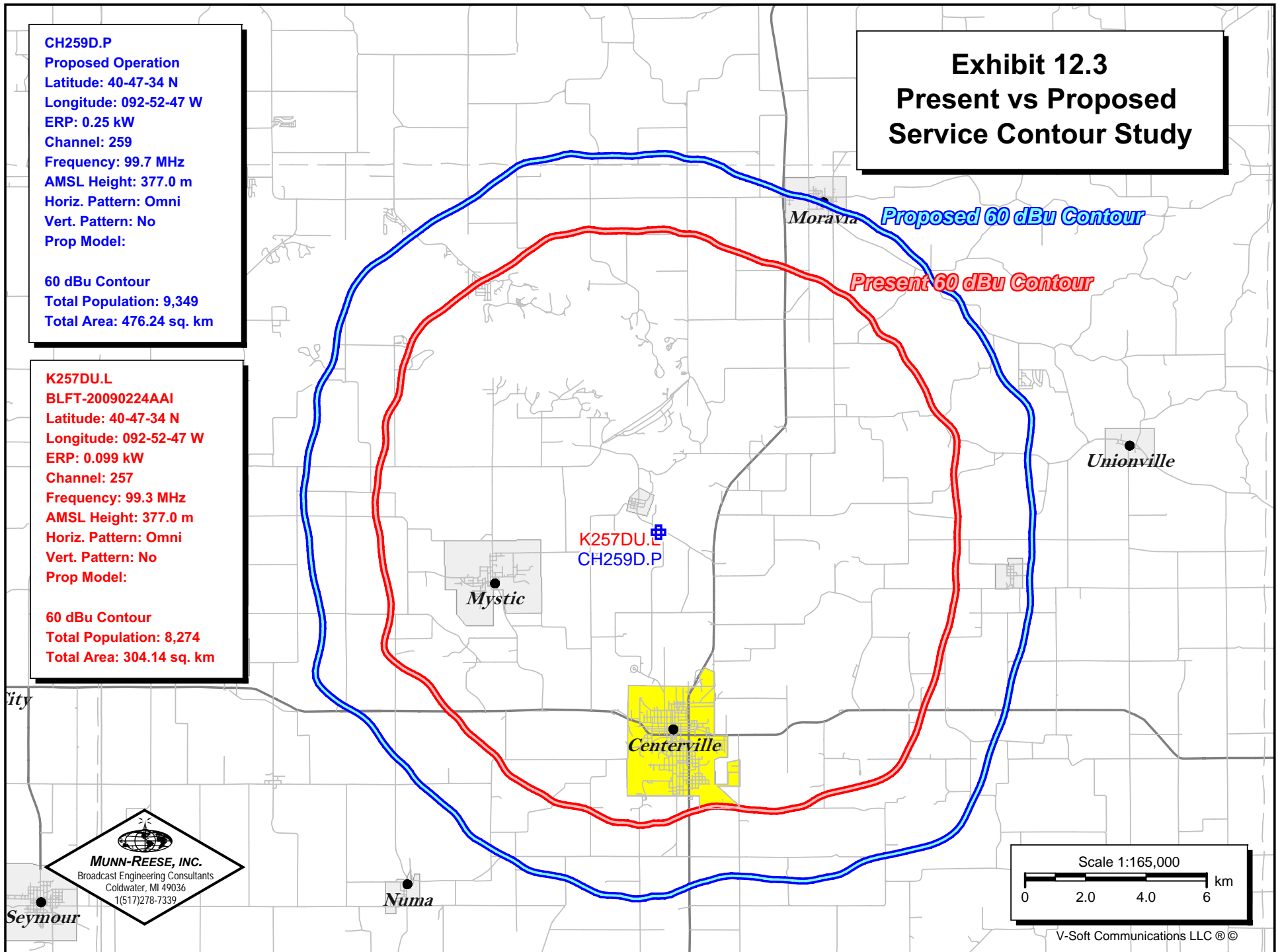
## Exhibit 12.3 Present vs Proposed Service Contour Study

**CH259D.P**  
Proposed Operation  
Latitude: 40-47-34 N  
Longitude: 092-52-47 W  
ERP: 0.25 kW  
Channel: 259  
Frequency: 99.7 MHz  
AMSL Height: 377.0 m  
Horiz. Pattern: Omni  
Vert. Pattern: No  
Prop Model:

60 dBu Contour  
Total Population: 9,349  
Total Area: 476.24 sq. km

**K257DU.L**  
BLFT-20090224AAI  
Latitude: 40-47-34 N  
Longitude: 092-52-47 W  
ERP: 0.099 kW  
Channel: 257  
Frequency: 99.3 MHz  
AMSL Height: 377.0 m  
Horiz. Pattern: Omni  
Vert. Pattern: No  
Prop Model:

60 dBu Contour  
Total Population: 8,274  
Total Area: 304.14 sq. km



## Exhibit 12.4 Proposed vs Primary Service Contour Study

**KMGO.L**  
BLH6437  
Latitude: 40-47-34 N  
Longitude: 092-52-47 W  
ERP: 100.00 kW  
Channel: 254  
Frequency: 98.7 MHz  
AMSL Height: 424.0 m  
Horiz. Pattern: Omni  
Vert. Pattern: No  
Prop Model:

**KMGO.C**  
BPH20060315ADN  
Latitude: 41-02-22 N  
Longitude: 093-00-32 W  
ERP: 94.00 kW  
Channel: 254  
Frequency: 98.7 MHz  
AMSL Height: 737.0 m  
Horiz. Pattern: Omni  
Vert. Pattern: No  
Prop Model:

**CH259D.P**  
Proposed Operation  
Latitude: 40-47-34 N  
Longitude: 092-52-47 W  
ERP: 0.25 kW  
Channel: 259  
Frequency: 99.7 MHz  
AMSL Height: 377.0 m  
Horiz. Pattern: Omni  
Vert. Pattern: No  
Prop Model:

*Proposed 60 dBu Contour*

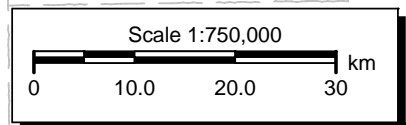
CH259D.P  
KMGO.L

Centerville

*Primary Lic  
60 dBu Contour*

*Primary CP  
60 dBu Contour*

  
**MUNN-REESE, INC.**  
Broadcast Engineering Consultants  
Coldwater, MI 49036  
1(517)278-7339



V-Soft Communications LLC ©

# Exhibit 12.5

## Tabulation of Proposed Allocation

### Horizon Christian Fellowship

REFERENCE		CH# 259D - 99.7 MHz, Pwr= 0.25 kW, HAAT= 90.9 M, COR= 377 M								DISPLAY DATES	
40 47 34.0 N.		Average Protected F(50-50)= 7.09 km								DATA	02-21-09
92 52 47.0 W.		Omni-directional								SEARCH	02-25-09
CH CITY	CALL	TYPE STATE	ANT --	AZI <--	DIST FILE #	LAT LNG	PWR(kW) HAAT(M)	INT(km) COR(M)	PRO(km) LICENSEE	*IN* (Overlap	*OUT* in km)
260C3 KCWN New Sharon		LIC _CN IA		17.2 197.4	58.1 BLH19951025KA	41 17 32.0 92 40 24.0	25.000 86	59.8 324	38.8 Crown Broadcasting Company	-13.7*<	1.7
259C1 KBEA-FM Muscatine		LIC _C_ IA		59.6 240.8	182.2 BLH20000419ACN	41 36 22.0 90 59 35.0	100.000 265	170.5 481	71.2 Cumulus Licensing Llc	-0.8<	68.0
258D K258BG Oskaloosa		LIC _V_ IA		17.4 197.6	56.4 BLFT20070730ABQ	41 16 37.0 92 40 38.0	0.099 297	12.0 297	8.5 Horizon Christian Fellowsh	32.4	30.2
206C3 KDWI Ottumwa		CP _CX IA		66.2 246.5	46.8 BPED19950213MB	40 57 41.0 92 22 13.0	13.500 137	34.0 368	105.6 Iowa St Un Of Science & Te	11.5R	35.4M
205D K205CA Ottumwa, Etc. Translator for KDFR, Des Moines, IA To Channel 274		LIC DHN IA		58.4 238.7	48.0 BLFT19930629TB	41 01 03.0 92 23 36.0	0.250 27	34.0 260	105.6 Family Stations, Inc.	9.5R	38.5M
262C KDRB Des Moines		LIC _CX IA		332.2 151.7	130.6 BLH20050323ACG	41 49 48.0 93 36 54.0	100.000 547	13.0 837	89.4 Citicasters Licenses, Inc.	105.0	40.1
258C1 WCOY Quincy		LIC NCX IL		130.3 311.2	145.1 BLH20021125AAV	39 56 30.0 91 35 03.0	100.000 149	86.5 316	57.0 Staradio Corporation	44.9	67.5
262D K262BU Unionville		LIC _C_ MO		208.2 28.0	60.7 BLFT20070910AAJ	40 18 41.0 93 13 06.0	0.205 390	1.0 390	12.8 Horizon Christian Fellowsh	47.8	46.7
258A KPUL Winterset		LIC _CN IA		308.2 127.5	110.2 BLH19920602KA	41 24 02.0 93 54 58.0	6.000 100	46.0 396	29.8 Positive Impact Media, Inc	51.3	61.1
259C0 KKSJN Kansas City		LIC _C_ MO		215.8 34.8	241.2 BLH20030602CHV	39 01 20.0 94 30 49.0	100.000 335	175.2 611	74.4 Entercom Kansas City Licen	54.5	127.5
256C2 KSKB Brooklyn		LIC _C_ IA		23.4 203.8	108.8 BLED20070328AAA	41 41 23.0 92 21 31.0	44.000 160	5.9 427	51.8 Florida Public Radio, Inc.	90.8	55.9
260C3 KIRK Macon One-step application from Channel 260A.		LIC _CN MO		168.8 349.0	134.9 BLH19980625KA	39 36 02.0 92 34 24.0	12.500 141	57.6 371	38.3 Moberly/ Macon License Co,	65.7	79.8
256C3 NEW Marceline One Step Application		CP _CX MO		179.5 359.5	109.6 BNPH20070430AAD	39 48 20.0 92 52 05.0	25.000 100	3.6 354	35.1 Gregory, Joe G	94.0	73.4
205A KSTM Indianola		LIC _CN IA		318.2 137.7	85.9 BLED19940422KD	41 22 00.0 93 33 57.0	0.100 38	34.0 307	105.6 Simpson College	9.5R	76.4M
261C2 KKWK Cameron		LIC NCN MO		228.8 48.0	140.0 BLH19950414KB	39 57 28.0 94 06 55.0	50.000 150	6.2 415	53.8 Cameron/ Bethany License C	122.4	85.2
205A KDMR Mitchellville		LIC DCX IA		339.1 158.8	104.2 BLED20050228AAU	41 40 05.0 93 19 43.0	1.000 72	34.0 354	105.6 University Of Northern Iow	9.5R	94.7M

Terrain database is NGDC 30 SEC , R= 73.215 qualifying spacings or FCC minimum Spacings in KM, M= Margin in KM  
Contour distances are on direct line to and from reference station. Reference zone = 2, Co to 3rd adjacent.  
Ant Column: (D= DA Standard, Z= DA 73.215, N= Not DA 73.215, \_= Omni), Polarization (C,H,V,E), Beamtilt(Y,N,X)  
\*\*\*affixed to 'IN' or 'OUT' values = site inside protected contour.  
"<" = Contour Overlap