

ENGINEERING EXHIBIT
APPLICATION FOR CONSTRUCTION PERMIT
ENTRAVISION HOLDINGS, LLC
FM BROADCAST STATION KJMN
CASTLE ROCK, COLORADO
FACILITY ID 10056
CH 221C2 42 KW 163 M

ENGINEERING EXHIBIT
APPLICATION FOR CONSTRUCTION PERMIT
ENTRAVISION HOLDINGS, LLC
FM BROADCAST STATION KJMN
CASTLE ROCK, COLORADO
FACILITY ID 10056
CH 221C2 42 KW 163 M

Table of Contents

| | |
|----------|---|
| | Engineering Statement |
| Figure 1 | Transmitter Site Location Map |
| Figure 2 | Tower Sketch |
| Figure 3 | Predicted Coverage Contours |
| Figure 4 | Allocation Study – Existing and Proposed Separation Study |
| Figure 5 | Map showing Allocation with Station KRCC Colorado Springs, CO |

ENGINEERING EXHIBIT
APPLICATION FOR CONSTRUCTION PERMIT
ENTRAVISION HOLDINGS, LLC
FM BROADCAST STATION KJMN
CASTLE ROCK, COLORADO
FACILITY ID 10056
CH 221C2 42 KW 163 M

Engineering Statement

The engineering exhibit of which this statement is part was prepared on behalf of Entravision Holdings, LLC (Entravision), licensee of FM Broadcast Station KJMN Castle Rock, Colorado. Station KJMN operates on channel 221C2 with effective radiated power (ERP) of 33 kilowatts with antenna height above average terrain (HAAT) of 183 meters. By means of this application, Entravision seeks to relocate the transmitting facility of KJMN and to change operating parameters.

Station KJMN will utilize the tower that supports the antenna for FM booster station KKCS-FM Sedalia, CO on channel 270 and the TV antenna for KSBS-LP Denver, Co. From this location, the KJMN application complies with the rules and policies of the Federal Communication Commission. Processing of the application employing the provisions of 47 CFR 73.215 is requested.

Proposed Transmitter Location

Station KJMN will utilize an existing tower, which is located north of Jarre Canyon Road (Colorado Highway 67), as shown on the map attached as Figure 1.

The geographic coordinates (NAD27) as measured by a Garmin Etrex Vista GPS are:

39° 23' 06.6" North Latitude

105° 02' 51.6" West Longitude.

As shown on Figure 2, the existing WGBH structure has an overall height of 27.4 meters (90 feet) AGL and 2235.7 meters (7334.9 feet) above mean sea level (AMSL). The proposed eight-bay antenna with one-half wavelength spacing between bays, will be side-mounted near the top of the support tower with center of radiation 18 meters (59 feet) AGL and 2226.3 meters (7304 feet) AMSL. The resulting height above average terrain is 163 meters.

There are no AM stations located within 3.2 kilometers of the proposed site. FM booster station KKCS-FM operates on channel 270 employing ERP of 0.099 KW with antenna 21 meters AGL (Facility ID 136745). Low power TV station KSBS-LP currently operates with ERP of 33.6 KW on channel 67 and holds a construction permit to operate on channel 47 with 59.1 KW. The KSBS-LP antenna is located 18.3 meters AGL (Facility ID 67532).

Allocation Considerations

From the existing location, and as shown on sheet 1 of Figure 4, two short-spacings are associated with the licensed operation of KJMN. Station KRCC Colorado Springs, CO on channel 218C1 is short-spaced by 1.9 kilometers. Station KDJM Broomfield, CO on channel 2223C1 is short-spaced by 1.1 kilometers.

From the proposed location, the short spacing with KDJM will be eliminated. The short-spacing with the station KRCC will be increased to 6.2 kilometers; therefore, processing of the KJMN application employing the provisions of 47 CFR 73.215 is requested. Figure 5 shows the pertinent contours of KRCC and proposed KJMN.

Proposed Antenna

Station KJMN proposes to utilize an ERI type SPHX-8AE-HW, eight-bay omni directional antenna with spacing of one-half wavelength between bays. The antenna will be side-mounted near the top of the existing tower as shown on Figure 2.

Coverage Contours

Figure 3 is a map showing the predicted 70 dBu and 60 dBu contours for the proposed operation of KJMN. The proposed 70 dBu contour provides service to all of Castle Rock. The proposed 60 dBu contour encloses 2,424,615 persons, which represents a gain of 686,897 persons as compared with the 60 dBu coverage of the existing KJMN operation.

Table Mountain Radio Receiving Zone

The KJMN proposal complies with the requirements of 47CFR 73.1030 regarding the “Quiet Zone”, which is located approximately 82.9 kilometers at a bearing of 349.5 degrees true. KJMN signal strength at Table Mountain will be less than 1 mV/m.

Potential Radiofrequency Radiation Exposure

The proposed KJMN facilities were evaluated in terms of potential radiofrequency radiation exposure to humans at two meters above ground level in accordance with OST Bulletin No. 65, "*Evaluating Compliance With FCC-Specified Guidelines for Human Exposure to Radiofrequency Radiation*", August 1997.

The proposed KJMN antenna center of radiation will be 18 meters above ground level. The calculated power density two meters above ground level at the base of the tower was determined to be 0.0617 milliwatts per centimeter squared or 30.8 percent of the FCC guideline value for an uncontrolled environment. FM booster station KKCS adds 0.2 percent and LPTV station KSBS-LP when operating on channel 47 adds 54 percent, for a grand total of 85 percent of the guideline value for an uncontrolled environment.

Access to the tower is restricted and appropriately marked with warning signs. In concert with other users, and in the event that workers or other authorized personnel climb the tower, spreading out the work over a longer period of time will reduce the average exposure, or work will be scheduled when these stations are operating at reduced power or are off the air.



Louis R. du Treil, Sr.
du Treil, Lundin & Rackley, Inc.
201 Fletcher Avenue
Sarasota, Florida 34237-6019
941 329 6000

May 20, 2004

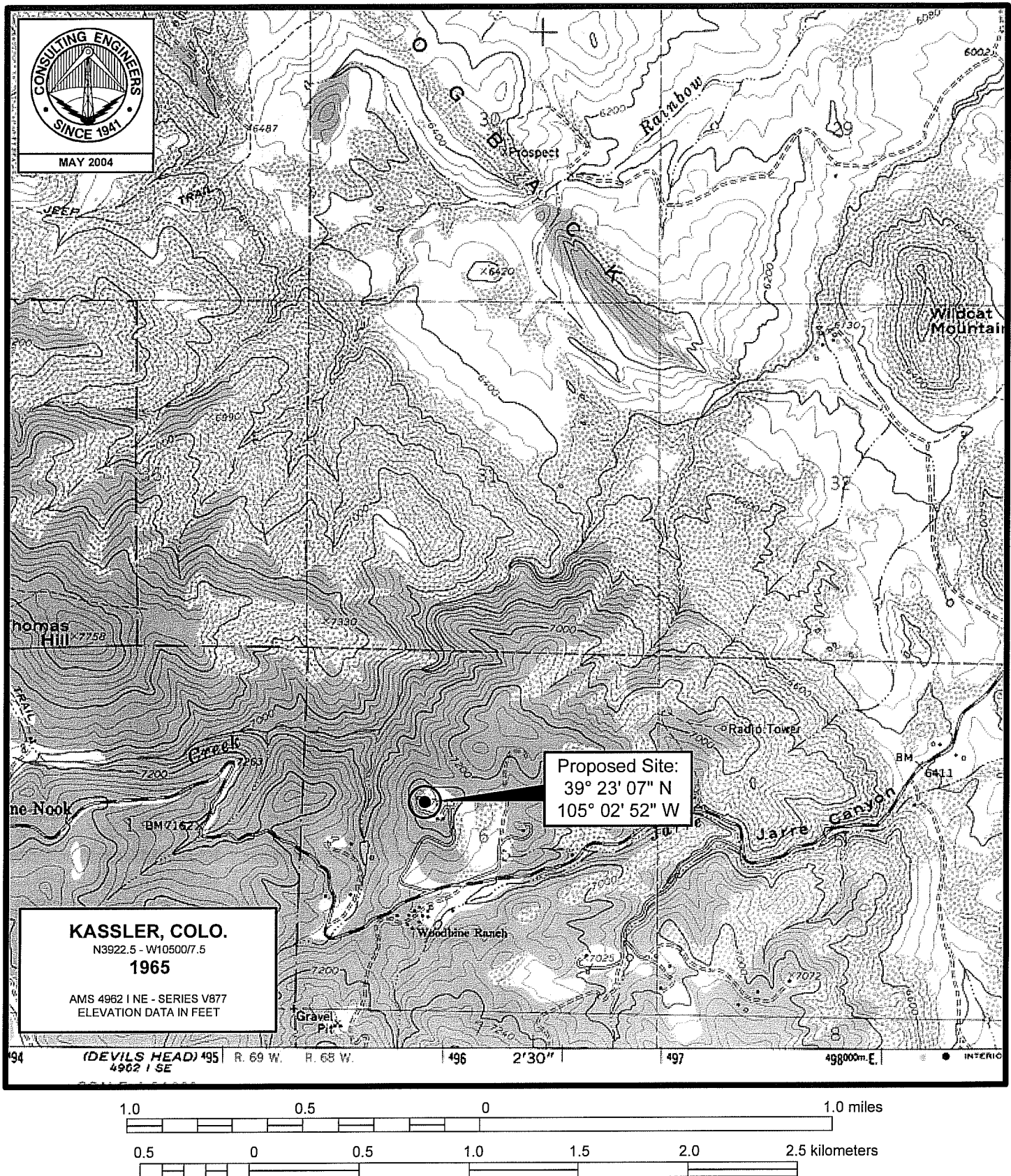
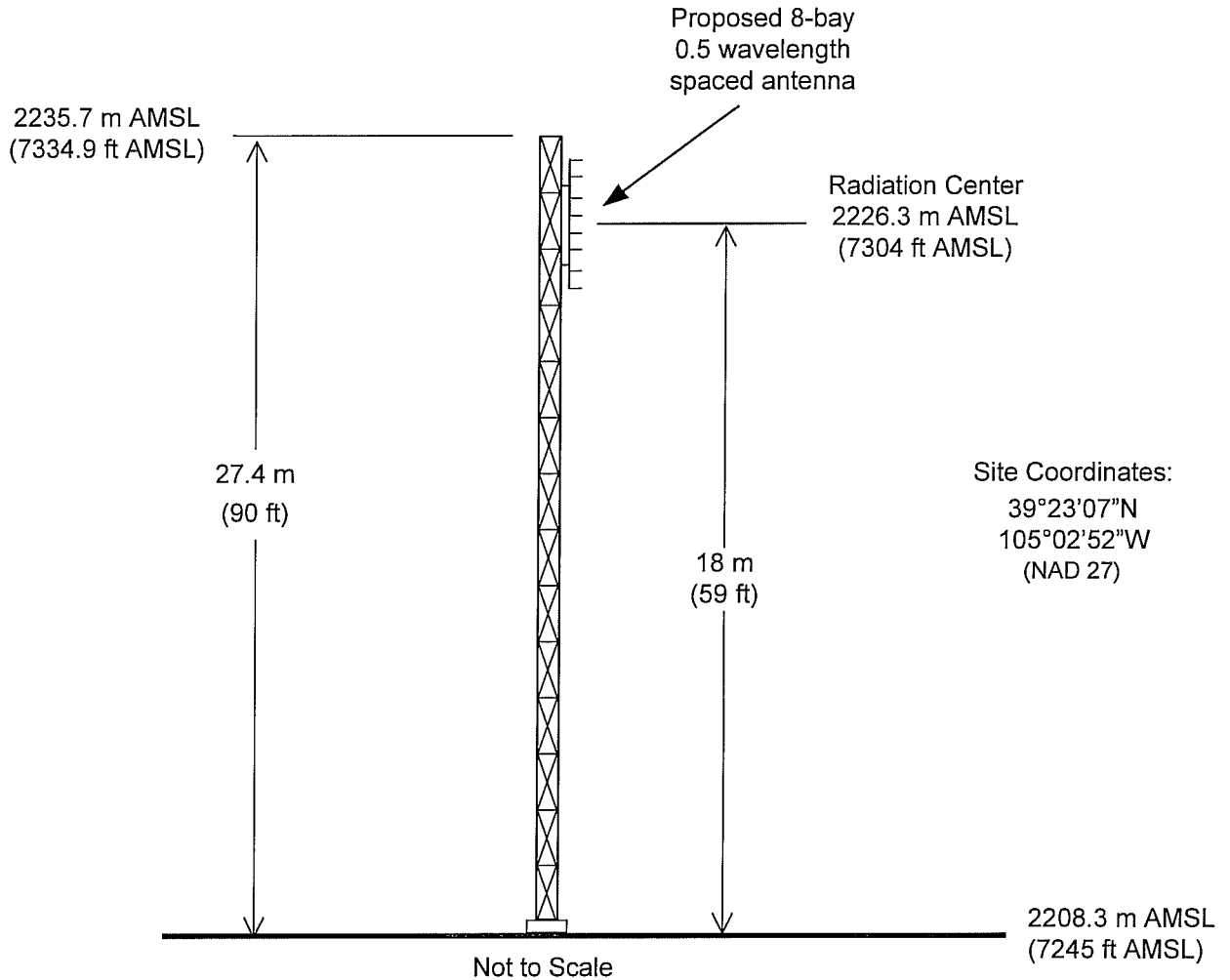
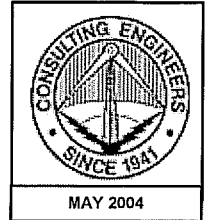


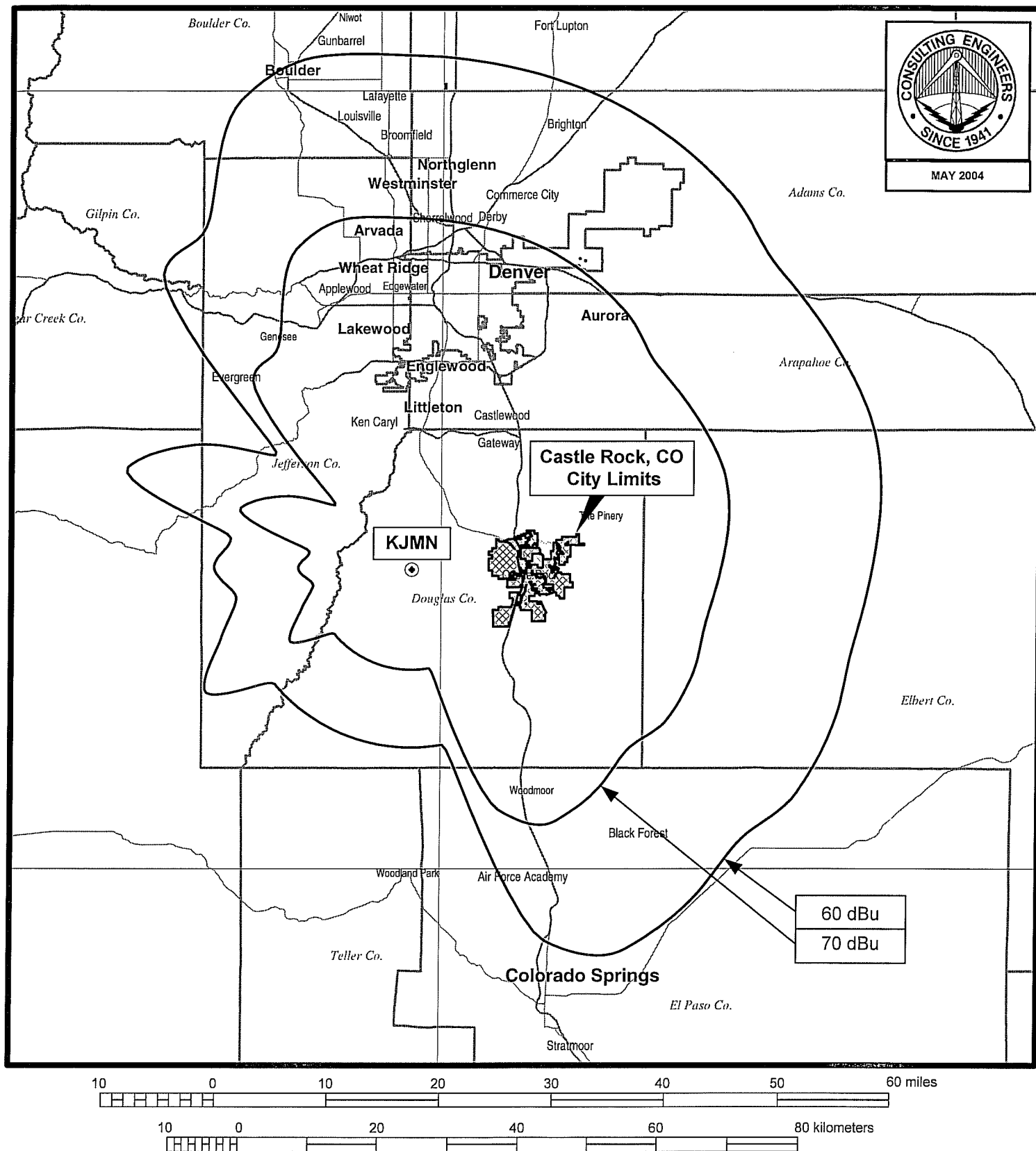
Figure 2



PROPOSED ANTENNA AND SUPPORTING STRUCTURE

FM STATION KJMN
CASTLE ROCK, COLORADO
CH 221C2 42 KW 163 M

du Treil, Lundin & Rackley, Inc. Sarasota, Florida



PREDICTED COVERAGE CONTOURS

FM STATION KJMN
CASTLE ROCK, COLORADO
CH 221C2 42 KW 163 M

Figure 4
Sheet 1 of 2

FM Station KJMN
Castle Rock, Colorado
CH 221C2 42kW 163M

Existing Separation Study
39-25-15 104-39-15

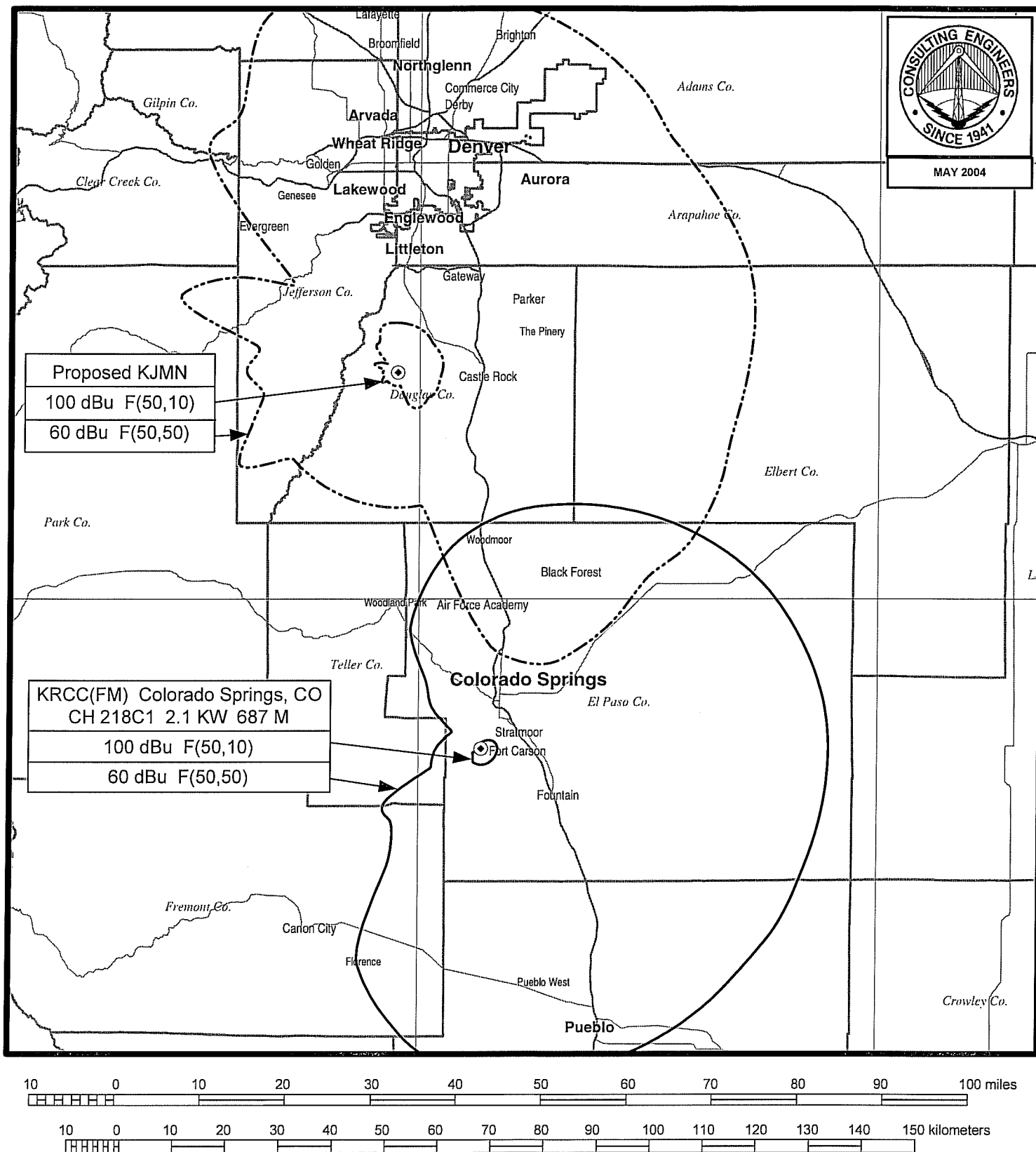
| Call Id | City St Status | File Num | Channel Freq | ERP HAAT | DA ID | Latitude Longitude | 73 215 | Bear | Dist. (km) | Req. (km) |
|----------------|-------------------------|---------------------|----------------|--------------|------------|-----------------------|--------|-------|-----------------|--------------|
| KRCC 65563 | COLORADO SP CO LIC C | bled 19940124KZ | 218 C1 91.5 | 2.1 687 | Y 14616 | 38-44-43 104-51-42 | N | 193.5 | 77.12 -1.88 | 79 Short |
| KCFP 12326 | PUEBLO CO LIC C | bled 19960618KA | 220 A 91.9 | 0.6 193 | N | 38-22-23 104-33-42 | N | 176 | 116.59 10.59 | 106 Close |
| KUWR 69131 | LARAMIE WY LIC C | bled 19941031KW | 220 C 91.9 | 100 335 | N | 41-18-36 105-27-17 | N | 342.4 | 220.52 32.52 | 188 Clear |
| KJMN 10056 | CASTLE ROCK CO LIC C | BLH 19950929KE | 221 C2 92.1 | 33 183 | N | 39-25-15 104-39-15 | Y | 0 | 0 -190 | 190 Short |
| KTHN 7046 | LA JUNTA CO RSV C | | 221 C3 92.1 | 0 | N | 37-59-15 103-34-02 | N | 149 | 185.08 8.08 | 177 Close |
| KTHN 7046 | LA JUNTA CO LIC C | BLH 6370 | 221 A 92.1 | 3 91 | N | 37-59-15 103-34-02 | N | 149 | 185.08 19.08 | 166 Clear |
| 0 | HUGO CO VAC C | RM 10096 | 222 A 92.3 | 0 | | 39-08-10 103-28-10 | | 106.9 | 107 1 | 106 Close |
| KVRH-F 1020 | SALIDA CO LIC C | BLH 19940517KA | 222 C3 92.3 | 13.5 -200 | N | 38-30-26 106-01-22 | N | 229.8 | 156.07 39.07 | 117 Clear |
| KDJM 59972 | BROOMFIELD CO LIC C | BLH 19940517KA | 223 C1 92.3 | 57 -200 | Y | 40-05-47 106-01-22 | N | 344.4 | 77.93 -1.07 | 79 Short |
| KBIQ 73073 | MANITOU SPR CO LIC C | BMLH 20030423AAT | 274 C 102.7 | 72 695 | N | 38-44-43 104-51-39 | N | 193.4 | 77.1 42.1 | 35 Clear |

Figure 4
Sheet 2 of 2

FM Station KJMN
 Castle Rock, Colorado
 CH 221C2 42 kW 163m

Proposed Separation Study
39-23-07 105-02-52

| Call Id | City St Status | File Num | Channel Freq | ERP HAAT | DA ID | Latitude Longitude | 73 215 | Bear | Dist. (km) | Req. (km) |
|----------------|-------------------------|---------------------|-----------------|--------------|------------|-----------------------|-----------|-------|------------------|--------------|
| KRCC 65563 | COLORADO SP CO LIC C | BLD 19940124KZ | 218 C1 91.5 | 2.1 687 | Y 14616 | 38-44-43 104-51-42 | N | 167.2 | 72.85 -6.15 | 79 Short |
| KCFP 12326 | PUEBLO CO LIC C | BLD 19960618KA | 220 A 91.9 | 0.6 193 | N | 38-22-23 104-33-42 | N | 159.3 | 120.02 14.02 | 106 Close |
| KUWR 69131 | LARAMIE WY LIC C | BLD 19941031KW | 220 C 91.9 | 100 335 | N | 41-18-36 105-27-17 | N | 351 | 216.5 28.5 | 188 Clear |
| KJMN 10056 | CASTLE ROCK CO LIC C | BLH 19950929KE | 221 C2 92.1 | 33 183 | N | 39-25-15 104-39-15 | Y | 83.2 | 34.13 -155.87 | 190 Short |
| KTHN 7046 | LA JUNTA CO RSV C | | 221 C3 92.1 | 0 | N | 37-59-15 103-34-02 | N | 140 | 201.67 24.67 | 177 Clear |
| KTHN 7046 | LA JUNTA CO LIC C | BLH 6370 | 221 A 92.1 | 3 91 | N | 37-59-15 103-34-02 | N | 140 | 201.67 35.67 | 166 Clear |
| 0 | HUGO CO VAC C | RM 10096 | 222 A 92.3 | 0 | | 39-08-10 103-28-10 | | 101 | 139.01 33.01 | 106 Clear |
| KVRH-F 1020 | SALIDA CO LIC C | BLH 19940517KA | 222 C3 92.3 | 13.5 -200 | N | 38-30-26 106-01-22 | N | 221.1 | 129.02 12.02 | 117 Close |
| KDJM 59972 | BROOMFIELD CO LIC C | BLH 20010501AAA | 223 C1 92.5 | 57 377 | Y 37861 | 40-05-47 104-54-04 | N | 9 | 79.95 0.95 | 79 Close |
| KBIQ 73073 | MANITOU SPR CO LIC C | BMLH 20030423AAT | 274 C 102.7 | 72 695 | N | 38-44-43 104-51-39 | N | 167.2 | 72.87 37.87 | 35 Clear |



ALLOCATION STUDY WITH KRCC(FM)

FM STATION KJMN
 CASTLE ROCK, COLORADO
 CH 221C2 42 KW 163 M