

EXHIBIT E-1  
TECHINICAL STATEMENT  
K265EC ESTES PARK, COLORADO  
MOUNTAIN COMMUNITY TRANSLATORS, LLC.  
APRIL 2008

This Technical Statement is in support of a minor change application being filed for K265EC Estes Park, Colorado, Facility ID 142146.

K265EC seeks to change channels from 265D to channel 267D. It also seeks to decrease its Effective Radiated Power from 250 watts to 7 watts and change its type of directional antenna system, and relocate its transmitter site to an existing tower site known as Milner Mountain.

The change in channels is requested to reduce adjacent channel interference.

Figure 1 is a channel interference study, which shows that operation on K265EC on channel 267D will not cause any interference to any other stations.

Figure 2 is a more detailed interference study conducted against KOSI Denver, Colorado on channel 266C.

Figure 3 is a detailed interference study conducted against KTNI Strasburg, Colorado on channel 268C.

Figure 4 is a detailed interference study conducted against KKNZ-LP Fort Collins, Colorado on channel 268L1.

Figure 5 is a contour map which shows that the current 60 DBU contour of K265EC will overlap with the proposed 60 DBU contour of K265EC.

There will be some overlap with a Construction Permit for KOLZ Cheyenne, Wyoming on channel 264C1. Figure 6 shows that the predicted 61.5 dbu F50,50 contour of the proposed KOLZ will be produced at the proposed transmitter site of K265EC.

This would make the corresponding interference contour for the proposed K265EC be calculated to be 101.5 dbu, F50,10. The contour will not extend beyond 156 meters. Figure 7 shows a U.S.G.S. 7.5 minute topographic map that shows that even if a non-directional antenna was used at the site, the maximum interference contour in any direction. It clearly shows that there are no homes or persons living within this contour. The site is un-inhabited and un-accessible to the general public.

The applicant, Mountain Community Translators, LLC, respectfully requests a waiver of C.F.R. 74.1204(d) of the commission rules based on there is no population within the area of predicted interference.

Figure 8 shows the distances to contours for the various contours used in these studies for K265EC.

Figure 9 shows the directional antenna data for the proposed operation of K265EC on channel 267D.

It was found that the proposed operation of K265EC on channel 267, will comply with all rules pertaining to FM translators set forth by the Commission.

EXHIBIT E-1, FIGURE 1, INTERFERENCE STUDY K265EC ESTES PARK, COLORADO, CHANNEL 267D Average Protected F(50-50)= 9.72 km											
REFERENCE 40 29 37.0 N. 105 10 53.0 W.		CH# 267D		- 101.3 MHz, Pwr= 0.007 kW, HAAT= 336.4 M,		COR= 2080 M		DISPLAY DATES DATA 04-12-08 SEARCH 04-14-08			
CH CITY	CALL	TYPE STATE	ANT STATE	AZI <--	DIST FILE #	LAT LNG	PWR (kW) HAAT (M)	INT (km) COR (M)	PRO (km) LICENSEE	*IN* (Overlap in km)	*OUT*
267D Estes Park	K265EC *	APP CO	DV_	0.0 0.0	0.00 BPFT20080402ACR	40 29 37.0 105 10 53.0	0.007	24.0 2088	6.6 Mountain Community Transla	-30.58*	-30.34*
266C Denver	KOSI	LIC CO	DC_	183.1 3.1	85.00 BLH20020118AAJ	39 43 45.0 105 14 06.0	100.000 495	106.7 2262	72.5 Entercom Denver License, L	-29.27*	0.74
268C Strasburg	KTNI-FM	LIC CO	NHX	121.3 302.1	120.93 BLH20050617ABO	39 55 22.0 103 58 18.0	97.000 625	138.3 2109	93.2 Kbru-fm, Llc, Debtor-in-po	-20.19*	22.57
268C Strasburg	AL0415	RSV CO	___	121.7 302.5	132.52 RM10789	39 51 39.0 103 51 44.0	100.000 600	135.7 2087	91.1	-5.95*	36.30
264C1 Cheyenne	KOLZ	CP WY	NCX	21.5 201.7	66.33 BPH20071030ACB	41 02 55.0 104 53 28.0	100.000 202	9.6 2103	69.8 Citicasters Licenses, L.p.	51.84	-3.56*
268L1 Fort Collins	KKNZ-LP	CP CO	___	39.7 219.8	13.30 BNPL20010122AIV	40 35 08.0 105 04 51.0	0.100 -4	7.5 1564	5.3 Fireside Educational Group	2.68	2.37
265D Estes Park	K265EC	LIC CO	DV_	217.7 37.7	10.19 BLFT20070628ABN	40 25 16.0 105 15 18.0	0.250	0.0 1960	2.7 Mountain Community Transla	2.98	7.28
264C1 Cheyenne	KOLZ	LIC WY	_CY	12.3 192.4	68.97 BLH19790806AO	41 06 01.0 105 00 23.0	100.000 149	7.4 2155	60.0 Citicasters Licenses, L.p.	55.75	8.87
267C0 Bridgeport	KOZY-FM	LIC NE	_C_	36.7 217.6	187.82 BLH20010827AAD	41 50 23.0 103 49 36.0	100.000 339	163.3 1630	65.0 Legacy Communications, Llc	21.11	105.31
267C Sinclair	AU7010615	VAC WY	___	310.3 129.0	222.89 RMrfs113	41 46 19.0 107 13 40.0	100.000 600	198.9 2753	92.5 Fcc	21.15	121.48
264D Lyons	631537	APP CO	DE_	159.4 339.5	30.10 BNPFT20030312ADI	40 14 24.0 105 03 23.0	0.100	0.0 1637	0.8 Educational Communications	25.10	29.26
268D Commerce City	KTNI-FM1	LIC CO	DC_	163.8 344.0	94.60 BLFTB20050802ABY	39 40 31.0 104 52 22.0	20.000	59.4 1766	39.8 Kbru-fm, Llc	29.69	45.58
270C2 Burns	KIGN	LIC WY	_CN	31.7 212.1	81.63 BMLH19950920KD	41 07 01.0 104 40 07.0	50.000 150	5.0 1963	45.6 Gap Broadcasting Cheyenne	72.79	35.96
269D Boulder	K269AE	LIC CO	DHN	182.7 2.7	59.26 BLFTT221	39 57 38.0 105 12 52.0	0.103 -58	0.7 1747	12.8 Cbs Radio Stations Inc.	51.01	46.31
264D Nederland	633422	APP CO	_C_	196.9 16.7	69.62 BNPFT20030311AOW	39 53 37.0 105 25 07.0	0.010	0.2 3212	16.2 Way-fm Media Group, Inc.	60.89	53.26
269D Pinecliffe	K269FE	LIC CO	DH_	198.8 18.6	68.94 BLFT20071001ACF	39 54 21.0 105 26 32.0	0.100	0.0 2671	0.7 Timothy C. Cutforth	60.39	68.10
270C3 Centennial	KGDQ	LIC CO	NC_	174.7 354.8	123.59 BLH20071207AAY	39 23 07.0 105 02 52.0	9.500 163	5.5 2226	58.5 Bustos Media Of Colorado L	111.29	64.97
267C1 Sinclair	NEW	CP WY	_CX	310.1 128.7	231.49 BNPH20070502ABV	41 48 46.0 107 19 00.0	51.000 250	154.1 2400	64.7 Cochise Broadcasting, Llc	74.63	157.88
270D Golden	640689	APP CO	DV_	183.1 3.1	84.97 BNPFT20030314BOM	39 43 46.0 105 14 08.0	0.010	0.2 2244	9.9 Mary Medicus	77.25	74.98
264D Granby	633893	APP CO	DC_	232.0 51.5	81.62 BNPFT20030313AOY	40 02 24.0 105 56 11.0	0.250	0.2 2530	2.7 Educational Communications	75.91	78.78
270D Granby	K270AL	CP CO	DC_	232.0 51.5	81.62 BNPFT20030814ABM	40 02 24.0 105 56 11.0	0.010	0.1 2530	1.9 New Field Broadcasting, Ll	75.99	79.56
269D Evergreen	K269CL	LIC CO	DHN	185.5 5.4	97.07 BLFT19950811TB	39 37 24.0 105 17 24.0	0.035 354	0.0 2646	2.0 Citicasters Licenses, L.p.	89.27	95.00
267C3 Parachute	KENG	RSV CO	___	244.5 62.8	250.06	39 29 44.0 107 48 22.0	25.000 100	154.0 2122	66.2 Cumulus Licensing Llc	91.09	167.94
269C1 Eagle	KTUN	LIC CO	ZC_	239.1 58.1	161.43 BLH20050915ADE	39 44 18.0 106 47 58.0	12.000 667	6.4 3171	70.1 Nrc Broadcasting Mountain	149.38	91.12
270D Sedalia	KGDQ-FM2	LIC CO	_C_	174.7 354.8	123.62 BLFTB20031020AAB	39 23 06.0 105 02 51.0	0.099	0.7 2355	25.2 Superior Broadcasting Of D	116.12	98.32

CH CITY	CALL	TYPE STATE	ANT	AZI <--	DIST FILE #	LAT LNG	PWR(kW) HAAT(M)	INT(km) COR(M)	PRO(km) LICENSEE	Page # 2 *IN* (Overlap in km)	*OUT*
269C1 Eagle	KTUN	CP CO	_CX	241.4 60.3	164.03 BPH20061002BXC	39 46 32.0 106 51 48.0	10.500 696	5.3 3178	53.7 Nrc Broadcasting Mountain	153.30	110.13
264C Pueblo	KGFT	LIC CO	ZCY	171.9 352.1	196.05 BMLH20010216AAB	38 44 43.0 104 51 39.0	78.000 676	8.5 2930	85.5 Bison Media, Inc	181.12	110.45
267C3 Parachute	KENG	APP CO	NCX	244.0 62.3	250.84 BPH20080402ABB	39 28 35.0 107 48 13.0	3.200 281	132.9 2347	55.9 Cumulus Licensing Llc	112.83	178.60
269D Dillon	KTUN-FM2	CP CO	DV_	217.8 37.2	120.93 BNPFTB20051031ABV	39 37 51.0 106 02 47.0	2.500	0.1 2755	2.5 Nrc Broadcasting Mountain	113.63	118.23

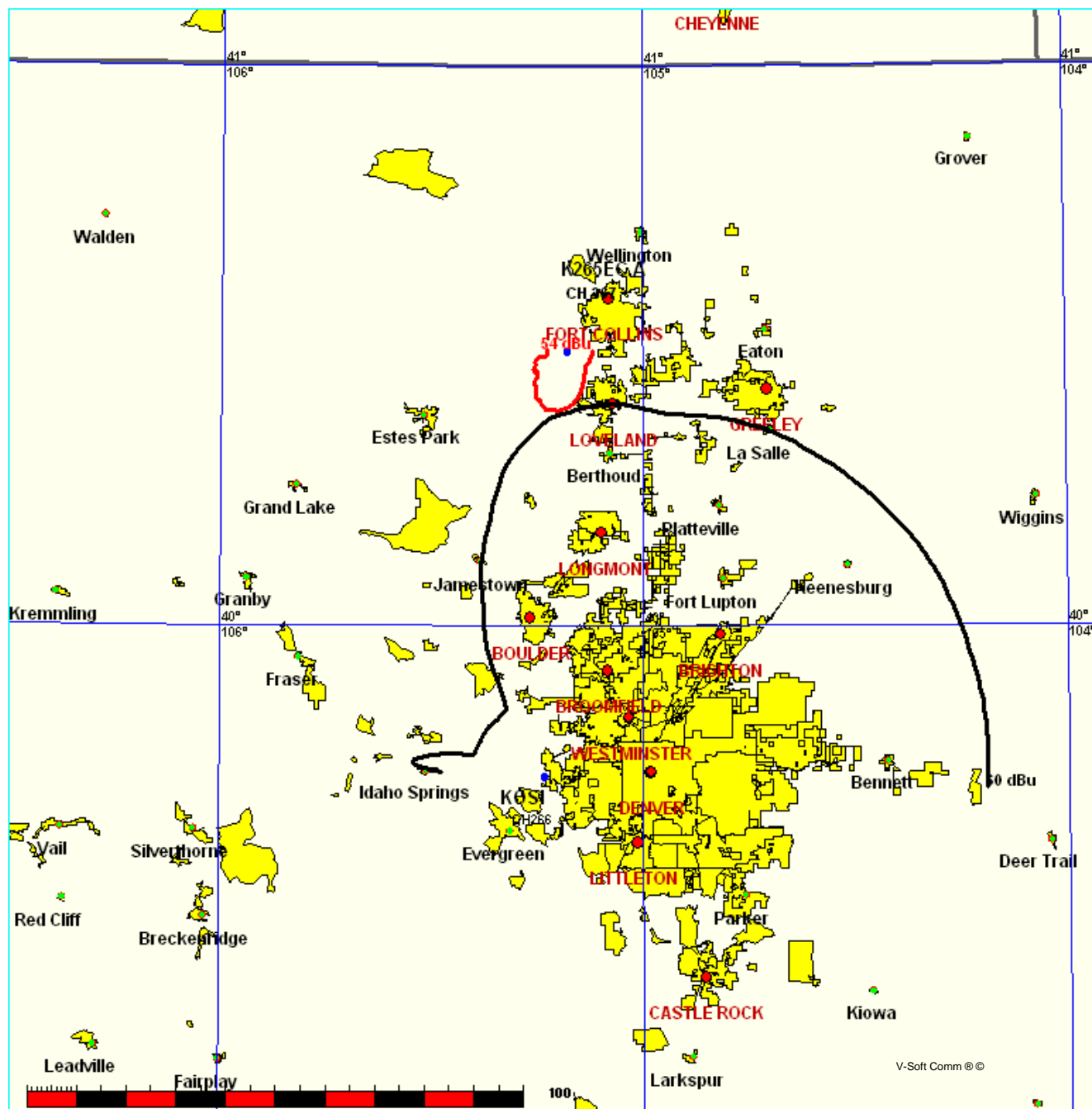
Terrain database is NGDC 30 SEC Distance + R = 73.215 or FCC Spacings in KM, Distance + M = Margin in KM  
 Contour distances are on direct line to and from reference station. Reference zone = 2. With 3rd Adj Channels.  
 Ant Column: (D= DA Standard, Z= DA 73.215, N= Not DA 73.215, \_= Omni), Polarization (C,H,V,E), Beamtilt(Y,N,X)  
 "\*\*affixed to 'IN' or 'OUT' values = site inside protected contour.

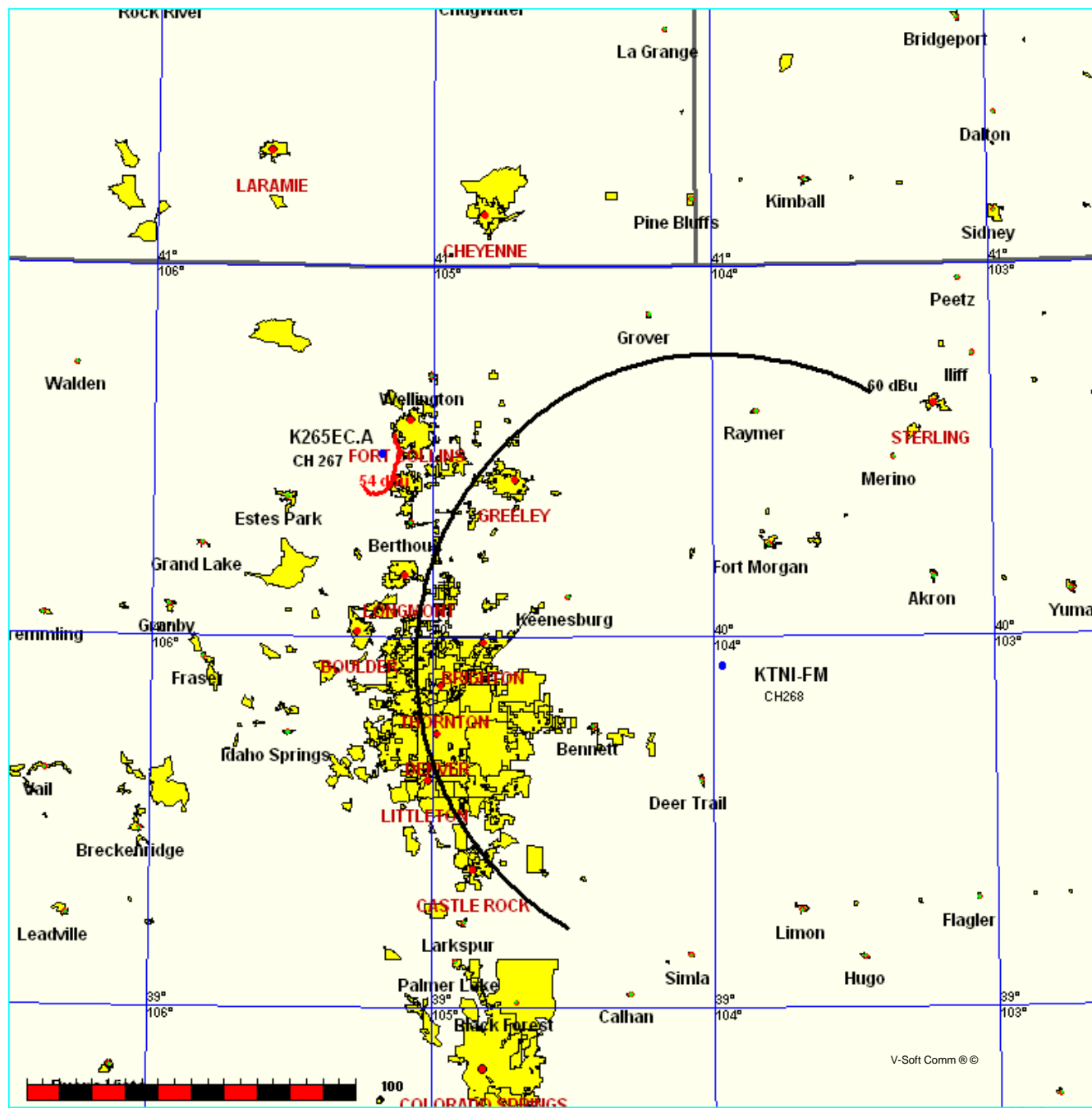
\* Station being amended by this application

EXHIBIT E-1, FIGURE 2, INTERFERENCE STUDY, KOSI CH. 266C  
K265EC ESTES PARK, COLORADO, CHANNEL 267D

FMCommander Single Allocation Study  
04-14-2008

K265EC.A CH 267 D	KOSI CH 266 C	BLH20020118AAJ
0.007 kW 2080 M COR DA	100.0 kW, 2262 M COR DA	
Prot. = 60 dBu	Prot. = 60 dBu	
Intef. = 54 dBu	Intef. = 54 dBu	





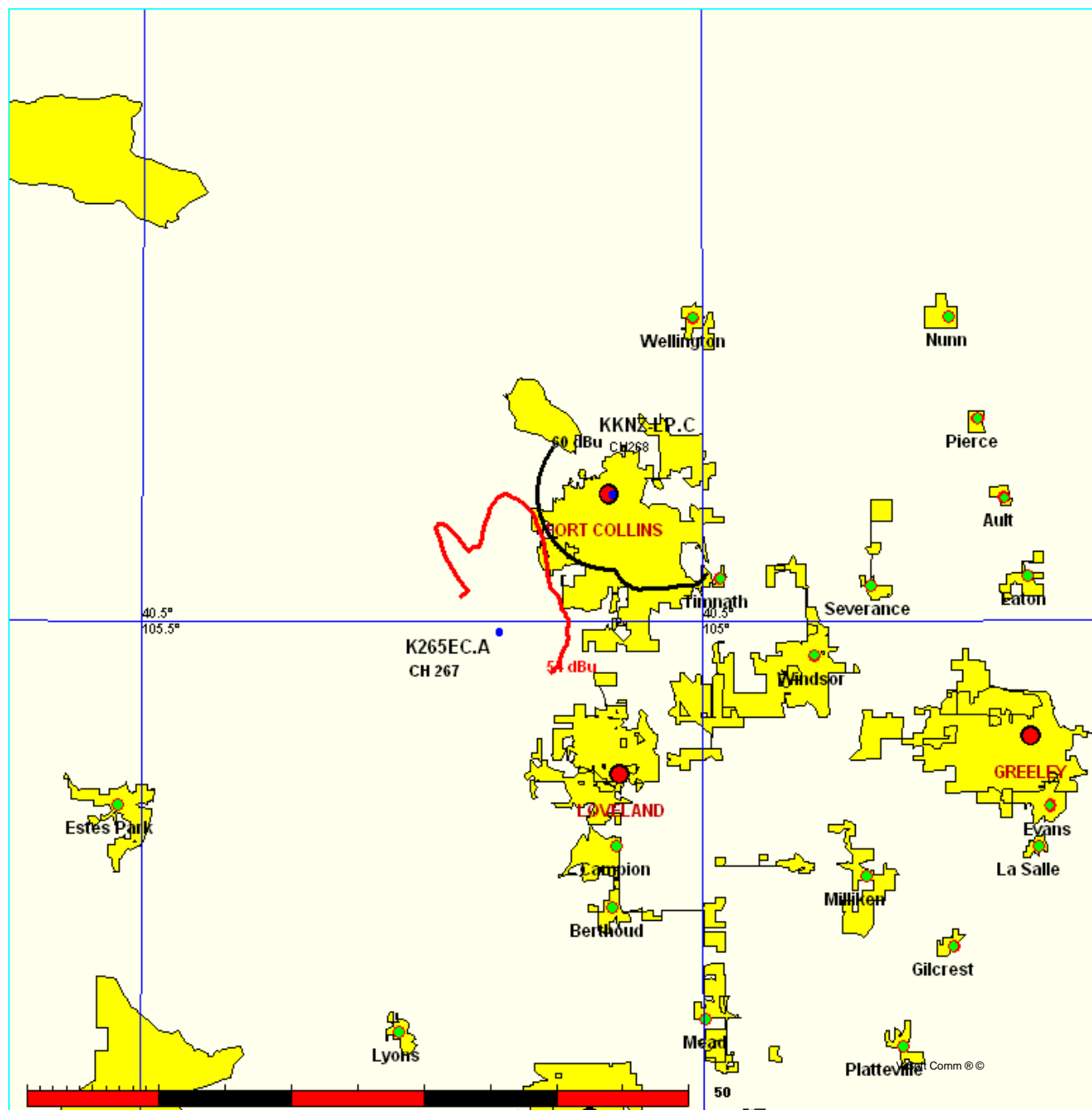


EXHIBIT E-1, FIGURE 5, OVERLAP WITH CURRENT K265EC  
K265EC ESTES PARK, COLORADO, CHANNEL 267D

FMCommander Single Allocation Study  
04-14-2008

K265EC.A CH 267 D	K265EC CH 265 D BLFT20070628ABN
0.007 kW 2080 M COR DA	0.25 kW, 1960 M COR DA
Prot. = 60 dBu	Prot. = 60 dBu
Intef. = 100 dBu	Intef. = 100 dBu

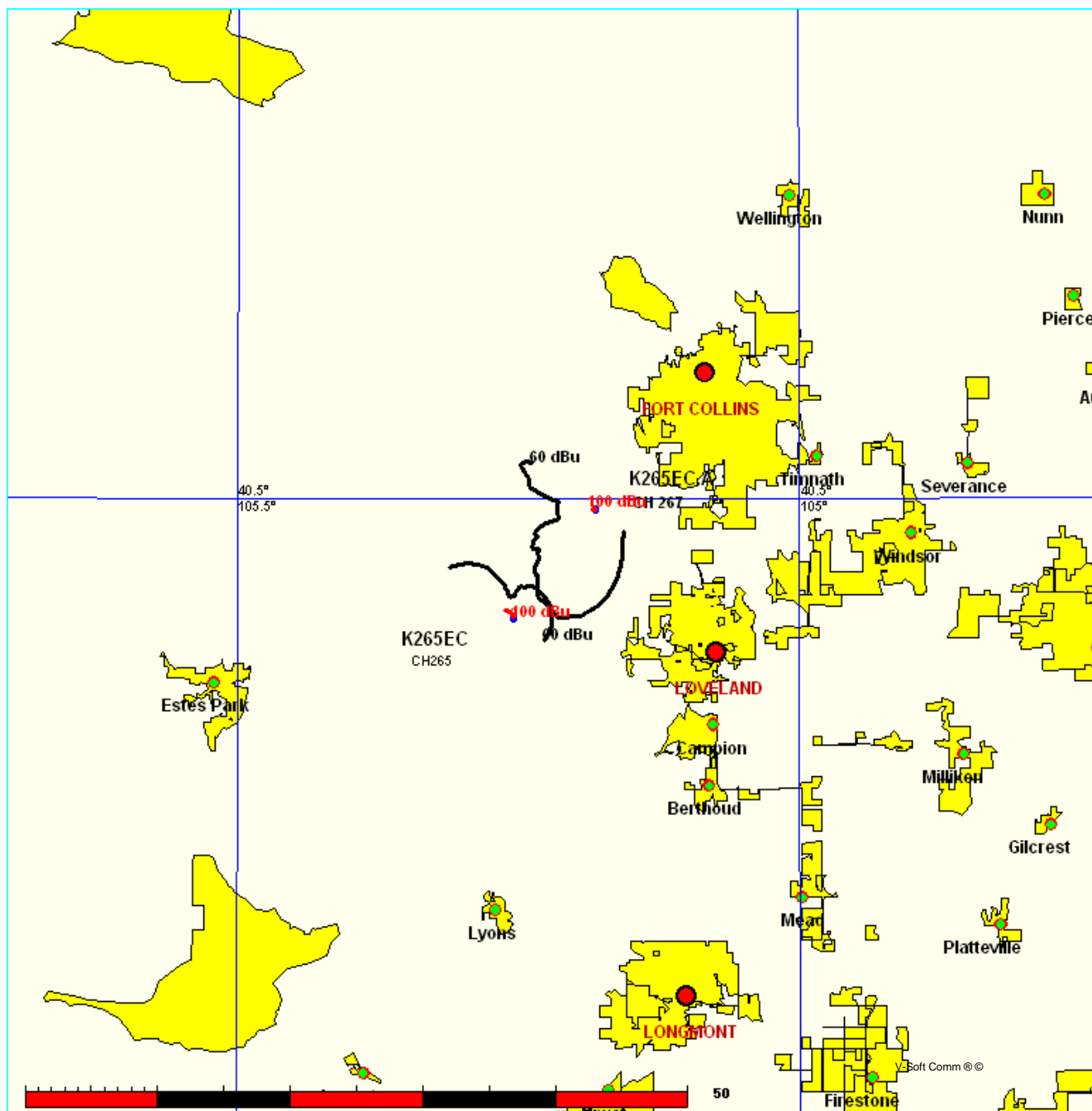
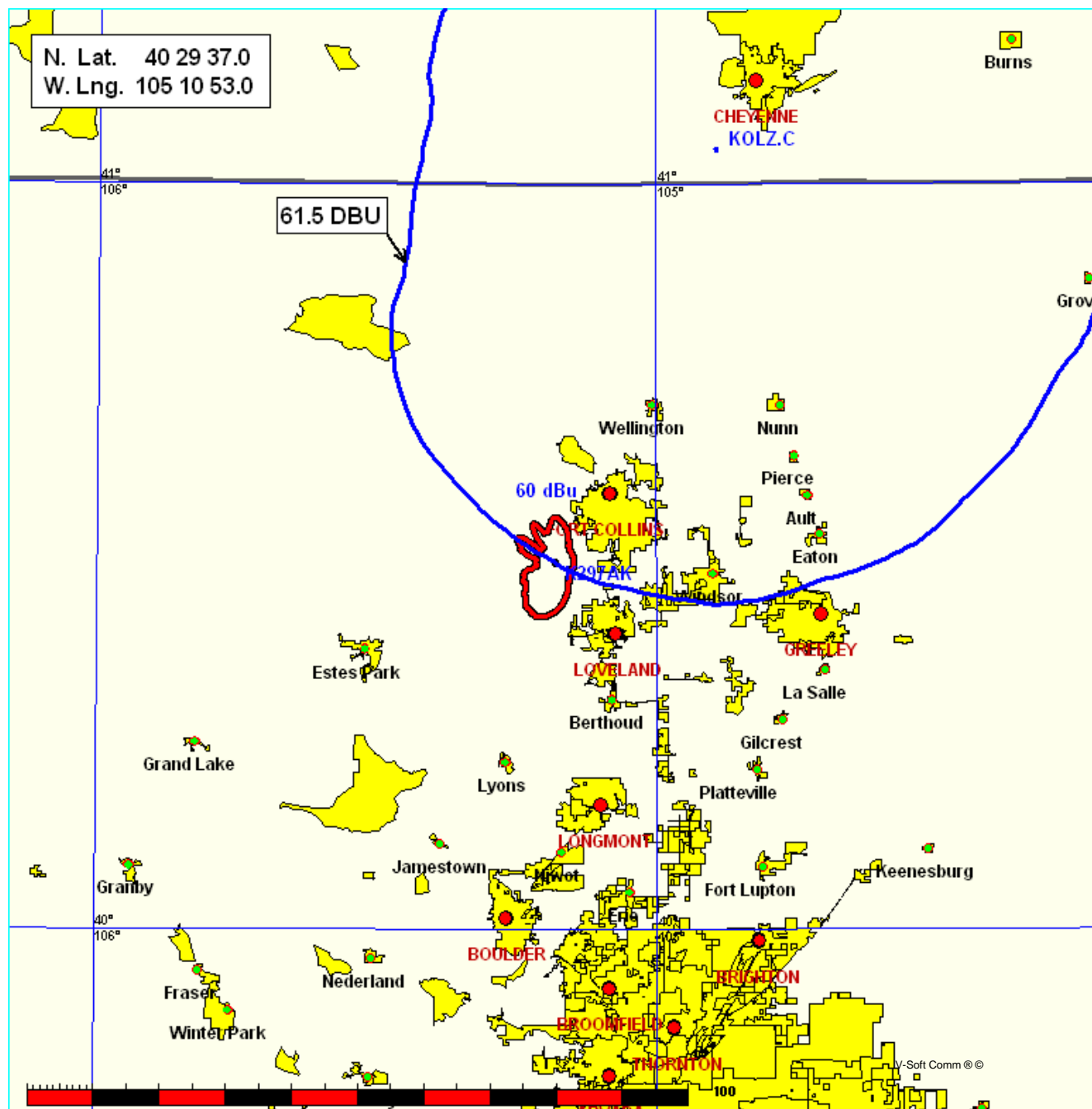




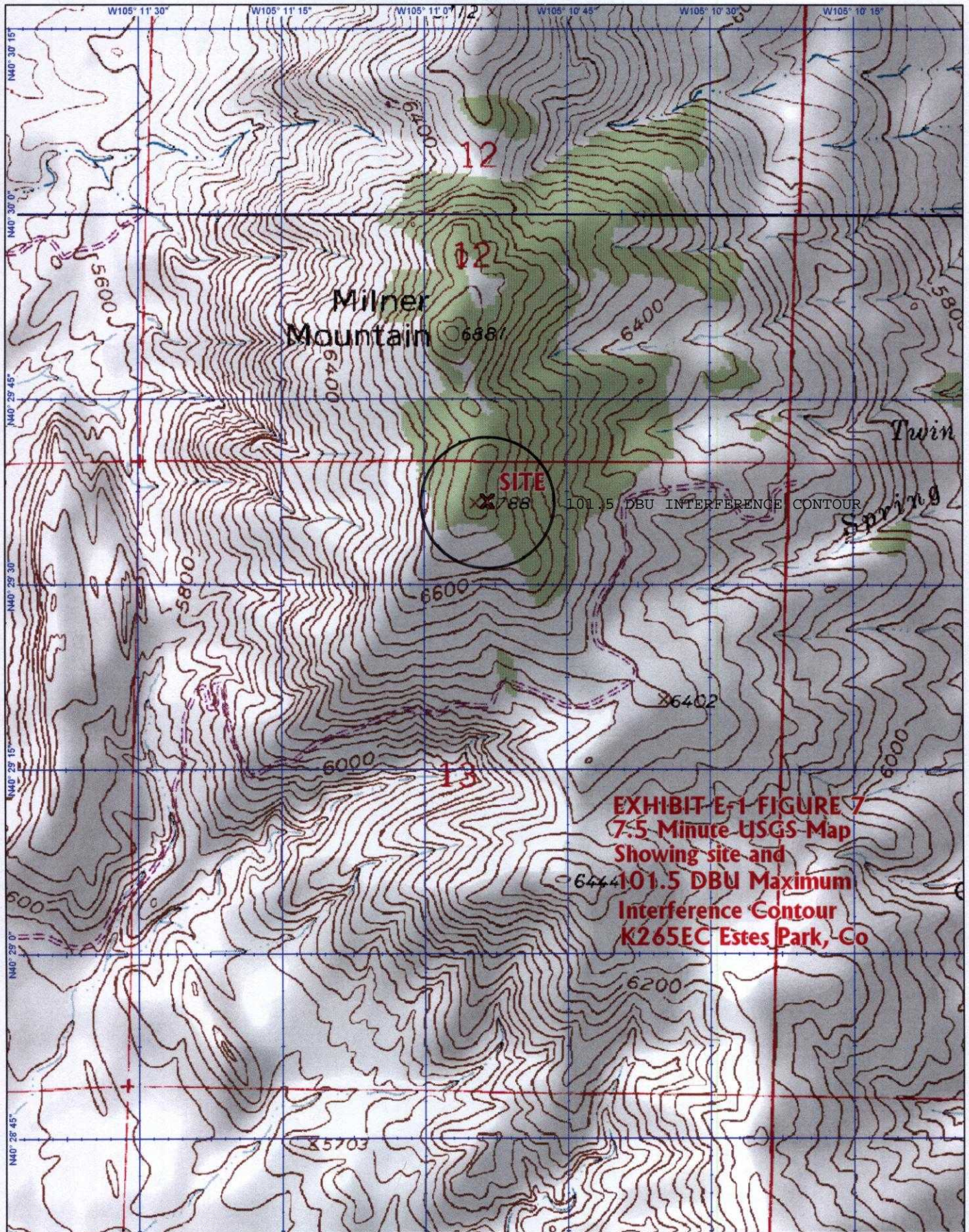
EXHIBIT E-1, FIGURE 6, INTERFERENCE STUDY, KOLZ(CP) 264C1  
K265EC ESTES PARK, COLORADO, CHANNEL 267D

Coverage Study  
03-27-2008

KOLZ-C CH264 C1 100.0 kW 2103M COR  
Prot. = 60 dBu. Population = 265,441





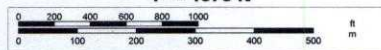


**EXHIBIT E-1 FIGURE 7**  
**7.5 Minute USGS Map**  
**Showing site and**  
**101.5 DBU Maximum**  
**Interference Contour**  
**K265EC Estes Park, Co**



© 2002 DeLorme. 3-D TopoQuads ®. Data copyright of content owner.  
www.delorme.com

Scale 1 : 12,800  
1" = 1070 ft





Contour.out

N. Lat. = 402937.0 W. Lng. = 1051053.0  
HAAT and Distance to Contour - FCC Method - NGDC 30 SEC

EXHIBIT E-1, FIGURE 8, DISTANCE TO CONTOURS, K265EC

Azi.	AV EL	HAAT	dBk	60-F5	54-F1	101.5-F1
000	1752.0	328.0	-26.85	6.58	10.03	0.08
010	1663.2	416.8	-28.88	5.99	9.77	0.07
020	1616.9	463.1	-31.34	5.04	8.40	0.05
030	1583.7	496.3	-33.94	3.96	6.83	0.04
040	1572.5	507.5	-36.30	3.11	5.61	0.03
050	1562.1	517.9	-37.58	2.74	5.01	0.02
060	1553.3	526.7	-37.31	2.82	5.16	0.03
070	1544.0	536.0	-37.63	2.73	5.01	0.02
080	1537.7	542.3	-37.20	2.86	5.24	0.03
090	1537.1	542.9	-37.41	2.80	5.14	0.03
100	1549.8	530.2	-37.20	2.85	5.22	0.03
110	1563.4	516.6	-37.63	2.73	4.99	0.02
120	1568.1	511.9	-37.31	2.81	5.13	0.03
130	1569.9	510.1	-37.58	2.74	5.00	0.02
140	1577.4	502.6	-36.30	3.11	5.60	0.03
150	1594.3	485.7	-33.94	3.96	6.78	0.04
160	1610.4	469.6	-31.34	5.05	8.44	0.05
170	1596.8	483.2	-28.88	6.24	10.26	0.07
180	1622.9	457.1	-26.85	7.32	11.58	0.08
190	1660.6	419.4	-25.34	8.12	12.27	0.10
200	1698.3	381.7	-24.25	8.54	12.57	0.11
210	1798.3	281.7	-23.40	7.91	11.40	0.13
220	1890.8	189.2	-22.64	6.80	9.78	0.14
230	1961.0	119.0	-22.21	5.61	7.87	0.14
240	1967.7	112.3	-21.94	5.55	7.77	0.15
250	1995.0	85.0	-21.74	4.85	6.81	0.15
260	2122.8	-42.8	-21.64	2.88	4.03	0.15
270	2152.7	-72.7	-21.55	2.89	4.05	0.16
280	2062.6	17.4	-21.64	2.88	4.03	0.15
290	1975.3	104.7	-21.74	5.42	7.58	0.15
300	1921.0	159.0	-21.94	6.53	9.30	0.15
310	2079.1	0.9	-22.21	2.80	3.91	0.14
320	2076.7	3.3	-22.64	2.73	3.82	0.14
330	1896.4	183.6	-23.40	6.41	9.22	0.13
340	1981.4	98.6	-24.25	4.49	6.41	0.11
350	1929.5	150.5	-25.34	5.18	7.38	0.10

Ave EI = 1759.58 M HAAT= 320.42 M AMSL= 2080

EXHIBIT E-1, FIGURE 9, DIRECTIONAL ANTENNA DATA

03-28-2008

RMS(V) = .64

Bearing    Field % Voltage

Graph is Percent Relative Field Voltage

Nicom BLD-1/P

000	=	0.543
010	=	0.430
020	=	0.324
030	=	0.240
040	=	0.183
050	=	0.158
060	=	0.163
070	=	0.157
080	=	0.165
090	=	0.161
100	=	0.165
110	=	0.157
120	=	0.163
130	=	0.158
140	=	0.183
150	=	0.240
160	=	0.324
170	=	0.430
180	=	0.543
190	=	0.646
200	=	0.733
210	=	0.808
220	=	0.882
230	=	0.927
240	=	0.956
250	=	0.978
260	=	0.990
270	=	1.000
280	=	0.990
290	=	0.978
300	=	0.956
310	=	0.927
320	=	0.882
330	=	0.808
340	=	0.733
350	=	0.646

