

submitted by New Life Media. Further, the APE for direct effects is the construction site for the proposed tower facility, where such construction would result in ground-disturbance and dislocation of soil. The APE for direct effects is the 65' x 22' (19.8 x 6.7 m) tower compound area, the proposed 15' x 165' (4.6 x 50.3 m) access easement, and a proposed 5' x 120' (1.5 x 36.6 m) long utility easement (see Figure 3).

The APE for direct effects is located in a fallow agricultural field located at the top of a small rise. Archaeological fieldwork, performed primarily to determine the presence of previously unrecorded historic resources within the APE for direct effects, was conducted under the direction of Virginia Janssen on November 22, 2010.

3. Results

A review of records held by the Illinois State Museum, and a review of the Illinois Historic Preservation Agency's online Historic Architecture and Archaeological Resources Geographic Information System (HAARGIS) indicate no previously documented historic properties are located within one-half mile of the proposed undertaking. Therefore, no additional assessment of the APE for visual effects was warranted.

Both surface inspection and the excavation of subsurface tests were used to investigate the potential for unrecorded historic resources within the APE for direct effects (Figure 3). A single pedestrian transect was used to investigate each of the two proposed easements. Three pedestrian transects, spaced approximately 4 m apart, were utilized to investigate exposed surfaces within the tower compound area. A representative view of the ground surface exposure within the APE for direct effects is presented in Photograph 8.

Ten 30 x 30 cm subsurface tests were used to examine the APE for direct effects. Soils from these tests were dry-screened through 6 mm hardware cloth. Three shovel tests, spaced approximately 7 m apart were used to examine the tower compound area. Four shovel tests, spaced approximately 10 m apart, were used to examine the proposed access drive. Finally, three shovel tests, also spaced approximately 10 m apart, were used to examine the proposed utility easement. The same soil profile was encountered in all ten shovel tests exhibiting 0-20 cm of yellowish brown (Munsell 10YR 5/4) silty clay loam over 30 cm of brown (7.5YR 5/3) silty clay.

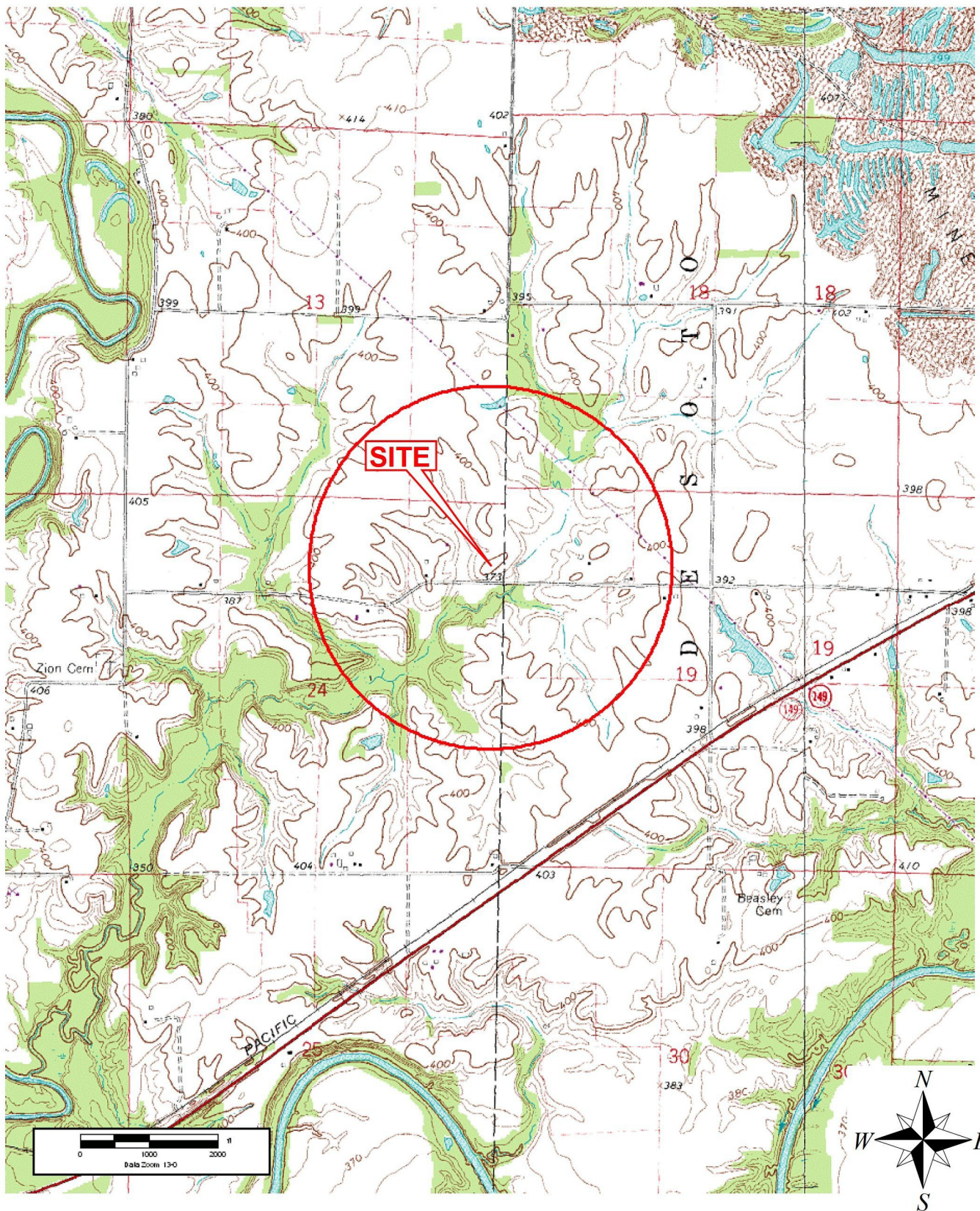
No archaeological features were noted on the surface, and no cultural material indicative of an archaeological site was recovered from the subsurface shovel tests. Therefore, it is the opinion of the principal investigator that no NRHP-eligible archaeological site will be affected by this undertaking.

4. Recommendations

A review of records held by the Illinois State Museum, and a review of the Illinois Historic Preservation Agency's online Historic Architecture and Archaeological Resources Geographic Information System (HAARGIS) indicate no previously documented historic properties are located within one-half mile of the proposed undertaking. As such, no additional assessment of the APE for visual effects is recommended as part of this investigation.

Archaeological investigations of the APE for direct effects did not encounter archaeological features were noted on the surface, and no cultural material indicative of an archaeological site was recovered from the subsurface shovel tests. Therefore, it is the opinion of the principal investigator that no NRHP-eligible archaeological site will be affected by this undertaking.

Nevertheless, it should be noted that ground disturbing activity should be halted when it is reasonable to believe that an archaeological site has been encountered which will be affected by this undertaking, and that the State Historic Preservation Office be notified of these finds. Also, if human burials or human remains are encountered during ground disturbance, it is imperative that local law enforcement, as well as the district medical examiner and the State Historic Preservation Office, is notified prior to resuming work.



U.S.G.S. Topographic Map - Murphysboro IL Quadrangle - 1/2 Mile Visual APE



**DYNAMIC
ENVIRONMENTAL
ASSOCIATES, INC.**

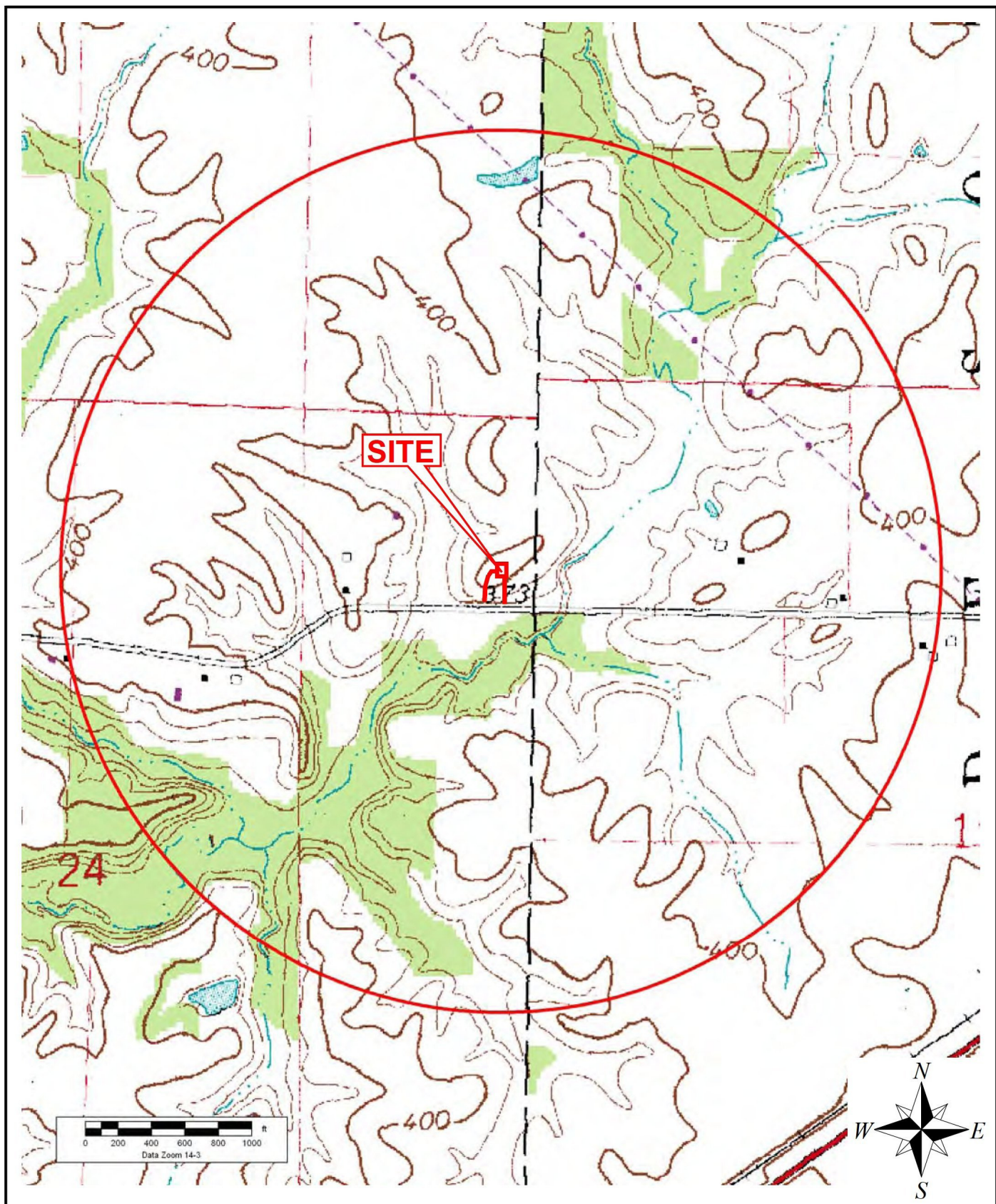
www.DynamicEnvironmental.com

Section 106 Assessment
WIBI Murphysboro Tower Site
Jackson County, Illinois

Figure No.: 4

Date: 12/17/10

DEA No.: 21011002



U.S.G.S. Topographic Map - Murphysboro IL Quadrangle - 1/2 mile APE



**DYNAMIC
ENVIRONMENTAL
ASSOCIATES, INC.**

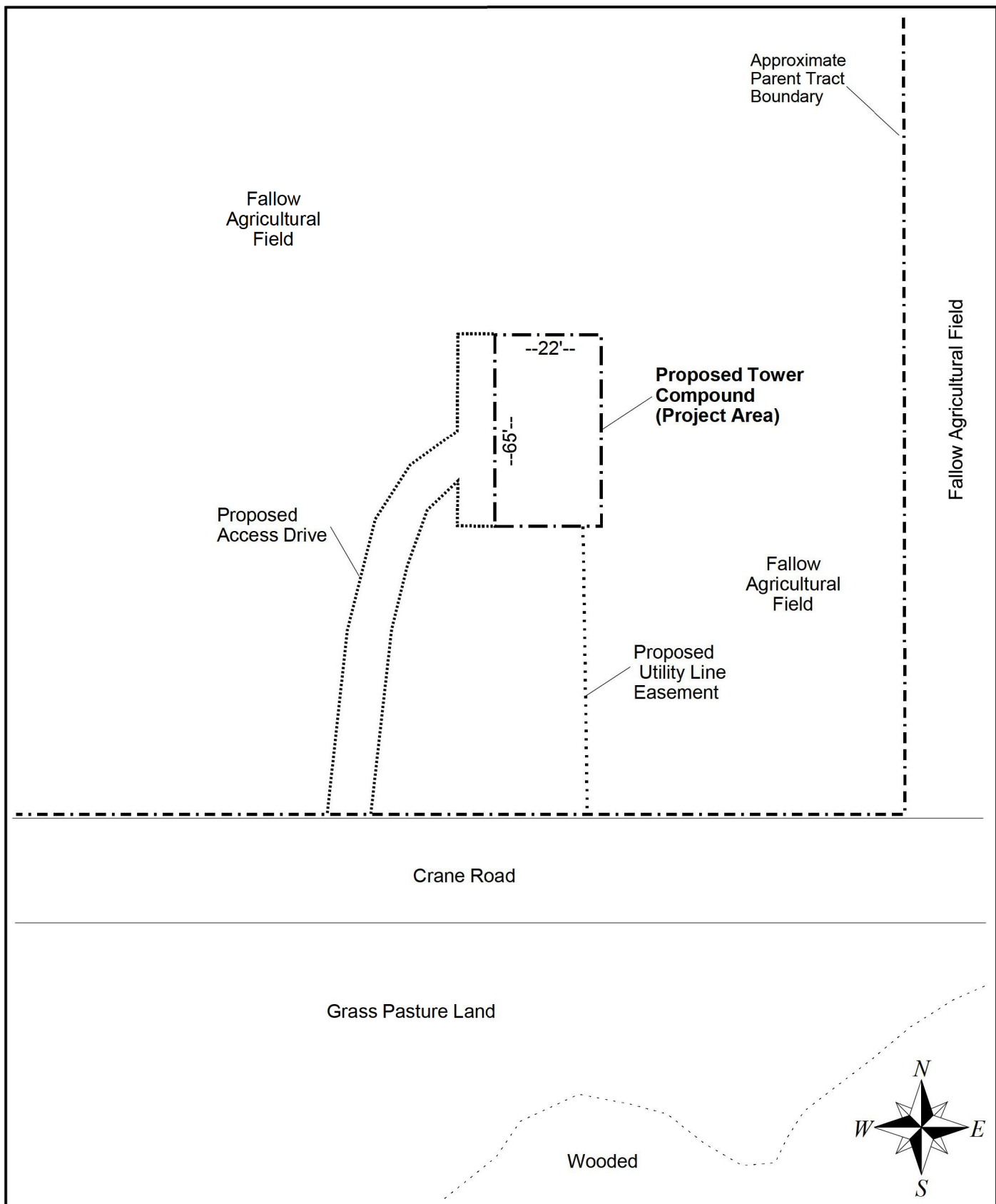
www.DynamicEnvironmental.com

Section 106 Assessment
Murphysboro Tower Site
Jackson County, Illinois

Figure No.: 5

Date: 12/17/10

DEA No.: 21011002



SITE PLAN



**DYNAMIC
ENVIRONMENTAL
ASSOCIATES, INC.**

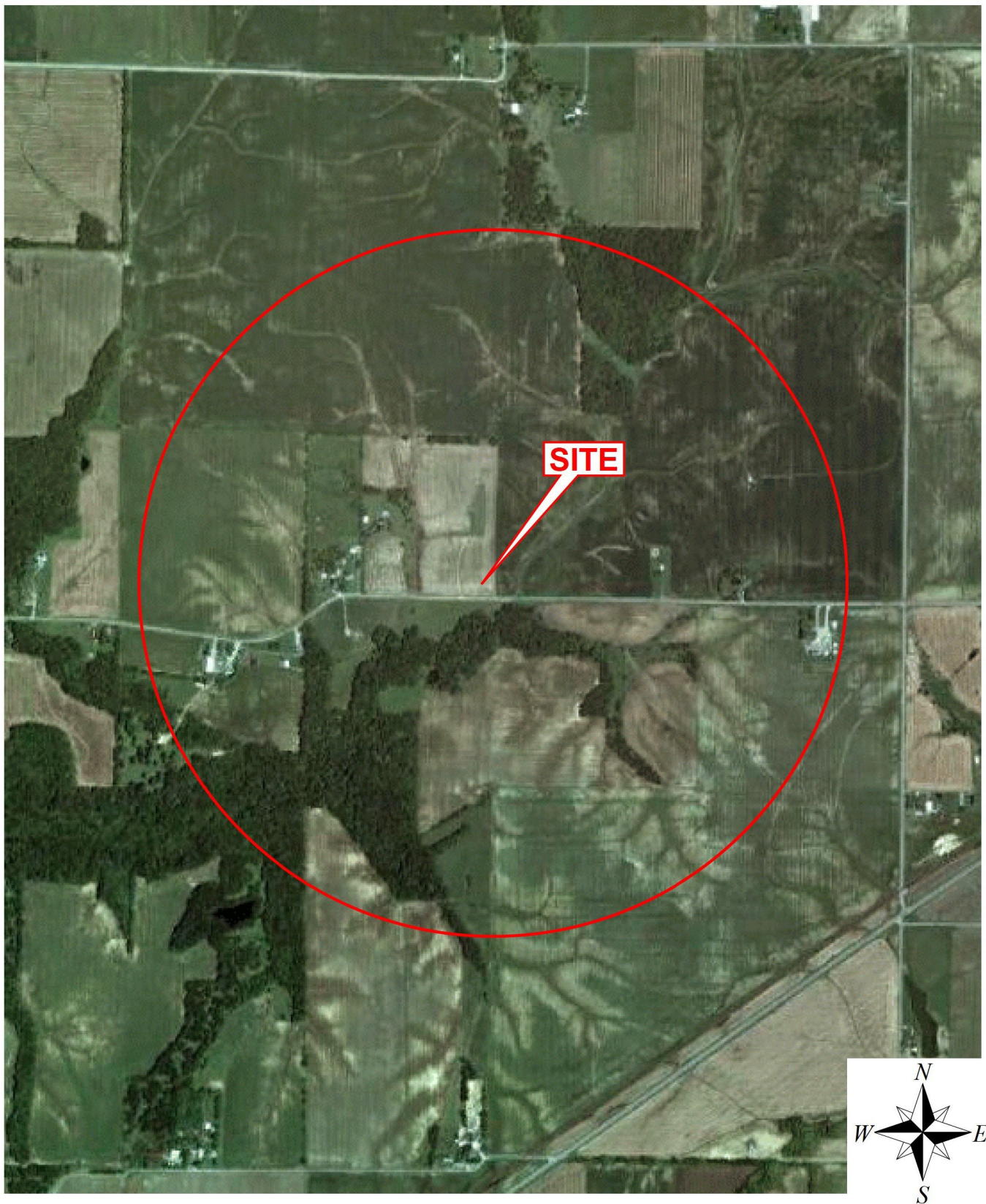
www.DynamicEnvironmental.com

Section 106 Review
WIBI Murphysboro Tower Site
Jackson County, Illinois

Figure No.: 2

Date: 12/17/10

DEA No.: 21011002



2004 Aerial Photograph w/ 1/2 Mile Visual APE



**DYNAMIC
ENVIRONMENTAL
ASSOCIATES, INC.**

www.DynamicEnvironmental.com

Section 106 Assessment
WIBI Murphysboro Tower Site
Jackson County, Illinois

Figure No.: 6

Date: 12/17/10

DEA No.: 21011002

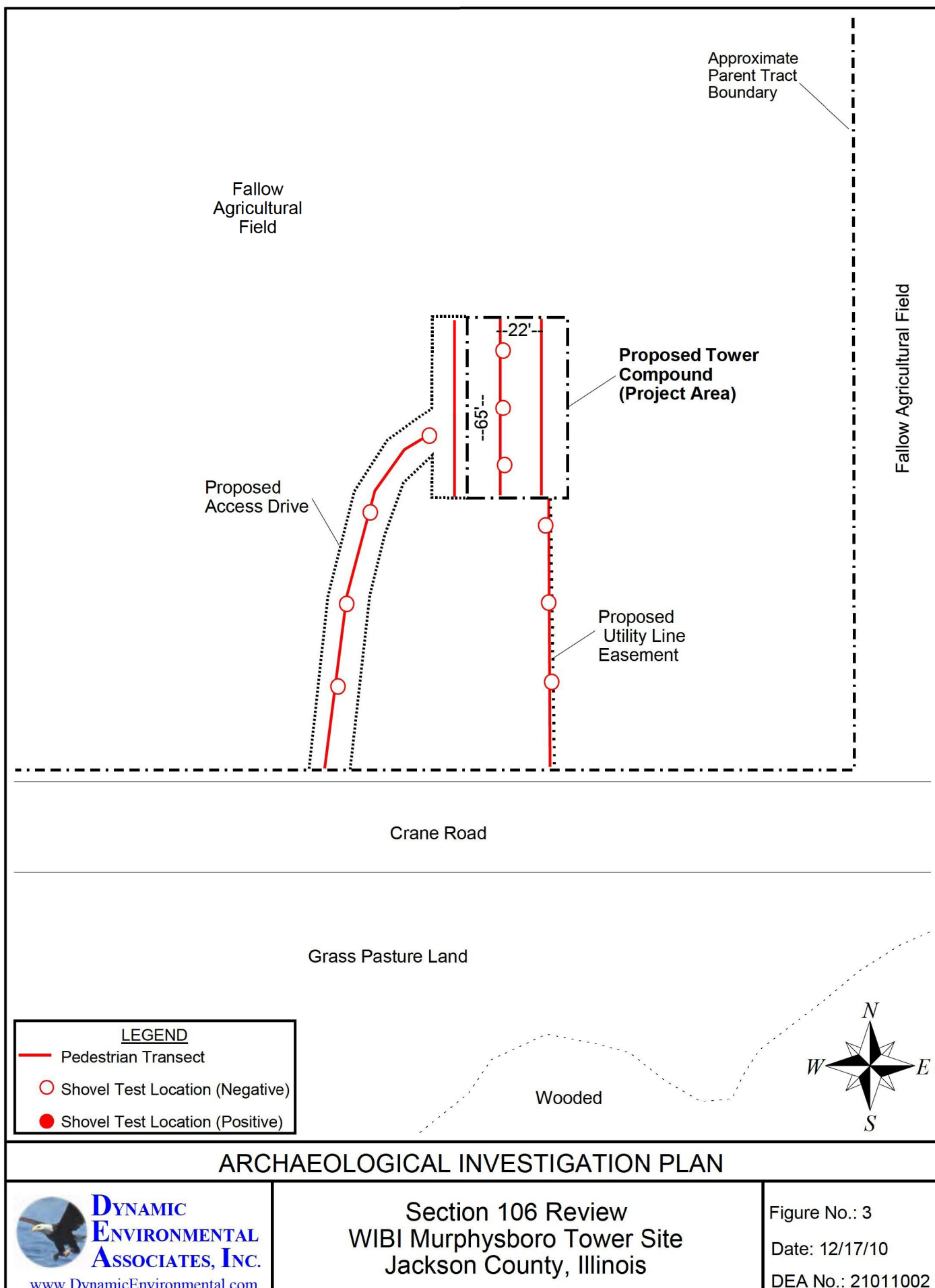




Photo 1 - View of the proposed tower location, facing north.



Photo 2 - View of the proposed tower location, facing south.



Photo 3 - View of the proposed tower location, facing east.



Photo 4 - View of the proposed tower location, facing west.



Photo 5 - View of the proposed access easement from the proposed tower compound, facing south.



Photo 6 - View of the proposed access easement from Crane Road, facing north.