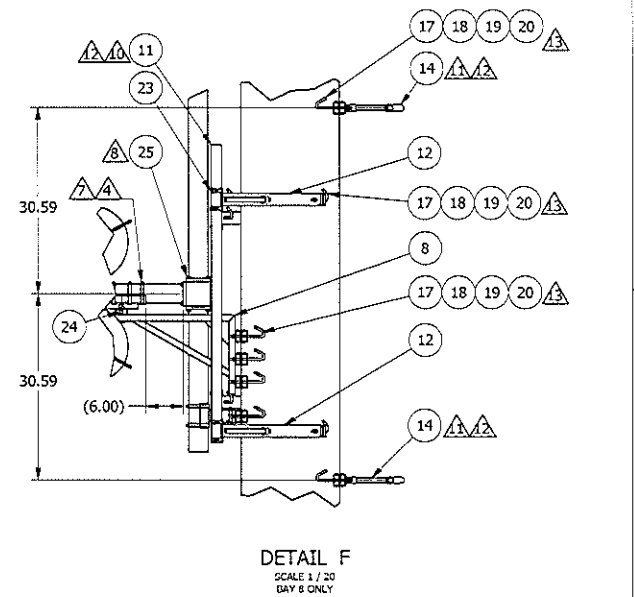
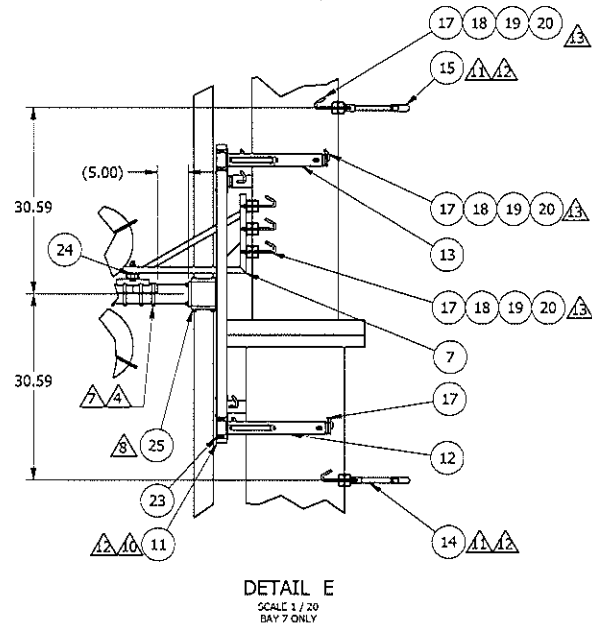
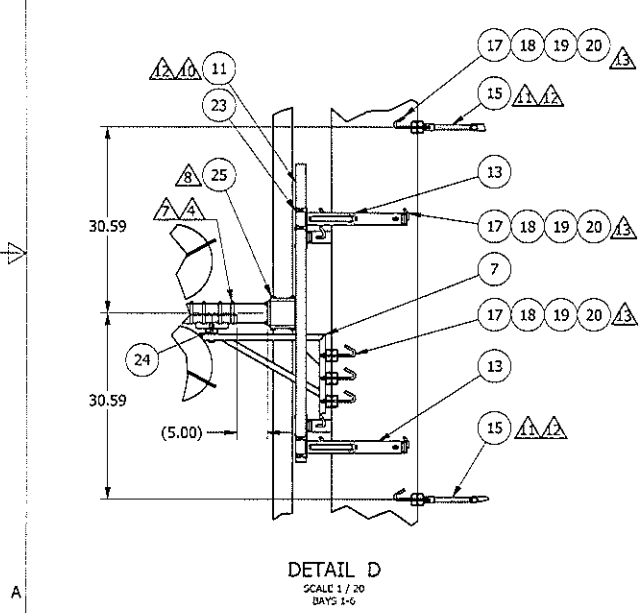
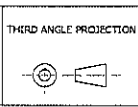


REVISION HISTORY			
REV	DESCRIPTION	DATE	APPROVED
A	ADDED BAY TO POLE DIMENSIONS (CSL)	2/10/2012	G.H./L.S.



This document/drawing contains information considered confidential by Electronics Research, Inc. (ERI). This information is disclosed on a confidential basis and only authorized for use in the installation, operation, and maintenance of ERI tower and antenna equipment, as appropriate. Reproduction, transmission or disclosure to others, or unauthorized use, without the express written consent of ERI, is strictly prohibited. UNAUTHORIZED DUPLICATION, REPRODUCTION, OR DISCLOSURE OF THIS INFORMATION IS A VIOLATION OF FEDERAL LAW. COPYRIGHT 2012 ERI, ELECTRONICS RESEARCH INC.



MATERIAL

FINISH

**TOLERANCES**  
OVERALL-NOT CUMULATIVE  
UNLESS OTHERWISE SPECIFIED,  
ALL DIMENSIONS ARE IN INCHES  
AND APPLICABLE AT 20°C (68°F)  
INTERPRET DIMENSIONS AND TOLERANCES  
HERE FOR YOUNG 1004

1 PLACE DECIMAL ± .1  
2 PLACE DECIMAL ± .03  
3 PLACE DECIMAL ± .010  
ANGULAR ± .2°  
FRACTIONAL ± 1/16"

PROJECT NO.	29114/1	
ERI APPROVAL	NAME	DATE
DRAWN BY	C.S.L.	1/27/2012
DRAFTING	L.A.S.	1/30/2012
DESIGN MGR.	G.H.	1/30/2012
ENG.		
MANUF.		
EXT. APPROVAL	T.SCHARF	1/30/2012
SUPPLIER'S PART NO.		
FILE NAME:	IA29114-1.dwg	

**ELECTRONICS RESEARCH INC.**  
ESTABLISHED 1943  
 7777 GARDNER RD.  
 CHANDLER, IN  
 46610-9219  
 PHONE: (317) 925-6000  
 FAX: (317) 925-4030

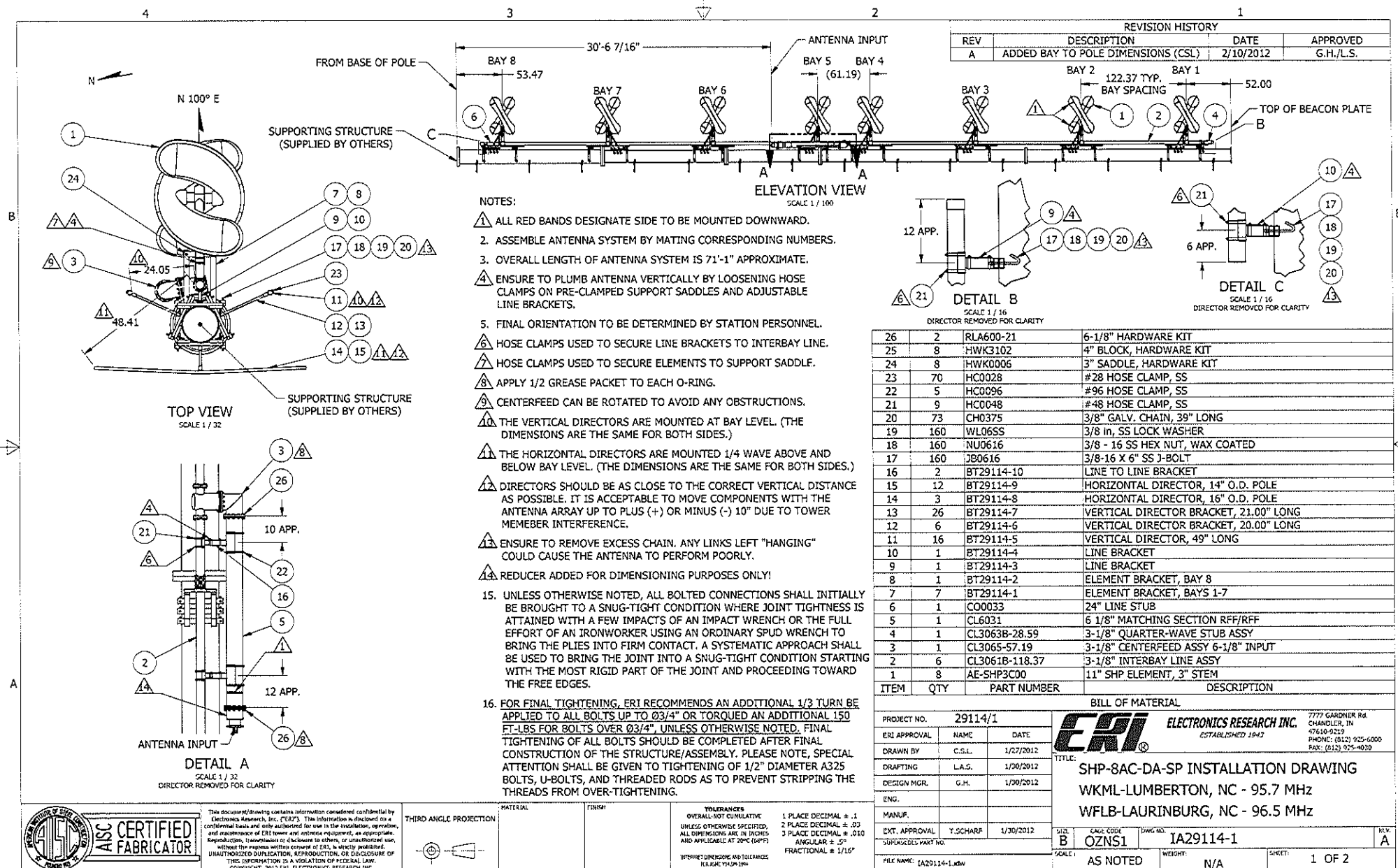
**TITLE:**  
 SHP-8AC-DA-SP INSTALLATION DRAWING  
 WKML-LUMBERTON, NC - 95.7 MHz  
 WFLB-LAURINBURG, NC - 96.5 MHz

SCALE: B	SCALE: OZNS1	DWG NO. IA29114-1	REV. A
SCALE: AS NOTED	WEIGHT: N/A	SHEET: 2 OF 2	

3

2

1



This document/drawing contains information considered confidential by Electronics Research, Inc. (ERI). This information is disclosed on a confidential basis and only authorized for use in the installation, operation, and maintenance of ERI tower and antenna equipment, as appropriate. Reproduction, transmission or disclosure to others, or unauthorized use, without the express written consent of ERI, is strictly prohibited. UNAUTHORIZED DUPLICATION, REPRODUCTION, OR DISCLOSURE OF THIS INFORMATION IS A VIOLATION OF FEDERAL LAW. COPYRIGHT 2012 ERI, ELECTRONICS RESEARCH INC.

