

The Scala HDCA-5CP/CM and HDCA-5CP/RM are ruggedly built yagi antennas, designed for professional VHF-TV transmit and receive applications.

Like all Scala antennas, the HDCA-5CP's are made of the finest materials resulting in superior performance and long service life.

The HDCA-5CP's may be used stand-alone or in stacked arrays for higher gain, increased side-lobe suppression, or custom azimuth patterns.

Specifications:

Frequency range	Any specified VHF-TV channel 54 to 88 MHz or 174 to 216 MHz	
Gain	Gain	Power gain
	Channels 2–3	3.7 dBd 2.34
	Channels 4–6	4.5 dBd 2.82
	Channels 7–13	5 dBd 3.16
Impedance	50 or 75 ohms	
VSWR	< 1.5:1	
Polarization	Circular	
Front-to-back ratio	> 16.8 dB	
Maximum input power	250 watts 50Ω	
	100 watts 75Ω	
Azimuth pattern	63 degrees (half-power)	
Elevation pattern	63 degrees (half-power)	
Connector	50Ω N or 75Ω N female	
Weight	38 lb (17.2 kg)	
Dimensions	107 x 106.5 inches maximum (2718 x 2705 mm)	
Equivalent flat plate area	4.27 ft ² (0.397 m ²) maximum	
Wind survival rating*	100 mph (160 kph)	
Shipping dimensions	125 x 10 x 6 inches maximum (3175 x 254 x 152 mm)	
Shipping weight	46 lb (20.9 kg) maximum	
Mounting	For masts of 2.375 inches (60 mm) OD.	
	HDCA-5CP/CM	Center-mount (channels 2–6)
	HDCA-5CP/RM	Rear-mount (channels 2–6 and 7–13)

* Mechanical design is based on environmental conditions as stipulated in EIA-222-F (June 1996) and/or ETS 300 019-1-4 which include the static mechanical load imposed on an antenna by wind at maximum velocity. See the Engineering Section of the catalog for further details.

Order Information:

Contact Scala Customer Service for detailed order information.

HDCA-5CP/CM

HDCA-5CP/RM

VHF-TV YAGI ANTENNA

3.7 to 5 dBd gain

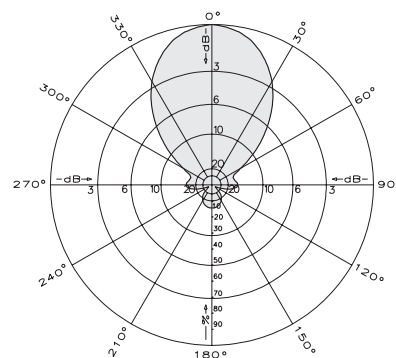
54 to 88 MHz (Channels 2 to 6)

174 to 216 MHz (Channels 7 to 13)

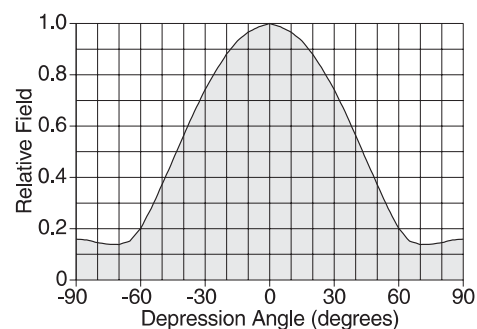
Circularly polarized



HDCA-5CP/RM



Azimuth pattern (typical)



Elevation pattern (typical)



10745-B

HDCA-5CP/CM

HDCA-5CP/RM

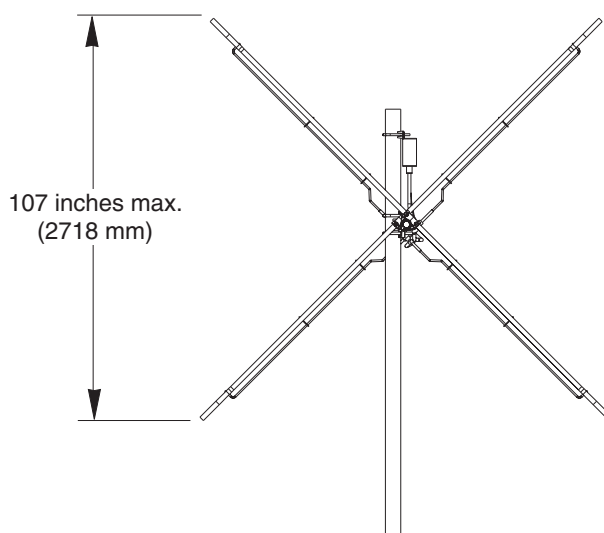
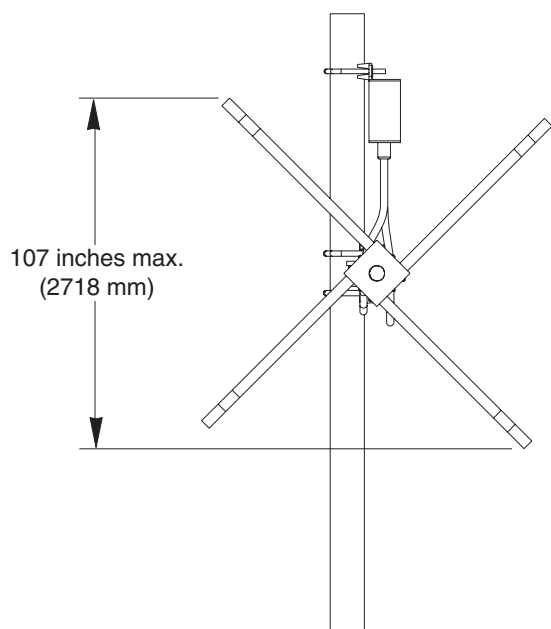
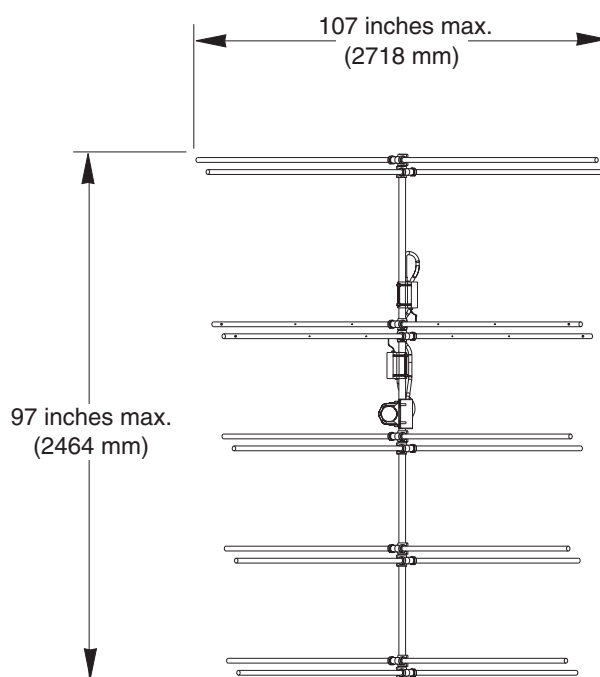
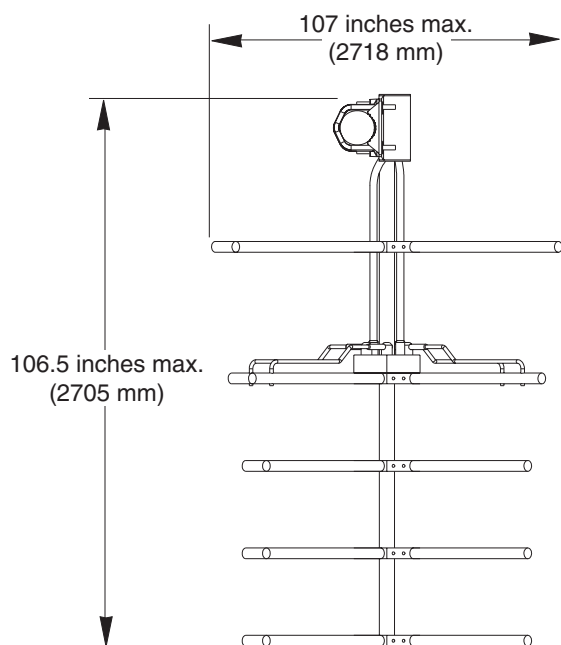
VHF-TV YAGI ANTENNA

3.7 to 5 dBd gain

54 to 88 MHz (Channels 2 to 6)

174 to 216 MHz (Channels 7 to 13)

Circularly polarized



Order Information:

Contact Scala Customer Service for detailed order information.

All specifications are subject to change without notice

Kathrein Inc., Scala Division Post Office Box 4580 Medford, OR 97501 (USA) Phone: (541) 779-6500 Fax: (541) 779-6575
Email: broadcast@kathrein.com Internet: www.kathrein-scala.com