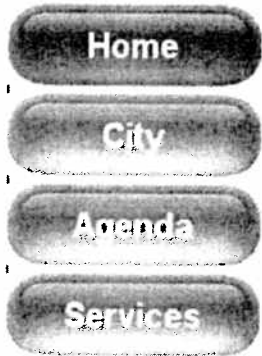


Attachment A

New Deal Texas

Home of the Mighty Lions



Welcome to New Deal Texas

New Deal is located just seven miles north of the Lubbock airport, off of I-27.

New Deal is a small town with a big heart. Created as Monroe in 1909 when the railroad came through from Plainview to Lubbock. The Town was later renamed after Franklin D. Roosevelt's program in June of 1949.

[History of New Deal](#)

[Detailed Profile](#)

[Timbo's Restaurant](#)

[Mighty Lions and Lady Lions](#)

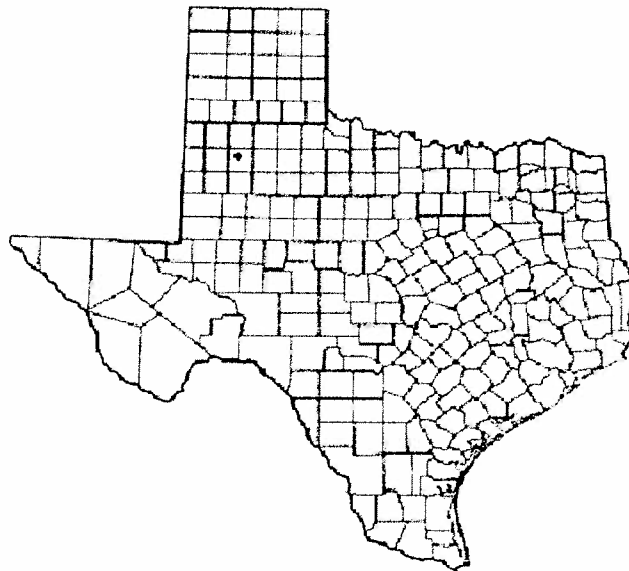


[Local Weather](#)



Local News Stations

**KCBD, KLBK, Fox34,
KAMC**



-



Renew your Driver License
or Vehicle Registration,
pay tickets or taxes,
and MUCH MORE!



◀ **Get Directions** ▶

Enter starting street address:

City, State or Zipcode:

Show me the way

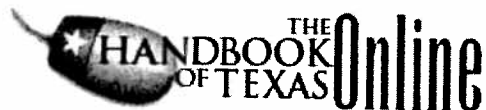
YAHOO! MAPS

Your name:

Your email address:

Your phone number:

[Home](#) [City](#) [City Agenda](#) [Services](#)

[ABOUT](#)[SEARCH](#)[BROWSE](#)[HELP](#)[CONTRIBUTE](#)[BOOKSTORE](#)[TEACHING TOOLS](#)[FEEDBACK](#)[CREDITS](#)[MULTIMEDIA](#)[NEWS](#)[format this article to print](#)

NEW DEAL, TEXAS. New Deal is on Interstate Highway 27, Farm Road 1729, and the Santa Fe Railroad, eleven miles north of Lubbock in northern Lubbock County. The town began when the railroad track was laid from Plainview to Lubbock in 1909. The settlement was originally named for Monroe G. Abernathy, a promoter of the Santa Fe line. Monroe never grew into a large settlement. A school was built in 1917, although only one house was reported in the community in 1918. By the late 1920s, however, the town had prospered enough to have a general store, a blacksmith shop, cotton gins, a cafe, and a lumberyard. A permanent depot, built in 1928, was officially opened the next year. In 1935 the four rural schools of Caldwell, Center, Grovesville, and Monroe combined to form a new school district, renamed New Deal after Franklin D. Roosevelt's programs. When a post office was established in June 1949 the town was also renamed New Deal. The population was 125 in 1940. Business establishments included a gin, a grain house, and a branch library. In 1970, when the town of New Deal incorporated, the population was reported at 500. By 1980 the town had grown to 637. Businesses included gins, onion-packing sheds, grocery stores, and a cafe, and a regional headquarters for Northrup King Seed Company was located there.

BIBLIOGRAPHY: Mary Louise McDonald, *The History of Lubbock County* (M.A. thesis, University of Texas, 1942). Kathleen E. and Clifton R. St. Clair, eds., *Little Towns of Texas* (Jacksonville, Texas: Jayroe Graphic Arts, 1982). Fred Tarpley, *1001 Texas Place Names* (Austin: University of Texas Press, 1980).

Charles G. Davis

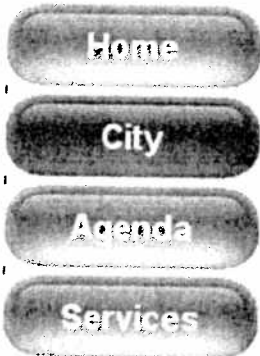
[top of page](#) | [about](#) | [search](#) | [help](#) | [home](#) - [contribute](#) - [bookstore](#) - [teaching tools](#) - [feedback](#) - [credits](#) - [multimedia](#) - [news](#)

[how to cite this article](#) | [report an error or correction](#) | [suggest an article topic](#)

The *Handbook of Texas Online* is a joint project of The General Libraries at the University of Texas at Austin and the Texas State Historical Association.

New Deal Texas

Home of the Mighty Lions



[Timbo's Restaurant](#)

[Mighty Lions and
Lady Lions](#)



[Local Weather](#)

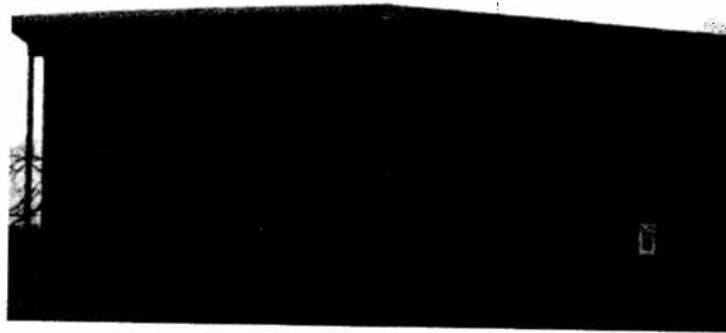


[Local News Stations](#)

[KCBD, KLBK, Fox34,
KAMC](#)



Renew your Driver License
or Vehicle Registration,
pay tickets or fees,
and MUCH MORE!



New Deal City Hall
404 S Monroe
New Deal, Texas 79350
Phone (806)746-6399

City Hall Hours:
Monday- Friday
8:30am - 4:00pm

Monthly Agenda

Minutes

Minutes will be posted as they are
approved at the following council
meeting.

December 2006

January 22, 2007

January 29, 2007

February 08, 2007

February 15, 2007

February 26, 2007

Special March 19, 2007

Upcoming Events

April 9, 2007 - Special Meeting

City Council

Elected and Appointed Positions

Form of Government

The citizens of New Deal elect 6 council members including the Mayor. The Council then appoints a City Attorney, and the City Secretary.

The City of New Deal, city council members serve a two-year term. The elected mayor presides over city council meetings, serves as the ceremonial head of the city government, and signs contracts, and other documents as authorized by the council.

The Primary function of the City of New Deal City Council is to set policy, consider bids and contracts, review/approve the budget, determine tax and fee structures, and consider request from citizens.

The City of New Deal City Council holds regular city meetings every 4th Monday, at 7:30pm at the New Deal City Hall. All regular meetings of the City Council are open to the public.

Mayor-	Open
Leta Owens-Maxfield	Place 1
Bucky Broadus	Place 2
Brenda Taylor	Place 3
Wayne McCray	Place 4
Lori Pineda	Place 5

City Employees

Sharon Trumble City Secretary, and Municipal Court Judge

Ronnie Agnew- City Attorney

Debby James- Office and Municipal Court Clerk

John Carrasco- Police Officer

Steve Wheeler- Police Chief

Economic Development Board

The Economic Development Board meets quarterly. The meetings are held at

City Hall 404 S. Monroe New Deal, Texas.

Board Members

Ophelia Vasquez President

Gary Carson Vice President

Agenda

Minutes

Gary Carson Vice President

Ursula Ramirez Secretary/Treasurer
Karen Kelley

Orren Hooper

Barb Carson

Wanda Arant

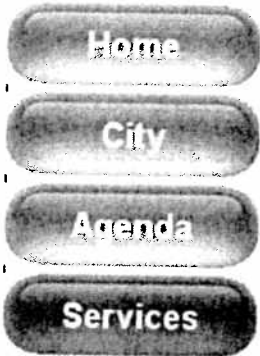
Plan of Annexation



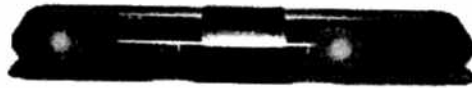
[Home](#) [City](#) [City Agenda](#) [Services](#)

New Deal Texas

Home of the Mighty Lions



Police Department



Timbo's Restaurant

Mighty Lions and
Lady Lions



Local Weather



Local New Stations

KCBD, KLBK, Fox34,
KAMC



About The New Deal
Volunteer Fire Department

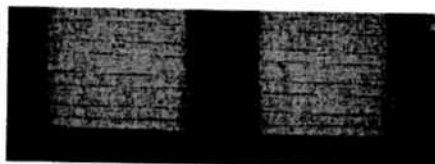


Volunteer Fire Department

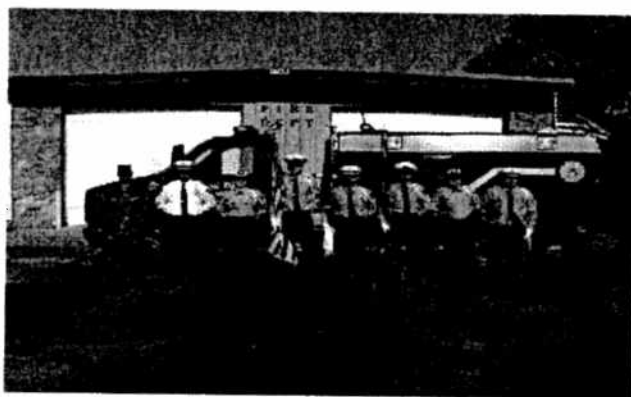
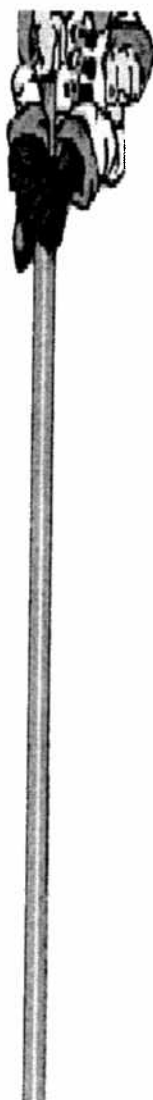
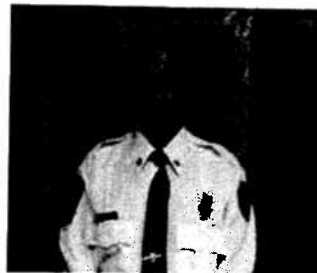
or venue registration,
pay hotels or taxes,
and MUCH MORE!



New Deal Vol. Fire Department, Inc. is an all volunteer department providing fire suppression, rescue and EMS first responder services to the City of New Deal and a portion of Northern Lubbock County. Founded in 1977. New Deal Volunteer Fire Department is made possible by its dedicated members, response units, and by the grace of God.



Terry Jones
Chaplin





[Home](#) [City](#) [City Agenda](#) [Services](#)



U.S. Census Bureau
American FactFinder

FACT SHEET

New Deal town, Texas

View a Fact Sheet for a **race, ethnic, or ancestry group**

Census 2000 Demographic Profile Highlights:

General Characteristics - show more >>

	Number	Percent	U.S.		
Total population	708				
Male	362	51.1	49.1%	map	brief
Female	346	48.9	50.9%	map	brief
Median age (years)	29.7	(X)	35.3	map	brief
Under 5 years	56	7.9	6.8%	map	
18 years and over	466	65.8	74.3%		
65 years and over	60	8.5	12.4%	map	brief
One race	689	97.3	97.6%		
White	529	74.7	75.1%	map	brief
Black or African American	7	1.0	12.3%	map	brief
American Indian and Alaska Native	1	0.1	0.9%	map	brief
Asian	0	0.0	3.6%	map	brief
Native Hawaiian and Other Pacific Islander	0	0.0	0.1%	map	brief
Some other race	152	21.5	5.5%	map	
Two or more races	19	2.7	2.4%	map	brief
Hispanic or Latino (of any race)	291	41.1	12.5%	map	brief
Household population	708	100.0	97.2%	map	brief
Group quarters population	0	0.0	2.8%	map	
Average household size	3.01	(X)	2.59	map	brief
Average family size	3.35	(X)	3.14	map	
Total housing units	262			map	
Occupied housing units	235	89.7	91.0%		brief
Owner-occupied housing units	173	73.6	66.2%	map	
Renter-occupied housing units	62	26.4	33.8%	map	brief
Vacant housing units	27	10.3	9.0%	map	

Social Characteristics - show more >>

	Number	Percent	U.S.		
Population 25 years and over	436				
High school graduate or higher	306	70.2	80.4%	map	brief
Bachelor's degree or higher	42	9.6	24.4%	map	
Civilian veterans (civilian population 18 years and over)	39	8.2	12.7%	map	brief
Disability status (population 5 years and over)	140	20.4	19.3%	map	brief
Foreign born	17	2.3	11.1%	map	brief
Male, Now married, except separated (population 15 years and over)	149	56.7	56.7%		brief
Female, Now married, except separated (population 15 years and over)	153	58.6	52.1%		brief
Speak a language other than English at home (population 5 years and over)	244	35.5	17.9%	map	brief

Economic Characteristics - show more >>


	Number	Percent	U.S.		
In labor force (population 16 years and over)	356	70.8	63.9%		brief
Mean travel time to work in minutes (workers 16 years and over)	20.1	(X)	25.5	map	brief
Median household income in 1999 (dollars)	38,077	(X)	41,994	map	
Median family income in 1999 (dollars)	40,573	(X)	50,046	map	
Per capita income in 1999 (dollars)	12,695	(X)	21,587	map	
Families below poverty level	24	11.8	9.2%	map	brief
Individuals below poverty level	110	15.3	12.4%	map	

Housing Characteristics - show more >>

	Number	Percent	U.S.		
Single-family owner-occupied homes	87				brief
Median value (dollars)	43,200	(X)	119,600	map	brief
Median of selected monthly owner costs	(X)	(X)			brief
With a mortgage (dollars)	860	(X)	1,088	map	
Not mortgaged (dollars)	247	(X)	295		

(X) Not applicable.

Source: U.S. Census Bureau, Summary File 1 (SF 1) and Summary File 3 (SF 3)

The letters PDF or symbol  indicate a document is in the Portable Document Format (PDF). To view the file you will need the Adobe® Acrobat® Reader, which is available for **free** from the Adobe web site.