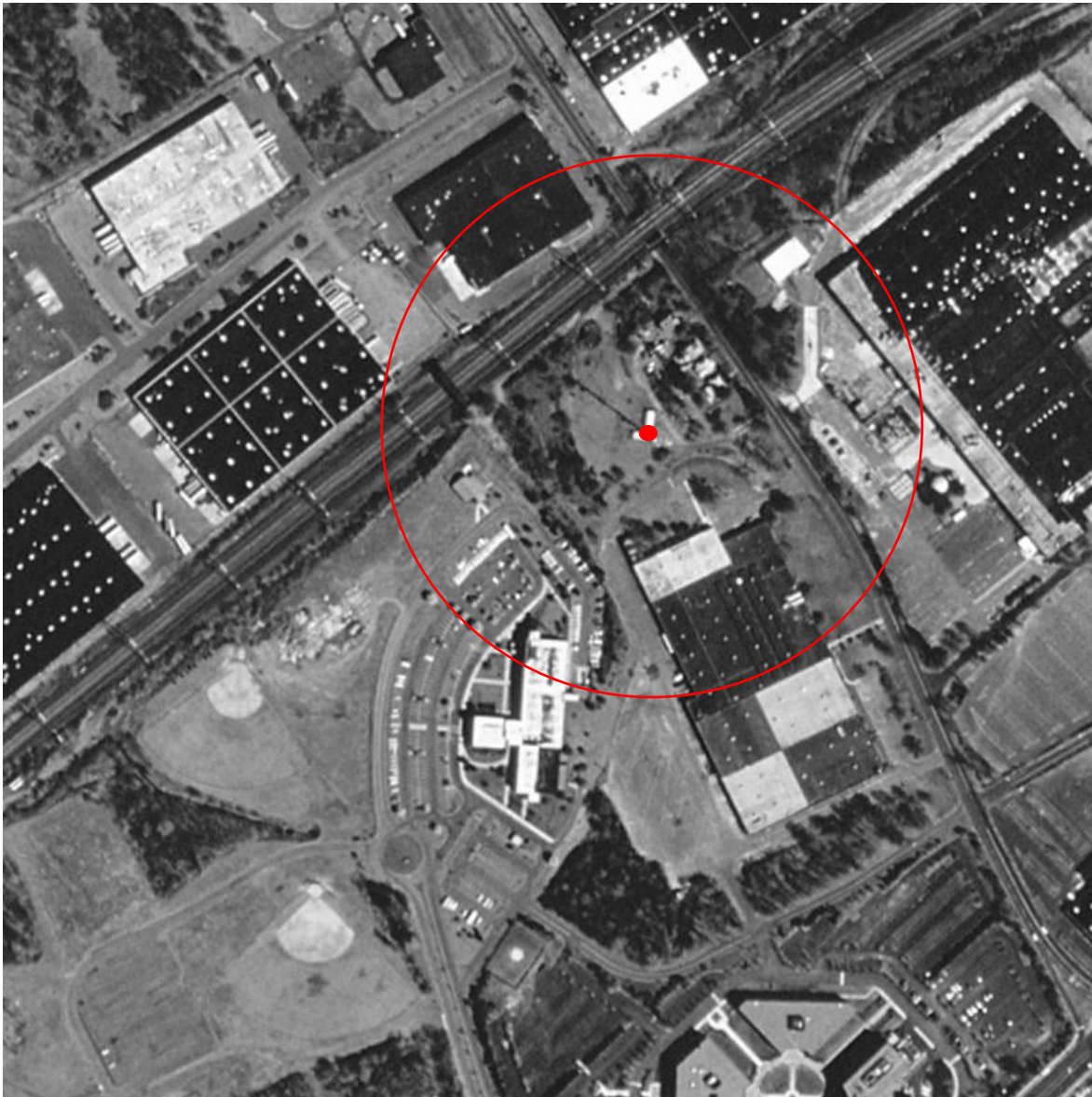


# Radiotechniques

---

402 Tenth Ave. • PO Box 367 • Haddon Heights, NJ 08035-0367

Exhibit 12 Figure 3  
Aerial Map  
Om P. Tschand  
BNPFT-20030822ADF  
Edison, NJ  
June 2004



ACME Mapper N 40.529136 W 74.392733, 1 m/p

100 m

# Radiotechniques

---

402 Tenth Ave. • PO Box 367 • Haddon Heights, NJ 08035-0367

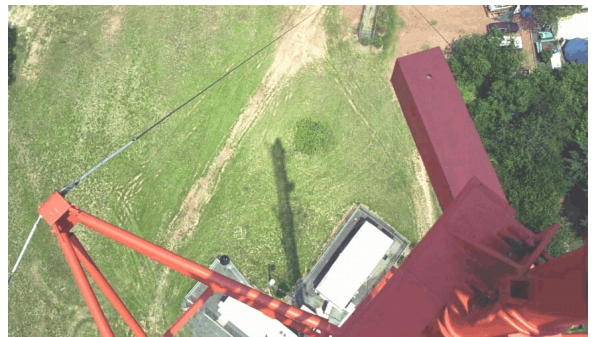
Site Photographs  
Proposed FM Translator Antenna Site  
Om P. Tschand  
Edison, NJ  
June 2004

Photographs demonstrating no multi story buildings in vicinity of FM Translator Site.

North Panorama



North Looking Down



East Panorama



East Looking Down





# Radiotechniques

---

402 Tenth Ave. • PO Box 367 • Haddon Heights, NJ 08035-0367

South Panorama



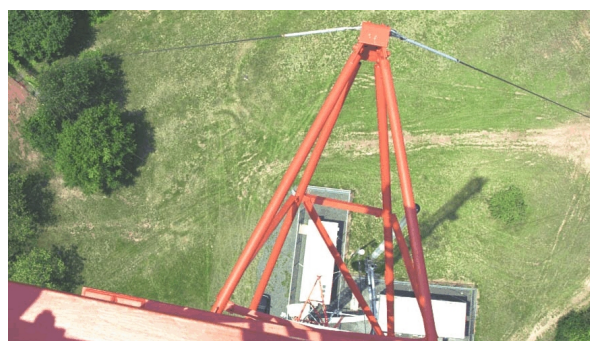
South Looking Down



West Panorama



West Looking Down



These photographs clearly show that no building or other structure intersects the interfering contour from the proposed translator.