

DISCUSSION

This report and the attached exhibits support a minor change application for AM broadcast station WMRO, 1560 kHz, Gallatin, TN. WMRO-AM is presently authorized in license file No. BL-2000607ACJ for 1.0 kW daytime & 0.003 kW. nighttime non-directional operation. This application seeks to change the daytime power from 1.0 kW. to 0.250 kW. No other changes are proposed.

Broadcast Facility. This application complies with applicable rules contained in C.F.R. Chapter 47, Part 73, Subpart A.

Community Coverage. REQUEST FOR WAIVER 73.24(I). The 5.0 mv/m contour encompasses >90% of the city limits of Gallatin. Some recently zoned areas of commercial and office district areas, largely undeveloped and sparsely populated, will fall outside the proposed 5 millivolt contour (see attached Figure 4A and 4B). These areas remain served inside the 5 millivolt contours of local stations WHIN and WYXE, both licensed to Gallatin. Therefore, there is no loss of AM local service.

Nighttime city coverage is not required of secondary nighttime service.

Main Studio Location. The main studio location remains unchanged and in compliance with 73.1125.

Groundwave Interference. The proposal is a reduction in efficiency from 302.68 mv/m/kw @ 1 km. to 151.34 mv/m/kw @ 1 km. No prohibited contour overlap results from the proposed facility.

Skywave Interference. There is no proposed change in the night authorization. No destructive interference is caused to the normally protected contours of all existing co- and first adjacent-channel stations, as required.

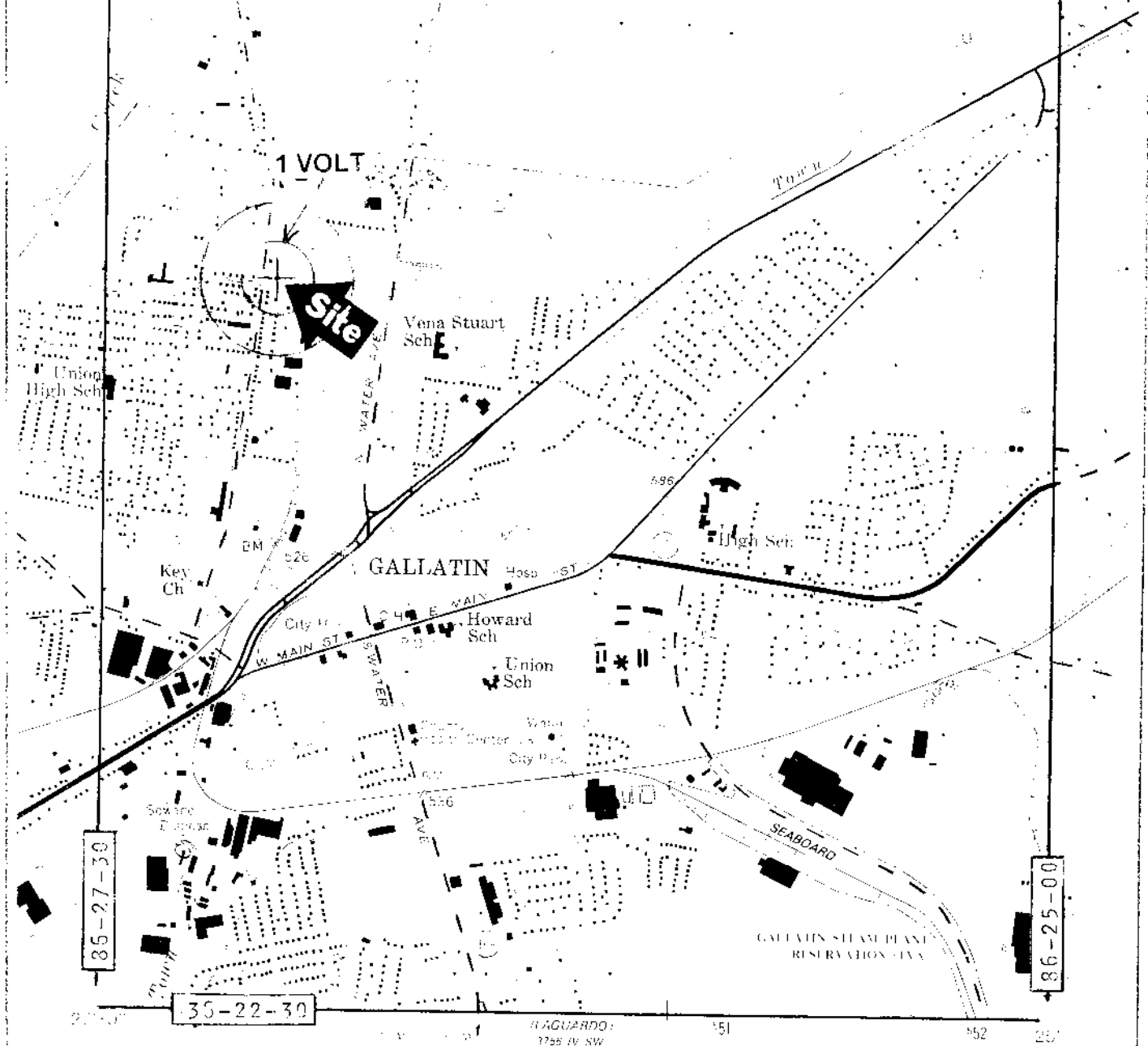
Environmental Protection Act / RF Exposure. The applicant will comply with OET Bulletin 65 Supplement A. The tower is enclosed within a grounded, metal chain link fences. The gate is padlocked and station management will control access to the tower by workmen.

ENGINEERING EXHIBITS TABLE OF CONTENTS

FCC Form 301 Section III-A

- Figure 1. Vicinity of Site Map (Topographic Map Section)
- Figure 2. Antenna Vertical Sketch
- Figure 3. Ground System Plat
- Figures 4A & 4B. City of License Coverage Map
- Figure 5. Additional Service Contours Map
- Figure 6. Allocations Study – M3 Map

FIGURE 1
WMRO - CLASSIC BROADCASTING, INC.
VICINITY OF SITE TOPO MAP

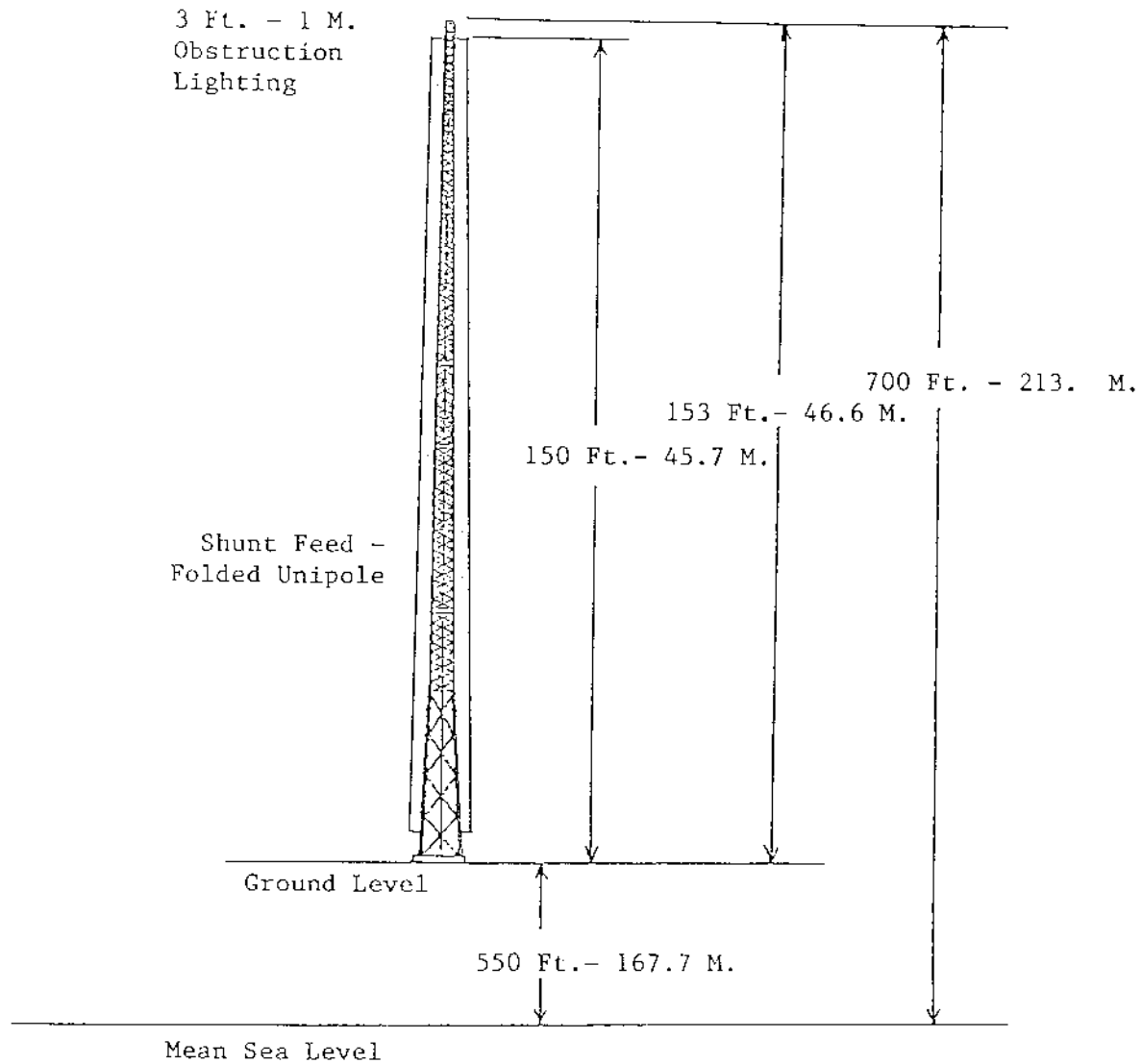


SCALE 1000

NATIONAL GEODETIC VERTICAL DATUM OF 1929

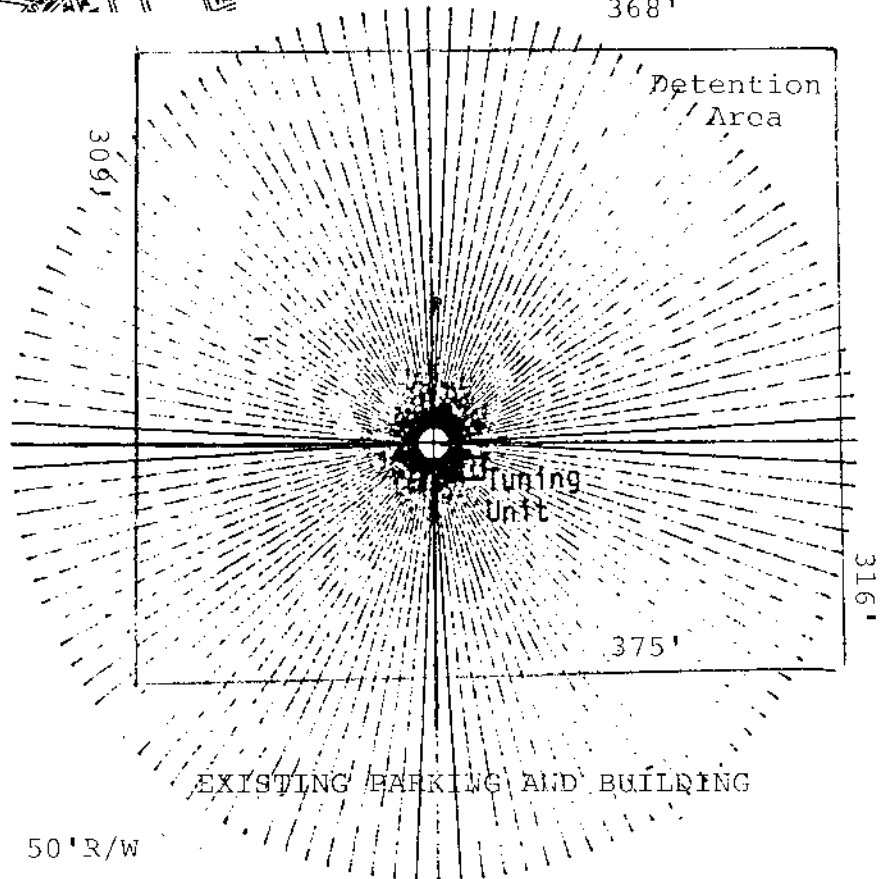
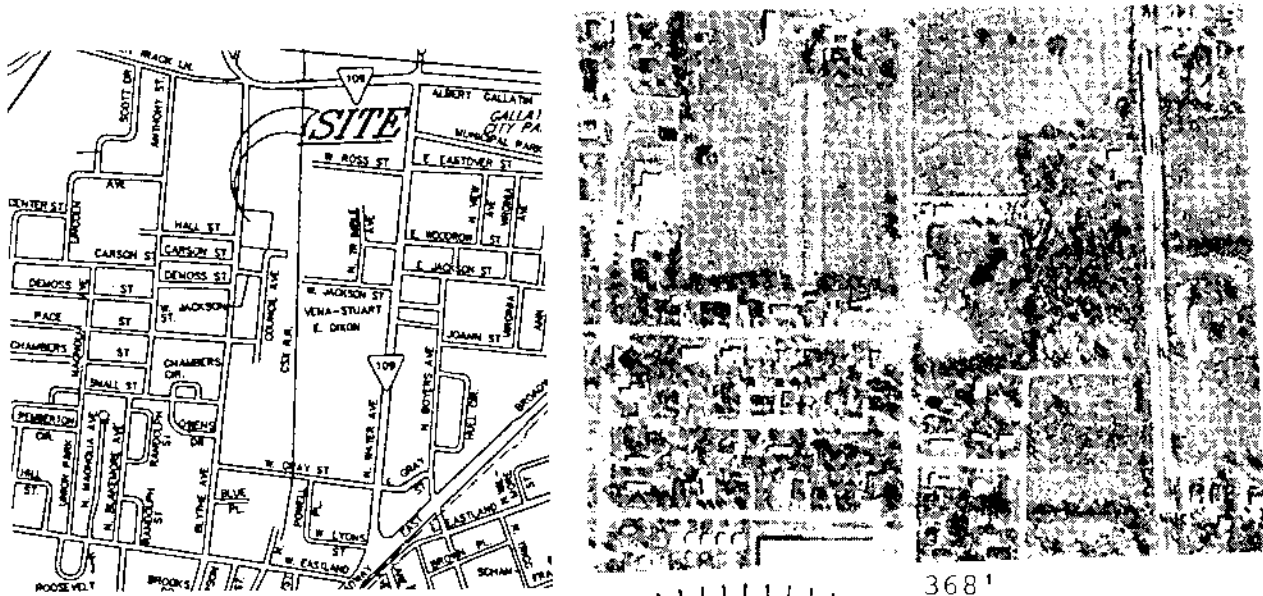
FIGURE 2
WMRO - CLASSIC BROADCASTING, INC.
ANTENNA VERTICAL SKETCH

NAD 27: N. 36-24-03 W. 86-27-03
NAD 83: N. 36-24-03.1697 W. 86-27-02.97552



Not to Scale

FIGURE 3
WMRO - CLASSIC BROADCASTING, INC.
GROUND SYSTEM PLAT



BLYTHE AVE.

SCALE OF FEET - 100 FT/IN.

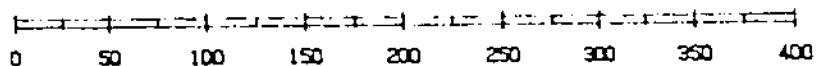
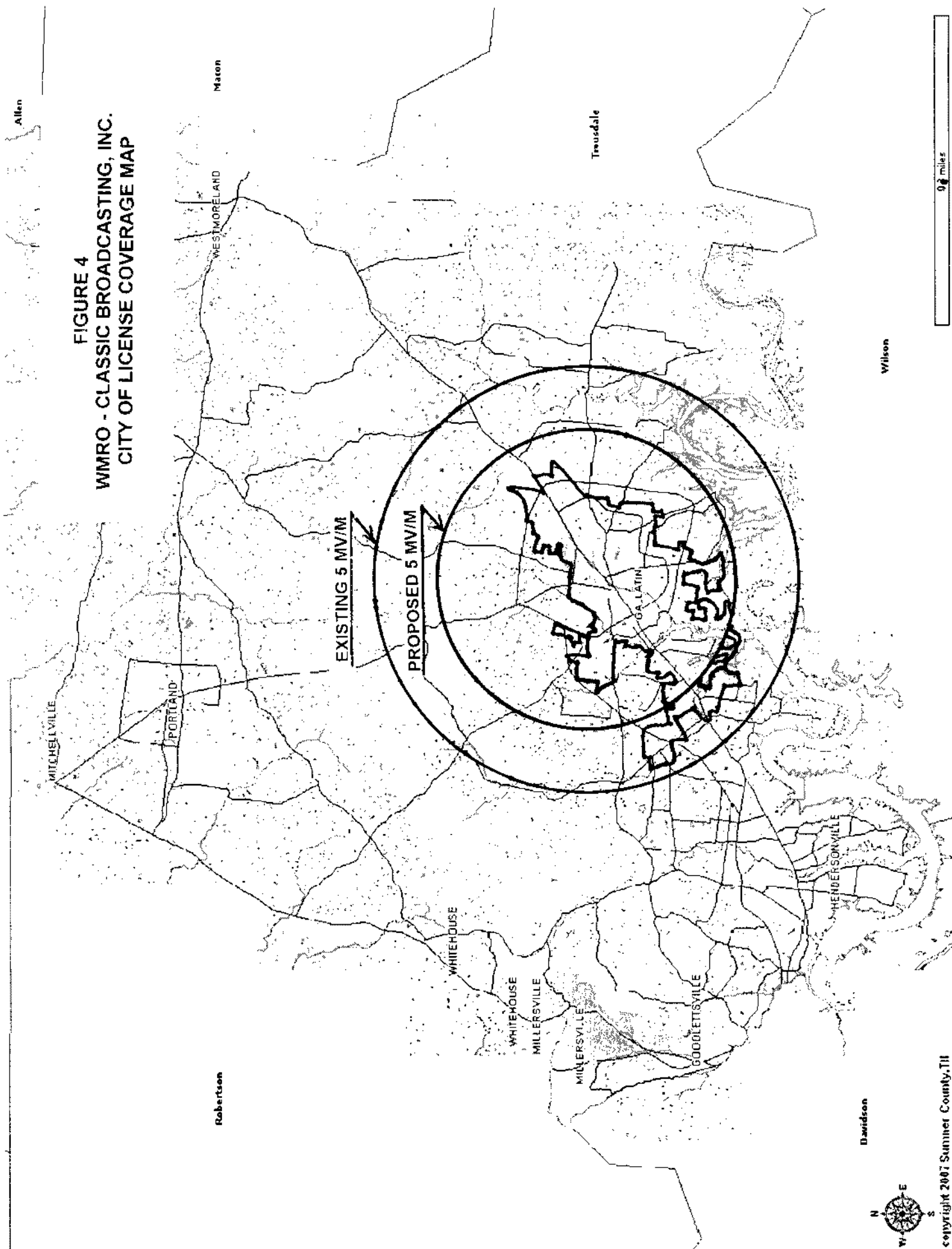
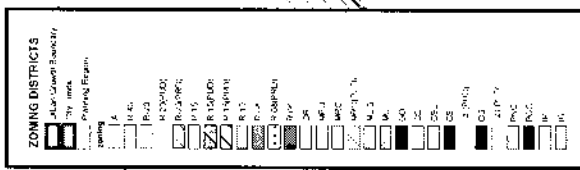


FIGURE 4
WMRO - CLASSIC BROADCASTING, INC.
CITY OF LICENSE COVERAGE MAP



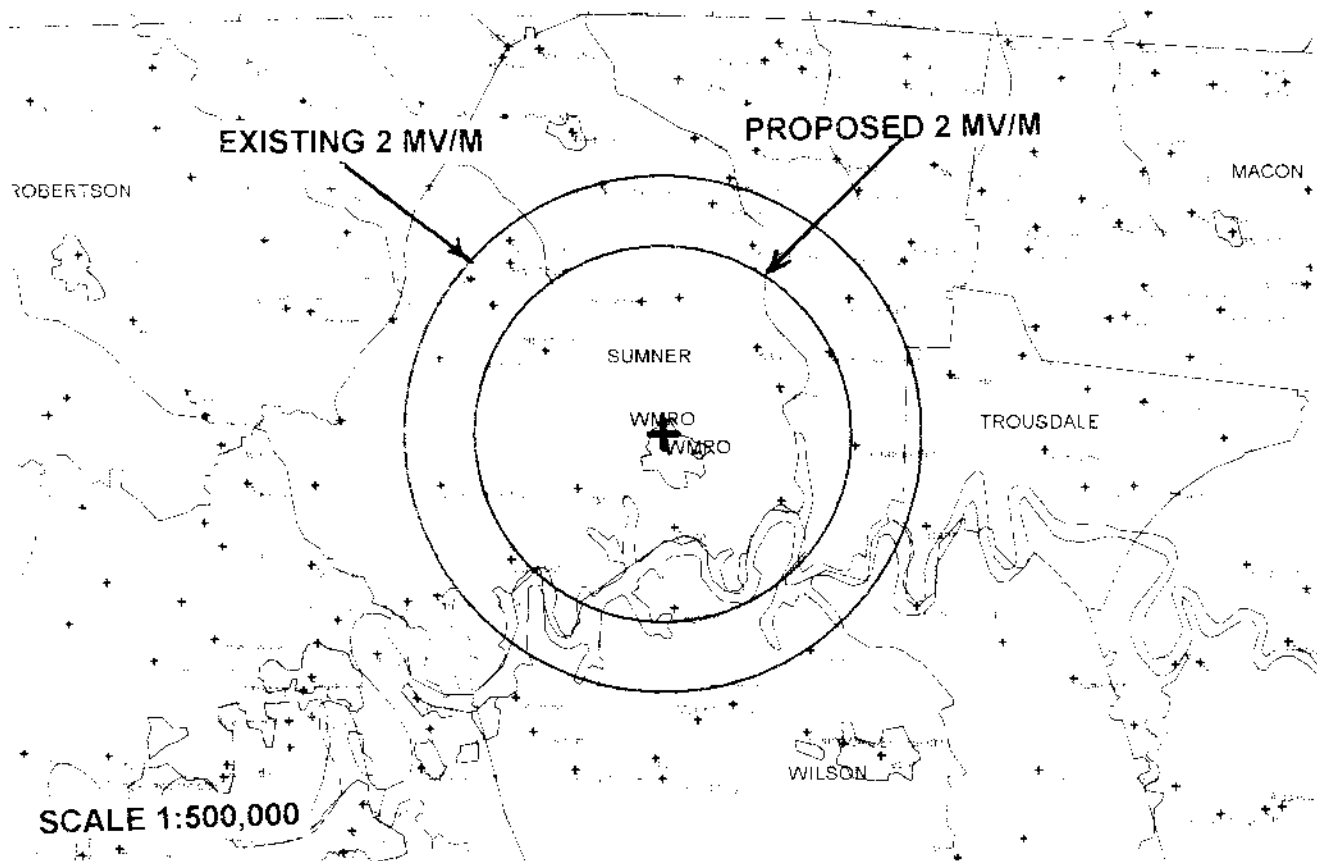
City of Gallatin Zoning Map

FIGURE 4B



Source: City of Gallatin Planning Division, 11/13/06
Visit www.gallatin-tn.gov for updated information

FIGURE 5
WMRO - CLASSIC BROADCASTING, INC.
ADDITIONAL SERVICE CONTOUR MAP



CONTOUR CALCULATIONS

CONTOUR	EXISTING DIST KM.	PROPOSED DIST KM.	EXISTING SQ.KM.	EXISTING POP.	PROPOSED SQ. KM.	PROPOSED POP.
5 MV/M	11.3	8.0	399	36,595	207	28,980
2 MV/M	17.2	12.5	929	69,933	493	41,073
0.5 MV/M	31.94	23.4	3208	342,172	1726	168,004
0.25 MV/M	43.7	32.0	5999	710,271	3210	342,822

Blanketing Contour Proposed 0.27 km.

*Based on M3 of g.c. = 4

*2000 Population Data

17 MV/M N.I.F.

