

FIGURE 1A

Carson City, NV CH297FT Allocation Map

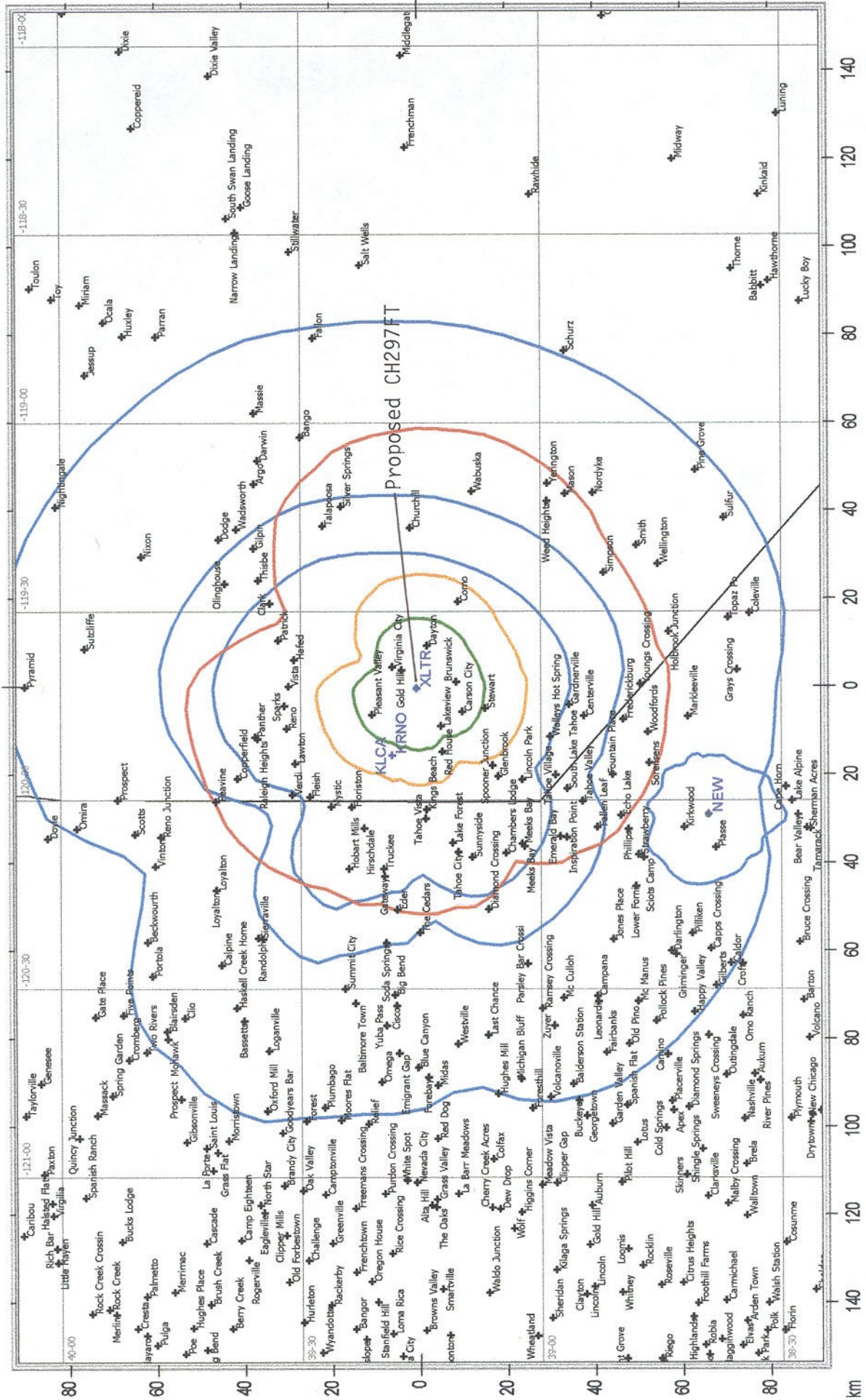




FIGURE 1B

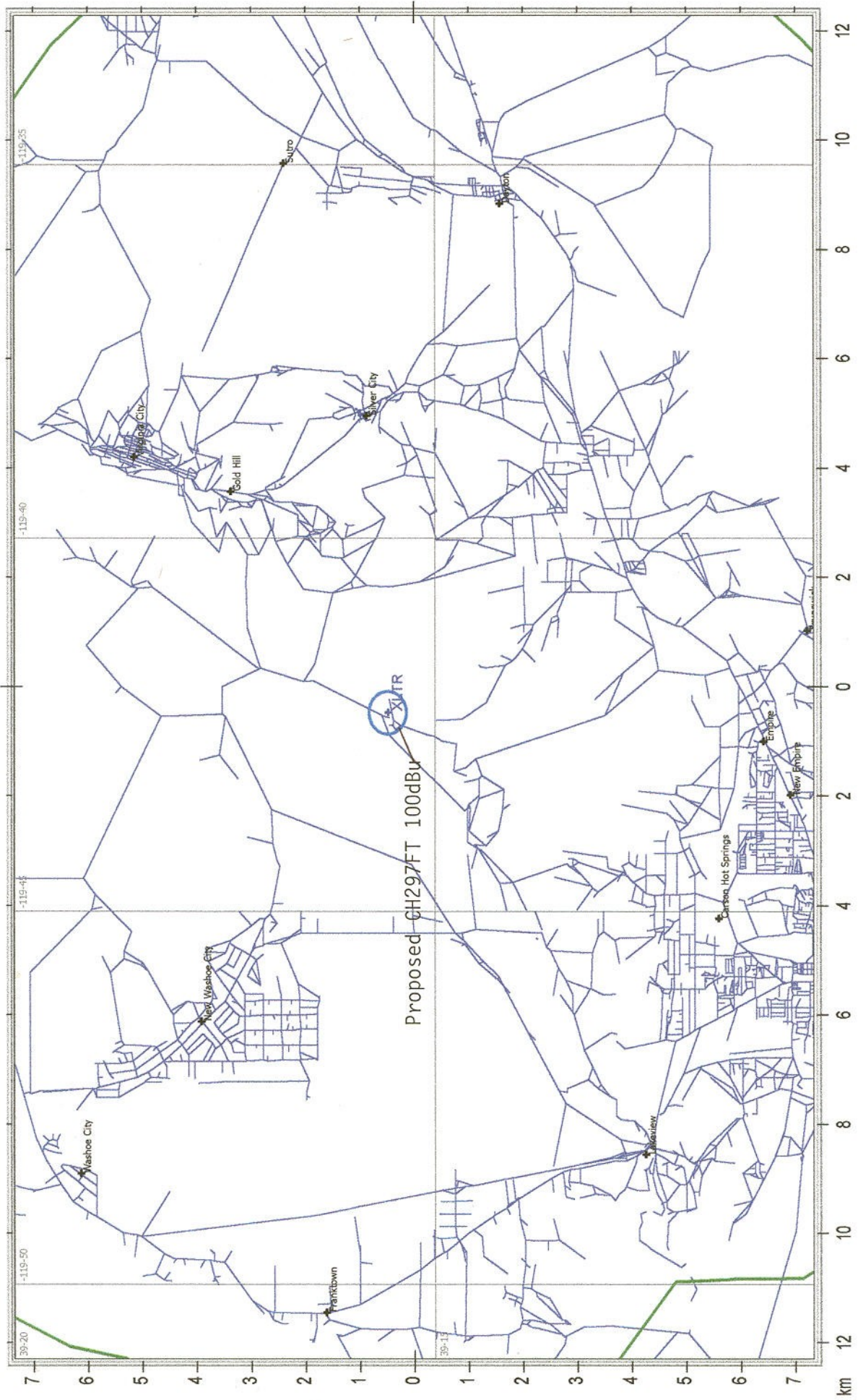


FIGURE 1C

Callsign : KLCA  
 Coordinates : 39-18-38.0 N, 119-53-01.0 W  
 Comments : Transmitter Site Located in Nevada, Zone 2-Amended 970402 \*\$73.215\*  
 Frequency (MHz): 96.50000  
 HAAT (m): 977.79 AMSL (m): 2984.00  
 Elevation (m): 2485.00 Tower AGL (m): 499.00  
 ERP (w): 6100  
 TX power (w): 6 Gain (dB): 0.00  
 City/State : TAHOE CITY, CA  
 ARN :  
 Distance (km): 16  
 Licensee : AMERICOM LAS VEGAS LIMITED PARTNERSHIP

□  
 Callsign : KRNO  
 Coordinates : 39-18-38.0 N, 119-53-01.0 W  
 Comments :  
 Frequency (MHz): 106.90000  
 HAAT (m): 980.79 AMSL (m): 2987.00  
 Elevation (m): 2485.00 Tower AGL (m): 502.00  
 ERP (w): 35000  
 TX power (w): 35 Gain (dB): 0.00  
 City/State : INCLINE VILLAGE, NV  
 ARN :  
 Distance (km): 16  
 Licensee : AMERICOM LAS VEGAS LIMITED PARTNERSHIP

□  
 Callsign : KSRN  
 Coordinates : 39-18-48.0 N, 119-52-59.0 W  
 Comments :  
 Frequency (MHz): 107.70000  
 HAAT (m): 947.25 AMSL (m): 2958.00  
 Elevation (m): 2581.00 Tower AGL (m): 377.00  
 ERP (w): 230  
 TX power (w): 0 Gain (dB): 0.00  
 City/State : KINGS BEACH, CA  
 ARN :  
 Distance (km): 16  
 Licensee : NM LICENSING, LLC

□  
 Callsign : KSRN  
 Coordinates : 39-18-48.0 N, 119-52-59.0 W  
 Comments : \*\$73.215\*  
 Frequency (MHz): 107.70000  
 HAAT (m): 947.25 AMSL (m): 2958.00  
 Elevation (m): 2581.00 Tower AGL (m): 377.00  
 ERP (w): 900  
 TX power (w): 1 Gain (dB): 0.00  
 City/State : KINGS BEACH, CA  
 ARN :  
 Distance (km): 16  
 Licensee : NM LICENSING, LLC

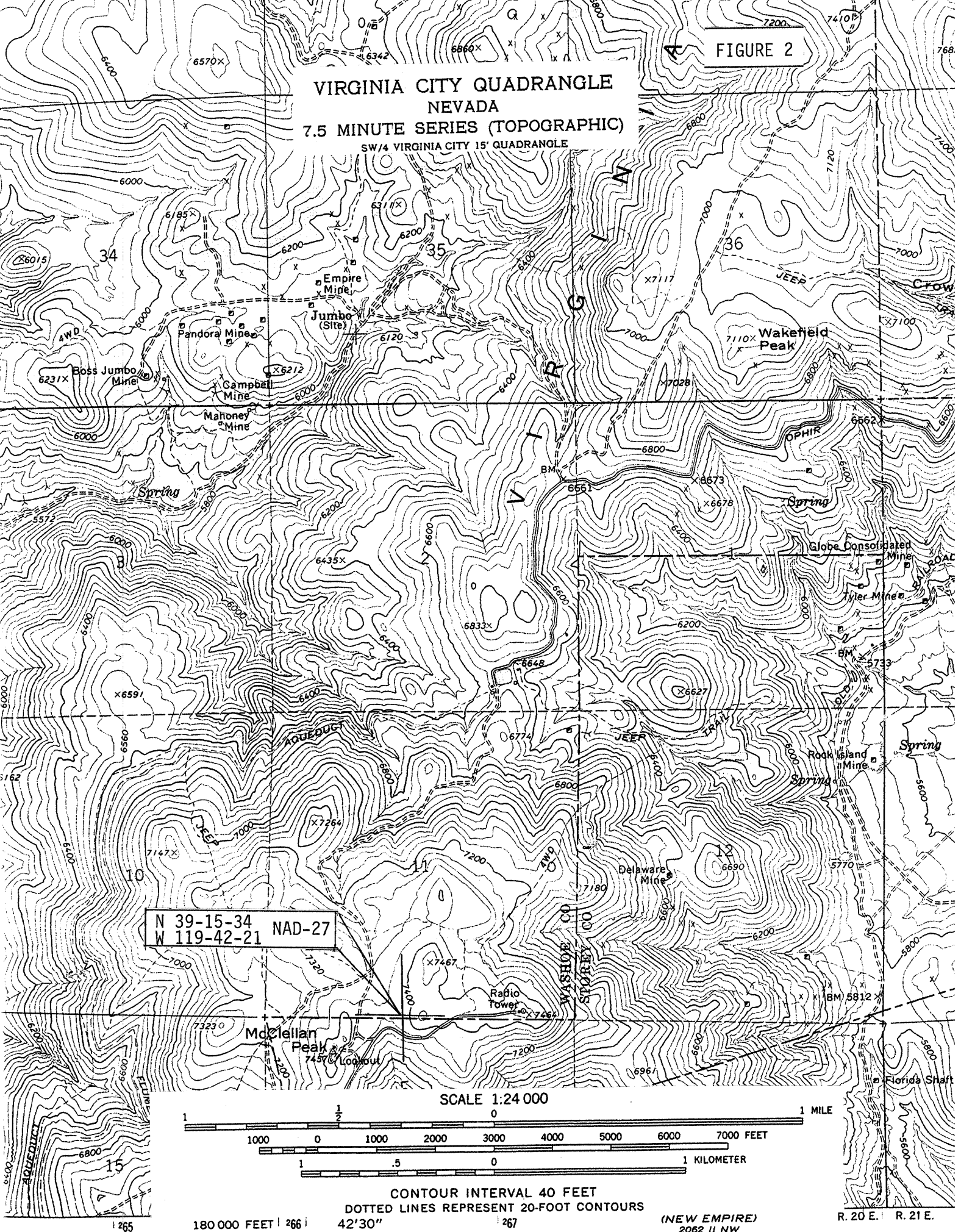
□  
 Callsign : NEW  
 Coordinates : 38-39-08.0 N, 120-02-20.0 W  
 Comments :  
 Frequency (MHz): 107.90000  
 HAAT (m): 717.83 AMSL (m): 2988.00  
 Elevation (m): 2577.00 Tower AGL (m): 411.00  
 ERP (w): 10  
 TX power (w): 0 Gain (dB): 0.00  
 City/State : KIRKWOOD, CA  
 ARN :  
 Distance (km): 73  
 Licensee : YOUR CHRISTIAN COMPANION NETWORK, INC.

□  
 Callsign : XLTR  
 Coordinates : 39-15-34.0 N, 119-42-21.0 W  
 Frequency (MHz): 107.30000  
 HAAT (m): 707.17 AMSL (m): 2301.00  
 Elevation (m): 2106.00 Tower AGL (m): 195.00  
 ERP (w): 10  
 TX power (w): 0 Gain (dB): 0.00  
 City/State : CARSON CITY, NV  
 ARN :  
 Distance (km): 0  
 Licensee : EASTERN SIERRA BROADCASTING

□

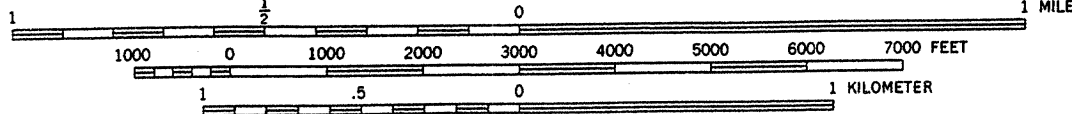
FIGURE 2

VIRGINIA CITY QUADRANGLE  
NEVADA  
7.5 MINUTE SERIES (TOPOGRAPHIC)  
SW/4 VIRGINIA CITY 15' QUADRANGLE



N 39-15-34  
W 119-42-21 NAD-27

SCALE 1:24 000



CONTOUR INTERVAL 40 FEET  
DOTTED LINES REPRESENT 20-FOOT CONTOURS

(NEW EMPIRE)  
2062 II NW

R. 20 E. R. 21 E.

SCALE 1:24 000

**EASTERN SIERRA BROADCASTING**  
**Proposed CH297FT**  
**Carson City, NV**

**REQUEST FOR WAIVER**

Eastern Sierra Broadcasting, applicant for an FM translator to be licensed to Carson City, NV and to operate on Channel 297 requests a waiver of contour overlap with KRNO(CH295), Incline Village, NV and KSRN (CH299), Kings Beach, CA in that the proposed CH269FT 100 dBu contour is in an unpopulated area. Figure 2 is a portion of the Virginia City, NV USGS topographic map that clearly demonstrates this fact.