

**MINOR CHANGE APPLICATION**  
**CENTRAL FLORIDA EDUCATIONAL FOUNDATION, INC.**  
**W241BL FM TRANSLATOR STATION**  
**CH 241D - 96.1 MHZ - 0.115 KW (DA)**  
**MOUNT DORA, FLORIDA**  
**August 2011**

**EXHIBIT C**

As indicated on Exhibit C1, the proposed W241BL operation, with an effective radiated power of 0.115 kilowatt at 73.3 meters (241.0 feet) above ground level, will not cause interference to any existing, applied for, or proposed facility. As noted on Exhibit C1, the proposed W241BL is inside the predicted 60 dBu contour of second adjacent station WHTQ, Channel 243C, Orlando, Florida. Due to the relationship between W241BL and WHTQ, a 40 db ratio of the protected and interfering contours applies.

We have, therefore, calculated the level of signal of WHTQ at the proposed W241BL site. A map showing the WHTQ contour at the proposed W241BL site is attached as Exhibit C2. The WHTQ contour at the W241BL site is 69.45 dBu (50/50), and the corresponding interfering contour for W241BL is 109.45 dBu (50/10). At its greatest distance, the interfering contour (109.45 dBu) of W241BL extends 0.25 kilometer (820.0 feet) in the direction of the main lobe of the directional antenna. While the interfering contour reaches ground, it falls in an unpopulated area without any regularly used roads. Exhibit C3 is a portion of Google Earth map that indicates that the area encompassed by the W241BL contour is devoid of occupied buildings and outside any roads.

Based on the foregoing, it is believed that the proposed W241BL is in compliance with §74.1204(d) of the Commission's rules. If a waiver of the rule is needed to address WHTQ, one is respectfully requested, based on the absence of any population affected in the interference area.

**MINOR CHANGE APPLICATION**  
**CENTRAL FLORIDA EDUCATIONAL FOUNDATION, INC.**  
**W241BL FM TRANSLATOR STATION**  
**CH 241D - 96.1 MHZ - 0.115 KW (DA)**  
**MOUNT DORA, FLORIDA**  
**August 2011**

**EXHIBIT C1**

Interference Review for W241BL Mount Dora, Florida  
Using Proposed Site as Reference

REFERENCE CH# 241D - 96.1 MHz, Pwr= 0.115 kW DA, HAAT= 96.2 M, COR= 119.7 M DISPLAY DATES  
28 46 19.0 N. Average Protected F(50-50)= 10.5 km DATA 08-08-11  
81 37 35.0 W. Standard Directional SEARCH 08-08-11

CH CITY	CALL	TYPE	ANT STATE	AZI. <--	DIST FILE #	LAT. LNG.	Pwr (kW) HAAT (M)	INT (km) COR (M)	PRO (km) LICENSEE	*IN* (Overlap in km)	*OUT*
241D Tavares	W241BL	LIC	C FL	304.2 124.1	17.4 BLFT-20110418ACE	28 51 35.0 81 46 27.0	0.019 105	23.5 127	7.0 Central Florida Educational	-16.4*	-24.5
243C Orlando	WHTQ	LIC	NCY FL	111.9 292.2	60.3 BLH-20011219AAC	28 34 07.0 81 03 16.0	100.000 454	12.1 463	83.4 Cox Radio, Inc.	43.6	-23.2*
241A Dade City	WTMP-FM	LIC	CX FL	243.2 62.9	73.4 BLH-20080109AFU	28 28 22.0 82 17 45.0	2.800 147	83.8 180	28.9 Scott Savage, Receiver	-17.6*	20.3
241C0 Jacksonville	WEJZ	LIC	CN FL	359.5 179.5	171.9 BLH-19881109KA	30 19 22.0 81 38 34.0	100.000 300	172.2 304	72.6 Renda Broadcasting Corp. O	-4.2*	87.0
240D Orlando	W239BS	CP	C FL	172.4 352.4	23.8 BPFT-20110225ACP	28 33 32.5 81 35 38.9	0.099	23.4 245	15.5 Central Florida Educational	-4.1	1.9
294C1 Tavares	WXXL«	LIC	CX FL	172.4 352.4	23.9 BMLH-20100809CHA	28 33 31.0 81 35 38.0	100.000 251	82.6 284	69.6 AMFM Radio Licenses, L.L.C	22.0R	1.9M
239D Mount Dora	W239BS	LIC	DV FL	218.0 37.9	17.3 BLFT-20110203ACP	28 38 56.0 81 44 09.0	0.250 115	1.1 143	13.9 Central Florida Educational	12.1	3.3
240D Orlando	W239BS	APP	C FL	132.3 312.4	27.5 BPFT-20110729AAP	28 36 20.2 81 25 05.0	0.099	17.2 165	11.7 Central Florida Educational	6.4	10.2
241D Kissimmee	1127837	APP	C FL	162.4 342.4	53.6 BNPFT-20030828AOI	28 18 40.0 81 27 36.0	0.080 43	18.8 63	5.7 Bible Broadcasting Network	30.7	35.1
240L1 Summerfield	WJRN-LP	LIC	FL	299.0 118.7	55.5 BLL-20040825ACC	29 00 45.0 82 07 31.0	0.100 17	8.0 40	5.6 Hispanic-multicultural Bro	37.0	35.1
239C3 Ormond-by-the-sea	WHOG-FM	LIC	CX FL	46.1 226.3	74.6 BMLH-20040702AEK	29 14 11.0 81 04 22.0	25.000 100	4.0 103	38.3 Black Crow Radio, LLC, Deb	66.1	36.1
238A Silver Springs	WNDD	LIC	CN FL	324.3 144.1	69.8 BLH-19950501KA	29 16 55.0 82 02 50.0	6.000 100	2.8 118	28.5 Ocala Broadcasting Corpora	58.2	40.8
295D Ocala	650572«	APP	C FL	311.9 131.6	67.6 BNPFT-20030317KLW	29 10 38.0 82 08 42.0	0.250 32	7.1 55	7.1 Rfengineers.com, Inc.	10.0R	57.6M
238D Kissimmee	651845	APP	C FL	163.2 343.3	59.1 BNPFT-20030317MKM	28 15 43.0 81 27 06.0	0.055 53	0.5 72	6.1 Bible Broadcasting Network	54.4	52.8
242A Yankeetown	WXOF	LIC	C FL	285.3 104.8	107.3 BLH-20000104ABQ	29 01 18.0 82 41 20.0	3.500 132	42.1 135	27.6 WGUL-FM, Inc.	54.5	64.5
244D Ocala	W244BC	LIC	VN FL	311.9 131.6	67.7 BLFT-19980105TD	29 10 38.0 82 08 44.0	0.010 92	0.2 116	5.6 Radio Training Network, Inc.	57.5	61.5

Terrain database is NGDC 30 SEC, R= 73.215 qualifying spacings or FCC minimum spacings in KM, M= Margin in KM  
Contour distances are on direct line to and from reference station. Reference Zone= East Zone, Co to 3rd  
adjacent.

Ant Column: {D= DA Standard, Z= DA 73.215, N= Not DA 73.215, \_= Omni}, Polarization (C,H,V,E), Beamtilt(Y,N,X)  
\*\*\*affixed to 'IN' or 'OUT' values = site inside protected contour.

« = Station meets FCC minimum distance spacing for its class.

**W241BL**

Latitude: 28-46-19 N  
Longitude: 081-37-35 W  
ERP: 0.115 kW  
Channel: 239D  
Frequency: 95.7 MHz  
AMSL Height: 119.7 m  
Horiz. Pattern: Directional  
Prop Model : FCC

**Graham Brock, Inc. - Broadcast Technical Consultants****WHTQ**

BLH-20011219AAC  
Latitude: 28-34-07 N  
Longitude: 081-03-16 W  
ERP: 100.00 kW  
Channel: 243C  
Frequency: 96.5 MHz  
AMSL Height: 463.0 m  
Horiz. Pattern: Omni  
Prop Model : FCC

W241BL 109.45 (50/10)

WHTQ 69.45 dBu (50/50)

W241BL

**EXHIBIT C2**

**MINOR CHANGE APPLICATION  
CENTRAL FLORIDA  
EDUCATIONAL FOUNDATION, INC.  
W241BL FM TRANSLATOR  
CH 241D - 96.1 MHz - 0.115 KW (DA)  
MOUNT DORA, FLORIDA  
August 2011**

Scale 1:24,000

0 0.33 0.67 1.0 km



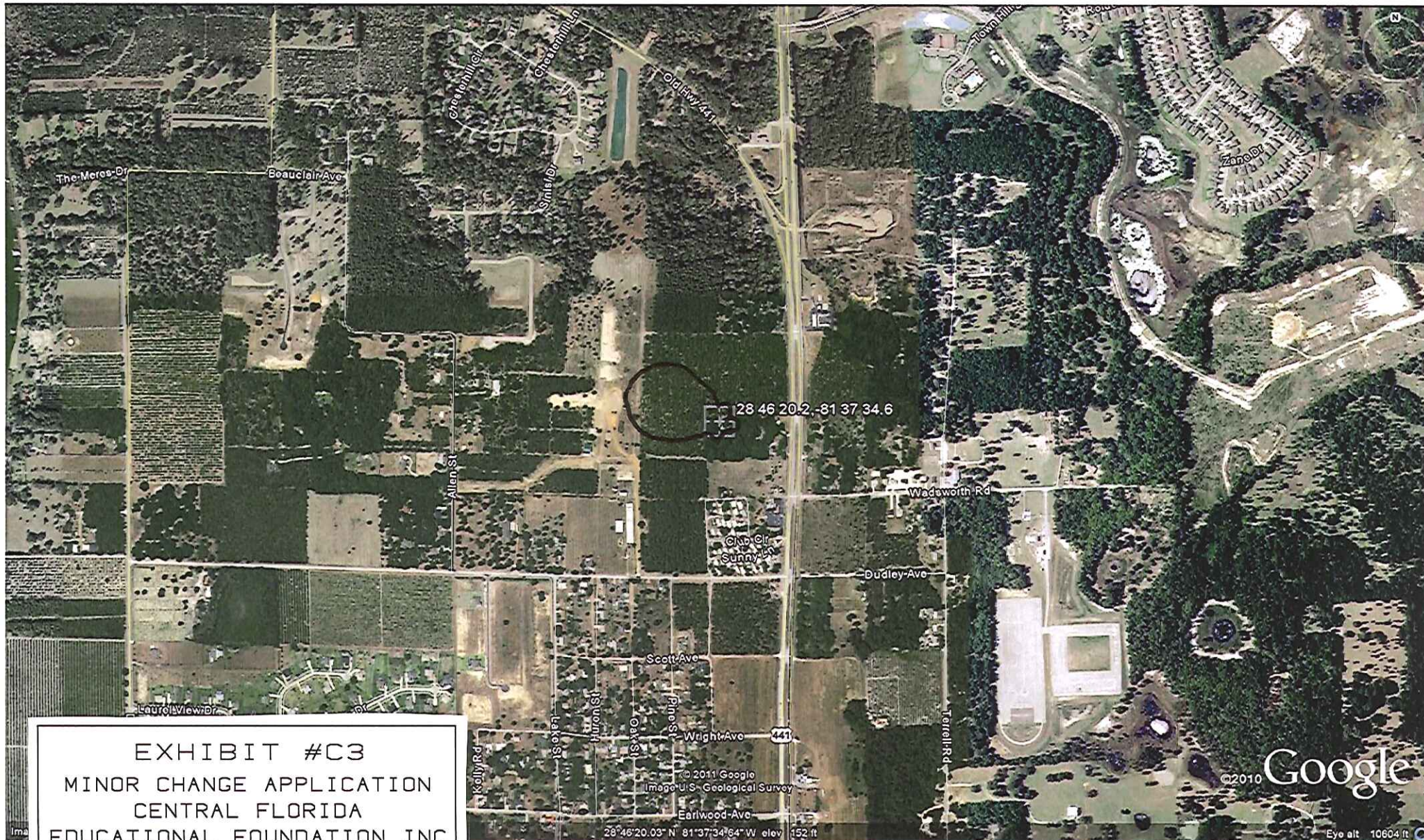


EXHIBIT #C3  
MINOR CHANGE APPLICATION  
CENTRAL FLORIDA  
EDUCATIONAL FOUNDATION INC  
W241BL FM TRANSLATOR  
MOUNT DORA, FLORIDA  
August 2011



**MINOR CHANGE APPLICATION**  
**CENTRAL FLORIDA EDUCATIONAL FOUNDATION, INC.**  
**W241BL FM TRANSLATOR STATION**  
**CH 241D - 96.1 MHZ - 0.115 KW (DA)**  
**MOUNT DORA, FLORIDA**  
**August 2011**

**EXHIBIT C4**

Predicted Contour:

N. Lat. = 28 46 19.0 - Tabulated Protected and Interfering Contour Data  
W. Lng. = 81 37 35.0 - W241BL FM Translator - Mount Dora, Florida

HAAT and Distance to Contour - NGDC 30 Second terrain database										
Azi.	AV EL	HAAT	ERP kW	dBk	Field	60-F5	40-F1	54-F1	100-F1	109.45-F1
000	35.9	83.8	0.0028	-25.48	0.157	3.84	12.18	5.49	0.12	0.04
010	36.9	82.8	0.0031	-25.04	0.165	3.92	12.40	5.59	0.12	0.04
020	32.3	87.4	0.0036	-24.38	0.178	4.19	13.19	5.96	0.13	0.05
030	26.8	92.9	0.0046	-23.37	0.200	4.60	14.42	6.52	0.15	0.05
040	24.2	95.5	0.0046	-23.37	0.200	4.67	14.64	6.62	0.15	0.05
050	20.0	99.7	0.0036	-24.43	0.177	4.47	14.06	6.38	0.13	0.04
060	18.7	101.0	0.0022	-26.60	0.138	3.94	12.51	5.68	0.10	0.03
070	21.5	98.2	0.0015	-28.18	0.115	3.51	11.31	5.10	0.09	0.03
080	18.9	100.8	0.0019	-27.11	0.130	3.81	12.15	5.51	0.10	0.03
090	22.9	96.8	0.0029	-25.31	0.160	4.18	13.18	5.98	0.12	0.04
100	26.0	93.7	0.0036	-24.43	0.177	4.33	13.62	6.17	0.13	0.04
110	25.5	94.2	0.0044	-23.59	0.195	4.57	14.34	6.49	0.15	0.05
120	28.7	91.0	0.0036	-24.43	0.177	4.27	13.42	6.08	0.13	0.04
130	31.4	88.3	0.0029	-25.31	0.160	3.98	12.60	5.70	0.12	0.04
140	27.1	92.6	0.0019	-27.11	0.130	3.65	11.67	5.27	0.10	0.03
150	25.8	93.9	0.0015	-28.18	0.115	3.44	11.08	4.98	0.09	0.03
160	20.4	99.3	0.0022	-26.60	0.138	3.91	12.41	5.63	0.10	0.03
170	19.6	100.1	0.0036	-24.43	0.177	4.48	14.09	6.39	0.13	0.04
180	19.2	100.5	0.0046	-23.37	0.200	4.80	15.23	6.79	0.15	0.05
190	18.9	100.8	0.0046	-23.37	0.200	4.81	15.26	6.80	0.15	0.05
200	19.2	100.5	0.0036	-24.38	0.178	4.50	14.16	6.42	0.13	0.05
210	19.7	100.0	0.0031	-25.04	0.165	4.32	13.60	6.17	0.12	0.04
220	20.4	99.3	0.0028	-25.48	0.157	4.19	13.22	6.00	0.12	0.04
230	21.5	98.2	0.0064	-21.97	0.235	5.16	16.63	7.24	0.18	0.06
240	22.7	97.0	0.0190	-17.20	0.407	6.73	22.41	9.49	0.31	0.10
250	22.5	97.2	0.0411	-13.86	0.598	8.13	27.20	11.46	0.45	0.15
260	22.5	97.2	0.0687	-11.63	0.773	9.28	31.00	12.97	0.58	0.20
270	19.0	100.7	0.0927	-10.33	0.898	10.16	34.35	14.22	0.68	0.23
280	18.5	101.2	0.1060	-9.75	0.960	10.52	35.72	14.77	0.72	0.24
290	18.5	101.2	0.1150	-9.39	1.000	10.73	36.50	15.27	0.75	0.25
300	19.5	100.2	0.1060	-9.75	0.960	10.47	35.51	14.68	0.72	0.24
310	20.3	99.4	0.0927	-10.33	0.898	10.10	34.11	14.13	0.68	0.23
320	21.0	98.7	0.0687	-11.63	0.773	9.35	31.27	13.06	0.58	0.20
330	22.9	96.8	0.0411	-13.86	0.598	8.11	27.12	11.44	0.45	0.15
340	32.9	86.8	0.0190	-17.20	0.407	6.35	21.09	8.98	0.31	0.10
350	34.3	85.4	0.0064	-21.97	0.235	4.79	15.18	6.74	0.18	0.06

AMSL= 119.7