

Pittsburgh, PA

REFERENCE			
40	24	18	N
79	51	23	W

CH CITY	CALL	TYPE STATE		AZI. ---	DIST FILE #	LAT. LNG.	Pwr (kW) HAAT (M)	COR (M) INT (km)	PRO (km) LICENSEE	*IN* (Overlap	*OUT* in km)
288D Pittsburgh	W288BO	CP PA	C	264.2 84.2	8.79 BNPFT20030827AMX	40 23 49 79 57 34	0.010 156	442 24.4	7.2 Educational Media Foundati	-22.26	-20.60
290B Pittsburgh	WXDXFM	LIC PA	CN	312.0 132.0	14.29 BLH5106	40 29 27 79 58 55	72.000 138	432 6.3	67.0 Capstar Tx Limited Partner	0.77	-53.18*
288B1 Bethlehem	WUKL	LIC WV	NCN	241.9 61.9	82.20 BLH19940502KA	40 03 17 80 42 26	13.500 50	412 91.4	29.1 Keymarket Licenses , Llc	-15.29	28.93
288B1 Brookville	WMKX«	LIC PA	NC	39.6 219.6	104.03 BLH19980611KC	41 07 21 79 03 51	16.000 156	595 112.9	48.9 Strattan Broadcasting, Inc	-15.08	30.44
287B Frostburg	WFRBFM	LIC MD	CN	136.3 316.3	110.39 BLH19851104KE	39 41 02 78 57 57	13.500 250	966 72.9	62.2 Wtbo-wkgo Corporation, L1	31.60	36.59
286D Waynesburg	W286AL	CP PA	C	201.7 21.7	63.93 BNPFT20030828ANI	39 52 12 80 08 01	0.010 196	529 0.2	8.1 Broadcast Communications,	56.35	55.58
289D Johnstown	WUZIF1	LIC PA	CN	96.1 276.1	80.30 BLFTB20010403ABL	40 19 28 78 55 01	0.250 -186	405 10.1	7.1 Forever Broadcasting, Llc	63.29	63.51
289A Portage	WUZI	LIC PA	CN	91.0 271.0	101.73 BLH19901221KB	40 22 59 78 39 31	3.000 181	741 47.5	31.6 Forever Broadcasting, Llc	47.50	60.63

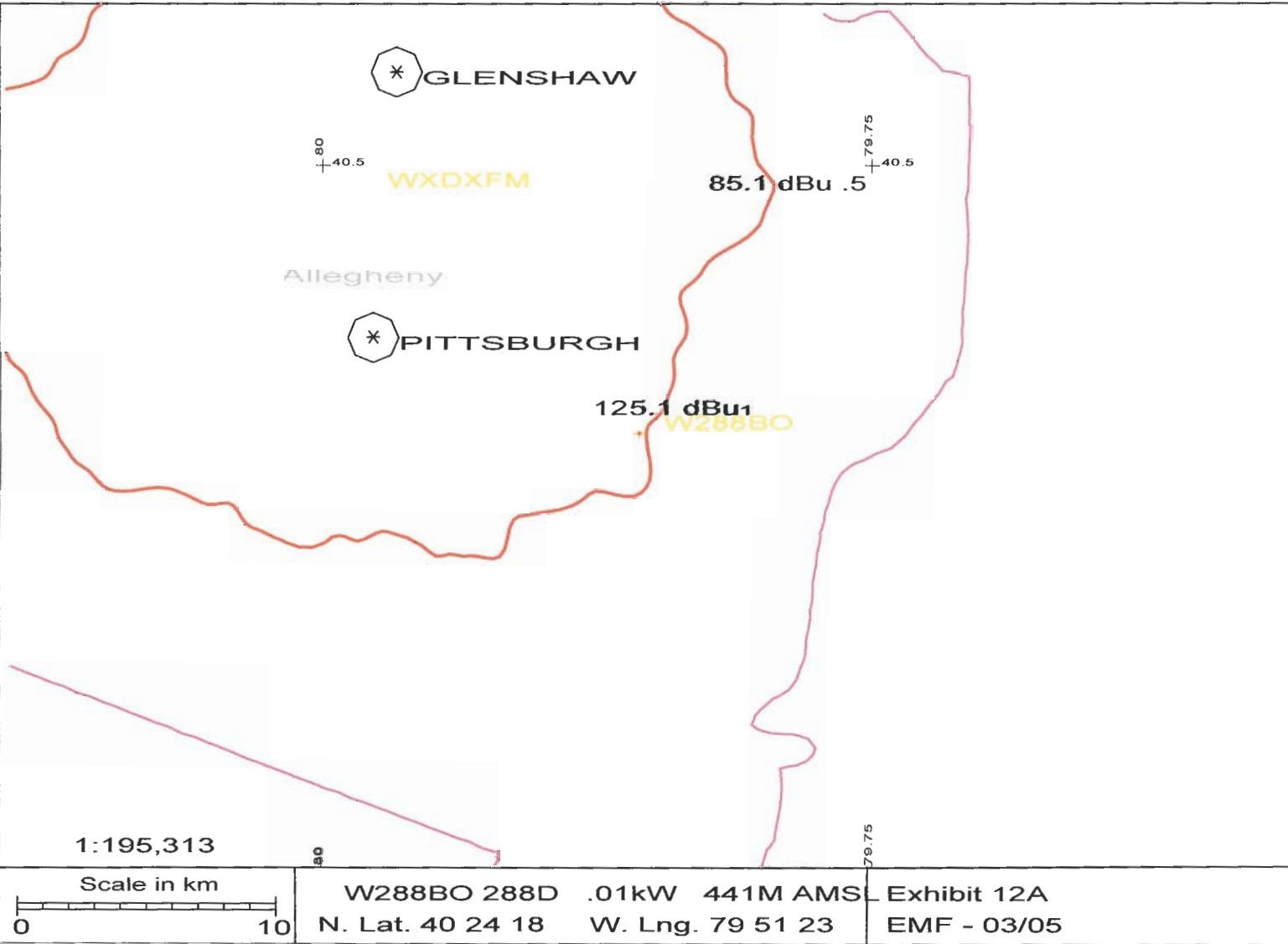
ERP and HAAT are on direct line to and from reference station.
 "*"Affixed to 'IN' or 'Out' values = site inside protected contour.
 "«" = Station meets FCC minimum distance spacing for its class.

Exhibit 12 (Compliance with CFR 74.1204)

The proposed FM Translator is located within the protected 60 dBu contour of second adjacent channel station WDX, channel 290B, Pittsburgh, PA. The predicted F(50-50) field strength of WDX at the proposed translator site is 85.1 dBu, see Exhibit 12A. Therefore, the respective predicted interfering contour generated by the proposed FM Translator is 125.1 dBu. This interfering contour extends less than 12 meters from the proposed transmit antenna, and the area of overlap does not reach the ground (the antenna will be mounted at the 70 meter level on a 107 meter tower).

To confirm the absence of population within the interference aperture, EMF has examined the attached topographic map, which indicates a lack of structures near the proposed tower, and therefore no structure which could be tall enough to enter the 12-meter interference aperture.

Therefore, EMF respectfully requests a waiver of C.F.R. 74.1204 based on no population within the area of predicted interference.



Protected zones report for W288BO on channel 288 03-07-2005
N. Lat. 40 24 18 W. Lng. 79 51 23, ERP= 0.01 kw, HAAAT= 167.9M

Station must coordinate with Canada. Distance = 220.4227 km.
Facility okay with respect to Mexico.
Facility is okay with respect to AM station towers.
Facility is okay with respect to FCC monitoring stations.
Facility is okay toward West Virginia Quiet Zone.
Facility okay toward Table Mountain.

Tower ID: 1027462

Coordinates (NAD27): 40-24-18.05 N, 079-51-22.52 W

Coordinates (NAD83): 40-24-18.30 N, 079-51-21.70 W

Status: Constructed

Structure Type: TOWER

Action Date: 02/26/2005

Construction Date: 07/15/1996

Location: 1054 LOCUST STREET, NORTH BRADDOCK, PA

Height (AG): 112.80 m, Elevation: 370.60 m, Structure Height: 106.60 m

Circular Number: 70/7460-IJ

FAA Number: 2003-AEA-375-OE FAA Chapter: 4, 8, 13

Owner: Crown Communication Inc.

Address:

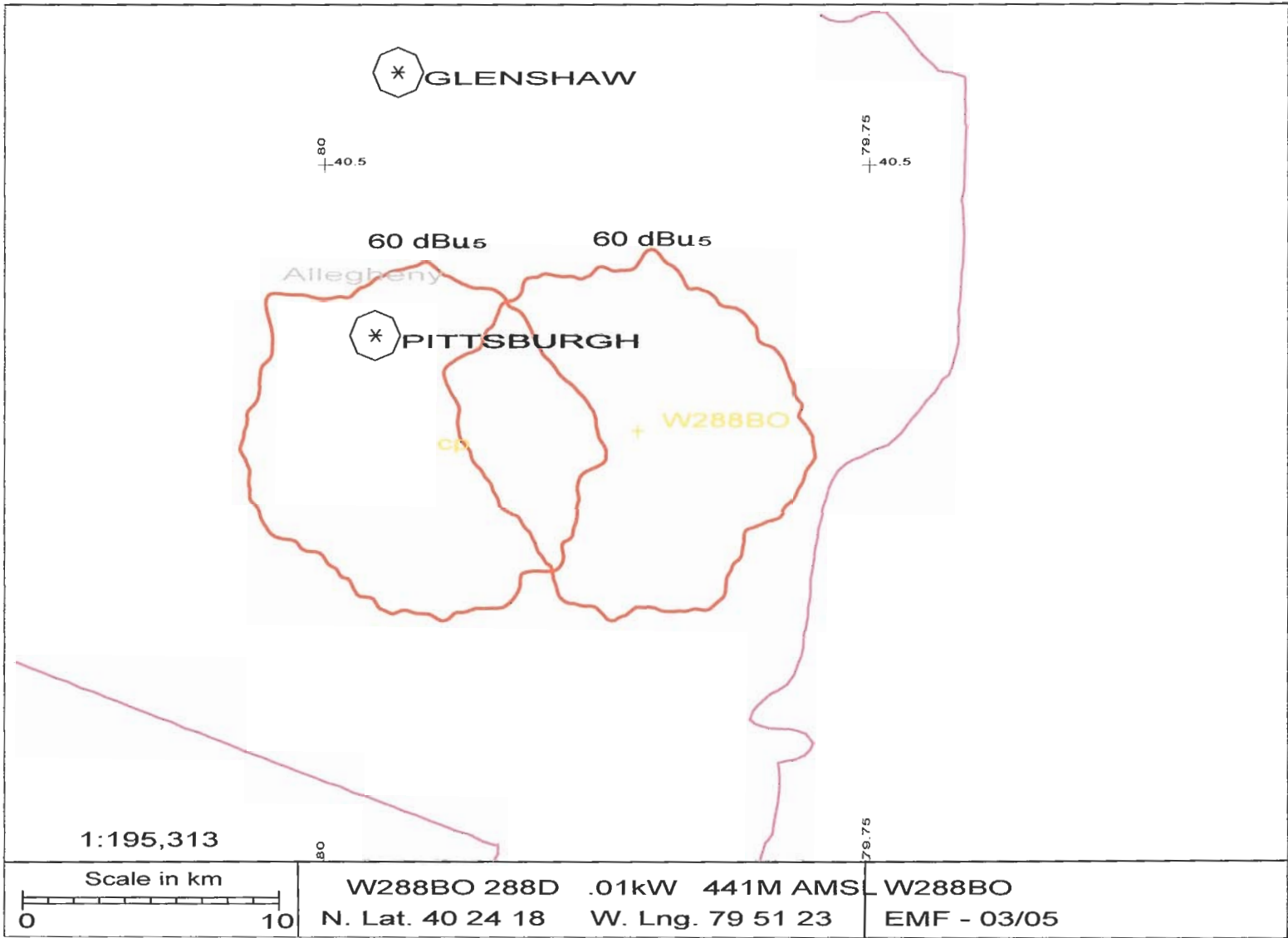
Regulatory Department

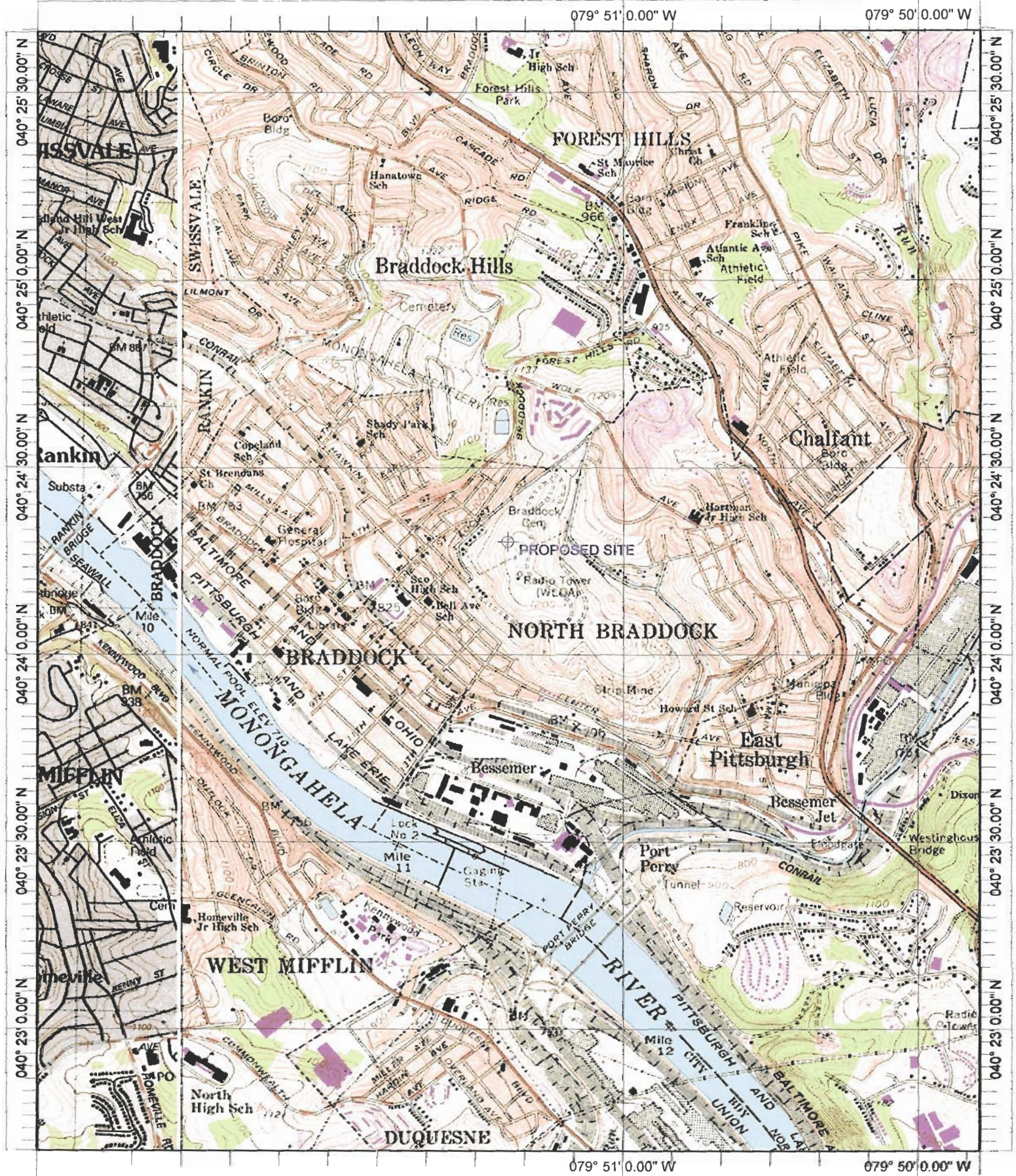
2000 Corporate Drive

Canonsburg, PA 15317

Phone: (724) 416-2000

Internet Address: Monica.Gambino@Crowncastle.com





Name: BRADDOCK
Date: 3/7/2005
Scale: 1 inch equals 2000 feet

Location: 040° 24' 10.1" N 079° 51' 23.3" W
Caption: Exhibit 12
Site at 40-24-18 / 79-51-23