

Channel Study

REFERENCE CH# 276D - 103.1 MHz, Pwr= 0.01 kW DA, HAAT= 825.6 M, COR= 1172 M DISPLAY DATES
 37 06 38.0 N. Average Protected F(50-50)= 15.8 km DATA 09-03-15
 121 50 34.0 W. Standard Directional SEARCH 09-04-15

CH CITY	CALL	TYPE	ANT STATE	AZI. <--	DIST FILE #	LAT. LNG.	Pwr (kW) HAAT(M)	INT(km) COR(M)	PRO(km) LICENSEE	*IN* (Overlap	*OUT* in km)
276D Santa Cruz	K276BR!	LIC	CN CA	241.6 61.5	23.18 BLFT19840319MQ	37 00 41.0 122 04 20.0	0.005 1034	54.2 1183	12.8 Richard S. Bushell	-46.5	-48.8
273B Salinas	KDON-FM	LIC	CX CA	142.3 322.5	49.69 BLH20040723ABH	36 45 23.0 121 30 05.0	15.000 723	7.3 1018	92.6 Cc Licenses, Llc	37.1	-43.0*<
275B Berkeley	KBLX-FM	LIC	CX CA	321.0 140.7	82.93 BLH20141219ACO	37 41 21.0 122 26 08.0	7.200 387	82.2 445	68.8 Entercom License, Llc	-0.4<	10.0
275B Berkeley	KBLX-FM	LIC	CX CA	321.0 140.7	82.89 BMLH20131127BJS	37 41 20.0 122 26 07.0	6.600 393	81.5 450	68.2 Entercom License, Llc	0.2<	10.6
277B Modesto	KATM	LIC	CN CA	39.8 220.1	67.34 BLH19840418DD	37 34 30.0 121 21 13.0	50.000 152	45.3 434	36.1 Radio License Holding Cbc,	11.5	2.5
277D San Martin	K277BN	LIC	DH CA	75.1 255.3	24.85 BLFT20090306ACM	37 10 03.0 121 34 20.0	0.023 229	0.7 670	0.3 Coyote Communications, Inc	13.3	5.2
277D Watsonville	K277AH	LIC	DHN CA	162.5 342.5	27.00 BLFT19960910TG	36 52 43.0 121 45 04.0	0.053 -9	6.3 68	4.4 Wolfhouse Radio Group, Inc	11.9	6.5
276L1 Salinas	KIPW-LP	CP		158.5 338.7	52.98 BMPL20150820CNE	36 39 58.7 121 37 29.8	0.100 -47			26.5	9.2
279B San Francisco	KOSF	LIC	CX CA	321.0 140.6	82.82 BLH20130429AEC	37 41 17.0 122 26 07.0	6.400 403	4.7 446	67.7 Amfm Broadcasting Licenses	76.9	15.1
277D Santa Clara	KSCU	LIC	CX CA	342.1 162.0	27.62 BLED20080721AAI	37 20 50.0 121 56 21.0	0.030 -2	5.9 73	4.1 Santa Clara University	20.2	20.6
278A Salinas	KRAY-FM	LIC	NCN CA	149.8 329.9	56.31 BLH19930616KC	36 40 20.0 121 31 28.0	2.500 156	2.9 432	35.2 Wolfhouse Radio Group, Inc	47.2	21.0
275D Pleasanton	KBLX-FM2	LIC	DV CA	355.6 175.6	85.87 BLFTB20010302ABP	37 52 55.0 121 55 05.0	0.185 927	55.2 1155	36.5 Entercom License, Llc	27.7	43.8
276B1 Oakhurst	KAAT	LIC	C CA	78.3 259.7	199.73 BLH20000309AAY	37 27 10.0 119 37 54.0	25.000 -59	155.5 1468	74.5 Casa Media Partners, Llc	33.6	69.8
279D Pleasanton, Etc.	KOSF-FM2	LIC	DVN CA	355.6 175.5	85.84 BLFTB19990225UA	37 52 54.0 121 55 05.0	0.185 1000	0.9 1155	36.5 Amfm Broadcasting Licenses	82.0	49.3
277D San Francisco	K277CH	LIC	DC CA	320.9 140.6	82.49 BLFT20150805AAX	37 41 07.0 122 26 01.0	0.010	15.6 422	10.8 Broadcast Towers, Inc.	65.7	69.5
275D Patterson	K275CE	CP	C CA	51.8 232.3	94.79 BNPFT20130822AFR	37 38 03.0 120 59 50.0	0.070 51	9.9 74	6.9 The Association For Commun	73.5	67.6

Terrain database is FCC NGDC 30 Sec, R= 73.215 qualifying spacings or FCC minimum spacings in KM, M= Margin in KM

Contour distances are on direct line to and from reference station. Reference Zone= East Zone 2A, Co to 3rd adjacent.

Ant Column: (D= DA Standard, Z= DA 73.215, N= Not DA 73.215, _= Omni), Polarization (C,H,V,E), Beamtilt(Y,N,X)

***affixed to 'IN' or 'OUT' values = site inside restricted contour.

< = Contour Overlap

Exhibit 13-A

FMCommander Single Allocation Study - 09-11-2015 - FCC NGDC 30 Sec
K276BR.P's Overlaps (In= -0.41 km, Out= 10.02 km)

K276BR.P CH 276 D DA
Lat= 37 06 38.0, Lng= 121 50 34.0
0.01 kW 825.6 M HAAT, 1172 M COR
Prot.= 60 dBu, Intef.= 48 dBu

KBLX-FM CH 275 B BLH20141219ACO
Lat= 37 41 21.0, Lng= 122 26 08.0
7.2 kW 387 M HAAT, 445 M COR
Prot.= 54 dBu, Intef.= 54 dBu

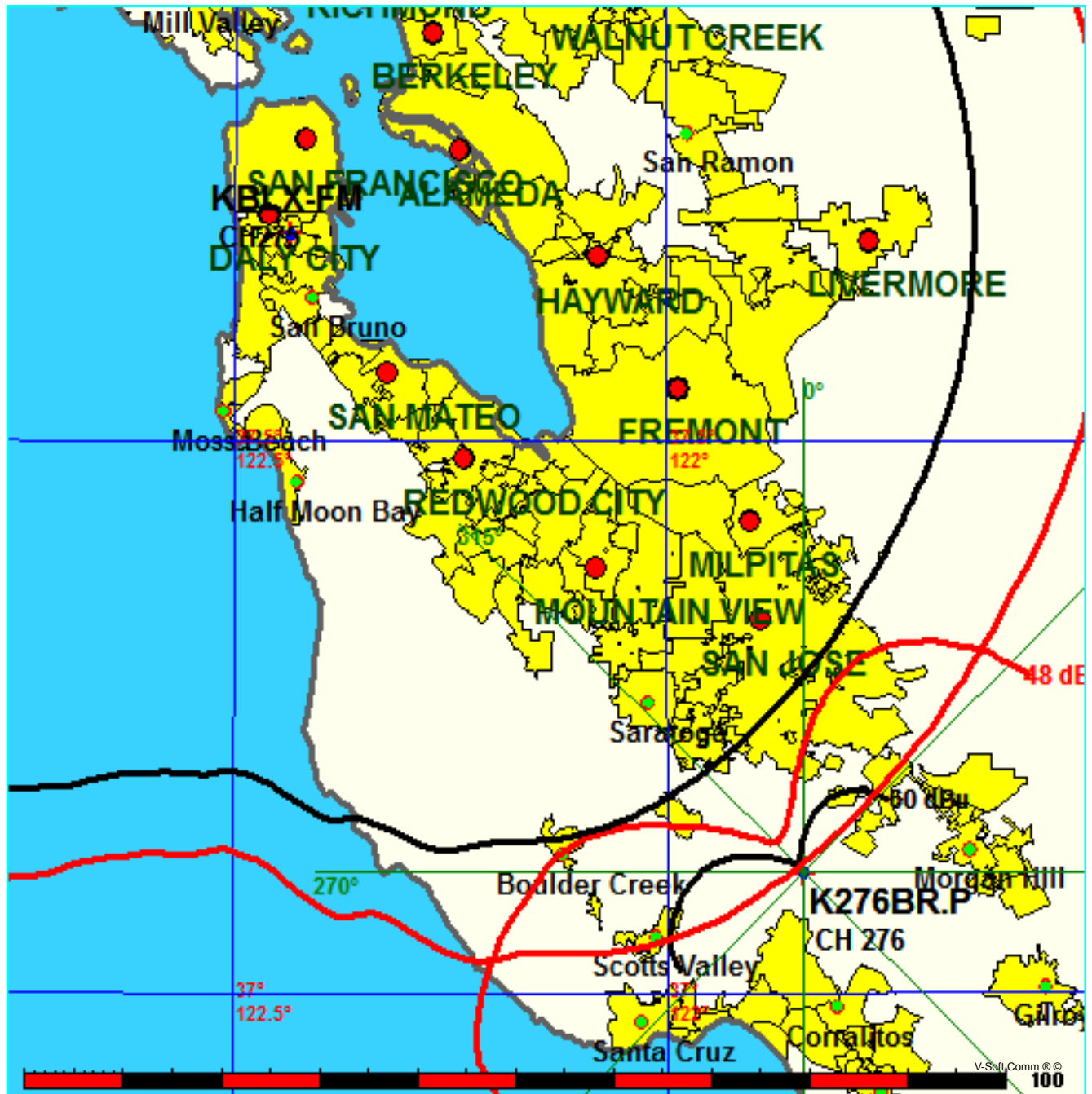


Exhibit 13-B

FMCommander Single Allocation Study - 09-11-2015 - FCC NGDC 30 Sec
K276BR.P's Overlaps (In= 0.22 km, Out= 10.56 km)

K276BR.P CH 276 D DA
Lat= 37 06 38.0, Lng= 121 50 34.0
0.01 kW 825.6 M HAAT, 1172 M COR
Prot.= 60 dBu, Intef.= 48 dBu

KBLX-FM CH 275 B BMLH20131127BJS
Lat= 37 41 20.0, Lng= 122 26 07.0
6.6 kW 393 M HAAT, 450 M COR
Prot.= 54 dBu, Intef.= 54 dBu

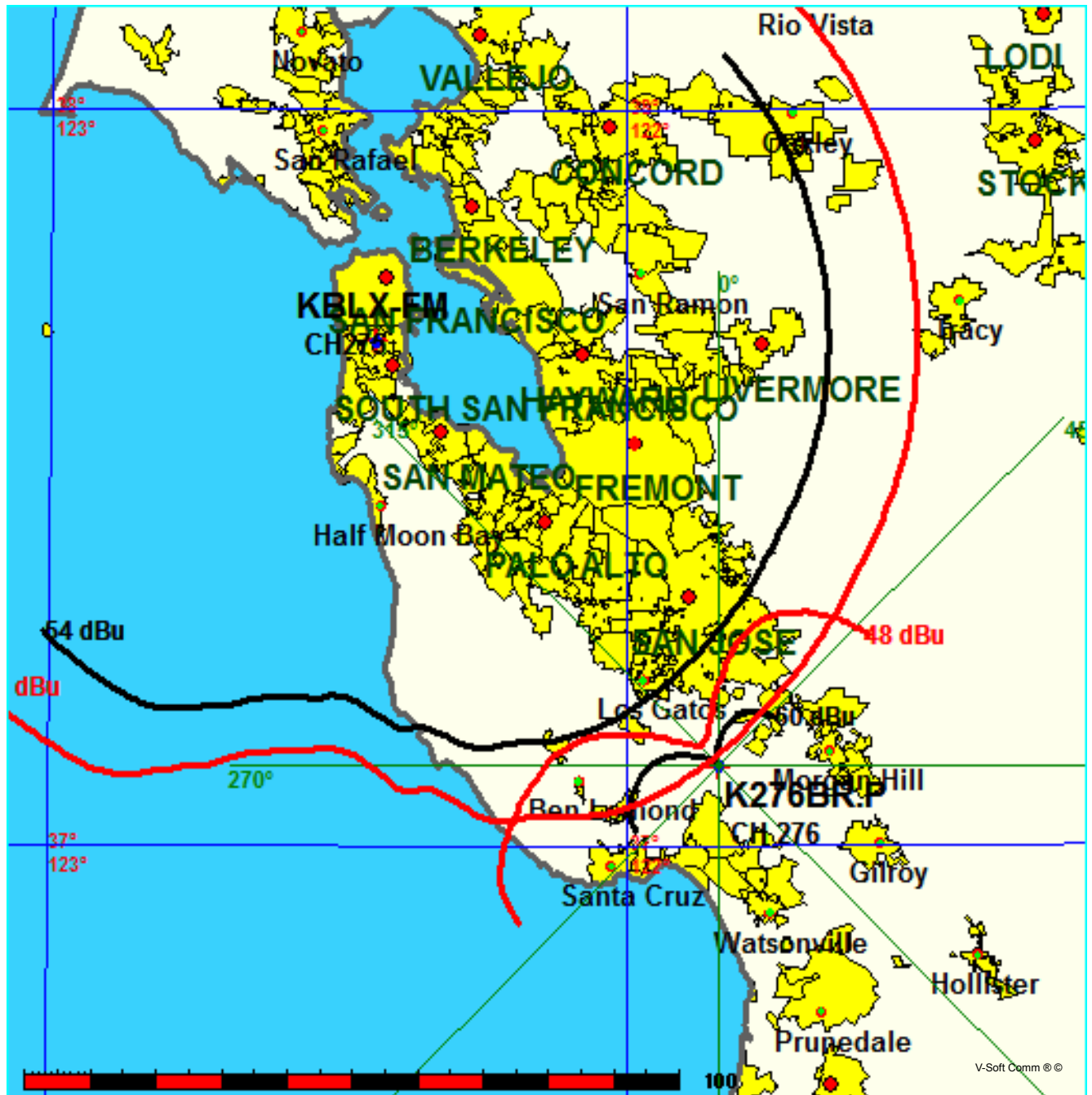


Exhibit 13-C

FMCommander Single Allocation Study - 09-11-2015 - FCC NGDC 30 Sec
K276BR.P's Overlaps (In= 11.52 km, Out= 2.46 km)

K276BR.P CH 276 D DA
Lat= 37 06 38.0, Lng= 121 50 34.0
0.01 kW 825.6 M HAAT, 1172 M COR
Prot.= 60 dBu, Intef.= 48 dBu

KATM CH 277 B BLH19840418DD
Lat= 37 34 30.0, Lng= 121 21 13.0
50.0 kW 152 M HAAT, 434 M COR
Prot.= 54 dBu, Intef.= 54 dBu

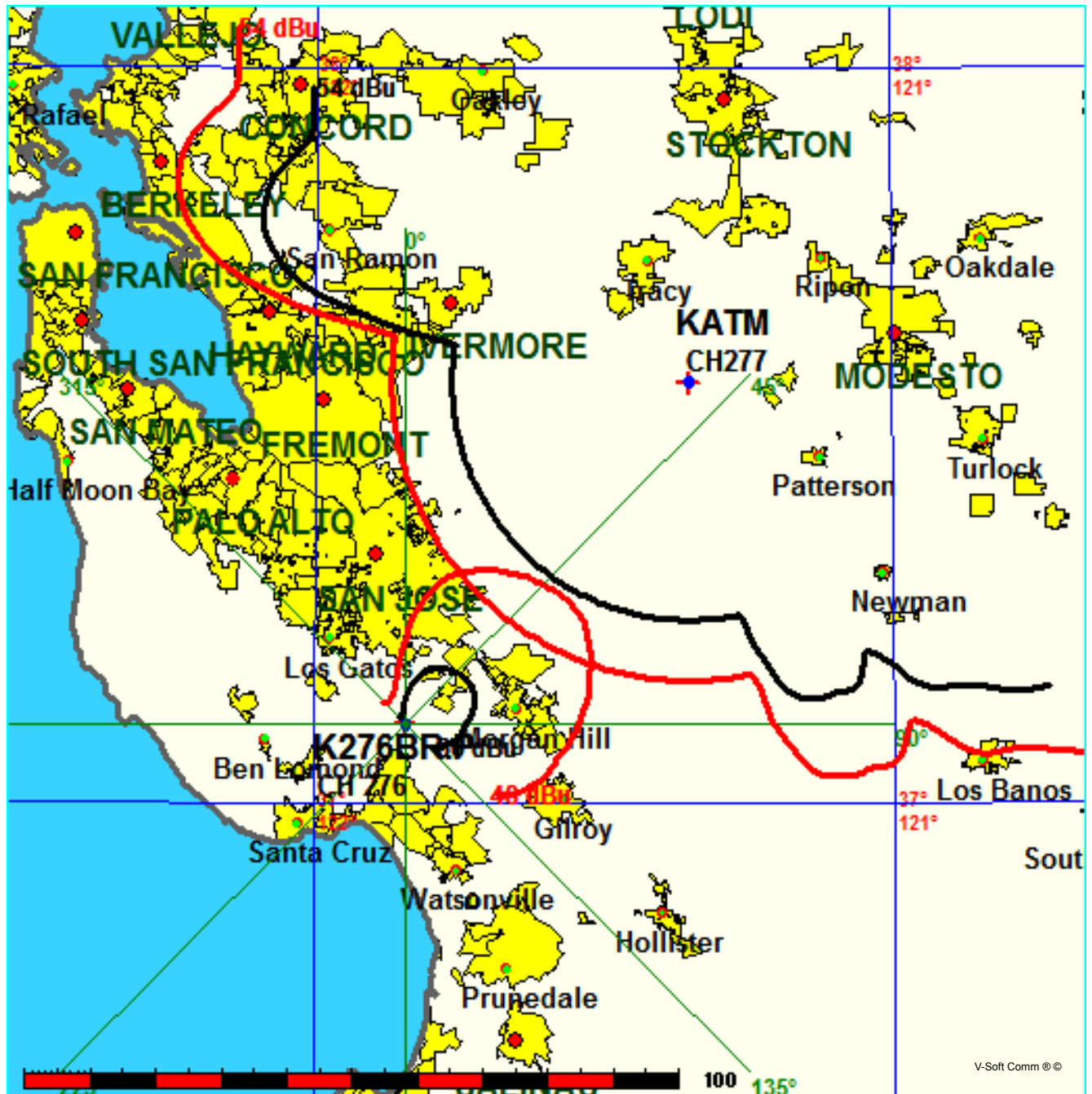


Exhibit 13-D

FMCommander Single Allocation Study - 09-11-2015 - FCC NGDC 30 Sec
K276BR.P's Overlaps (In= 13.33 km, Out= 5.19 km)

K276BR.P CH 276 D DA
Lat= 37 06 38.0, Lng= 121 50 34.0
0.01 kW 825.6 M HAAT, 1172 M COR
Prot.= 60 dBu, Intef.= 54 dBu

K277BN CH 277 D DA BLFT20090306ACM
Lat= 37 10 03.0, Lng= 121 34 20.0
0.023 kW 228.7 M HAAT, 670 M COR
Prot.= 60 dBu, Intef.= 54 dBu

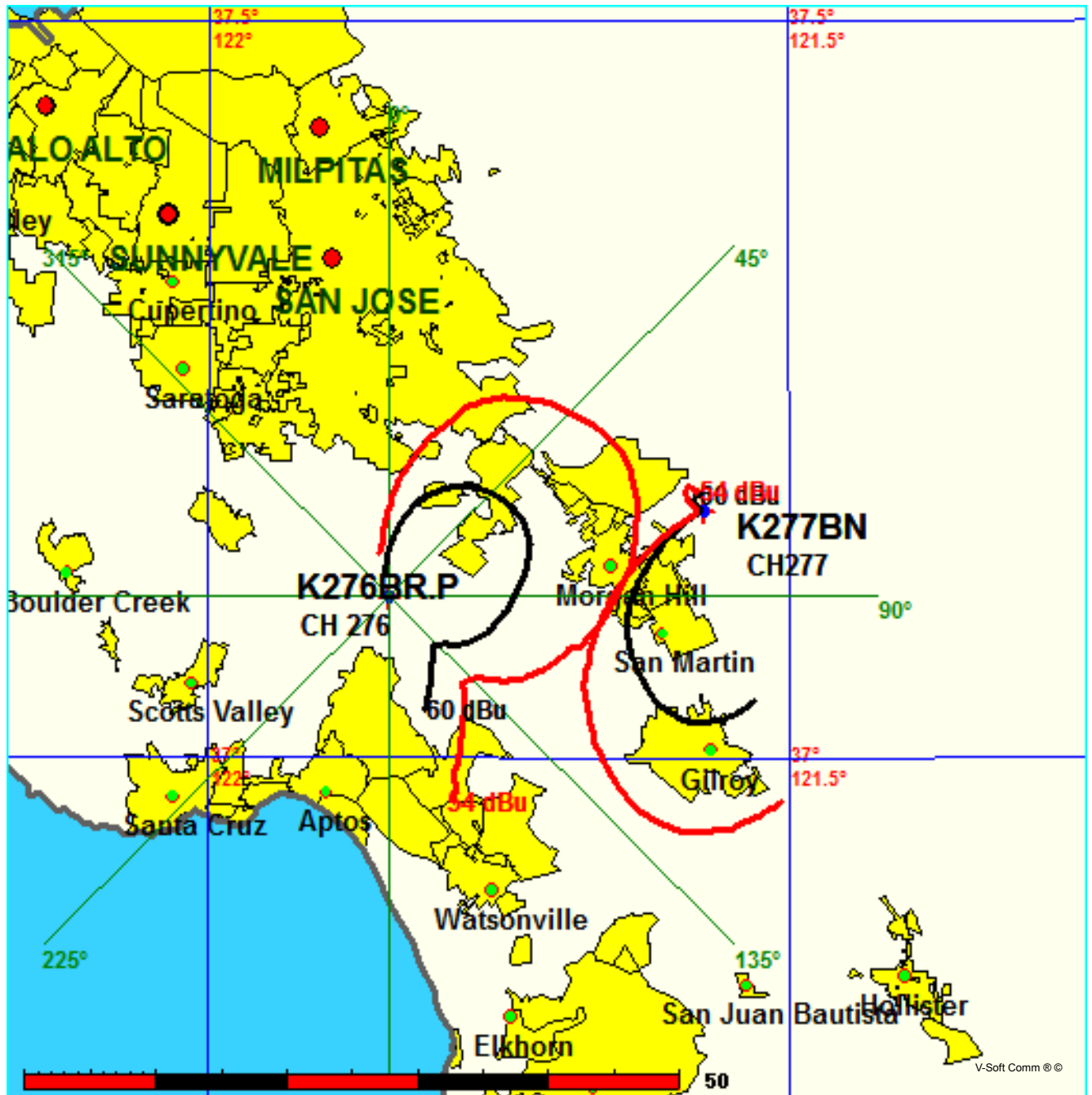


Exhibit 13-E

FMCommander Single Allocation Study - 09-11-2015 - FCC NGDC 30 Sec
K276BR.P's Overlaps (In= 11.86 km, Out= 6.49 km)

K276BR.P CH 276 D DA
Lat= 37 06 38.0, Lng= 121 50 34.0
0.01 kW 825.6 M HAAT, 1172 M COR
Prot.= 60 dBu, Intef.= 54 dBu

K277AH CH 277 D DA BLFT19960910TG
Lat= 36 52 43.0, Lng= 121 45 04.0
0.053 kW -9 M HAAT, 68 M COR
Prot.= 60 dBu, Intef.= 54 dBu

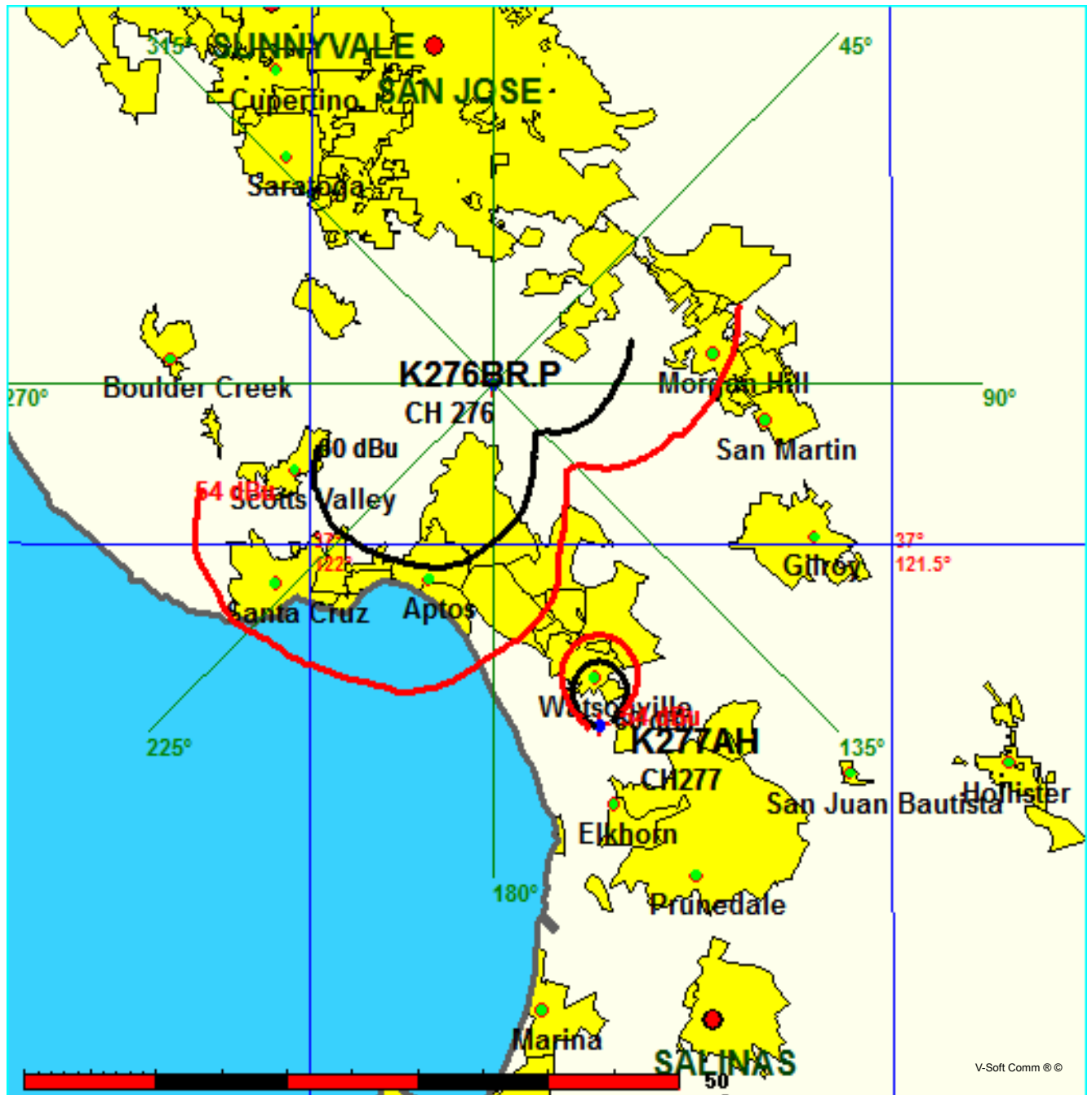
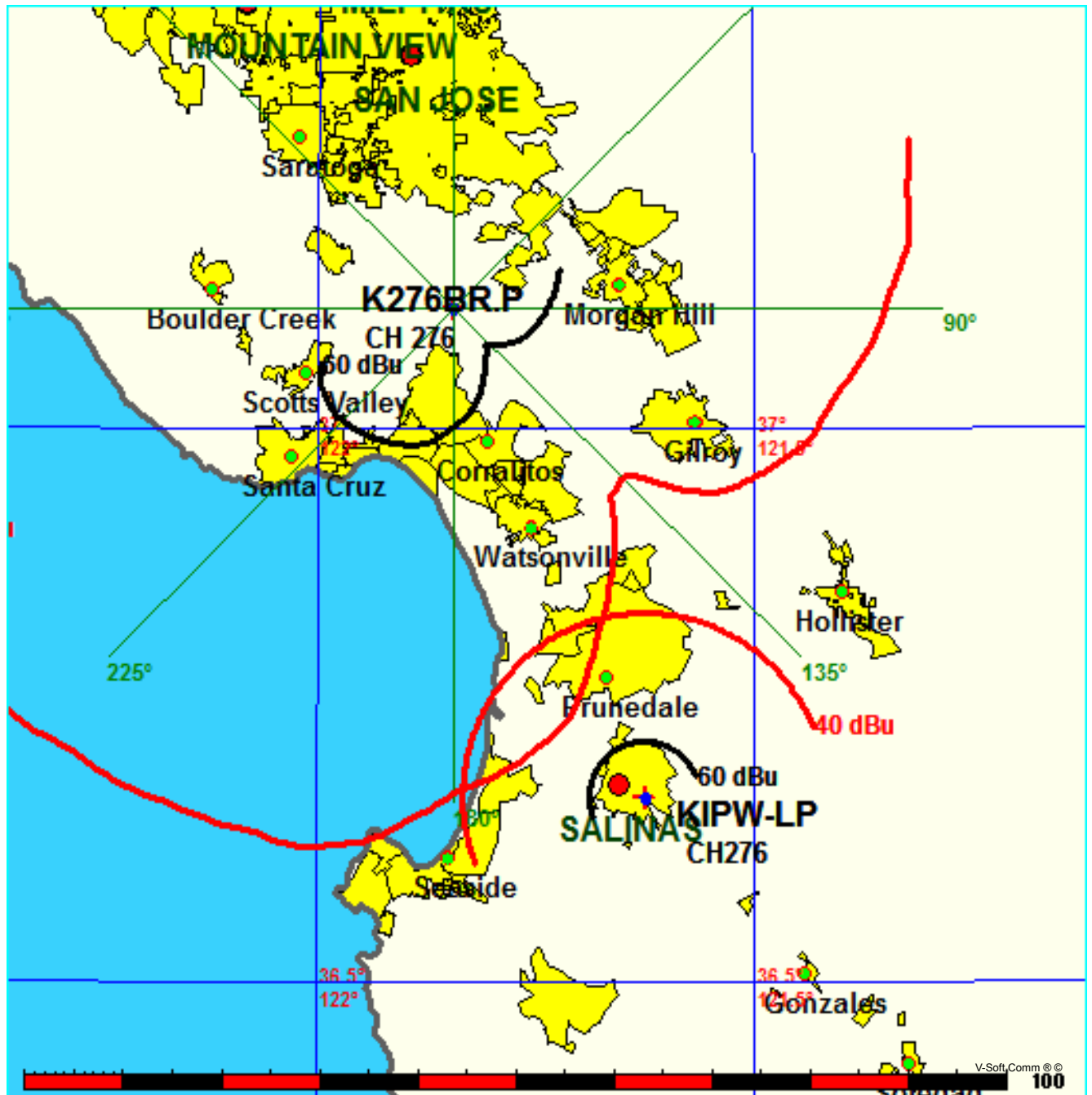


Exhibit 13-F

FMCommander Single Allocation Study - 09-11-2015 - FCC NGDC 30 Sec
K276BR.P's Overlaps (In= 26.47 km, Out= 9.17 km)

K276BR.P CH 276 D DA
Lat= 37 06 38.0, Lng= 121 50 34.0
0.01 kW 825.6 M HAAT, 1172 M COR
Prot.= 60 dBu, Intef.= 40 dBu

KIPW-LP CH 276 L1 BMPL20150820CNE
Lat= 36 39 58.7, Lng= 121 37 29.8
0.1 kW -47.35708 M HAAT, 37 M COR
Prot.= 60 dBu, Intef.= 40 dBu



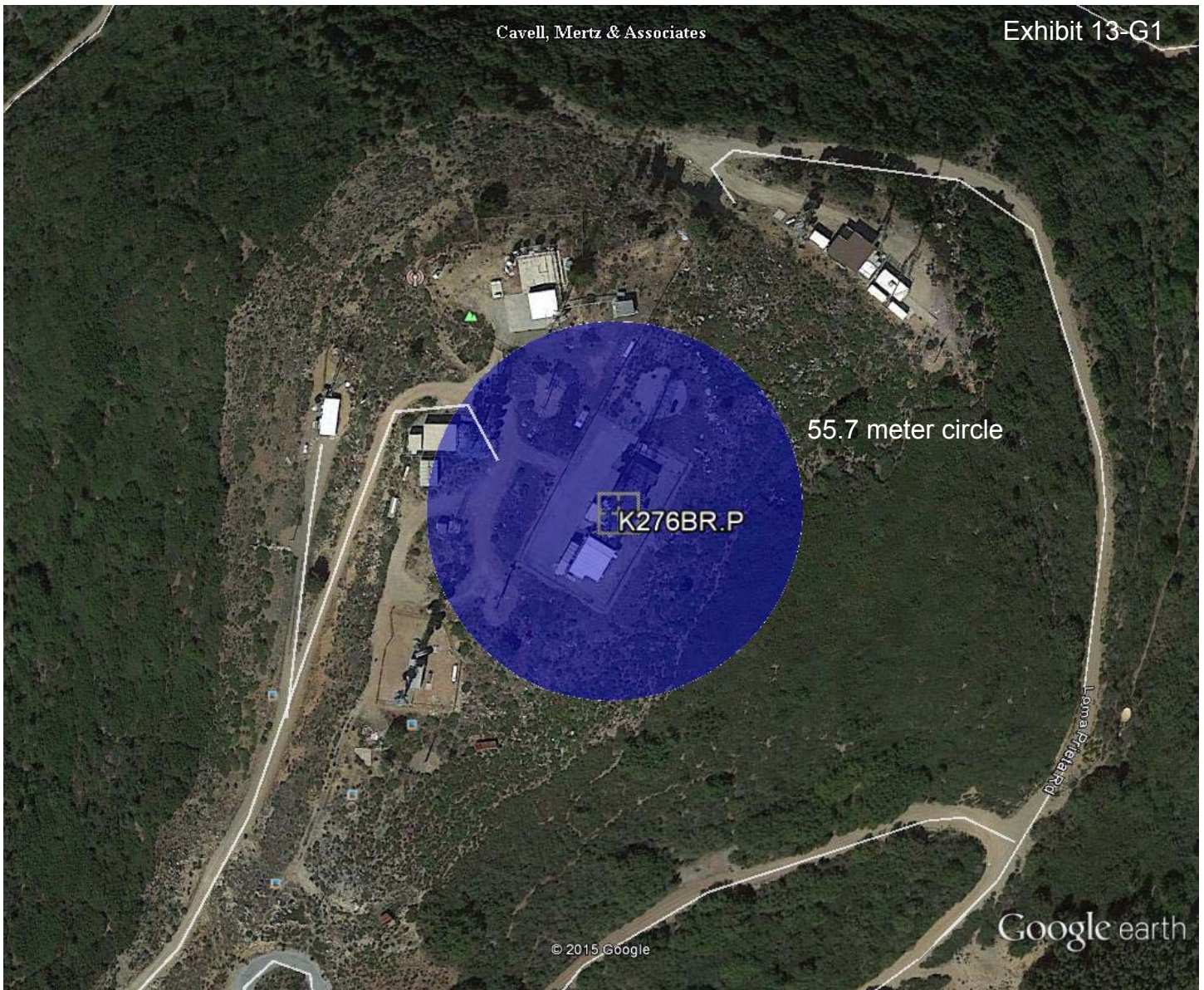
Compliance with C.F.R. 74.1204

The proposed FM Translator is located within the protected 60 dBu contour of third adjacent channel station KDON-FM, channel 273B, Salinas, CA. According to 74.1204(a)(3), in order to protect second and third adjacent facilities, the difference in dBu between the two facilities must not exceed 40dBu.

The proposed ERP for K276BR.P:	10 watts
The proposed COR for K276BR.P:	26 meters
K276BR.P F(50/50) contour at proposed site:	72.0 dBu
The F(50/10) contour of proposed K276BR.P	112.0 dBu
The predicted distance to K276BR.P interference contour:	55.7 meters

The signal is predicted to reach the ground, however as can be seen in Exhibit 13–G1, there are no regularly occupied structures within the 55.7 meter aperture of potential interference.

Therefore, EMF respectfully requests a waiver of C.F.R. 74.1204 based on no population within the area of predicted interference.



Google earth

feet 700
meters 200

