

Mr. Jeff Sadler, VP
OTLighting / Reliable Services
128 McKenzie Meadow Lane
Apex, NC 27539
(o) 919-367-2965
jasadler5@aol.com

Subject: Heathsville, VA
300-ft Guyed Mast
4016 Dodlyt Road, Heathsville, Northumberland County, VA 22473
Latitude: N37° 54' 22"±, Longitude: W076° 29' 08"±
VSi # 07026, FCC # 1018226

Dear Mr. Sadler,

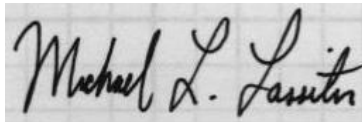
To your request, we present our post-construction inspection letter.

We reviewed the antenna installation drawings by Dielectric dated October 11, 2006, drawing 007A33401. We performed a site visit, including a tower climb on January 16, 2007.

Per our observations, the antenna was installed per the design intent.

We trust you find our work satisfactory. Please do not hesitate to call should you have any questions.

Sincerely,

A handwritten signature in black ink, reading 'Michael L. Lassiter'.

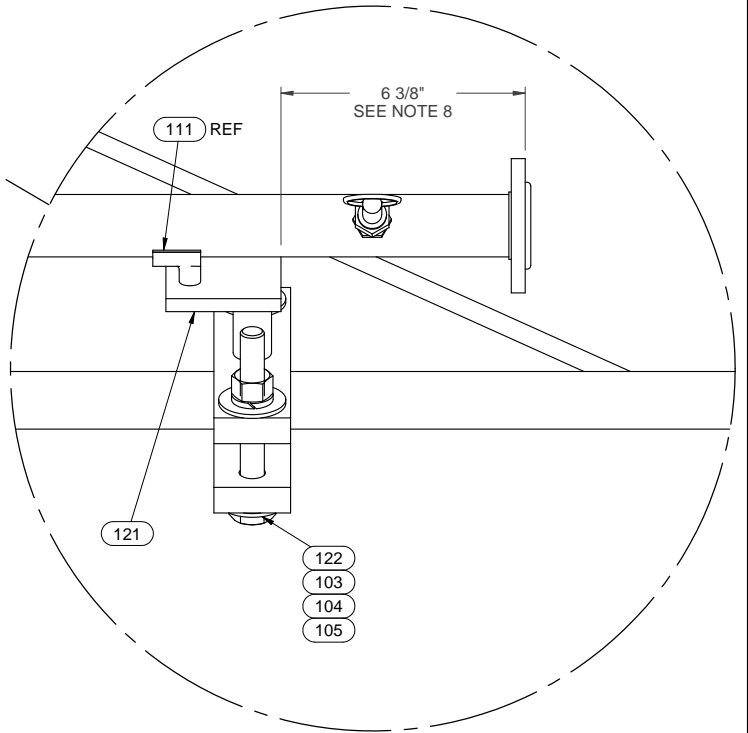
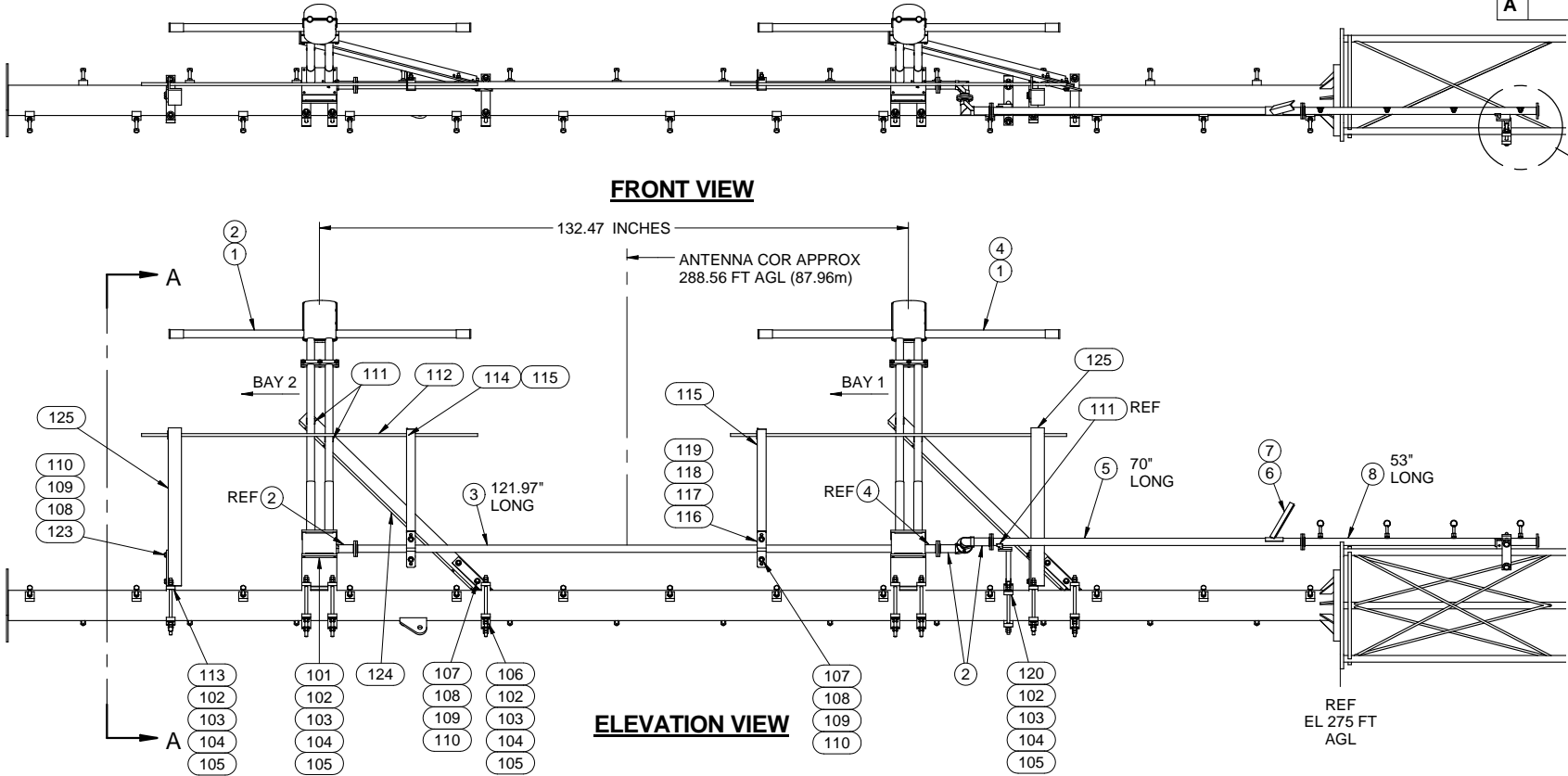
Vertical Solutions, Inc.
Michael L. Lassiter, S.E., P.E., C.W.I.
Structural Engineer, Civil Engineer, and Certified Weld Inspector

Attachments:

- 1) Photo
- 2) Antenna installation drawings





Photo – Antenna Mounting



INSTALLATION NOTES:

- TO ACHIEVE ANY GIVEN PATTERN STUDY PERFORMED BY DIELECTRIC, THE PROVIDED ANTENNA MUST BE INSTALLED AND ORIENTED AS DEPICTED IN THIS DRAWING. IF ANY SUCH PATTERN WAS NOT PROVIDED, THE ANTENNA ORIENTATION AND POSITION IS AT THE DISCRETION OF THE BUYER TO WHICH THE ANTENNA WAS SOLD. SHOULD ANY QUESTIONS ARISE DURING THE INSTALLATION PROCESS, CONTACT DIELECTRIC COMMUNICATIONS AT, 1-800-341-9678, TO ASSIST IN THIS PROCESS; BE PREPARED TO PROVIDE THE PART NUMBER SHOWN BELOW.
 - COMPONENTS ARE MATCH MARKED FOR EASE IN ASSEMBLY.
 - ITEM NUMBERS DEPICTED ON THIS DRAWING CORRESPOND TO ITEM NUMBERS LISTED ON ENCLOSED BILL OF MATERIAL.
 - APPLY THIN LAYER OF DC4 DOW CORNING COMPOUND TO ALL "O"-RING SEALS PRIOR TO ASSEMBLY.
 - UNLESS OTHERWISE SPECIFIED, THE TOP BAY MUST NOT BE LOCATED ANY CLOSER THAN 5 ft. BELOW THE TOWER TOP.
 - BAY TAP POINT DIRECTION INDICATED BY ARROWS LOCATED IN THE BAY IN ELEVATION VIEW.
 - THE VARIABLE TRANSFORMER IS SHIPPED WITH ALL PROBES FULLY INSERTED. AT INSTALLATION, BE CERTAIN TO LOOSEN LOCKNUTS AND PULL ALL PROBES TO FULL OUTWARD POSITION. ALL PROBES MUST BE IN FULL OUTWARD POSITION BEFORE POWERING UP ANTENNA. REFER TO INSTRUCTION MANUAL FOR TUNING INSTRUCTIONS.
 - SUGGESTED LOCATION FOR TERMINATION MOUNT. LOCATION MAY VARY PER TOWER DESIGN.
 - FOR HEATED ANTENNAS ONLY: HEATER HARNESS TO BE DRESSED AND SECURED TO TOWER PER INSTALLERS DISCRETION. LOOSE OR DANGLING WIRE IN RF FIELD WILL SHORT AND RESULT IN ANTENNA FAILURE.
 - REFER TO DRAWING A88212 FOR ALL HARDWARE TORQUE SPECIFICATIONS.
- * FOR FIBERGLASS APPLICATIONS, TORQUE MOUNTING HARDWARE TO 180 in-lbs (15 ft-lbs)
- IT IS IMPORTANT TO MAINTAIN DOCUMENT FOR HISTORICAL PURPOSES. THE MOST CRITICAL PORTION OF INFORMATION TO BE MAINTAINED IS THE PART NUMBER AS SPECIFIED.
 - AFTER ANTENNA HAS BEEN INSTALLED AND TUNED ON THE TOWER, IT IS REQUESTED THAT A COPY OF THE TEST DATA BE FORWARDED TO:

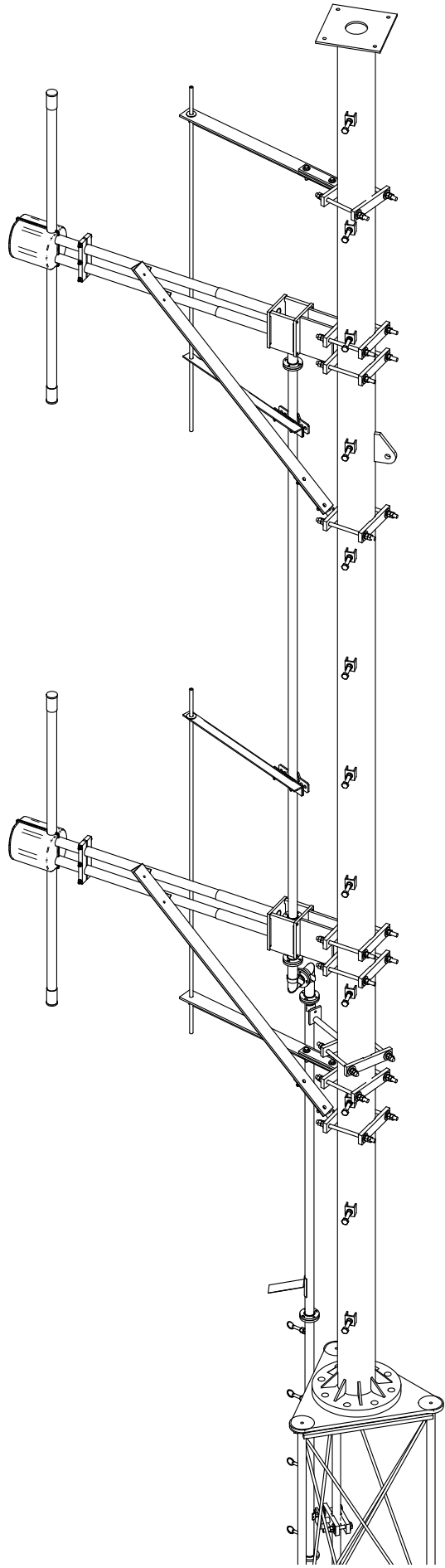
DIELECTRIC COMMUNICATIONS
C/O FM ENGINEERING MANAGER
22 TOWER RD. RAYMOND, ME. 04071

STATUS: RELEASED		DIMENSIONAL TOLERANCES (UNLESS OTHERWISE NOTED) DECIMAL DIMENSIONS 3 PLACE DIMENSIONS ±.005 2 PLACE DIMENSIONS ±.02 FRACTIONAL DIMENSIONS 0"-6" ±1/32" ABOVE 6" UP TO 12" ±1/16" ABOVE 12" UP TO 48" ±1/8" ABOVE 48" ±1/4" ANGULAR DIMENSIONS ±1/2° REFERENCE DIMENSIONS ARE NOT FOR MANUFACTURING OR INSPECTION.		 A Unit of SPX Corporation Raymond, ME																
PART NO./MATERIAL NO:																				
SAP DOCUMENT NO: 10000000240				TITLE: INSTALLATION																
MATERIAL: SEE BOM				WCNV 89.1 FM																
		ANGLE PROJECTION 		DCV 2 BAY																
		<table><tr><td>NAME</td><td>DATE</td></tr><tr><td>DESIGNED BY hm.guerin</td><td>8/18/2006</td></tr><tr><td>DETAIL BY hm.guerin</td><td>10/12/2006</td></tr><tr><td>CHKD. BY CraigB</td><td>10/10/2006</td></tr><tr><td>ENG. 1 APPR. MattT</td><td>10/11/2006</td></tr><tr><td>ENG. 2 APPR. N/A</td><td>10/11/2006</td></tr><tr><td>MANUFACT. KeithP</td><td>10/11/2006</td></tr></table>		NAME	DATE	DESIGNED BY hm.guerin	8/18/2006	DETAIL BY hm.guerin	10/12/2006	CHKD. BY CraigB	10/10/2006	ENG. 1 APPR. MattT	10/11/2006	ENG. 2 APPR. N/A	10/11/2006	MANUFACT. KeithP	10/11/2006	GAGE CODE D 08441		DRAWING NO: 007A33401
NAME	DATE																			
DESIGNED BY hm.guerin	8/18/2006																			
DETAIL BY hm.guerin	10/12/2006																			
CHKD. BY CraigB	10/10/2006																			
ENG. 1 APPR. MattT	10/11/2006																			
ENG. 2 APPR. N/A	10/11/2006																			
MANUFACT. KeithP	10/11/2006																			
REFER TO D8110 FOR PLATING REFER TO D17800 FOR PAINT				10:46:47 AM																
				SHEET: 1 OF 1																

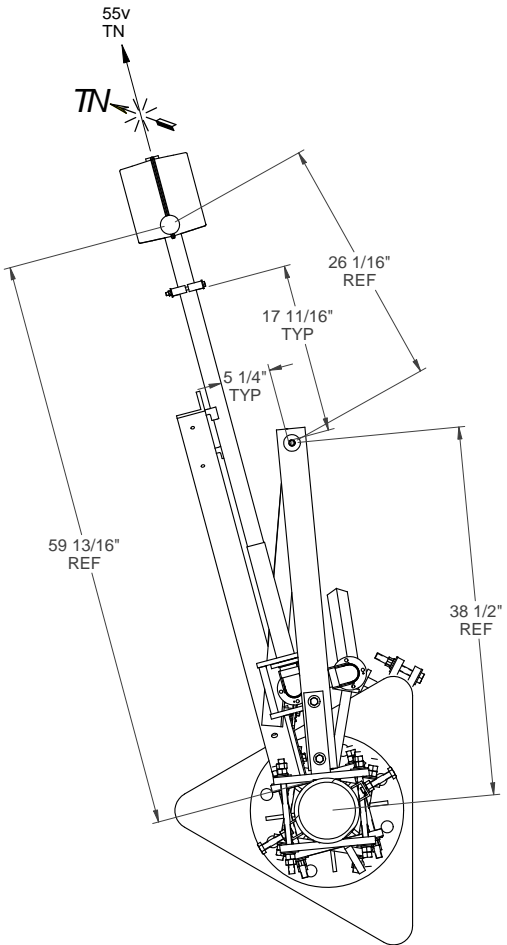
SAP ORDER: 3000269
ANTENNA P/N: 104038
MOUNT P/N: 104039

COMPANY CONFIDENTIAL. INFORMATION CONTAINED HEREIN IS CONFIDENTIAL. IT IS THE PROPERTY OF SPX CORPORATION. IT IS TO BE USED SOLELY FOR THE PURPOSE PROVIDED, AND IT IS NOT TO BE DISCLOSED TO OTHERS WITHOUT THE PRIOR WRITTEN CONSENT OF SPX CORPORATION.

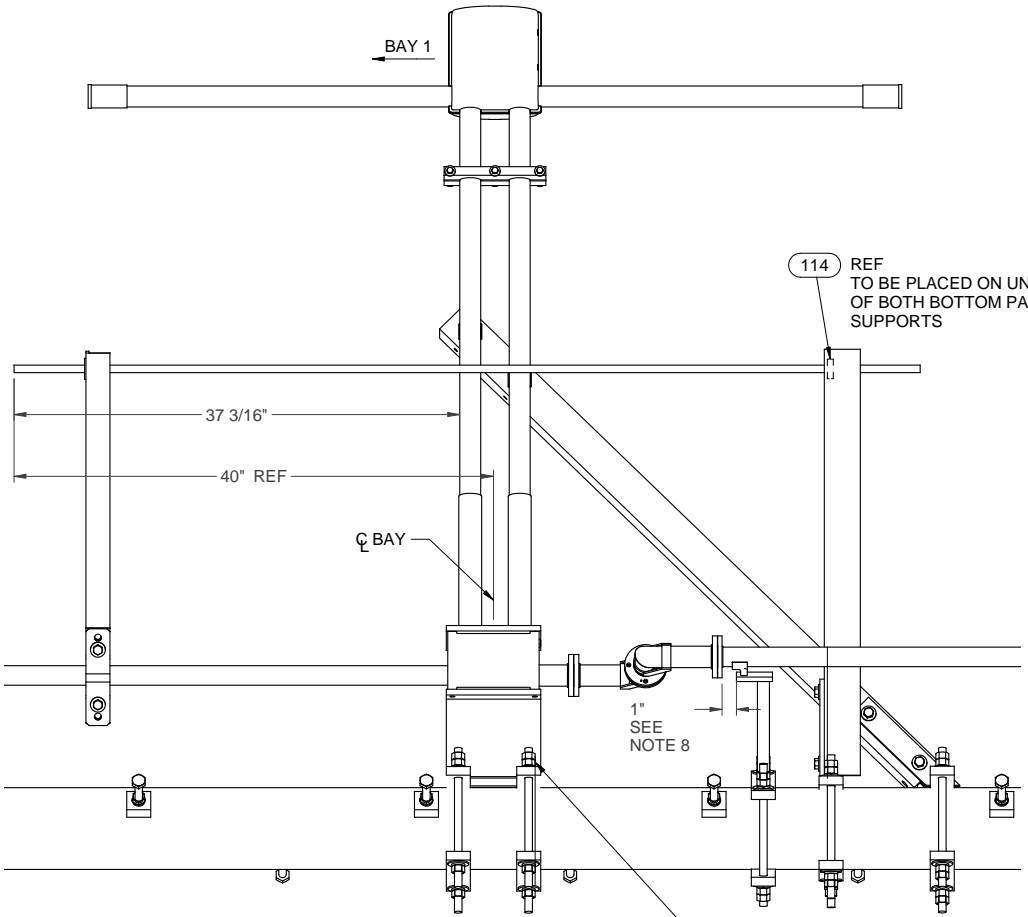
UNLESS OTHERWISE SPECIFIED
MANUFACTURING TOLERANCE AND PROCEDURES MUST BE IN ACCORDANCE WITH D178891. ALL ALUMINUM, COPPER, AND BRASS WELDING MUST COMPLY WITH A-62700, SECT. XIV "PRODUCTION WELDING PROCEDURES". STRUCTURAL STEEL WELDING MUST COMPLY WITH "AWS 1.1 CURRENT REVISION".



ISOMETRIC VIEW



SECTION A - A
ENLARGED FOR CLARITY



PARTIAL ELEVATION VIEW

NOTE TO INSTALLER;
DOUBLE NUT ONE SIDE
OF ALL THREADED ROD