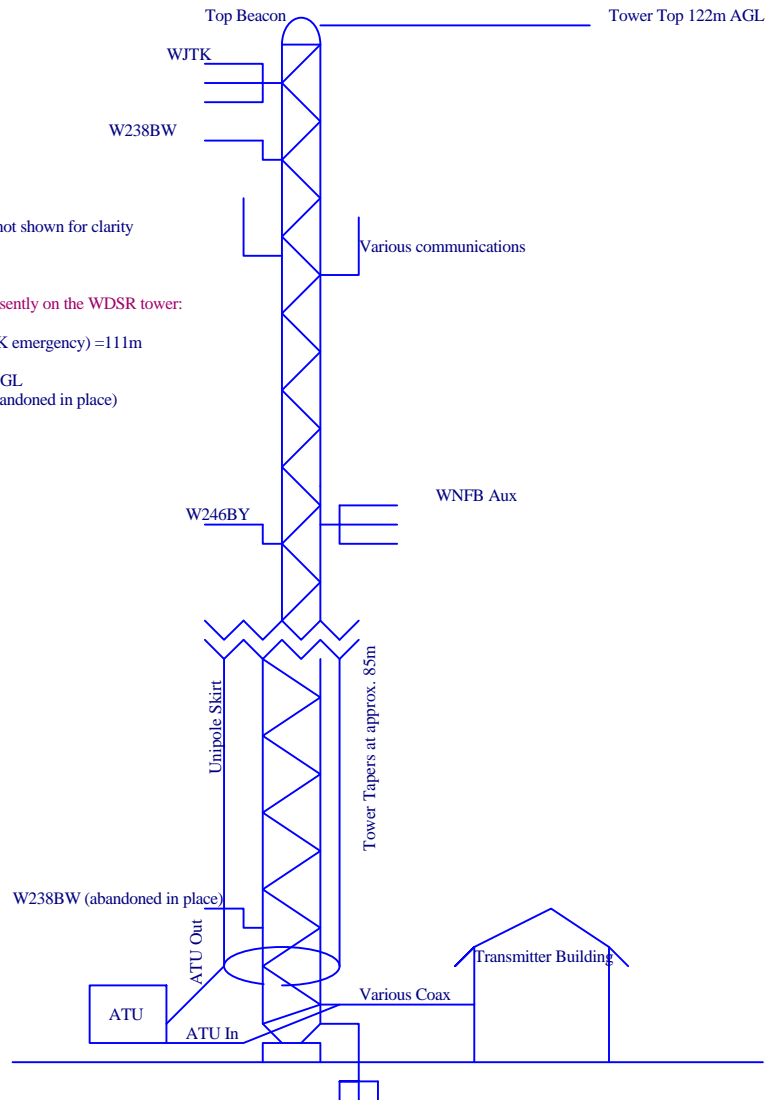


## Engineering Exhibit EE-1, Appendix A

### WDSR Tower Sketch



FM broadcast antennas presently on the WDSR tower:  
WJTK Main = 116m AGL  
W238BW (Formerly WJTK emergency) = 111m  
W246BY = 94m AGL  
WNFB Auxiliary = 92m AGL  
W238BW = 10m AGL (abandoned in place)

Tower Reg # 1031340

Drawing not to scale

#### CircuitWerkes, Inc.

2805 NW 6th Street  
Gainesville, FL 32609, USA  
352-335-6555  
www.circuitwerkes.com

Title: WDSR Tower Sketch	REV #:	Date: Jan 25, 2012	Drawn By: KEM
-----------------------------	--------	-----------------------	------------------