

**City of License Coverage**

The community of license for KKRO is Redding, California. The city of Redding contains an area of 156.14 sq. km\* and has a population of 80,881\* persons (see Exhibit 20-A). The proposed facility's 60 dBu F(50,50) contour covers 78.65 sq. km and 43,998 persons (see Exhibit 20-B) within the city limits of Redding. The chart below shows the percentages of both area and population covered within the city limits of Redding by the proposed KKRO facility and the coverage of the current license.

	City of Redding	KKRO License	KKRO proposed	Percentage of Coverage
Area	156.14	0	78.65	50.37%
Population	80,881	0	43,998	54.40%

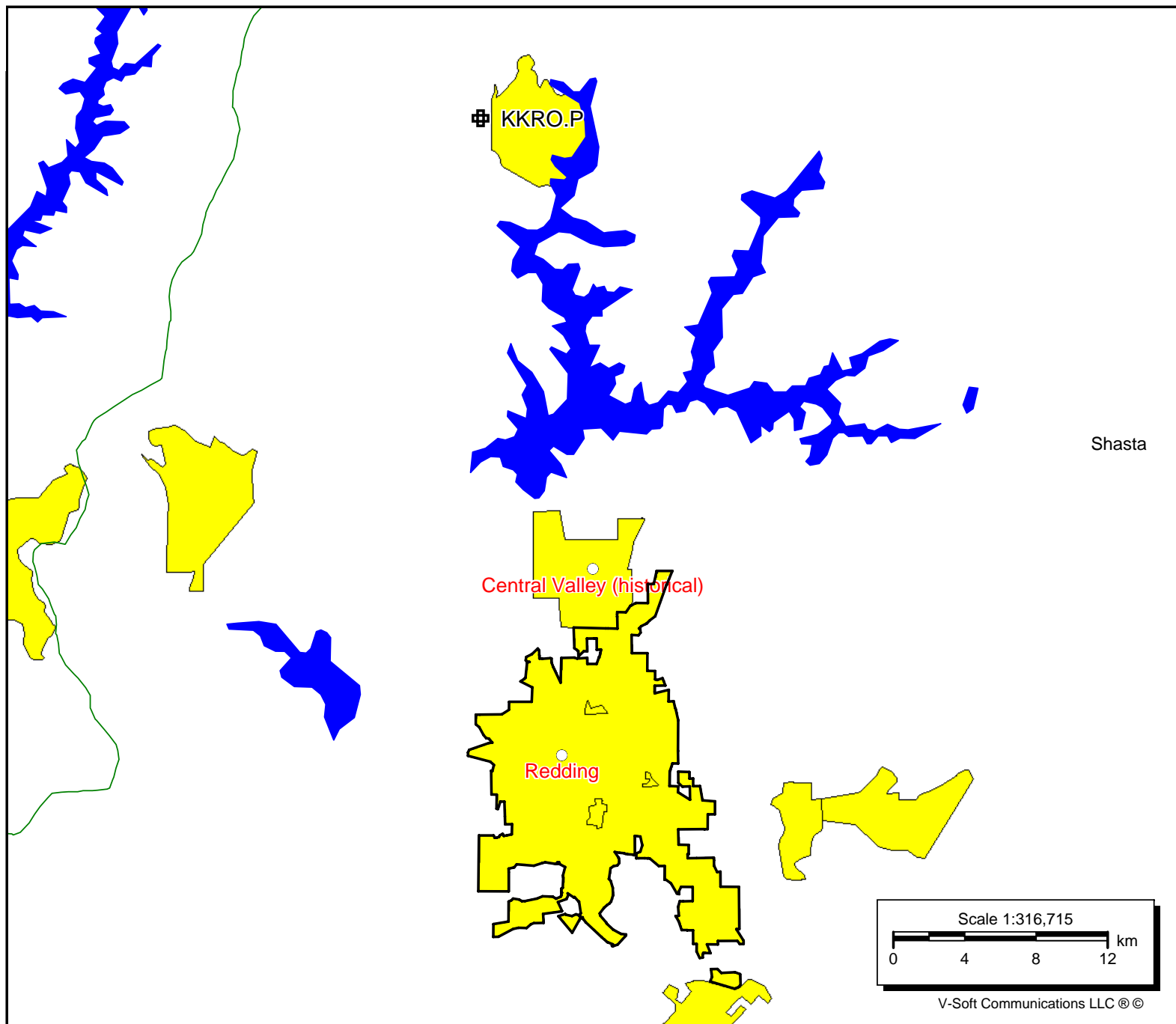
Thus, the facility proposed in this application meets the requirement to serve the community of license.

\*Note - The city limits and population were calculated using the 2000 Census data as rendered by V-Soft Communications program Probe 3.

**Exhibit 20-A**

**KKRO.P**

Latitude: 40-54-28 N  
Longitude: 122-26-41 W  
ERP: 0.39 kW  
Channel: 218  
Frequency: 91.5 MHz  
AMSL Height: 1172.0 m  
Pattern: Directional



**City of License Area**

Polygon Population Report - Redding - area 1

Population Database: 2000 US Census (SF1)

Total Population: 80,879

Housing Units: 33,839

Polygon Area: 154.87 sq. km

Polygon Population Report - Redding - area 2

Population Database: 2000 US Census (SF1)

Total Population: 2

Housing Units: 1

Polygon Area: 1.27 sq. km

Total area of Redding: 156.14 sq. km

Total population of Redding: 80,881 persons

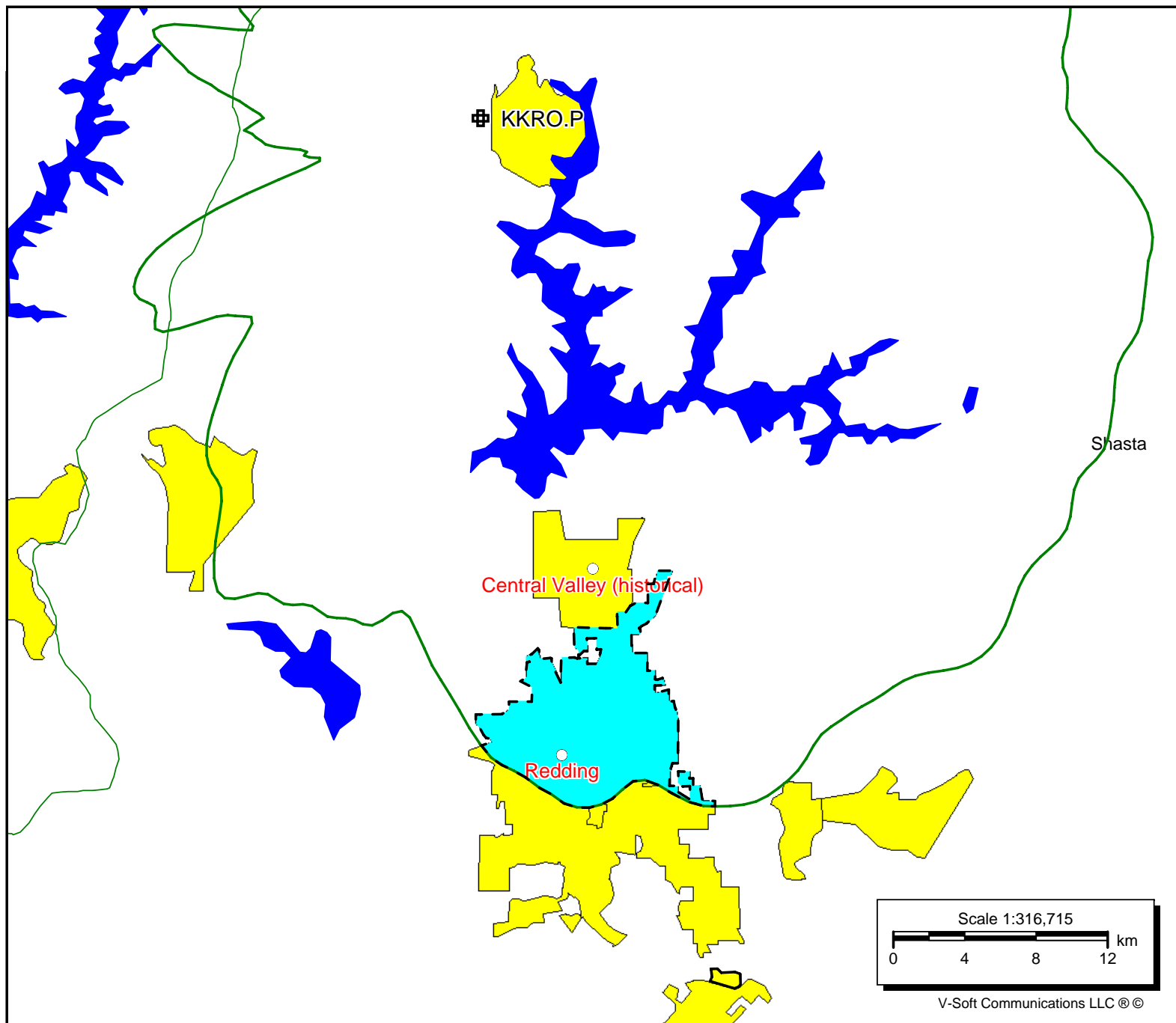


## Exhibit 20-B

### KKRO.P

Latitude: 40-54-28 N  
Longitude: 122-26-41 W  
ERP: 0.39 kW  
Channel: 218  
Frequency: 91.5 MHz  
AMSL Height: 1172.0 m  
Pattern: Directional

 KKRO Coverage



V-Soft Communications LLC ©

# Educational Media Foundation

5700 West Oaks Boulevard ♦ Rocklin ♦ California ♦ 95765

Exhibit 20-B

Redding, CA

## City of License Area Covered

Polygon Population Report

Population Database: 2000 US Census (SF1)

Total Population: 43,998

Housing Units: 19,504

Polygon Area: 78.65 sq. km