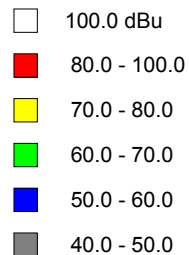


Antenna = CL-FM(H) & (V)

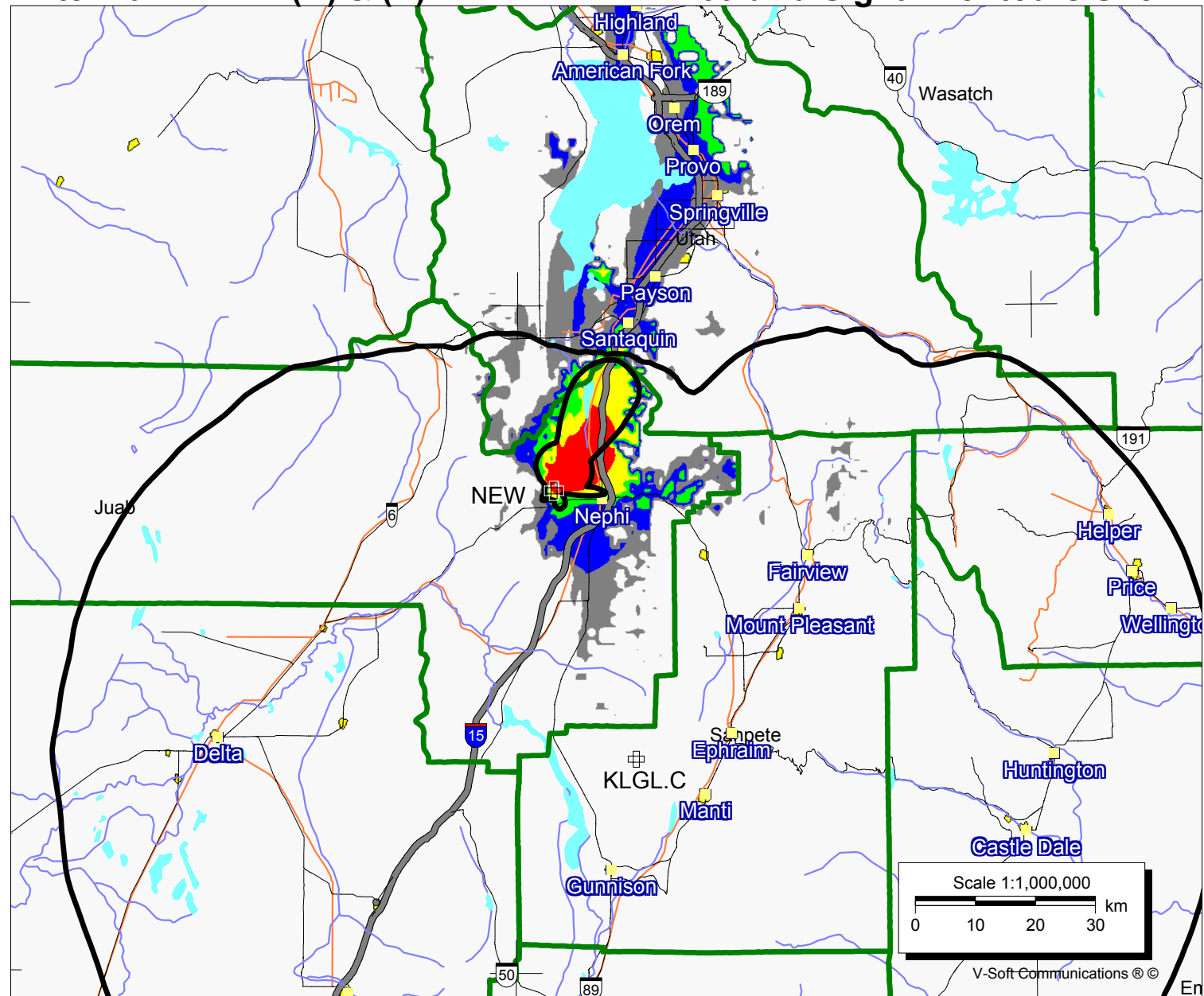
60 dBu Signal Contours Shown

NEW

Latitude: 39-43-24 N
Longitude: 111-55-44 W
ERP: 0.50 kW
Channel: 248
Frequency: 97.5 MHz
AMSL Height: 1766.1 m
Elevation: 1757.0 m
HAAT: 37.13 m
Horiz. Pattern: Directional
Vert. Pattern: No
Prop Model: Longley/Rice
Climate: Cont temperate
Conductivity: 0.0150
Dielec Const: 15.0
Refractivity: 310.0
Receiver Ht AG: 9.1 m
Receiver Gain: 0 dB
Time Variability: 50.0%
Sit. Variability: 50.0%
ITM Mode: Broadcast



Doug Vernier
1600 Picturesque Drive
Cedar Falls, Iowa 50613
Telecommunication Consultants
dvernier@vcc.com 319.246.8402



Scale 1:1,000,000
0 10 20 30 km

V-Soft Communications ©

Doug Vernier Telecommunications Consultants
Nephi Booster Application
ERP = .5 kW
Channel = 248

Azimuth Deg. T.	Ave. Elev. 3 to 16 km Meters AMSL	Effective Antenna Height Meters AAT	ERP (dBk)	F(50-50) Distance to 60 dBu Contour km
0	1684.9	81.1	-4.255	12.83
10	1629.3	136.7	-3.474	17.73
20	1581.7	184.3	-3.098	21.05
30	1525.0	241.0	-3.098	23.84
40	1545.4	220.6	-3.474	22.40
50	1644.2	121.8	-4.255	15.81
60	1776.0	-10.0	-5.469	7.32
70	2065.0	-299.0	-7.205	6.62
80	1999.4	-233.4	-9.624	5.76
90	2080.1	-314.1	-13.762	4.49
100	1846.4	-80.4	-21.427	2.91
110	1678.5	87.5	-30.969	2.80
120	1605.9	160.1	-33.468	3.04
130	1619.0	147.0	-33.468	2.93
140	1597.2	168.8	-33.468	3.11
150	1560.8	205.2	-33.468	3.35
160	1554.1	211.9	-33.468	3.39
170	1582.4	183.6	-33.468	3.21
180	1707.9	58.1	-33.468	2.10
190	1809.2	-43.2	-33.468	1.61
200	1773.9	-7.9	-33.468	1.61
210	1722.3	43.7	-33.468	1.82
220	1723.1	42.9	-33.468	1.80
230	1759.1	6.9	-33.468	1.61
240	1784.9	-18.9	-33.468	1.61
250	1831.1	-65.1	-33.468	1.61
260	1890.3	-124.3	-33.468	1.61
270	1973.0	-207.0	-33.468	1.61
280	1962.1	-196.1	-33.468	1.61
290	2001.2	-235.2	-33.468	1.61
300	1983.3	-217.3	-30.969	1.71
310	1863.9	-97.9	-21.427	2.91
320	1798.1	-32.1	-13.762	4.49
330	1733.5	32.5	-9.624	5.96
340	1720.1	45.9	-7.205	8.20
350	1721.4	44.6	-5.469	8.98

Ave. = 1759.3 M 6.7 M

Antenna Radiation Center AMSL = 1766 M
NGDC 30 Arc Sec.

Geographic Coordinates:

N. Lat. 39 46 24
W. Lng. 111 55 44

Doug Vernier Telecommunications Consultants
 KLGL , Sanpete County Broadcasting C, BLH20010103ABA Primary Station
 ERP = 66 kW
 Channel = 248

Azimuth Deg. T.	Ave. Elev. 3 to 16 km Meters AMSL	Effective Antenna Height Meters AAT	ERP (dBk)	F(50-50) Distance to 60 dBu Contour km
0	2341.2	262.8	18.195	65.22
10	2406.2	197.8	18.195	59.70
20	2271.9	332.1	18.195	70.55
30	2167.0	437.0	18.195	78.19
40	2088.6	515.4	18.195	83.49
50	1885.9	718.1	18.195	91.93
60	1830.2	773.8	18.195	93.92
70	1764.2	839.8	18.195	96.16
80	1743.8	860.3	18.195	96.81
90	1734.6	869.4	18.195	97.10
100	1759.3	844.7	18.195	96.32
110	1783.7	820.3	18.195	95.52
120	1800.7	803.3	18.195	94.94
130	1815.6	788.4	18.195	94.43
140	1869.4	734.6	18.195	92.52
150	1865.0	739.0	18.195	92.68
160	1838.6	765.4	18.195	93.62
170	1806.5	797.5	18.195	94.74
180	1847.7	756.3	18.195	93.30
190	1816.1	787.9	18.195	94.41
200	1813.6	790.4	18.195	94.50
210	1803.5	800.5	18.195	94.85
220	1762.6	841.4	18.195	96.21
230	1739.9	864.1	18.195	96.93
240	1760.4	843.6	18.195	96.29
250	1778.1	825.9	18.195	95.70
260	1776.9	827.1	18.195	95.74
270	1758.7	845.3	18.195	96.34
280	1758.0	846.0	18.195	96.36
290	1801.0	803.0	18.195	94.93
300	1855.2	748.8	18.195	93.03
310	1961.4	642.6	18.195	89.19
320	2042.4	561.6	18.195	85.99
330	2166.7	437.3	18.195	78.22
340	2221.2	382.8	18.195	74.20
350	2280.9	323.1	18.195	69.90

Ave. = 1908.8 M 695.2 M

Antenna Radiation Center AMSL = 2604 M
 NGDC 30 Arc Sec.

Geographic Coordinates:

N. Lat. 39 19 23
 W. Lng. 111 46 23