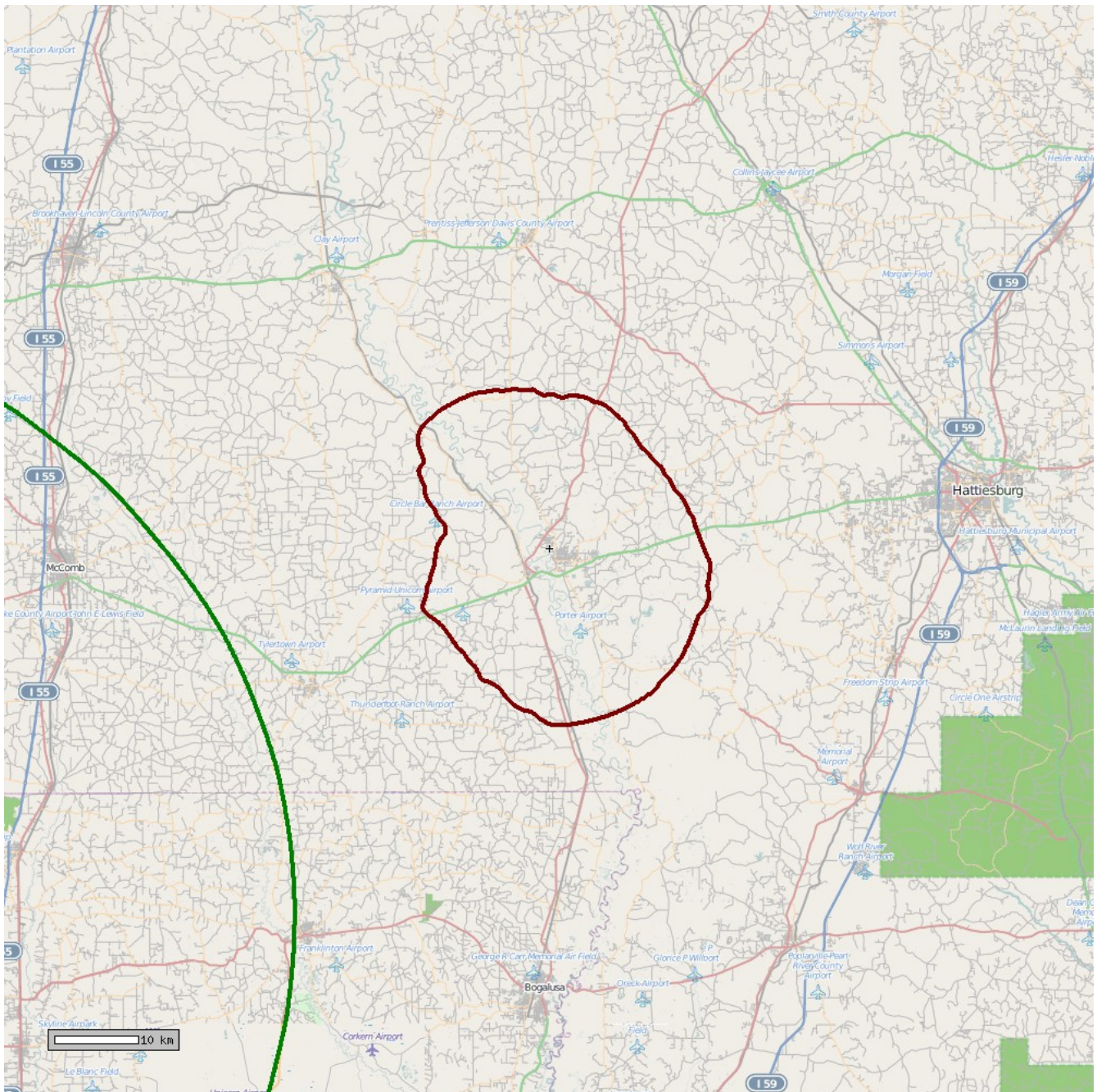


### **EXHIBIT 13 - 74.1204 OVERLAP SHOWING**



**Figure 1:** The map above depicts the F(50,50) 60 dBu contour of station WEMX 94.1 FM at Kentwood, Louisiana (Facility ID 58931, green contour) and the F(50,10) 54 dBu interfering contour of the proposed WFFF fill-in translator (dark red contour). As demonstrated above, there is no prohibited overlap between the two facilities.

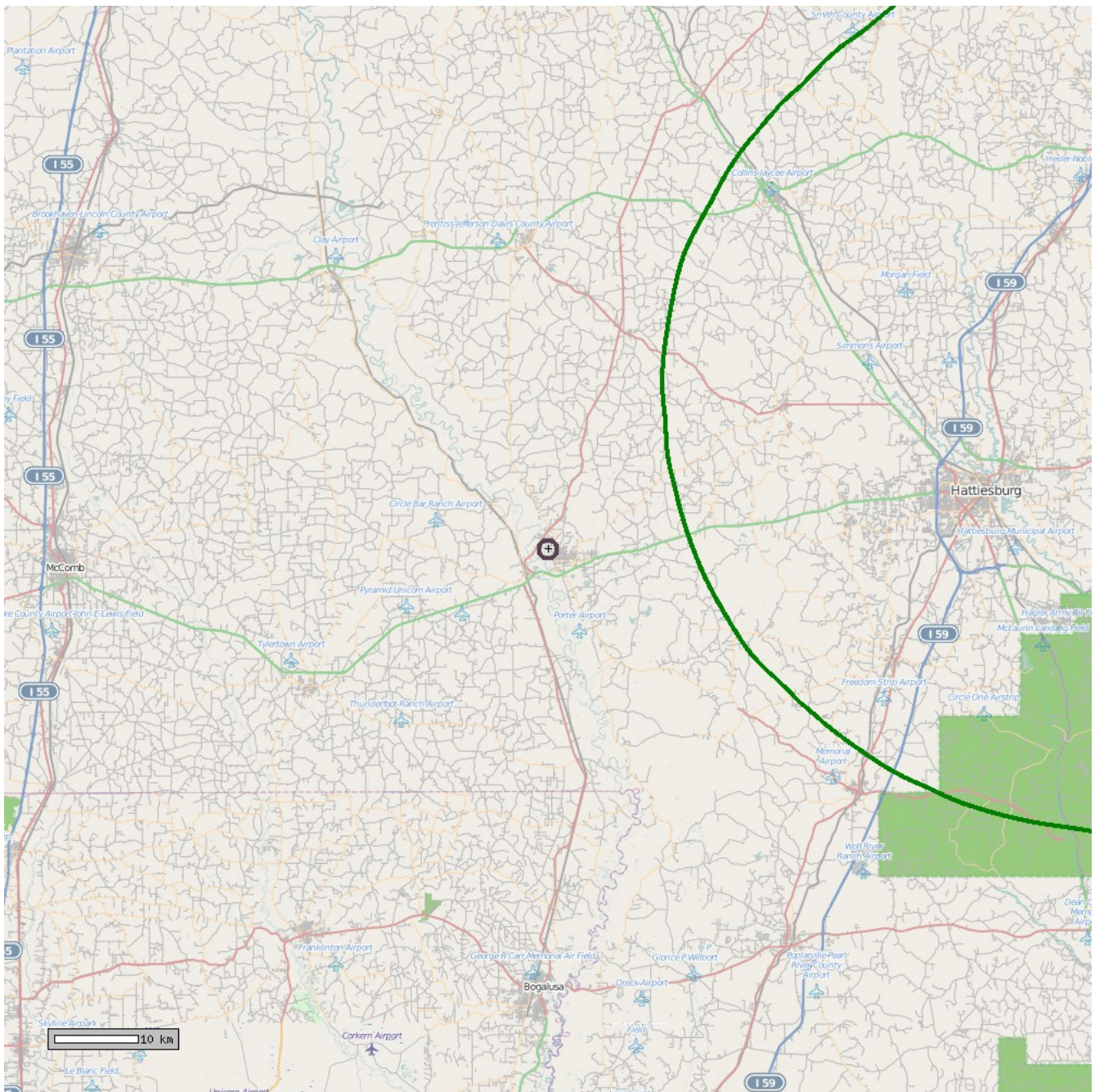


Figure 2: The map above depicts the F(50,50) 60 dBu contour of station WKZW 94.3 FM at Sandersville, Mississippi (Facility ID 14021, green contour) and the F(50,10) 100 dBu interfering contour of the proposed WFFF fill-in translator (dark red contour). As demonstrated above, there is no prohibited overlap between the two facilities.

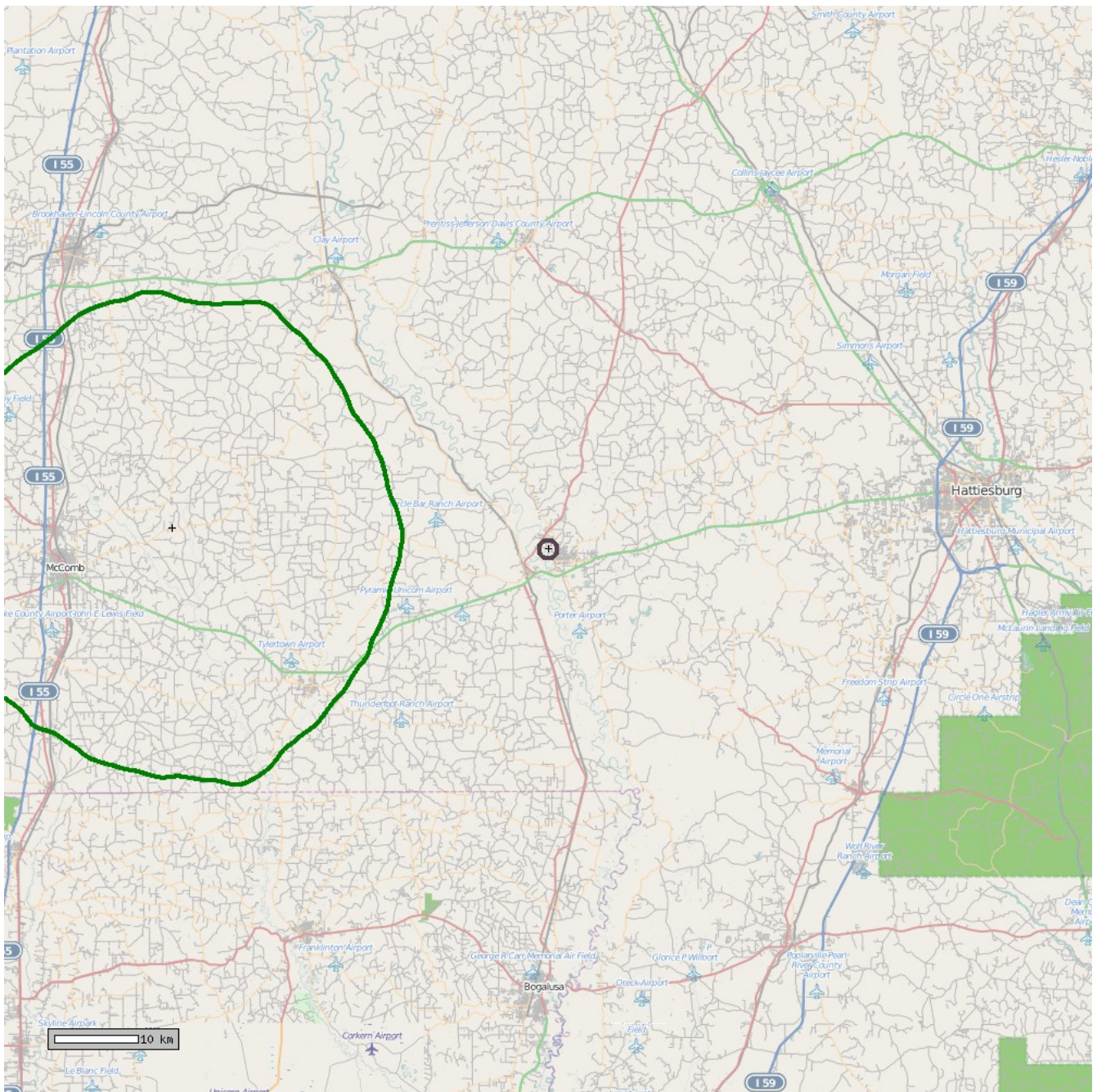


Figure 3: The map above depicts the F(50,50) 60 dBu contour of station WMPK 93.5 FM at Summit, Mississippi (Facility ID 198617, green contour) and the F(50,10) 100 dBu interfering contour of the proposed WFFF fill-in translator (dark red contour). As demonstrated above, there is no prohibited overlap between the two facilities.