

Comprehensive Technical Exhibit Application for Minor Modification

**BNPFT-20030829ANS
K239AY, FCC ID 146568
Montpelier, ID
Bear Lake County TV District**

Engineering statement - request for expedited processing. The within application for minor modification of BNPFT-20030829ANS is filed because of unavailability of the originally cited tower, ASR 1226376, precluding construction at the parameters specified. The applicant has found a location just 80 meters northwest of the tower on an much shorter unregistered mast. The applicant had constructed the facility and filed for license to cover, but the application did not accurately reflect the terms of the CP and was thus contacted by the Audio Division; this application is intended to correct that situation and, when granted, to allow the applicant operate pursuant to a license to cover.

The proposed FM translator station will operate as proposed in BNPFT-20030829ANS with the following exceptions:

- Antenna site is revised from 42-19-13 N, 111-17-14 W to 42-19-15 N, 111-17-12 W.
- Site elevation is revised from 1925 meters to 1880 meters.
- Antenna height above ground revised from 30 meters to 5 meters.
- Antenna HAMSL revised to 1885 m; HAAT is revised to -93.35 m.

Allocation and interference considerations. Channel 239 (D) allocation considerations are shown on the attached listing and map. Proposed coverage contour is revised to that shown on the attached map.

Translator of NCE-FM station. The within application specifies that this is a translator of KUSU-FM, FCC ID 69597, Logan, UT. The applicant has received written permission to rebroadcast that facility.

Signal Blanketing. The blanketing distance from a 0.115 kW facility is 130 m from the site. The hilltop is unpopulated, but there are several other electronic facilities within blanketing distance. Studies indicate no interference arising from blanketing, but applicant certifies as to its intent to resolve any interference that may result from its proposed operation.

*BNPFT-20030829ANS, K239AY, FCC ID 146568, Montpelier, ID
Bear Lake County TV District*

Environmental considerations. The proposed facility will be attached to an existing structure, and poses no additional environmental impact. Surface features, animal habitat and Native American historical locations are not affected.

With respect to OET Bulletin 65 concerns, the transmitting antenna is a 1/2-wave spaced reduced downward radiation antenna; however, RF radiation from the transmitter site has been subjected to the "worst case" analysis in the checklist and is confirmed to be less than 13% of the controlled human exposure limit and less than 65% of the uncontrolled exposure limit at this frequency. The area containing the site is remote and fenced; public access is not allowed. Thus, the potential for casual human exposure is almost nil. The applicant agrees to undertake all mitigating efforts including powering the equipment off for nearby service work as necessary.

Operation on unregistered antenna structure. The within application has been subjected to the FCC's tower analysis, which reveals that there are no airports within 8 km of the site.

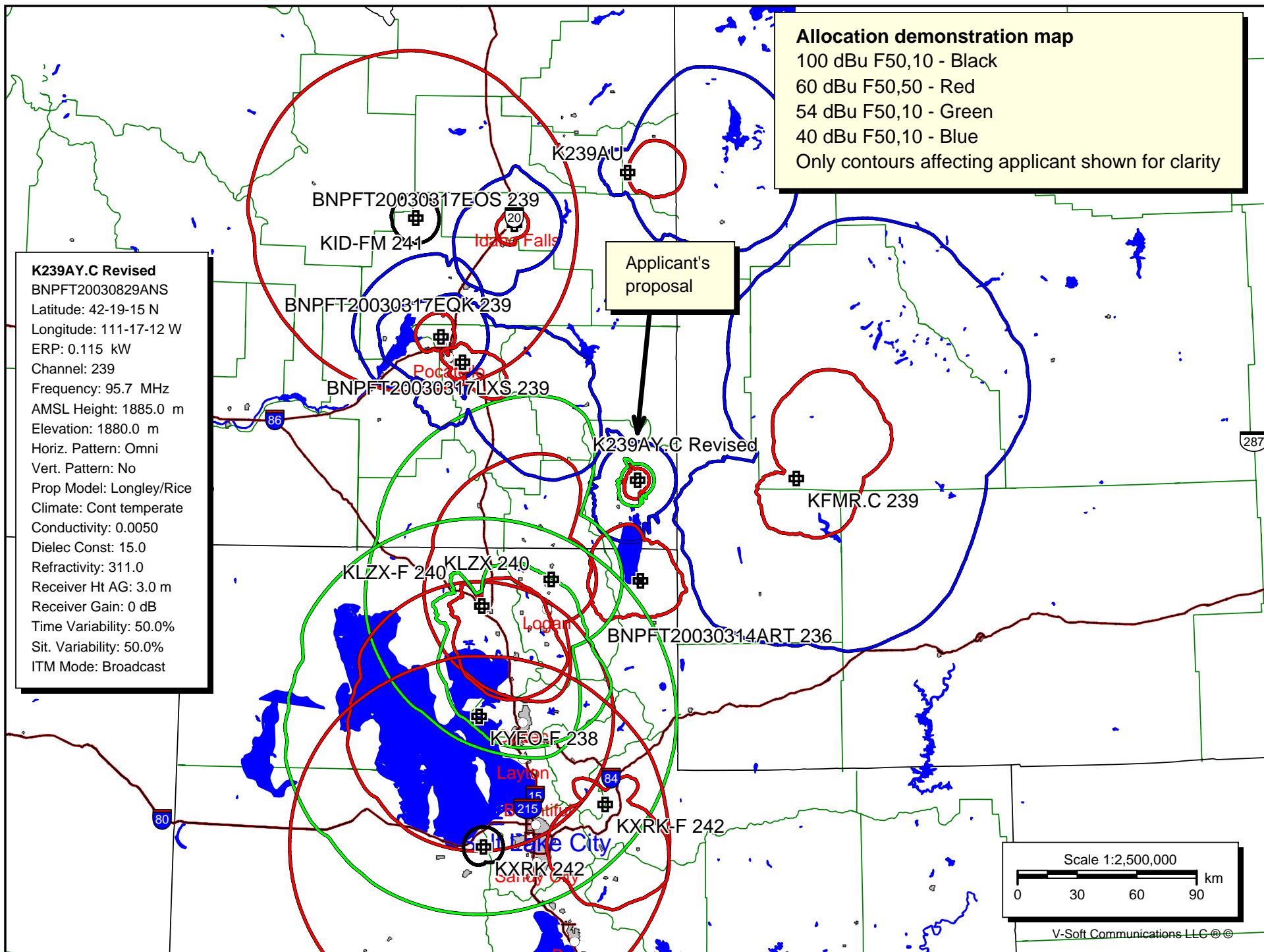
Canadian Coordination distance: The proposal is well outside the Canadian Coordination distance of 320 km.

BNPFT-20030829ANS, K239AY, FCC ID 146568, Montpelier, ID - Bear Lake County TV District**Facilities studied for allocation/interference - see map for contours:****§74.1204**

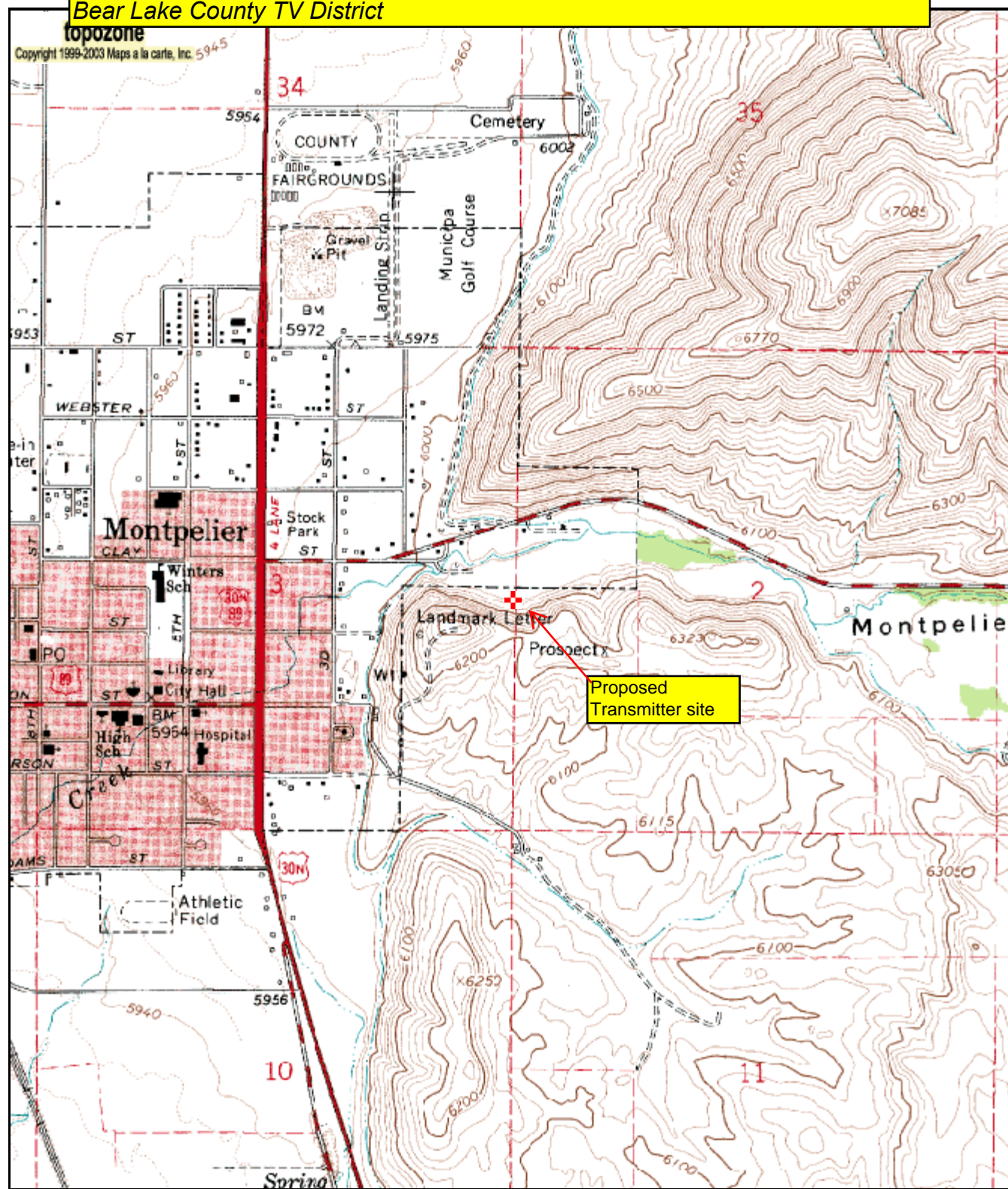
Call	Class	Frequency	Status	City	State	Country	File Number
Docket	Channel	Service	ERP	HAAT	Dist(km)	Dist(mi)	Licensee/Permittee
NEW 146317	236 D	FX 95.1 MHz 0.25 kW	APP 0. m	GARDEN CITY 50.56 km	31.42 mi	178.36°	BNPFT-20030314ART SUN VALLEY RADIO, INC.
KYFO-FM 5176 INC.	238 C1	FM 95.5 MHz 100. kW	LIC 219. m	OGDEN 142.78 km	88.72 mi	213.79°	UT US BLED-19981125KD BIBLE BROADCASTING NETWORK,
NEW 152313	239 D	FX 95.7 MHz 0.25 kW	APP 0. m	IDAHO FALLS 142.64 km	88.63 mi	334.39°	ID US BNPFT-20030317EOS RADIO ASSIST MINISTRY, INC.
NEW 152336	239 D	FX 95.7 MHz 0.25 kW	APP 0. m	POCATELLO 122.18 km	75.92 mi	306.20°	ID US BNPFT-20030317EQK RADIO ASSIST MINISTRY, INC.
NEW 157876	239 D	FX 95.7 MHz 0.15 kW	APP 0. m	POCATELLO 105.98 km	65.85 mi	304.07°	ID US BNPFT-20030317LXS CITICASTERS LICENSES, L.P.
K239AU 139608	239 D	FX 95.7 MHz 0.1 kW	LIC 0. m	DRIGGS 154.59 km	96.06 mi	358.14°	ID US BLFT-20070822ADX CHAPARRAL BROADCASTING COMPANY
KFMR 164261	239 C1	FM 95.7 MHz 7. kW	CP 425. m	MARBLETON 79.69 km	49.51 mi	89.39°	WY US BNPH-20041229AFT SKYWEST MEDIA L.L.C.
KLZX 88184	240 C3	FM 95.9 MHz 25. kW	LIC 66. m	WESTON 65.98 km	41.00 mi	220.94°	ID US BMLH-20070117AAI SUN VALLEY RADIO INC
KLZX-FM1 163417	240 D	FB 95.9 MHz 5. kW	LIC 0. m	TREMONTON 100.53 km	62.47 mi	230.97°	UT US BLFTB-20050901ACY SUN VALLEY RADIO, INC.
KID-FM 22195	241 C	FM 96.1 MHz 100. kW	LIC 458. m	IDAHO FALLS 172.44 km	107.15 mi	319.86°	ID US BMLH-20060831AAG GAP BROADCASTING POCATELLO LICENSE, LLC
KXRK 406	242 C	FM 96.3 MHz 25. kW	LIC 1140. m	PROVO 199.70 km	124.09 mi	202.72°	UT US BLH-20021113AAN SIMMONS-SLC, LS, LLC
KXRK-FM1 161761	242 D	FB 96.3 MHz 1.3 kW	LIC 0. m	PARK CITY 163.59 km	101.65 mi	185.69°	UT US BLFTB-20050413ABZ SIMMONS-SLC, LS, LLC
KXRK-FM1 161761	242 D	FB 96.3 MHz 0.2 kW	CP 0. m	PARK CITY 182.99 km	113.71 mi	186.24°	UT US BPFTB-20070719AAT SIMMONS-SLC, LS, LLC

Facilities 53 or 54 channels above proposal: §73.207

0 FM Records within 29.00 km distance of 42° 19' 15.00" N, 111° 17' 12.00" W



BNPFT-20030829ANS, K239AY, FCC ID 146568, Montpelier, ID
Bear Lake County TV District



42° 19' 15"N, 111° 17' 15"W (NAD83/WGS84)
Montpelier Canyon, USGS Montpelier (ID) Quadrangle
 Projection is UTM Zone 12 NAD83 Datum

M=12.693
G=-0.194