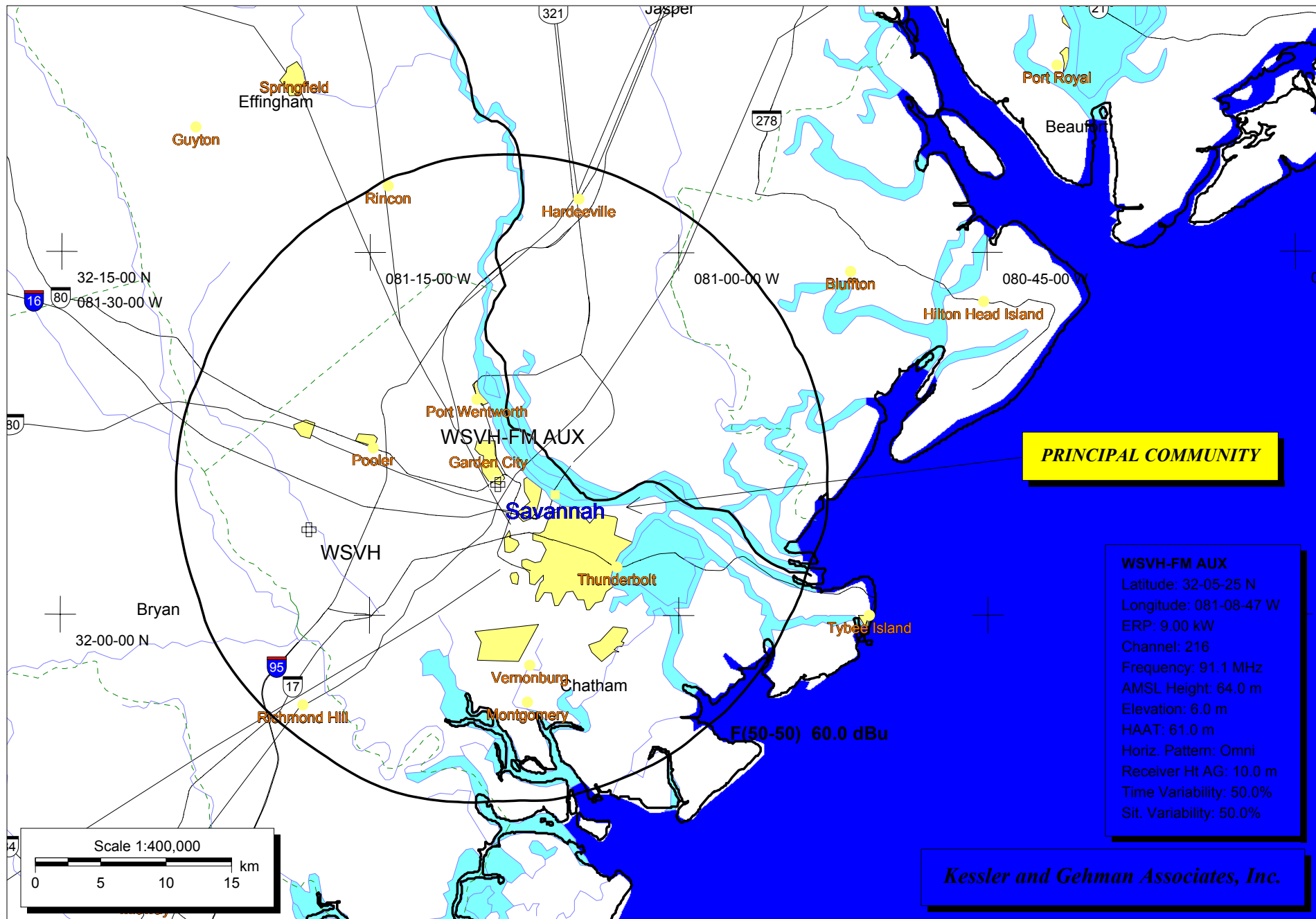
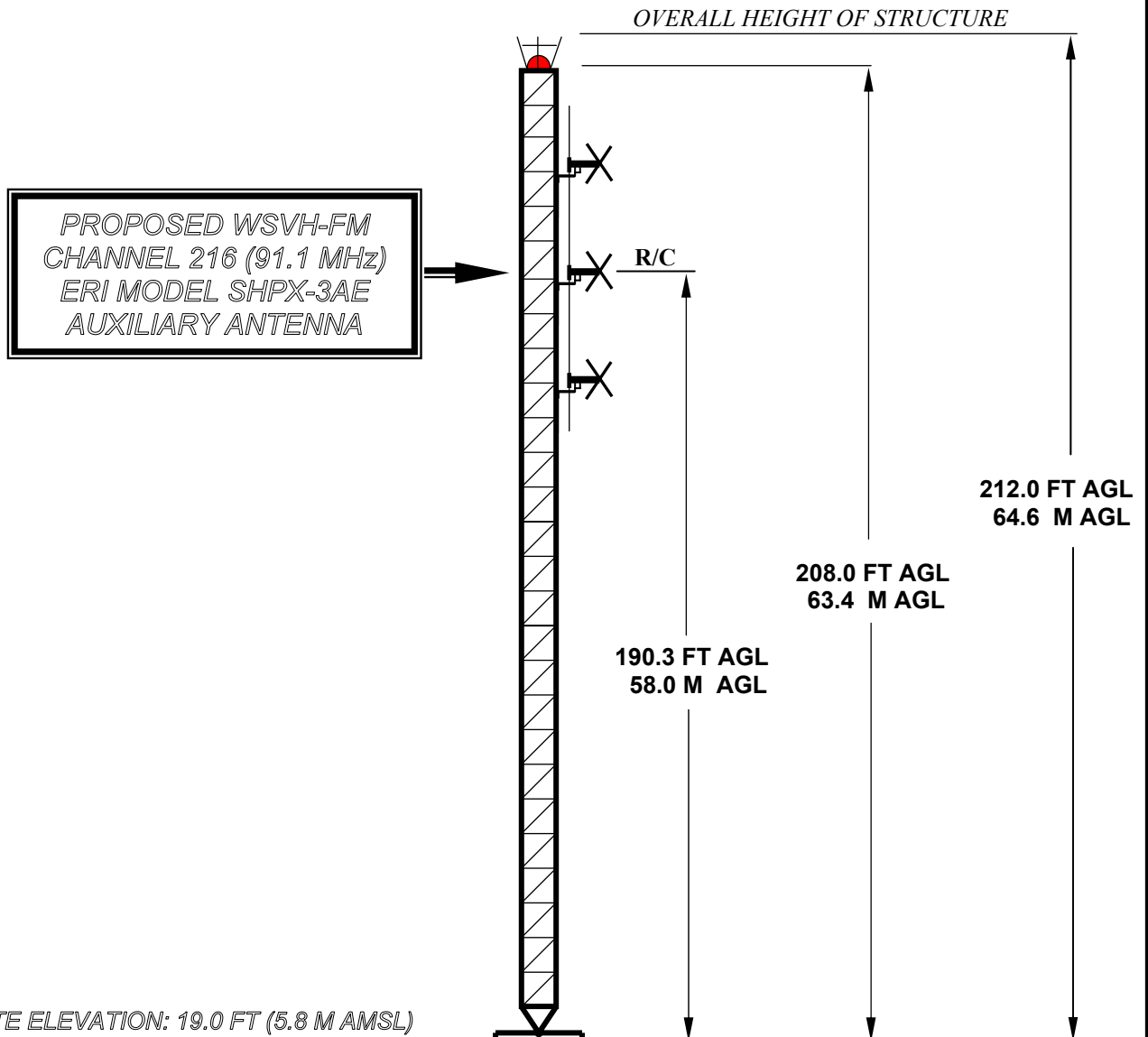


**Exhibit 1**



**WSVH-FM CHANNEL 216 AUXILIARY F(50,50) 60 dBuV/m SERVICE CONTOUR AT CLEAR CHANNEL SITE**

## ANTENNA STRUCTURE ELEVATION VIEW



OVERALL HEIGHT AGL: 64.6 M  
OVERALL HEIGHT AMSL: 70.4 M  
RADIATION CENTER AGL: 58.0 M  
RADIATION CENTER AMSL: 63.8 M  
RADIATION CENTER HAAT: 60.3 M  
AVG OF ALL NON-ODD RADIALS: 3.5 M  
SITE HAAT: 2.3 M

COORDINATES (NAD 27):  
N. LATITUDE 32° 05' 25"  
W. LONGITUDE 81° 08' 47"  
Antenna Structure Registration Number:  
1051911

NOTE: NOT TO SCALE

**KESSLER & GEHMAN**  
TELECOMMUNICATIONS CONSULTING ENGINEERS  
507 N.W. 60th Street, Suite C  
Gainesville, Florida 32607

WSVH-FM AUXILIARY CHANNEL 216  
SAVANNAH, GEORGIA  
20031002  
EXHIBIT 3

## ENGINEERING SPECIFICATIONS

**WSVH-FM AUXILIARY**  
*SAVANNAH, GEORGIA*

**DATA FOR PROPOSED AUXILIARY FM  
NONDIRECTIONAL TRANSMITTING ANTENNA**

- A. **Antenna:** ERI Model SHPX-3AE, Circularly Polarized,  
Nondirectional FM, Side-Mount, Auxiliary Antenna.
- B. **Electrical Beam Tilt:** None
- C. **Mechanical Beam Tilt:** None
- D. 

<b><u>Maximum Power Gain</u></b>	<b><u>Circular Polarization</u></b>
Maximum:	1.55 (1.9 dB)
Horizontal:	1.55 (1.9 dB)
- E. **Length:** 30.2 feet (9.2 meters)
- F. **Transmitter Power Output (TPO):** 6.1 kW
- G. **Transmission Line:** 3-1/8" 50-ohm
- H. **Transmission Line Efficiency:** 94.6%
- I. **Transmission Line Length:** 250 feet
- J. **Transmission Line Loss:** 0.0945 dB/100 ft
- K. **Transmission Line Attenuation:** 0.24 dB