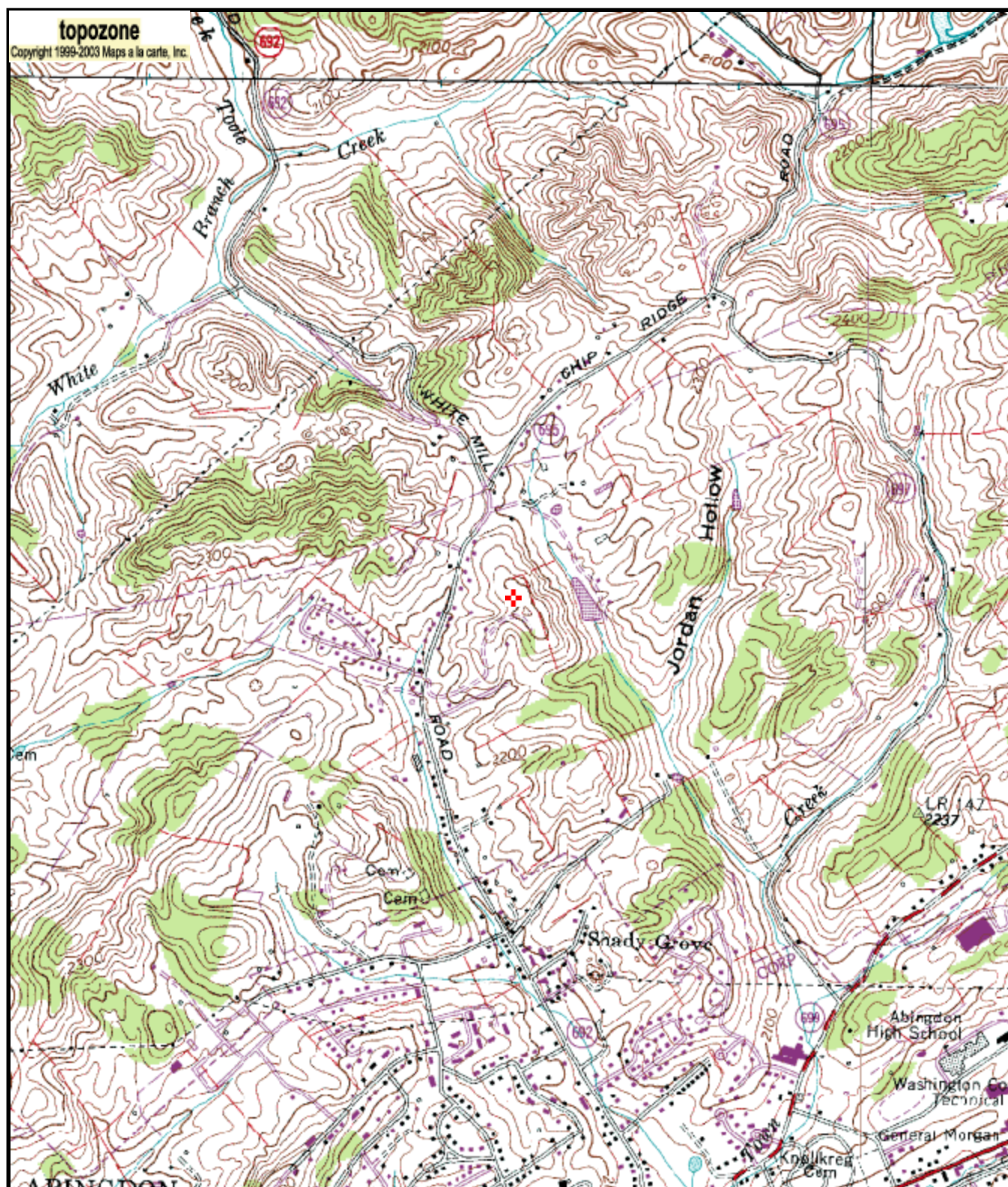


Appalachian Educational Commu												
Exhibit 12												
REFERENCE		CH# 276D - 103.1 MHz, Pwr= 0.01 kw, HAAT=68.8 M, COR= 713 M								DISPLAY DATES		
36 44 03 N.		Average Protected F(50-50)= 4.83 km								DATA 04-12-06		
81 58 18 W.		Ave. F(50-10) 40 dBu= 15.3 54 dBu= 6.7 80 dBu= 1.6 100 dBu= .2								SEARCH 06-21-06		
CH	CALL	TYPE	STATE	AZI. <--	DIST FILE #	LAT. LNG.	Pwr(kw) HAAT(M)	COR(M) INT(km)	PRO(km) LICENSEE	*IN* (Overlap in km)	*OUT*	
276D	W276BD	CP	C	144.8	3.17	36 42 39	0.010	692	3.7	-14.73*	-20.58*	
Abingdon		VA		324.8	BNPFT20030819AAG	81 57 04	42	11.8	Appalachian Educational Co			
276A	RADD	ADD		321.0	58.85	37 08 42	6.000	659	16.2	-13.51	32.53	
Clinchco		VA		140.8		82 23 22	32	69.2	East Kentucky Broadcasting			
276A	AL276	RSV		327.4	87.92	37 23 57	6.000	485	23.3	4.55	54.44	
Coal Run		KY		147.0	RM9803	82 30 32	66	80.2				
274A	AU062	VAC	N	85.7	30.40	36 45 15	6.000	909	44.0	21.42	-13.79*	
Glade Spring		VA		265.9	RM	81 37 56	276	4.0				
274A	RDEL	DEL		85.7	30.40	36 45 15	6.000	909	44.0	21.42	-13.79*	
Glade Spring		VA		265.9		81 37 56	276	4.0	Jbl Broadcasting, Inc.			
274A	AP274	APP		85.7	30.40	36 45 15	0.000	0	0.0	25.44	30.18	
Glade Spring		VA		265.9	BSFH20050812AWY	81 37 56	-633	0.0	Asradio, Llc			
276A	WIKQ	LIC	CN	221.4	89.66	36 07 40	6.000	599	30.4	-5.56	40.17	
Tusculum		TN		41.0	BLH19960111KY	82 37 57	117	89.4	Radio Greeneville, Inc.			
275D	AP275	APP	C	227.8	22.90	36 35 45	0.010	639	3.6	12.13	11.40	
Bristol		VA		47.7	BNPFT20030317LKV	82 09 42	40	5.1	Virginia Tech Foundation,			
276A	RDEL	DEL		327.9	96.16	37 27 57	6.000	442	25.6	9.72	60.39	
Coal Run		KY		147.5		82 33 04	81	83.3	East Kentucky Broadcasting			
276A	WPKEFM	LIC	ZCX	327.9	96.16	37 27 57	1.200	573	27.5	13.62	58.48	
Coal Run		KY		147.5	BLH20020820ABI	82 33 04	212	79.4	East Kentucky Broadcasting			
274A	AP274	APP	NCX	76.6	38.15	36 48 45	6.000	795	34.7	30.64	3.23	
Glade Spring		VA		256.9	BNPH20060308ALW	81 33 20	155	3.3	Asradio, Llc			
275D	AP275	APP	C	231.6	26.03	36 35 19	0.010	685	6.0	12.17	12.43	
Bristol		TN		51.5	BNPFT20030313AFY	82 12 00	106	8.4	Appalachian Educational Co			
273A	RADD	ADD		63.8	42.75	36 54 10	6.000	841	15.8	38.03	26.78	
Marion		VA		244.1		81 32 27	21	1.6	Jbl Broadcasting, Inc.			
273A	WOLDFM	LIC	CN	63.8	42.75	36 54 10	0.440	1119	25.7	38.13	16.79	
Marion		VA		244.1	BLH19901214KF	81 32 27	299	1.5	Emerald Sound, Inc.			
274C3	RADD	ADD		247.4	59.66	36 31 36	25.000	543	45.8	50.13	13.66	
Weber City		VA		67.0		82 35 13	148	4.9	Jbl Broadcasting, Inc.			
275D	AP275	APP	C	209.3	42.30	36 24 07	0.010	796	9.6	22.83	24.26	
Elizabethton		TN		29.2	BNPFT20030314BED	82 12 12	270	13.5	Bristol Broadcasting Co.,			
274D	AP274	APP	C	203.6	36.33	36 26 03	0.010	1316	15.3	30.16	20.81	
Elizabethton		TN		23.5	BNPFT20030313ASQ	82 08 03	756	0.2	Appalachian Educational Co			
278A	WZVA	LIC	C	70.2	55.82	36 54 10	3.700	951	33.7	49.20	21.90	
Marion		VA		250.5	BLH20030930BCX	81 22 56	185	3.0	T.e.c.o. Broadcasting, Inc			
273D	AP273	APP	DV	209.3	42.30	36 24 07	0.056	800	14.7	35.76	27.33	
Johnson City		TN		29.2	BNPFT20030317ETN	82 12 12	274	0.5	Murray Communications			
275A	WELCFM	LIC	CN	22.5	82.10	37 25 01	1.800	680	24.0	39.54	48.94	
Welch		WV		202.7	BLH19900207KC	81 36 58	127	36.0	Pocahontas Broadcasting Co			
274D	AP274	APP	C	216.1	56.28	36 19 27	0.055	613	10.4	50.14	45.62	
Johnson City		TN		35.8	BNPFT20030317LPQ	82 20 30	139	0.5	Jill Short			
274D	AP274	APP	C	216.1	56.30	36 19 27	0.010	656	7.8	50.45	48.24	
Johnson City		TN		35.9	BNPFT20030313AGP	82 20 31	182	0.2	Appalachian Educational Co			
279D	AP279	APP	C	156.3	60.75	36 13 59	0.010	1413	10.6	54.59	49.94	
Boone		NC		336.4	BNPFT20030317ADG	81 41 55	330	0.2	Bible Broadcasting Network			
277A	WKVS	LIC	NCN	155.8	92.27	35 58 31	1.000	694	19.7	57.35	64.27	
Lenoir		NC		336.1	BLH19950928KB	81 33 05	112	29.0	Foothills Radio Group, Llc			
277A	WKVS.C	CP	NCX	155.9	92.28	35 58 30	0.940	707	20.5	56.11	63.46	
Lenoir		NC		336.1	BPH20041116ABM	81 33 07	126	30.2	Foothills Radio Group, Llc			

CH CITY	CALL	TYPE STATE	AZI. <--	DIST FILE #	LAT. LNG.	Pwr(kw) HAAT(M)	COR(M) INT(km)	PRO(km) LICENSEE	*IN* (Overlap in km)	*OUT*
274A Cumberland	WVEKFM	LIC KY	CN	284.0 103.5	85.30 BLH19941212KB	36 54 59 82 54 02	0.175 614	1280 0.9	29.8 Jbl Broadcasting, Inc.	77.26 55.27
274A Cumberland	RDEL	DEL KY		286.7 106.1	94.41	36 58 25 82 59 15	6.000 61	798 2.3	22.6 Jbl Broadcasting, Inc.	84.74 71.59

ERP and HAAT are on direct line to and from reference station.  
"\*"affixed to 'IN' or 'Out' values = site inside protected contour.



0 0.3 0.6 0.9 1.2 1.5 km  
0 0.2 0.4 0.6 0.8 1 mi

Map center is 36° 44' 03"N, 81° 58' 18"W (NAD27)

**Abingdon** quadrangle

Projection is UTM Zone 17 NAD83 Datum

M=-6.608  
G=-0.581