

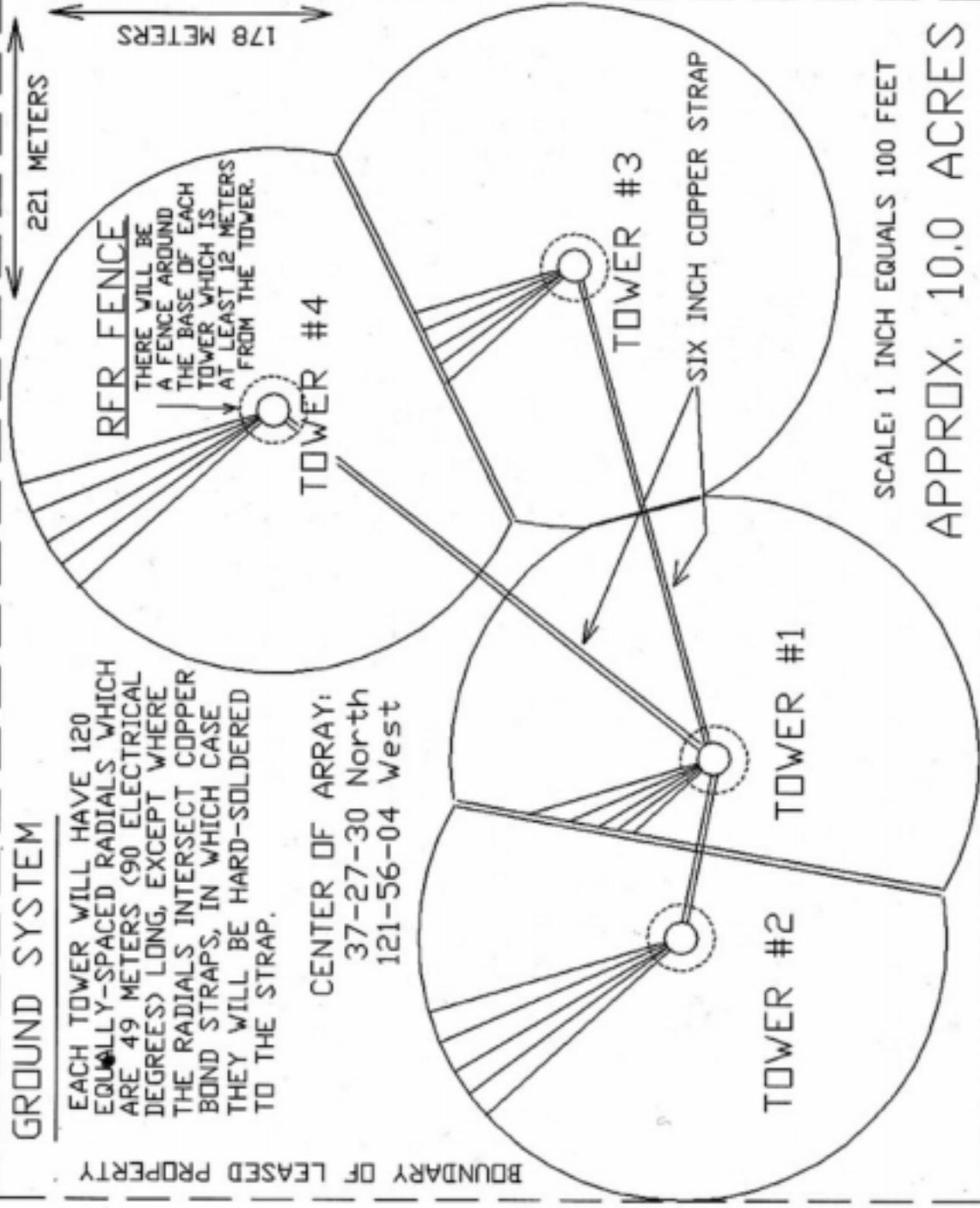
EXHIBIT C

PROPOSED PLOT PLAN AND GROUND SYSTEM

GROUND SYSTEM

EACH TOWER WILL HAVE 120 EQUALLY-SPACED RADIALS WHICH ARE 49 METERS (90 ELECTRICAL DEGREES) LONG, EXCEPT WHERE THE RADIALS INTERSECT COPPER BOND STRAPS, IN WHICH CASE THEY WILL BE HARD-SOLDERED TO THE STRAP.

CENTER OF ARRAY:
37-27-30 North
121-56-04 West



PROPOSED KYCY(AM)
50 kW DAYTIME
1550 kHz
SAN FRANCISCO, CA

MARCH 2001

GLEN CLARK & ASSOCIATES
CONSULTING ENGINEERS
PITTSBURGH, PA

DO NOT CONSTRUCT FROM THIS DRAWING