

Form 301
March 2010

Section 307(b) Statement
Attachment 1



U.S. Census Bureau

American FactFinder

FACT SHEET

Plattsburgh West CDP, New York

View a Fact Sheet for a **race, ethnic, or ancestry group**

Census 2000 Demographic Profile Highlights:

General Characteristics - show more >>

	Number	Percent	U.S.		
Total population	1,289			map	brief
Male	614	47.6	49.1%	map	brief
Female	675	52.4	50.9%	map	brief
Median age (years)	33.7	(X)	35.3	map	brief
Under 5 years	105	8.1	6.8%	map	
18 years and over	933	72.4	74.3%		
65 years and over	115	8.9	12.4%	map	brief
One race	1,274	98.8	97.6%		
White	1,235	95.8	75.1%	map	brief
Black or African American	18	1.4	12.3%	map	brief
American Indian and Alaska Native	8	0.6	0.9%	map	brief
Asian	8	0.6	3.6%	map	brief
Native Hawaiian and Other Pacific Islander	0	0.0	0.1%	map	brief
Some other race	5	0.4	5.5%	map	
Two or more races	15	1.2	2.4%	map	brief
Hispanic or Latino (of any race)	14	1.1	12.5%	map	brief
Household population	1,289	100.0	97.2%	map	brief
Group quarters population	0	0.0	2.8%	map	
Average household size	2.58	(X)	2.59	map	brief
Average family size	2.90	(X)	3.14	map	
Total housing units	601			map	
Occupied housing units	499	83.0	91.0%		brief
Owner-occupied housing units	407	81.6	66.2%	map	
Renter-occupied housing units	92	18.4	33.8%	map	brief
Vacant housing units	102	17.0	9.0%	map	

Social Characteristics - show more >>

	Number	Percent	U.S.		
Population 25 years and over	829				
High school graduate or higher	444	53.6	80.4%	map	brief
Bachelor's degree or higher	30	3.6	24.4%	map	
Civilian veterans (civilian population 18 years and over)	139	14.4	12.7%	map	brief
Disability status (population 5 years and over)	413	34.6	19.3%	map	brief
Foreign born	23	1.8	11.1%	map	brief
Male, Now married, except separated (population 15 years and over)	242	52.6	56.7%		brief
Female, Now married, except separated (population 15 years and over)	233	42.7	52.1%		brief
Speak a language other than English at home (population 5 years and over)	31	2.6	17.9%	map	brief

Economic Characteristics - show more >>

	Number	Percent	U.S.		
In labor force (population 16 years and over)	645	64.4	63.9%		brief
Mean travel time to work in minutes (workers 16 years and over)	13.6	(X)	25.5	map	brief
Median household income in 1999 (dollars)	25,294	(X)	41,994	map	
Median family income in 1999 (dollars)	24,797	(X)	50,046	map	
Per capita income in 1999 (dollars)	11,810	(X)	21,587	map	
Families below poverty level	83	24.0	9.2%	map	brief
Individuals below poverty level	340	25.9	12.4%	map	


Housing Characteristics - show more >>

	Number	Percent	U.S.		
Single-family owner-occupied homes	155				brief

Median value (dollars)	46,800	(X)	119,600	map	brief
Median of selected monthly owner costs	(X)	(X)			brief
With a mortgage (dollars)	850	(X)	1,088	map	
Not mortgaged (dollars)	232	(X)	295		

(X) Not applicable.

Source: U.S. Census Bureau, Summary File 1 (SF 1) and Summary File 3 (SF 3)

The letters PDF or symbol  indicate a document is in the Portable Document Format (PDF). To view the file you will need the Adobe® Acrobat® Reader, which is available for **free** from the Adobe web site.

Form 301
March 2010

Section 307(b) Statement
Attachment 2



U.S. Census Bureau

American FactFinder

FACT SHEET

Minerva town, Essex County, New York

View a Fact Sheet for a **race, ethnic, or ancestry group**

Census 2000 Demographic Profile Highlights:

General Characteristics - show more >>

	Number	Percent	U.S.		
Total population	796			map	brief
Male	418	52.5	49.1%	map	brief
Female	378	47.5	50.9%	map	brief
Median age (years)	41.6	(X)	35.3	map	brief
Under 5 years	31	3.9	6.8%	map	
18 years and over	612	76.9	74.3%		
65 years and over	145	18.2	12.4%	map	brief
One race	776	97.5	97.6%		
White	771	96.9	75.1%	map	brief
Black or African American	2	0.3	12.3%	map	brief
American Indian and Alaska Native	2	0.3	0.9%	map	brief
Asian	1	0.1	3.6%	map	brief
Native Hawaiian and Other Pacific Islander	0	0.0	0.1%	map	brief
Some other race	0	0.0	5.5%	map	
Two or more races	20	2.5	2.4%	map	brief
Hispanic or Latino (of any race)	1	0.1	12.5%	map	brief
Household population	796	100.0	97.2%	map	brief
Group quarters population	0	0.0	2.8%	map	
Average household size	2.48	(X)	2.59	map	brief
Average family size	2.95	(X)	3.14	map	
Total housing units	648			map	
Occupied housing units	321	49.5	91.0%		brief
Owner-occupied housing units	276	86.0	66.2%	map	
Renter-occupied housing units	45	14.0	33.8%	map	brief
Vacant housing units	327	50.5	9.0%	map	

Social Characteristics - show more >>

	Number	Percent	U.S.		
Population 25 years and over	561				
High school graduate or higher	471	84.0	80.4%	map	brief
Bachelor's degree or higher	98	17.5	24.4%	map	
Civilian veterans (civilian population 18 years and over)	145	23.9	12.7%	map	brief
Disability status (population 5 years and over)	159	20.8	19.3%	map	brief
Foreign born	13	1.6	11.1%	map	brief
Male, Now married, except separated (population 15 years and over)	184	55.3	56.7%		brief
Female, Now married, except separated (population 15 years and over)	192	62.7	52.1%		brief
Speak a language other than English at home (population 5 years and over)	22	2.9	17.9%	map	brief

Economic Characteristics - show more >>

	Number	Percent	U.S.		
In labor force (population 16 years and over)	384	60.7	63.9%		brief
Mean travel time to work in minutes (workers 16 years and over)	25.6	(X)	25.5	map	brief
Median household income in 1999 (dollars)	30,903	(X)	41,994	map	
Median family income in 1999 (dollars)	37,500	(X)	50,046	map	
Per capita income in 1999 (dollars)	15,531	(X)	21,587	map	
Families below poverty level	25	11.3	9.2%	map	brief
Individuals below poverty level	107	13.6	12.4%	map	


Housing Characteristics - show more >>

	Number	Percent	U.S.		
Single-family owner-occupied homes	160				brief

Median value (dollars)	78,200	(X)	119,600	map	brief
Median of selected monthly owner costs	(X)	(X)			brief
With a mortgage (dollars)	750	(X)	1,088	map	
Not mortgaged (dollars)	243	(X)	295		

(X) Not applicable.

Source: U.S. Census Bureau, Summary File 1 (SF 1) and Summary File 3 (SF 3)

The letters PDF or symbol  indicate a document is in the Portable Document Format (PDF). To view the file you will need the Adobe® Acrobat® Reader, which is available for **free** from the Adobe web site.

Form 301
March 2010


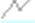


Section 307(b) Statement
Attachment 3

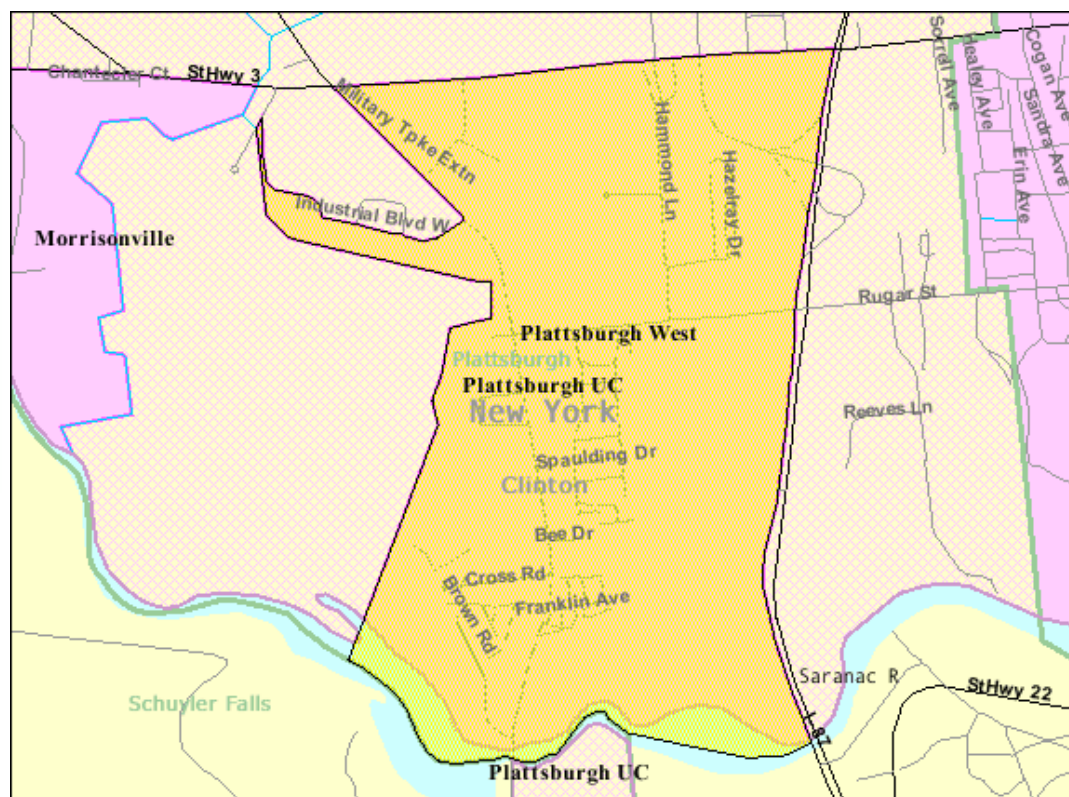
Plattsburgh West CDP, New York

Boundaries

-  State
-  '00 County
-  '00 Co Sub
-  '00 Subbarrio
-  '00 Place
-  '00 Place
-  '00 Con City
-  '00 Urban Area
-  '00 Urban Area

Features

-  Major Road
-  Street
-  Stream/Waterbody
-  Stream/Waterbody



2.8 miles across

Close

Form 301
March 2010

Section 307(b) Statement
Attachment 4

[Home](#) > [Printed Air Photo Maps](#) > [New York Maps](#) > [Pl](#) > Plattsburgh West, NY New York Aerial Photography Map 2008

Plattsburgh West, NY New York Aerial Photography Map 2008



CODE: APM-3658601

Price: \$14.99

Size of Map:

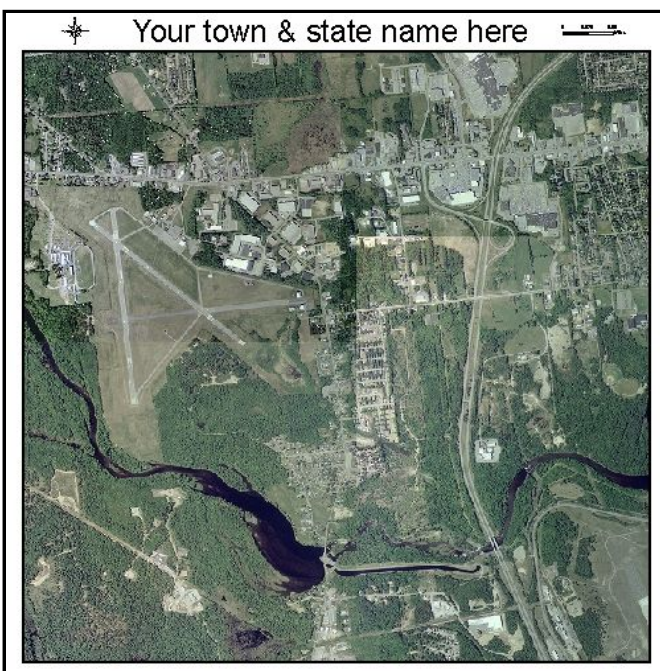
- ☒ select map size
- ☐ 18 x 18 Inch
- ☐ 24 x 24 Inch (+\$5.00)
- ☐ 36 x 36 Inch (+\$10.00)

Quantity:

1

Description

[Send to friend](#)



Choice of 18, 24, or 36 inch printed map
2008 aerial photography

Detail at 1:1 from center of the map.



Form 301
March 2010

Section 307(b) Statement
Attachment 5

Google maps Address

To see all the details that are visible on the screen, use the "Print" link next to the map.

[Get Directions](#) [My Maps](#)

[Print](#) [Send](#) [Link](#)

