

TECHNICAL EXHIBIT
DTV MAXIMIZATION APPLICATION
STATION WTUV(DT)
MEMPHIS, TENNESSEE
CH 23 1000 KW (MAX-DA) 261 M

Technical Narrative

This Technical Exhibit supports an application for digital television (DTV) station WTUV(DT) for its "maximized" DTV operation at Memphis, Tennessee. This application requests a modification of construction permit (CP) for WTUV(DT) digital television operation on channel 23 at Memphis with a directional effective radiated power of 1000 kilowatts. WTUV(DT) intends to use a Dielectric TFU-30GTH/VP-R 6T130 directional transmitting antenna for digital operation.

Proposed Facilities

Station WTUV(DT) proposes to operate DTV channel 23 from its authorized DTV construction permit facility. The antenna height above average terrain for the channel 23 DTV operation will be 261 meters. The proposed WTUV(DT) effective radiated power exceeds the Commission's *Appendix B* allocated maximum effective radiated power in some azimuthal directions for WTUV(DT).¹ Therefore, an allocation study was completed to ensure no prohibited interference would occur.

¹ See Seventh Report And Order And Eighth Further Notice Of Proposed Rule Making in the Matter of Advanced Television Systems and their

The proposed DTV transmitter site will be located at the authorized WTWV(DT) tower. Therefore, the proposed site location is:

35° 12' 34" North Latitude
89° 49' 01" West Longitude

A sketch of antenna and pertinent elevations are included as Figure 1.

The Appendix contains the vertical and horizontal plane radiation pattern for the proposed antenna system.

Figure 2 is a map showing the proposed DTV predicted coverage contour and the associated DTV appendix B Noise-Limited coverage contour. The extent of the contours have been calculated using the normal FCC prediction method. The Memphis city limits were derived from information contained in the 2000 U.S. Census of Population and Housing.

Population Served

The herein proposed WTWV(DT) "maximized" facility is predicted to serve 1,416,125 persons, post-transition based upon the 2000 Census. WTWV(DT)'s associated Appendix B facility is predicted to serve 1,415,000 persons. Therefore, the herein proposed WTWV(DT) facility would serve more than 100% of WTWV(DT)'s Appendix B population.

Allocation Considerations

The proposed WTWV(DT) Channel 23 facility meets the requirements of Section 73.623 of the FCC Rules concerning predicted interference to other Appendix B DTV allotments. Longley-Rice interference analyses were conducted pursuant to the requirements of the FCC Rules; OET Bulletin No. 69; and published FCC guidelines for preparation of such interference analyses. The Longley-Rice interference analyses were conducted using the software developed by du Treil, Lundin & Rackley, Inc. based on the FCC published software routines.² Stations selected for analysis were determined pursuant to the distance requirements outlined in the FCC DTV Processing Guidelines Public Notice. The results of the interference analyses for the proposed WTWV(DT) facility are summarized herein at Figure 3. As indicated therein, the proposed facility will meet the 0.5% criterion outlined in the FCC Rules and published guidelines with respect to all considered stations.³

Radiofrequency Electromagnetic Field Exposure

The proposed WTWV(DT) facilities were evaluated in terms of potential radiofrequency electromagnetic field exposure at ground level to workers and the general public. The radiation center for the proposed WTWV(DT) antenna is located 265 meters above ground level. The maximum

² The duTreil, Lundin & Rackley, Inc. DTV interference analysis program is based on the program and procedures outlined by the FCC in the Sixth Report and Order; subsequent Memorandum Opinion and Order; and FCC OET Bulletin No. 69. A nominal grid size resolution of 2 km was employed.

³ Interference analysis results reflect the net change in interference to a given station considering the interference predicted to occur from all other stations (i.e. "masking") including the allotment facility for WTWV(DT). This properly reflects the net interference change for determining compliance with the FCC 0.5% *de minimis* standard.

effective radiated power is 1000 kilowatts. A "worst case" downward relative field value of 0.1 is assumed for the antenna's downward radiation. The calculated power density at a point 2 meters above ground level is 0.0048 mW/cm². This is less than 5 percent of the Commission's recommended limit of 0.35 mW/cm² for channel 23 for an "uncontrolled" environment.

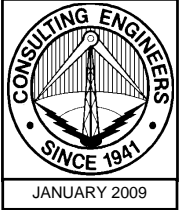
Access to the transmitting site is restricted and appropriately marked with warning signs. As this is a multi-user site an agreement between the stations will control access. In the event that workers or other authorized personnel enter restricted areas or climb the tower, appropriate measures will be taken to assure worker safety with respect to radio frequency radiation exposure. Such measures include reducing the average exposure by spreading out the work over a longer period of time, wearing "accepted" RFR protective clothing and/or RFR exposure monitors or scheduling work when the stations are at reduced power or shut down. The proposed WTWV(DT) operation appears to be otherwise categorically excluded from environmental processing.

It is noted that this statement only addresses the potential for radiofrequency electromagnetic field exposure. All other aspects of the environmental processing analysis will be or already have been provided to the FCC by the tower owner.

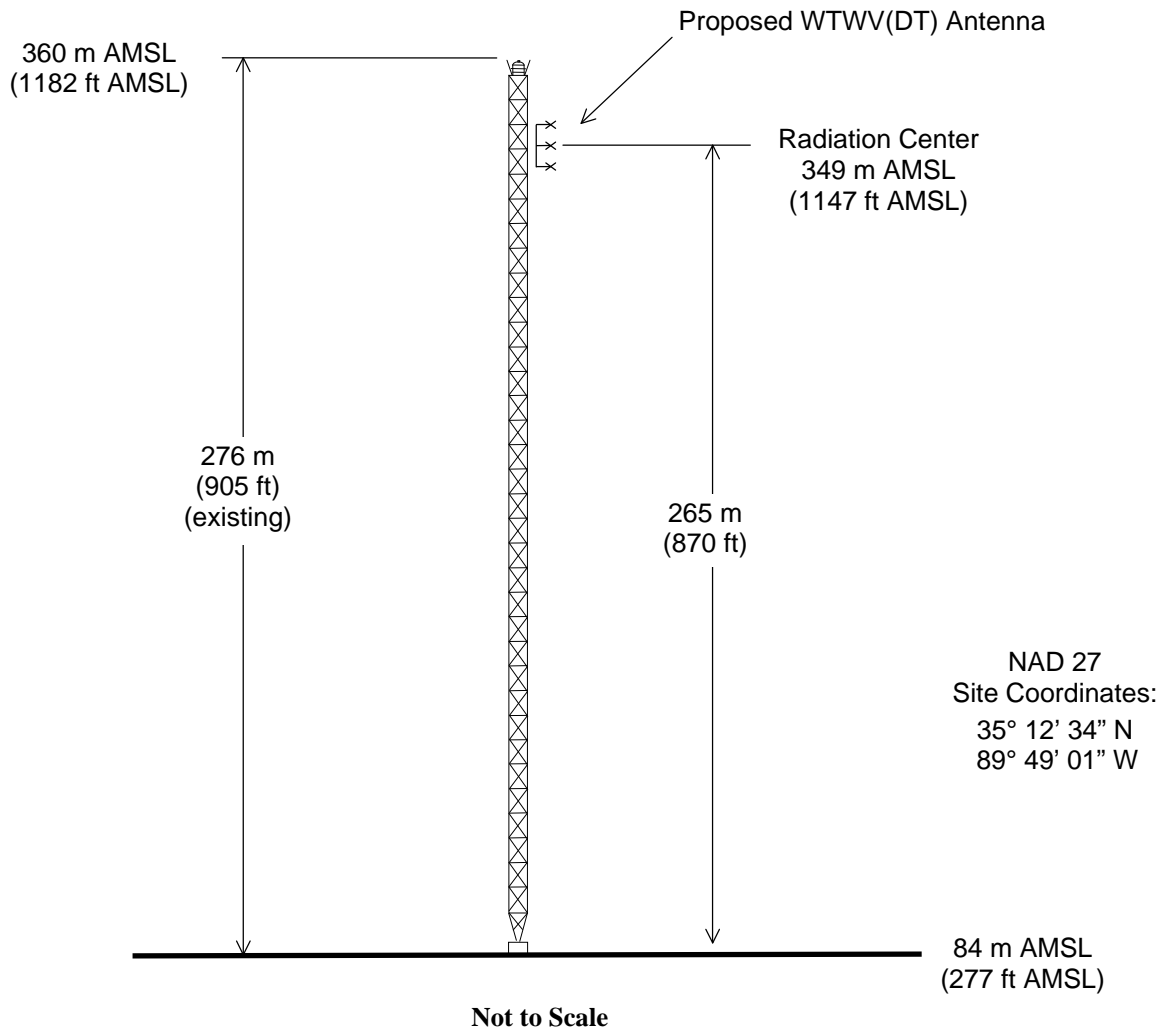
Charles Cooper

du Treil, Lundin & Rackley, Inc.
201 Fletcher Avenue
Sarasota, Florida 32437
941.329.6000

January 13, 2009



ASR: 1249321



ANTENNA AND SUPPORTING STRUCTURE

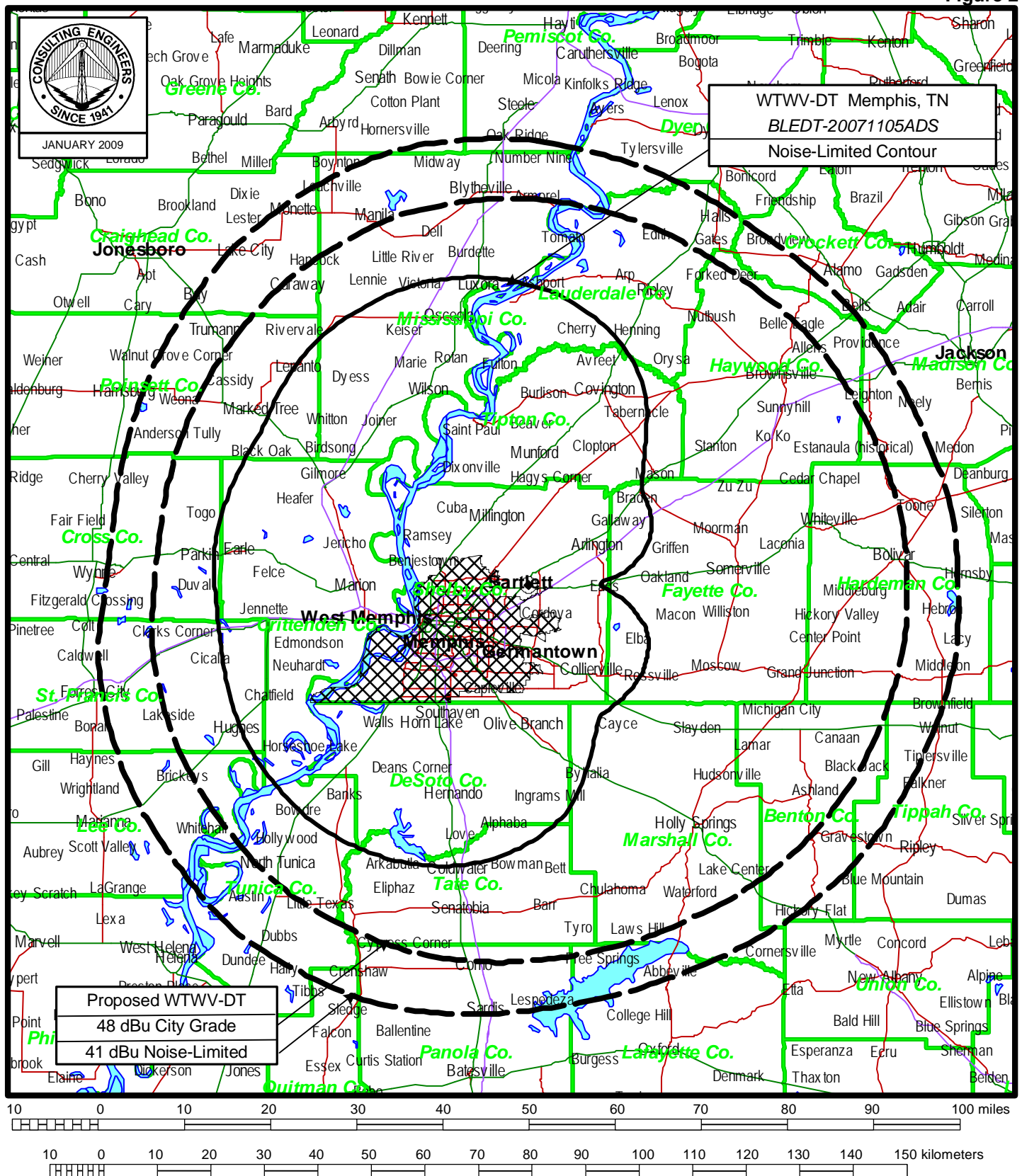
DTV STATION WTWV(DT)

MEMPHIS, TENNESSEE

CH 23 1000 KW (MAX-DA) 261 M

du Treil, Lundin & Rackley, Inc. Sarasota, Florida

Figure 2



PREDICTED COVERAGE CONTOURS

TELEVISION STATION WTVV-DT

MEMPHIS, TENNESSEE

CH 23 1000 KW (MAX-DA) 261 M

du Treil, Lundin & Rackley, Inc Sarasota, Florida

Figure 3

TW Census data selected 2000
Post Transition Data Base Selected /export/home/cdbb/pt_tvdb.sff

TV INTERFERENCE and SPACING ANALYSIS PROGRAM

Date: 01-13-2009 Time: 11:05:46

Record Selected for Analysis

WTWV USERRECORD-01 MEMPHIS TN US
Channel 23 ERP 1000. kW HAAT 258. m RCAMSL 00349 m
Latitude 035-12-34 Longitude 0089-49-01
Status APP Zone 2 Border
Dir Antenna Make usr Model 00000000006018 Beam tilt N Ref Azimuth 0.
Last update Cutoff date Docket
Comments
Applicant

Cell Size for Service Analysis 2.0 km/side

Distance Increments for Longley-Rice Analysis 1.00 km

Facility meets maximum height/power limits

Azimuth (Deg)	ERP (kW)	HAAT (m)	41.0 dBu F(50,90) (km)
0.0	874.225	262.6	89.9
45.0	567.009	262.2	85.6
90.0	964.324	235.2	86.8
135.0	703.921	254.6	86.4
180.0	651.249	256.9	86.0
225.0	979.110	264.8	91.5
270.0	579.121	259.9	85.5
315.0	815.409	265.3	89.6

Evaluation toward Class A Stations

No Spacing violations or contour overlap to Class A stations

Class A Evaluation Complete

SPACING VIOLATION FOUND BETWEEN STATION

WTWV 23 MEMPHIS TN USERRECORD01

Figure 3

and station

SHORT TO: WJKT 16 JACKSON TN BLCT 19920224KF
035-47-22 0089-06-14
Req. separation => 24.1 <= 96.6 Actual separation 91.2 Short 5.4(67.1) km

SHORT TO: WMAO-TV 23 GREENWOOD MS BPET 20080114AAT
033-22-34 0090-32-32
Req. separation 244.6 Actual separation 214.0 Short 30.6 km

SHORT TO: WMAO-TV 23 GREENWOOD MS BSTA 20080801AUO
033-22-34 0090-32-32
Req. separation 244.6 Actual separation 214.0 Short 30.6 km

SHORT TO: WMAO-TV 23 GREENWOOD MS BMLET 20031212AAT
033-22-34 0090-32-32
Req. separation 244.6 Actual separation 214.0 Short 30.6 km

SHORT TO: WTWV 23 MEMPHIS TN DTVPLN DTVP0859
35 -28-03 90 -11-27
Req. separation 223.7 Actual separation 44.4 Short 179.3 km

LANDMOBILE SPACING VIOLATIONS FOUND

NONE

Proposed facility OK to FCC Monitoring Stations

Proposed facility OK toward West Virginia quiet zone

Proposed facility OK toward Table Mountain

Proposed facility is beyond the Canadian coordination distance

Proposed facility is beyond the Mexican coordination distance

Proposed station is OK toward AM broadcast stations

Start of Interference Analysis

Channel	Proposed Station Call	City/State	ARN
23	WTWV	MEMPHIS TN	USERRECORD01

Stations Potentially Affected by Proposed Station

Chan	Call	City/State	Dist(km)	Status	Application Ref. No.
------	------	------------	----------	--------	----------------------

Figure 3

19	WJTE-LP	JACKSON TN	101.5	APP	BMPTTA	-20080804AEI
19	WJTE-LP	JACKSON TN	111.5	CP	BPTTA	-20030108AAX
19	WJTE-LP	JACKSON TN	111.5	LIC	BLTTL	-19990809JI
22	WFIQ	FLORENCE AL	198.2	LIC	BLEDT	-20060718ACG
22	WFIQ	FLORENCE AL	198.2	PLN	DTVPLN	-DTVP0788
22	WFIQ	FLORENCE AL	198.2	CP	BPEDT	-20080619AGU
23	KLMB-LP	EL DORADO AR	342.9	LIC	BLTTL	-19990329JC
23	KLMB-LP	EL DORADO AR	342.9	CP	BDFCDTA	-20060331BPL
23	KJEP-CA	NASHVILLE AR	392.0	CP	BDFCDTA	-20070103AAQ
23	KJEP-CA	NASHVILLE AR	392.0	LIC	BLTTL	-19960111AE
23	W23BV	EVANSVILLE IN	368.7	LIC	BLTTA	-20021104AEE
23	W23BV	EVANSVILLE IN	368.7	CP	BDFCDTA	-20080925AAV
23	KOZK	SPRINGFIELD MO	355.0	LIC	BLEDT	-20030911AAS
23	KOZK	SPRINGFIELD MO	355.0	PLN	DTVPLN	-DTVP0847
23	WNAB	NASHVILLE TN	296.8	LIC	BLCDD	-20040712AAO
23	WNAB	NASHVILLE TN	296.8	PLN	DTVPLN	-DTVP0860
24	KVTN	PINE BLUFF AR	216.7	CP	BPCDD	-19990924AAQ
24	KVTN	PINE BLUFF AR	216.7	PLN	DTVPLN	-DTVP0869

%%%

Analysis of Interference to Affected Station 1

Analysis of current record

Channel	Call	City/State	Application	Ref. No.
19	WJTE-LP	JACKSON TN	BMPTTA	-20080804AEI

Stations Potentially Affecting This Station

Chan	Call	City/State	Dist(km)	Status	Application	Ref. No.
16	WJKT	JACKSON TN	29.1	LIC	BLCT	-19920224KF
19	WIIQ	DEMOPOLIS AL	375.7	PLN	DTVPLN	-DTVP0660
19	WHNT-TV	HUNTSVILLE AL	232.1	PLN	DTVPLN	-DTVP0661
19	WUSI-TV	OLNEY IL	360.2	PLN	DTVPLN	-DTVP0674
19	WBKI-TV	CAMPBELLSVILLE KY	367.7	PLN	DTVPLN	-DTVP0679
19	WIIQ	DEMOPOLIS AL	375.7	LIC	BLEDT	-20031023AAI
19	WHNT-TV	HUNTSVILLE AL	232.1	CP	BPCDD	-20080313AAC
19	WHNT-TV	HUNTSVILLE AL	232.1	LIC	BLCT	-20011116ABY
19	KTEJ	JONESBORO AR	177.0	LIC	BLET	-20060627AAF
19	WUSI-TV	OLNEY IL	360.2	LIC	BLEDT	-20060619ABG
19	WBKI-TV	CAMPBELLSVILLE KY	367.7	CP MOD	BMPCDD	-20080718AQK
19	WAZE-TV	MADISONVILLE KY	228.4	LIC	BLCT	-19921030KF
21	WKMU	MURRAY KY	119.2	LIC	BLET	-19830812KO
23	WTWV	MEMPHIS TN	124.4	PLN	DTVPLN	-DTVP0859
34	NEW	SENATOBIA MS	138.3	CP	BPET	-19961001KI
34	NEW	SENATOBIA MS	101.5	CP	BPEDT	-20080317ABG
23	WTWV	MEMPHIS TN	101.5	APP	USERRECORD-01	

Proposed station is beyond the site to
nearest cell evaluation distance

#####

Analysis of Interference to Affected Station 2

Figure 3

Analysis of current record

Channel	Call	City/State	Application	Ref. No.
19	WJTE-LP	JACKSON TN	BPTTA	-20030108AAX

Stations Potentially Affecting This Station

Chan	Call	City/State	Dist(km)	Status	Application	Ref. No.
16	WJKT	JACKSON TN	33.6	LIC	BLCT	-19920224KF
18	W18BL	ADAMSVILLE TN	62.0	LIC	BLTTL	-19940511JH
19	WIIQ	DEMOPOLIS AL	380.2	PLN	DTVPLN	-DTVP0660
19	WHNT-TV	HUNTSVILLE AL	227.9	PLN	DTVPLN	-DTVP0661
19	WUSI-TV	OLNEY IL	352.6	PLN	DTVPLN	-DTVP0674
19	WBKI-TV	CAMPBELLSVILLE KY	357.6	PLN	DTVPLN	-DTVP0679
19	WIIQ	DEMOPOLIS AL	380.2	LIC	BLEDT	-20031023AAI
19	WHNT-TV	HUNTSVILLE AL	227.9	CP	BPCDT	-20080313AAC
19	WHNT-TV	HUNTSVILLE AL	227.9	LIC	BLCT	-20011116ABY
19	KTEJ	JONESBORO AR	183.8	LIC	BLET	-20060627AAF
19	WUSI-TV	OLNEY IL	352.6	LIC	BLEDT	-20060619ABG
19	WBKI-TV	CAMPBELLSVILLE KY	357.6	CP MOD	BMPCDT	-20080718AQK
19	WAZE-TV	MADISONVILLE KY	218.9	LIC	BLCT	-19921030KF
21	WKMU	MURRAY KY	111.4	LIC	BLET	-19830812KO
23	WTWV	MEMPHIS TN	133.2	PLN	DTVPLN	-DTVP0859
34	NEW	SENATOBIA MS	111.5	CP	BPEDT	-20080317ABG
23	WTWV	MEMPHIS TN	111.5	APP	USERRECORD-01	

Proposed station is beyond the site to
nearest cell evaluation distance

#####

Analysis of Interference to Affected Station 3

Analysis of current record

Channel	Call	City/State	Application	Ref. No.
19	WJTE-LP	JACKSON TN	BLTTL	-19990809JI

Stations Potentially Affecting This Station

Chan	Call	City/State	Dist(km)	Status	Application	Ref. No.
19	WIIQ	DEMOPOLIS AL	380.2	PLN	DTVPLN	-DTVP0660
19	WHNT-TV	HUNTSVILLE AL	227.9	PLN	DTVPLN	-DTVP0661
19	WUSI-TV	OLNEY IL	352.6	PLN	DTVPLN	-DTVP0674
19	WBKI-TV	CAMPBELLSVILLE KY	357.6	PLN	DTVPLN	-DTVP0679
19	WIIQ	DEMOPOLIS AL	380.2	LIC	BLEDT	-20031023AAI
19	WHNT-TV	HUNTSVILLE AL	227.9	CP	BPCDT	-20080313AAC
19	WHNT-TV	HUNTSVILLE AL	227.9	LIC	BLCT	-20011116ABY
19	KTEJ	JONESBORO AR	183.8	LIC	BLET	-20060627AAF
19	WUSI-TV	OLNEY IL	352.6	LIC	BLEDT	-20060619ABG
19	WBKI-TV	CAMPBELLSVILLE KY	357.6	CP MOD	BMPCDT	-20080718AQK
19	WAZE-TV	MADISONVILLE KY	218.9	LIC	BLCT	-19921030KF
23	WTWV	MEMPHIS TN	133.2	PLN	DTVPLN	-DTVP0859
34	NEW	SENATOBIA MS	111.5	CP	BPEDT	-20080317ABG
23	WTWV	MEMPHIS TN	111.5	APP	USERRECORD-01	

Figure 3

Proposed station is beyond the site to
nearest cell evaluation distance

#####

Analysis of Interference to Affected Station 4

Analysis of current record

Channel	Call	City/State	Application	Ref. No.
22	WFIQ	FLORENCE AL	BLEDT	-20060718ACG

Stations Potentially Affecting This Station

Chan	Call	City/State	Dist(km)	Status	Application	Ref. No.
21	WUXP-TV	NASHVILLE TN	207.7	CP MOD	BMPCDT	-20010525AAJ
21	WUXP-TV	NASHVILLE TN	207.7	PLN	DTVPLN	-DTVP0782
22	WBMM	TUSKEGEE AL	327.1	CP	BPCDT	-20080618ADG
22	WBMM	TUSKEGEE AL	327.6	PLN	DTVPLN	-DTVP0789
22	KATV	LITTLE ROCK AR	404.8	PLN	DTVPLN	-DTVP0790
22	KBSI	CAPE GIRARDEAU MO	352.7	LIC	BLCDDT	-20041213ABC
22	KBSI	CAPE GIRARDEAU MO	352.7	PLN	DTVPLN	-DTVP0808
22	WHLT	HATTIESBURG MS	377.7	PLN	DTVPLN	-DTVP0809
22	WHLT	HATTIESBURG MS	377.7	CP MOD	BMPCDT	-20080619ACC
22	WCTE	COOKEVILLE TN	283.5	PLN	DTVPLN	-DTVP0822
22	WCTE	COOKEVILLE TN	283.5	CP	BPEDT	-20080317ADB
22	WCTE	COOKEVILLE TN	283.5	APP	BMPEDT	-20080620ADW
23	WNAB	NASHVILLE TN	207.7	LIC	BLCDDT	-20040712AAO
23	WNAB	NASHVILLE TN	207.7	PLN	DTVPLN	-DTVP0860
23	WTWV	MEMPHIS TN	198.2	APP	USERRECORD-01	

Proposed station is beyond the site to
nearest cell evaluation distance

#####

Analysis of Interference to Affected Station 5

Analysis of current record

Channel	Call	City/State	Application	Ref. No.
22	WFIQ	FLORENCE AL	DTVPLN	-DTVP0788

Stations Potentially Affecting This Station

Chan	Call	City/State	Dist(km)	Status	Application	Ref. No.
21	WUXP-TV	NASHVILLE TN	207.7	CP MOD	BMPCDT	-20010525AAJ
21	WUXP-TV	NASHVILLE TN	207.7	PLN	DTVPLN	-DTVP0782
22	WBMM	TUSKEGEE AL	327.1	CP	BPCDT	-20080618ADG
22	WBMM	TUSKEGEE AL	327.6	PLN	DTVPLN	-DTVP0789
22	KATV	LITTLE ROCK AR	404.8	PLN	DTVPLN	-DTVP0790
22	KBSI	CAPE GIRARDEAU MO	352.7	LIC	BLCDDT	-20041213ABC
22	KBSI	CAPE GIRARDEAU MO	352.7	PLN	DTVPLN	-DTVP0808
22	WHLT	HATTIESBURG MS	377.7	PLN	DTVPLN	-DTVP0809

Figure 3

22	WHLT	HATTIESBURG MS	377.7	CP MOD	BMPCDT	-20080619ACC
22	WCTE	COOKEVILLE TN	283.5	PLN	DTVPLN	-DTVP0822
22	WCTE	COOKEVILLE TN	283.5	CP	BPEDT	-20080317ADB
22	WCTE	COOKEVILLE TN	283.5	APP	BMPEDT	-20080620ADW
23	WNAB	NASHVILLE TN	207.7	LIC	BLCDDT	-20040712AAO
23	WNAB	NASHVILLE TN	207.7	PLN	DTVPLN	-DTVP0860
23	WTWV	MEMPHIS TN	198.2	APP	USERRECORD-01	

Proposed station is beyond the site to
nearest cell evaluation distance

#####

Analysis of Interference to Affected Station 6

Analysis of current record

Channel	Call	City/State	Application	Ref. No.
22	WFIQ	FLORENCE AL	BPEDT	-20080619AGU

Stations Potentially Affecting This Station

Chan	Call	City/State	Dist(km)	Status	Application	Ref. No.
21	WUXP-TV	NASHVILLE TN	207.7	CP MOD	BMPCDT	-20010525AAJ
21	WUXP-TV	NASHVILLE TN	207.7	PLN	DTVPLN	-DTVP0782
22	WBMM	TUSKEGEE AL	327.1	CP	BPCDT	-20080618ADG
22	WBMM	TUSKEGEE AL	327.6	PLN	DTVPLN	-DTVP0789
22	KATV	LITTLE ROCK AR	404.8	PLN	DTVPLN	-DTVP0790
22	KBSI	CAPE GIRARDEAU MO	352.7	LIC	BLCDDT	-20041213ABC
22	KBSI	CAPE GIRARDEAU MO	352.7	PLN	DTVPLN	-DTVP0808
22	WHLT	HATTIESBURG MS	377.7	PLN	DTVPLN	-DTVP0809
22	WHLT	HATTIESBURG MS	377.7	CP MOD	BMPCDT	-20080619ACC
22	WCTE	COOKEVILLE TN	283.5	PLN	DTVPLN	-DTVP0822
22	WCTE	COOKEVILLE TN	283.5	CP	BPEDT	-20080317ADB
22	WCTE	COOKEVILLE TN	283.5	APP	BMPEDT	-20080620ADW
23	WNAB	NASHVILLE TN	207.7	LIC	BLCDDT	-20040712AAO
23	WNAB	NASHVILLE TN	207.7	PLN	DTVPLN	-DTVP0860
23	WTWV	MEMPHIS TN	198.2	APP	USERRECORD-01	

Proposed station is beyond the site to
nearest cell evaluation distance

#####

Analysis of Interference to Affected Station 7

Analysis of current record

Channel	Call	City/State	Application	Ref. No.
23	KLMB-LP	EL DORADO AR	BLTTL	-19990329JC

Stations Potentially Affecting This Station

Chan	Call	City/State	Dist(km)	Status	Application	Ref. No.
15	KTAL-TV	TEXARKANA TX	130.4	LIC	BLCDDT	-20070404ABW

Figure 3

15	KTAL-TV	TEXARKANA TX	130.4	PLN	DTVPLN	-DTVP0548
21	KPXJ	MINDEN LA	132.6	LIC	BLCDDT	-20050930AAL
21	KPXJ	MINDEN LA	132.6	PLN	DTVPLN	-DTVP0763
23	KLPB-TV	LAFAYETTE LA	322.5	LIC	BLEDT	-20031117ACC
23	KLPB-TV	LAFAYETTE LA	322.5	PLN	DTVPLN	-DTVP0845
23	WMAO-TV	GREENWOOD MS	197.1	APP	BPET	-20080114AAT
23	WMAO-TV	GREENWOOD MS	197.1	APP	BSTA	-20080801AUO
23	WMAO-TV	GREENWOOD MS	197.1	LIC	BMLET	-20031212AAT
23	WTWV	MEMPHIS TN	338.0	PLN	DTVPLN	-DTVP0859
24	KLTS-DR	SHREVEPORT LA	132.3	APP	BPRM	-20080620AOC
24	KLTS-TV	SHREVEPORT LA	132.4	PLN	DTVPLN	-DTVP0883
24	KLTS-TV	SHREVEPORT LA	132.4	LIC	BLCT	-19780803IA
24	KLTS-TV	SHREVEPORT LA	132.3	APP	BMPEDT	-20081113AES
25	KLTS-TV	SHREVEPORT LA	132.4	CP	BPEDT	-20080314ABY
26	KVTH	HOT SPRINGS AR	134.6	CP	BPCDDT	-20080331APY
26	KVTH	HOT SPRINGS AR	134.6	PLN	DTVPLN	-DTVP0943
27	KTVE	EL DORADO AR	42.1	PLN	DTVPLN	-DTVP0984
27	KTVE	EL DORADO AR	42.1	LIC	BLCDDT	-20070105ABH
38	KASN	PINE BLUFF AR	143.1	CP	BPCT	-20010713AAU
38	KMCT-TV	WEST MONROE LA	91.0	LIC	BLCDDT	-20071113ADI
38	KMCT-TV	WEST MONROE LA	91.0	PLN	DTVPLN	-DTVP1367
23	WTWV	MEMPHIS TN	342.9	APP	USERRECORD-01	

Proposal causes no interference

#####

Analysis of Interference to Affected Station 8

Analysis of current record

Channel	Call	City/State	Application Ref. No.
23	KLMB-LP	EL DORADO AR	BDFCDTA -20060331BPL

Stations Potentially Affecting This Station

Chan	Call	City/State	Dist(km)	Status	Application Ref. No.
22	KATV	LITTLE ROCK AR	177.5	CP MOD	BMPCDDT -20080619ALF
22	KATV	LITTLE ROCK AR	146.9	PLN	DTVPLN -DTVP0790
23	KLPB-TV	LAFAYETTE LA	322.5	LIC	BLEDT -20031117ACC
23	KLPB-TV	LAFAYETTE LA	322.5	PLN	DTVPLN -DTVP0845
23	WTWV	MEMPHIS TN	338.0	PLN	DTVPLN -DTVP0859
23	KUVN-TV	GARLAND TX	408.6	PLN	DTVPLN -DTVP0863
23	KUVN-TV	GARLAND TX	408.6	CP MOD	BMPCDDT -20080618ADY
24	KVTN	PINE BLUFF AR	157.7	CP	BPCDDT -19990924AAQ
24	KVTN	PINE BLUFF AR	157.7	PLN	DTVPLN -DTVP0869
24	KLTS-DR	SHREVEPORT LA	132.3	APP	BPRM -20080620AOC
24	KLTS-TV	SHREVEPORT LA	132.4	PLN	DTVPLN -DTVP0883
24	KLTS-TV	SHREVEPORT LA	132.3	APP	BMPEDT -20081113AES
23	WTWV	MEMPHIS TN	342.9	APP	USERRECORD-01

Proposal causes no interference

#####

Analysis of Interference to Affected Station 9

Figure 3

Analysis of current record

Channel	Call	City/State	Application Ref. No.
23	KJEP-CA	NASHVILLE AR	BDFCDTA -20070103AAQ

Stations Potentially Affecting This Station

Chan	Call	City/State	Dist(km)	Status	Application Ref. No.
22	KATV	LITTLE ROCK AR	153.6	CP MOD	BMPCDT -20080619ALF
22	KATV	LITTLE ROCK AR	159.5	PLN	DTVPLN -DTVP0790
23	KOZK	SPRINGFIELD MO	365.0	LIC	BLEDT -20030911AAS
23	KOZK	SPRINGFIELD MO	365.0	PLN	DTVPLN -DTVP0847
23	WTWV	MEMPHIS TN	371.7	PLN	DTVPLN -DTVP0859
23	KUVN-TV	GARLAND TX	329.7	PLN	DTVPLN -DTVP0863
23	KUVN-TV	GARLAND TX	329.7	CP MOD	BMPCDT -20080618ADY
24	KVTN	PINE BLUFF AR	175.4	CP	BPCDT -19990924AAQ
24	KVTN	PINE BLUFF AR	175.4	PLN	DTVPLN -DTVP0869
24	KLTS-DR	SHREVEPORT LA	143.5	APP	BPRM -20080620AOC
24	KLTS-TV	SHREVEPORT LA	143.5	PLN	DTVPLN -DTVP0883
24	KLTS-TV	SHREVEPORT LA	143.5	APP	BMPEDT -20081113AES
23	WTWV	MEMPHIS TN	392.0	APP	USERRECORD-01

Proposed station is beyond the site to
nearest cell evaluation distance

#####

Analysis of Interference to Affected Station 10

Analysis of current record

Channel	Call	City/State	Application Ref. No.
23	KJEP-CA	NASHVILLE AR	BLTTT -19960111AE

Stations Potentially Affecting This Station

Chan	Call	City/State	Dist(km)	Status	Application Ref. No.
15	KTAL-TV	TEXARKANA TX	119.3	LIC	BLCDDT -20070404ABW
15	KTAL-TV	TEXARKANA TX	119.3	PLN	DTVPLN -DTVP0548
21	KHBS	FORT SMITH AR	145.5	LIC	BLCDDT -20031121AMR
21	KHBS	FORT SMITH AR	145.5	PLN	DTVPLN -DTVP0749
21	KPXJ	MINDEN LA	142.7	LIC	BLCDDT -20050930AAL
21	KPXJ	MINDEN LA	142.7	PLN	DTVPLN -DTVP0763
23	K23GT	HOT SPRINGS AR	95.3	LIC	BLTT -20050207AEE
23	KOZK	SPRINGFIELD MO	365.0	LIC	BLEDT -20030911AAS
23	KOZK	SPRINGFIELD MO	365.0	PLN	DTVPLN -DTVP0847
23	WMAO-TV	GREENWOOD MS	310.8	APP	BPET -20080114AAT
23	WMAO-TV	GREENWOOD MS	310.8	APP	BSTA -20080801AUO
23	WMAO-TV	GREENWOOD MS	310.8	LIC	BMLET -20031212AAT
23	KOKI-TV	TULSA OK	284.4	LIC	BLCT -20030416AAI
23	WTWV	MEMPHIS TN	371.7	PLN	DTVPLN -DTVP0859
23	KUVN-TV	GARLAND TX	329.7	LIC	BLCT -20030602BGW
23	KUVN-TV	GARLAND TX	329.7	PLN	DTVPLN -DTVP0863
23	KUVN-TV	GARLAND TX	329.7	CP MOD	BMPCDT -20080618ADY
25	KLTS-TV	SHREVEPORT LA	143.5	CP	BPEDT -20080314ABY
26	KVTH	HOT SPRINGS AR	84.8	CP	BPCDT -20080331APY

Figure 3

26	KVTH	HOT SPRINGS AR	84.8	PLN	DTVPLN	-DTVP0943
23	WTWV	MEMPHIS TN	392.0	APP	USERRECORD-01	

Proposed station is beyond the site to
nearest cell evaluation distance

#####

Analysis of Interference to Affected Station 11

Analysis of current record

Channel	Call	City/State	Application Ref. No.
23	W23BV	EVANSVILLE IN	BLTTA -20021104AEE

Stations Potentially Affecting This Station

Chan	Call	City/State	Dist(km)	Status	Application Ref. No.
16	WUSI-TV	OLNEY IL	93.6	LIC	BMLET -20030515AAM
19	WUSI-TV	OLNEY IL	93.6	PLN	DTVPLN -DTVP0674
19	WUSI-TV	OLNEY IL	93.6	LIC	BLEDT -20060619ABG
20	WAZE-TV	MADISONVILLE KY	73.8	PLN	DTVPLN -DTVP0723
20	WAZE-TV	MADISONVILLE KY	73.8	CP	BPCDT -19991101AHC
22	WVUT	VINCENNES IN	68.4	CP	BPEDT -20080530AAN
22	WVUT	VINCENNES IN	68.4	PLN	DTVPLN -DTVP0802
22	WVUT	VINCENNES IN	68.4	LIC	BLET -344
23	WBUI	DECATUR IL	231.0	LIC	BLCT -20010406ABK
23	WNOI-LP	FLORA IL	87.3	CP	BPTTL -20060710ADD
23	WNDY-TV	MARION IN	277.7	LIC	BLCT -19990430KE
23	WIPB	MUNCIE IN	301.5	CP MOD	BMPEDT -20080620AAH
23	WIPB	MUNCIE IN	301.5	PLN	DTVPLN -DTVP0844
23	WKZT-TV	ELIZABETHTOWN KY	169.3	LIC	BLET -19830404KF
23	KBSI	CAPE GIRARDEAU MO	178.4	LIC	BLCT -20050225ABQ
23	WPXK	JELICO TN	371.5	LIC	BLCDDT -20020510AAJ
23	WPXK	JELICO TN	371.5	PLN	DTVPLN -DTVP0858
23	WPXK	JELICO TN	371.5	APP	BPCDT -20080620AGZ
23	WTWV	MEMPHIS TN	363.4	PLN	DTVPLN -DTVP0859
23	WNAB	NASHVILLE TN	215.9	LIC	BLCDDT -20040712AAO
23	WNAB	NASHVILLE TN	215.9	PLN	DTVPLN -DTVP0860
30	WKOH	OWENSBORO KY	40.9	LIC	BLEDT -20020304ALJ
30	WKOH	OWENSBORO KY	40.9	PLN	DTVPLN -DTVP1106
38	W38BK	EVANSVILLE IN	30.3	LIC	BLTT -19920723IP
38	WFXW	TERRE HAUTE IN	132.7	LIC	BLCT -20031022AAD
23	WTWV	MEMPHIS TN	368.7	APP	USERRECORD-01

Proposal causes no interference

#####

Analysis of Interference to Affected Station 12

Analysis of current record

Channel	Call	City/State	Application Ref. No.
23	W23BV	EVANSVILLE IN	BDFCDTA -20080925AAV

Figure 3

Stations Potentially Affecting This Station

Chan	Call	City/State	Dist(km)	Status	Application	Ref. No.
22	WVUT	VINCENNES IN	68.4	CP	BPEDT	-20080530AAN
22	WVUT	VINCENNES IN	68.4	PLN	DTVPLN	-DTVP0802
22	KBSI	CAPE GIRARDEAU MO	178.4	LIC	BLCDDT	-20041213ABC
22	KBSI	CAPE GIRARDEAU MO	178.4	PLN	DTVPLN	-DTVP0808
23	WQPT-TV	MOLINE IL	427.1	LIC	BLEDT	-20030702AAR
23	WQPT-TV	MOLINE IL	427.1	PLN	DTVPLN	-DTVP0843
23	WIPB	MUNCIE IN	301.5	CP MOD	BMPEDT	-20080620AAH
23	WIPB	MUNCIE IN	301.5	PLN	DTVPLN	-DTVP0844
23	WPXK	JELLICO TN	371.5	LIC	BLCDDT	-20020510AAJ
23	WPXK	JELLICO TN	371.5	PLN	DTVPLN	-DTVP0858
23	WPXK	JELLICO TN	371.5	APP	BPCDDT	-20080620AGZ
23	WTWV	MEMPHIS TN	363.4	PLN	DTVPLN	-DTVP0859
23	WNAB	NASHVILLE TN	215.9	LIC	BLCDDT	-20040712AAO
23	WNAB	NASHVILLE TN	215.9	PLN	DTVPLN	-DTVP0860
23	WTWV	MEMPHIS TN	368.7	APP	USERRECORD-01	

Proposal causes no interference

#####

Analysis of Interference to Affected Station 13

Analysis of current record

Channel	Call	City/State	Application	Ref. No.
23	KOZK	SPRINGFIELD MO	BLEDT	-20030911AAS

Stations Potentially Affecting This Station

Chan	Call	City/State	Dist(km)	Status	Application	Ref. No.
23	WTWV	MEMPHIS TN	310.6	PLN	DTVPLN	-DTVP0859
23	WTWV	MEMPHIS TN	355.0	APP	USERRECORD-01	

Total scenarios = 1

Result key: 1
 Scenario 1 Affected station 13
 Before Analysis

Results for: 23A MO SPRINGFIELD BLEDT 20030911AAS LIC
 HAAT 617.0 m, ATV ERP 100.0 kW

	POPULATION	AREA (sq km)
within Noise Limited Contour	720169	33567.2
not affected by terrain losses	715336	33195.2
lost to NTSC IX	0	0.0
lost to additional IX by ATV	9	4.0
lost to ATV IX only	9	4.0
lost to all IX	9	4.0

Potential Interfering Stations Included in above Scenario 1

23A TN MEMPHIS	DTVPLN	DTVP0859	PLN
----------------	--------	----------	-----

Figure 3

After Analysis

Results for: 23A MO SPRINGFIELD BLEDT 20030911AAS LIC
 HAAT 617.0 m, ATV ERP 100.0 kW

	POPULATION	AREA (sq km)
within Noise Limited Contour	720169	33567.2
not affected by terrain losses	715336	33195.2
lost to NTSC IX	0	0.0
lost to additional IX by ATV	650	44.0
lost to ATV IX only	650	44.0
lost to all IX	650	44.0

Potential Interfering Stations Included in above Scenario 1

23A TN MEMPHIS USERRECORD01 APP

Percent new IX = 0.0896%

Worst case new IX 0.0896% Scenario 1

#####

Analysis of Interference to Affected Station 14

Analysis of current record

Channel	Call	City/State	Application	Ref. No.
23	KOZK	SPRINGFIELD MO	DTVPLN	-DTVP0847

Stations Potentially Affecting This Station

Chan	Call	City/State	Dist(km)	Status	Application	Ref. No.
23	WTWV	MEMPHIS TN	310.6	PLN	DTVPLN	-DTVP0859
23	WTWV	MEMPHIS TN	355.0	APP	USERRECORD-01	

Total scenarios = 1

Result key: 2
 Scenario 1 Affected station 14
 Before Analysis

Results for: 23A MO SPRINGFIELD DTVPLN DTVP0847 PLN
 HAAT 617.0 m, ATV ERP 100.0 kW

	POPULATION	AREA (sq km)
within Noise Limited Contour	720169	33567.2
not affected by terrain losses	715336	33195.2
lost to NTSC IX	0	0.0
lost to additional IX by ATV	9	4.0
lost to ATV IX only	9	4.0
lost to all IX	9	4.0

Potential Interfering Stations Included in above Scenario 1

23A TN MEMPHIS DTVPLN DTVP0859 PLN

Figure 3

After Analysis

Results for: 23A MO SPRINGFIELD DTVPLN DTVP0847 PLN
HAAT 617.0 m, ATV ERP 100.0 kW

	POPULATION	AREA (sq km)
within Noise Limited Contour	720169	33567.2
not affected by terrain losses	715336	33195.2
lost to NTSC IX	0	0.0
lost to additional IX by ATV	650	44.0
lost to ATV IX only	650	44.0
lost to all IX	650	44.0

Potential Interfering Stations Included in above Scenario 1

23A TN MEMPHIS USERRECORD01 APP

Percent new IX = 0.0896%

Worst case new IX 0.0896% Scenario 1

#####

Analysis of Interference to Affected Station 15

Analysis of current record

Channel	Call	City/State	Application	Ref. No.
23	WNAB	NASHVILLE TN	BLCDT	-20040712AAO

Stations Potentially Affecting This Station

Chan	Call	City/State	Dist(km)	Status	Application	Ref. No.
22	WFIQ	FLORENCE AL	207.7	LIC	BLEDT	-20060718ACG
22	WFIQ	FLORENCE AL	207.7	PLN	DTVPLN	-DTVP0788
22	WFIQ	FLORENCE AL	207.7	CP	BPEDT	-20080619AGU
22	WCTE	COOKEVILLE TN	130.5	PLN	DTVPLN	-DTVP0822
22	WCTE	COOKEVILLE TN	130.5	CP	BPEDT	-20080317ADB
22	WCTE	COOKEVILLE TN	130.5	APP	BMPEDT	-20080620ADW
23	WJSP-TV	COLUMBUS GA	424.8	CP MOD	BMPEDT	-20070907ACX
23	WJSP-TV	COLUMBUS GA	424.8	PLN	DTVPLN	-DTVP0838
23	WPXK	JELLICO TN	229.9	LIC	BLCDT	-20020510AAJ
23	WPXK	JELLICO TN	229.9	PLN	DTVPLN	-DTVP0858
23	WPXK	JELLICO TN	229.9	APP	BPCDT	-20080620AGZ
23	WTWV	MEMPHIS TN	318.5	PLN	DTVPLN	-DTVP0859
24	WHIQ	HUNTSVILLE AL	171.4	LIC	BLEDT	-20060927ALU
24	WHIQ	HUNTSVILLE AL	171.4	PLN	DTVPLN	-DTVP0868
23	WTWV	MEMPHIS TN	296.8	APP	USERRECORD-01	

Total scenarios = 18

Result key: 3
Scenario 1 Affected station 15
Before Analysis

Results for: 23A TN NASHVILLE BLCDT 20040712AAO LIC

Figure 3

```

HAAT  367.0 m, ATV ERP  350.0 kW
                                POPULATION  AREA (sq km)
within Noise Limited Contour    1721058    25818.2
not affected by terrain losses  1710514    25294.0
lost to NTSC IX                  0         0.0
lost to additional IX by ATV     1752     100.0
lost to ATV IX only              1752     100.0
lost to all IX                   1752     100.0

Potential Interfering Stations Included in above Scenario    1

22A TN COOKEVILLE      DTVPLN    DTVP0822    PLN
23A TN JELLICO           BLCDT     20020510AAJ  LIC
24A AL HUNTSVILLE      BLEDT     20060927ALU  LIC
23A TN MEMPHIS           DTVPLN    DTVP0859    PLN

After Analysis

Results for: 23A TN NASHVILLE      BLCDT     20040712AAO  LIC
HAAT  367.0 m, ATV ERP  350.0 kW
                                POPULATION  AREA (sq km)
within Noise Limited Contour    1721058    25818.2
not affected by terrain losses  1710514    25294.0
lost to NTSC IX                  0         0.0
lost to additional IX by ATV     5036     344.1
lost to ATV IX only              5036     344.1
lost to all IX                   5036     344.1

Potential Interfering Stations Included in above Scenario    1

22A TN COOKEVILLE      DTVPLN    DTVP0822    PLN
23A TN JELLICO           BLCDT     20020510AAJ  LIC
24A AL HUNTSVILLE      BLEDT     20060927ALU  LIC
23A TN MEMPHIS           USERRECORD01  APP

Percent new IX =      0.1922%

Result key:      4
Scenario         2  Affected station      15
Before Analysis

Results for: 23A TN NASHVILLE      BLCDT     20040712AAO  LIC
HAAT  367.0 m, ATV ERP  350.0 kW
                                POPULATION  AREA (sq km)
within Noise Limited Contour    1721058    25818.2
not affected by terrain losses  1710514    25294.0
lost to NTSC IX                  0         0.0
lost to additional IX by ATV     1752     100.0
lost to ATV IX only              1752     100.0
lost to all IX                   1752     100.0

Potential Interfering Stations Included in above Scenario    2

22A TN COOKEVILLE      DTVPLN    DTVP0822    PLN
23A TN JELLICO           BLCDT     20020510AAJ  LIC
24A AL HUNTSVILLE      DTVPLN    DTVP0868    PLN
23A TN MEMPHIS           DTVPLN    DTVP0859    PLN

```

Figure 3

After Analysis

Results for: 23A TN NASHVILLE BLC DT 20040712AAO LIC
 HAAT 367.0 m, ATV ERP 350.0 kW

	POPULATION	AREA (sq km)
within Noise Limited Contour	1721058	25818.2
not affected by terrain losses	1710514	25294.0
lost to NTSC IX	0	0.0
lost to additional IX by ATV	5036	344.1
lost to ATV IX only	5036	344.1
lost to all IX	5036	344.1

Potential Interfering Stations Included in above Scenario 2

22A TN COOKEVILLE	DTVPLN	DTVP0822	PLN
23A TN JELLICO	BLC DT	20020510AAJ	LIC
24A AL HUNTSVILLE	DTVPLN	DTVP0868	PLN
23A TN MEMPHIS	USERRECORD01		APP

Percent new IX = 0.1922%

Result key: 5
 Scenario 3 Affected station 15
 Before Analysis

Results for: 23A TN NASHVILLE BLC DT 20040712AAO LIC
 HAAT 367.0 m, ATV ERP 350.0 kW

	POPULATION	AREA (sq km)
within Noise Limited Contour	1721058	25818.2
not affected by terrain losses	1710514	25294.0
lost to NTSC IX	0	0.0
lost to additional IX by ATV	1752	100.0
lost to ATV IX only	1752	100.0
lost to all IX	1752	100.0

Potential Interfering Stations Included in above Scenario 3

22A TN COOKEVILLE	DTVPLN	DTVP0822	PLN
23A TN JELLICO	DTVPLN	DTVP0858	PLN
24A AL HUNTSVILLE	BLEDT	20060927ALU	LIC
23A TN MEMPHIS	DTVPLN	DTVP0859	PLN

After Analysis

Results for: 23A TN NASHVILLE BLC DT 20040712AAO LIC
 HAAT 367.0 m, ATV ERP 350.0 kW

	POPULATION	AREA (sq km)
within Noise Limited Contour	1721058	25818.2
not affected by terrain losses	1710514	25294.0
lost to NTSC IX	0	0.0
lost to additional IX by ATV	5036	344.1
lost to ATV IX only	5036	344.1
lost to all IX	5036	344.1

Potential Interfering Stations Included in above Scenario 3

Figure 3

22A TN COOKEVILLE	DTVPLN	DTVP0822	PLN
23A TN JELLICO	DTVPLN	DTVP0858	PLN
24A AL HUNTSVILLE	BLEDT	20060927ALU	LIC
23A TN MEMPHIS	USERRECORD01		APP

Percent new IX = 0.1922%

Result key: 6
 Scenario 4 Affected station 15
 Before Analysis

Results for: 23A TN NASHVILLE BLCDT 20040712AAO LIC
 HAAT 367.0 m, ATV ERP 350.0 kW

	POPULATION	AREA (sq km)
within Noise Limited Contour	1721058	25818.2
not affected by terrain losses	1710514	25294.0
lost to NTSC IX	0	0.0
lost to additional IX by ATV	1752	100.0
lost to ATV IX only	1752	100.0
lost to all IX	1752	100.0

Potential Interfering Stations Included in above Scenario 4

22A TN COOKEVILLE	DTVPLN	DTVP0822	PLN
23A TN JELLICO	DTVPLN	DTVP0858	PLN
24A AL HUNTSVILLE	DTVPLN	DTVP0868	PLN
23A TN MEMPHIS	DTVPLN	DTVP0859	PLN

After Analysis

Results for: 23A TN NASHVILLE BLCDT 20040712AAO LIC
 HAAT 367.0 m, ATV ERP 350.0 kW

	POPULATION	AREA (sq km)
within Noise Limited Contour	1721058	25818.2
not affected by terrain losses	1710514	25294.0
lost to NTSC IX	0	0.0
lost to additional IX by ATV	5036	344.1
lost to ATV IX only	5036	344.1
lost to all IX	5036	344.1

Potential Interfering Stations Included in above Scenario 4

22A TN COOKEVILLE	DTVPLN	DTVP0822	PLN
23A TN JELLICO	DTVPLN	DTVP0858	PLN
24A AL HUNTSVILLE	DTVPLN	DTVP0868	PLN
23A TN MEMPHIS	USERRECORD01		APP

Percent new IX = 0.1922%

Result key: 7
 Scenario 5 Affected station 15
 Before Analysis

Results for: 23A TN NASHVILLE BLCDT 20040712AAO LIC
 HAAT 367.0 m, ATV ERP 350.0 kW

	POPULATION	AREA (sq km)
within Noise Limited Contour	1721058	25818.2

Figure 3

not affected by terrain losses	1710514	25294.0
lost to NTSC IX	0	0.0
lost to additional IX by ATV	1752	100.0
lost to ATV IX only	1752	100.0
lost to all IX	1752	100.0

Potential Interfering Stations Included in above Scenario 5

22A TN COOKEVILLE	BPEDT	20080317ADB	CP
23A TN JELLICO	BLCDT	20020510AAJ	LIC
24A AL HUNTSVILLE	BLEDT	20060927ALU	LIC
23A TN MEMPHIS	DTVPLN	DTVP0859	PLN

After Analysis

Results for: 23A TN NASHVILLE BLCDT 20040712AAO LIC
HAAT 367.0 m, ATV ERP 350.0 kW

	POPULATION	AREA (sq km)
within Noise Limited Contour	1721058	25818.2
not affected by terrain losses	1710514	25294.0
lost to NTSC IX	0	0.0
lost to additional IX by ATV	5036	344.1
lost to ATV IX only	5036	344.1
lost to all IX	5036	344.1

Potential Interfering Stations Included in above Scenario 5

22A TN COOKEVILLE	BPEDT	20080317ADB	CP
23A TN JELLICO	BLCDT	20020510AAJ	LIC
24A AL HUNTSVILLE	BLEDT	20060927ALU	LIC
23A TN MEMPHIS	USERRECORD01		APP

Percent new IX = 0.1922%

Result key: 8
Scenario 6 Affected station 15
Before Analysis

Results for: 23A TN NASHVILLE BLCDT 20040712AAO LIC
HAAT 367.0 m, ATV ERP 350.0 kW

	POPULATION	AREA (sq km)
within Noise Limited Contour	1721058	25818.2
not affected by terrain losses	1710514	25294.0
lost to NTSC IX	0	0.0
lost to additional IX by ATV	1752	100.0
lost to ATV IX only	1752	100.0
lost to all IX	1752	100.0

Potential Interfering Stations Included in above Scenario 6

22A TN COOKEVILLE	BPEDT	20080317ADB	CP
23A TN JELLICO	BLCDT	20020510AAJ	LIC
24A AL HUNTSVILLE	DTVPLN	DTVP0868	PLN
23A TN MEMPHIS	DTVPLN	DTVP0859	PLN

After Analysis

Figure 3

Results for: 23A TN NASHVILLE BLCDT 20040712AAO LIC
 HAAT 367.0 m, ATV ERP 350.0 kW

	POPULATION	AREA (sq km)
within Noise Limited Contour	1721058	25818.2
not affected by terrain losses	1710514	25294.0
lost to NTSC IX	0	0.0
lost to additional IX by ATV	5036	344.1
lost to ATV IX only	5036	344.1
lost to all IX	5036	344.1

Potential Interfering Stations Included in above Scenario 6

22A TN COOKEVILLE	BPEDT	20080317ADB	CP
23A TN JELLICO	BLCDT	20020510AAJ	LIC
24A AL HUNTSVILLE	DTVPLN	DTVP0868	PLN
23A TN MEMPHIS	USERRECORD01		APP

Percent new IX = 0.1922%

Result key: 9
 Scenario 7 Affected station 15
 Before Analysis

Results for: 23A TN NASHVILLE BLCDT 20040712AAO LIC
 HAAT 367.0 m, ATV ERP 350.0 kW

	POPULATION	AREA (sq km)
within Noise Limited Contour	1721058	25818.2
not affected by terrain losses	1710514	25294.0
lost to NTSC IX	0	0.0
lost to additional IX by ATV	1752	100.0
lost to ATV IX only	1752	100.0
lost to all IX	1752	100.0

Potential Interfering Stations Included in above Scenario 7

22A TN COOKEVILLE	BPEDT	20080317ADB	CP
23A TN JELLICO	DTVPLN	DTVP0858	PLN
24A AL HUNTSVILLE	BLEDT	20060927ALU	LIC
23A TN MEMPHIS	DTVPLN	DTVP0859	PLN

After Analysis

Results for: 23A TN NASHVILLE BLCDT 20040712AAO LIC
 HAAT 367.0 m, ATV ERP 350.0 kW

	POPULATION	AREA (sq km)
within Noise Limited Contour	1721058	25818.2
not affected by terrain losses	1710514	25294.0
lost to NTSC IX	0	0.0
lost to additional IX by ATV	5036	344.1
lost to ATV IX only	5036	344.1
lost to all IX	5036	344.1

Potential Interfering Stations Included in above Scenario 7

22A TN COOKEVILLE	BPEDT	20080317ADB	CP
23A TN JELLICO	DTVPLN	DTVP0858	PLN
24A AL HUNTSVILLE	BLEDT	20060927ALU	LIC

Figure 3

```

23A TN MEMPHIS                USERRECORD01                APP

Percent new IX =      0.1922%

Result key:      10
Scenario        8  Affected station      15
Before Analysis

Results for: 23A TN NASHVILLE                BLCDT      20040712AAO  LIC
  HAAT  367.0 m, ATV ERP  350.0 kW
                POPULATION      AREA (sq km)
  within Noise Limited Contour      1721058      25818.2
  not affected by terrain losses      1710514      25294.0
  lost to NTSC IX                      0          0.0
  lost to additional IX by ATV          1752       100.0
  lost to ATV IX only                  1752       100.0
  lost to all IX                      1752       100.0

Potential Interfering Stations Included in above Scenario      8

22A TN COOKEVILLE            BPEDT      20080317ADB  CP
23A TN JELLICO                 DTVPLN      DTVP0858    PLN
24A AL HUNTSVILLE            DTVPLN      DTVP0868    PLN
23A TN MEMPHIS                 DTVPLN      DTVP0859    PLN

After Analysis

Results for: 23A TN NASHVILLE                BLCDT      20040712AAO  LIC
  HAAT  367.0 m, ATV ERP  350.0 kW
                POPULATION      AREA (sq km)
  within Noise Limited Contour      1721058      25818.2
  not affected by terrain losses      1710514      25294.0
  lost to NTSC IX                      0          0.0
  lost to additional IX by ATV          5036       344.1
  lost to ATV IX only                  5036       344.1
  lost to all IX                      5036       344.1

Potential Interfering Stations Included in above Scenario      8

22A TN COOKEVILLE            BPEDT      20080317ADB  CP
23A TN JELLICO                 DTVPLN      DTVP0858    PLN
24A AL HUNTSVILLE            DTVPLN      DTVP0868    PLN
23A TN MEMPHIS                 USERRECORD01  APP

Percent new IX =      0.1922%

Result key:      11
Scenario        9  Affected station      15
Before Analysis

Results for: 23A TN NASHVILLE                BLCDT      20040712AAO  LIC
  HAAT  367.0 m, ATV ERP  350.0 kW
                POPULATION      AREA (sq km)
  within Noise Limited Contour      1721058      25818.2
  not affected by terrain losses      1710514      25294.0
  lost to NTSC IX                      0          0.0
  lost to additional IX by ATV          10292      440.2

```

Figure 3

lost to ATV IX only	10292	440.2
lost to all IX	10292	440.2

Potential Interfering Stations Included in above Scenario 9

22A TN COOKEVILLE	DTVPLN	DTVP0822	PLN
23A TN JELLICO	BPCDT	20080620AGZ	APP
24A AL HUNTSVILLE	BLEDT	20060927ALU	LIC
23A TN MEMPHIS	DTVPLN	DTVP0859	PLN

After Analysis

Results for: 23A TN NASHVILLE BLCDT 20040712AAO LIC

HAAT 367.0 m, ATV ERP 350.0 kW

	POPULATION	AREA (sq km)
within Noise Limited Contour	1721058	25818.2
not affected by terrain losses	1710514	25294.0
lost to NTSC IX	0	0.0
lost to additional IX by ATV	13185	668.3
lost to ATV IX only	13185	668.3
lost to all IX	13185	668.3

Potential Interfering Stations Included in above Scenario 9

22A TN COOKEVILLE	DTVPLN	DTVP0822	PLN
23A TN JELLICO	BPCDT	20080620AGZ	APP
24A AL HUNTSVILLE	BLEDT	20060927ALU	LIC
23A TN MEMPHIS	USERRECORD01		APP

Percent new IX = 0.1702%

Result key: 12

Scenario 10 Affected station 15

Before Analysis

Results for: 23A TN NASHVILLE BLCDT 20040712AAO LIC

HAAT 367.0 m, ATV ERP 350.0 kW

	POPULATION	AREA (sq km)
within Noise Limited Contour	1721058	25818.2
not affected by terrain losses	1710514	25294.0
lost to NTSC IX	0	0.0
lost to additional IX by ATV	10292	440.2
lost to ATV IX only	10292	440.2
lost to all IX	10292	440.2

Potential Interfering Stations Included in above Scenario 10

22A TN COOKEVILLE	DTVPLN	DTVP0822	PLN
23A TN JELLICO	BPCDT	20080620AGZ	APP
24A AL HUNTSVILLE	DTVPLN	DTVP0868	PLN
23A TN MEMPHIS	DTVPLN	DTVP0859	PLN

After Analysis

Results for: 23A TN NASHVILLE BLCDT 20040712AAO LIC

HAAT 367.0 m, ATV ERP 350.0 kW

	POPULATION	AREA (sq km)
--	------------	--------------

Figure 3

within Noise Limited Contour	1721058	25818.2
not affected by terrain losses	1710514	25294.0
lost to NTSC IX	0	0.0
lost to additional IX by ATV	13185	668.3
lost to ATV IX only	13185	668.3
lost to all IX	13185	668.3

Potential Interfering Stations Included in above Scenario 10

22A TN COOKEVILLE	DTVPLN	DTVP0822	PLN
23A TN JELLICO	BPCDT	20080620AGZ	APP
24A AL HUNTSVILLE	DTVPLN	DTVP0868	PLN
23A TN MEMPHIS	USERRECORD01		APP

Percent new IX = 0.1702%

Result key: 13

Scenario 11 Affected station 15

Before Analysis

Results for: 23A TN NASHVILLE BLCDT 20040712AAO LIC

HAAT 367.0 m, ATV ERP 350.0 kW

	POPULATION	AREA (sq km)
within Noise Limited Contour	1721058	25818.2
not affected by terrain losses	1710514	25294.0
lost to NTSC IX	0	0.0
lost to additional IX by ATV	10292	440.2
lost to ATV IX only	10292	440.2
lost to all IX	10292	440.2

Potential Interfering Stations Included in above Scenario 11

22A TN COOKEVILLE	BPEDT	20080317ADB	CP
23A TN JELLICO	BPCDT	20080620AGZ	APP
24A AL HUNTSVILLE	BLEDT	20060927ALU	LIC
23A TN MEMPHIS	DTVPLN	DTVP0859	PLN

After Analysis

Results for: 23A TN NASHVILLE BLCDT 20040712AAO LIC

HAAT 367.0 m, ATV ERP 350.0 kW

	POPULATION	AREA (sq km)
within Noise Limited Contour	1721058	25818.2
not affected by terrain losses	1710514	25294.0
lost to NTSC IX	0	0.0
lost to additional IX by ATV	13185	668.3
lost to ATV IX only	13185	668.3
lost to all IX	13185	668.3

Potential Interfering Stations Included in above Scenario 11

22A TN COOKEVILLE	BPEDT	20080317ADB	CP
23A TN JELLICO	BPCDT	20080620AGZ	APP
24A AL HUNTSVILLE	BLEDT	20060927ALU	LIC
23A TN MEMPHIS	USERRECORD01		APP

Percent new IX = 0.1702%

Figure 3

Result key: 14
 Scenario 12 Affected station 15
 Before Analysis

Results for: 23A TN NASHVILLE BLC DT 20040712AAO LIC
 HAAT 367.0 m, ATV ERP 350.0 kW

	POPULATION	AREA (sq km)
within Noise Limited Contour	1721058	25818.2
not affected by terrain losses	1710514	25294.0
lost to NTSC IX	0	0.0
lost to additional IX by ATV	10292	440.2
lost to ATV IX only	10292	440.2
lost to all IX	10292	440.2

Potential Interfering Stations Included in above Scenario 12

22A TN COOKEVILLE	BPEDT	20080317ADB	CP
23A TN JELLICO	BPCDT	20080620AGZ	APP
24A AL HUNTSVILLE	DTVPLN	DTVP0868	PLN
23A TN MEMPHIS	DTVPLN	DTVP0859	PLN

After Analysis

Results for: 23A TN NASHVILLE BLC DT 20040712AAO LIC
 HAAT 367.0 m, ATV ERP 350.0 kW

	POPULATION	AREA (sq km)
within Noise Limited Contour	1721058	25818.2
not affected by terrain losses	1710514	25294.0
lost to NTSC IX	0	0.0
lost to additional IX by ATV	13185	668.3
lost to ATV IX only	13185	668.3
lost to all IX	13185	668.3

Potential Interfering Stations Included in above Scenario 12

22A TN COOKEVILLE	BPEDT	20080317ADB	CP
23A TN JELLICO	BPCDT	20080620AGZ	APP
24A AL HUNTSVILLE	DTVPLN	DTVP0868	PLN
23A TN MEMPHIS	USERRECORD01		APP

Percent new IX = 0.1702%

Result key: 15
 Scenario 13 Affected station 15
 Before Analysis

Results for: 23A TN NASHVILLE BLC DT 20040712AAO LIC
 HAAT 367.0 m, ATV ERP 350.0 kW

	POPULATION	AREA (sq km)
within Noise Limited Contour	1721058	25818.2
not affected by terrain losses	1710514	25294.0
lost to NTSC IX	0	0.0
lost to additional IX by ATV	2073	120.0
lost to ATV IX only	2073	120.0
lost to all IX	2073	120.0

Figure 3

Potential Interfering Stations Included in above Scenario 13

22A TN COOKEVILLE	BMPEDT	20080620ADW	APP
23A TN JELLICO	BLCDDT	20020510AAJ	LIC
24A AL HUNTSVILLE	BLEDT	20060927ALU	LIC
23A TN MEMPHIS	DTVPLN	DTVP0859	PLN

After Analysis

Results for: 23A TN NASHVILLE BLCDDT 20040712AAO LIC
 HAAT 367.0 m, ATV ERP 350.0 kW

	POPULATION	AREA (sq km)
within Noise Limited Contour	1721058	25818.2
not affected by terrain losses	1710514	25294.0
lost to NTSC IX	0	0.0
lost to additional IX by ATV	5357	364.1
lost to ATV IX only	5357	364.1
lost to all IX	5357	364.1

Potential Interfering Stations Included in above Scenario 13

22A TN COOKEVILLE	BMPEDT	20080620ADW	APP
23A TN JELLICO	BLCDDT	20020510AAJ	LIC
24A AL HUNTSVILLE	BLEDT	20060927ALU	LIC
23A TN MEMPHIS	USERRECORD01		APP

Percent new IX = 0.1922%

Result key: 16
 Scenario 14 Affected station 15
 Before Analysis

Results for: 23A TN NASHVILLE BLCDDT 20040712AAO LIC
 HAAT 367.0 m, ATV ERP 350.0 kW

	POPULATION	AREA (sq km)
within Noise Limited Contour	1721058	25818.2
not affected by terrain losses	1710514	25294.0
lost to NTSC IX	0	0.0
lost to additional IX by ATV	2073	120.0
lost to ATV IX only	2073	120.0
lost to all IX	2073	120.0

Potential Interfering Stations Included in above Scenario 14

22A TN COOKEVILLE	BMPEDT	20080620ADW	APP
23A TN JELLICO	BLCDDT	20020510AAJ	LIC
24A AL HUNTSVILLE	DTVPLN	DTVP0868	PLN
23A TN MEMPHIS	DTVPLN	DTVP0859	PLN

After Analysis

Results for: 23A TN NASHVILLE BLCDDT 20040712AAO LIC
 HAAT 367.0 m, ATV ERP 350.0 kW

	POPULATION	AREA (sq km)
within Noise Limited Contour	1721058	25818.2
not affected by terrain losses	1710514	25294.0
lost to NTSC IX	0	0.0

Figure 3

lost to additional IX by ATV	5357	364.1
lost to ATV IX only	5357	364.1
lost to all IX	5357	364.1

Potential Interfering Stations Included in above Scenario 14

22A TN COOKEVILLE	BMPEDT	20080620ADW	APP
23A TN JELLICO	BLCDT	20020510AAJ	LIC
24A AL HUNTSVILLE	DTVPLN	DTVP0868	PLN
23A TN MEMPHIS	USERRECORD01		APP

Percent new IX = 0.1922%

Result key: 17

Scenario 15 Affected station 15

Before Analysis

Results for: 23A TN NASHVILLE BLCDT 20040712AAO LIC

HAAT 367.0 m, ATV ERP 350.0 kW

	POPULATION	AREA (sq km)
within Noise Limited Contour	1721058	25818.2
not affected by terrain losses	1710514	25294.0
lost to NTSC IX	0	0.0
lost to additional IX by ATV	2073	120.0
lost to ATV IX only	2073	120.0
lost to all IX	2073	120.0

Potential Interfering Stations Included in above Scenario 15

22A TN COOKEVILLE	BMPEDT	20080620ADW	APP
23A TN JELLICO	DTVPLN	DTVP0858	PLN
24A AL HUNTSVILLE	BLEDT	20060927ALU	LIC
23A TN MEMPHIS	DTVPLN	DTVP0859	PLN

After Analysis

Results for: 23A TN NASHVILLE BLCDT 20040712AAO LIC

HAAT 367.0 m, ATV ERP 350.0 kW

	POPULATION	AREA (sq km)
within Noise Limited Contour	1721058	25818.2
not affected by terrain losses	1710514	25294.0
lost to NTSC IX	0	0.0
lost to additional IX by ATV	5357	364.1
lost to ATV IX only	5357	364.1
lost to all IX	5357	364.1

Potential Interfering Stations Included in above Scenario 15

22A TN COOKEVILLE	BMPEDT	20080620ADW	APP
23A TN JELLICO	DTVPLN	DTVP0858	PLN
24A AL HUNTSVILLE	BLEDT	20060927ALU	LIC
23A TN MEMPHIS	USERRECORD01		APP

Percent new IX = 0.1922%

Result key: 18

Scenario 16 Affected station 15

Figure 3

Before Analysis

Results for: 23A TN NASHVILLE BLCDT 20040712AAO LIC
 HAAT 367.0 m, ATV ERP 350.0 kW

	POPULATION	AREA (sq km)
within Noise Limited Contour	1721058	25818.2
not affected by terrain losses	1710514	25294.0
lost to NTSC IX	0	0.0
lost to additional IX by ATV	2073	120.0
lost to ATV IX only	2073	120.0
lost to all IX	2073	120.0

Potential Interfering Stations Included in above Scenario 16

22A TN COOKEVILLE	BMPEDT	20080620ADW	APP
23A TN JELLICO	DTVPLN	DTVP0858	PLN
24A AL HUNTSVILLE	DTVPLN	DTVP0868	PLN
23A TN MEMPHIS	DTVPLN	DTVP0859	PLN

After Analysis

Results for: 23A TN NASHVILLE BLCDT 20040712AAO LIC
 HAAT 367.0 m, ATV ERP 350.0 kW

	POPULATION	AREA (sq km)
within Noise Limited Contour	1721058	25818.2
not affected by terrain losses	1710514	25294.0
lost to NTSC IX	0	0.0
lost to additional IX by ATV	5357	364.1
lost to ATV IX only	5357	364.1
lost to all IX	5357	364.1

Potential Interfering Stations Included in above Scenario 16

22A TN COOKEVILLE	BMPEDT	20080620ADW	APP
23A TN JELLICO	DTVPLN	DTVP0858	PLN
24A AL HUNTSVILLE	DTVPLN	DTVP0868	PLN
23A TN MEMPHIS	USERRECORD01		APP

Percent new IX = 0.1922%

Result key: 19
 Scenario 17 Affected station 15
 Before Analysis

Results for: 23A TN NASHVILLE BLCDT 20040712AAO LIC
 HAAT 367.0 m, ATV ERP 350.0 kW

	POPULATION	AREA (sq km)
within Noise Limited Contour	1721058	25818.2
not affected by terrain losses	1710514	25294.0
lost to NTSC IX	0	0.0
lost to additional IX by ATV	10366	452.2
lost to ATV IX only	10366	452.2
lost to all IX	10366	452.2

Potential Interfering Stations Included in above Scenario 17

22A TN COOKEVILLE	BMPEDT	20080620ADW	APP
-------------------	--------	-------------	-----

Figure 3

23A TN JELLICO	BPCDT	20080620AGZ	APP
24A AL HUNTSVILLE	BLEDT	20060927ALU	LIC
23A TN MEMPHIS	DTVPLN	DTVP0859	PLN

After Analysis

Results for: 23A TN NASHVILLE BLCDT 20040712AAO LIC

HAAT 367.0 m, ATV ERP 350.0 kW

	POPULATION	AREA (sq km)
within Noise Limited Contour	1721058	25818.2
not affected by terrain losses	1710514	25294.0
lost to NTSC IX	0	0.0
lost to additional IX by ATV	13259	680.3
lost to ATV IX only	13259	680.3
lost to all IX	13259	680.3

Potential Interfering Stations Included in above Scenario 17

22A TN COOKEVILLE	BMPEDT	20080620ADW	APP
23A TN JELLICO	BPCDT	20080620AGZ	APP
24A AL HUNTSVILLE	BLEDT	20060927ALU	LIC
23A TN MEMPHIS	USERRECORD01		APP

Percent new IX = 0.1702%

Result key: 20

Scenario 18 Affected station 15

Before Analysis

Results for: 23A TN NASHVILLE BLCDT 20040712AAO LIC

HAAT 367.0 m, ATV ERP 350.0 kW

	POPULATION	AREA (sq km)
within Noise Limited Contour	1721058	25818.2
not affected by terrain losses	1710514	25294.0
lost to NTSC IX	0	0.0
lost to additional IX by ATV	10366	452.2
lost to ATV IX only	10366	452.2
lost to all IX	10366	452.2

Potential Interfering Stations Included in above Scenario 18

22A TN COOKEVILLE	BMPEDT	20080620ADW	APP
23A TN JELLICO	BPCDT	20080620AGZ	APP
24A AL HUNTSVILLE	DTVPLN	DTVP0868	PLN
23A TN MEMPHIS	DTVPLN	DTVP0859	PLN

After Analysis

Results for: 23A TN NASHVILLE BLCDT 20040712AAO LIC

HAAT 367.0 m, ATV ERP 350.0 kW

	POPULATION	AREA (sq km)
within Noise Limited Contour	1721058	25818.2
not affected by terrain losses	1710514	25294.0
lost to NTSC IX	0	0.0
lost to additional IX by ATV	13259	680.3
lost to ATV IX only	13259	680.3
lost to all IX	13259	680.3

Figure 3

```

Potential Interfering Stations Included in above Scenario      18

22A TN COOKEVILLE      BMPEDT      20080620ADW  APP
23A TN JELLICO          BPCDT      20080620AGZ  APP
24A AL HUNTSVILLE      DTVPLN      DTVP0868    PLN
23A TN MEMPHIS          USERRECORD01  APP

Percent new IX =      0.1702%

Worst case new IX      0.1922% Scenario      13

#####

Analysis of Interference to Affected Station  16

Analysis of current record
Channel      Call      City/State      Application Ref. No.
    23      WNAB      NASHVILLE TN      DTVPLN      -DTVP0860

Stations Potentially Affecting This Station

Chan  Call      City/State      Dist(km) Status  Application Ref. No.
  22  WFIQ      FLORENCE AL      207.7  LIC    BLEDT      -20060718ACG
  22  WFIQ      FLORENCE AL      207.7  PLN    DTVPLN     -DTVP0788
  22  WFIQ      FLORENCE AL      207.7  CP     BPEDT      -20080619AGU
  22  WCTE      COOKEVILLE TN    130.5  PLN    DTVPLN     -DTVP0822
  22  WCTE      COOKEVILLE TN    130.5  CP     BPEDT      -20080317ADB
  22  WCTE      COOKEVILLE TN    130.5  APP    BMPEDT     -20080620ADW
  23  WJSP-TV   COLUMBUS GA      424.8  CP MOD BMPEDT     -20070907ACX
  23  WJSP-TV   COLUMBUS GA      424.8  PLN    DTVPLN     -DTVP0838
  23  WPXK      JELLICO TN       229.9  LIC    BLCDT      -20020510AAJ
  23  WPXK      JELLICO TN       229.9  PLN    DTVPLN     -DTVP0858
  23  WPXK      JELLICO TN       229.9  APP    BPCDT      -20080620AGZ
  23  WTWV      MEMPHIS TN       318.5  PLN    DTVPLN     -DTVP0859
  24  WHIQ      HUNTSVILLE AL    171.4  LIC    BLEDT      -20060927ALU
  24  WHIQ      HUNTSVILLE AL    171.4  PLN    DTVPLN     -DTVP0868
  23  WTWV      MEMPHIS TN       296.8  APP    USERRECORD-01

Total scenarios =      18

Result key:      21
Scenario      1  Affected station      16
Before Analysis

Results for: 23A TN NASHVILLE      DTVPLN      DTVP0860      PLN
      HAAT 367.0 m, ATV ERP 350.0 kW
              POPULATION      AREA (sq km)
within Noise Limited Contour      1721058      25818.2
not affected by terrain losses      1710514      25294.0
lost to NTSC IX      0      0.0
lost to additional IX by ATV      1752      100.0
lost to ATV IX only      1752      100.0
lost to all IX      1752      100.0

```

Figure 3

```

Potential Interfering Stations Included in above Scenario      1

22A TN COOKEVILLE      DTVPLN      DTVP0822      PLN
23A TN JELLICO           BLCDT      20020510AAJ  LIC
24A AL HUNTSVILLE     BLEDT      20060927ALU  LIC
23A TN MEMPHIS          DTVPLN      DTVP0859      PLN

After Analysis

Results for: 23A TN NASHVILLE      DTVPLN      DTVP0860      PLN
  HAAT  367.0 m, ATV ERP  350.0 kW
                POPULATION      AREA (sq km)
  within Noise Limited Contour      1721058      25818.2
  not affected by terrain losses      1710514      25294.0
  lost to NTSC IX                    0          0.0
  lost to additional IX by ATV        5036      344.1
  lost to ATV IX only                 5036      344.1
  lost to all IX                     5036      344.1

Potential Interfering Stations Included in above Scenario      1

22A TN COOKEVILLE      DTVPLN      DTVP0822      PLN
23A TN JELLICO           BLCDT      20020510AAJ  LIC
24A AL HUNTSVILLE     BLEDT      20060927ALU  LIC
23A TN MEMPHIS          USERRECORD01      APP

Percent new IX =      0.1922%

Result key:      22
Scenario      2  Affected station      16
Before Analysis

Results for: 23A TN NASHVILLE      DTVPLN      DTVP0860      PLN
  HAAT  367.0 m, ATV ERP  350.0 kW
                POPULATION      AREA (sq km)
  within Noise Limited Contour      1721058      25818.2
  not affected by terrain losses      1710514      25294.0
  lost to NTSC IX                    0          0.0
  lost to additional IX by ATV        1752      100.0
  lost to ATV IX only                 1752      100.0
  lost to all IX                     1752      100.0

Potential Interfering Stations Included in above Scenario      2

22A TN COOKEVILLE      DTVPLN      DTVP0822      PLN
23A TN JELLICO           BLCDT      20020510AAJ  LIC
24A AL HUNTSVILLE     DTVPLN      DTVP0868      PLN
23A TN MEMPHIS          DTVPLN      DTVP0859      PLN

After Analysis

Results for: 23A TN NASHVILLE      DTVPLN      DTVP0860      PLN
  HAAT  367.0 m, ATV ERP  350.0 kW
                POPULATION      AREA (sq km)
  within Noise Limited Contour      1721058      25818.2
  not affected by terrain losses      1710514      25294.0

```

Figure 3

lost to NTSC IX	0	0.0
lost to additional IX by ATV	5036	344.1
lost to ATV IX only	5036	344.1
lost to all IX	5036	344.1

Potential Interfering Stations Included in above Scenario 2

22A TN COOKEVILLE	DTVPLN	DTVP0822	PLN
23A TN JELLICO	BLCDT	20020510AAJ	LIC
24A AL HUNTSVILLE	DTVPLN	DTVP0868	PLN
23A TN MEMPHIS	USERRECORD01		APP

Percent new IX = 0.1922%

Result key: 23

Scenario 3 Affected station 16

Before Analysis

Results for: 23A TN NASHVILLE DTVPLN DTVP0860 PLN

HAAT 367.0 m, ATV ERP 350.0 kW

	POPULATION	AREA (sq km)
within Noise Limited Contour	1721058	25818.2
not affected by terrain losses	1710514	25294.0
lost to NTSC IX	0	0.0
lost to additional IX by ATV	1752	100.0
lost to ATV IX only	1752	100.0
lost to all IX	1752	100.0

Potential Interfering Stations Included in above Scenario 3

22A TN COOKEVILLE	DTVPLN	DTVP0822	PLN
23A TN JELLICO	DTVPLN	DTVP0858	PLN
24A AL HUNTSVILLE	BLEDT	20060927ALU	LIC
23A TN MEMPHIS	DTVPLN	DTVP0859	PLN

After Analysis

Results for: 23A TN NASHVILLE DTVPLN DTVP0860 PLN

HAAT 367.0 m, ATV ERP 350.0 kW

	POPULATION	AREA (sq km)
within Noise Limited Contour	1721058	25818.2
not affected by terrain losses	1710514	25294.0
lost to NTSC IX	0	0.0
lost to additional IX by ATV	5036	344.1
lost to ATV IX only	5036	344.1
lost to all IX	5036	344.1

Potential Interfering Stations Included in above Scenario 3

22A TN COOKEVILLE	DTVPLN	DTVP0822	PLN
23A TN JELLICO	DTVPLN	DTVP0858	PLN
24A AL HUNTSVILLE	BLEDT	20060927ALU	LIC
23A TN MEMPHIS	USERRECORD01		APP

Percent new IX = 0.1922%

Result key: 24

Figure 3

Scenario 4 Affected station 16
Before Analysis

Results for: 23A TN NASHVILLE DTVPLN DTVP0860 PLN
HAAT 367.0 m, ATV ERP 350.0 kW

	POPULATION	AREA (sq km)
within Noise Limited Contour	1721058	25818.2
not affected by terrain losses	1710514	25294.0
lost to NTSC IX	0	0.0
lost to additional IX by ATV	1752	100.0
lost to ATV IX only	1752	100.0
lost to all IX	1752	100.0

Potential Interfering Stations Included in above Scenario 4

22A TN COOKEVILLE	DTVPLN	DTVP0822	PLN
23A TN JELLICO	DTVPLN	DTVP0858	PLN
24A AL HUNTSVILLE	DTVPLN	DTVP0868	PLN
23A TN MEMPHIS	DTVPLN	DTVP0859	PLN

After Analysis

Results for: 23A TN NASHVILLE DTVPLN DTVP0860 PLN
HAAT 367.0 m, ATV ERP 350.0 kW

	POPULATION	AREA (sq km)
within Noise Limited Contour	1721058	25818.2
not affected by terrain losses	1710514	25294.0
lost to NTSC IX	0	0.0
lost to additional IX by ATV	5036	344.1
lost to ATV IX only	5036	344.1
lost to all IX	5036	344.1

Potential Interfering Stations Included in above Scenario 4

22A TN COOKEVILLE	DTVPLN	DTVP0822	PLN
23A TN JELLICO	DTVPLN	DTVP0858	PLN
24A AL HUNTSVILLE	DTVPLN	DTVP0868	PLN
23A TN MEMPHIS	USERRECORD01		APP

Percent new IX = 0.1922%

Result key: 25

Scenario 5 Affected station 16
Before Analysis

Results for: 23A TN NASHVILLE DTVPLN DTVP0860 PLN
HAAT 367.0 m, ATV ERP 350.0 kW

	POPULATION	AREA (sq km)
within Noise Limited Contour	1721058	25818.2
not affected by terrain losses	1710514	25294.0
lost to NTSC IX	0	0.0
lost to additional IX by ATV	1752	100.0
lost to ATV IX only	1752	100.0
lost to all IX	1752	100.0

Potential Interfering Stations Included in above Scenario 5

Figure 3

22A TN COOKEVILLE	BPEDT	20080317ADB	CP
23A TN JELLICO	BLCDT	20020510AAJ	LIC
24A AL HUNTSVILLE	BLEDT	20060927ALU	LIC
23A TN MEMPHIS	DTVPLN	DTVP0859	PLN

After Analysis

Results for: 23A TN NASHVILLE DTVPLN DTVP0860 PLN
 HAAT 367.0 m, ATV ERP 350.0 kW

	POPULATION	AREA (sq km)
within Noise Limited Contour	1721058	25818.2
not affected by terrain losses	1710514	25294.0
lost to NTSC IX	0	0.0
lost to additional IX by ATV	5036	344.1
lost to ATV IX only	5036	344.1
lost to all IX	5036	344.1

Potential Interfering Stations Included in above Scenario 5

22A TN COOKEVILLE	BPEDT	20080317ADB	CP
23A TN JELLICO	BLCDT	20020510AAJ	LIC
24A AL HUNTSVILLE	BLEDT	20060927ALU	LIC
23A TN MEMPHIS	USERRECORD01		APP

Percent new IX = 0.1922%

Result key: 26
 Scenario 6 Affected station 16
 Before Analysis

Results for: 23A TN NASHVILLE DTVPLN DTVP0860 PLN
 HAAT 367.0 m, ATV ERP 350.0 kW

	POPULATION	AREA (sq km)
within Noise Limited Contour	1721058	25818.2
not affected by terrain losses	1710514	25294.0
lost to NTSC IX	0	0.0
lost to additional IX by ATV	1752	100.0
lost to ATV IX only	1752	100.0
lost to all IX	1752	100.0

Potential Interfering Stations Included in above Scenario 6

22A TN COOKEVILLE	BPEDT	20080317ADB	CP
23A TN JELLICO	BLCDT	20020510AAJ	LIC
24A AL HUNTSVILLE	DTVPLN	DTVP0868	PLN
23A TN MEMPHIS	DTVPLN	DTVP0859	PLN

After Analysis

Results for: 23A TN NASHVILLE DTVPLN DTVP0860 PLN
 HAAT 367.0 m, ATV ERP 350.0 kW

	POPULATION	AREA (sq km)
within Noise Limited Contour	1721058	25818.2
not affected by terrain losses	1710514	25294.0
lost to NTSC IX	0	0.0
lost to additional IX by ATV	5036	344.1
lost to ATV IX only	5036	344.1

Figure 3

```

lost to all IX                                5036          344.1

Potential Interfering Stations Included in above Scenario      6

22A TN COOKEVILLE      BPEDT      20080317ADB  CP
23A TN JELLICO           BLCDT      20020510AAJ  LIC
24A AL HUNTSVILLE      DTVPLN      DTVP0868    PLN
23A TN MEMPHIS           USERRECORD01  APP

Percent new IX =      0.1922%

Result key:      27
Scenario      7  Affected station      16
Before Analysis

Results for: 23A TN NASHVILLE      DTVPLN      DTVP0860      PLN
HAAT  367.0 m, ATV ERP  350.0 kW
POPULATION      AREA (sq km)
within Noise Limited Contour      1721058      25818.2
not affected by terrain losses      1710514      25294.0
lost to NTSC IX      0      0.0
lost to additional IX by ATV      1752      100.0
lost to ATV IX only      1752      100.0
lost to all IX      1752      100.0

Potential Interfering Stations Included in above Scenario      7

22A TN COOKEVILLE      BPEDT      20080317ADB  CP
23A TN JELLICO           DTVPLN      DTVP0858    PLN
24A AL HUNTSVILLE      BLEDT      20060927ALU  LIC
23A TN MEMPHIS           DTVPLN      DTVP0859    PLN

After Analysis

Results for: 23A TN NASHVILLE      DTVPLN      DTVP0860      PLN
HAAT  367.0 m, ATV ERP  350.0 kW
POPULATION      AREA (sq km)
within Noise Limited Contour      1721058      25818.2
not affected by terrain losses      1710514      25294.0
lost to NTSC IX      0      0.0
lost to additional IX by ATV      5036      344.1
lost to ATV IX only      5036      344.1
lost to all IX      5036      344.1

Potential Interfering Stations Included in above Scenario      7

22A TN COOKEVILLE      BPEDT      20080317ADB  CP
23A TN JELLICO           DTVPLN      DTVP0858    PLN
24A AL HUNTSVILLE      BLEDT      20060927ALU  LIC
23A TN MEMPHIS           USERRECORD01  APP

Percent new IX =      0.1922%

Result key:      28
Scenario      8  Affected station      16
Before Analysis

```

Figure 3

Results for: 23A TN NASHVILLE DTVPLN DTVP0860 PLN
 HAAT 367.0 m, ATV ERP 350.0 kW

	POPULATION	AREA (sq km)
within Noise Limited Contour	1721058	25818.2
not affected by terrain losses	1710514	25294.0
lost to NTSC IX	0	0.0
lost to additional IX by ATV	1752	100.0
lost to ATV IX only	1752	100.0
lost to all IX	1752	100.0

Potential Interfering Stations Included in above Scenario 8

22A TN COOKEVILLE	BPEDT	20080317ADB	CP
23A TN JELLICO	DTVPLN	DTVP0858	PLN
24A AL HUNTSVILLE	DTVPLN	DTVP0868	PLN
23A TN MEMPHIS	DTVPLN	DTVP0859	PLN

After Analysis

Results for: 23A TN NASHVILLE DTVPLN DTVP0860 PLN
 HAAT 367.0 m, ATV ERP 350.0 kW

	POPULATION	AREA (sq km)
within Noise Limited Contour	1721058	25818.2
not affected by terrain losses	1710514	25294.0
lost to NTSC IX	0	0.0
lost to additional IX by ATV	5036	344.1
lost to ATV IX only	5036	344.1
lost to all IX	5036	344.1

Potential Interfering Stations Included in above Scenario 8

22A TN COOKEVILLE	BPEDT	20080317ADB	CP
23A TN JELLICO	DTVPLN	DTVP0858	PLN
24A AL HUNTSVILLE	DTVPLN	DTVP0868	PLN
23A TN MEMPHIS	USERRECORD01		APP

Percent new IX = 0.1922%

Result key: 29
 Scenario 9 Affected station 16
 Before Analysis

Results for: 23A TN NASHVILLE DTVPLN DTVP0860 PLN
 HAAT 367.0 m, ATV ERP 350.0 kW

	POPULATION	AREA (sq km)
within Noise Limited Contour	1721058	25818.2
not affected by terrain losses	1710514	25294.0
lost to NTSC IX	0	0.0
lost to additional IX by ATV	10292	440.2
lost to ATV IX only	10292	440.2
lost to all IX	10292	440.2

Potential Interfering Stations Included in above Scenario 9

22A TN COOKEVILLE	DTVPLN	DTVP0822	PLN
23A TN JELLICO	BPCDT	20080620AGZ	APP
24A AL HUNTSVILLE	BLEDT	20060927ALU	LIC

Figure 3

23A TN MEMPHIS DTVPLN DTVP0859 PLN

After Analysis

Results for: 23A TN NASHVILLE DTVPLN DTVP0860 PLN
 HAAT 367.0 m, ATV ERP 350.0 kW

	POPULATION	AREA (sq km)
within Noise Limited Contour	1721058	25818.2
not affected by terrain losses	1710514	25294.0
lost to NTSC IX	0	0.0
lost to additional IX by ATV	13185	668.3
lost to ATV IX only	13185	668.3
lost to all IX	13185	668.3

Potential Interfering Stations Included in above Scenario 9

22A TN COOKEVILLE	DTVPLN	DTVP0822	PLN
23A TN JELLICO	BPCDT	20080620AGZ	APP
24A AL HUNTSVILLE	BLEDT	20060927ALU	LIC
23A TN MEMPHIS	USERRECORD01		APP

Percent new IX = 0.1702%

Result key: 30
 Scenario 10 Affected station 16
 Before Analysis

Results for: 23A TN NASHVILLE DTVPLN DTVP0860 PLN
 HAAT 367.0 m, ATV ERP 350.0 kW

	POPULATION	AREA (sq km)
within Noise Limited Contour	1721058	25818.2
not affected by terrain losses	1710514	25294.0
lost to NTSC IX	0	0.0
lost to additional IX by ATV	10292	440.2
lost to ATV IX only	10292	440.2
lost to all IX	10292	440.2

Potential Interfering Stations Included in above Scenario 10

22A TN COOKEVILLE	DTVPLN	DTVP0822	PLN
23A TN JELLICO	BPCDT	20080620AGZ	APP
24A AL HUNTSVILLE	DTVPLN	DTVP0868	PLN
23A TN MEMPHIS	DTVPLN	DTVP0859	PLN

After Analysis

Results for: 23A TN NASHVILLE DTVPLN DTVP0860 PLN
 HAAT 367.0 m, ATV ERP 350.0 kW

	POPULATION	AREA (sq km)
within Noise Limited Contour	1721058	25818.2
not affected by terrain losses	1710514	25294.0
lost to NTSC IX	0	0.0
lost to additional IX by ATV	13185	668.3
lost to ATV IX only	13185	668.3
lost to all IX	13185	668.3

Potential Interfering Stations Included in above Scenario 10

Figure 3

22A TN COOKEVILLE	DTVPLN	DTVP0822	PLN
23A TN JELLICO	BPCDT	20080620AGZ	APP
24A AL HUNTSVILLE	DTVPLN	DTVP0868	PLN
23A TN MEMPHIS	USERRECORD01		APP

Percent new IX = 0.1702%

Result key: 31
 Scenario 11 Affected station 16
 Before Analysis

Results for: 23A TN NASHVILLE DTVPLN DTVP0860 PLN
 HAAT 367.0 m, ATV ERP 350.0 kW

	POPULATION	AREA (sq km)
within Noise Limited Contour	1721058	25818.2
not affected by terrain losses	1710514	25294.0
lost to NTSC IX	0	0.0
lost to additional IX by ATV	10292	440.2
lost to ATV IX only	10292	440.2
lost to all IX	10292	440.2

Potential Interfering Stations Included in above Scenario 11

22A TN COOKEVILLE	BPEDT	20080317ADB	CP
23A TN JELLICO	BPCDT	20080620AGZ	APP
24A AL HUNTSVILLE	BLEDT	20060927ALU	LIC
23A TN MEMPHIS	DTVPLN	DTVP0859	PLN

After Analysis

Results for: 23A TN NASHVILLE DTVPLN DTVP0860 PLN
 HAAT 367.0 m, ATV ERP 350.0 kW

	POPULATION	AREA (sq km)
within Noise Limited Contour	1721058	25818.2
not affected by terrain losses	1710514	25294.0
lost to NTSC IX	0	0.0
lost to additional IX by ATV	13185	668.3
lost to ATV IX only	13185	668.3
lost to all IX	13185	668.3

Potential Interfering Stations Included in above Scenario 11

22A TN COOKEVILLE	BPEDT	20080317ADB	CP
23A TN JELLICO	BPCDT	20080620AGZ	APP
24A AL HUNTSVILLE	BLEDT	20060927ALU	LIC
23A TN MEMPHIS	USERRECORD01		APP

Percent new IX = 0.1702%

Result key: 32
 Scenario 12 Affected station 16
 Before Analysis

Results for: 23A TN NASHVILLE DTVPLN DTVP0860 PLN
 HAAT 367.0 m, ATV ERP 350.0 kW

	POPULATION	AREA (sq km)
--	------------	--------------

Figure 3

within Noise Limited Contour	1721058	25818.2
not affected by terrain losses	1710514	25294.0
lost to NTSC IX	0	0.0
lost to additional IX by ATV	10292	440.2
lost to ATV IX only	10292	440.2
lost to all IX	10292	440.2

Potential Interfering Stations Included in above Scenario 12

22A TN COOKEVILLE	BPEDT	20080317ADB	CP
23A TN JELLICO	BPCDT	20080620AGZ	APP
24A AL HUNTSVILLE	DTVPLN	DTVP0868	PLN
23A TN MEMPHIS	DTVPLN	DTVP0859	PLN

After Analysis

Results for: 23A TN NASHVILLE DTVPLN DTVP0860 PLN
 HAAT 367.0 m, ATV ERP 350.0 kW

	POPULATION	AREA (sq km)
within Noise Limited Contour	1721058	25818.2
not affected by terrain losses	1710514	25294.0
lost to NTSC IX	0	0.0
lost to additional IX by ATV	13185	668.3
lost to ATV IX only	13185	668.3
lost to all IX	13185	668.3

Potential Interfering Stations Included in above Scenario 12

22A TN COOKEVILLE	BPEDT	20080317ADB	CP
23A TN JELLICO	BPCDT	20080620AGZ	APP
24A AL HUNTSVILLE	DTVPLN	DTVP0868	PLN
23A TN MEMPHIS	USERRECORD01		APP

Percent new IX = 0.1702%

Result key: 33
 Scenario 13 Affected station 16
 Before Analysis

Results for: 23A TN NASHVILLE DTVPLN DTVP0860 PLN
 HAAT 367.0 m, ATV ERP 350.0 kW

	POPULATION	AREA (sq km)
within Noise Limited Contour	1721058	25818.2
not affected by terrain losses	1710514	25294.0
lost to NTSC IX	0	0.0
lost to additional IX by ATV	2073	120.0
lost to ATV IX only	2073	120.0
lost to all IX	2073	120.0

Potential Interfering Stations Included in above Scenario 13

22A TN COOKEVILLE	BMPEDT	20080620ADW	APP
23A TN JELLICO	BLCDT	20020510AAJ	LIC
24A AL HUNTSVILLE	BLEDT	20060927ALU	LIC
23A TN MEMPHIS	DTVPLN	DTVP0859	PLN

After Analysis

Figure 3

Results for: 23A TN NASHVILLE DTVPLN DTVP0860 PLN
 HAAT 367.0 m, ATV ERP 350.0 kW

	POPULATION	AREA (sq km)
within Noise Limited Contour	1721058	25818.2
not affected by terrain losses	1710514	25294.0
lost to NTSC IX	0	0.0
lost to additional IX by ATV	5357	364.1
lost to ATV IX only	5357	364.1
lost to all IX	5357	364.1

Potential Interfering Stations Included in above Scenario 13

22A TN COOKEVILLE	BMPEDT	20080620ADW	APP
23A TN JELLICO	BLCDDT	20020510AAJ	LIC
24A AL HUNTSVILLE	BLEDT	20060927ALU	LIC
23A TN MEMPHIS	USERRECORD01		APP

Percent new IX = 0.1922%

Result key: 34
 Scenario 14 Affected station 16
 Before Analysis

Results for: 23A TN NASHVILLE DTVPLN DTVP0860 PLN
 HAAT 367.0 m, ATV ERP 350.0 kW

	POPULATION	AREA (sq km)
within Noise Limited Contour	1721058	25818.2
not affected by terrain losses	1710514	25294.0
lost to NTSC IX	0	0.0
lost to additional IX by ATV	2073	120.0
lost to ATV IX only	2073	120.0
lost to all IX	2073	120.0

Potential Interfering Stations Included in above Scenario 14

22A TN COOKEVILLE	BMPEDT	20080620ADW	APP
23A TN JELLICO	BLCDDT	20020510AAJ	LIC
24A AL HUNTSVILLE	DTVPLN	DTVP0868	PLN
23A TN MEMPHIS	DTVPLN	DTVP0859	PLN

After Analysis

Results for: 23A TN NASHVILLE DTVPLN DTVP0860 PLN
 HAAT 367.0 m, ATV ERP 350.0 kW

	POPULATION	AREA (sq km)
within Noise Limited Contour	1721058	25818.2
not affected by terrain losses	1710514	25294.0
lost to NTSC IX	0	0.0
lost to additional IX by ATV	5357	364.1
lost to ATV IX only	5357	364.1
lost to all IX	5357	364.1

Potential Interfering Stations Included in above Scenario 14

22A TN COOKEVILLE	BMPEDT	20080620ADW	APP
23A TN JELLICO	BLCDDT	20020510AAJ	LIC

Figure 3

24A AL HUNTSVILLE	DTVPLN	DTVP0868	PLN
23A TN MEMPHIS	USERRECORD01		APP

Percent new IX = 0.1922%

Result key: 35
 Scenario 15 Affected station 16
 Before Analysis

Results for: 23A TN NASHVILLE DTVPLN DTVP0860 PLN
 HAAT 367.0 m, ATV ERP 350.0 kW

	POPULATION	AREA (sq km)
within Noise Limited Contour	1721058	25818.2
not affected by terrain losses	1710514	25294.0
lost to NTSC IX	0	0.0
lost to additional IX by ATV	2073	120.0
lost to ATV IX only	2073	120.0
lost to all IX	2073	120.0

Potential Interfering Stations Included in above Scenario 15

22A TN COOKEVILLE	BMPEDT	20080620ADW	APP
23A TN JELLICO	DTVPLN	DTVP0858	PLN
24A AL HUNTSVILLE	BLEDT	20060927ALU	LIC
23A TN MEMPHIS	DTVPLN	DTVP0859	PLN

After Analysis

Results for: 23A TN NASHVILLE DTVPLN DTVP0860 PLN
 HAAT 367.0 m, ATV ERP 350.0 kW

	POPULATION	AREA (sq km)
within Noise Limited Contour	1721058	25818.2
not affected by terrain losses	1710514	25294.0
lost to NTSC IX	0	0.0
lost to additional IX by ATV	5357	364.1
lost to ATV IX only	5357	364.1
lost to all IX	5357	364.1

Potential Interfering Stations Included in above Scenario 15

22A TN COOKEVILLE	BMPEDT	20080620ADW	APP
23A TN JELLICO	DTVPLN	DTVP0858	PLN
24A AL HUNTSVILLE	BLEDT	20060927ALU	LIC
23A TN MEMPHIS	USERRECORD01		APP

Percent new IX = 0.1922%

Result key: 36
 Scenario 16 Affected station 16
 Before Analysis

Results for: 23A TN NASHVILLE DTVPLN DTVP0860 PLN
 HAAT 367.0 m, ATV ERP 350.0 kW

	POPULATION	AREA (sq km)
within Noise Limited Contour	1721058	25818.2
not affected by terrain losses	1710514	25294.0
lost to NTSC IX	0	0.0

Figure 3

lost to additional IX by ATV	2073	120.0	
lost to ATV IX only	2073	120.0	
lost to all IX	2073	120.0	

Potential Interfering Stations Included in above Scenario 16

22A TN COOKEVILLE	BMPEDT	20080620ADW	APP
23A TN JELLICO	DTVPLN	DTVP0858	PLN
24A AL HUNTSVILLE	DTVPLN	DTVP0868	PLN
23A TN MEMPHIS	DTVPLN	DTVP0859	PLN

After Analysis

Results for: 23A TN NASHVILLE DTVPLN DTVP0860 PLN

HAAT 367.0 m, ATV ERP 350.0 kW

	POPULATION	AREA (sq km)
within Noise Limited Contour	1721058	25818.2
not affected by terrain losses	1710514	25294.0
lost to NTSC IX	0	0.0
lost to additional IX by ATV	5357	364.1
lost to ATV IX only	5357	364.1
lost to all IX	5357	364.1

Potential Interfering Stations Included in above Scenario 16

22A TN COOKEVILLE	BMPEDT	20080620ADW	APP
23A TN JELLICO	DTVPLN	DTVP0858	PLN
24A AL HUNTSVILLE	DTVPLN	DTVP0868	PLN
23A TN MEMPHIS	USERRECORD01		APP

Percent new IX = 0.1922%

Result key: 37

Scenario 17 Affected station 16

Before Analysis

Results for: 23A TN NASHVILLE DTVPLN DTVP0860 PLN

HAAT 367.0 m, ATV ERP 350.0 kW

	POPULATION	AREA (sq km)
within Noise Limited Contour	1721058	25818.2
not affected by terrain losses	1710514	25294.0
lost to NTSC IX	0	0.0
lost to additional IX by ATV	10366	452.2
lost to ATV IX only	10366	452.2
lost to all IX	10366	452.2

Potential Interfering Stations Included in above Scenario 17

22A TN COOKEVILLE	BMPEDT	20080620ADW	APP
23A TN JELLICO	BPCDT	20080620AGZ	APP
24A AL HUNTSVILLE	BLEDT	20060927ALU	LIC
23A TN MEMPHIS	DTVPLN	DTVP0859	PLN

After Analysis

Results for: 23A TN NASHVILLE DTVPLN DTVP0860 PLN

HAAT 367.0 m, ATV ERP 350.0 kW

Figure 3

	POPULATION	AREA (sq km)	
within Noise Limited Contour	1721058	25818.2	
not affected by terrain losses	1710514	25294.0	
lost to NTSC IX	0	0.0	
lost to additional IX by ATV	13259	680.3	
lost to ATV IX only	13259	680.3	
lost to all IX	13259	680.3	

Potential Interfering Stations Included in above Scenario 17

22A TN COOKEVILLE	BMPEDT	20080620ADW	APP
23A TN JELLICO	BPCDT	20080620AGZ	APP
24A AL HUNTSVILLE	BLEDT	20060927ALU	LIC
23A TN MEMPHIS	USERRECORD01		APP

Percent new IX = 0.1702%

Result key: 38

Scenario 18 Affected station 16

Before Analysis

Results for: 23A TN NASHVILLE DTVP0860 PLN

HAAT 367.0 m, ATV ERP 350.0 kW

	POPULATION	AREA (sq km)
within Noise Limited Contour	1721058	25818.2
not affected by terrain losses	1710514	25294.0
lost to NTSC IX	0	0.0
lost to additional IX by ATV	10366	452.2
lost to ATV IX only	10366	452.2
lost to all IX	10366	452.2

Potential Interfering Stations Included in above Scenario 18

22A TN COOKEVILLE	BMPEDT	20080620ADW	APP
23A TN JELLICO	BPCDT	20080620AGZ	APP
24A AL HUNTSVILLE	DTVP0868	PLN	
23A TN MEMPHIS	DTVP0859	PLN	

After Analysis

Results for: 23A TN NASHVILLE DTVP0860 PLN

HAAT 367.0 m, ATV ERP 350.0 kW

	POPULATION	AREA (sq km)
within Noise Limited Contour	1721058	25818.2
not affected by terrain losses	1710514	25294.0
lost to NTSC IX	0	0.0
lost to additional IX by ATV	13259	680.3
lost to ATV IX only	13259	680.3
lost to all IX	13259	680.3

Potential Interfering Stations Included in above Scenario 18

22A TN COOKEVILLE	BMPEDT	20080620ADW	APP
23A TN JELLICO	BPCDT	20080620AGZ	APP
24A AL HUNTSVILLE	DTVP0868	PLN	
23A TN MEMPHIS	USERRECORD01	APP	

Figure 3

Percent new IX = 0.1702%

Worst case new IX 0.1922% Scenario 13

#####

Analysis of Interference to Affected Station 17

Analysis of current record

Channel	Call	City/State	Application	Ref. No.
24	KVTN	PINE BLUFF AR	BPCDT	-19990924AAQ

Stations Potentially Affecting This Station

Chan	Call	City/State	Dist(km)	Status	Application	Ref. No.
23	WTWV	MEMPHIS TN	198.2	PLN	DTVPLN	-DTVP0859
24	KLTS-DR	SHREVEPORT LA	269.8	APP	BPRM	-20080620AOC
24	KLTS-TV	SHREVEPORT LA	269.8	PLN	DTVPLN	-DTVP0883
24	KLTS-TV	SHREVEPORT LA	269.8	APP	BMPEDT	-20081113AES
24	WMDN	MERIDIAN MS	395.9	CP	BPCDT	-20080617ADH
24	WMDN	MERIDIAN MS	395.9	PLN	DTVPLN	-DTVP0889
25	WMAO-TV	GREENWOOD MS	188.9	CP MOD	BMPEDT	-20080619AGI
25	WMAO-TV	GREENWOOD MS	188.9	PLN	DTVPLN	-DTVP0925
25	WPTY-TV	MEMPHIS TN	222.6	LIC	BLCDDT	-20050628AAP
25	WPTY-TV	MEMPHIS TN	222.6	PLN	DTVPLN	-DTVP0934
23	WTWV	MEMPHIS TN	216.7	APP	USERRECORD-01	

Proposed station is beyond the site to
nearest cell evaluation distance

#####

Analysis of Interference to Affected Station 18

Analysis of current record

Channel	Call	City/State	Application	Ref. No.
24	KVTN	PINE BLUFF AR	DTVPLN	-DTVP0869

Stations Potentially Affecting This Station

Chan	Call	City/State	Dist(km)	Status	Application	Ref. No.
23	WTWV	MEMPHIS TN	198.2	PLN	DTVPLN	-DTVP0859
24	KLTS-DR	SHREVEPORT LA	269.8	APP	BPRM	-20080620AOC
24	KLTS-TV	SHREVEPORT LA	269.8	PLN	DTVPLN	-DTVP0883
24	KLTS-TV	SHREVEPORT LA	269.8	APP	BMPEDT	-20081113AES
24	WMDN	MERIDIAN MS	395.9	CP	BPCDT	-20080617ADH
24	WMDN	MERIDIAN MS	395.9	PLN	DTVPLN	-DTVP0889
25	WMAO-TV	GREENWOOD MS	188.9	CP MOD	BMPEDT	-20080619AGI
25	WMAO-TV	GREENWOOD MS	188.9	PLN	DTVPLN	-DTVP0925
25	WPTY-TV	MEMPHIS TN	222.6	LIC	BLCDDT	-20050628AAP
25	WPTY-TV	MEMPHIS TN	222.6	PLN	DTVPLN	-DTVP0934
23	WTWV	MEMPHIS TN	216.7	APP	USERRECORD-01	

Figure 3

Proposed station is beyond the site to
nearest cell evaluation distance

#####

Analysis of Interference to Affected Station 19

Analysis of current record

Channel	Call	City/State	Application Ref. No.
23	WTWV	MEMPHIS TN	USERRECORD-01

Stations Potentially Affecting This Station

Chan	Call	City/State	Dist(km)	Status	Application Ref. No.
22	WFIQ	FLORENCE AL	198.2	LIC	BLEDT -20060718ACG
22	WFIQ	FLORENCE AL	198.2	PLN	DTVPLN -DTVP0788
22	WFIQ	FLORENCE AL	198.2	CP	BPEDT -20080619AGU
23	KOZK	SPRINGFIELD MO	355.0	LIC	BLEDT -20030911AAS
23	KOZK	SPRINGFIELD MO	355.0	PLN	DTVPLN -DTVP0847
23	WNAB	NASHVILLE TN	296.8	LIC	BLCDDT -20040712AAO
23	WNAB	NASHVILLE TN	296.8	PLN	DTVPLN -DTVP0860
24	KVTN	PINE BLUFF AR	216.7	CP	BPCDDT -19990924AAQ
24	KVTN	PINE BLUFF AR	216.7	PLN	DTVPLN -DTVP0869

Total scenarios = 4

Result key: 39
Scenario 1 Affected station 19
Before Analysis

Results for: 23A TN MEMPHIS USERRECORD01 APP

HAAT 258.0 m, ATV ERP 1000.0 kW

	POPULATION	AREA (sq km)
within Noise Limited Contour	1422598	26027.1
not affected by terrain losses	1417367	25911.1
lost to NTSC IX	0	0.0
lost to additional IX by ATV	1242	76.0
lost to ATV IX only	1242	76.0
lost to all IX	1242	76.0

Potential Interfering Stations Included in above Scenario 1

23A MO SPRINGFIELD	BLEDT	20030911AAS	LIC
23A TN NASHVILLE	BLCDDT	20040712AAO	LIC

Result key: 40
Scenario 2 Affected station 19
Before Analysis

Results for: 23A TN MEMPHIS USERRECORD01 APP

HAAT 258.0 m, ATV ERP 1000.0 kW

	POPULATION	AREA (sq km)
within Noise Limited Contour	1422598	26027.1
not affected by terrain losses	1417367	25911.1

Figure 3

lost to NTSC IX	0	0.0
lost to additional IX by ATV	1242	76.0
lost to ATV IX only	1242	76.0
lost to all IX	1242	76.0

Potential Interfering Stations Included in above Scenario 2

23A MO SPRINGFIELD	BLEDT	20030911AAS	LIC
23A TN NASHVILLE	DTVPLN	DTVP0860	PLN

Result key: 41
 Scenario 3 Affected station 19
 Before Analysis

Results for: 23A TN MEMPHIS USERRECORD01 APP
 HAAT 258.0 m, ATV ERP 1000.0 kW

	POPULATION	AREA (sq km)
within Noise Limited Contour	1422598	26027.1
not affected by terrain losses	1417367	25911.1
lost to NTSC IX	0	0.0
lost to additional IX by ATV	1242	76.0
lost to ATV IX only	1242	76.0
lost to all IX	1242	76.0

Potential Interfering Stations Included in above Scenario 3

23A MO SPRINGFIELD	DTVPLN	DTVP0847	PLN
23A TN NASHVILLE	BLCDT	20040712AAO	LIC

Result key: 42
 Scenario 4 Affected station 19
 Before Analysis

Results for: 23A TN MEMPHIS USERRECORD01 APP
 HAAT 258.0 m, ATV ERP 1000.0 kW

	POPULATION	AREA (sq km)
within Noise Limited Contour	1422598	26027.1
not affected by terrain losses	1417367	25911.1
lost to NTSC IX	0	0.0
lost to additional IX by ATV	1242	76.0
lost to ATV IX only	1242	76.0
lost to all IX	1242	76.0

Potential Interfering Stations Included in above Scenario 4

23A MO SPRINGFIELD	DTVPLN	DTVP0847	PLN
23A TN NASHVILLE	DTVPLN	DTVP0860	PLN

#####

FINISHED FINISHED FINISHED FINISHED FINISHED FINISHED

APPENDIX

TRANSMITTING ANTENNA VERTICAL AND HORIZONTAL PLANE PATTERN

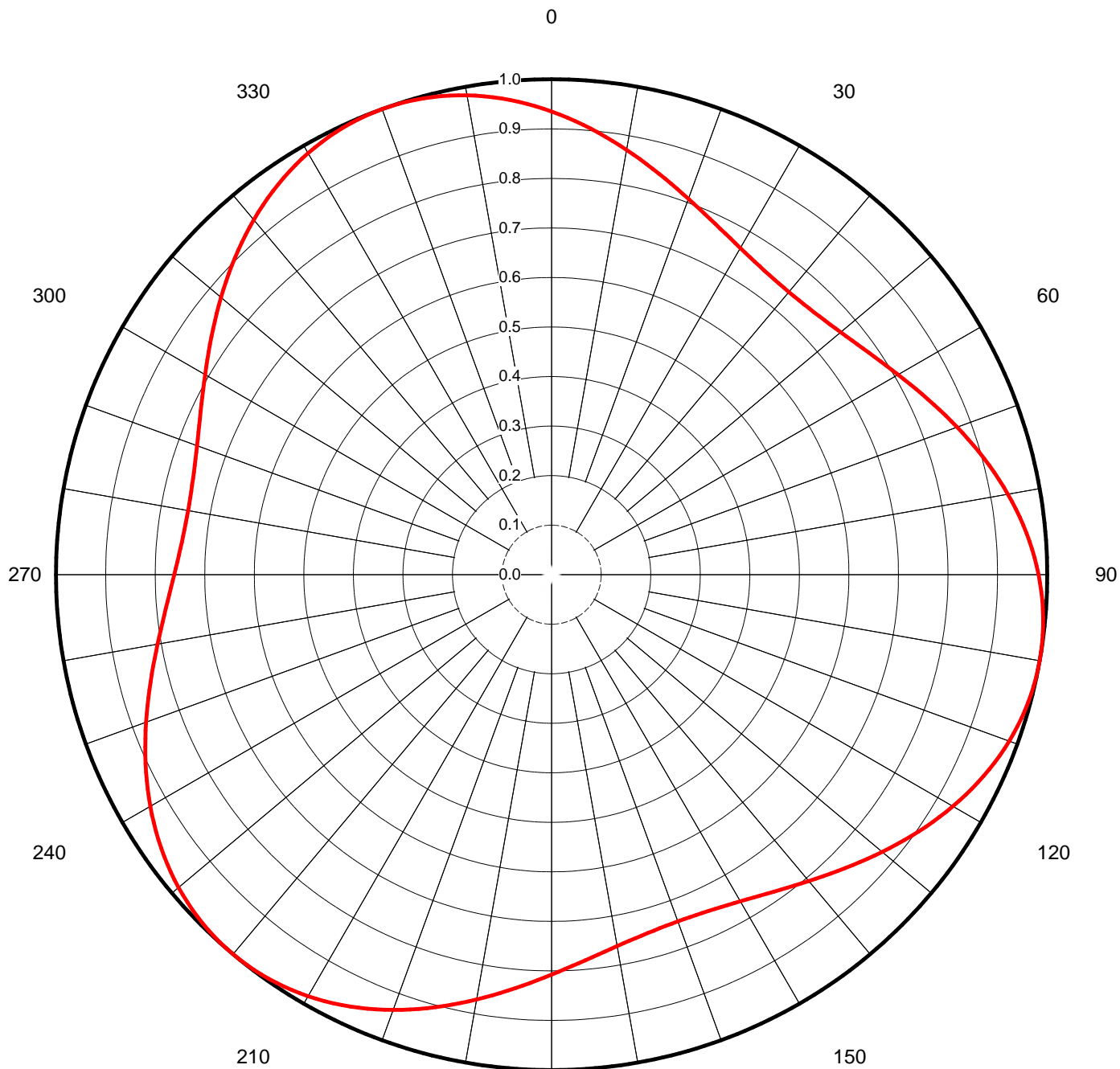


Proposal Number	C-02688	Revision:	1
Date	18-Jul-08		
Call Letters	WTWV-DT	Channel	23
Location	Memphis, TN		
Customer			
Antenna Type	TFU-30GTH/VP-R 6T130		

AZIMUTH PATTERN

Gain	1.30	(1.14 dB)
Calculated / Measured		Calculated

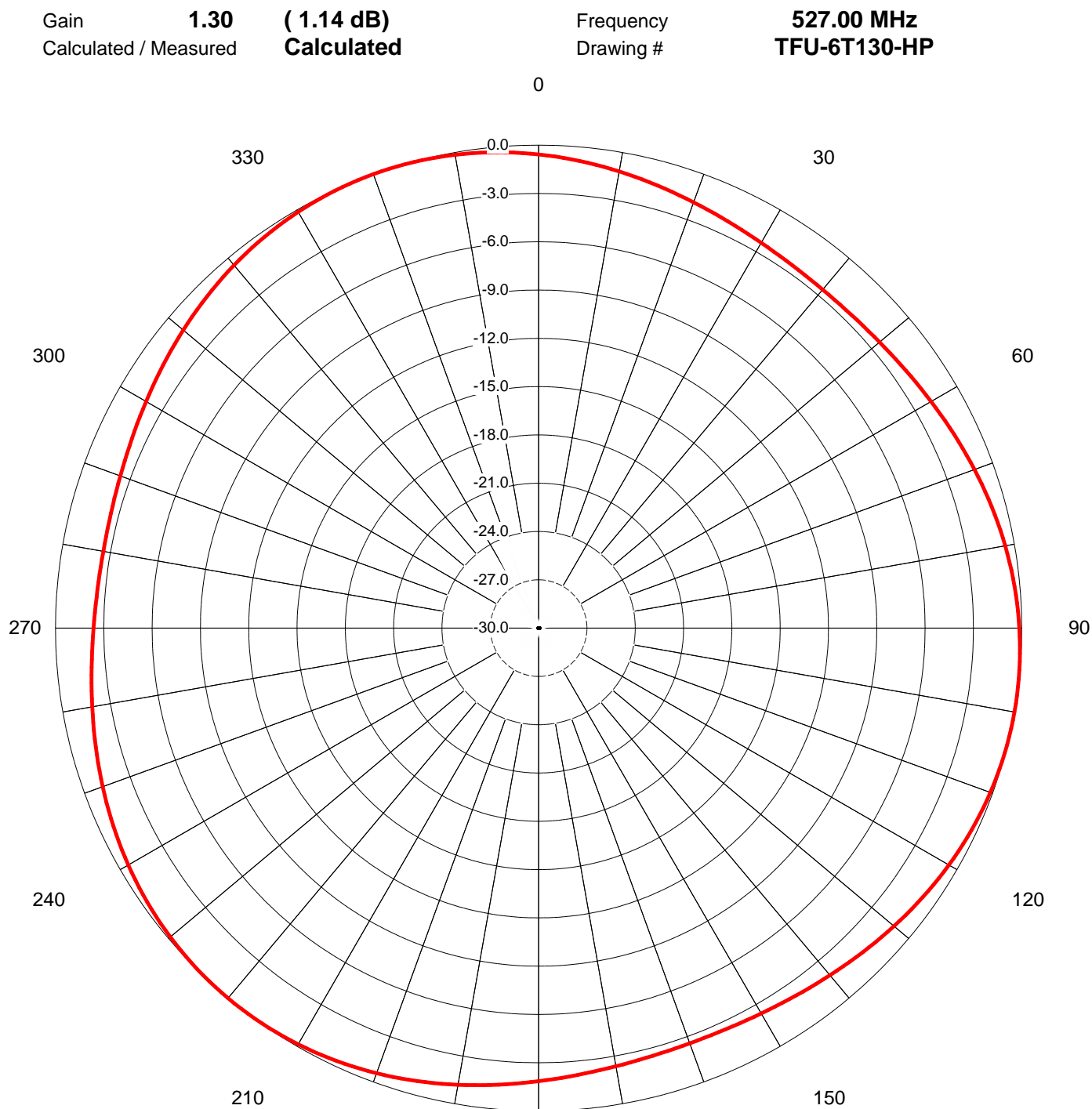
Frequency	527.00 MHz
Drawing #	TFU-6T130-HP





Proposal Number	C-02688	Revision:	1
Date	18-Jul-08		
Call Letters	WTWV-DT	Channel	23
Location	Memphis, TN		
Customer			
Antenna Type	TFU-30GTH/VP-R 6T130		

AZIMUTH PATTERN (dB)



180

This document contains proprietary and confidential information of Dielectric Communications and SPX Corporation. It is to be used solely for the purpose for which it is provided. No disclosure, reproduction, or use of this document or any part of it may be made without the written permission of Dielectric Communications or SPX Corporation.



Proposal Number	C-02688	Revision:	1
Date	18-Jul-08		
Call Letters	WTWV-DT	Channel	23
Location	Memphis, TN		
Customer			
Antenna Type	TFU-30GTH/VP-R 6T130		

TABULATION OF AZIMUTH PATTERN

Azimuth Pattern Drawing #: **TFU-6T130-HP**

Angle	Field	Angle	Field	Angle	Field	Angle	Field	Angle	Field	Angle	Field	Angle	Field	Angle	Field
0	0.935	45	0.749	90	0.982	135	0.838	180	0.807	225	0.996	270	0.761	315	0.904
1	0.929	46	0.751	91	0.986	136	0.831	181	0.813	226	0.994	271	0.758	316	0.910
2	0.923	47	0.753	92	0.989	137	0.825	182	0.819	227	0.991	272	0.756	317	0.917
3	0.917	48	0.756	93	0.991	138	0.819	183	0.825	228	0.989	273	0.753	318	0.923
4	0.910	49	0.758	94	0.994	139	0.813	184	0.831	229	0.986	274	0.751	319	0.929
5	0.904	50	0.761	95	0.996	140	0.807	185	0.838	230	0.982	275	0.749	320	0.935
6	0.897	51	0.765	96	0.997	141	0.802	186	0.844	231	0.979	276	0.747	321	0.941
7	0.891	52	0.769	97	0.998	142	0.796	187	0.851	232	0.975	277	0.746	322	0.946
8	0.884	53	0.773	98	0.999	143	0.791	188	0.857	233	0.971	278	0.745	323	0.952
9	0.877	54	0.777	99	1.000	144	0.786	189	0.864	234	0.966	279	0.745	324	0.957
10	0.871	55	0.781	100	1.000	145	0.781	190	0.871	235	0.962	280	0.745	325	0.962
11	0.864	56	0.786	101	1.000	146	0.777	191	0.877	236	0.957	281	0.745	326	0.966
12	0.857	57	0.791	102	0.999	147	0.772	192	0.884	237	0.952	282	0.745	327	0.971
13	0.851	58	0.796	103	0.998	148	0.769	193	0.891	238	0.946	283	0.746	328	0.975
14	0.844	59	0.802	104	0.997	149	0.765	194	0.897	239	0.941	284	0.747	329	0.979
15	0.838	60	0.807	105	0.996	150	0.761	195	0.904	240	0.935	285	0.749	330	0.982
16	0.831	61	0.813	106	0.994	151	0.758	196	0.910	241	0.929	286	0.751	331	0.986
17	0.825	62	0.819	107	0.991	152	0.756	197	0.917	242	0.923	287	0.753	332	0.989
18	0.819	63	0.825	108	0.989	153	0.753	198	0.923	243	0.917	288	0.756	333	0.991
19	0.813	64	0.831	109	0.986	154	0.751	199	0.929	244	0.910	289	0.758	334	0.994
20	0.807	65	0.838	110	0.982	155	0.749	200	0.935	245	0.904	290	0.761	335	0.996
21	0.802	66	0.844	111	0.979	156	0.747	201	0.941	246	0.897	291	0.765	336	0.997
22	0.796	67	0.851	112	0.975	157	0.746	202	0.946	247	0.891	292	0.769	337	0.998
23	0.791	68	0.857	113	0.971	158	0.745	203	0.952	248	0.884	293	0.772	338	0.999
24	0.786	69	0.864	114	0.966	159	0.745	204	0.957	249	0.877	294	0.777	339	1.000
25	0.781	70	0.871	115	0.962	160	0.745	205	0.962	250	0.871	295	0.781	340	1.000
26	0.777	71	0.877	116	0.957	161	0.745	206	0.966	251	0.864	296	0.786	341	1.000
27	0.773	72	0.884	117	0.952	162	0.745	207	0.971	252	0.857	297	0.791	342	0.999
28	0.769	73	0.891	118	0.946	163	0.746	208	0.975	253	0.851	298	0.796	343	0.998
29	0.765	74	0.897	119	0.941	164	0.747	209	0.979	254	0.844	299	0.802	344	0.997
30	0.761	75	0.904	120	0.935	165	0.749	210	0.982	255	0.838	300	0.807	345	0.996
31	0.758	76	0.910	121	0.929	166	0.751	211	0.986	256	0.831	301	0.813	346	0.994
32	0.756	77	0.917	122	0.923	167	0.753	212	0.989	257	0.825	302	0.819	347	0.991
33	0.753	78	0.923	123	0.917	168	0.756	213	0.991	258	0.819	303	0.825	348	0.989
34	0.751	79	0.929	124	0.910	169	0.758	214	0.994	259	0.813	304	0.831	349	0.986
35	0.749	80	0.935	125	0.904	170	0.761	215	0.996	260	0.807	305	0.838	350	0.982
36	0.747	81	0.941	126	0.897	171	0.765	216	0.997	261	0.802	306	0.844	351	0.979
37	0.746	82	0.946	127	0.891	172	0.769	217	0.998	262	0.796	307	0.851	352	0.975
38	0.745	83	0.952	128	0.884	173	0.772	218	0.999	263	0.791	308	0.857	353	0.971
39	0.745	84	0.957	129	0.877	174	0.777	219	1.000	264	0.786	309	0.864	354	0.966
40	0.745	85	0.962	130	0.871	175	0.781	220	1.000	265	0.781	310	0.871	355	0.962
41	0.745	86	0.966	131	0.864	176	0.786	221	1.000	266	0.777	311	0.877	356	0.957
42	0.745	87	0.971	132	0.857	177	0.791	222	0.999	267	0.772	312	0.884	357	0.952
43	0.746	88	0.975	133	0.851	178	0.796	223	0.998	268	0.769	313	0.891	358	0.946
44	0.747	89	0.979	134	0.844	179	0.802	224	0.997	269	0.765	314	0.897	359	0.941

This document contains proprietary and confidential information of Dielectric Communications and SPX Corporation. It is to be used solely for the purpose for which it is provided. No disclosure, reproduction, or use of this document or any part of it may be made without the written permission of Dielectric Communications or SPX Corporation.

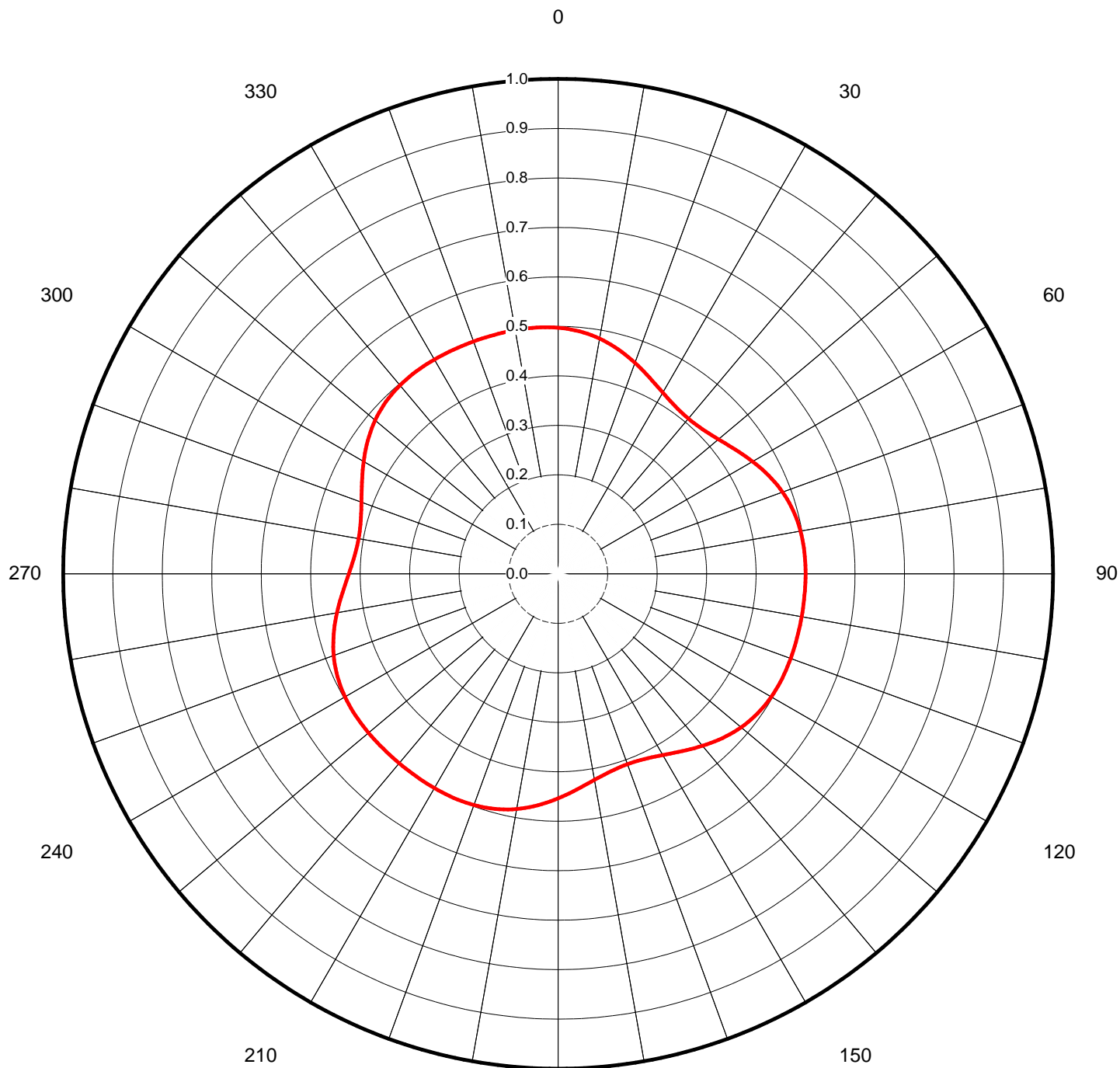


Proposal Number	C-02688	Revision:	1
Date	18-Jul-08		
Call Letters	WTWV-DT	Channel	23
Location	Memphis, TN		
Customer			
Antenna Type	TFU-30GTH/VP-R 6T130		

AZIMUTH PATTERN/VERTICAL POLARIZATION

Gain **1.10** **(0.41 dB)**
Calculated / Measured **Calculated**

Frequency **527.00 MHz**
Drawing # **TFU-6T110-VP**





Proposal Number	C-02688	Revision:	1
Date	18-Jul-08		
Call Letters	WTWV-DT	Channel	23
Location	Memphis, TN		
Customer			
Antenna Type	TFU-30GTH/VP-R 6T130		

AZIMUTH PATTERN/VERTICAL POLARIZATION (dB)

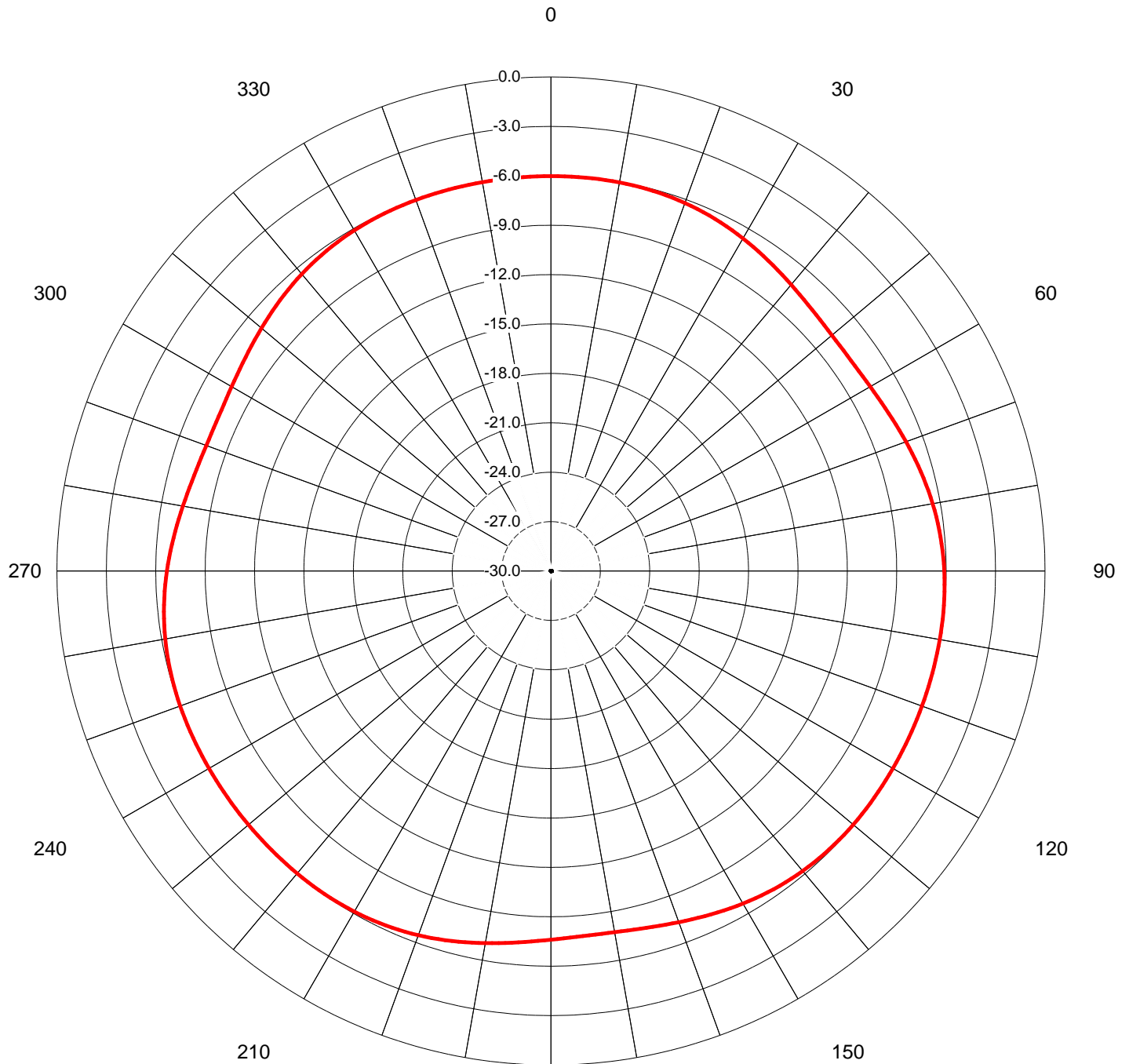
Gain
Calculated / Measured

1.30

(1.14 dB)
Calculated

Frequency
Drawing #

527.00 MHz
TFU-6T130-HP



180

This document contains proprietary and confidential information of Dielectric Communications and SPX Corporation. It is to be used solely for the purpose for which it is provided. No disclosure, reproduction, or use of this document or any part of it may be made without the written permission of Dielectric Communications or SPX Corporation.



Proposal Number	C-02688	Revision:	1
Date	18-Jul-08		
Call Letters	WTWV-DT	Channel	23
Location	Memphis, TN		
Customer			
Antenna Type	TFU-30GTH/VP-R 6T130		

TABULATION OF AZIMUTH PATTERN/VERTICAL POLARIZATION

Azimuth Pattern Drawing #: **TFU-6T110-VP**

Angle	Field	Angle	Field	Angle	Field	Angle	Field	Angle	Field	Angle	Field	Angle	Field	Angle	Field
0	0.497	45	0.413	90	0.500	135	0.469	180	0.454	225	0.500	270	0.423	315	0.492
1	0.496	46	0.414	91	0.500	136	0.466	181	0.457	226	0.500	271	0.420	316	0.493
2	0.495	47	0.416	92	0.500	137	0.463	182	0.460	227	0.500	272	0.418	317	0.494
3	0.494	48	0.418	93	0.500	138	0.460	183	0.463	228	0.500	273	0.416	318	0.495
4	0.493	49	0.420	94	0.500	139	0.457	184	0.466	229	0.500	274	0.414	319	0.496
5	0.492	50	0.423	95	0.500	140	0.454	185	0.469	230	0.500	275	0.413	320	0.497
6	0.490	51	0.425	96	0.500	141	0.450	186	0.472	231	0.500	276	0.412	321	0.498
7	0.489	52	0.428	97	0.500	142	0.447	187	0.475	232	0.500	277	0.411	322	0.498
8	0.487	53	0.431	98	0.500	143	0.444	188	0.478	233	0.500	278	0.410	323	0.499
9	0.485	54	0.434	99	0.500	144	0.440	189	0.480	234	0.500	279	0.410	324	0.499
10	0.483	55	0.437	100	0.500	145	0.437	190	0.483	235	0.500	280	0.409	325	0.500
11	0.480	56	0.440	101	0.500	146	0.434	191	0.485	236	0.499	281	0.410	326	0.500
12	0.478	57	0.444	102	0.500	147	0.431	192	0.487	237	0.499	282	0.410	327	0.500
13	0.475	58	0.447	103	0.500	148	0.428	193	0.489	238	0.498	283	0.411	328	0.500
14	0.472	59	0.450	104	0.500	149	0.425	194	0.490	239	0.498	284	0.412	329	0.500
15	0.469	60	0.454	105	0.500	150	0.423	195	0.492	240	0.497	285	0.413	330	0.500
16	0.466	61	0.457	106	0.500	151	0.420	196	0.493	241	0.496	286	0.414	331	0.500
17	0.463	62	0.460	107	0.500	152	0.418	197	0.494	242	0.495	287	0.416	332	0.500
18	0.460	63	0.463	108	0.500	153	0.416	198	0.495	243	0.494	288	0.418	333	0.500
19	0.457	64	0.466	109	0.500	154	0.414	199	0.496	244	0.493	289	0.420	334	0.500
20	0.454	65	0.469	110	0.500	155	0.413	200	0.497	245	0.492	290	0.423	335	0.500
21	0.450	66	0.472	111	0.500	156	0.412	201	0.498	246	0.490	291	0.425	336	0.500
22	0.447	67	0.475	112	0.500	157	0.411	202	0.498	247	0.489	292	0.428	337	0.500
23	0.444	68	0.478	113	0.500	158	0.410	203	0.499	248	0.487	293	0.431	338	0.500
24	0.440	69	0.480	114	0.500	159	0.410	204	0.499	249	0.485	294	0.434	339	0.500
25	0.437	70	0.483	115	0.500	160	0.409	205	0.500	250	0.483	295	0.437	340	0.500
26	0.434	71	0.485	116	0.499	161	0.410	206	0.500	251	0.480	296	0.440	341	0.500
27	0.431	72	0.487	117	0.499	162	0.410	207	0.500	252	0.478	297	0.444	342	0.500
28	0.428	73	0.489	118	0.498	163	0.411	208	0.500	253	0.475	298	0.447	343	0.500
29	0.425	74	0.490	119	0.498	164	0.412	209	0.500	254	0.472	299	0.450	344	0.500
30	0.423	75	0.492	120	0.497	165	0.413	210	0.500	255	0.469	300	0.454	345	0.500
31	0.420	76	0.493	121	0.496	166	0.414	211	0.500	256	0.466	301	0.457	346	0.500
32	0.418	77	0.494	122	0.495	167	0.416	212	0.500	257	0.463	302	0.460	347	0.500
33	0.416	78	0.495	123	0.494	168	0.418	213	0.500	258	0.460	303	0.463	348	0.500
34	0.414	79	0.496	124	0.493	169	0.420	214	0.500	259	0.457	304	0.466	349	0.500
35	0.413	80	0.497	125	0.492	170	0.423	215	0.500	260	0.454	305	0.469	350	0.500
36	0.412	81	0.498	126	0.490	171	0.425	216	0.500	261	0.450	306	0.472	351	0.500
37	0.411	82	0.498	127	0.489	172	0.428	217	0.500	262	0.447	307	0.475	352	0.500
38	0.410	83	0.499	128	0.487	173	0.431	218	0.500	263	0.444	308	0.478	353	0.500
39	0.410	84	0.499	129	0.485	174	0.434	219	0.500	264	0.440	309	0.480	354	0.500
40	0.409	85	0.500	130	0.483	175	0.437	220	0.500	265	0.437	310	0.483	355	0.500
41	0.410	86	0.500	131	0.480	176	0.440	221	0.500	266	0.434	311	0.485	356	0.499
42	0.410	87	0.500	132	0.478	177	0.444	222	0.500	267	0.431	312	0.487	357	0.499
43	0.411	88	0.500	133	0.475	178	0.447	223	0.500	268	0.428	313	0.489	358	0.498
44	0.412	89	0.500	134	0.472	179	0.450	224	0.500	269	0.425	314	0.490	359	0.498

This document contains proprietary and confidential information of Dielectric Communications and SPX Corporation. It is to be used solely for the purpose for which it is provided. No disclosure, reproduction, or use of this document or any part of it may be made without the written permission of Dielectric Communications or SPX Corporation.