

**W261AX Weirton WV**

Latitude: 40-24-20 N / Longitude: 080-27-52 W  
ERP: 0.075 kW / Channel: 261 / 100.1 MHz  
AMSL Height: 388.3 m  
Horiz. Pattern: Omni

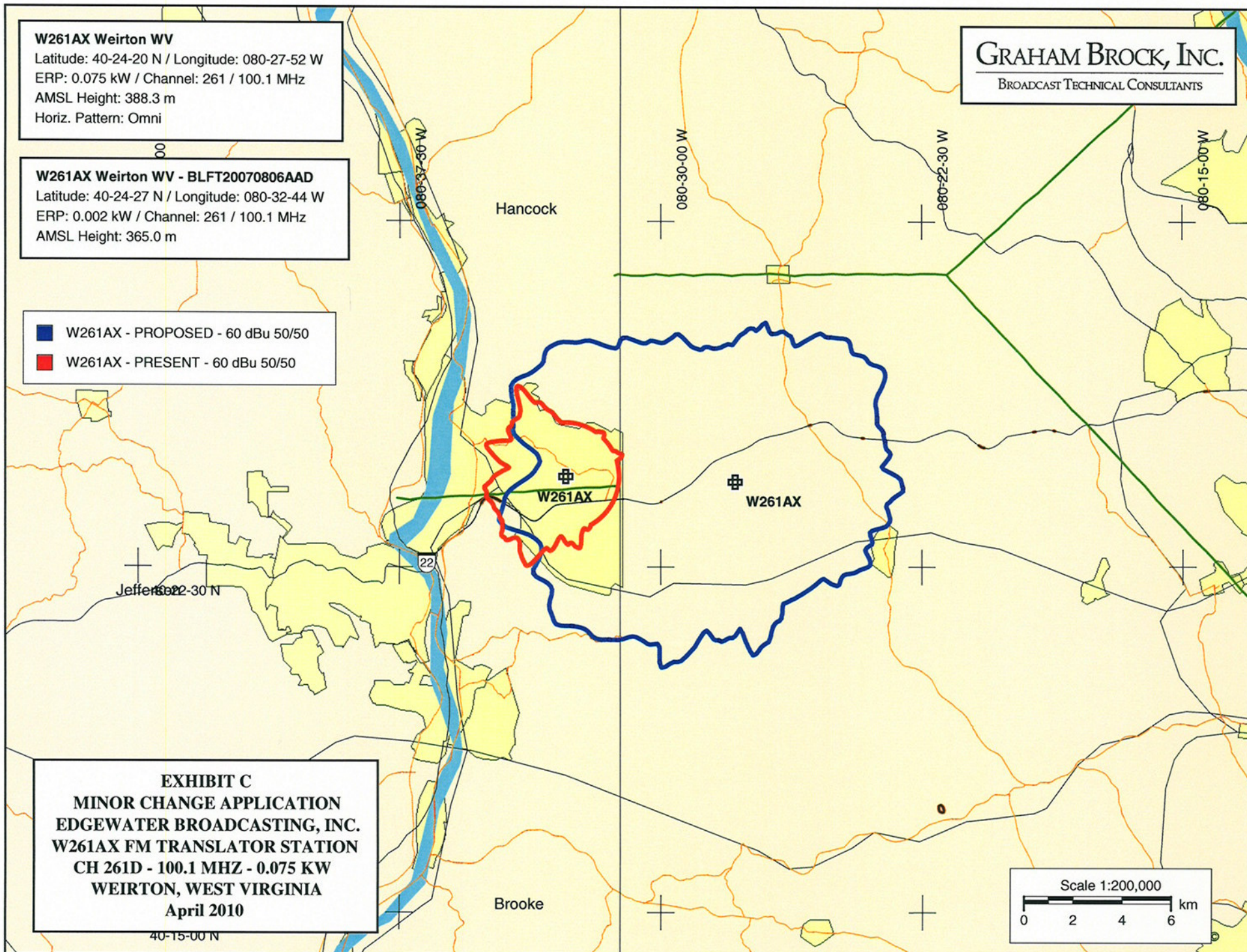
**W261AX Weirton WV - BLFT20070806AAD**

Latitude: 40-24-27 N / Longitude: 080-32-44 W  
ERP: 0.002 kW / Channel: 261 / 100.1 MHz  
AMSL Height: 365.0 m

- W261AX - PROPOSED - 60 dBu 50/50
- W261AX - PRESENT - 60 dBu 50/50

**GRAHAM BROCK, INC.**

BROADCAST TECHNICAL CONSULTANTS



**EXHIBIT C**

**MINOR CHANGE APPLICATION  
EDGEWATER BROADCASTING, INC.  
W261AX FM TRANSLATOR STATION  
CH 261D - 100.1 MHZ - 0.075 KW  
WEIRTON, WEST VIRGINIA  
April 2010**

Scale 1:200,000

0 2 4 6 km