

EXHIBIT 12

Waiver Request of Section 74.1204

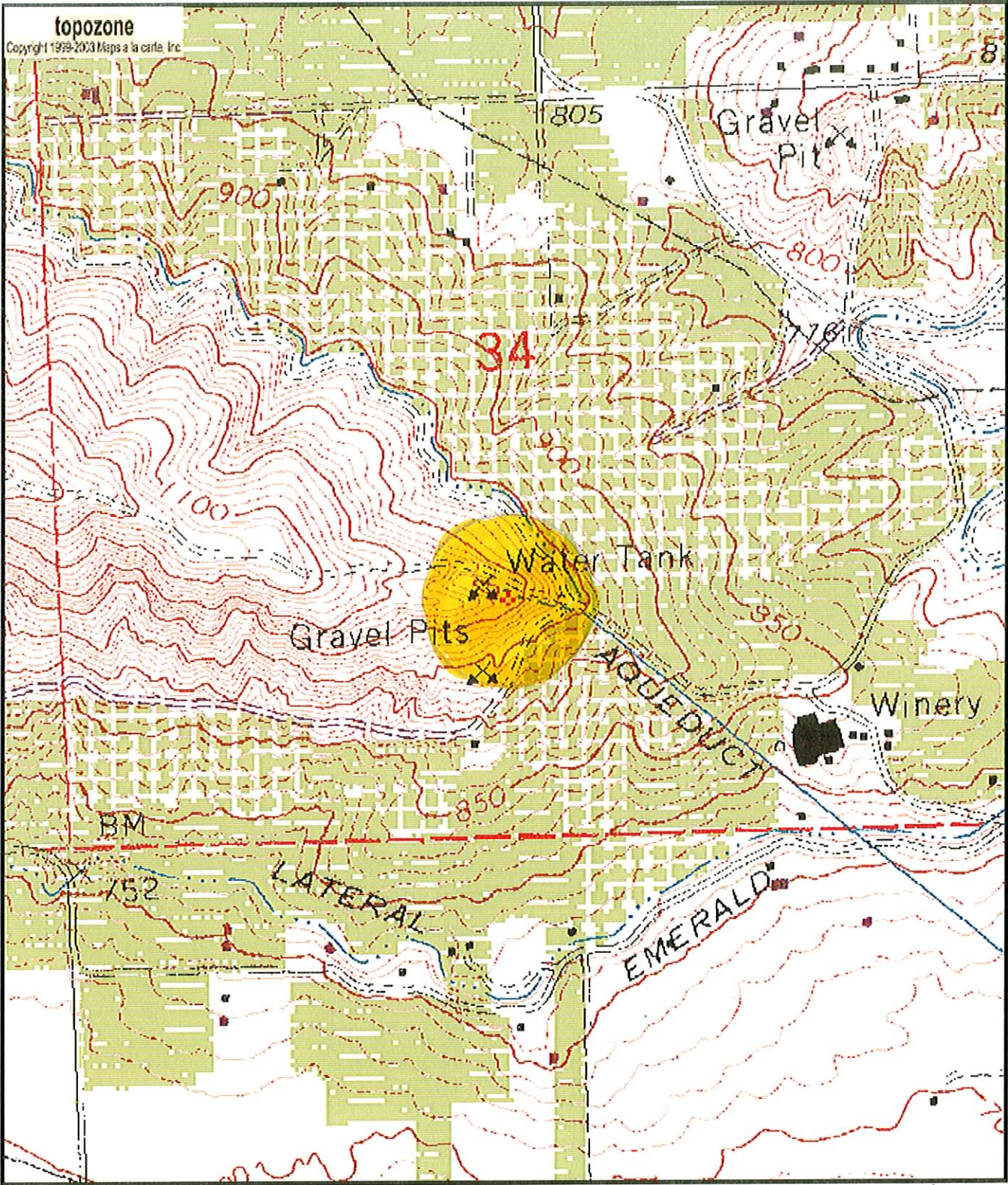
Granger, WA K279AK 190 Watts ERP

Calvary Chapel of Twin Falls, Inc. 3/06

The proposed site is contained entirely inside the service contour of second-adjacent station KXDD Yakima, WA

KXDD

The proposed site is contained entirely inside the service contour of second-adjacent station KXDD, Channel 281, Class C1, 100kW, Yakima, WA. The level of least arriving protected F(50,50) signal at the proposed transmitter site is 78-dBu. Using the Undesired-to-Desired method for calculating proposed interference, the interfering contour with respect to KXDD is 118-dBu (free-space contour method employed). The interfering signal would, in the worst case at the maximum radial, extend 124 meters, or .124km, from the base of the pole. Attached is a section of the Quadrangle Map Sunnyside, WA which shows this pole is located in a very sparsely populated area and there are no residences, businesses or major roadways that are located within the interfering contour. Calvary Chapel of Twin Falls, Inc. respectfully requests a waiver of the FM translator contour overlap regulations with respect to second-adjacent channel station KXDD.



0 0.1 0.2 0.3 0.4 0.5 km
0 0.09 0.18 0.27 0.36 0.45 mi
Map center is 46° 18' 21"N, 120° 03' 06"W (NAD27)
Sunnyside quadrangle
Projection is UTM Zone 10 NAD83 Datum

M
G
M=17.259
G=2.133

Contour.out

TERRAIN AND CONTOUR DATA
GRANGER, WA K279AK 190 WATTS ERP
CALVARY CHAPEL OF TWIN FALLS, INC.
MARCH 2006

N. Lat. = 46 18 21 W. Lng. = 120 03 06
HAAT and Distance to Contour - FCC Method - 03 Arc Sec.

Azi .	AV EL	HAAT	ERP kW	dBk	Fi el d	60-F5
000	360.9	-43.9	0.1900	-7.21	1.000	6.62
030	340.4	-23.4	0.1900	-7.21	1.000	6.62
060	303.9	13.1	0.1900	-7.21	1.000	6.62
090	267.9	49.1	0.1900	-7.21	1.000	8.52
120	230.1	86.9	0.1900	-7.21	1.000	11.26
150	214.2	102.8	0.1900	-7.21	1.000	12.20
180	230.1	86.9	0.1900	-7.21	1.000	11.26
210	226.1	90.9	0.1900	-7.21	1.000	11.51
240	223.4	93.6	0.1900	-7.21	1.000	11.67
270	249.2	67.8	0.1900	-7.21	1.000	10.04
300	245.6	71.4	0.1900	-7.21	1.000	10.29
330	290.0	27.0	0.1900	-7.21	1.000	6.62

Ave EI = 265.15 M HAAT= 51.85 M AMSL= 317 M

Contour.out

TERRAIN AND CONTOUR DATA

CANADIAN COMPLIANCE

GRANGER, WA K279AK 190 WATTS ERP

CALVARY CHAPEL OF TWIN FALLS, INC.

MARCH 2006

N. Lat. = 46 18 21 W. Lng. = 120 03 06

HAAT and Distance to Contour - FCC Method - 03 Arc Sec.

Azi .	AV EL	HAAT	ERP kW	dBk	Fi el d	34-F1
000	360.9	-43.9	0.1900	-7.21	1.000	32.39
030	340.4	-23.4	0.1900	-7.21	1.000	32.39
060	303.9	13.1	0.1900	-7.21	1.000	32.39
090	267.9	49.1	0.1900	-7.21	1.000	42.58
120	230.1	86.9	0.1900	-7.21	1.000	54.27
150	214.2	102.8	0.1900	-7.21	1.000	57.39
180	230.1	86.9	0.1900	-7.21	1.000	54.27
210	226.1	90.9	0.1900	-7.21	1.000	55.12
240	223.4	93.6	0.1900	-7.21	1.000	55.66
270	249.2	67.8	0.1900	-7.21	1.000	49.45
300	245.6	71.4	0.1900	-7.21	1.000	50.49
330	290.0	27.0	0.1900	-7.21	1.000	32.39

Ave EI = 265.15 M HAAT= 51.85 M AMSL= 317 M



Antenna Structure Registration

[FCC](#) > [WTB](#) > [ASR](#) > [Online Systems](#) > TOWAIR[FCC Site Map](#)

TOWAIR Determination Results

[? HELP](#)[New Search](#)[Printable Page](#)

A routine check of the coordinates, heights, and structure type you provided indicates that this structure does not require registration.

*** NOTICE ***

TOWAIR's findings are not definitive or binding, and we cannot guarantee that the data in TOWAIR are fully current and accurate. In some instances, TOWAIR may yield results that differ from application of the criteria set out in 47 C.F.R. Section 17.7 and 14 C.F.R. Section 77.13. A positive finding by TOWAIR recommending notification should be given considerable weight. On the other hand, a finding by TOWAIR recommending either for or against notification is not conclusive. It is the responsibility of each ASR participant to exercise due diligence to determine if it must coordinate its structure with the FAA. TOWAIR is only one tool designed to assist ASR participants in exercising this due diligence, and further investigation may be necessary to determine if FAA coordination is appropriate.

DETERMINATION Results

**PASS SLOPE(100:1): NO FAA REQ-RWY MORE THAN 10499 MTRS & 6294.72 MTRS
(6.29469 KM) AWAY**

Type	C/R	Latitude	Longitude	Name	Address	Lowest Elevation (m)	Runway Length (m)
AIRP	R	46-19-38.00N	119-58-38.00W	SUNNYSIDE MUNI	YAKIMA SUNNYSIDE, WA	227.1	1043.0

Your Specifications

NAD83 Coordinates

Latitude 46-18-20.4 north

Longitude 120-03-10.1 west

Measurements (Meters)

Overall Structure Height (AGL) 12

Support Structure Height (AGL) 12

Site Elevation (AMSL) 305

Structure Type

TOWER - Free standing or Guyed Structure used for Communications Purposes

[Tower Construction Notification](#)

Notify Tribes and Historic Preservation Officers of your plans to build a tower.

Note: Notification does NOT replace [Section 106 Consultation](#).

ASR Help[ASR License Glossary](#) - [FAQ](#) - [Online Help](#) - [Documentation](#) - [Technical Support](#)**ASR Online Systems**[TOWAIR](#) - [CORES](#) - [ASR Online Filing](#) - [Application Search](#) - [Registration Search](#)**About ASR**[Privacy Statement](#) - [About ASR](#) - [ASR Home](#)[FCC](#) | [Wireless](#) | [ULS](#) | [CORES](#)[Help](#) | [Tech Support](#)

Federal Communications Commission
445 12th Street SW
Washington, DC 20554

Phone: 1-888-CALL-FCC (1-888-225-5322)
TTY: 1-888-TELL-FCC (1-888-835-5322)
E-mail: fccinfo@fcc.gov