



## **ENGINEERING STATEMENT**

Concerning the Application of  
Vermont Public Radio  
To Construct a New FM Translator  
To Serve Brattleboro, Vermont  
Long Form – BNPFT20030317HKW

July 2003

**Channel 233D**

**0.01 kW ERP Omni**

This engineering statement supports the application filed by Vermont Public Radio to construct a new FM translator to serve Brattleboro, Vermont on Channel 233. The applicant proposes to correct the site coordinates, base elevation and antenna height above ground.

Page #2 is a map depicting the proposed 60 dBu contour of the proposed translator. Included on page #3 is a distance to 60 dBu contour table of the proposed facility.

Exhibit #12 is a computer generated channel study, defining the relationship between the proposed translator and adjacent stations. Page #2 is an explanation of the methods used in preparing the study. Page #3 is a map depicting the contour relationship between the proposed translator and third adjacent station, WRSI, Turners Falls, with Page #4 is the FMOVER table of the same stations.

Exhibit #16 is an R.F. emissions compliance statement.

Page #4 of this exhibit is a declaration made by the preparer, Kate Michler, attesting to her qualifications.

## Proposed Translator 60 dBu Coverage

### AP233

BNPFT20030317HKW

Latitude: 42-49-44 N

Longitude: 072-35-52 W

ERP: 0.01 kW

Channel: 233

Frequency: 94.5 MHz

AMSL Height: 307.0 m

Elevation: 261.591 m

Horiz. Pattern: Omni

Vert. Pattern: No

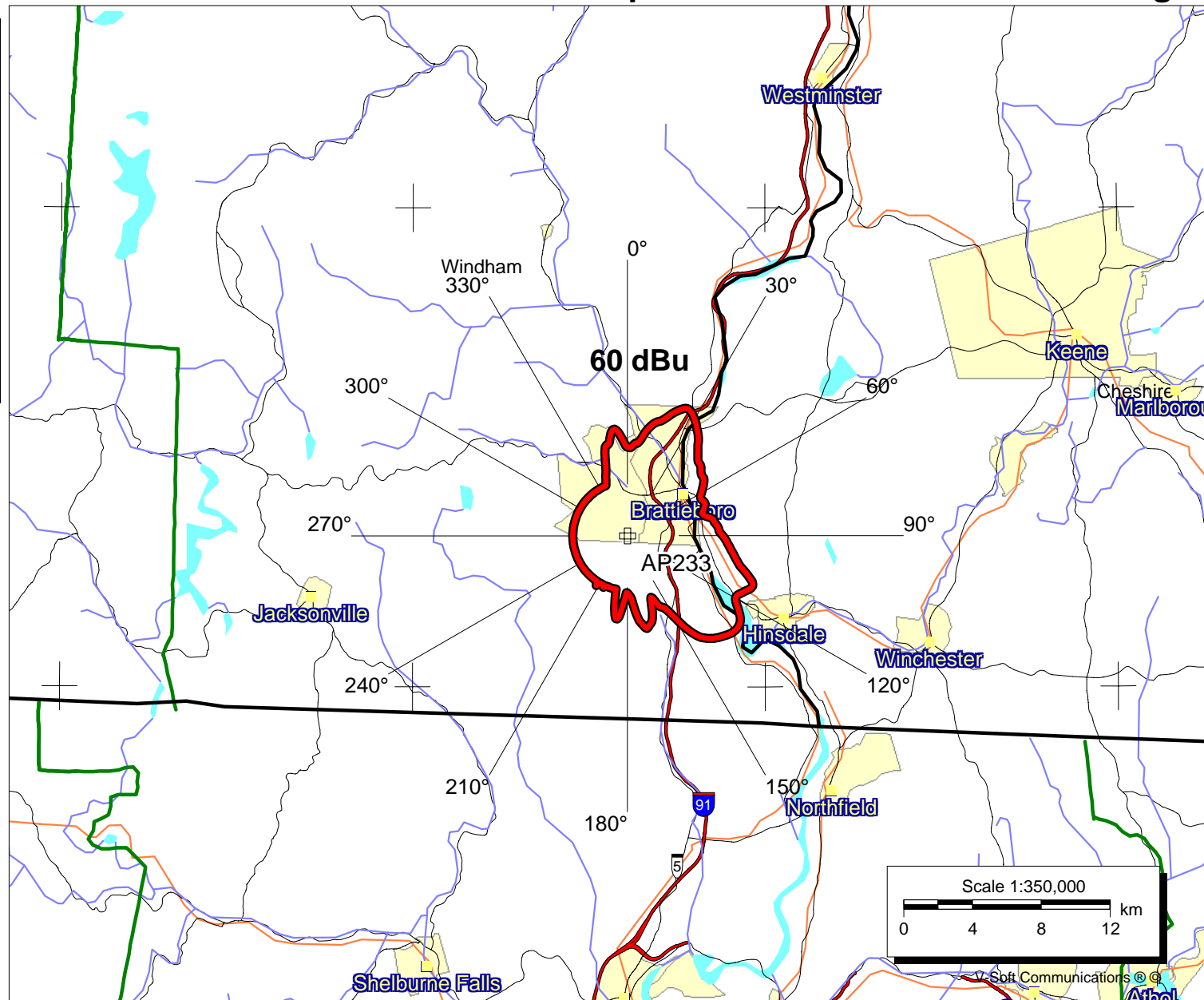
Prop Model: FCC Contour

Pop = 11,556

Area = 81.6 sq. km.

July 24, 2003

**V** Doug Vernier  
721 West 1st Street, Suite A  
Cedar Falls, Iowa 50613  
Telecommunications Consultants



Doug Vernier Telecommunications Consultants  
Long Form - BNPFT20030317HKW - Brattleboro, VT  
ERP = 0.01 kW  
Channel = 233

Azimuth Deg. T.	Ave. Elev. 3 to 16 km Meters AMSL	Effective Antenna Height Meters AAT	ERP (dBk)	F(50-50) Distance to 60 dBu Contour km
0	228.9	78.1	-20.000	5.14
30	126.1	180.9	-20.000	7.81
60	234.4	72.6	-20.000	4.95
90	217.1	89.9	-20.000	5.53
120	151.3	155.7	-20.000	7.23
150	220.2	86.8	-20.000	5.43
180	273.8	33.2	-20.000	3.31
210	278.9	28.1	-20.000	3.15
240	400.6	-93.6	-20.000	3.15
270	456.6	-149.6	-20.000	3.15
300	404.0	-97.0	-20.000	3.15
330	300.9	6.1	-20.000	3.15
Ave. = 274.4 M		32.6 M		

Antenna Radiation Center AMSL = 307 M  
NGDC 30 Arc Sec.

Geographic Coordinates:

N. Lat. 42 49 44  
W. Lng. 72 35 52

**Declaration:**

I, Katherine A. Michler, have received a Bachelor of Science degree from the University of Northern Iowa, and;

That, I declare that I have received training as a technical consultant as a member of the staff of Doug Vernier Telecommunications Consultants, and;

That, I have apprenticed under Douglas Vernier for over five years, and;

That, he has been active in broadcast consulting for over 25 years, and;

That, his qualifications are a matter of record with the Federal Communications Commission, and;

That, I am an Associate Member (#20792) of the Society of Broadcast Engineers, Indianapolis, Indiana, and;

That, the consulting firm of Doug Vernier Telecommunications Consultants has been retained by Vermont Public Radio, Colchester, Vermont;

That, I have personally prepared these engineering showings, the technical information contained in same and the facts stated within are true to my knowledge, and;

That, under penalty of perjury, I declare that the foregoing is correct.

Katherine A. Michler Katherine A. Michler

Executed on July 24, 2003

Subscribed and sworn before me this 24<sup>th</sup> day of July, 2003.

James D. Myers  
Notary Public in and for the State of Iowa

