

EXHIBIT 13

Waiver Request of Section 74.1204

W290AK Martinsville, VA

Minor IF Change to Channel 237

10 Watts ERP

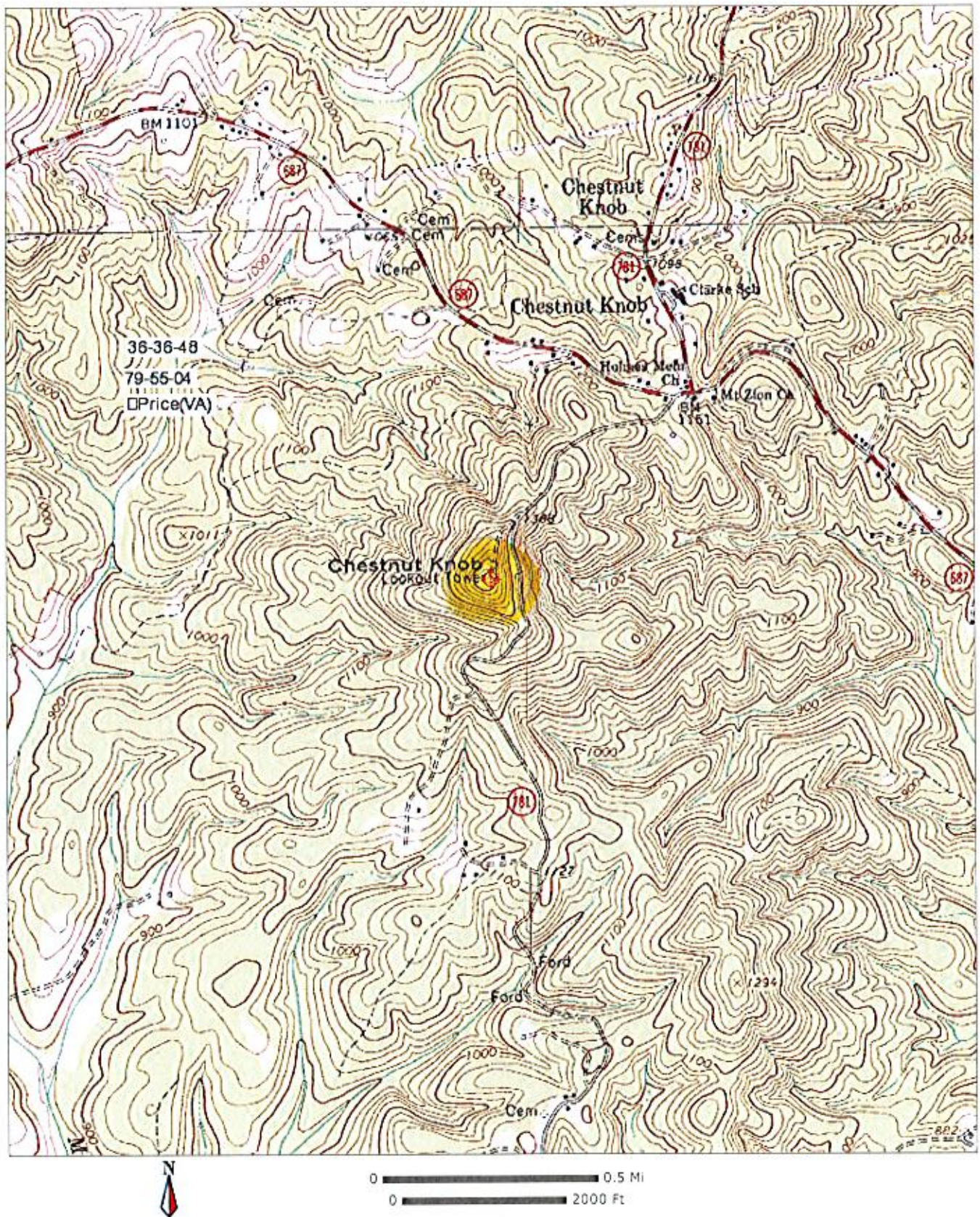
Calvary Chapel of Twin Falls, Inc.

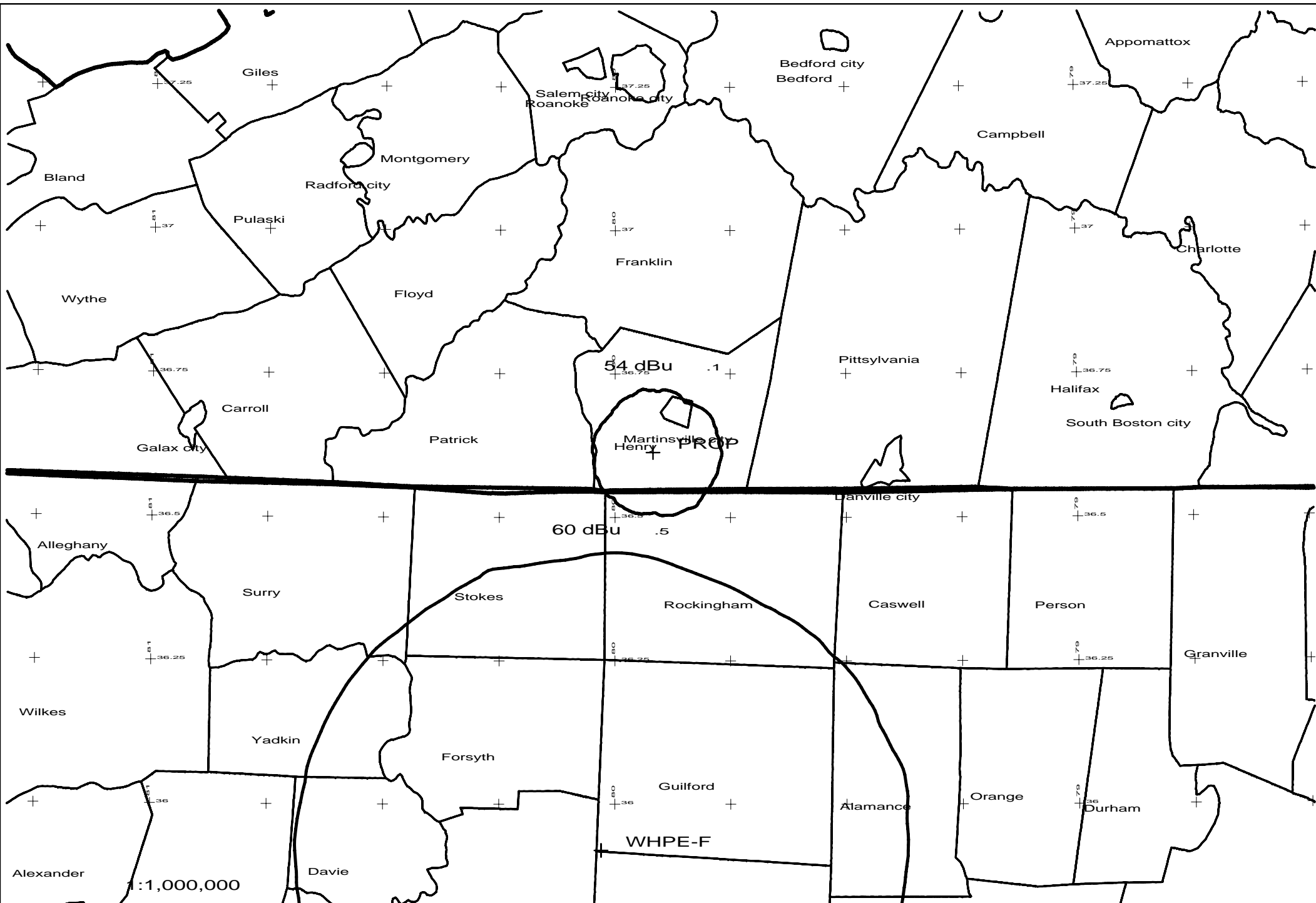
April 13, 2010

The proposed site is contained entirely inside the service contour of second-adjacent station WSCL-FM, Roanoke, VA

WSCL-FM

The proposed site is contained entirely inside the service contour of second-adjacent FM Station WSCL-FM, Channel 235, Class C, 98 & 100 kW, Roanoke, VA. The level of least arriving protected F(50,50) signal at the proposed transmitter site is 64.4-dBu. Using the Undesired-to-Desired method for calculating proposed interference, the interfering contour with respect to WSCL-FM is 104.4-dBu (free-space contour method employed). The interfering signal would, in the worst case at the maximum radial, extend 136 meters, or 446 feet, from the base of the tower. This tower is located in a sparsely populated area on Chestnut Knob. Attached is a section of the USGS Price (VA) Quadrangle, with a 500 foot interference area marked in yellow, which shows that this interfering contour does not cover residences, businesses or any major roadways. Calvary Chapel of Twin Falls, Inc. respectfully requests a waiver of the FM translator contour overlap regulations with respect to second-adjacent channel WSCL-FM.





PROP 237D .01kW 485M AMSL

N. Lat. 36 36 48 W. Lng. 79 55 04

WHPE

CCTF - 04/10