

# TV6 Calculation for Napeague, NY

TV6 Call sign  
WEDY

Fcc Search  
21.5 dBu

City  
New Haven

State  
CT

COR AMSL (m)  
132

HAAT(m)  
88

Latitude  
411942

Longitude  
725425

+

TV ERP (kW)  
0.400

FM Horizontal ERP  
4.6

☒ Outside City Of 50k

47

47

1

TV

FM

Plot Scale  
300

☒ DLG ☐ AJPI

☒ Hide Zeros ☒ TIGER

☐ Plot All Centroids

☒ Plot Inside Centroid Counts

☐ Plot All Centroid Counts

☒ Plot Contours

☐ Print All Centroids to -3 dBu

☐ Print Centroids

☒ Print TV Contour Table

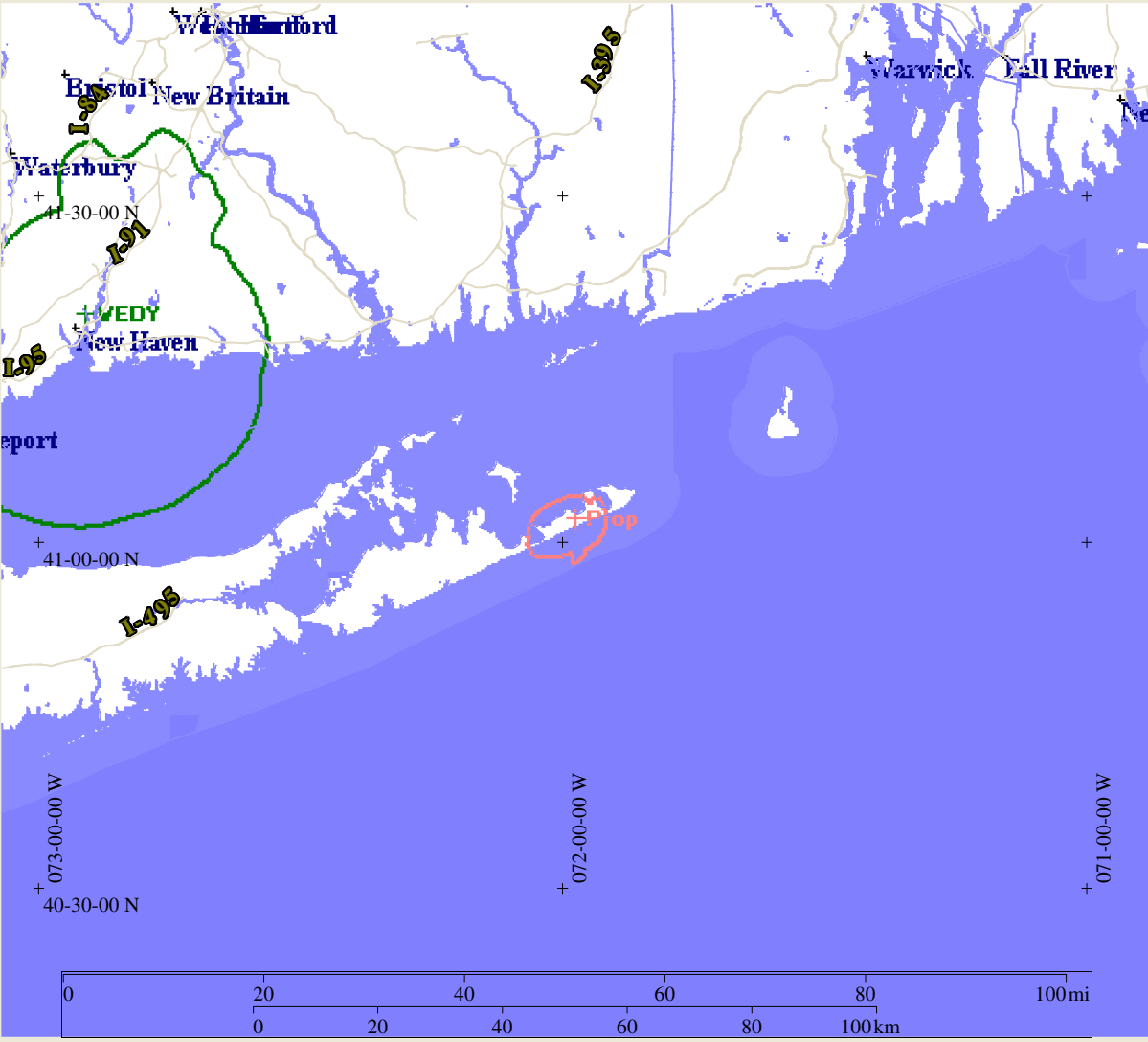
Comp 

Copy F

Copy I

PrintText

Print Form



Channel Six TV Protection Study

WEDY	06	0.400kW ERP	132.0M COR AMSL	88.0M HAAT	Lat. 411942	Lon. 725425
Prop	214	4.600kW ERP	81.0M COR AMSL	80.0M HAAT	Lat. 410156	Lon. 715830

Distance from TV to FM 84.8308km Azi 292.8degr Rev Azi 112.8 degr  
Cutoff radius for channel 214 is 187 km

The FM horizontal polarization component is 4.600 kW,  
and the area of just perceptible interference does not intersect a city of 50k,  
so the effective ERP is (Pv/40+Ph) 4.7150kW

The TV6 signal strength at the FM transmit site is 21.528 dBu  
For F centroids (centroids where the TV6 signal strength is less than 68 dBu and  
which are also +/-70 degrees from line from the FM station to the TV station)  
a 6 dB bonus is added to the allowable FM signal.

TV Contour	Undesired/Desired Ratio	Total	Directional Total
47	24.9	71.8	77.8

Population in affected area 0

2000 Block Centroids used