

COMMUNITY OF LICENSE CHANGE – SECTION 307(b) SHOWING

In accordance with the proposed change in the designated community of license of Station WJNS-FM from Yazoo City, MS to Bentonia, MS, Family Worship Center Church, Inc. ("FWCC") makes this showing to establish that the change in community of license is in the public interest under 47 U.S.C. §307(b) of the Communications Act and implementing rules and regulations of the FCC. Pursuant to Section 307(b), the Commission will authorize the relocation of a facility to another community when doing so will "provide a fair, efficient and equitable distribution of radio service." Relocating WJNS-FM from Yazoo City, MS to Bentonia, MS will further such goals by providing the first local transmission service to a thriving community.

The Engineering Statement included in this application, prepared by Jefferson G. Brock, Graham-Brock, Inc., sets forth the required technical component of FWCC's 307(b) showing. There are no full-power stations presently licensed to Bentonia, MS. For the reasons set forth herein, FWCC submits that Bentonia satisfies the precondition of being a licensable community under 307(b), and that grant of this application will result in the provision of first local service to Bentonia, MS, which would serve Priority 3 of the Commission's service priorities.¹

The Commission has defined a "community" as a geographically identifiable population grouping. *Oak Grove, Florida*, 5 FCC Rcd 3774 (1990). It is generally sufficient to demonstrate that the proposed community of license is incorporated or listed in the U.S. Census to confer community status. *Id.* Bentonia is listed as a "Town" by the U.S. Census. The Town of Bentonia, MS has a 2000 U.S. Census population of 500 and 501 as of 2005 Census update.²

Bentonia has its own government and an elected official. Bentonia has a Mayor, the Honorable Tommy Hancock. It has its own Police Department, Town Hall, and it also has its own Volunteer Fire Department.³

Bentonia has its own elementary school, the Bentonia Gibbs Elementary School. The town is also the home to Trinity Theological Seminary. The community is well served by nine churches and several community public service organizations such as Lions Club International and the NAACP.⁴

¹ The Commission's service priorities when making a 307(b) determination are: (1) first fulltime aural service, (2) second fulltime aural service, (3) first local service, and (4) other public interest matters. Co-equal weight is given to Priorities (2) and (3). *Revision of FM Assignment Policies and Procedures*, 90 FCC 2d 88, 101 (1982).

² See Attachment A, 2000 U.S. Census data for Bentonia, Mississippi.

³ See Attachment B, www.google.com (police); www.firedepartments.net (fire).

⁴ See Attachment C, www.switchboard.com (churches); www.google.com (schools); www.taxemptworld.com (civic organizations).

In addition to the public and community items set forth above, Bentonia is internationally famous for its musical scene. Specifically, Bentonia is the home to the "Bentonia School of Delta Blue". To celebrate this long musical history, a Blues Festival is held yearly in Bentonia at the historic Blue Front Café. Along with the musical school, Bentonia is home to outdoor sportsmen with the "Big Black River Wildlife Hunting Resort".⁵

As set forth in the Engineering Analysis, Bentonia is not located in any urbanized area, and as such, no Tuck showing is necessary (as described in *Faye & Richard Tuck, Inc. KBEC*, 3 FCC Rcd 5374, 5377 (1988)). For the foregoing reasons, FWCC respectfully submits that the proposed change in community of license will produce a *fair, efficient, and equitable* distribution of radio service and that this application should therefore be granted.

⁵ See Attachment D, www.wikipedia.org (history of Bentonia); See www.bentoniablues.com (Blues Festival); www.visitmississippi.org (hunting resort).

ATTACHMENT A



U.S. Census Bureau

American FactFinder

POPULATION FINDER

United States | Mississippi | **Bentonia town**

Bentonia town, Mississippi

The 2005 population estimate for Bentonia town, Mississippi is 501.

city/ town, county, or zip

bentonia

state

Mississippi

GO

search by address »

View population trends...

	2005	2000	1990
Population	501	500	390

Source: U.S. Census Bureau, 2005 Population Estimates, Census 2000, 1990 Census

View more results...


Population for all cities and towns in Mississippi, 2000:

alphabetic | ranked

Map of Persons per Square Mile, City/Town by Census Tract:

2000 | 1990

See more data for Bentonia town, Mississippi on the Fact Sheet and other links on the left.

The letters PDF or symbol  indicate a document is in the Portable Document Format (PDF). To view the file you will need the Adobe® Acrobat® Reader, which is available for **free** from the Adobe web site.

ATTACHMENT B

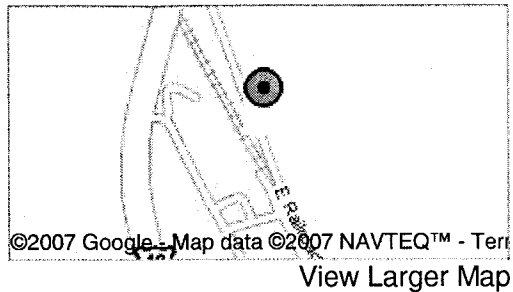
Bentonia Town Police Department

Placement on map is approximate

214 E Railroad Ave
Bentonia, MS 39040
(662) 755-2281

Get Directions: To here - From here

Add or edit your business



Local Governments | The Official State Web Site of Mississippi

Welcome to the Official State Web Site of Mississippi. This site ...

www.mississippi.gov/sub_sub_map.jsp?Category_ID=12&County_ID...

©2007 Google

Menu

[Home](#)
[Fire Departments](#)
[by County](#)
[Contact](#)
 Ads by Google

To find more fire departments in the region please use the following links:

[Bentonla Fire](#)
[Departments](#)

[Yazoo County Fire](#)
[Departments](#)

[Mississippi Fire](#)
[Departments](#)

Links

[Ads by Google](#)

Bentonla Volunteer Fire Department**Featured Depts**

[Hartselle Fire](#)
[Department](#)
 Mostly Volunteer Fire
 Dept

[DeSoto Fire Rescue](#)
 Career Fire Dept

[Norwood Fire](#)
[Company #2](#)
 Volunteer Fire Dept

[Macon Fire](#)
[Department](#)
 Volunteer Fire Dept

Physical Address:

212 E Railroad Ave
 Bentonla, MS 39040

"Rescue Me" New Season

Ready To Play With Fire? Season Premiere
 June 12th, 10/9c on FX!

Mailing Address:

Bentonla, MS 39040

Fire Employment Postings

North America's Leader in Verified Fire/EMS
 Jobs, Exams & Fire News!

Ads by Google

Fire Department Information

Type of Fire Department:	Volunteer
Department Run By:	Local
Number of Fire Stations:	1
Number of Career Firefighters:	0

Fire Dept. Dress Uniforms

High quality FD Dress Uniforms in a variety of styles, fabric, & color.

Fire Ringtone

Send this ringtone to your phone right now!
[RingRingMobile.com](#)

Ads by Google

Number of Volunteer Firefighters:	16
Number of Paid per Call Firefighters:	0
Non-Firefighting Employees:	0
Non-Firefighting Volunteers:	0

FirstResponse Financial

Financial services
 and rewards
 exclusively for first
 responders.

[www.firstresponders.com](#)

Copyright - [Fire Departments](#)

Menu

[Home](#)
[Fire Departments](#)
[by County](#)
[Contact](#)
[Ads by Google](#)

Featured Depts

[Tumwater Fire Department](#)
Mostly Career Fire Dept

[Lexington Fire Dept](#)
Volunteer Fire Dept

[Citizen's Hose Company](#)
Volunteer Fire Dept

[Blennerhassett Volunteer Fire Department](#)
Volunteer Fire Dept

Benton Fire Departments

Incident Command Boards

NIMS Compliant Accountability System
www.imsalliance.com

Fire Employment Postings

North America's Leader in Verified Fire/EMS
Jobs, Exams & Fire News!

[Ads by Google](#)

The following fire departments are located in Benton, Mississippi.
Please select a fire department in Benton to view the details.

[Benton Volunteer Fire Department](#)
212 E Railroad Ave
Benton, MS 39040

Mississippi Fire Departments

Links

[Ads by Google](#)

Fire Dept. Dress Uniforms

High quality FD
Dress Uniforms in a
variety of styles,
fabric, & color.
www.MarlowWhite.com

Get Firefighter Ringtones

10 Complimentary
Ringtones No
Credit Card
Required.
www.ReliableRingtones.co

Fire Ringtone

Send this ringtone
to your phone right
now!
RingRingMobile.com

Columbus Fire Dept.

Local Fire Dept. in
Columbus NE
Website, address,
maps & more.
Dexonline.com

Copyright - [Fire Departments](#)

ATTACHMENT C

TaxExemptWorld.com

1,543,838 Organizations - Assets: \$3,572,534,350,733 Income: \$2,721,528,743,332

[Home](#)
[Organization Search](#)
[Data Downloads](#)
[About](#)

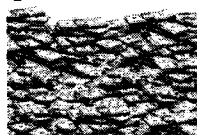
Data Updated on 05/14/2007



Non Profit Fundraising

Quick & Easy Profits. No Upfront Costs. Start Your Fundraiser Today!

www.Fundraising.Entertainment.com



Non Profit

Find The Top Non Profit. Fast & Easy

www.ProfitNon.info



Tax Exemption Attorneys

Legal, corporate & tax exemption services for nonprofits & charities

www.t-tlaw.com



Non Profit Debt Reduction

Non Profit Christian Debt Help. Cut Payments Up to 50%.

1-866-958-3328

www.ChristianDebtConsolidators.net

Ads by Google

Search

NonProfit

Organizations:

[Organizations by Name](#)

[Organizations by Zip Code](#)

[Organizations by City](#)

[Organizations by County](#)

[Organizations by State](#)

Tax Exempt/NonProfit Organization Search By Zip Code

Enter a Zip Code for a List of Tax Exempt/NonProfit Organizations:

(TIP: enter a five digit zip code)

Zip Code Profile	
Download Data Download the entire list of nonprofit/tax exempt organizations from Bentonla, MS 39040 to a Spreadsheet or Other File Type	
Location	Bentonla, MS 39040
Number of Tax Exempt/NonProfit Organizations in this Location	4
Total Income Amount from Tax Exempt/NonProfit Organizations in this Location	\$0
Total Asset Amount of Tax Exempt/NonProfit Organizations in this Location	\$0
Download Data Download the entire list of nonprofit/tax exempt organizations from Bentonla, MS 39040 to a Spreadsheet or Other File Type	

Ads by Google

Bookkeeping Course

Free video shows how to improve your skills.
Certify to earn more.

Know-Accounting.com

(* Reported Asset, Income, and Revenue Amounts are available with data download)

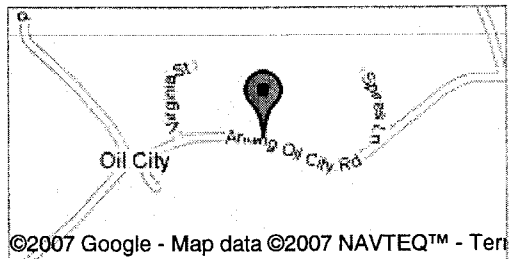
Organization Name	Address	Classification	Reported Asset Amount	Reported Income Amount	Form 990 Revenue Amount	Exempt Status As Of Date
<u>HILLCREST COMMUNITY DEVELOPMENT INC</u> (c/o MELVIN L LOGAN)	3065 SCOTLAND RD BENTONIA, MS 39040-9333	Charitable Organization	*	*	*	03/1994
<u>INTERNATIONAL ASSOCIATION OF LIONS CLUBS</u> (c/o JACK KIRK JR)	PO BOX 295 BENTONIA, MS 39040-0295	Social Welfare Organization	*	*	*	03/1966
<u>NATIONAL ASSOCIATION FOR THE ADVANCEMENT OF COLORED PEOPLE</u> (c/o REV CURTIS STRONG)	2519 OLD HIGHWAY 49 BENTONIA, MS 39040-8421	Civic League	*	*	*	11/1961
<u>THE BENTONIA PROGRESSIVE INC</u> (c/o LUCIOUS TURNER)	PO BOX 398 BENTONIA, MS 39040-0398	Charitable Organization (Community, Neighborhood Development, Improvement (General))	*	*	*	07/2006

(* Reported Asset, Income, and Revenue Amounts are available with data download)

Trinity Theological Seminary

5215 Anding Oil City Rd
Bentonia, MS 39040
(662) 755-0040

Get Directions: To here - From here
Add or edit your business



[View Larger Map](#)

Colleges & Universities in Holly Bluff, MS - AOL Yellow Pages

Sponsored Links. What's this? ...

yellowpages.aol.com/.../ms/holly-bluff/

Colleges & Universities in Mississippi (MS) - AOL Yellow Pages

yellowpages.aol.com/.../colleges-and-universities/ms/

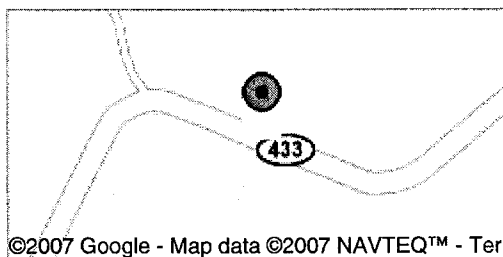
[[More results from yellowpages.aol.com](#)]

©2007 Google

Bentonia Gibbs Elementary

Placement on map is approximate
10340 Highway 433 W
Bentonia, MS 39040
(662) 755-2270

Get Directions: To here - From here
Add or edit your business



[View Larger Map](#)

Bentonia Gibbs School - Bentonia, Mississippi - MS - school overview

... Elementary **Schools** Near Bentonia Gibbs School. JavaScript is required in order to view a map of the city and its **schools**. Elementary School. GreatSchools Rating ...
www.greatschools.net/modperl/browse_school/ms/1014

Yazoo County School District **Schools**

GreatSchools: The Parents' Guide to K-12 Success ...

www.greatschools.net/schools.page?district=163&state=MS

[More results from www.greatschools.net]

Click4Kids.com: BENTONIA GIBBS SCHOOL Healthy Fundraising Made Easy!

... bentonia, bentonia, gibbs, school, elementary/secondary, public, primary, ms, mississippi, (662) 755-2270, 39040, pto pta school fundraiser fund raiser easy fundraising elementary school middle grades high **schools** lesson plans learning ...
www.click4kids.com/school/bentonia_gibbs_school

39040 Zip Code Detailed Profile - residents and real estate info

... National Pollutant Discharge Elimination System NON-MAJOR (Tracking pollutant discharge elimination systems) - permit Business SIC classification: ELEMENTARY AND SECONDARY **SCHOOLS** Alternative names: GIBBS ELEMENTARY SCHOOL

...

www.city-data.com/zip/39040.html

EPA - Envirofacts Warehouse - FII

... Data Source, SIC Code, Description, Primary. MS-ENSITE, 8211, ELEMENTARY AND SECONDARY **SCHOOLS**. PCS, 8211, ELEMENTARY AND SECONDARY **SCHOOLS** ...

oaspub.epa.gov/enviro/fii_query_dtl.disp_program_facility?pg...

EPA - Envirofacts Warehouse - PCS

... MS0030406, View Facility Information, YAZOO COUNTY SCHOOL DISTRICT, BENTONIA GIBBS SCHOOL, 10340 HIGHWAY 433 WEST BENTONIA, MS 39040, YAZOO, SEP-04-2003, AUG-31-2008, 8211, ELEMENTARY AND SECONDARY **SCHOOLS**, MAP, 08060201 ...

oaspub.epa.gov/enviro/fii_master.fii_retrieve?postal_code=39...

[More results from oaspub.epa.gov]

Mississippi Teacher Exchange Web Site

... "When it comes to technology in education, you can create it, you can design it, you can produce it. 2000 - 2001 Mississippi Exemplary Teacher Profiles - AE FM NZ. 7 & 8 Language Arts **Bentonia Gibbs Elementary** Yazoo County School District ...
teacherexchange.mde.k12.ms.us/new/mentors/exemp.htm

ATTACHMENT D

Bentonla, Mississippi

Coordinates: 32.643889° -90.368121°

From Wikipedia, the free encyclopedia
(Redirected from Bentonla, MS)

Bentonla is a town in Yazoo County, Mississippi, United States. The population was 500 at the 2000 census. Some blues scholars maintain that there is a "Bentonla School" of blues singing and guitar-playing, and that "Bentonla-style" is a distinct style of Delta Blues, but Bentonla lies outside the Mississippi Delta proper.

Contents

- 1 Geography
- 2 Demographics
- 3 Education
- 4 Films
- 5 External links

Geography

Bentonla is located at 32°38'38"N, 90°22'5"W (32.643889, -90.368121)^{GR1}.

According to the United States Census Bureau, the town has a total area of 3.5 km² (1.4 mi²), all land.

Demographics

As of the census^{GR2} of 2000, there were 500 people, 203 households, and 130 families residing in the town. The population density was 140.9/km² (366.0/mi²). There were 214 housing units at an average density of 60.3/km² (156.6/mi²). The racial makeup of the town was 62.80% White, 35.80% African American, 0.20% Asian, 0.20% from other races, and 1.00% from two or more races. Hispanic or Latino of any race were 0.40% of the population.

There were 203 households out of which 29.6% had children under the age of 18 living with them, 38.9% were married couples living together, 21.7% had a female householder with no husband present, and 35.5% were non-families. 33.5% of all households were made up of individuals and 16.3% had someone living alone who was 65 years of age or older. The average household size was 2.46 and the average family size was 3.15.

In the town the population was spread out with 25.2% under the age of 18, 7.8% from 18 to 24, 25.6% from 25 to 44, 23.8% from 45 to 64, and 17.6% who were 65 years of age or older. The median age was 40 years. For every 100 females there were 79.9 males. For every 100 females age 18 and over, there were 76.4 males.

The median income for a household in the town was \$21,458, and the median income for a family was \$39,583. Males had a median income of \$28,000 versus \$26,875 for females. The per capita income for the town was \$12,440. About 23.3% of families and 27.4% of the population were below the poverty line, including 36.5% of those under age 18 and 22.2% of those age 65 or over.

Education

The Town of Bentonla is served by the Yazoo County School District.

Films

- *Deep Blues* (1991). Directed by Robert Mugge.

External links

- **Maps and aerial photos**

(http://tools.wikimedia.de/~magnus/geo/geohack.php?params=32.643889_N_-90.368121_E_type:city_region:US)

- Street map from Google Maps (<http://maps.google.com/maps?ll=32.643889,-90.368121&spn=0.11,0.18>) , or Yahoo! Maps (http://maps.yahoo.com/maps_result?lat=32.643889&lon=-90.368121&mag=4) , or Windows Live Local (<http://local.live.com/default.aspx?cp=32.643889|-90.368121&style=r&lvl=13&v=1>)
- Satellite image from Google Maps (<http://maps.google.com/maps?ll=32.643889,-90.368121&spn=0.11,0.18&t=h>) , Windows Live Local (<http://local.live.com/default.aspx?cp=32.643889|-90.368121&style=h&lvl=13&v=1>) , WikiMapia (<http://www.wikimapia.org/maps?ll=32.643889,-90.368121&spn=0.11,0.18&t=h>)
- Topographic map from TopoZone (<http://topozone.com/map.asp?lat=32.643889&lon=-90.368121&s=200&size=m&layer=DRG100&datum=nad83>)
- Aerial image or topographic map from TerraServer-USA (<http://terraserver-usa.com/image.aspx?s=14&lon=-90.368121&lat=32.643889&w=2>)

Retrieved from "http://en.wikipedia.org/wiki/Benton%2C_Mississippi"

Categories: Towns in Mississippi | Yazoo County, Mississippi

- This page was last modified 09:52, 23 February 2007.
- All text is available under the terms of the GNU Free Documentation License. (See **Copyrights** for details.) Wikipedia® is a registered trademark of the Wikimedia Foundation, Inc., a US-registered 501(c)(3) tax-deductible nonprofit charity.

UPDATED

Fri., May. 25, 2007



photo by Dick Waterman

- About Us
- Events
- Bentonia Blues Festival™
- Bentonia Blues Society™
- Photo Galleries
- **Go Shopping**
- Links
- Contact Us

| HOME |

"Anything Bentonia Blues™" "It's the Real Deal!™"

Welcome to bentoniablues.com!

"It's the Real Deal!™" (Click menu items on left.)

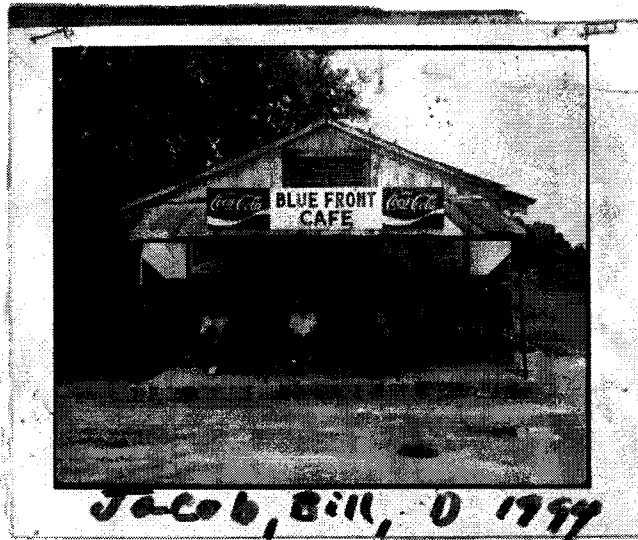


photo by James Fraher

BBQ & Blues at the Historic Blue Front Café

Thursday nights, 7-11 pm

\$10 Admission – Food & Music FREE!

Due to cost for musicians, admission has been raised to \$15 per person.

Price includes food and entertainment for the evening.

by Reservation Only (Wednesday, noon, or earlier)

Call 662-755-2278, 755-8585 or 755-2160

(the previous Wednesday by noon or before) for Reservations.

Bentonia, Mississippi: where the Bentonia School of Delta Blues originated and location of the world famous Blue Front Café...

Site Maintained By Neidigh Hybrid Walnut, P.O. Box 403, Bentonia, MS 39040

Revised: May. 25, 2007

UPDATED

Fri., May. 25, 2007



photo by Dick Waterman

- About Us
- Events
- Bentonia Blues Festival™
- Bentonia Blues Society™
- Photo Galleries
- Go Shopping
- Links
- Contact Us

| HOME |

"Anything Bentonia Blues™" "It's the Real Deal!™"

The Official Bentonia Blues Festival™ Webpage

**IMPORTANT NOTICE - Always the 3rd Saturday of June, the 2007
Bentonia Blues Festival™ will be Saturday, June 16th, 2007.**

The 35th Annual Bentonia Blues Festival™ in downtown Bentonia, Mississippi, will be held Sat., Jun. 16, 2007, from 12 noon-'til. Schedule, performers and times will always be announced here first.

2007 Bentonia Blues Festival™ Lineup

By JOHN L. NEIDIGH 25-May-2007

The Bentonia Blues Competition™ has been cancelled, however, interested blues artists are welcome to participate on the Blue Front Café Juke Joint Stage before the Main Blues Stage opens.

The Main Blues Stage performers are (lineup and times are subject

to change):

Otha Holmes	2:00 pm
Jumpshot & René	2:30 pm
T. Model Ford	3:00 pm
Howlin' Mad	3:30 pm
19 th Street Red	4:00 pm
Terry	5:00 pm
"Harmonica" Ben	
Aaron "Baby Bell" Bell	5:30 pm
Jimmy "Duck" Holmes	6:00 pm
BLUES JAM SESSION	7-8 pm
Roosevelt Roberts, Jr.	8:00 pm

The Blue Front Juke Joint Stage opens at 12 noon, the Main Blues Stage opens at 2 pm and the Gospel Stage opens at 12 noon. For more info, contact Jimmy "Duck" Holmes at 662-755-2278, 662-528-1900 or 662-755-8585.

Site Maintained By Neidigh Hybrid Walnut, P.O. Box 403, Bentonia, MS 39040

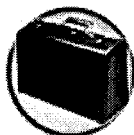
Revised: May. 25, 2007



Accommodations and Attractions Casinos Events Food Golf Culture/Heritage Music Outdoors
Meeting Planners Travel Agents Press/News Film Office Group Travel International Retirement

Home > Trip Planner

Trip Planner



Welcome to the **Trip Planner**. Click [here](#) to be taken to the trip planner information below. Here you can keep track of all the unique and exciting events and activities you discover on this site. Whether you are looking for a few nights of excitement in a casino, a round of golf on some the nation's most challenging golf courses or just a taste of Southern heritage, hospitality and culture you can find it here. When you find something that interests you, just click the icon and we will add it to your personal **Trip Planner**. You can also print your Trip Planner and have a custom itinerary for your

Mississippi getaway.



[Continue planning your trip](#)

[Clear Trip Planner](#)

Big Black River Wildlife Hunting Resort

Deer, duck, and quail guided hunts on 5000+ acres on Big Black River; 2600 sq. ft. lodge with meals, transportation from airport or Amtrak.



Sports	Hunting
Game	Deer, quail, waterfowl
Location	Benton Benton, MS Yazoo County Driving Directions
Mailing	P.O. Box 238 Benton, MS 39040
Phone	601.755.0029
Fax	
Toll-Free	
Website	
Email	mailto:bir@tecinfo.com

ATTENTION TRAVELERS:

Mississippi's Gulf Coast is bouncing back from the impact of Hurricane Katrina and many of the attractions visitors have come to enjoy-including world-class golf courses, casino gaming and outdoor recreational activities such as sport fishing-are open for business. For the latest information on accommodations, restaurants, attractions, and events, please check our website www.VisitMississippi.org. Also, be sure to visit the websites of local tourism organizations on the Gulf Coast, including the [Mississippi Gulf Coast Convention and Visitors Bureau](#), the [Hancock County Tourism Development Bureau](#), the [Jackson County Chamber of Commerce](#) and the [Ocean Springs Chamber of Commerce](#).

Thank you for your interest in Mississippi.

Order A Vacation Guide Featured Events Book Your Travel
Contact Us Privacy Site Map Convention and Visitors Bureaus

