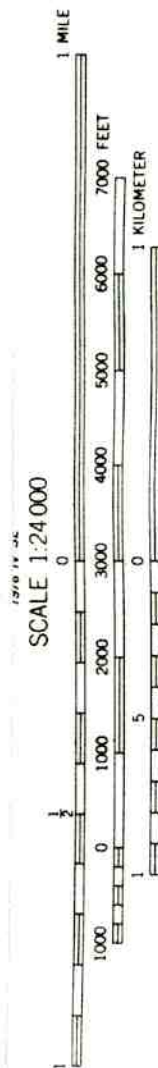
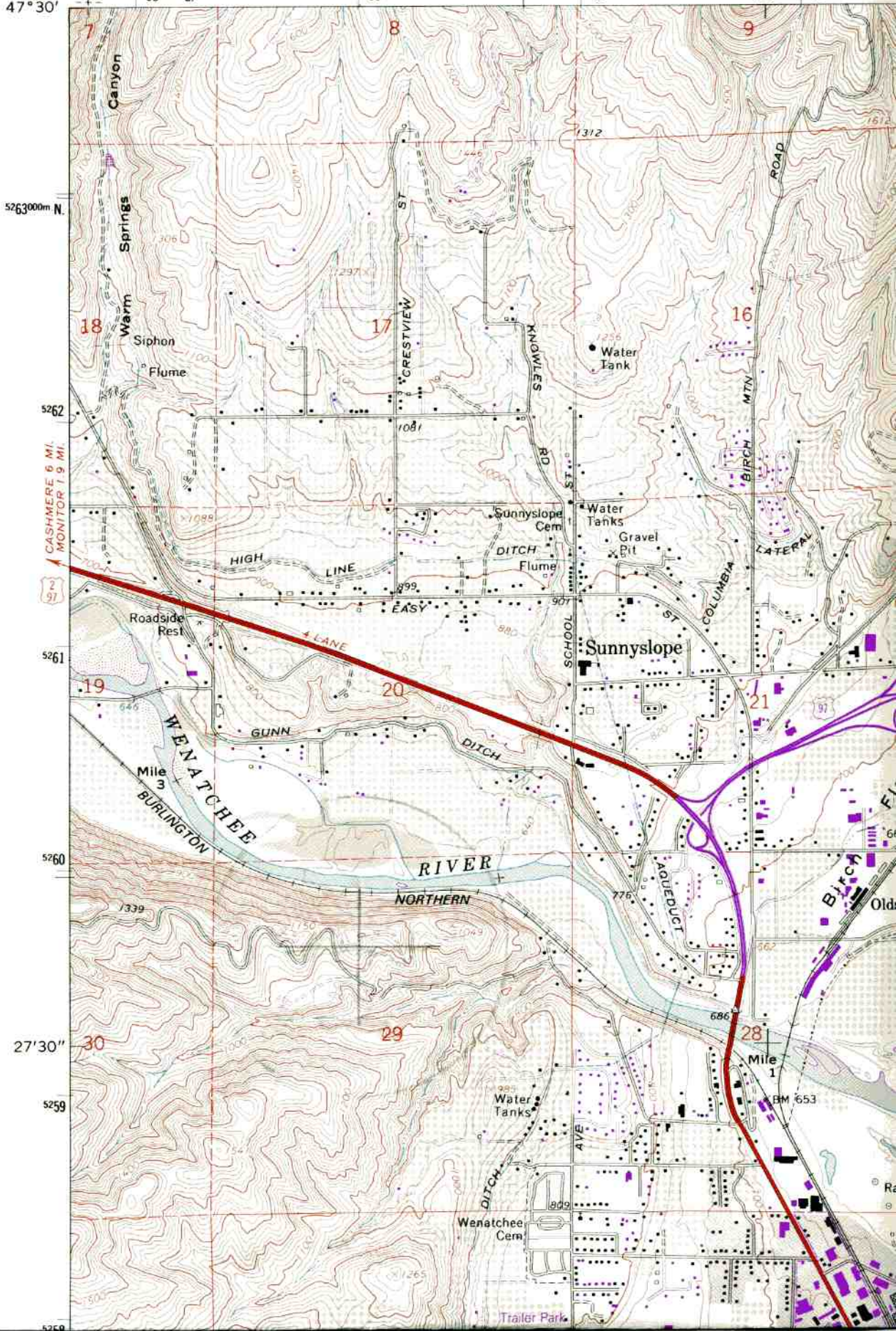


1929 III SW  
(CASHMERE)

UNITED STATES  
DEPARTMENT OF THE INTERIOR  
GEOLOGICAL SURVEY

EXHIBIT 12 - TOPO MAP  
Calvary Chapel of Twin Falls, Inc.  
K207CS, Wenatchee, WA  
Wenatchee, WA

120°22'30" 698000m E. 699 700 20' 701  
47°30'



CONTOUR INTERVAL 20 FEET  
NATIONAL GEODETIC VERTICAL DATUM OF 1929