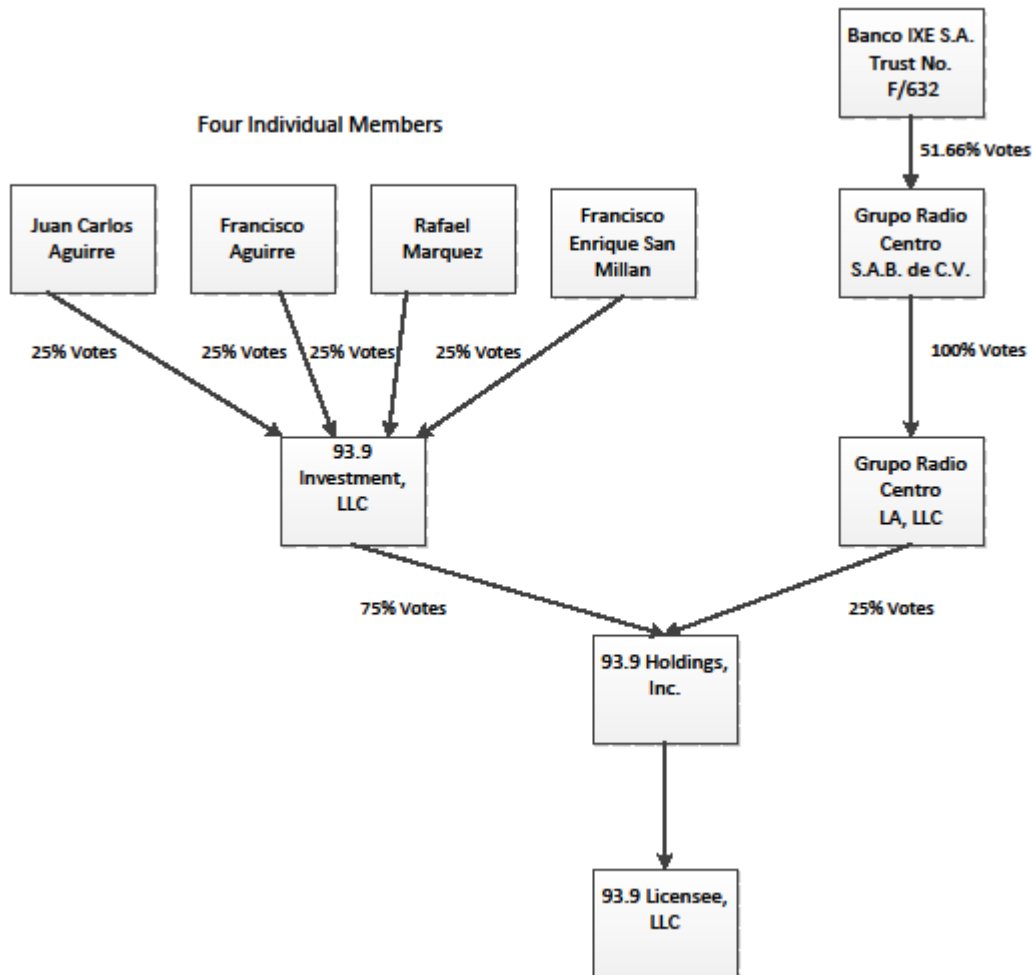


Exhibit No. 13
Ownership

The Assignee, 93.9 License, LLC, is a single member Delaware limited liability company wholly owned by a Delaware corporation, 93.9 Holdings, Inc. 93.9 Holdings, Inc. is currently controlled by its four directors, Juan Carlos Aguirre, Francisco Aguirre, Rafael Marquez, and Francisco San Millan and will be (at the time of the proposed assignment) controlled by 93.9 Investment, LLC, which will be wholly-owned by Juan Carlos Aguirre, Francisco Aguirre, Rafael Marquez, and Francisco San Millan.

At closing on the proposed assignment Grupo Radio Centro, LA, LLC, a Delaware limited liability will own a minority share [twenty-five (25%) percent] in 93.9 Holdings, Inc. Grupo Radio Centro LA, LLC is wholly owned by Grupo Radio Centro S.A.B. de C.V., a Mexican public corporation. Grupo Radio Centro S.A.B. de C.V. is controlled by Banco IXE S.A. Trust No. F/632 which holds 51.66% of its voting shares.

The following chart depicts the proposed ownership of assignee at the time of closing::



Assignee submits the following information in response to FCC Form 314, Section III, Question 4(a):

Respondent No. 1 - 93.9 License, LLC

1	2	3	4	5
93.9 License LLC c/o Leibowitz & Associates 4400 Biscayne Blvd., #880 Miami, FL 33137	U.S.	Assignee (Respondent #1)	0.00%	100.00%
93.9 Holdings, Inc. c/o Leibowitz & Associates 4400 Biscayne Blvd., #880 Miami, FL 33137	U.S.	Sole Member of Assignee	100.00%	100.00%

Respondent No. 2 - 93.9 Holdings, Inc.

1	2	3	4	5
93.9 Holdings, Inc. c/o Leibowitz & Associates 4400 Biscayne Blvd., #880 Miami, FL 33137	U.S.	Respondent #2	0.00%	100.00%
93.9 Investment, LLC c/o Leibowitz & Associates 4400 Biscayne Blvd., #880 Miami, FL 33137	U.S.	Majority Shareholder of Respondent #2	75.00%	0.88%
Grupo Radio Centro L.A. LLC 2600 West Olive Ave., #850 Burbank, CA 91505	U.S.	Minority Shareholder of Respondent #2	25.00%	0.29%
Juan Carlos Aguirre 2619 Joseph St. New Orleans, LA 70115-7039	U.S.	Treasurer and Director of Respondent #2	0.00%	0.00%
Francisco Enrique San Millan 2219 Del Valle Way Yuma, Arizona 85364	U.S.	Vice President and Director of Respondent #2	0.00%	0.00%
Francisco Aguirre 15 Greenway Plaza #26J Houston, TX 77046	U.S.	President and Director of Respondent #2	0.00%	0.00%
Rafael Marquez 6 Black Spruce Ct. The Woodlands, TX 77389	U.S.	Secretary and Director of Respondent #2	0.00%	0.00%

Respondent No. 3 - 93.9 Investment, LLC

1	2	3	4	5
93.9 Investment, LLC c/o Leibowitz & Associates 4400 Biscayne Blvd., #880 Miami, FL 33137	U.S.	Respondent #3	0.00%	100.00%
Juan Carlos Aguirre 2619 Joseph St. New Orleans, LA 70115-7039	U.S.	Member of Respondent #3	25.00%	25.00%
Francisco Enrique San Millan 2219 Del Valle Way Yuma, Arizona 85364	U.S.	Member of Respondent #3	25.00%	25.00%
Francisco Aguirre 15 Greenway Plaza #26J Houston, TX 77046	U.S.	Member of Respondent #3	25.00%	25.00%
Rafael Marquez 6 Black Spruce Ct. The Woodlands, TX 77389	U.S.	Member of Respondent #3	25.00%	25.00%

Respondent No. 4 - Grupo Radio Centro LA, LLC

1	2	3	4	5
Grupo Radio Centro L.A. LLC 2600 West Olive Ave., #850 Burbank, CA 91505	U.S.	Respondent #4	0.00%	100.00%
Grupo Radio Centro S.A.B. de C.V. Av. Constituyentes No. 1154 Piso Col. Lomas Altas 11950 Mexico D.F. 5728	Mexico	Sole Member of Respondent #4	100.00%	100.00%

Respondent No. 5 - Grupo Radio Centro S.A.B. de C.V.

1	2	3	4	5
Grupo Radio Centro S.A.B. de C.V. Av. Constituyentes No. 1154 Piso 7 Col. Lomas Altas 11950 Mexico D.F. 5728	Mexico	Respondent #5	0.00%	100.00%
Francisco Aguirre Gomez Av. Constituyentes 1154 Piso 7 Colonia Lomas Altas, Ciudad de México, D.F. - CP 11950	Mexico	Director, Chairman of Respondent #5	0.00%	0.00%
Maria Esther Aguirre Gomez Av. Constituyentes 1154 Piso 7 Colonia Lomas Altas, Ciudad de México, D.F. - CP 11950	Mexico	Director, First Vice Chairperson of Respondent #5	0.00%	0.00%
Maria Adriana Aguirre Gomez Av. Constituyentes 1154 Piso 7 Colonia Lomas Altas, Ciudad de México, D.F. - CP 11950	Mexico	Director, Second Vice Chairperson of Respondent #5	0.00%	0.00%
Ana Maria Aguirre Gomez Av. Constituyentes 1154 Piso 7 Colonia Lomas Altas, Ciudad de México, D.F. - CP 11950	Mexico	Director of Respondent #5	Less than 1.00% ⁱ	Less than 1.00%
Carlos Aguirre Gomez Av. Constituyentes 1154 Piso 7 Colonia Lomas Altas, Ciudad de México, D.F. - CP 11950	Mexico	Director, CEO of Respondent #5	Less than 1.00%	Less than 1.00%
Rafael Aguirre Gomez Av. Constituyentes 1154 Piso 7 Colonia Lomas Altas, Ciudad de México, D.F. - CP 11950	Mexico	Director of Respondent #5	0.00%	0.00%
Jose Manuel Aguirre Gomez Av. Constituyentes 1154 Piso 7 Colonia Lomas Altas, Ciudad de México, D.F. - CP 11950 z	Mexico		0.00%	0.00%
Pedro Beltran Nasr Av. Constituyentes 1154 Piso 7 Colonia Lomas Altas, Ciudad de México, D.F. - CP 11950	Mexico	Director, Financial Administrative Director, CFO of Respondent #5	0.00%	0.00%

Luis Alfonso Cervantes Muñiz. Av. Constituyentes 1154 Piso 7 Colonia Lomas Altas, Ciudad de México, D.F. - CP 11950	Mexico	Director of Respondent #5	0.00%	0.00%
Gustavo Gabriel Llamas Monjardin Av. Constituyentes 1154 Piso 7 Colonia Lomas Altas, Ciudad de México, D.F. - CP 11950	Mexico	Director of Respondent #5	0.00%	0.00%
Luis Manuel de la Fuente Baca Av. Constituyentes 1154 Piso 7 Colonia Lomas Altas, Ciudad de México, D.F. - CP 11950	Mexico	Director of Respondent #5	0.00%	0.00%
Fausto Garcia Lopez Av. Constituyentes 1154 Piso 7 Colonia Lomas Altas, Ciudad de México, D.F. - CP 11950	Mexico	Director of Respondent #5	0.00%	0.00%
Trust Administered by Banco IXE S.A. Torre Banorte Santa Fe - Prolongación Reforma 1230 Col. Cruz Manca, Santa Fe CP 05349. Atención del Sr. Jonatan Cario Trejo	Mexico	Majority Shareholder of Respondent #5	51.66%	51.66%

Respondent No. 6 - Banco IXE S.A. Trust No. F/632

1	2	3	4	5
Banco IXE S.A. Trust No. F/632 Torre Banorte Santa Fe - Prolongación Reforma 1230 Col. Cruz Manca, Santa Fe CP 05349. Atención del Sr. Jonatan Cario Trejo	Mexico	Respondent #6	0.00%	100.00%
Banco IXE S.A. Torre Banorte Santa Fe - Prolongación Reforma 1230 Col. Cruz Manca, Santa Fe CP 05349. Atención del Sr. Jonatan Cario Trejo	Mexico	Trustee Respondent #6	100.00%	100.00%
Maria Esther Aguirre Gomez Av. Constituyentes 1154 Piso 7 Colonia Lomas	Mexico	Beneficiary and Technical Committee Member of	14.28%	14.28%

Altas, Ciudad de México, D.F. - CP 11950		Respondent #6		
Francisco Aguirre Gomez Av. Constituyentes 1154 Piso 7 Colonia Lomas Altas, Ciudad de México, D.F. - CP 11950	Mexico	Beneficiary and Technical Committee Member of Respondent #6	14.28%	14.28%
Maria Adriana Aguirre Gomez Av. Constituyentes 1154 Piso 7 Colonia Lomas Altas, Ciudad de México, D.F. - CP 11950	Mexico	Beneficiary and Technical Committee Member of Respondent #6	14.28%	14.28%
Ana Maria Aguirre Gomez Av. Constituyentes 1154 Piso 7 Colonia Lomas Altas, Ciudad de México, D.F. - CP 11950	Mexico	Beneficiary and Technical Committee Member of Respondent #6	14.28%	14.28%
Carlos Aguirre Gomez Av. Constituyentes 1154 Piso 7 Colonia Lomas Altas, Ciudad de México, D.F. - CP 11950	Mexico	Beneficiary and Technical Committee Member of Respondent #6	14.28%	14.28%
Rafael Aguirre Gomez Av. Constituyentes 1154 Piso 7 Colonia Lomas Altas, Ciudad de México, D.F. - CP 11950	Mexico	Beneficiary and Technical Committee Member of Respondent #6	14.28%	14.28%
Jose Manuel Aguirre Gomez Av. Constituyentes 1154 Piso 7 Colonia Lomas Altas, Ciudad de México, D.F. - CP 11950	Mexico	Beneficiary and Technical Committee Member of Respondent #6	14.28%	14.28%

ⁱ 51.6% of the voting equity in Grupo Radio Centro S.A.B. de C.V. is controlled by a Mexican Trust administered by Bank IXE, S.A. The beneficiaries of this Trust are Maria Esther Aguirre G., Francisco Aguirre G., Maria Adriana Aguirre G., Ana Maria Aguirre G., Carlos Aguirre G., Rafael Aguirre G. and Jose Manuel Aguirre G. Each beneficiary of the Trust is a member of the Trust's technical committee and each has an equal vote in directing the voting of the Trust's shares of Grupo Radio Centro S.A.B. de C.V.