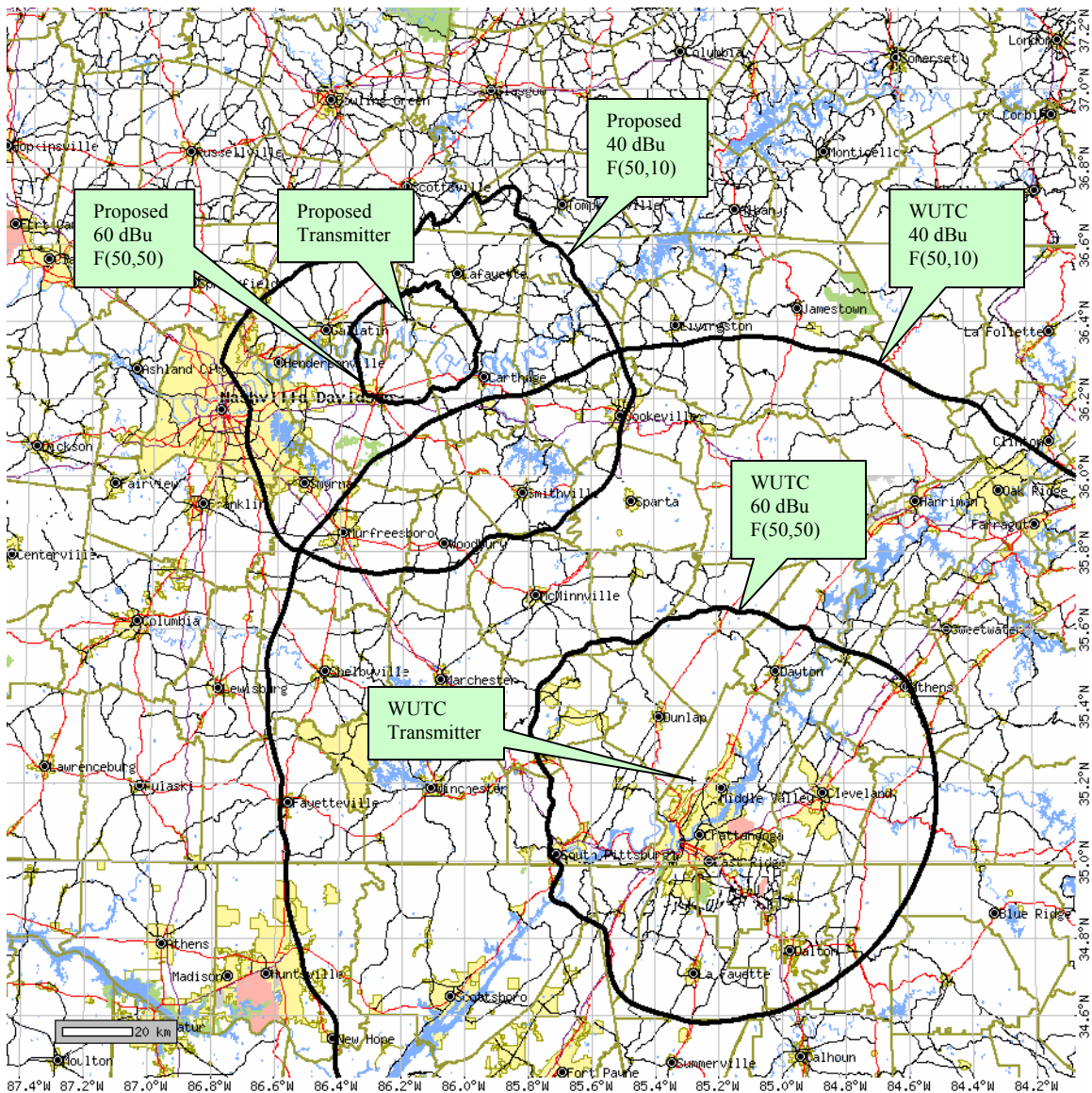


**EXHIBIT 16**  
**§73.509 CONTOUR PROTECTION**

This exhibit addresses the contour protection requirements of §73.509. No prohibited overlap exists between the contours of the proposed facilities and those of existing reserved band NCE assignments or applications.

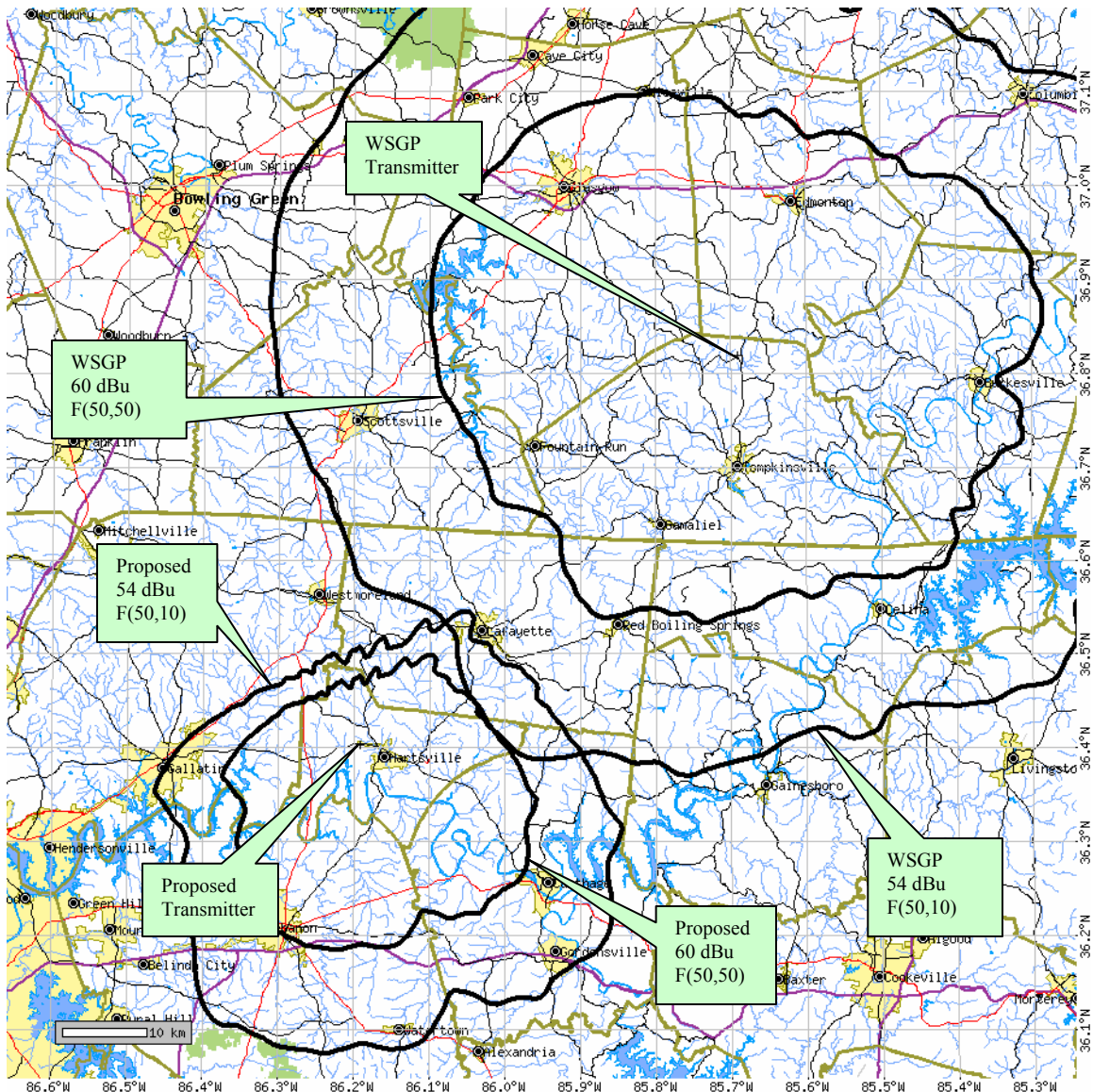
Relevant contour plots were generated by computer using the methods specified in §73.313. Antenna height above average terrain was computed using the standard eight-radial method specified in §73.313(d). Average terrain along additional azimuths was computed and used in conjunction with the F(50,50) and F(50,10) curves to determine distances to protected and interfering contours respectively. These additional azimuths were not included in the computation of the antenna eight-radial height above average terrain. Elevation data used in the computation of average terrain was determined by linear interpolation of the NGDC 30-arcsecond topographic database consistent with §73.312. The contours and transmitter locations were plotted on maps generated by the United States Census Bureau TIGER Map Service.



**Figure 1. Predicted \$73.509 contour protection in relation to WUTC (BLED-19931130KA), channel 201C1, CHATTANOOGA, TN.**

#### WUTC (BLED-19931130KA) Details

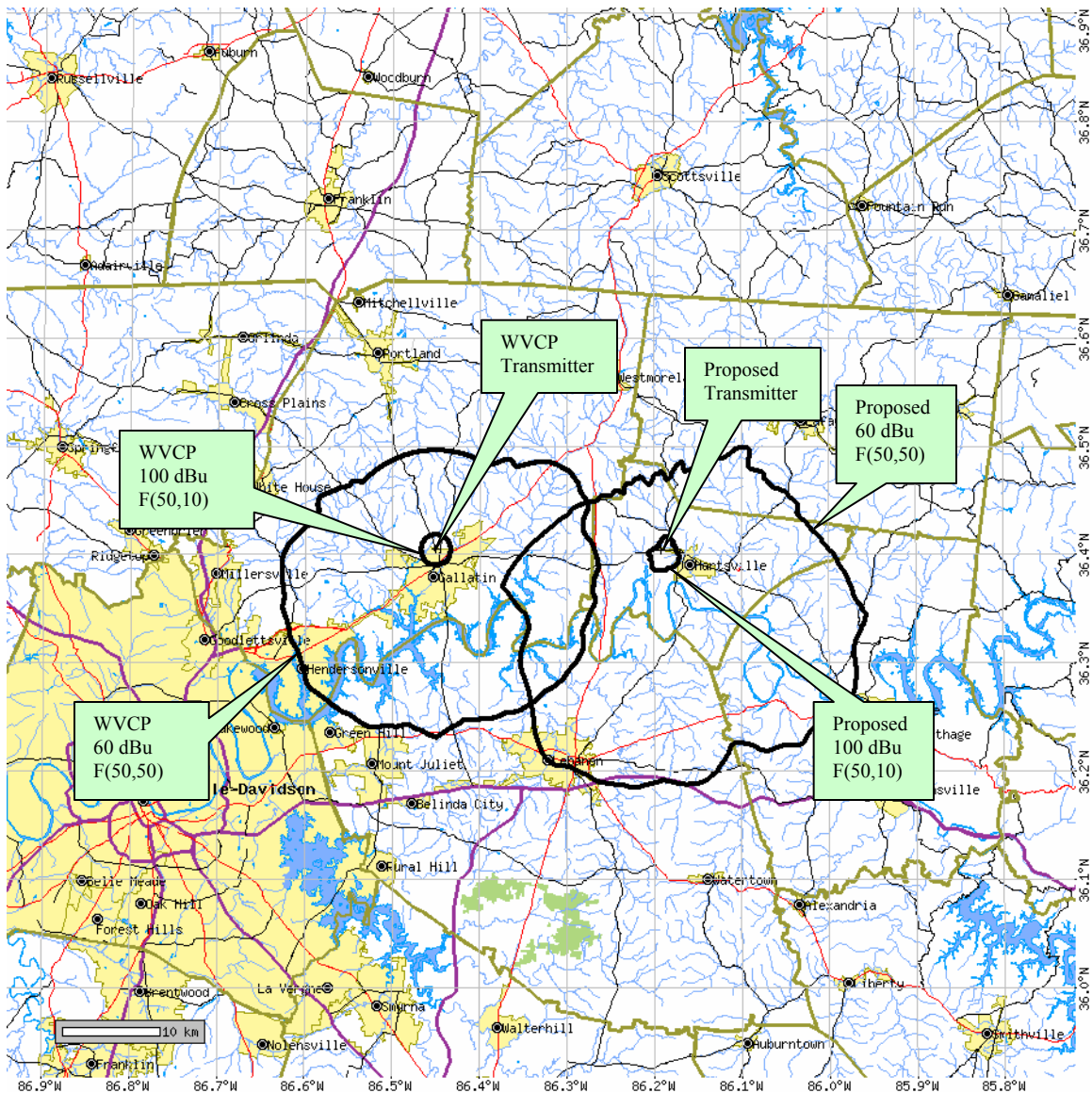
Record Type.....License  
 Community of License.....CHATTANOOGA, TN  
 Latitude (NAD27).....35-12-26 N  
 Longitude (NAD27).....85-16-52 W  
 Channel.....201C1  
 Effective Radiated Power.....30 kW  
 Antenna Height above Average Terrain.....271 m



**Figure 2. Predicted §73.509 contour protection in relation to WSGP (BLED-20021023AAT), channel 202C3, GLASGOW, KY.**

#### WSGP (BLED-20021023AAT) Details

Record Type.....	License
Community of License.....	GLASGOW, KY
Latitude (NAD27).....	36-49-05 N
Longitude (NAD27).....	85-41-30 W
Channel.....	202C3
Effective Radiated Power.....	13 kW
Antenna Height above Average Terrain.....	91 m

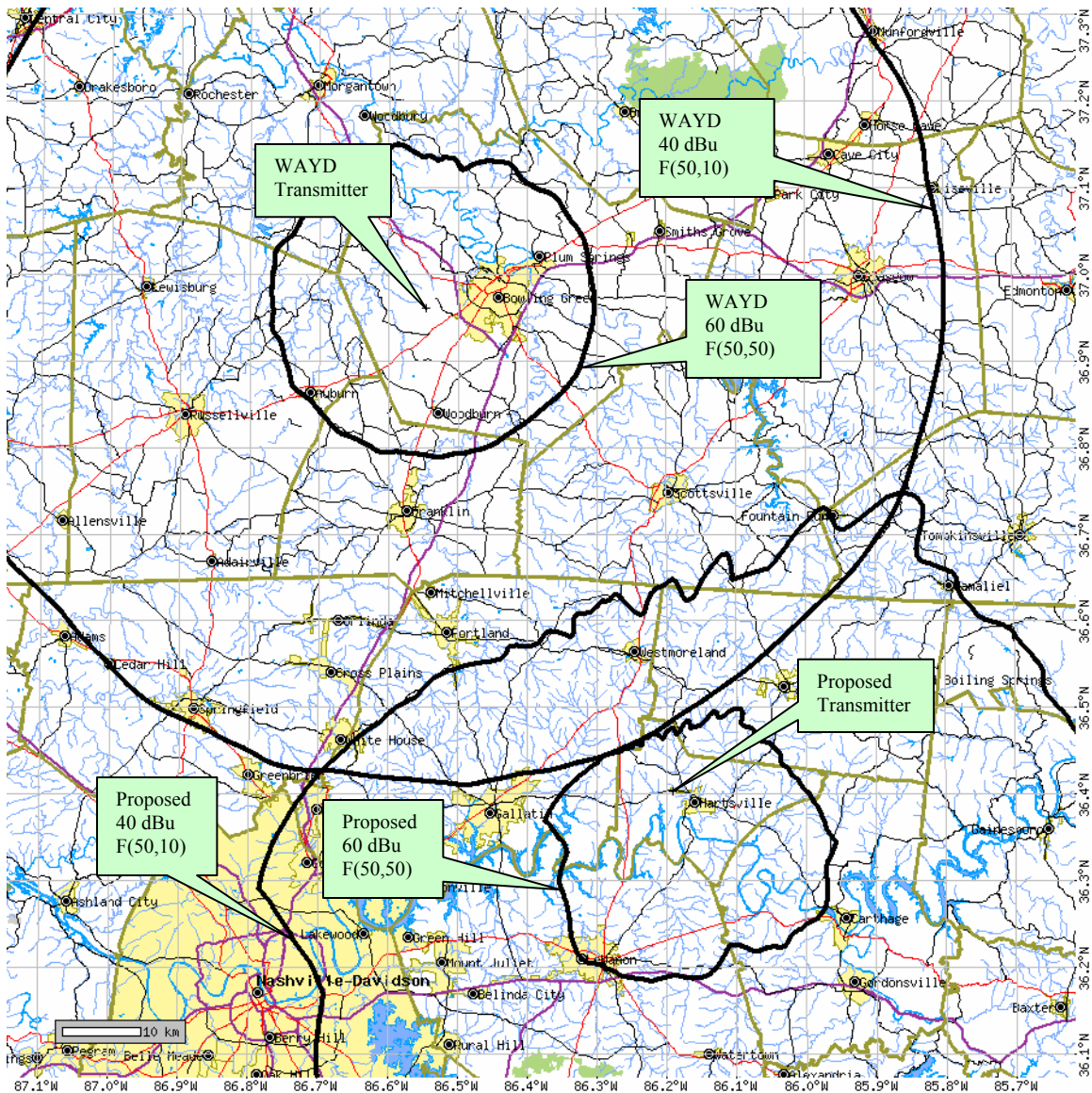


**Figure 3. Predicted 73.509 contour protection in relation to WVCP (BLED-20030508ABK), channel 203A, GALLATIN, TN.**

#### WVCP (BLED-20030508ABK) Details

Record Type.....	License
Community of License.....	GALLATIN, TN
Latitude (NAD27).....	36-24-15 N
Longitude (NAD27).....	86-27-01 W
Channel.....	203A
Effective Radiated Power.....	1 kW
Antenna Height above Average Terrain.....	67 m

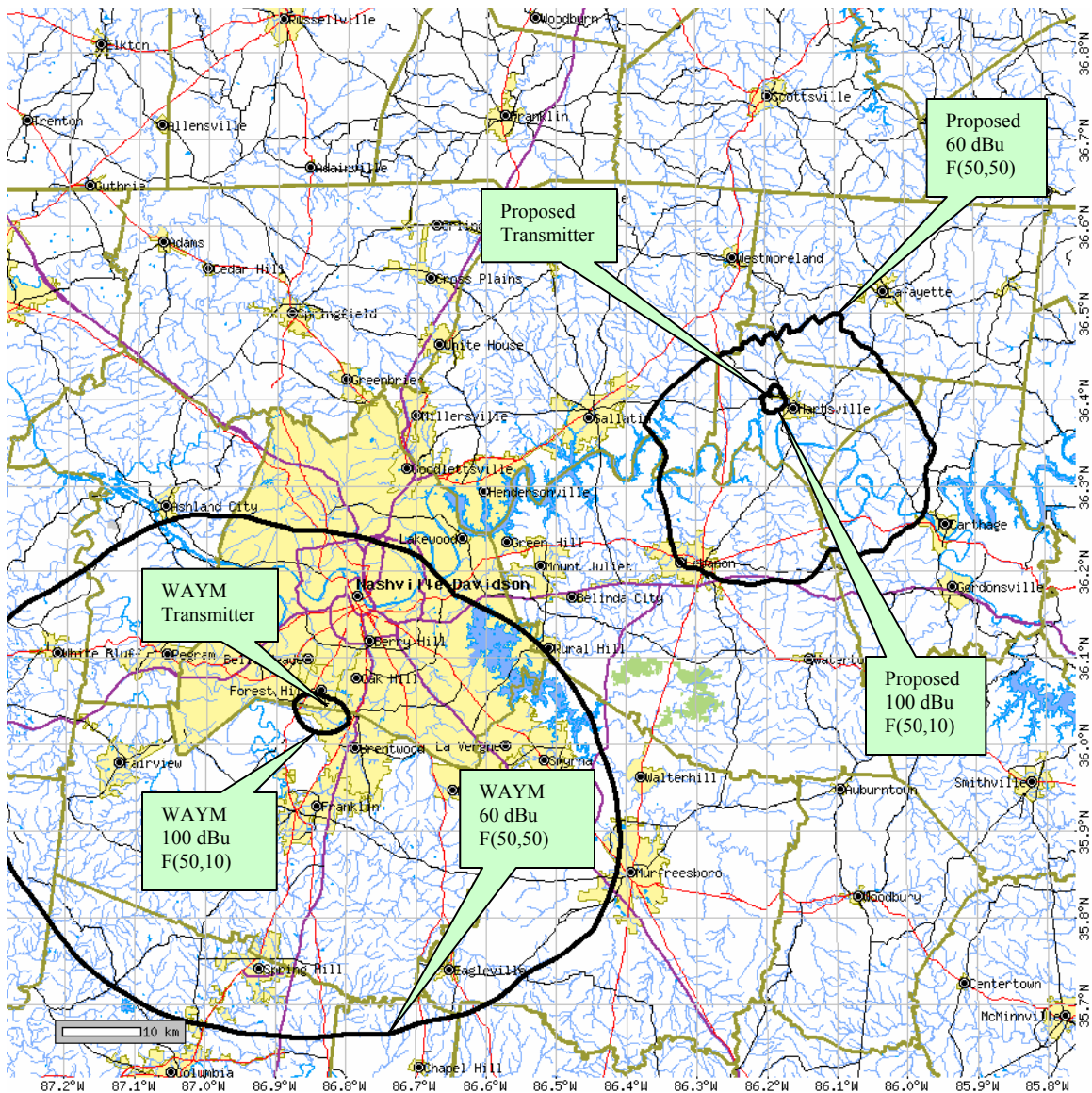




**Figure 4. Predicted §73.509 contour protection in relation to WAYD (BLED-20050705ABJ), channel 201A, AUBURN, KY.**

#### WAYD (BLED-20050705ABJ) Details

Record Type.....	License
Community of License.....	AUBURN, KY
Latitude (NAD27).....	36-57-37 N
Longitude (NAD27).....	86-32-49 W
Channel.....	201A
Effective Radiated Power.....	1 kW
Antenna Height above Average Terrain.....	113 m



**Figure 5. Predicted §73.509 contour protection in relation to WAYM (BPED-20070803ADB), channel 204C2, SPRING HILL, TN.**

#### WAYM (BPED-20070803ADB) Details

Record Type.....Construction Permit  
 Community of License.....SPRING HILL, TN  
 Latitude (NAD27).....36-02-50 N  
 Longitude (NAD27).....86-49-49 W  
 Channel.....204C2  
 Effective Radiated Power.....5 kW  
 Antenna Height above Average Terrain.....330 m