

EXHIBIT 12

Waiver Request of Section 74.1204

K267AE Mountain Home 10Watts ERP

BLFT-20050720ABM

Minor Channel Change to 268

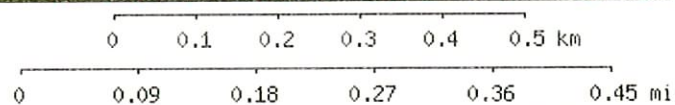
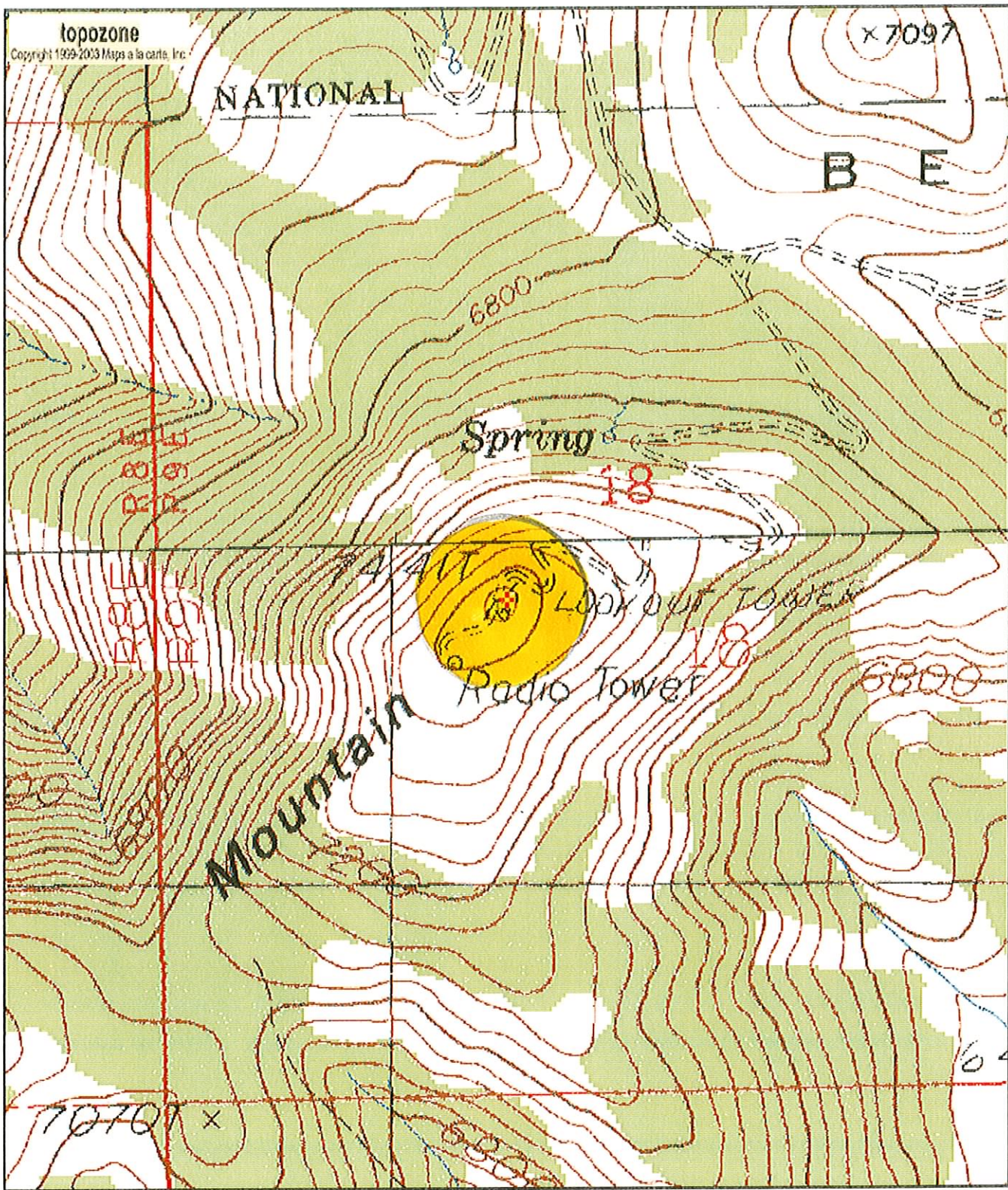
July 2007

Calvary Chapel of Twin Falls, Inc.

The proposed site is contained entirely inside the service contour of second-adjacent FM Station KDBI, Emmett, ID

KDBI

The proposed site is contained entirely inside the service contour of second-adjacent FM Station KDBI, 270C, 57kW, Emmett, ID. The level of least arriving protected F(50,50) signal at the proposed transmitter site of KDBI is 66.2-dBu and using the Undesired-to-Desired method for calculating proposed interference, the interfering contour is 106.6-dBu (free-space contour method employed). The interfering signal would, in the worst case at the maximum radial, extend 111 meters, or .111km, from the base of the tower. Attached is the USGS Bennett Mountain (ID) Quadrangle, with a .111 interference contour shown in yellow. This tower is located in a sparsely populated area on Bennett Mountain where there are no residences, businesses or major roadways near the interference contour, therefore, Calvary Chapel of Twin Falls, Inc. respectfully requests a waiver of the FM translator contour overlap regulations with respect to second-adjacent FM Station KDBI.



43° 14' 57"N, 115° 26' 00"W (NAD27)
Bennett Mountain, USGS Bennett Mountain (ID) Quadrangle
Projection is UTM Zone 11 NAD83 Datum

