

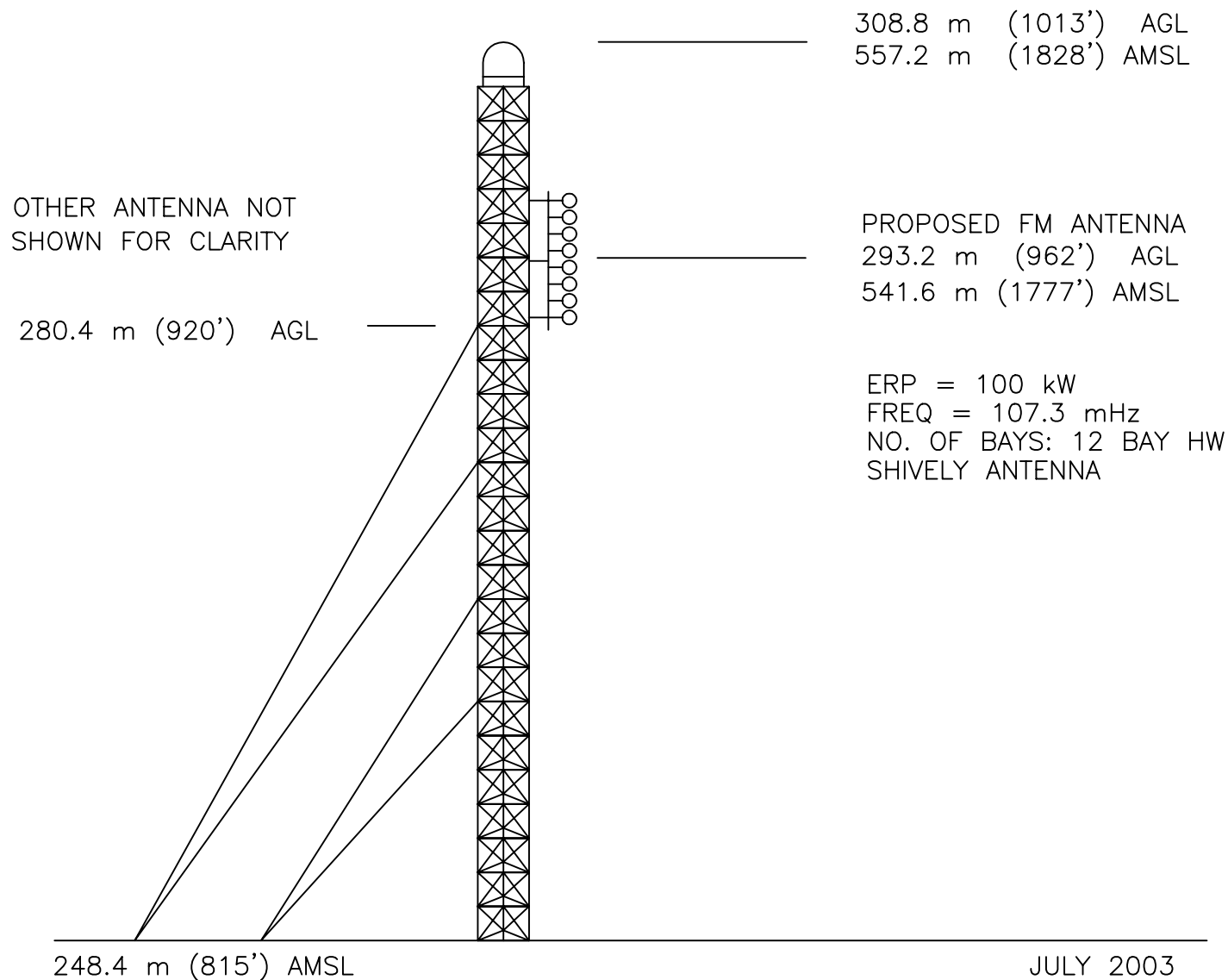
PAINTING AND LIGHTING IN ACCORDANCE  
WITH F.A.A. SPECIFICATIONS.

N. LAT.: 39° 05' 06"  
W. LON: 94° 05' 52" NAD 1927

NOT DRAWN TO  
SCALE OR SHAPE

N. LAT.: 39° 05' 06.0"  
W. LON: 94° 05' 52.8" NAD 1983

F.A.A.: Pending  
TWR REG: after FAA



MULLANEY ENGINEERING, INC.

GAITHERSBURG, MARYLAND

FIGURE 3

VERTICAL SKETCH

RADIO STATION KMJK(FM)

LEXINGTON, MISSOURI

CH. 297C1 100 KW 299 M HAAT