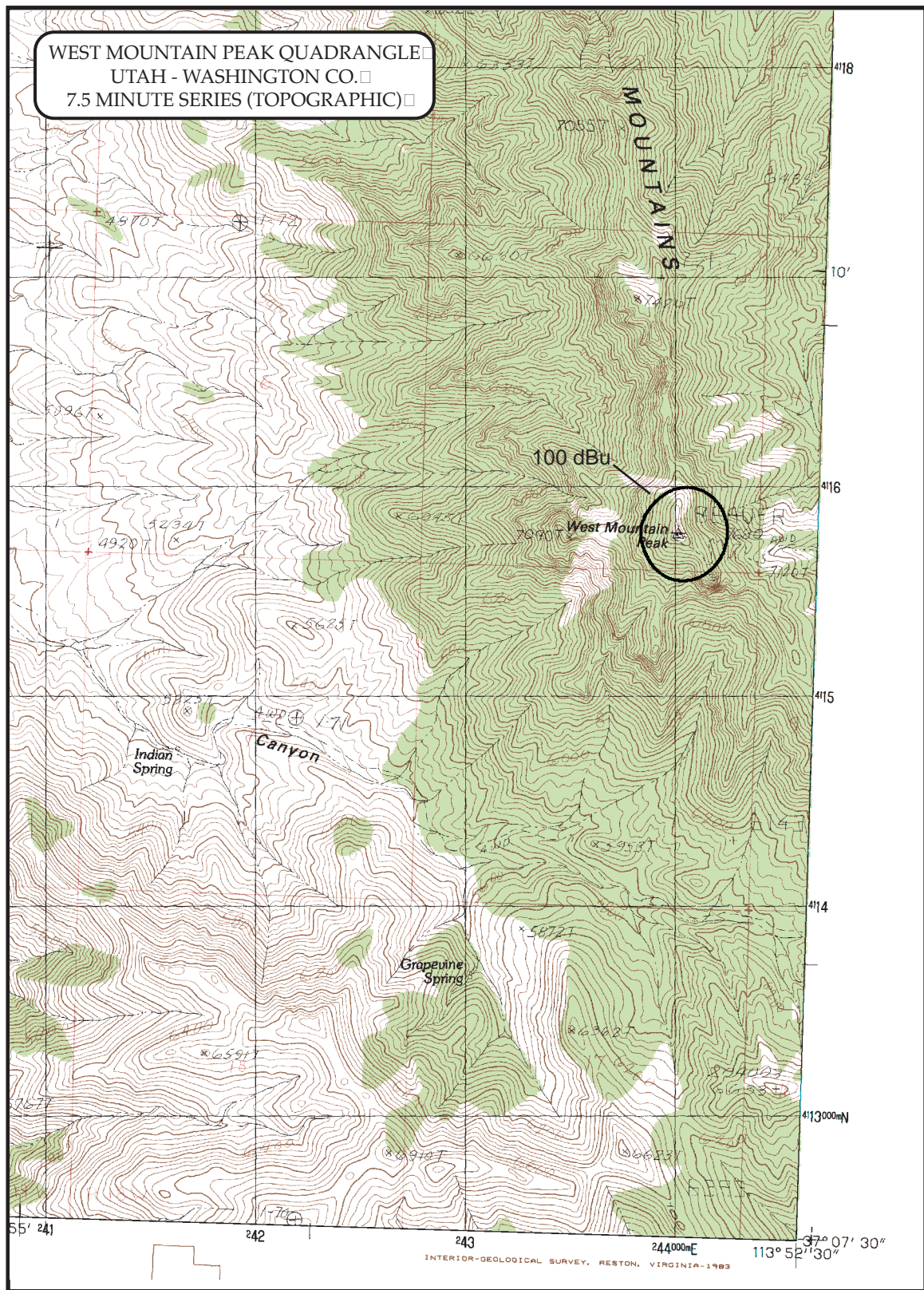


University of Utah
K205ES - Washington County, Utah

REFERENCE CH# 258D - 99.5 MHz, Pwr= 0.01 kw, HAAT=1078.0 M, COR= 2344 M DISPLAY DATES
37 09 15 N Ave. F(50-10) 40 dBu= 65.4 54 dBu= 29.5 80 dBu= 2.2 100 dBu= .2 DATA 01-16-03
113 53 00 W SEARCH 01-16-03

| CH CITY | CALL | TYPE STATE | AZI. <-- | DIST FILE # | LAT. LNG. | Pwr(kw) HAAT(M) | COR(M) INT(km) | PRO(km) LICENSEE | *IN* (Overlap) | *OUT* in km) |
|--|---------|---------------|----------------|--------------------------|-----------------------|--------------------|-------------------|------------------------------------|-------------------|-----------------|
| 260C St. George | ALLO | RSV UT | 134.3 314.3 | 48.80 RM | 36 50 49 113 29 28 | 100.000 600 | 0 13.7 | 91.8 | 17.68 | -43.24 |
| 260C St. George | *KONY | LIC C UT | 134.3 314.3 | 48.80 BMLH20020215ABJ | 36 50 49 113 29 28 | 90.000 811 | 1991 15.8 | 98.7 Keot, Inc. | 20.74 | -50.11< |
| > Reference HAAT at 134.3°= 779.2 M, Pwr= 0.00534 kw, Pro. Dist. = 12.26 km, Int Dist. = 0.16 km | | | | | | | | | | |
| 255C Pioche | *KBZB.C | CP CN NV | 303.7 123.7 | 61.82 BPH20000517AAN | 37 27 40 114 27 55 | 100.000 541 | 2283 13.0 | 89.2 Highland Broadcasters | 32.27 | -27.56< |
| > Reference HAAT at 303.7°= 1199.5 M, Pwr= 0.00802 kw, Pro. Dist. = 16.58 km, Int Dist. = 0.2 km | | | | | | | | | | |
| 205D Washington | *K205ES | CP DV UT | 0.0 180.0 | 0.00 BPFT20021118ACS | 37 09 15 113 53 00 | 0.001 1051 | 2343 7.5 | 7.5 Utah State University Of A | -7.5R | 7.5M |
| > Reference HAAT at 0.0°= 972.7 M, Pwr= 0.00372 kw, Pro. Dist. = 11.26 km, Int Dist. = 11.26 km | | | | | | | | | | |
| 255C Pioche | RADD | ADD NV | 330.1 150.1 | 99.93 | 37 55 58 114 27 04 | 100.000 600 | 0 13.7 | 91.8 | 68.81 | 7.89 |
| 255C Pioche | *KBZB | LIC C NV | 323.6 143.6 | 102.67 BLH20000317ABQ | 37 53 44 114 34 41 | 5.000 1166 | 2870 4.6 | 75.1 Highland Broadcasters | 83.33 | 27.43 |
| > Reference HAAT at 323.6°= 1147.3 M, Pwr= 0.00638 kw, Pro. Dist. = 14.79 km, Int Dist. = 0.18 km | | | | | | | | | | |
| 255D St. George | *K252DK | LIC HN UT | 117.8 297.8 | 29.44 BLFT19930726TG | 37 01 50 113 35 25 | 0.019 -9 | 928 0.3 | 3.7 Marathon Media Group, L.L. | 17.25 | 25.60 |
| > Reference HAAT at 117.8°= 1007.4 M, Pwr= 0.00415 kw, Pro. Dist. = 11.88 km, Int Dist. = 0.14 km | | | | | | | | | | |
| 204D St. George | *K204BY | LIC CN UT | 101.7 281.7 | 26.02 BLFT19940726TI | 37 06 23 113 35 48 | 0.115 -17 | 969 5.8 | 5.8 American Family Associatio | 20.2R | 5.8M |
| > Reference HAAT at 101.7°= 1126.5 M, Pwr= 0.0034 kw, Pro. Dist. = 11.24 km, Int Dist. = 11.24 km | | | | | | | | | | |
| 204D Mesquite | *K204AT | LIC DHN NV | 203.9 23.9 | 41.50 BLFT19860414TF | 36 48 45 114 04 22 | 0.000 -112 | 561 0.5 | 0.5 Nevada Public Radio Corpor | 41.0R | 0.5M |
| > Reference HAAT at 203.9°= 1121.3 M, Pwr= 0.00971 kw, Pro. Dist. = 17.5 km, Int Dist. = 18.61 km | | | | | | | | | | |
| 258D Parowan | *K258AA | LIC HN UT | 46.2 226.2 | 111.19 BLFT19940310TC | 37 50 32 112 58 10 | 0.019 385 | 2067 45.4 | 13.4 Parowan City Corporation | 55.49 | 48.68 |
| > Reference HAAT at 46.2°= 1056.9 M, Pwr= 0.00286 kw, Pro. Dist. = 10.29 km, Int Dist. = 49.14 km | | | | | | | | | | |
| 257C Grand Canyon Villag | RADD | ADD AZ | 136.7 316.7 | 166.29 | 36 03 31 112 36 55 | 100.000 600 | 0 136.6 | 91.8 | 12.30 | 44.99 |
| 205D Parowan, Etc. | *K205BS | LIC HN UT | 39.6 219.6 | 70.28 BLFT19900809TB | 37 38 25 113 22 29 | 0.071 286 | 2245 16.5 | 16.0 Faith Communications Corp. | 54.2R | 16.0M |
| > Reference HAAT at 39.6°= 1042.1 M, Pwr= 0.00289 kw, Pro. Dist. = 10.29 km, Int Dist. = 10.29 km | | | | | | | | | | |
| 204D Moapa, Etc. | *K204AO | LIC HN NV | 227.5 47.5 | 76.93 BLFT19850325TE | 36 41 07 114 31 09 | 0.750 69 | 719 14.0 | 14.0 Nevada Public Radio Corpor | 62.9R | 14.0M |
| > Reference HAAT at 227.5°= 1216.6 M, Pwr= 0.00999 kw, Pro. Dist. = 18.24 km, Int Dist. = 19.48 km | | | | | | | | | | |

 "*" = ERP and HAAT on direct line to and from reference station. "<" = Contour Overlap



100 dBu Interfering Contour

Prepared for
Utah State University
16 January 2003