

Non-Interference Compliance

Regarding Facility id 154006

Channel 279

Description of Exhibit 13 Contents

This exhibit demonstrates that the proposed facility complies with contour overlap and interference protection provisions in all of the applicable rule sections and that this application for a construction permit is in full compliance with 47 C.F.R. § 74.1204.

Let it be noted that should any actual real world interference occur, the applicant acknowledges that it will promptly suspend operation of this translator in accordance with 47 C.F.R. § 74.1203.

Page 2 of this exhibit is an explanation of the method used to demonstrate compliance with contour overlap and interference provisions based on 47 C.F.R. § 74.1204(d), which states:

[A]n application otherwise precluded by this section will be accepted if it can be demonstrated that no actual interference will occur due to intervening terrain, lack of population or such other factors as may be applicable.

Page 3 contains a tabulation of the vertical radiation pattern of the proposed antenna and the minimum ground clearance of the interfering contour based on this pattern.

Pages 4 through 7 include a tabulation of the vertical radiation pattern for the proposed antenna provided by the antenna manufacturer.

Page 8 of this exhibit contains the tabulated data from the interference analysis, which shows all stations whose protected contours come within 50 km of the 34 dBμ F(50,10) contour of the proposed translator. These tabulated values were calculated using data from the FCC's CDBS files and 30 arc second terrain data. The column labeled "Adj" shows the number of channels difference between the entry and the proposed translator. The column labeled "Dist" shows the distance in km. The column labeled "Overlap" shows the area of contour overlap in square kilometers.

Page 9 of this exhibit is a portion of a USGS 1:24,000 scale 7.5 minute quadrangle at full scale with the calculated area of interference overlaid. The sheet includes the quadrangle name and measurement scale at the bottom-left corner (note: "Mt" refers to meters). The area of interference was calculated using the free space equation and 120 radials.

Page 10 of this exhibit is an aerial photo of the vicinity surrounding the proposed translator's tower site.

Note: The tallest buildings within the zone of predicted interference are less than 20ft (6.1m) in height. The proposal provides 25.1m (82.1ft) of ground clearance so a lack of population has been demonstrated within the area of interference and this application is therefore in full compliance with 47 C.F.R. § 74.1204.

Compliance with 47 C.F.R. § 74.1204(d)

All authorized second and third adjacent stations with which the proposed translator has contour overlap are tabulated below. Column four show the station's signal level at the proposed translator's tower site, and column five gives the minimum value within the entire standard interfering contour of the proposed translator (100 dBμ for most classes, 94 for class B, 97 for class B1). The minimum second or third adjacent F(50,50) contour within the proposed translator's standard interfering contour was used to calculate the proposed translator's actual "worst-case" interfering contour.

Application_id	File Number	Callsign	Contour at Tower	Min. Contour
152062	BLH19900904KB	WAKG	91.2	91.2
Minimum F(50,50) Contour of Adjacent Station within Proposed Translator's Standard Interfering Contour				91.2

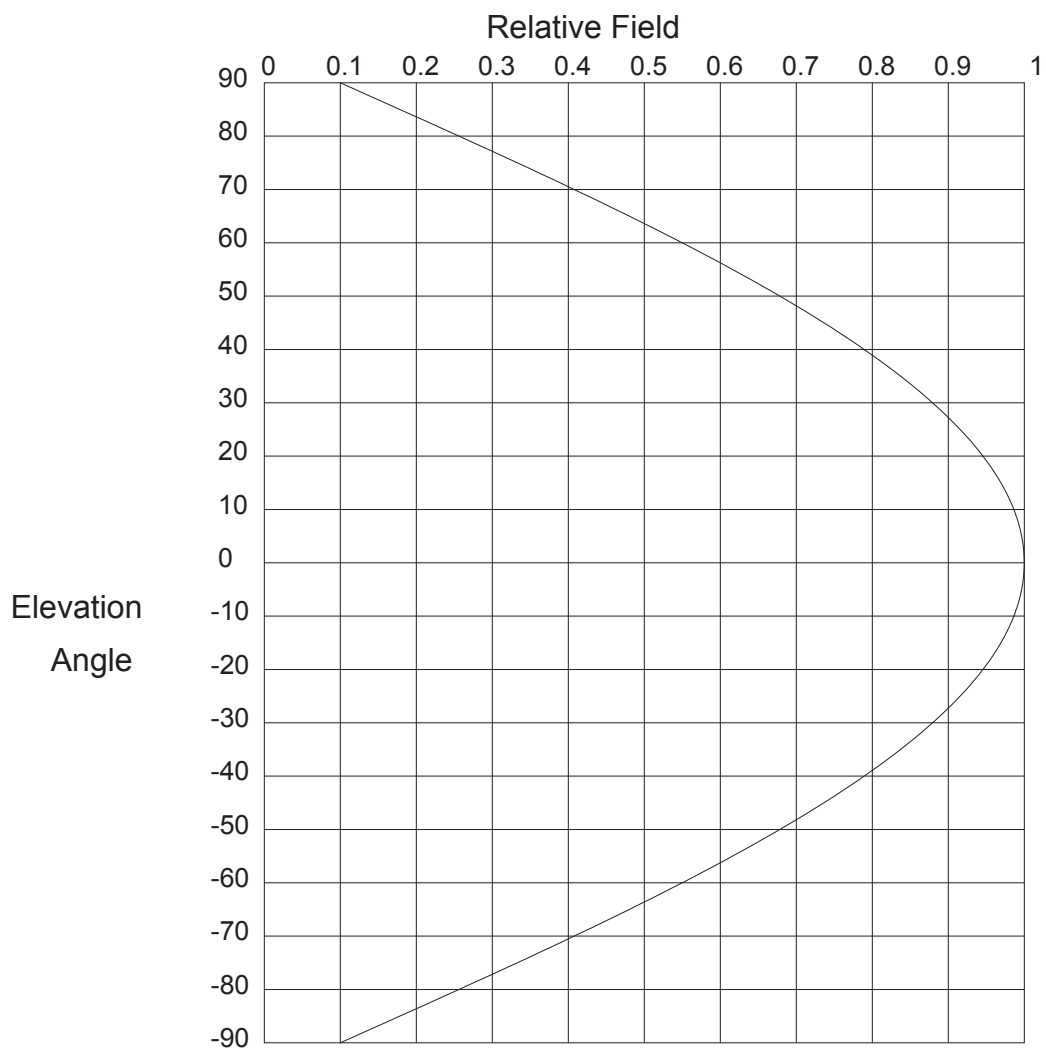
FCC 02-244 at Section II.A.5 states that "when demonstrating that 'no actual interference will occur due to . . . other factors,' pursuant to Section 74.1204(d), an applicant may use the undesired-to-desired signal ratio method." The undesired-to-desired ratio for second and third adjacent stations required by § 74.1204(a) is 40 dB. Since the minimum protected contour strength within the proposed translator's standard interference contour is **91.2 dBμ**, this makes the proposed translator's worst-case interfering contour **131.2 dBμ**. By the free-space equation, this contour is calculated to extend a maximum of **30.5 m** from the transmit antenna.

The maximum horizontal plane of the interfering contour was calculated for 120 radials and plotted on the pertinent portion of a USGS quadrangle (page 9 of this exhibit). However, the field strength of the proposed translator's antenna varies with angle of depression from horizontal. The antenna relative fields are tabulated on the following page at 5 degree increments, starting at 5 degrees below horizontal. Antenna relative field strength data was provided and certified by the manufacturer of the proposed antenna. Using a free-space calculation that neglects any loss due to reflection, the vertical ground clearance of the proposed translator's interference contour has been tabulated. As shown on the following page, the area of interference clears the tower ground level (TGL) by **25.1 m** at the lowest point. The applicant has taken into account USGS quadrangles and relevant aerial photography in stating that no structures, except possibly tower support structures, puncture the area of interference.

Note: The tallest buildings within the zone of predicted interference are less than 20ft (6.1m) in height. The proposal provides 25.1m (82.1ft) of ground clearance so a lack of population has been demonstrated within the area of interference and this application is therefore in full compliance with 47 C.F.R. § 74.1204.

Antenna Manufacturer:	SWR
Antenna Model:	FMEC-1-TA2
CORAGL:	41 m
Maximum ERP:	0.25 kW
Interfering Contour:	131.2 dBμ
Max Int. Contour Distance:	30.5 m
Min Ground Clearance:	25.1 m

Depression Angle Below Horizontal	Antenna Relative Field	ERP (watts)	Distance to Interfering Contour from Antenna (m)	Horizontal Distance of Interfering Contour from Tower (m)	Vertical Clearance of Interfering Contour above TGL (m)
5	.997	248.5	30.5	30.3	38.3
10	.986	243.0	30.1	29.7	35.8
15	.969	234.7	29.6	28.6	33.3
20	.946	223.7	28.9	27.2	31.1
25	.916	209.8	28.0	25.4	29.2
30	.879	193.2	26.9	23.3	27.6
35	.837	175.1	25.6	20.9	26.3
40	.789	155.6	24.1	18.5	25.5
45	.736	135.4	22.5	15.9	25.1
50	.679	115.3	20.7	13.3	25.1
55	.616	94.9	18.8	10.8	25.6
60	.550	75.6	16.8	8.4	26.4
65	.480	57.6	14.7	6.2	27.7
70	.408	41.6	12.5	4.3	29.3
75	.333	27.7	10.2	2.6	31.2
80	.256	16.4	7.8	1.4	33.3
85	.178	7.9	5.4	0.5	35.6
90	.100	2.5	3.1	0.0	37.9
Minimum Clearance above TGL:					25.1 m



Elevation Pattern

Scale: Linear

Units: Field, Relative

Systems With Reliability

CLIENT: W279AO

Date: 2/24/2011

ANTENNA TYPE: FMEC/1-TA

FREQUENCY: 103.7 MHz

PATTERN POL.: Circular

DIRECTIVITY(Peak): 0.883/-0.539 dBd

Beam Tilt (Deg.) : 0

DIRECTIVITY(Horiz): 0.883/-0.539 dBd

Null Fill(s)(%) : 0, 0, 0

Relative Field Tabulation

Elev. Angle	Rel. Fld(dB)	Elev. Angle	Rel. Fld(dB)	Elev. Angle	Rel. Fld(dB)
90.0	.10 (-20)	52.0	.654 (-3.687)	14.0	.973 (-0.235)
89.0	.116 (-18.733)	51.0	.666 (-3.525)	13.0	.977 (-0.203)
88.0	.131 (-17.627)	50.0	.679 (-3.369)	12.0	.98 (-0.173)
87.0	.147 (-16.648)	49.0	.69 (-3.217)	11.0	.983 (-0.145)
86.0	.163 (-15.768)	48.0	.702 (-3.071)	10.0	.986 (-0.12)
85.0	.178 (-14.97)	47.0	.714 (-2.928)	9.8	.987 (-0.115)
84.0	.194 (-14.241)	46.0	.725 (-2.791)	9.6	.987 (-0.11)
83.0	.21 (-13.569)	45.0	.736 (-2.658)	9.4	.988 (-0.106)
82.0	.225 (-12.946)	44.0	.747 (-2.529)	9.2	.988 (-0.101)
81.0	.241 (-12.367)	43.0	.758 (-2.404)	9.0	.989 (-0.097)
80.0	.256 (-11.826)	42.0	.769 (-2.283)	8.8	.989 (-0.093)
79.0	.272 (-11.317)	41.0	.779 (-2.167)	8.6	.99 (-0.088)
78.0	.287 (-10.839)	40.0	.789 (-2.054)	8.4	.99 (-0.084)
77.0	.302 (-10.387)	39.0	.799 (-1.944)	8.2	.991 (-0.08)
76.0	.318 (-9.959)	38.0	.809 (-1.839)	8.0	.991 (-0.076)
75.0	.333 (-9.553)	37.0	.819 (-1.737)	7.8	.992 (-0.073)
74.0	.348 (-9.167)	36.0	.828 (-1.638)	7.6	.992 (-0.069)
73.0	.363 (-8.799)	35.0	.837 (-1.543)	7.4	.993 (-0.065)
72.0	.378 (-8.448)	34.0	.846 (-1.451)	7.2	.993 (-0.062)
71.0	.393 (-8.112)	33.0	.855 (-1.363)	7.0	.993 (-0.058)
70.0	.408 (-7.791)	32.0	.863 (-1.277)	6.8	.994 (-0.055)
69.0	.423 (-7.483)	31.0	.871 (-1.195)	6.6	.994 (-0.052)
68.0	.437 (-7.187)	30.0	.879 (-1.116)	6.4	.994 (-0.049)
67.0	.452 (-6.904)	29.0	.887 (-1.04)	6.2	.995 (-0.046)
66.0	.466 (-6.631)	28.0	.895 (-0.967)	6.0	.995 (-0.043)
65.0	.48 (-6.369)	27.0	.902 (-0.897)	5.8	.995 (-0.04)
64.0	.495 (-6.116)	26.0	.909 (-0.83)	5.6	.996 (-0.037)
63.0	.509 (-5.873)	25.0	.916 (-0.765)	5.4	.996 (-0.035)
62.0	.523 (-5.638)	24.0	.922 (-0.704)	5.2	.996 (-0.032)
61.0	.536 (-5.411)	23.0	.928 (-0.645)	5.0	.997 (-0.03)
60.0	.55 (-5.193)	22.0	.934 (-0.589)	4.8	.997 (-0.027)
59.0	.564 (-4.982)	21.0	.94 (-0.535)	4.6	.997 (-0.025)
58.0	.577 (-4.778)	20.0	.946 (-0.485)	4.4	.997 (-0.023)
57.0	.59 (-4.58)	19.0	.951 (-0.437)	4.2	.998 (-0.021)
56.0	.603 (-4.39)	18.0	.956 (-0.391)	4.0	.998 (-0.019)
55.0	.616 (-4.205)	17.0	.961 (-0.348)	3.8	.998 (-0.017)
54.0	.629 (-4.027)	16.0	.965 (-0.308)	3.6	.998 (-0.015)
53.0	.642 (-3.854)	15.0	.969 (-0.271)	3.4	.998 (-0.014)

Systems With Reliability

Page 1 of 3

CLIENT: W279AO

Date: 2/24/2011

ANTENNA TYPE: FMEC/1-TA

FREQUENCY: 103.7 MHz

PATTERN POL.: Circular

DIRECTIVITY(Peak): 0.883/-0.539 dBd

Beam Tilt (Deg.) : 0

DIRECTIVITY(Horiz): 0.883/-0.539 dBd

Null Fill(s)(%) : 0, 0, 0

Relative Field Tabulation

Elev. Angle	Rel. Fld(dB)	Elev. Angle	Rel. Fld(dB)	Elev. Angle	Rel. Fld(dB)
3.2	.999 (-0.012)	-4.4	.997 (-0.023)	-12.0	.98 (-0.173)
3.0	.999 (-0.011)	-4.6	.997 (-0.025)	-12.2	.98 (-0.178)
2.8	.999 (-0.009)	-4.8	.997 (-0.027)	-12.4	.979 (-0.184)
2.6	.999 (-0.008)	-5.0	.997 (-0.03)	-12.6	.978 (-0.19)
2.4	.999 (-0.007)	-5.2	.996 (-0.032)	-12.8	.978 (-0.196)
2.2	.999 (-0.006)	-5.4	.996 (-0.035)	-13.0	.977 (-0.203)
2.0	.999 (-0.005)	-5.6	.996 (-0.037)	-13.2	.976 (-0.209)
1.8	1.00 (-0.004)	-5.8	.995 (-0.04)	-13.4	.975 (-0.215)
1.6	1.00 (-0.003)	-6.0	.995 (-0.043)	-13.6	.975 (-0.222)
1.4	1.00 (-0.002)	-6.2	.995 (-0.046)	-13.8	.974 (-0.229)
1.2	1.00 (-0.002)	-6.4	.994 (-0.049)	-14.0	.973 (-0.235)
1.0	1.00 (-0.001)	-6.6	.994 (-0.052)	-14.2	.973 (-0.242)
.8	1.00 (-0.001)	-6.8	.994 (-0.055)	-14.4	.972 (-0.249)
.6	1.00 (0)	-7.0	.993 (-0.058)	-14.6	.971 (-0.256)
.4	1.00 (0)	-7.2	.993 (-0.062)	-14.8	.97 (-0.263)
.2	1.00 (0)	-7.4	.993 (-0.065)	-15.0	.969 (-0.271)
.0	1.00 (0)	-7.6	.992 (-0.069)	-15.2	.969 (-0.278)
-.2	1.00 (0)	-7.8	.992 (-0.073)	-15.4	.968 (-0.285)
-.4	1.00 (0)	-8.0	.991 (-0.076)	-15.6	.967 (-0.293)
-.6	1.00 (0)	-8.2	.991 (-0.08)	-15.8	.966 (-0.3)
-.8	1.00 (-0.001)	-8.4	.99 (-0.084)	-16.0	.965 (-0.308)
-1.0	1.00 (-0.001)	-8.6	.99 (-0.088)	-16.2	.964 (-0.316)
-1.2	1.00 (-0.002)	-8.8	.989 (-0.093)	-16.4	.963 (-0.324)
-1.4	1.00 (-0.002)	-9.0	.989 (-0.097)	-16.6	.962 (-0.332)
-1.6	1.00 (-0.003)	-9.2	.988 (-0.101)	-16.8	.962 (-0.34)
-1.8	1.00 (-0.004)	-9.4	.988 (-0.106)	-17.0	.961 (-0.348)
-2.0	.999 (-0.005)	-9.6	.987 (-0.11)	-17.2	.96 (-0.357)
-2.2	.999 (-0.006)	-9.8	.987 (-0.115)	-17.4	.959 (-0.365)
-2.4	.999 (-0.007)	-10.0	.986 (-0.12)	-17.6	.958 (-0.374)
-2.6	.999 (-0.008)	-10.2	.986 (-0.124)	-17.8	.957 (-0.383)
-2.8	.999 (-0.009)	-10.4	.985 (-0.129)	-18.0	.956 (-0.391)
-3.0	.999 (-0.011)	-10.6	.985 (-0.134)	-18.2	.955 (-0.4)
-3.2	.999 (-0.012)	-10.8	.984 (-0.14)	-18.4	.954 (-0.409)
-3.4	.998 (-0.014)	-11.0	.983 (-0.145)	-18.6	.953 (-0.418)
-3.6	.998 (-0.015)	-11.2	.983 (-0.15)	-18.8	.952 (-0.427)
-3.8	.998 (-0.017)	-11.4	.982 (-0.156)	-19.0	.951 (-0.437)
-4.0	.998 (-0.019)	-11.6	.982 (-0.161)	-19.2	.95 (-0.446)
-4.2	.998 (-0.021)	-11.8	.981 (-0.167)	-19.4	.949 (-0.456)

Systems With Reliability

Page 2 of 3

CLIENT: W279AO

Date: 2/24/2011

ANTENNA TYPE: FMEC/1-TA

FREQUENCY: 103.7 MHz

PATTERN POL.: Circular

DIRECTIVITY(Peak): 0.883/-0.539 dBd

Beam Tilt (Deg.) : 0

DIRECTIVITY(Horiz): 0.883/-0.539 dBd

Null Fill(s)(%) : 0, 0, 0

Relative Field Tabulation

Elev. Angle	Rel. Fld(dB)	Elev. Angle	Rel. Fld(dB)	Elev. Angle	Rel. Fld(dB)
-19.6	.948 (-0.465)	-27.2	.90 (-0.911)	-54.0	.629 (-4.027)
-19.8	.947 (-0.475)	-27.4	.899 (-0.924)	-55.0	.616 (-4.205)
-20.0	.946 (-0.485)	-27.6	.898 (-0.939)	-56.0	.603 (-4.39)
-20.2	.945 (-0.495)	-27.8	.896 (-0.953)	-57.0	.59 (-4.58)
-20.4	.944 (-0.505)	-28.0	.895 (-0.967)	-58.0	.577 (-4.778)
-20.6	.942 (-0.515)	-28.2	.893 (-0.981)	-59.0	.564 (-4.982)
-20.8	.941 (-0.525)	-28.4	.892 (-0.996)	-60.0	.55 (-5.193)
-21.0	.94 (-0.535)	-28.6	.89 (-1.01)	-61.0	.536 (-5.411)
-21.2	.939 (-0.546)	-28.8	.889 (-1.025)	-62.0	.523 (-5.638)
-21.4	.938 (-0.556)	-29.0	.887 (-1.04)	-63.0	.509 (-5.873)
-21.6	.937 (-0.567)	-29.2	.886 (-1.055)	-64.0	.495 (-6.116)
-21.8	.936 (-0.578)	-29.4	.884 (-1.07)	-65.0	.48 (-6.369)
-22.0	.934 (-0.589)	-29.6	.883 (-1.085)	-66.0	.466 (-6.631)
-22.2	.933 (-0.6)	-29.8	.881 (-1.101)	-67.0	.452 (-6.904)
-22.4	.932 (-0.611)	-30.0	.879 (-1.116)	-68.0	.437 (-7.187)
-22.6	.931 (-0.622)	-31.0	.871 (-1.195)	-69.0	.423 (-7.483)
-22.8	.93 (-0.633)	-32.0	.863 (-1.277)	-70.0	.408 (-7.791)
-23.0	.928 (-0.645)	-33.0	.855 (-1.363)	-71.0	.393 (-8.112)
-23.2	.927 (-0.656)	-34.0	.846 (-1.451)	-72.0	.378 (-8.448)
-23.4	.926 (-0.668)	-35.0	.837 (-1.543)	-73.0	.363 (-8.799)
-23.6	.925 (-0.68)	-36.0	.828 (-1.638)	-74.0	.348 (-9.167)
-23.8	.923 (-0.692)	-37.0	.819 (-1.737)	-75.0	.333 (-9.553)
-24.0	.922 (-0.704)	-38.0	.809 (-1.839)	-76.0	.318 (-9.959)
-24.2	.921 (-0.716)	-39.0	.799 (-1.944)	-77.0	.302 (-10.387)
-24.4	.92 (-0.728)	-40.0	.789 (-2.054)	-78.0	.287 (-10.839)
-24.6	.918 (-0.74)	-41.0	.779 (-2.167)	-79.0	.272 (-11.317)
-24.8	.917 (-0.753)	-42.0	.769 (-2.283)	-80.0	.256 (-11.826)
-25.0	.916 (-0.765)	-43.0	.758 (-2.404)	-81.0	.241 (-12.367)
-25.2	.914 (-0.778)	-44.0	.747 (-2.529)	-82.0	.225 (-12.946)
-25.4	.913 (-0.791)	-45.0	.736 (-2.658)	-83.0	.21 (-13.569)
-25.6	.912 (-0.803)	-46.0	.725 (-2.791)	-84.0	.194 (-14.241)
-25.8	.91 (-0.816)	-47.0	.714 (-2.928)	-85.0	.178 (-14.97)
-26.0	.909 (-0.83)	-48.0	.702 (-3.071)	-86.0	.163 (-15.768)
-26.2	.908 (-0.843)	-49.0	.69 (-3.217)	-87.0	.147 (-16.648)
-26.4	.906 (-0.856)	-50.0	.679 (-3.369)	-88.0	.131 (-17.627)
-26.6	.905 (-0.87)	-51.0	.666 (-3.525)	-89.0	.116 (-18.733)
-26.8	.903 (-0.883)	-52.0	.654 (-3.687)	-90.0	.10 (-20)
-27.0	.902 (-0.897)	-53.0	.642 (-3.854)	90.0	.00 (-50)

Systems With Reliability

Page 3 of 3

CLIENT: W279AO

Date: 2/24/2011

ANTENNA TYPE: FMEC/1-TA

FREQUENCY: 103.7 MHz

PATTERN POL.: Circular

DIRECTIVITY(Peak): 0.883/-0.539 dBd

Beam Tilt (Deg.) : 0

DIRECTIVITY(Horiz): 0.883/-0.539 dBd

Null Fill(s)(%) : 0, 0, 0

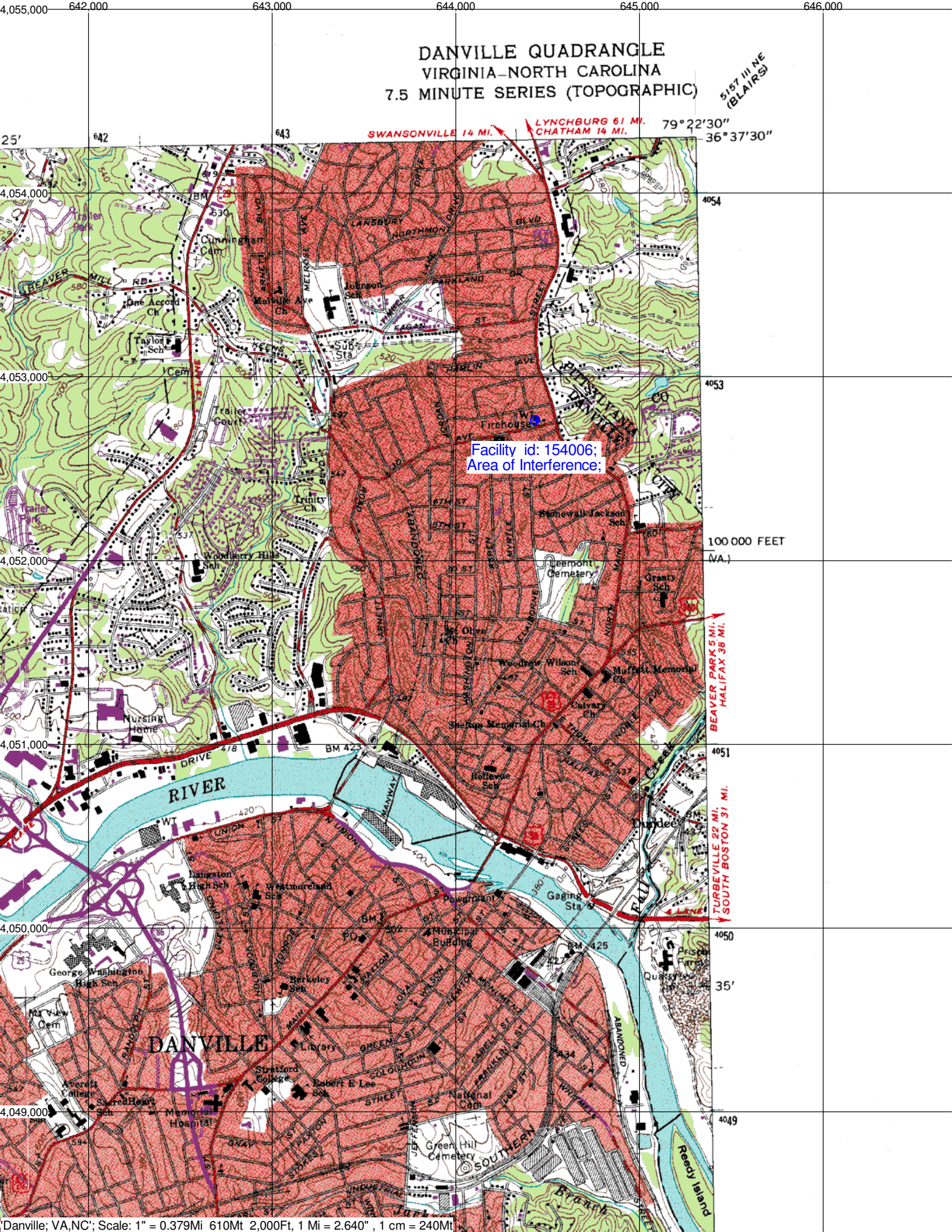
Adjacent Channel Study **For Station W279AO, Facility_id: 154006**

Co-channel through third adjacent:

Application_id	Facility_id	Prefix	ARN	Call	Licensee	Class	City	State	Status	ERP	RCMSL	Channel	Adj	Dist	Overlap
152062	52545	BLH	19900904KB	WAKG	PIEDMONT BROADCASTING CORPORATION	C1	DANVILLE	VA	LIC	100	410	277	2	14.4	0.9021
1177020	154012	BLFT	20070315ACH	W279AN	LIBERTY UNIVERSITY, INC.	D	SOUTH BOSTON	VA	LIC	0.01	285	279	0	42.4	0
1202785	152725	BLFT	20070831AAB	W279BW	LIBERTY UNIVERSITY, INC.	D	ROXBORO	NC	LIC	0.01	363	279	0	43.2	0
117258	68667	BLER	19880819KC	WUAG	U. OF NORTH CAROLINA AT GREENSBORO	D	GREENSBORO	NC	LIC	0.018	323	276	3	71.8	0
260921	87023	BLFT	19980127TC	W278AM	TRIAD FAMILY NETWORK, INC.	D	SEDALIA	NC	LIC	0.01	466	278	1	81.6	0
256512	79178	BLFT	19971106TB	W280DB	POSITIVE ALTERNATIVE RADIO, INC.	D	LYNCHBURG	VA	LIC	0.01	425	280	1	84.3	0
1000403	135187	BLL	20040629ACS	WCOM-LP	PUBLIC GALLERY OF CARRBORO, INC.	L1	CHAPEL HILL	NC	LIC	0	149	278	1	86.4	0
1384330	58392	BMPH	20100706HZY	WTQR	CLEAR CHANNEL BROADCASTING LICENSES, I	C	WINSTON-SALEM	NC	CP MOD	100	850	281	2	91.8	0
218297	58392	BLH	19960111KD	WTQR	CLEAR CHANNEL BROADCASTING LICENSES, I	C	WINSTON-SALEM	NC	LIC	100	763	281	2	92.3	0
1069436	58392	BXLH	20050627ACF	WTQR	CLEAR CHANNEL BROADCASTING LICENSES, I	C	WINSTON-SALEM	NC	LIC	45	763	281	2	92.4	0
1378993	70360	BMLFT	20100706EHK	W279AC	POSITIVE ALTERNATIVE RADIO, INC.	D	ROANOKE	VA	LIC	0.233	722	279	0	94.4	0
1290518	28340	BPH	20080114ACM	WXCF-FM	WVJT, LLC	A	BIG ISLAND	VA	CP	0.2	841.2	280	1	95.7	0
634558	142607	BNPFT	20030312AKH	NEW	TRIAD FAMILY NETWORK, INC	D	ASHEBORO	NC	APP	0.01	375	277	2	105.7	0
1394052	24931	BPH	20110301ABN	WFXK	RADIO ONE LICENSES, LLC	C1	BUNN	NC	APP	100	375	282	3	134.5	0
145011	24931	BLH	19900209KD	WFXK	RADIO ONE LICENSES, LLC	C1	TARBORO	NC	LIC	100	375	282	3	134.5	0

Intermediate Frequencies (53 and 54 channels difference):

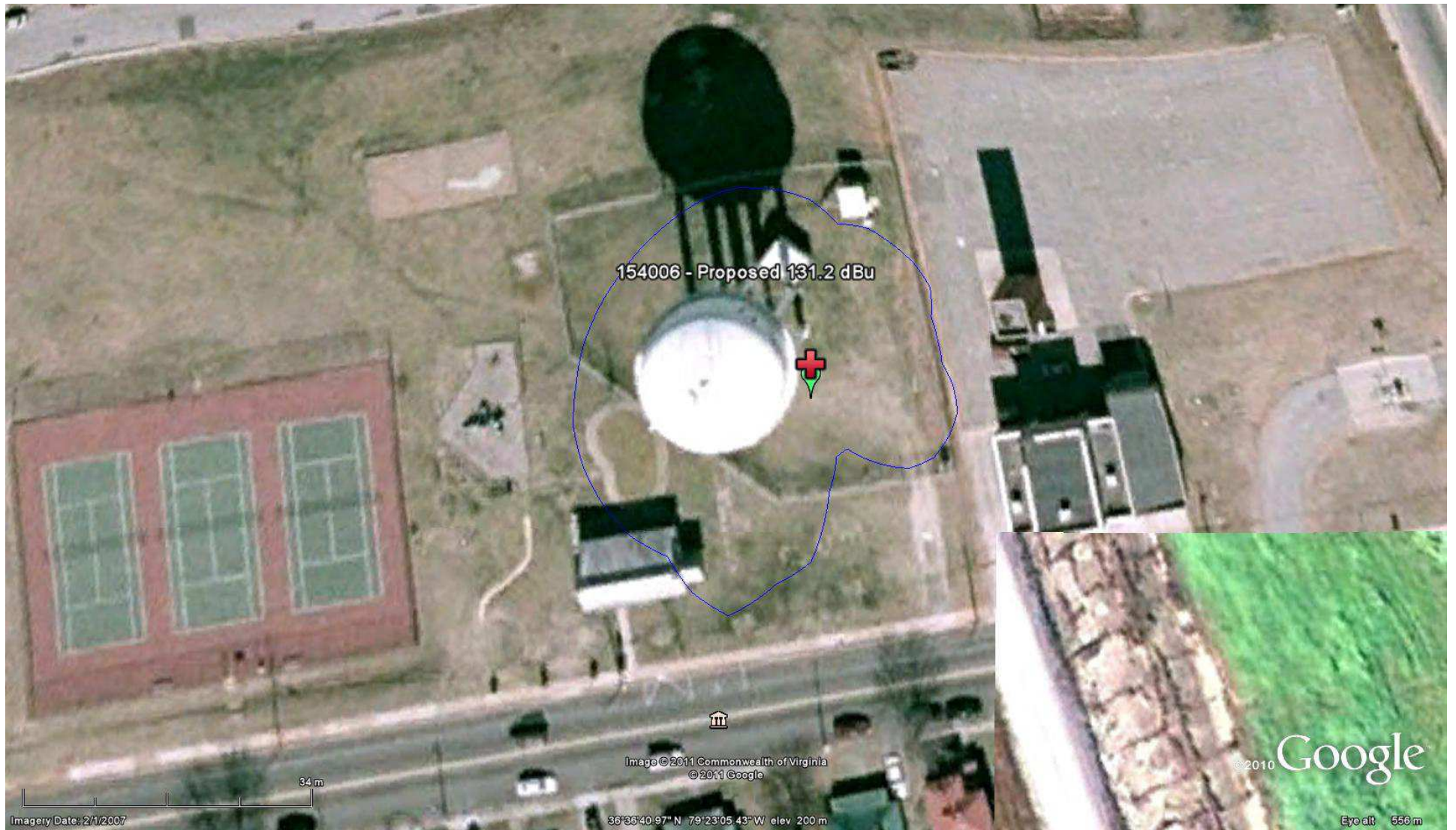
Application_id	Facility_id	Prefix	ARN	Call	Licensee	Class	City	State	Status	ERP	RCMSL	Channel	Adj	Dist	Clr
628872	40752	BMLH	20030303ABL	WPAW	ENTERCOM GREENSBORO LICENSE, LLC	C	WINSTON-SALEM	NC	LIC	99	568	226	53	62.1	33.1
631083	139940	BNPFT	20030314BRV	NEW	CAPSTAR TX LIMITED PARTNERSHIP	D	DURHAM	NC	APP	0.25	196	225	54	80.1	70.1
631055	139926	BNPFT	20030314BRQ	NEW	CAPSTAR TX LIMITED PARTNERSHIP	D	MORRISVILLE	NC	APP	0.25	162	225	54	98	88



DANVILLE QUADRANGLE
VIRGINIA-NORTH CAROLINA
7.5 MINUTE SERIES (TOPOGRAPHIC)

5157 III NE
(BLAIRS)

Facility id: 154006;
Area of Interference;



154006 - Proposed 131.2 dBu

Image © 2011 Commonwealth of Virginia
© 2011 Google

36°35'40.97" N 79°23'05.43" W elev 200 m

© 2010 Google

Eye alt 556 m