

TECHNICAL EXHIBIT
APPLICATION FOR CONSTRUCTION PERMIT
CAPSTAR TX LIMITED PARTNERSHIP
RADIO STATION KWHN
FORT SMITH, AR

1320 KHZ 5.0 KW U DA-N

Technical Narrative

The technical exhibit of which this narrative is part has been prepared for Capstar TX Limited Partnership, licensee of AM broadcast station KWHN, Fort Smith, Arkansas. KWHN is a licensed Class B station for operation on 1320 kilohertz with unlimited operation of 5.0 kilowatts using a non-directional antenna daytime and a four-tower directional antenna during nighttime hours. By means of this application, the licensee proposes to update the transmitter site location coordinates as given on the existing license. No other changes are proposed with this application.

This update was recently found to be necessary by comparison of the licensed transmitter site coordinates, which date from when the station was first constructed, with more recent coordinates that were determined during a recent tower survey. The proposed change has no bearing on the allocation situation with regard to other stations, as KWHN has always operated from this site and no actual changes are being made to the licensed transmission system.

The NAD 27 coordinates as determined from a recent tower survey are:

35-25-1 N

94-21-54 W

The current license indicates the station's coordinates as:

35-24-36 N

94-21-30 W

When comparing the licensed with the surveyed coordinates, a discrepancy of 25 seconds in the North Latitude and 24 seconds in West Longitude exists. Figure 1, shows the coordinates plotted on a topographical map (Figure 1) as well as a satellite photo (Figure 2). As can be seen from Figure 1, the coordinates given in the survey are correct. It's requested that a construction permit be issued with the new set of coordinates but that the requirement for a proof of performance be suspended as the station's physical location has not changed and no changes are being made to the licensed antenna system.

The existing provisions for environmental protection will continue to remain in force at the KWHN site. This statement addresses only human exposure to radiofrequency radiation and not to other non-radiofrequency matters listed in the National Environmental Protection Act of 1969.

Allan B. Brace

Technical Director

Capstar TX Limited Partnership

2625 S. Memorial

Tulsa, OK 74129

allanbrace@clearchannel.com

918-664-4581

Figure 1
Topographical Map
NAD 27

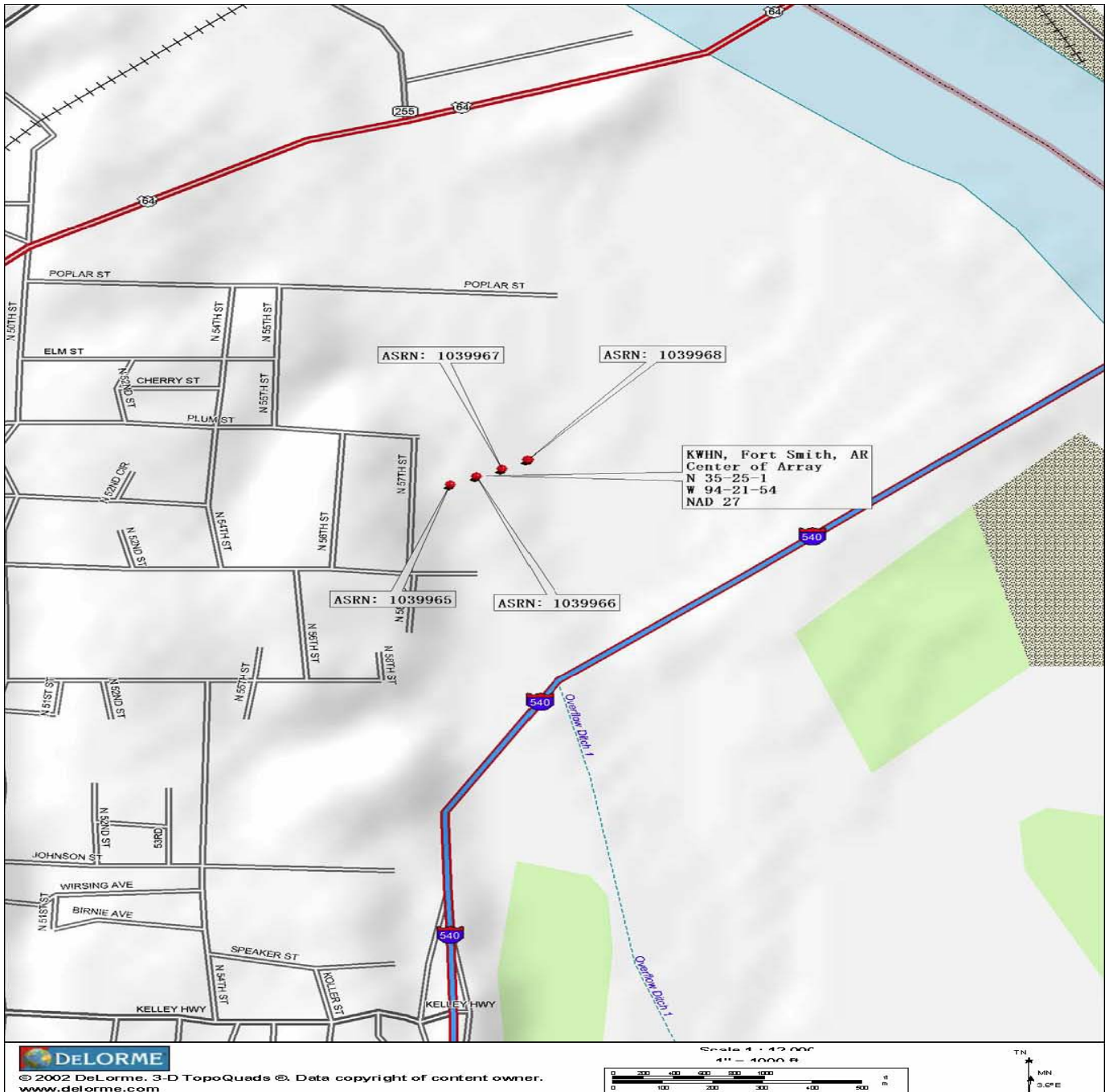


Figure 2
Center of Array
Satellite View
NAD83

