

Engineering Statement in support of
FCC FORM 349
APPLICATION FOR AUTHORITY TO
CONSTRUCT OR MAKE CHANGES
IN AN FM TRANSLATOR
OR FM BOSTER STATION
(For Minor Change in licensed facility)
K240BD 240FX, Facility ID 33804

Introduction:

This is an application by 1TV.com, Inc. (the Applicant) for a minor change in K240BD 240FX, Facility ID 33804.

The applicant seeks to increase the maximum ERP, change the antenna type/model and change the primary station. The primary station change will make this a FILL IN Translator.

The applicant proposes the following changes:

- Increase ERP from 0.010 kW to 0.060 kW.
- Change the antenna type and model to a Nicom LOGFMP5V.
- Change the Primary station to KHOT-FM 290C2, Facility ID 59422.
- Change the Translator status to Fill-in service.

The applicant has formal written permission from the owners of KHOT-FM to rebroadcast their signal.

The proposed changes are minor since there is no change in location. The ERP does not exceed the limits specified in 74.1235(a) for fill-in service since the max ERP is 60-Watts.

The proposed facility is within the protected contour of 2nd Adjacent authorization, KYOT-FM, 238C. The area of interference is on the south face of Mt. Oro. There is no population, occupied structures or roads in the area of interference, see Exhibit 12a.

This application was prepared using FCC 30-arc-second terrain data.

Joseph M. DiPietro, P.E.
RFEngineers, Inc.
July 31st 2009

Section III-A Engineering Data:

Tech Box Data:

1. Channel: 240
2. Primary Station: Facility ID 59422, Callsign KHOT-FM, Paradise Valley, Arizona Channel 290C2
3. Delivery Method: Off Air
4. Antenna Location Coordinates: 33° 54' 15" N (NAD-27)
111° 24' 34" W
5. Antenna Structure Registration Number: N/A
6. Antenna Location Site Elevation: 2164 meters AMSL
7. Overall Tower Height: 16 meters AGL
8. Height of Radiation Center: - meters (H) 12 meters (V) AGL
9. Effective Radiated Power: - kW (H) 0.060 kW (V)
10. Transmitting Antenna: Directional NIC LOGFMP5V, @210°
11. Booster or Fill-in within protected contour: Yes. See Exhibit 10.
12. Interference: No. Overlap with KYOT-FM. See Exhibit 12a.
 - a) Contour Overlap Requirements: Checked. See Exhibit 12b.
 - b) TV Channel 6 Protection: Not Checked.
13. Unattended Operation: Yes
14. Multiple Translators: Yes
15. NEPA, Yes.
 - a) Operation of this facility will not have a significant environmental impact. The proposed site is located within a remote, mountain-top communications facility. To the best knowledge of the Applicant:
 1. The existing structure is not located in an officially designated wilderness area or wildlife preserve, nor does it threaten the existence or habitat of endangered species.
 2. The proposed changes will not affect districts, sites, buildings, structures or objects significant in American history, architecture, engineering or culture that are listed in the National Register of Historic Places, or eligible for listing.
 3. The site is not located in a flood plain. Nothing is proposed that would require significant changes in surface features such as wetland fill, deforestation or water diversion.
 4. The existing structure does not require markings or lights in accordance with FAA requirements.
 - b) The Applicant will cooperate with all site users, managers and owners with regard to the cessation of operation or the reduction of operating power, whenever it is necessary to comply with the FCC Regulations and Guidelines on Human Exposure to Non-Ionizing RF Radiation.
 - c) The modeled contribution to the RF environment, 2-meters above the ground, by the proposed facility is 19.1uW/cm², or 9.5%, of the maximum permitted value for general public exposure (1.9% of the occupational exposure level). This result was obtained using the FCC's FM Model program. The antenna was set to a single bay dipole. Based on this information the proposed facility is in compliance with 47 C.R.R. Section 1.1306 with regards to radio-frequency electromagnetic exposure.

Exhibit 10

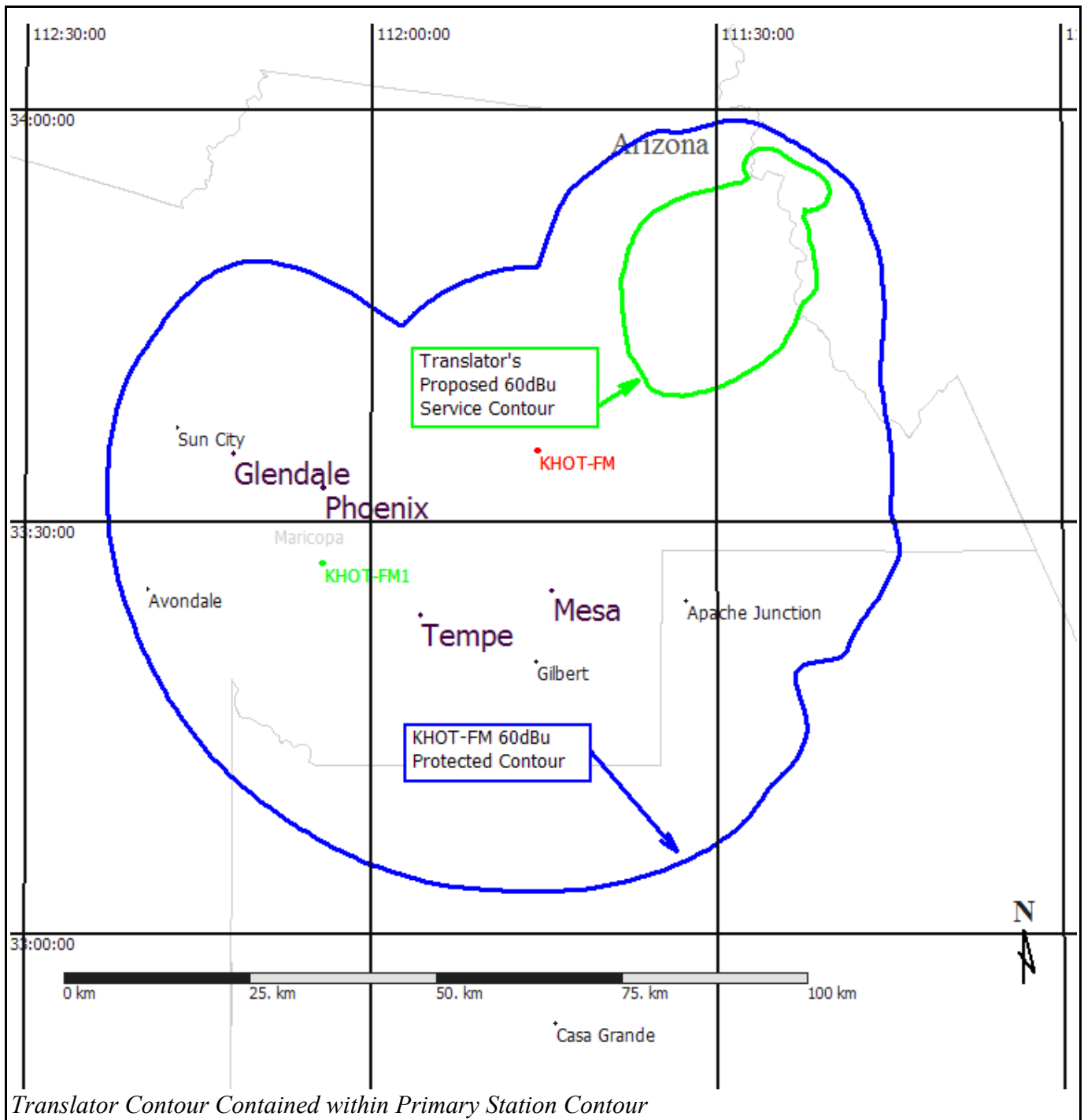
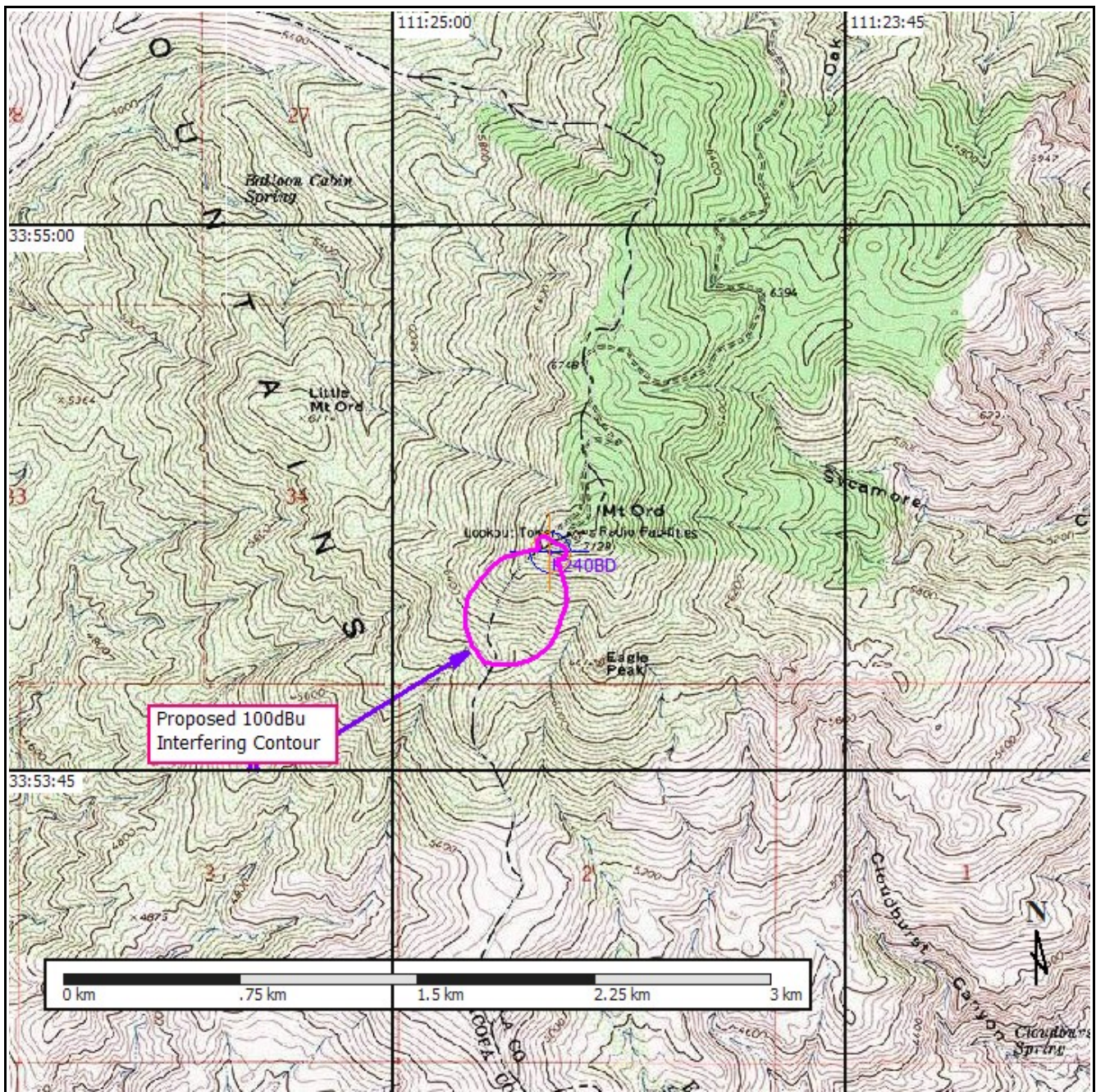
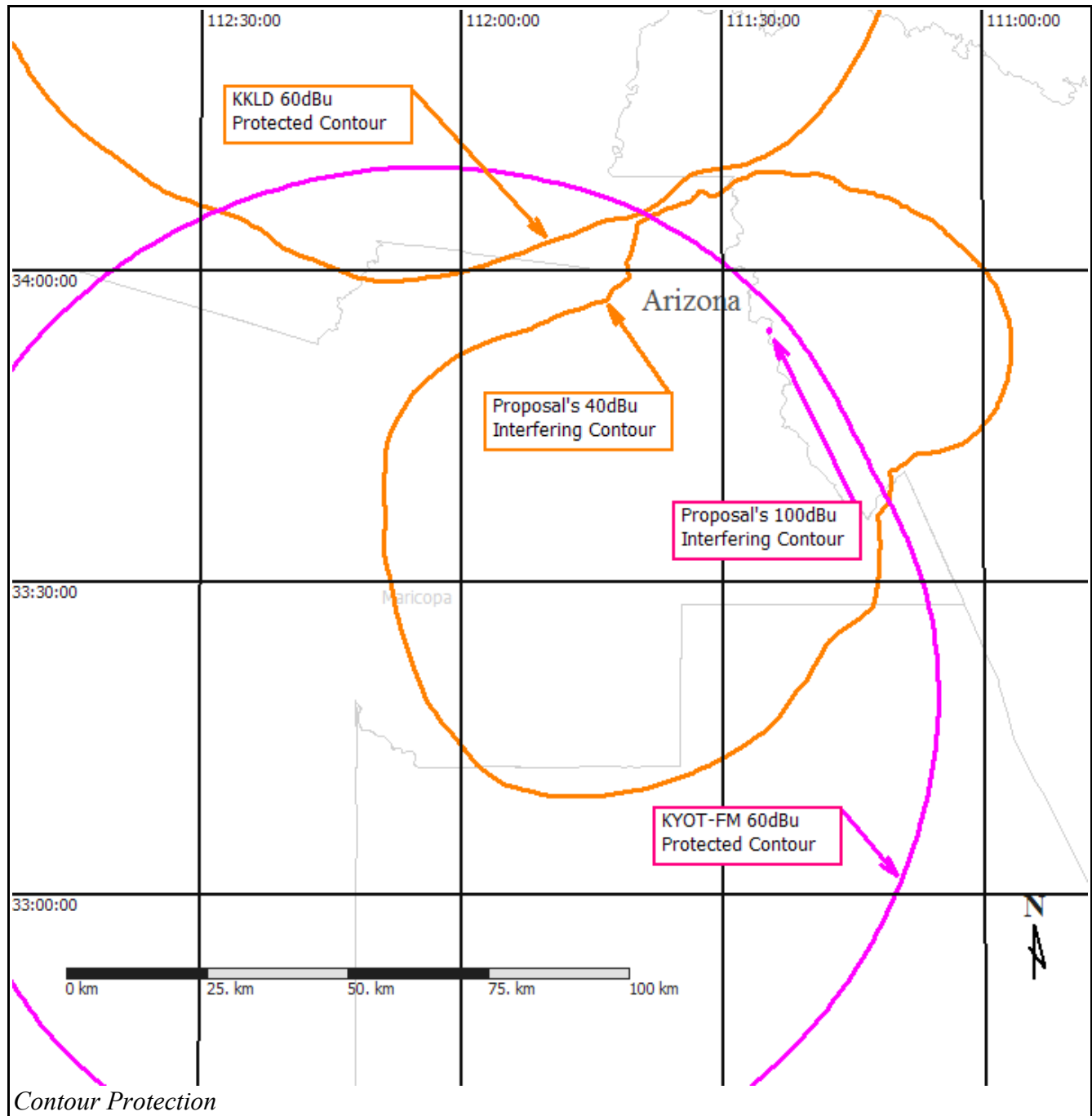


Exhibit 12a



No Occupied Structures or Roads within the 100 dBu Interfering Contour.

Exhibit 12b



Contours are color coded so that the overlap of LIKE COLORED lines indicates prohibited overlap.