

W214BG - Waycross, GA - Proposed

Latitude: 31-11-51.20 N - Longitude: 082-19-33.50 W
Channel: 214 - Frequency: 90.7 MHz
ERP: 0.038 kW - AMSL Height: 92.9 m

W214BG - Waycross, GA - BLFT20000706AGB

Latitude: 31-12-34 N - Longitude: 082-21-33 W
Channel: 214 - Frequency: 90.7 MHz
ERP: 0.055 kW - AMSL Height: 91.0 m

GRAHAM BROCK, INC.
BROADCAST TECHNICAL CONSULTANTS

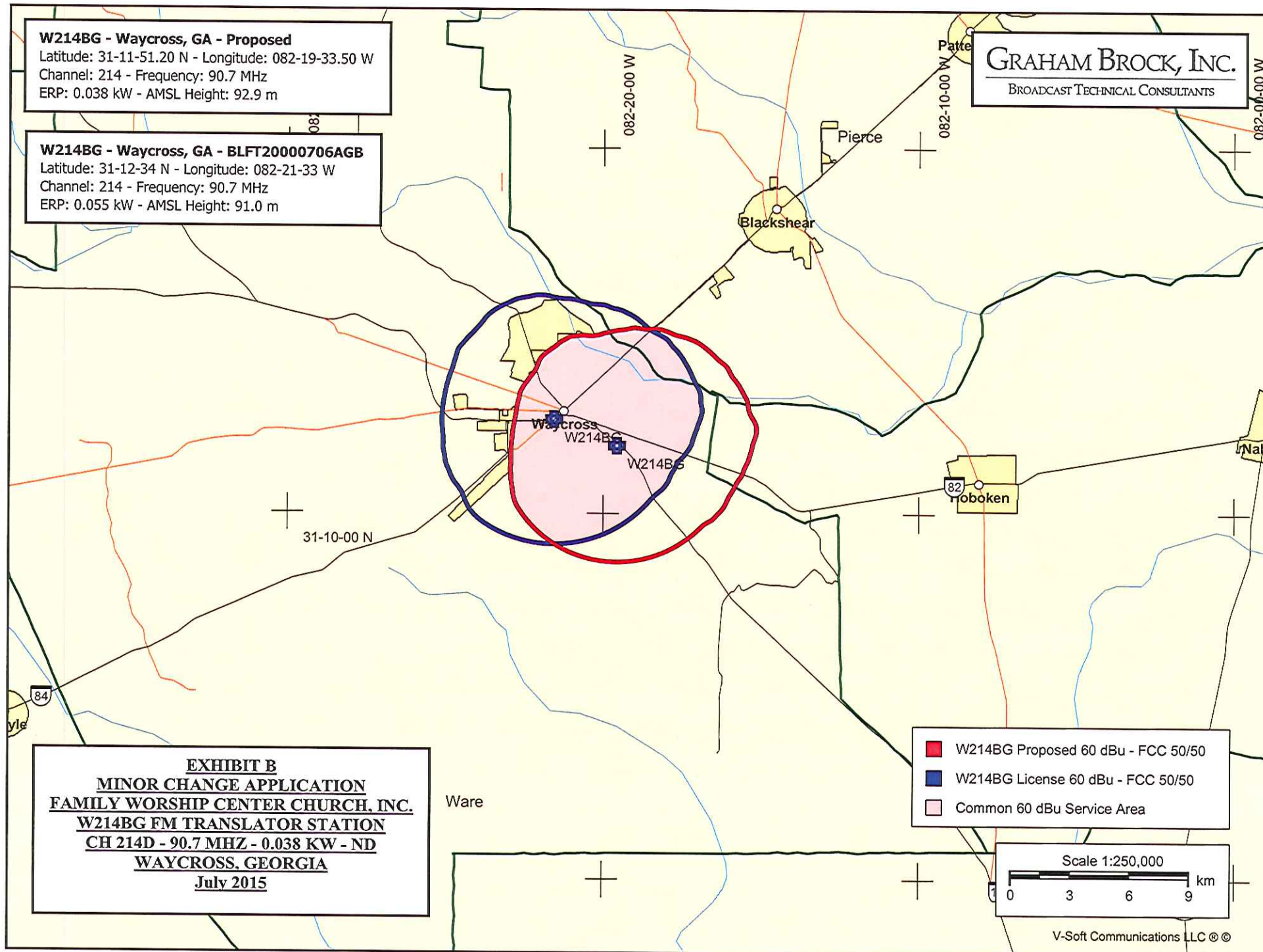


EXHIBIT B
MINOR CHANGE APPLICATION
FAMILY WORSHIP CENTER CHURCH, INC.
W214BG FM TRANSLATOR STATION
CH 214D - 90.7 MHZ - 0.038 KW - ND
WAYCROSS, GEORGIA
July 2015

- W214BG Proposed 60 dBu - FCC 50/50
- W214BG License 60 dBu - FCC 50/50
- Common 60 dBu Service Area