



.
Hi Dale -

We appreciate the approval of the STA for KPSV, I'm planning my trip to the site in the coming days.

I am a bit confused on the calculations we're using, and so wondering if you could revisit when you get a chance.

- The printouts below from VSoft program FM Commander indicated that a non-directional antenna at an 88.1 meters above sea level at 310 watts should have been contained within the 60 dBu contour of both the original authorization, and the pending modification.

Elevation comes up at 77.1 meters.

I'd like to understand where the discrepancy lies, and make the necessary corrections.

Thanks in advance -

- Clay Leander
(415) 307-9510

=====

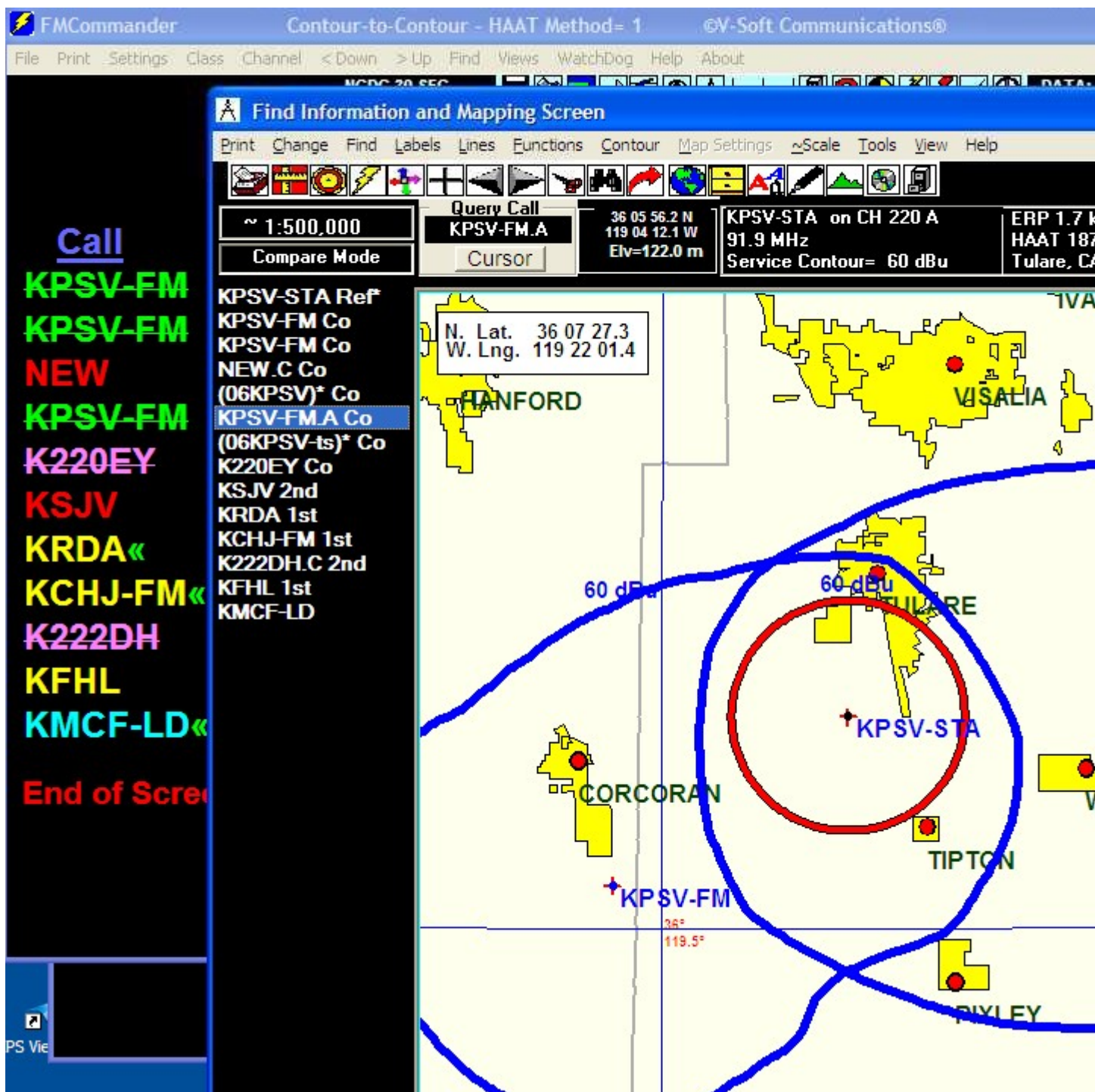
(Export via FM Commander (V-Soft))

FM Station Parameters

KPSV-STA APP 220 A Dom 0.310 kW 19 m HAAT M Non
Tracy CA 088.1 m COR AMSL -
Lat = 36 07 27.3, Lng = 119 22 01.4 - NAD 27 73.215 Station

Fac ID # 176022, FCC Sec. 73.212 Rounded ERP = 0.31 kW
Average Protected F(50-50)= 7.48 km

Data Date: 05-14-19, Job Date: 06-14-19



=====

June 17, 2019

Mr. Don Manro
South Valley Peace Center
17206 Avenue 296
Visalia, CA 93292

Re: KPSV-FM (FM), Tulare, CA
South Valley Peace Center
Facility Identification Number: 174791
Special Temporary Authority
BSTA-20190613AAR

Dear Licensee:

This is in reference to the request filed June 13, 2019, on behalf of South Valley Peace Center.

The STA request reports that the temporary operation sought, from a short, temporary structure "at

unpopulated portion of property [sic]", is needed "due to expiration of [a five year] sublease at [the] original location."

We find that at (the corrected value of) 0.310 kW ERP, the 60 dBu service contour of the STA operation would extend past the presently licensed 60 dBu service contour (license BLH-20130911AAB) toward the northeast. This fails our STA processing criterion that requires the STA service contour to remain within that of the licensed operation. 1As filed, this STA request is not grantable and is subject to dismissal.

However, we have determined that operation at 0.130 kW (130 watts) with the proposed STA facilities is acceptable in this instance. Therefore, Special Temporary Authority IS GRANTED for operation on Channel 220 with the effective radiated power limited to 0.130 kW (130 watts). KPSV-FM may not be operated with an ERP in excess of 0.130 kW (130 watts) under this STA