



EXHIBIT H

THIS EXHIBIT CONTAINS PLOTS OF THE MEASURED
FIELDS FOR KG6XDP WITH THE FOLLOWING DATA:

Radial °	Tx Co-Ordinates (NAD 27)		
True North	34°	41'	59" N.Lat.
At Lancaster	118	17	28 W.Long.

Radials:

0, 20, 40, 60, 260, 280, 300, 320, 340, Degrees.

Table of Conductivity Summary

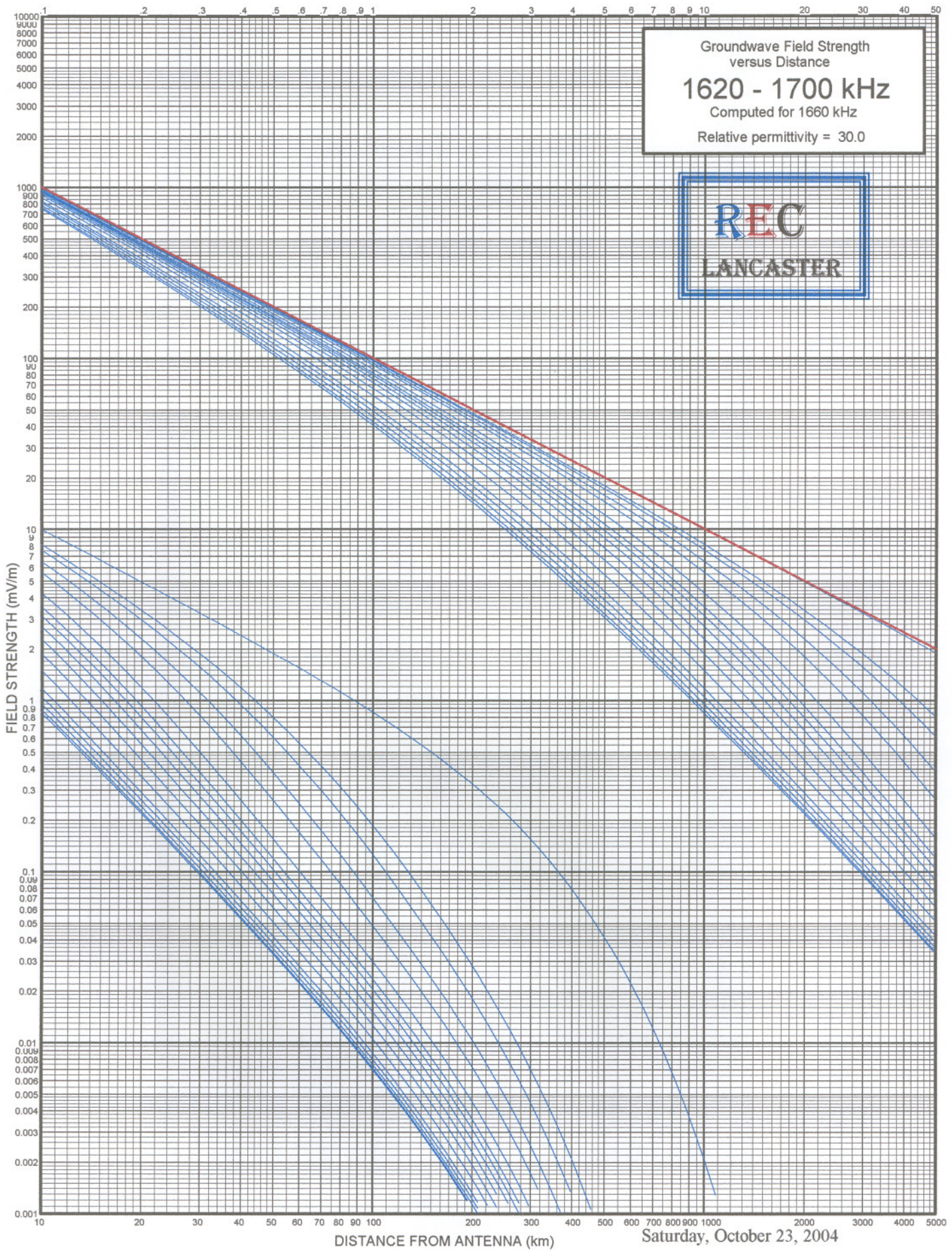
Each Radial Contains:

1. Plot with the Analysis of the Conductivity
2. Amdat File of Field Measurements
3. Table of Measurements, with Date & Time of Measurement
4. Weather Status at time of Measurement signed by the Field Engineer making the Measurements

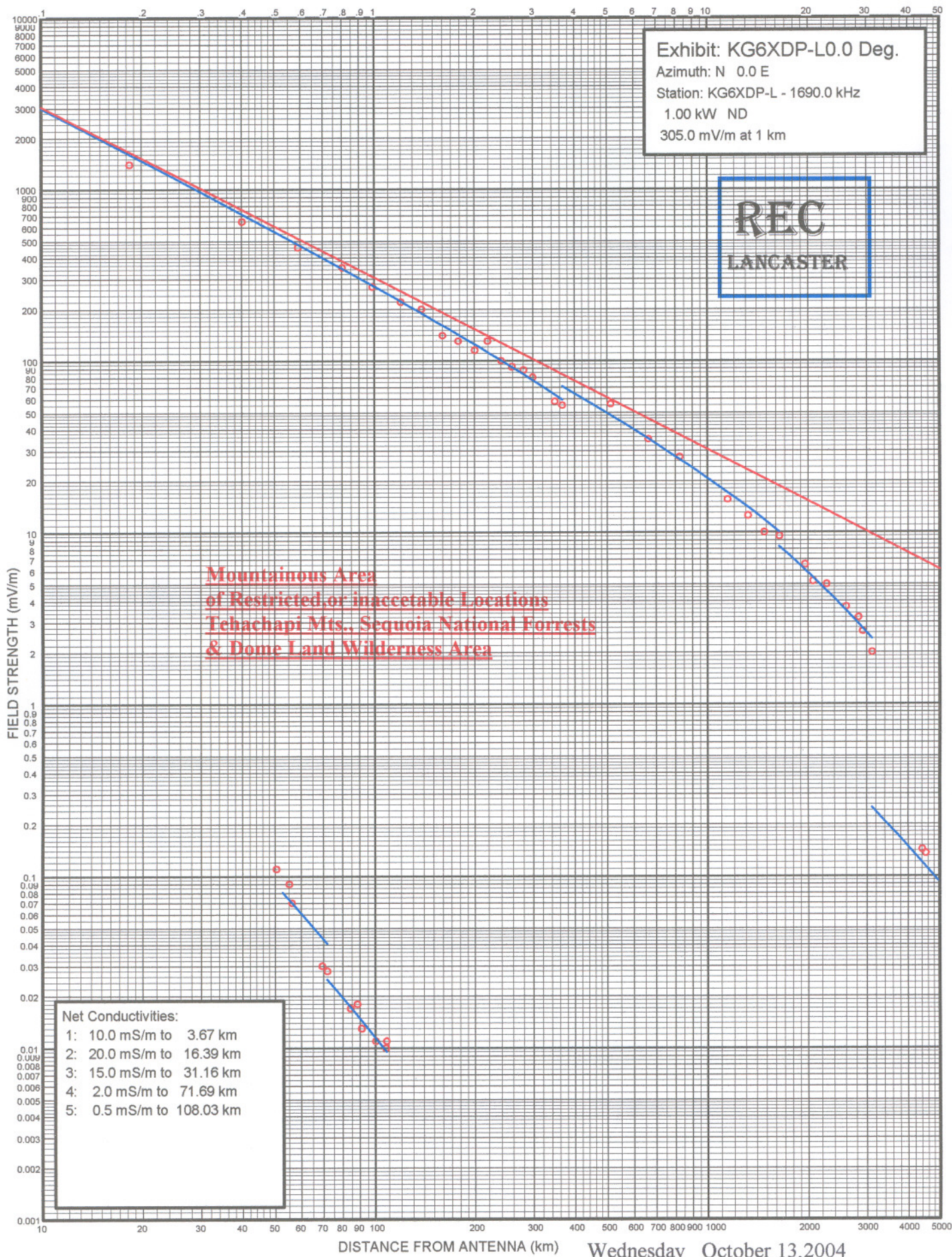
KG6XDP-Lancaster, California **Summary of Measured** **Conductivity and Distance**



Radial No.	Radial ° T	mS/m-km	mS/m-km	mS/m-km	mS/m-km	mS/m-km	
1	0	10.0-3.67	20-16.39	15-31.16	2-71.69	.5-108.03	END
2	20	20-20.4	15-30.9	8-60.0	7.0-80	5-127.1	END
3	40	10-3.2	20-30	10-65	7-95.4	END	
4	60	20-80.90	15-110	10-144.2	END		
5	260	8-9.08	1-89.03	0.5-99.28	END		
6	280	5-5.20	6-13.3	1-54.49	0.5-109.28	END	
7	300	7-15.0	4-31.0	2.-129.0	END		
8	320	6-1.90	10-21.8	1-76.0	2-144.6	END	
9	340	10-27.0	1.5-60.0	0.1-99.1	END		



Saturday, October 23, 2004



Wednesday October 13, 2004

KG6XDP-L

1690 0

45 1

ND ND1

0.184 1400

0.4004 650

0.59 460

0.8009 350

0.9858 270

1.201 220

1.386 200

1.602 140

1.786 130

2.002 115

2.187 130

2.403 100

2.588 92

2.803 88

2.988 80

3.481 58

3.666 55

5.12 56

6.64 35

8.24 27.5

11.47 15.5

13.2 12.5

14.77 10

16.39 9.5

19.6 6.5

20.71 5.2

22.74 5

26.05 3.7

28.38 3.2

29.21 2.65

31.16 2

44.1 0.142

45.21 0.135

50.46 0.11

55.16 0.09

56.16 0.07

69.25 0.03

71.69 0.028

84.1 0.017

88.29 0.018

90.9 0.013

100.2 0.011

107.5 0.01

107.6 0.01

108.03 0.011

EDX Amdat File KG6XDP Radial 0.0 °

FIELD STRENGTH MEASUREMENT DATA

Azimuth: N 0.0 E

Call: KG6XDP-Lancaster

Frequency: 1690.0 kHz

Power: 1.000 kW

Pattern: ND

2004				
Point Number	Date	Time	Distance (km)	Field Strength (mV/m)
1	9/28	1255	0.18	1400.00
2	9/28	1306	0.40	650.00
3	9/28	1317	0.59	460.00
4	9/28	1326	0.80	350.00
5	9/28	1336	0.99	270.00
6	9/28	1344	1.20	220.00
7	9/28	1350	1.39	200.00
8	9/28	1420	1.60	140.00
9	9/28	1427	1.79	130.00
10	9/28	1435	2.00	115.00
11	9/28	1445	2.19	130.00
12	9/28	1450	2.40	100.00
13	9/28	1505	2.59	92.00
14	9/28	1510	2.80	88.00
15	9/28	1515	2.99	80.00
16	9/28	1530	3.48	58.00
17	9/28	1545	3.67	55.00
18	9/16	1110	5.12	56.00
19	9/16	1121	6.64	35.00
20	9/16	1131	8.24	27.50
21	9/16	1140	11.47	15.50
22	9/16	1148	13.20	12.50
23	9/16	1155	14.77	10.00
24	9/16	1203	16.39	9.50
25	9/16	1210	19.60	6.50
26	9/16	1227	20.71	5.20
27	9/16	1238	22.74	5.00
28	9/16	1255	26.05	3.70
29	9/16	1310	28.38	3.20
30	9/16	1320	29.21	2.65
31	9/16	1340	31.16	2.00
32	9/16	1443	45.21	0.135
33	9/16	1515	50.46	0.220
34	9/16	1530	55.16	0.220
35	9/16	1555	56.19	0.240
36	9/17	0900	69.25	0.030
37	9/17	0930	71.69	0.065
38	9/17	1102	84.10	0.060
39	9/17	1046	84.39	0.052
40	9/17	1340	88.29	0.040
41	9/17	1310	90.90	0.038
42	9/17	1500	100.20	0.011
43	9/17	1450	107.50	0.010
44	9/17	1437	107.60	0.010
45	9/17	1445	108.03	0.011

Wednesday, October 13, 2004

FIELD SURVEY PLAN
Radio & Tv Engineering Co.

DAILY MEASUREMENT REPORT

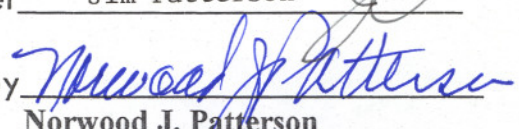
Station KG6XPD-Lancaster
Frequency 1690 kHz
FCC ID # 54760
Radial No. 1
Az 0 °T
TX Location 9042 W. Jackman, Lancaster, CA
TX Site Co-ordinates:
34° 41' 59" N. Lat. NAD 27
118° 17' 28" W. Long.

Measured: DAY Thursday
DATE 9/16/04

Weather: Clear x Cloudy____ Overcast____ Rain____

FIM Model No. 41 s/n 882
SONY GPS s/n____
GEO Exp. 3 s/n____
BOB Receiver s/n____
MAGELLAN used 330

Field Engineer Jim Patterson 

Supervised by 
Norwood J. Patterson
REC Engineer

FIELD SURVEY PLAN
Radio & Tv Engineering Co.

DAILY MEASUREMENT REPORT

Station KG6XPD-Lancaster
Frequency 1690 kHz
FCC ID # 54760
Radial No. 1
Az 0 °T
TX Location 9042 W. Jackman, Lancaster, CA
TX Site Co-ordinates:
34° 41' 59" N. Lat. NAD 27
118° 17' 28" W. Long.

Measured: DAY FRIDAY
DATE 9/17/04

Weather: Clear X Cloudy ___ Overcast ___ Rain ___

FIM Model No. 41 s/n 882
SONY GPS s/n ___
GEO Exp. 3 s/n ___
BOB Receiver s/n ___
MAGELLAN used 230

Field Engineer

JIM PATTERSON

Supervised by

Norwood J. Patterson
Norwood J. Patterson
REC Engineer

FIELD SURVEY PLAN
Radio & Tv Engineering Co.

DAILY MEASUREMENT REPORT

Station KG6XPD-Lancaster
Frequency 1690 kHz
FCC ID # 54760
Radial No. 1
Az 0 °T
TX Location 9042 W. Jackman, Lancaster, CA
TX Site Co-ordinates:
34° 41' 59" N. Lat. NAD 27
118° 17' 28" W. Long.

Measured: DAY TUESDAY
DATE 9/28/04

Weather: Clear X Cloudy____ Overcast____ Rain____

FIM Model No. 41 s/n 882
SONY GPS s/n____
GEO Exp. 3 s/n____
BOB Receiver s/n____
MAGELLAN used 330

Field Engineer Jim PATTERSON

Supervised by Norwood J. Patterson
Norwood J. Patterson
REC Engineer